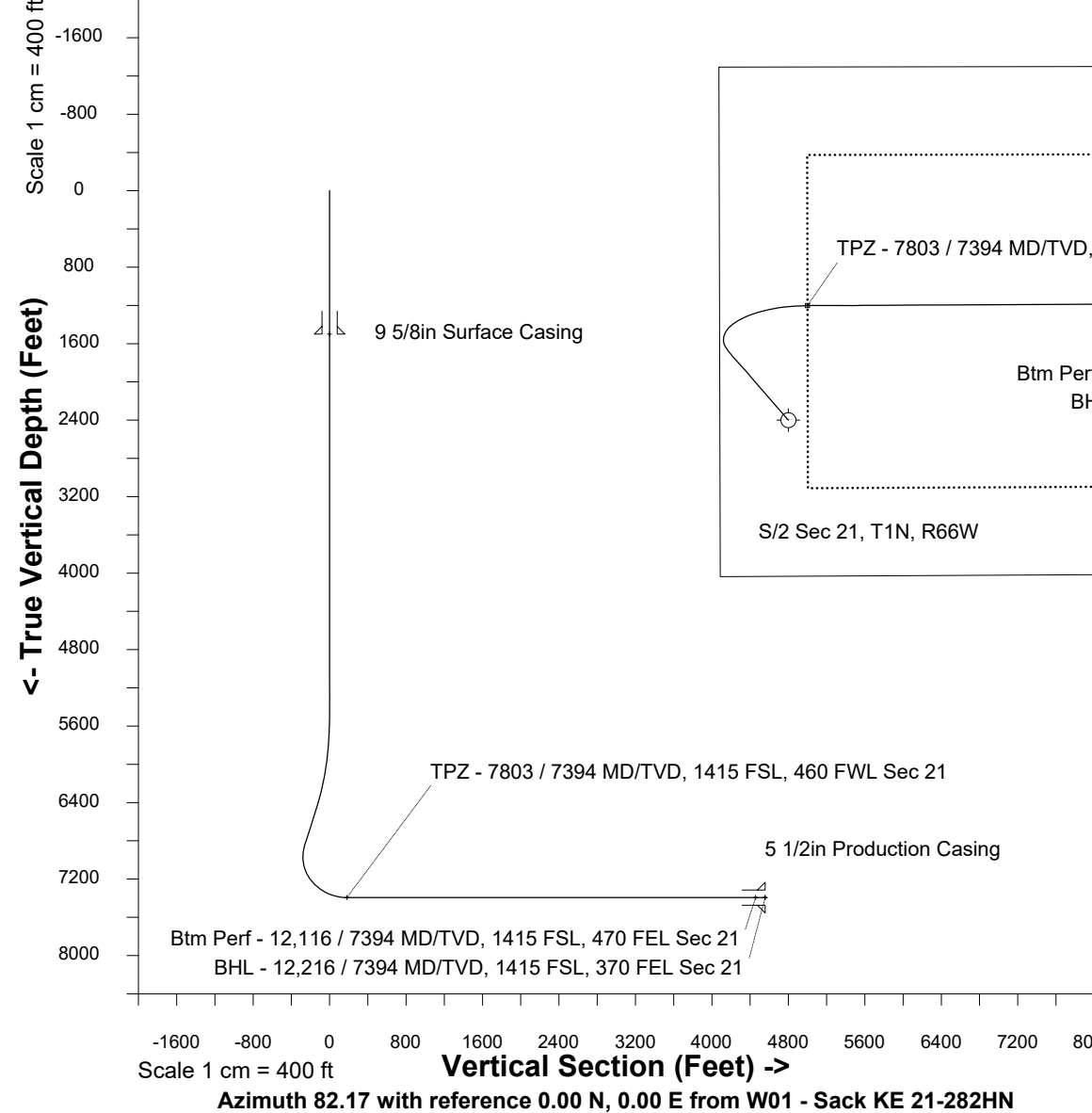


May-21-2018
EMM-2015 [2000.0-2020.0] Dip: 66.41 deg Field: 52108.5 nT
Lat: N40 1 54.0372 Long: W104 47 24.6996 Elev: 5020.90 ft
Magnetic North is 8.16 deg East of TRUE North
To correct azimuth from Magnetic to TRUE add 8.16 deg



Great Western Operating Company, LLC			
Location	Colorado	Slot	W01 - Sack KE 21-282HN
Field	Wattenburg	Well	Sack KE 21-282HN
Installation	Sack	Wellbore	Sack KE 21-282HN (PWB)

Created by	admin
Date plotted	21-May-2018
Plot reference is Sack KE 21-282HN (PWB).	
Ref wellpath is Sack KE 21-282HN (PWP#1).	
Coordinates are in Feet reference W01 - Sack KE 21-282HN.	
True Vertical Depths are reference Rig Datum.	
Measured Depths are reference Rig Datum.	
Rig Datum: Planned Datum #1	
Rig Datum to Mean Sea Level: 5040.90 ft.	
Plot North is aligned to TRUE North.	

WELL PROFILE DATA								
Point	MD	Inc	Azi	TVD	North	East	deg/100ft	V. Sect
Tie on	0.00	0.00	0.00	0.00	S 0.00	W 0.00		0.00
KOP	5514.20	0.00	318.97	5514.20	S 0.00	W 0.00	0.00	0.00
End of Build	6514.07	30.00	318.97	6469.02	N 192.98	W 167.91	3.00	-140.05
End of Hold	6963.73	30.00	318.97	6858.45	N 362.58	W 315.47	0.00	-263.13
Target TPZ - ...Sec 21	7802.52	90.00	89.71	7394.00	N 598.89	E 99.97	13.00	180.64
Target Btm Pe...Sec 21	12116.39	90.00	89.71	7394.00	N 620.41	E 4413.79	0.00	4457.16
End of Turn	12116.90	90.00	89.78	7394.00	N 620.41	E 4414.30	13.00	4457.67
T.D. & Target BHL... 21	12216.36	90.00	89.78	7394.00	N 620.79	E 4513.76	0.00	4556.25