

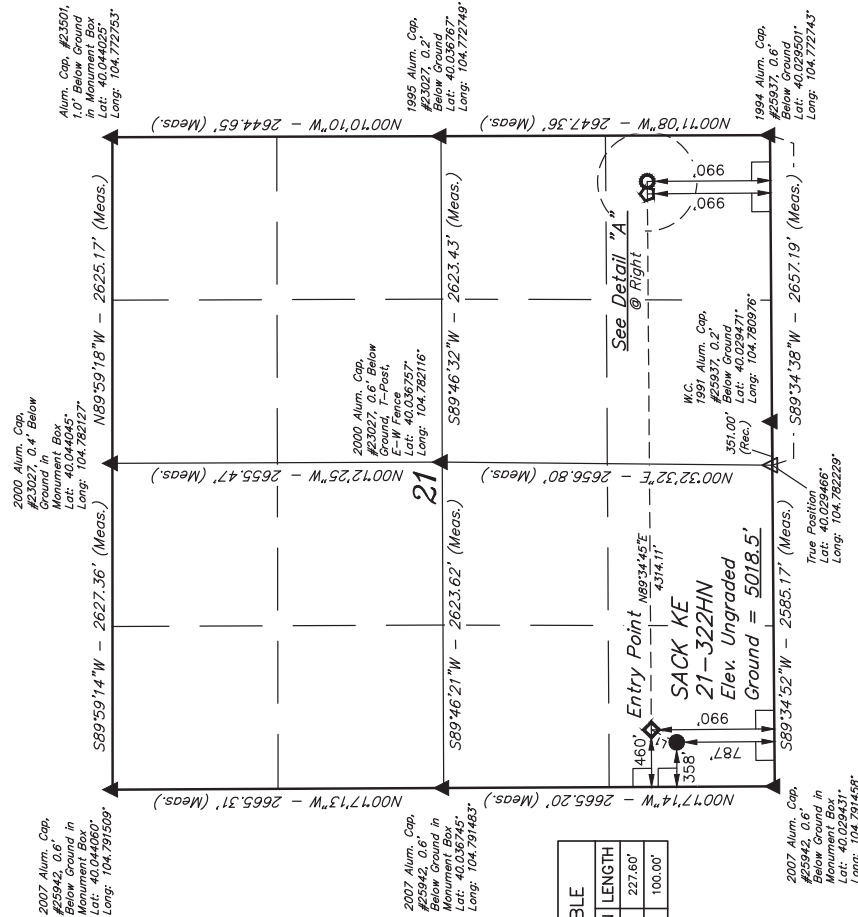
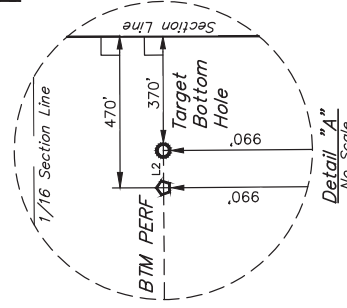
GREAT WESTERN OPERATING COMPANY

SACK KE 21-32HN
SW 1/4 SW 1/4, SECTION 21, T1N, R66W, 6th P.M.
WELD COUNTY, COLORADO

BASIS OF BEARINGS
TRANSVERSE MERCATOR PROJECTION WITH
A CENTRAL MERIDIAN OF W105°00'00".

BASIS OF ELEVATION
OPUS SOLUTION GENERATED NAVD 88

Z-



LINE TABLE		
LINE	DIRECTION	LENGTH
L1	N26°12'20"E	227.60'
L2	N89°34'38"E	100.00'

THIS IS TO CERTIFY THAT THE ABOVE
NOTES OF ACTUAL SURVEYS MADE
AND THAT THE SAME ARE TRUE AND
KNOWLEDGE AND BELIEF.

REV: 05-21-18 K.B. (LATITUDE CORRECTION)

PDOP = 1.5



JINTAN
ENGINEERING & LAND SURVEYING

UELS, LLC

Corporate Office * 85 South 200 East
Vernal, UT 84078 * (435) 789-1017

SURVEYED BY	JAMES FRESHWATER, N.W.	04-18-18	SCALE
DRAWN BY	K.B.	04-30-18	1" = 1000'

WELL LOCATION PLAT