

T1N, R66W, 6th P.M.

GREAT WESTERN OPERATING COMPANY

SACK KE 21-242HC  
SW 1/4 SW 1/4, SECTION 21, T1N, R66W, 6th P.M.  
WELD COUNTY, COLORADO

BASIS OF BEARINGS  
TRANSVERSE MERCATOR PROJECTION WITH  
A CENTRAL MERIDIAN OF W 105°00'00".

BASIS OF ELEVATION  
OPUS SOLUTION GENERATED NAVD 88

LEGEND:

- 90° SYMBOL
- PROPOSED WELLHEAD.
- ENTRY POINT.
- BTM PERF.
- TARGET BOTTOM HOLE.
- SECTION CORNERS LOCATED (NAD 83)
- SECTION CORNERS RE-ESTABLISHED. (Not Set on Ground.) (NAD 83)

2007 Alum. Cap.  
#25942, 0.6' Below Ground In Monument Box  
Lat: 40.029431°  
Long: 104.791458°

2000 Alum. Cap.  
#23027, 0.4' Below Ground In Monument Box  
Lat: 40.040405°  
Long: 104.782127°

2007 Alum. Cap.  
#25942, 0.6' Below Ground In Monument Box  
Lat: 40.029431°  
Long: 104.791458°

2000 Alum. Cap.  
#23027, 0.6' Below Ground, 1-Post.  
Lat: 40.036757°  
Long: 104.782116°

1995 Alum. Cap.  
#23027, 0.2' Below Ground  
Lat: 40.036757°  
Long: 104.722749°

1994 Alum. Cap.  
#25937, 0.6' Below Ground  
Lat: 40.029466°  
Long: 104.722743°

2007 Alum. Cap.  
#25942, 0.6' Below Ground In Monument Box  
Lat: 40.029431°  
Long: 104.791458°

2000 Alum. Cap.  
#23027, 0.2' Below Ground  
Lat: 40.029471°  
Long: 104.780976°

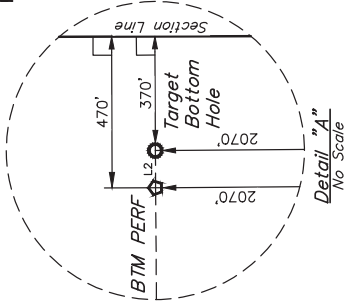
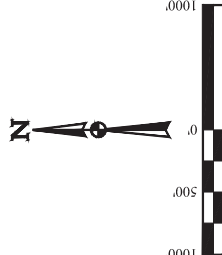
2007 Alum. Cap.  
#25942, 0.6' Below Ground In Monument Box  
Lat: 40.029431°  
Long: 104.791458°

2007 Alum. Cap.  
#25942, 0.6' Below Ground In Monument Box  
Lat: 40.029431°  
Long: 104.791458°

2007 Alum. Cap.  
#25942, 0.6' Below Ground In Monument Box  
Lat: 40.029431°  
Long: 104.791458°

2007 Alum. Cap.  
#25942, 0.6' Below Ground In Monument Box  
Lat: 40.029431°  
Long: 104.791458°

2007 Alum. Cap.  
#25942, 0.6' Below Ground In Monument Box  
Lat: 40.029431°  
Long: 104.791458°



LINE TABLE		
LINE	DIRECTION	LENGTH
L1	N04°10'49"E	1302.64'
L2	N89°34'38"E	100.00'



CERTIFICATE OF SURVEY  
THIS IS TO CERTIFY THAT THE ABOVE DESCRIBED SURVEY WAS MADE BY ME OR UNDER MY SUPERVISION AND THAT THE SAME ARE TRUE AND CORRECT TO THE BEST OF MY KNOWLEDGE AND BELIEF.

REV: 1 05-21-18 K.B. (LATITUDE CORRECTION)

PDOP = 1.5



UELS, LLC  
Corporate Office \* 85 South 200 East  
Vernal, UT 84078 \* (435) 789-1017

SURVEYED BY		SCALE	
JAMES FRESHWATER, N.W.		1" = 1000'	
DRAWN BY		SCALE	
K.B.		1" = 1000'	

WELL LOCATION PLAT

NAD 83 (SURFACE LOCATION)	NAD 83 (ENTRY POINT)	NAD 83 (BTM PERF)	NAD 83 (TARGET BOTTOM HOLE)
LATITUDE = 40°01'53.59" (40.031553°) LONGITUDE = 104°47'24.67" (104.790185°)	LATITUDE = 40°02'06.43" (40.035178°) LONGITUDE = 104°47'23.41" (104.789835°)	LATITUDE = 40°02'06.63" (40.035178°) LONGITUDE = 104°46'27.93" (104.77426°)	LATITUDE = 40°02'06.64" (40.035178°) LONGITUDE = 104°46'26.63" (104.77469°)
NAD 27 (SURFACE LOCATION)	NAD 27 (ENTRY POINT)	NAD 27 (BTM PERF)	NAD 27 (TARGET BOTTOM HOLE)
LATITUDE = 40°01'53.65" (40.031570°) LONGITUDE = 104°47'22.77" (104.789659°)	LATITUDE = 40°02'06.49" (40.035135°) LONGITUDE = 104°47'21.51" (104.789899°)	LATITUDE = 40°02'06.69" (40.035193°) LONGITUDE = 104°46'26.04" (104.773900°)	LATITUDE = 40°02'06.70" (40.035194°) LONGITUDE = 104°46'24.73" (104.77343°)