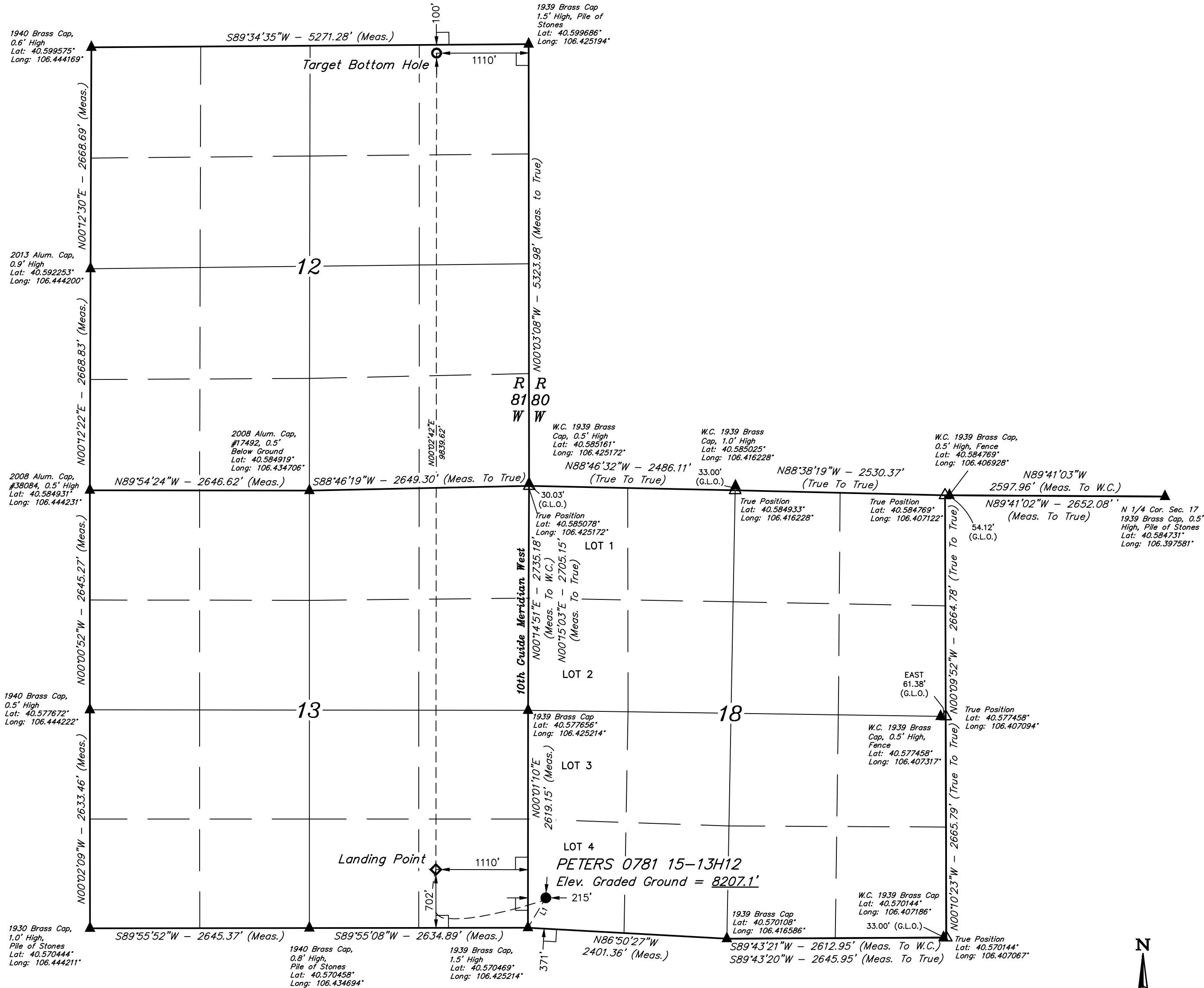


T7N, R80W, 6th P.M.

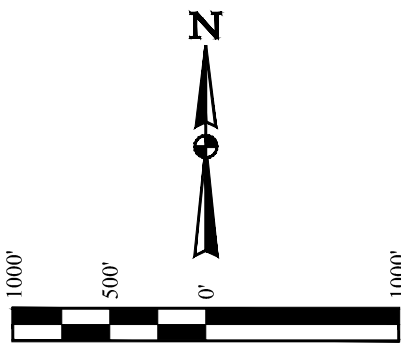
SandRidge Exploration & Production, LLC

PETERS 0781 15-13H12
LOT 4, SECTION 18, T7N, R80W, 6th P.M.
JACKSON COUNTY, COLORADO

BASIS OF BEARINGS
BASIS OF ELEVATION
SPOT ELEVATION AT THE SOUTHEAST CORNER OF SECTION 29,
T7N, R80W, 6th P.M., TAKEN FROM THE COALMONT QUADRANGLE,
COLORADO, JACKSON COUNTY 7.5 MINUTE QUAD.
(TOPOGRAPHIC MAP) PUBLISHED BY THE UNITED STATES
DEPARTMENT OF THE INTERIOR, GEOLOGICAL SURVEY. SAID
ELEVATION IS MARKED AS BEING 8156 FEET



LINE TABLE		
LINE	DIRECTION	LENGTH
L1	N30°51'57"E	419.32'



LEGEND:
= 90° SYMBOL
= PROPOSED WELLHEAD.
= LANDING POINT
= TARGET BOTTOM HOLE.
= SECTION CORNERS LOCATED. (NAD 83)
= SECTION CORNERS RE-ESTABLISHED.
(Not Set on Ground.) (NAD 83)

NAD 83 (SURFACE LOCATION)	NAD 83 (LANDING POINT)	NAD 83 (TARGET BOTTOM HOLE)
LATITUDE = 40°34'17.25" (40.571458)	LATITUDE = 40°34'20.61" (40.572392)	LATITUDE = 40°33'57.80" (40.569889)
LONGITUDE = 106°25'27.98" (106.424439)	LONGITUDE = 106°25'45.15" (106.429208)	LONGITUDE = 106°25'45.09" (106.429192)
NAD 27 (SURFACE LOCATION)	NAD 27 (LANDING POINT)	NAD 27 (TARGET BOTTOM HOLE)
LATITUDE = 40°34'17.32" (40.571478)	LATITUDE = 40°34'20.68" (40.572411)	LATITUDE = 40°33'57.88" (40.569911)
LONGITUDE = 106°25'25.87" (106.423853)	LONGITUDE = 106°25'43.03" (106.428619)	LONGITUDE = 106°25'42.97" (106.428603)
STATE PLANE NAD 83 (CO. NORTH)	STATE PLANE NAD 83 (CO. NORTH)	STATE PLANE NAD 83 (CO. NORTH)
N: 1452361.83 E: 2743189.79	N: 1452715.64 E: 2741868.99	N: 1462550.59 E: 2741976.75
STATE PLANE NAD 27 (CO. NORTH)	STATE PLANE NAD 27 (CO. NORTH)	STATE PLANE NAD 27 (CO. NORTH)
N: 4522359.66 E: 1743346.13	N: 452713.46 E: 1742025.33	N: 462548.46 E: 1742133.01

PDOP = 1.2

REV: 6 05-24-18 C.D.L. (LP CHANGE)



UELS, LLC
Corporate Office * 85 South 200 East
Vernal, UT 84078 * (435) 789-1017

SURVEYED BY GREG WEIMER 09-26-17 SCALE
DRAWN BY M.D. 10-02-17 1" = 1000'

WELL LOCATION PLAT

CERTIFICATE OF REGISTRATION
THIS IS TO CERTIFY THAT THE ABOVE SURVEY WAS PREPARED BY ME, AND THAT THE SAME ARE TRUE AND CORRECT TO THE BEST OF MY KNOWLEDGE AND BELIEF.
REGISTERED LAND SURVEYOR
RECEIVED JAN. NO. 28285
STATE OF COLORADO
JAN 18 2018