

# **Crestone Peak Resources**

**DJ BASIN**

**S21-T2N-R68W**

**DREAM WEAVER South 3E-21H-N268**

**OH**

**PLAN #1**

## **Anticollision Summary Report**

**17 April, 2018**

# Cathedral Energy Services

## Anticollision Summary Report

|                           |                                |                                     |   |
|---------------------------|--------------------------------|-------------------------------------|---|
| <b>Company:</b>           | Crestone Peak Resources        | <b>Local Co-ordinate Reference:</b> | Well DREAM WEAVER South 3E-21H-N268 - Slot DREAM WEAVER South 3E-21H-N268 SHL |
| <b>Project:</b>           | DJ BASIN                       | <b>TVD Reference:</b>               | 23' KB @ 4924.00usft (Original Well Elev)                                     |
| <b>Reference Site:</b>    | S21-T2N-R68W                   | <b>MD Reference:</b>                | 23' KB @ 4924.00usft (Original Well Elev)                                     |
| <b>Site Error:</b>        | 0.00 usft                      | <b>North Reference:</b>             | True  |
| <b>Reference Well:</b>    | DREAM WEAVER South 3E-21H-N268 | <b>Survey Calculation Method:</b>   | Minimum Curvature   |
| <b>Well Error:</b>        | 0.00 usft                      | <b>Output errors are at</b>         | 2.00 sigma  |
| <b>Reference Wellbore</b> | OH                             | <b>Database:</b>                    | USA EDM 5000 Multi Users DB   |
| <b>Reference Design:</b>  | PLAN #1                        | <b>Offset TVD Reference:</b>        | Offset Datum  |

|                                     |   |                       |                     |
|-------------------------------------|---|-----------------------|---------------------|
| <b>Reference</b>                    | PLAN #1   |                       |                     |
| <b>Filter type:</b>                 | NO GLOBAL FILTER: Using user defined selection & filtering criteria |                       |                     |
| <b>Interpolation Method:</b>        | MD Interval 100.00usft  | <b>Error Model:</b>   | ISCWSA              |
| <b>Depth Range:</b>                 | Unlimited   | <b>Scan Method:</b>   | Closest Approach 3D |
| <b>Results Limited by:</b>          | Maximum center-center distance of 2,237.05 usft                     | <b>Error Surface:</b> | Pedal Curve         |
| <b>Warning Levels Evaluated at:</b> | 2.00 Sigma  | <b>Casing Method:</b> | Not applied         |

|                            |                  |                          |                  |                     |
|----------------------------|------------------|--------------------------|------------------|---------------------|
| <b>Survey Tool Program</b> | <b>Date</b>      | 3/22/2018                |                  |                     |
| <b>From (usft)</b>         | <b>To (usft)</b> | <b>Survey (Wellbore)</b> | <b>Tool Name</b> | <b>Description</b>  |
| 0.00                       | 2,000.00         | PLAN #1 (OH)             | VESSI_GYROFLEX   | VESSI Gyroflex Gyro |
| 2,001.00                   | 19,013.28        | PLAN #1 (OH)             | MWD+HDGM         | OWSG MWD + HDGM     |

| Summary                                       |                                 |                              |                                 |                                  |                   |                     |
|---|---------------------------------|------------------------------|---------------------------------|----------------------------------|-------------------|---------------------|
| Site Name                                     | Reference Measured Depth (usft) | Offset Measured Depth (usft) | Distance Between Centres (usft) | Distance Between Ellipses (usft) | Separation Factor | Warning             |
| S21-T2N-R68W                                  |                                 |                              |                                 |                                  |                   |                     |
| DREAM WEAVER North 3A-21H-N268 - OH - PLAN #1 | 200.00                          | 200.00                       | 182.14                          | 181.65                           | 371.474           | CC, ES              |
| DREAM WEAVER North 3A-21H-N268 - OH - PLAN #1 | 8,800.00                        | 7,193.32                     | 1,144.22                        | 1,089.31                         | 20.837            | SF                  |
| DREAM WEAVER North 3B-21H-N268 - OH - PLAN #1 | 301.91                          | 301.91                       | 170.00                          | 169.15                           | 199.742           | CC                  |
| DREAM WEAVER North 3B-21H-N268 - OH - PLAN #1 | 500.00                          | 499.64                       | 170.17                          | 168.62                           | 110.031           | ES                  |
| DREAM WEAVER North 3B-21H-N268 - OH - PLAN #1 | 8,700.00                        | 7,259.14                     | 901.03                          | 848.04                           | 17.003            | SF                  |
| DREAM WEAVER North 3C-21H-N268 - OH - PLAN #1 | 1,034.50                        | 1,022.69                     | 148.84                          | 145.42                           | 43.483            | CC, ES              |
| DREAM WEAVER North 3C-21H-N268 - OH - PLAN #1 | 8,500.00                        | 7,245.77                     | 712.14                          | 663.51                           | 14.645            | SF                  |
| DREAM WEAVER North 3D-21H-N268 - OH - PLAN #1 | 1,176.12                        | 1,165.25                     | 119.32                          | 115.41                           | 30.488            | CC, ES              |
| DREAM WEAVER North 3D-21H-N268 - OH - PLAN #1 | 8,400.00                        | 7,350.97                     | 492.74                          | 444.99                           | 10.318            | SF                  |
| DREAM WEAVER North 3E-21H-N268 - OH - PLAN #1 | 1,236.75                        | 1,227.68                     | 93.10                           | 88.98                            | 22.583            | CC, ES              |
| DREAM WEAVER North 3E-21H-N268 - OH - PLAN #1 | 8,022.14                        | 7,586.82                     | 172.68                          | 128.65                           | 3.922             | SF                  |
| DREAM WEAVER North 3F-21H-N268 - OH - PLAN #1 | 8,331.96                        | 7,431.43                     | 52.48                           | 5.87                             | 1.126             | Level 2, CC, ES, SF |
| DREAM WEAVER North 3G-21H-N268 - OH - PLAN #1 | 1,300.00                        | 1,306.38                     | 47.62                           | 43.26                            | 10.923            | CC, ES              |
| DREAM WEAVER North 3G-21H-N268 - OH - PLAN #1 | 8,106.99                        | 7,549.56                     | 260.02                          | 215.60                           | 5.854             | SF                  |
| DREAM WEAVER North 3H-21H-N268 - OH - PLAN #1 | 1,300.00                        | 1,294.65                     | 30.14                           | 25.80                            | 6.949             | CC, ES, SF          |
| DREAM WEAVER North 3I-21H-N268 - OH - PLAN #1 | 927.69                          | 931.26                       | 15.58                           | 12.52                            | 5.090             | CC, ES, SF          |
| DREAM WEAVER North 3J-21H-N268 - OH - PLAN #1 | 872.40                          | 876.18                       | 11.40                           | 8.53                             | 3.977             | CC, ES, SF          |
| DREAM WEAVER North 3K-21H-N268 - OH - PLAN #1 | 783.20                          | 787.64                       | 19.96                           | 17.40                            | 7.791             | CC, ES              |
| DREAM WEAVER North 3K-21H-N268 - OH - PLAN #1 | 800.00                          | 804.13                       | 20.24                           | 17.62                            | 7.715             | SF                  |
| DREAM WEAVER South 3A-21H-N268 - OH - PLAN #1 | 103.39                          | 103.39                       | 48.57                           | 48.42                            | 327.480           | CC, ES              |
| DREAM WEAVER South 3A-21H-N268 - OH - PLAN #1 | 19,013.28                       | 19,287.83                    | 984.32                          | 614.05                           | 2.658             | SF                  |
| DREAM WEAVER South 3B-21H-N268 - OH - PLAN #1 | 103.42                          | 103.42                       | 36.43                           | 36.28                            | 245.485           | CC, ES              |
| DREAM WEAVER South 3B-21H-N268 - OH - PLAN #1 | 19,013.28                       | 19,365.82                    | 605.64                          | 255.16                           | 1.728             | SF                  |
| DREAM WEAVER South 3C-21H-N268 - OH - PLAN #1 | 103.61                          | 103.61                       | 24.29                           | 24.14                            | 162.905           | CC, ES              |
| DREAM WEAVER South 3C-21H-N268 - OH - PLAN #1 | 19,013.28                       | 19,090.64                    | 669.82                          | 299.31                           | 1.808             | SF                  |
| DREAM WEAVER South 3D-21H-N268 - OH - PLAN #1 | 200.00                          | 200.00                       | 12.14                           | 11.65                            | 24.766            | CC                  |
| DREAM WEAVER South 3D-21H-N268 - OH - PLAN #1 | 18,500.00                       | 18,623.79                    | 245.57                          | -88.38                           | 0.735             | Level 1, ES, SF     |
| DREAM WEAVER South 3F-21H-N268 - OH - PLAN #1 | 377.27                          | 377.52                       | 8.92                            | 7.81                             | 8.051             | CC, ES              |
| DREAM WEAVER South 3F-21H-N268 - OH - PLAN #1 | 19,013.28                       | 19,227.98                    | 305.58                          | 21.84                            | 1.077             | Level 2, SF         |
| DREAM WEAVER South 3G-21H-N268 - OH - PLAN #1 | 933.19                          | 935.51                       | 18.49                           | 15.38                            | 5.951             | CC, ES              |
| DREAM WEAVER South 3G-21H-N268 - OH - PLAN #1 | 19,013.28                       | 19,087.34                    | 396.30                          | 32.52                            | 1.089             | Level 2, SF         |
| DREAM WEAVER South 3H-21H-N268 - OH - PLAN #1 | 894.76                          | 902.61                       | 25.39                           | 22.45                            | 8.614             | CC                  |
| DREAM WEAVER South 3H-21H-N268 - OH - PLAN #1 | 900.00                          | 902.63                       | 25.40                           | 22.44                            | 8.590             | ES                  |
| DREAM WEAVER South 3H-21H-N268 - OH - PLAN #1 | 18,800.00                       | 18,757.69                    | 562.60                          | 200.13                           | 1.552             | SF                  |

CC - Min centre to center distance or convergent point, SF - min separation factor, ES - min ellipse separation

# Cathedral Energy Services

## Anticollision Summary Report

|                           |                                |                                     |   |
|---------------------------|--------------------------------|-------------------------------------|---|
| <b>Company:</b>           | Crestone Peak Resources        | <b>Local Co-ordinate Reference:</b> | Well DREAM WEAVER South 3E-21H-N268 -<br>Slot DREAM WEAVER South 3E-21H-N268<br>SHL |
| <b>Project:</b>           | DJ BASIN                       | <b>TVD Reference:</b>               | 23' KB @ 4924.00usft (Original Well Elev)   |
| <b>Reference Site:</b>    | S21-T2N-R68W                   | <b>MD Reference:</b>                | 23' KB @ 4924.00usft (Original Well Elev)   |
| <b>Site Error:</b>        | 0.00 usft                      | <b>North Reference:</b>             | True  |
| <b>Reference Well:</b>    | DREAM WEAVER South 3E-21H-N268 | <b>Survey Calculation Method:</b>   | Minimum Curvature   |
| <b>Well Error:</b>        | 0.00 usft                      | <b>Output errors are at</b>         | 2.00 sigma  |
| <b>Reference Wellbore</b> | OH                             | <b>Database:</b>                    | USA EDM 5000 Multi Users DB   |
| <b>Reference Design:</b>  | PLAN #1                        | <b>Offset TVD Reference:</b>        | Offset Datum  |

| Summary                                       |  |                                       |  |   |                      |         |
|---|--|---------------------------------------|--|---|----------------------|---------|
| Site Name<br>Offset Well - Wellbore - Design  | Reference<br>Measured<br>Depth<br>(usft) | Offset<br>Measured<br>Depth<br>(usft) | Distance<br>Between<br>Centres<br>(usft) | Distance<br>Between<br>Ellipses<br>(usft) | Separation<br>Factor | Warning |
| S21-T2N-R68W                                  |  |                                       |  |   |                      |         |
| DREAM WEAVER South 3I-21H-N268 - OH - PLAN #1 | 759.93                                   | 762.71                                | 40.26                                    | 37.80                                     | 16.370               | CC, ES  |
| DREAM WEAVER South 3I-21H-N268 - OH - PLAN #1 | 19,013.28                                | 19,092.29                             | 999.08                                   | 629.80                                    | 2.706                | SF      |
| DREAM WEAVER South 3J-21H-N268 - OH - PLAN #1 | 700.01                                   | 702.33                                | 53.76                                    | 51.52                                     | 23.906               | CC, ES  |
| DREAM WEAVER South 3J-21H-N268 - OH - PLAN #1 | 19,013.28                                | 19,239.08                             | 1,192.38                                 | 827.18                                    | 3.265                | SF      |
| DREAM WEAVER South 3K-21H-N268 - OH - PLAN #1 | 588.09                                   | 590.29                                | 67.85                                    | 65.99                                     | 36.472               | CC      |
| DREAM WEAVER South 3K-21H-N268 - OH - PLAN #1 | 600.00                                   | 602.09                                | 67.87                                    | 65.97                                     | 35.684               | ES      |
| DREAM WEAVER South 3K-21H-N268 - OH - PLAN #1 | 19,013.28                                | 19,076.22                             | 1,319.77                                 | 949.81                                    | 3.567                | SF      |

# Cathedral Energy Services

## Anticollision Summary Report

|                           |                                |                                     |   |
|---------------------------|--------------------------------|-------------------------------------|---|
| <b>Company:</b>           | Crestone Peak Resources        | <b>Local Co-ordinate Reference:</b> | Well DREAM WEAVER South 3E-21H-N268 - Slot DREAM WEAVER South 3E-21H-N268 SHL |
| <b>Project:</b>           | DJ BASIN                       | <b>TVD Reference:</b>               | 23' KB @ 4924.00usft (Original Well Elev)                                     |
| <b>Reference Site:</b>    | S21-T2N-R68W                   | <b>MD Reference:</b>                | 23' KB @ 4924.00usft (Original Well Elev)                                     |
| <b>Site Error:</b>        | 0.00 usft                      | <b>North Reference:</b>             | True  |
| <b>Reference Well:</b>    | DREAM WEAVER South 3E-21H-N268 | <b>Survey Calculation Method:</b>   | Minimum Curvature   |
| <b>Well Error:</b>        | 0.00 usft                      | <b>Output errors are at</b>         | 2.00 sigma  |
| <b>Reference Wellbore</b> | OH                             | <b>Database:</b>                    | USA EDM 5000 Multi Users DB   |
| <b>Reference Design:</b>  | PLAN #1                        | <b>Offset TVD Reference:</b>        | Offset Datum  |

| Summary  |  |                                       |  |   |                      |              |
|--|--|---------------------------------------|--|---|----------------------|--------------|
| Site Name<br>Offset Well - Wellbore - Design   | Reference<br>Measured<br>Depth<br>(usft) | Offset<br>Measured<br>Depth<br>(usft) | Distance<br>Between<br>Centres<br>(usft) | Distance<br>Between<br>Ellipses<br>(usft) | Separation<br>Factor | Warning      |
| S21-T2N-R68W (OFFSETS)                         |  |                                       |  |   |                      |              |
| ARTHUR STROMQUIST 2 - KMG WELL - GYRO          | 6,693.13                                 | 6,561.09                              | 1,801.56                                 | 1,772.32                                  | 61.625               | CC           |
| ARTHUR STROMQUIST 2 - KMG WELL - GYRO          | 6,700.00                                 | 6,568.07                              | 1,801.59                                 | 1,772.31                                  | 61.549               | ES           |
| ARTHUR STROMQUIST 2 - KMG WELL - GYRO          | 6,900.00                                 | 6,769.26                              | 1,827.90                                 | 1,797.67                                  | 60.460               | SF           |
| BLISS 41-21 - KPK WELL - SURVEYS               |  |                                       |  |   |                      | Out of range |
| BOULDER CREEK 9-4K8 - SNYDER OIL - NO SURVEY   |  |                                       |  |   |                      | Out of range |
| BROWN C UNIT 1 - CPR WELL - GYRO               |  |                                       |  |   |                      | Out of range |
| CANINO 1 - HUGHES C W-SOTEXCO 1 - NO SURVEY    |  |                                       |  |   |                      | Out of range |
| CHAMPLIN 41-4/1-68/ 1 - KMG WELL - NO SURVEYS  |  |                                       |  |   |                      | Out of range |
| CHAMPLIN 86 AMOCO B 2 - KPK WELL - NO SURVEY   |  |                                       |  |   |                      | Out of range |
| CHAMPLIN 86 AMOCO UT/Q 1 - KMG WELL - GYRO     |  |                                       |  |   |                      | Out of range |
| CHAMPLIN 86 AMOCO-B 1 - KPK WELL - NO SURVEY   |  |                                       |  |   |                      | Out of range |
| CHAMPLIN 86 AMOCO-B 3 - KPK WELL - NO SURVEY   |  |                                       |  |   |                      | Out of range |
| CHAMPLIN 86 AMOCO-B 4 - KPK WELL - NO SURVEY   |  |                                       |  |   |                      | Out of range |
| CHAMPLIN 86 AMOCO-B 5 - KPK WELL - NO SURVEY   |  |                                       |  |   |                      | Out of range |
| CHAMPLIN 86 AMOCO-B 6 - KPK WELL - NO SURVEY   |  |                                       |  |   |                      | Out of range |
| CHAMPLIN 86 AMOCO-F 5 - KPK WELL - NO SURVEY   |  |                                       |  |   |                      | Out of range |
| CHAMPLIN 86 AMOCO-O 9 - KMG WELL - GYRO        | 19,013.28                                | 7,434.50                              | 1,791.42                                 | 1,751.72                                  | 45.119               | CC, ES, SF   |
| CHAMPLIN32-4/1-68/ 2 - KMG WELL - NO SURVEYS   |  |                                       |  |   |                      | Out of range |
| CHMPLN 86 AMOCO-F 1 - KPK WELL - NO SURVEYS    |  |                                       |  |   |                      | Out of range |
| COLCLASURE 42-21 - KPK WELL - NO SURVEYS       |  |                                       |  |   |                      | Out of range |
| COOLEY 11-16 - KMG WELL - SURVEYS              |  |                                       |  |   |                      | Out of range |
| COOLEY 12-16 - KMG WELL - SURVEYS              |  |                                       |  |   |                      | Out of range |
| COOLEY 13-16 - KMG WELL - SURVEYS              |  |                                       |  |   |                      | Out of range |
| COOLEY 14-16 - KMG WELL - SURVEYS              |  |                                       |  |   |                      | Out of range |
| COOLEY 22-16 - KMG WELL - SURVEYS              |  |                                       |  |   |                      | Out of range |
| COOLEY 23-16 - KMG WELL - SURVEYS              |  |                                       |  |   |                      | Out of range |
| COOLEY 35-16 - KMG WELL - SURVEYS              |  |                                       |  |   |                      | Out of range |
| COPPER 31-15 - KMG WELL - SURVEYS              |  |                                       |  |   |                      | Out of range |
| CPC 31-4 (1-68) 3 - ANADARKO WELL - NO SURVEYS |  |                                       |  |   |                      | Out of range |
| CPC 42-4 (1-68) 4 - ANADARKO WELL - NO SURVEYS |  |                                       |  |   |                      | Out of range |
| DOMENICO 1 - NOBLE WELL - GYRO                 |  |                                       |  |   |                      | Out of range |
| DUCKWORTH 31-16 - CPR WELL - GYRO              |  |                                       |  |   |                      | Out of range |
| DUCKWORTH 32-16 - CPR WELL - SURVEYS           |  |                                       |  |   |                      | Out of range |
| DUCKWORTH 33-16 - CPR WELL - SURVEYS           |  |                                       |  |   |                      | Out of range |
| DUCKWORTH 41-16 - CPR WELL - SURVEYS           |  |                                       |  |   |                      | Out of range |
| DUCKWORTH 43-16 - CPR WELL - GYRO              |  |                                       |  |   |                      | Out of range |
| DUCKWORTH 44-16 - CPR WELL - SURVEYS           |  |                                       |  |   |                      | Out of range |
| DUCKWORTH 6-0-16 - CPR WELL - SURVEYS          |  |                                       |  |   |                      | Out of range |
| DUCKWORTH B UNIT 1 - CPR WELL - GYRO           |  |                                       |  |   |                      | Out of range |
| DUCKWORTH B UNIT 2 - CPR WELL - GYRO           |  |                                       |  |   |                      | Out of range |
| EAST RINN 0-4-15 - CPR WELL - SURVEYS          |  |                                       |  |   |                      | Out of range |
| EAST RINN 13-15 - CPR WELL - SURVEYS           |  |                                       |  |   |                      | Out of range |
| EDITH ANN 1 - CPR WELL - GYRO                  |  |                                       |  |   |                      | Out of range |
| EDITH ANN 33-21 - CPR WELL - GYRO              | 1,667.38                                 | 1,664.20                              | 1,677.34                                 | 1,671.68                                  | 296.472              | CC           |
| EDITH ANN 33-21 - CPR WELL - GYRO              | 1,900.00                                 | 1,894.76                              | 1,677.76                                 | 1,671.28                                  | 258.964              | ES           |
| EDITH ANN 33-21 - CPR WELL - GYRO              | 7,000.00                                 | 6,912.45                              | 1,901.86                                 | 1,869.71                                  | 59.156               | SF           |
| EDITH ANN 34-21 - CPR WELL - GYRO              | 767.90                                   | 782.63                                | 1,325.95                                 | 1,323.44                                  | 527.979              | CC           |
| EDITH ANN 34-21 - CPR WELL - GYRO              | 800.00                                   | 816.62                                | 1,326.05                                 | 1,323.42                                  | 504.716              | ES           |
| EDITH ANN 34-21 - CPR WELL - GYRO              | 8,700.00                                 | 7,295.30                              | 1,883.36                                 | 1,843.28                                  | 46.989               | SF           |
| EDITH ANN 4-21 - CPR WELL - SURVEYS            |  |                                       |  |   |                      | Out of range |
| EDITH ANN 44-21 - CPR WELL - GYRO              |  |                                       |  |   |                      | Out of range |

CC - Min centre to center distance or convergent point, SF - min separation factor, ES - min ellipse separation

# Cathedral Energy Services

## Anticollision Summary Report

|                           |                                |                                     |   |
|---------------------------|--------------------------------|-------------------------------------|---|
| <b>Company:</b>           | Crestone Peak Resources        | <b>Local Co-ordinate Reference:</b> | Well DREAM WEAVER South 3E-21H-N268 - Slot DREAM WEAVER South 3E-21H-N268 SHL |
| <b>Project:</b>           | DJ BASIN                       | <b>TVD Reference:</b>               | 23' KB @ 4924.00usft (Original Well Elev)                                     |
| <b>Reference Site:</b>    | S21-T2N-R68W                   | <b>MD Reference:</b>                | 23' KB @ 4924.00usft (Original Well Elev)                                     |
| <b>Site Error:</b>        | 0.00 usft                      | <b>North Reference:</b>             | True  |
| <b>Reference Well:</b>    | DREAM WEAVER South 3E-21H-N268 | <b>Survey Calculation Method:</b>   | Minimum Curvature   |
| <b>Well Error:</b>        | 0.00 usft                      | <b>Output errors are at</b>         | 2.00 sigma  |
| <b>Reference Wellbore</b> | OH                             | <b>Database:</b>                    | USA EDM 5000 Multi Users DB   |
| <b>Reference Design:</b>  | PLAN #1                        | <b>Offset TVD Reference:</b>        | Offset Datum  |

| Summary                                       |  |                                       |  |   |                      |              |
|---|--|---------------------------------------|--|---|----------------------|--------------|
| Site Name<br>Offset Well - Wellbore - Design  | Reference<br>Measured<br>Depth<br>(usft) | Offset<br>Measured<br>Depth<br>(usft) | Distance<br>Between<br>Centres<br>(usft) | Distance<br>Between<br>Ellipses<br>(usft) | Separation<br>Factor | Warning      |
| S21-T2N-R68W (OFFSETS)                        |  |                                       |  |   |                      |              |
| EDITH ANN 6-8-21 - CPR WELL - SURVEYS         |  |                                       |  |   |                      | Out of range |
| EDITH ANN 8-8-21 - CPR WELL - SURVEYS         |  |                                       |  |   |                      | Out of range |
| EDITH ANN-DUCKWORTH 4A-21H-O268 - CPR - FINAL | 7,451.38                                 | 8,382.63                              | 1,483.23                                 | 1,438.78                                  | 33.368               | CC, ES, SF   |
| EDITH ANN-DUCKWORTH 4B-21H-O268 - CPR - FINAL | 7,100.00                                 | 8,837.10                              | 1,868.44                                 | 1,819.26                                  | 37.992               | SF           |
| EDITH ANN-DUCKWORTH 4B-21H-O268 - CPR - FINAL | 7,365.05                                 | 8,656.07                              | 1,853.69                                 | 1,806.22                                  | 39.052               | CC, ES       |
| EDITH ANN-DUCKWORTH 4C-21H-O268 - CPR - FINA  | 975.41                                   | 1,163.02                              | 2,164.18                                 | 2,160.58                                  | 600.601              | CC, ES       |
| EDITH ANN-DUCKWORTH 4C-21H-O268 - CPR - FINA  | 2,100.00                                 | 2,268.08                              | 2,231.02                                 | 2,223.41                                  | 292.999              | SF           |
| EDITH ANN-DUCKWORTH 4D-21H-O268 - CPR - FINA  | 823.19                                   | 923.49                                | 2,192.92                                 | 2,190.01                                  | 753.979              | CC, ES       |
| EDITH ANN-DUCKWORTH 4D-21H-O268 - CPR - FINA  | 1,500.00                                 | 1,619.43                              | 2,231.80                                 | 2,226.43                                  | 415.641              | SF           |
| EDITH ANN-DUCKWORTH 4E-21H-O268 - CPR - FINAL | 718.40                                   | 759.42                                | 2,215.44                                 | 2,213.01                                  | 913.501              | CC, ES       |
| EDITH ANN-DUCKWORTH 4E-21H-O268 - CPR - FINAL | 1,000.00                                 | 1,011.19                              | 2,227.39                                 | 2,224.03                                  | 661.973              | SF           |
| EDITH ANN-DUCKWORTH 4F-21H-O268 - CPR - FINAL | 364.09                                   | 395.59                                | 2,229.22                                 | 2,228.04                                  | 1,901.171            | CC           |
| EDITH ANN-DUCKWORTH 4F-21H-O268 - CPR - FINAL | 400.00                                   | 426.84                                | 2,229.25                                 | 2,227.96                                  | 1,728.858            | ES           |
| EDITH ANN-DUCKWORTH 4F-21H-O268 - CPR - FINAL | 700.00                                   | 637.81                                | 2,236.03                                 | 2,233.85                                  | 1,024.438            | SF           |
| EDITH ANN-DUCKWORTH 4G-21H-O268 - CPR - FINA  | 201.61                                   | 233.13                                | 2,229.99                                 | 2,229.38                                  | 3,649.802            | CC, ES       |
| EDITH ANN-DUCKWORTH 4G-21H-O268 - CPR - FINA  | 500.00                                   | 464.00                                | 2,234.25                                 | 2,232.71                                  | 1,457.457            | SF           |
| EDITH ANN-DUCKWORTH 4H-21H-O268 - CPR - FINA  |  |                                       |  |   |                      | Out of range |
| ERIE CORP 42-4 - KMG WELL - NO SURVEYS        |  |                                       |  |   |                      | Out of range |
| EVERIST 12-10 - KMG WELL - SURVEYS            |  |                                       |  |   |                      | Out of range |
| EVERIST 12-10X - KMG WELL - NO SURVEYS        |  |                                       |  |   |                      | Out of range |
| EVERIST 13-10 - KMG WELL - SURVEYS            |  |                                       |  |   |                      | Out of range |
| EVERIST 33-10 - KMG WELL - SURVEYS            |  |                                       |  |   |                      | Out of range |
| FAIRVIEW 1 - EXTRACTION WELL - NO SURVEYS     |  |                                       |  |   |                      | Out of range |
| FAIRVIEW 3 - EXTRACTION O&G LLC - SURVEYS     |  |                                       |  |   |                      | Out of range |
| FAIRVIEW 4 - EXTRACTION O&G LLC - SURVEYS     |  |                                       |  |   |                      | Out of range |
| FAIRVIEW 5 - EXTRACTION O&G LLC - SURVEYS     |  |                                       |  |   |                      | Out of range |
| FILE 1-17 - CPR WELL - SURVEYS                |  |                                       |  |   |                      | Out of range |
| FILE 31-17 - CPR WELL - SURVEYS               |  |                                       |  |   |                      | Out of range |
| FILE 32-17 - CPR WELL - SURVEYS               |  |                                       |  |   |                      | Out of range |
| FILE 41-17 - CPR WELL - SURVEYS               |  |                                       |  |   |                      | Out of range |
| FILE 42-17 - CPR WELL - NO SURVEYS            |  |                                       |  |   |                      | Out of range |
| FILE 4-2-17 - CPR WELL - SURVEYS              |  |                                       |  |   |                      | Out of range |
| FILE 42-17X - CPR WELL - SURVEYS              |  |                                       |  |   |                      | Out of range |
| FILE 6-0-17 - CPR WELL - SURVEYS              |  |                                       |  |   |                      | Out of range |
| FILE 8-2-17 - CPR WELL - SURVEYS              |  |                                       |  |   |                      | Out of range |
| FREDERICKS 13-27 - KMG WELL - NO SURVEYS      |  |                                       |  |   |                      | Out of range |
| FREDERICKS 13-27X - KMG WELL - SURVEYS        |  |                                       |  |   |                      | Out of range |
| GARVER U 34-5JI - KMG WELL - NO SURVEYS       |  |                                       |  |   |                      | Out of range |
| HINGLEY 1 - KPK WELL - NO SURVEYS             |  |                                       |  |   |                      | Out of range |
| HINGLEY 2 - KPK WELL - NO SUREYS              |  |                                       |  |   |                      | Out of range |
| HSR-STROMQUIST 14-21 - KMG WELL - GYRO        | 7,700.05                                 | 7,296.52                              | 201.73                                   | 168.05                                    | 5.990                | CC, ES, SF   |
| JACK A MLEYNEK 2 - KPK WELL - NO SURVEYS      |  |                                       |  |   |                      | Out of range |
| JACK MLEYNEK 1 - KPK WELL - NO SURVEYS        |  |                                       |  |   |                      | Out of range |
| JACK MLEYNEK 3 - KPK WELL - NO SURVEYS        |  |                                       |  |   |                      | Out of range |
| JACK MLEYNEK 4 - KPK WELL - NO SURVEYS        |  |                                       |  |   |                      | Out of range |
| JACK MLEYNEK 5 - KPK WELL - NO SURVEYS        |  |                                       |  |   |                      | Out of range |
| JILLSON 0-6-22 - CPR WELL - SURVEYS           |  |                                       |  |   |                      | Out of range |
| JILLSON 1 - KPK WELL - NO SURVEYS             |  |                                       |  |   |                      | Out of range |
| JILLSON 11-22 - CPR WELL - GYRO               |  |                                       |  |   |                      | Out of range |
| JILLSON 12-22 - CPR WELL - GYRO               |  |                                       |  |   |                      | Out of range |
| JILLSON 14-22 - CPR WELL - GYRO               |  |                                       |  |   |                      | Out of range |

CC - Min centre to center distance or convergent point, SF - min separation factor, ES - min ellipse separation

# Cathedral Energy Services

## Anticollision Summary Report

|                           |                                |                                     |   |
|---------------------------|--------------------------------|-------------------------------------|---|
| <b>Company:</b>           | Crestone Peak Resources        | <b>Local Co-ordinate Reference:</b> | Well DREAM WEAVER South 3E-21H-N268 - Slot DREAM WEAVER South 3E-21H-N268 SHL |
| <b>Project:</b>           | DJ BASIN                       | <b>TVD Reference:</b>               | 23' KB @ 4924.00usft (Original Well Elev)                                     |
| <b>Reference Site:</b>    | S21-T2N-R68W                   | <b>MD Reference:</b>                | 23' KB @ 4924.00usft (Original Well Elev)                                     |
| <b>Site Error:</b>        | 0.00 usft                      | <b>North Reference:</b>             | True  |
| <b>Reference Well:</b>    | DREAM WEAVER South 3E-21H-N268 | <b>Survey Calculation Method:</b>   | Minimum Curvature   |
| <b>Well Error:</b>        | 0.00 usft                      | <b>Output errors are at</b>         | 2.00 sigma  |
| <b>Reference Wellbore</b> | OH                             | <b>Database:</b>                    | USA EDM 5000 Multi Users DB   |
| <b>Reference Design:</b>  | PLAN #1                        | <b>Offset TVD Reference:</b>        | Offset Datum  |

| Summary   |  |                                       |  |   |                      |              |
|---|--|---------------------------------------|--|---|----------------------|--------------|
| Site Name<br>Offset Well - Wellbore - Design    | Reference<br>Measured<br>Depth<br>(usft) | Offset<br>Measured<br>Depth<br>(usft) | Distance<br>Between<br>Centres<br>(usft) | Distance<br>Between<br>Ellipses<br>(usft) | Separation<br>Factor | Warning      |
| S21-T2N-R68W (OFFSETS)                          |  |                                       |  |   |                      |              |
| JILLSON 3 - KPK WELL - NO SURVEYS               |  |                                       |  |   |                      | Out of range |
| JILLSON 5 - KPK WELL - NO SURVEYS               |  |                                       |  |   |                      | Out of range |
| JILLSON A 1 - KPK WELL - NO SURVEYS             | 700.00                                   | 675.99                                | 1,445.86                                 | 1,443.56                                  | 629.869              | CC, ES       |
| JILLSON A 1 - KPK WELL - NO SURVEYS             | 5,500.00                                 | 5,416.73                              | 2,054.36                                 | 2,031.24                                  | 88.855               | SF           |
| JILLSON A 2 - KPK WELL - NO SURVEYS             | 1,179.73                                 | 1,152.31                              | 1,707.76                                 | 1,703.78                                  | 428.646              | CC, ES       |
| JILLSON A 2 - KPK WELL - NO SURVEYS             | 5,500.00                                 | 5,416.73                              | 1,877.16                                 | 1,852.95                                  | 77.519               | SF           |
| JILLSON A 3 - KPK WELL - NO SURVEYS             |  |                                       |  |   |                      | Out of range |
| JILLSON A 4 - KPK WELL - NO SURVEYS             |  |                                       |  |   |                      | Out of range |
| JILLSON-EAST RINN 3A-22H-M268 - CPR WELL - SUR  |  |                                       |  |   |                      | Out of range |
| JILLSON-EAST RINN 3B-22H-M268 - CPR WELL - SUR  |  |                                       |  |   |                      | Out of range |
| JILLSON-EAST RINN 3C-22H-M268 - CPR WELL - SUR  |  |                                       |  |   |                      | Out of range |
| KENNEDY 1 - MACEY & MERSHON WELL - NO SURVE     |  |                                       |  |   |                      | Out of range |
| KENNEDY 31-21 - CPR WELL - GYRO                 |  |                                       |  |   |                      | Out of range |
| KENNEDY 32-21 - CPR WELL - GYRO                 |  |                                       |  |   |                      | Out of range |
| KENNEDY 41-21 - CPR WELL - GYRO                 |  |                                       |  |   |                      | Out of range |
| KENNEDY 4-2-21 - CPR WELL - SURVEYS             |  |                                       |  |   |                      | Out of range |
| KENNEDY 6-0-21 - CPR WELL - SURVEYS             |  |                                       |  |   |                      | Out of range |
| KENNEDY 6-4-21 - CPR WELL - SURVEYS             |  |                                       |  |   |                      | Out of range |
| KENNEDY 8-0-21 - CPR WELL - SURVEYS             |  |                                       |  |   |                      | Out of range |
| KENNEDY GAS UNIT 1 - CPR WELL - GYRO            |  |                                       |  |   |                      | Out of range |
| LONGMONT 8-10K - TOP OPERATING WELL - NO SUR    |  |                                       |  |   |                      | Out of range |
| LONGMONT FARMS 1 - KPK WELL - NO SURVEYS        |  |                                       |  |   |                      | Out of range |
| LONGMONT FARMS 3 - KPK WELL - NO SURVEYS        |  |                                       |  |   |                      | Out of range |
| MAX SERAFINI 1 - KPK WELL - NO SURVEYS          |  |                                       |  |   |                      | Out of range |
| MAX SERAFINI C 1 - KPK WELL - NO SURVEYS        |  |                                       |  |   |                      | Out of range |
| MILES 1 - KPK WELL - NO SURVEYS                 |  |                                       |  |   |                      | Out of range |
| MILES 33-3M - KMG WELL - GYRO                   | 15,123.87                                | 7,397.10                              | 332.41                                   | 195.70                                    | 2.431                | CC, ES, SF   |
| MILES 4 - KPK WELL - NO SURVEYS                 |  |                                       |  |   |                      | Out of range |
| MILES 5 - KPK WELL - NO SURVEYS                 |  |                                       |  |   |                      | Out of range |
| MILES JOSEPHINE 1 - KPK WELL - NO SURVEYS       |  |                                       |  |   |                      | Out of range |
| MILES JOSEPHINE 2 - KPK WELL - NO SURVEYS       |  |                                       |  |   |                      | Out of range |
| MILES JOSEPHINE B 1 - KPK WELL - NO SURVEYS     |  |                                       |  |   |                      | Out of range |
| MILLER 12-27 - CPR WELL - GYRO                  |  |                                       |  |   |                      | Out of range |
| MILTON NELSON 1 - KPK WELL - NO SURVEYS         | 5,038.29                                 | 4,966.00                              | 611.45                                   | 587.21                                    | 25.222               | CC, ES       |
| MILTON NELSON 1 - KPK WELL - NO SURVEYS         | 5,100.00                                 | 4,960.00                              | 614.18                                   | 589.44                                    | 24.824               | SF           |
| MILTON NELSON UN-C 1 - KPK WELL - NO SURVEYS    | 2,711.94                                 | 2,674.72                              | 1,094.06                                 | 1,083.65                                  | 105.110              | CC           |
| MILTON NELSON UN-C 1 - KPK WELL - NO SURVEYS    | 2,900.00                                 | 2,860.36                              | 1,094.47                                 | 1,083.11                                  | 96.307               | ES           |
| MILTON NELSON UN-C 1 - KPK WELL - NO SURVEYS    | 5,500.00                                 | 5,227.00                              | 1,198.56                                 | 1,171.77                                  | 44.742               | SF           |
| MILTON NELSON UNIT 1 - KPK WELL - NO SURVEYS    | 700.00                                   | 684.00                                | 390.15                                   | 387.60                                    | 153.080              | CC, ES       |
| MILTON NELSON UNIT 1 - KPK WELL - NO SURVEYS    | 5,100.00                                 | 4,977.00                              | 1,054.04                                 | 1,030.91                                  | 45.566               | SF           |
| MLEYNEK 28-10M - KMG WELL - GYRO                |  |                                       |  |   |                      | Out of range |
| MLEYNEK U 28-10JI - KMG WELL - GYRO             | 12,007.60                                | 7,386.07                              | 2,002.41                                 | 1,914.18                                  | 22.695               | CC, ES       |
| MLEYNEK U 28-10JI - KMG WELL - GYRO             | 12,300.00                                | 7,382.11                              | 2,023.64                                 | 1,932.49                                  | 22.200               | SF           |
| MLEYNEK U 28-15JI - KMG WELL - GYRO             | 13,664.80                                | 7,407.88                              | 1,965.71                                 | 1,851.76                                  | 17.251               | CC           |
| MLEYNEK U 28-15JI - KMG WELL - GYRO             | 13,700.00                                | 7,407.82                              | 1,966.02                                 | 1,851.64                                  | 17.188               | ES           |
| MLEYNEK U 28-15JI - KMG WELL - GYRO             | 13,900.00                                | 7,407.48                              | 1,979.73                                 | 1,863.46                                  | 17.027               | SF           |
| MORGAN-A 4 - KPK WELL - NO SURVEYS              |  |                                       |  |   |                      | Out of range |
| NELSON 42-33 /2-68/ 2 - ANADARKO WELL - NO SURV |  |                                       |  |   |                      | Out of range |
| NELSON DUANE E 41-33 (2-68) 1 - CHAMPLIN PETRO  |  |                                       |  |   |                      | Out of range |
| NELSON DUANE E 41-33 (2-68) 1-X - KMG WELL - NO |  |                                       |  |   |                      | Out of range |
| NELSON E UNIT 2 - CPR WELL - GYRO               |  |                                       |  |   |                      | Out of range |

CC - Min centre to center distance or convergent point, SF - min separation factor, ES - min ellipse separation



# Cathedral Energy Services

## Anticollision Summary Report

|                           |                                |                                     |   |
|---------------------------|--------------------------------|-------------------------------------|---|
| <b>Company:</b>           | Crestone Peak Resources        | <b>Local Co-ordinate Reference:</b> | Well DREAM WEAVER South 3E-21H-N268 - Slot DREAM WEAVER South 3E-21H-N268 SHL |
| <b>Project:</b>           | DJ BASIN                       | <b>TVD Reference:</b>               | 23' KB @ 4924.00usft (Original Well Elev)                                     |
| <b>Reference Site:</b>    | S21-T2N-R68W                   | <b>MD Reference:</b>                | 23' KB @ 4924.00usft (Original Well Elev)                                     |
| <b>Site Error:</b>        | 0.00 usft                      | <b>North Reference:</b>             | True  |
| <b>Reference Well:</b>    | DREAM WEAVER South 3E-21H-N268 | <b>Survey Calculation Method:</b>   | Minimum Curvature   |
| <b>Well Error:</b>        | 0.00 usft                      | <b>Output errors are at</b>         | 2.00 sigma  |
| <b>Reference Wellbore</b> | OH                             | <b>Database:</b>                    | USA EDM 5000 Multi Users DB   |
| <b>Reference Design:</b>  | PLAN #1                        | <b>Offset TVD Reference:</b>        | Offset Datum  |

| Summary                                    |                                 |                              |                                 |                                  |                   |                     |
|--|---------------------------------|------------------------------|---------------------------------|----------------------------------|-------------------|---------------------|
| Site Name                                  | Reference Measured Depth (usft) | Offset Measured Depth (usft) | Distance Between Centres (usft) | Distance Between Ellipses (usft) | Separation Factor | Warning             |
| S21-T2N-R68W (OFFSETS)                     |                                 |                              |                                 |                                  |                   |                     |
| NELSON MILTON H 'D' 1 - KMG WELL - GYRO    | 10,897.57                       | 7,286.71                     | 1,998.82                        | 1,927.41                         | 27.992            | CC                  |
| NELSON MILTON H 'D' 1 - KMG WELL - GYRO    | 10,900.00                       | 7,286.71                     | 1,998.82                        | 1,927.37                         | 27.976            | ES                  |
| NELSON MILTON H 'D' 1 - KMG WELL - GYRO    | 11,400.00                       | 7,287.00                     | 2,061.00                        | 1,982.96                         | 26.410            | SF                  |
| NELSON MILTON H 'M' 1 - KMG WELL - GYRO    | 12,207.16                       | 7,312.49                     | 2,008.59                        | 1,917.36                         | 22.018            | CC, ES              |
| NELSON MILTON H 'M' 1 - KMG WELL - GYRO    | 12,600.00                       | 7,313.06                     | 2,046.65                        | 1,949.81                         | 21.136            | SF                  |
| NELSON MILTON-F 1 - KPK WELL - NO SURVEYS  |                                 |                              |                                 |                                  |                   | Out of range        |
| NORTH RINN 0-4-9 - CPR WELL - SURVEYS      |                                 |                              |                                 |                                  |                   | Out of range        |
| NORTH RINN 0-6-9 - CPR WELL - SURVEYS      |                                 |                              |                                 |                                  |                   | Out of range        |
| NORTH RINN 0-8-9 - CPR WELL - SURVEYS      |                                 |                              |                                 |                                  |                   | Out of range        |
| NORTH RINN 13-9 - CPR WELL - SURVEYS       |                                 |                              |                                 |                                  |                   | Out of range        |
| NORTH RINN 14-9 - CPR WELL - SURVEYS       |                                 |                              |                                 |                                  |                   | Out of range        |
| NORTH RINN 24-9 - CPR WELL - SURVEYS       |                                 |                              |                                 |                                  |                   | Out of range        |
| NORTH RINN 2-4-9 - CPR WELL - SURVEYS      |                                 |                              |                                 |                                  |                   | Out of range        |
| NORTH RINN 2-6-9 - CPR WELL - SURVEYS      |                                 |                              |                                 |                                  |                   | Out of range        |
| OSKARSON 1 - HRM RES II LLC - NO SURVEYS   |                                 |                              |                                 |                                  |                   | Out of range        |
| OSKARSON 2 - ENERVEST OP - NO SURVEYS      |                                 |                              |                                 |                                  |                   | Out of range        |
| OSKARSON 24-33 - CPR WELL - GYRO           | 18,941.87                       | 7,407.46                     | 759.49                          | 562.48                           | 3.855             | CC, ES, SF          |
| OSKARSON 2-8-33 - CPR WELL - SURVEYS       | 19,013.28                       | 7,508.52                     | 422.70                          | 324.54                           | 4.306             | CC, ES, SF          |
| OSKARSON 3 - HRM RES II LLC - NO SURVEYS   |                                 |                              |                                 |                                  |                   | Out of range        |
| OSKARSON-E 1 - CPR WELL - GYRO             | 18,539.10                       | 7,381.46                     | 365.24                          | 174.62                           | 1.916             | CC, ES, SF          |
| OSKARSON-E 2 - CPR WELL - NO SURVEYS       |                                 |                              |                                 |                                  |                   | Out of range        |
| RASMUSSEN 3 - PETERSON ENERGY - GYRO       |                                 |                              |                                 |                                  |                   | Out of range        |
| RASMUSSEN 1 - PETERSON - GYRO              | 318.34                          | 344.33                       | 1,649.47                        | 1,648.48                         | 1,666.114         | CC                  |
| RASMUSSEN 1 - PETERSON - GYRO              | 400.00                          | 422.34                       | 1,649.55                        | 1,648.28                         | 1,297.302         | ES                  |
| RASMUSSEN 1 - PETERSON - GYRO              | 4,800.00                        | 4,781.10                     | 2,224.89                        | 2,205.40                         | 114.177           | SF                  |
| RASMUSSEN 11-28 - CPR WELL - SURVEYS       | 9,400.00                        | 7,637.58                     | 518.87                          | 450.86                           | 7.629             | ES, SF              |
| RASMUSSEN 11-28 - CPR WELL - SURVEYS       | 9,404.11                        | 7,637.57                     | 518.85                          | 450.87                           | 7.633             | CC                  |
| RASMUSSEN 12-28 - CPR WELL - SURVEYS       | 10,916.30                       | 7,452.60                     | 582.92                          | 506.82                           | 7.660             | CC, ES              |
| RASMUSSEN 12-28 - CPR WELL - SURVEYS       | 11,000.00                       | 7,451.82                     | 588.90                          | 511.04                           | 7.564             | SF                  |
| RASMUSSEN 2 - PETERSON ENERGY - NO SURVEYS | 700.00                          | 712.00                       | 2,191.27                        | 2,188.66                         | 840.536           | CC, ES              |
| RASMUSSEN 2 - PETERSON ENERGY - NO SURVEYS | 1,100.00                        | 1,109.56                     | 2,225.44                        | 2,221.22                         | 527.298           | SF                  |
| RASMUSSEN 21-28 - CPR WELL - GYRO          | 9,453.93                        | 7,312.83                     | 527.05                          | 476.06                           | 10.337            | CC, ES              |
| RASMUSSEN 21-28 - CPR WELL - GYRO          | 9,500.00                        | 7,312.63                     | 529.06                          | 477.84                           | 10.330            | SF                  |
| RASMUSSEN 22-28 - CPR WELL - GYRO          | 10,793.07                       | 7,355.19                     | 456.70                          | 386.59                           | 6.515             | CC, ES              |
| RASMUSSEN 22-28 - CPR WELL - GYRO          | 10,800.00                       | 7,355.27                     | 456.75                          | 386.61                           | 6.512             | SF                  |
| RASMUSSEN 2-4-28 - CPR WELL - SURVEYS      | 11,424.05                       | 7,401.04                     | 88.13                           | 2.32                             | 1.027             | Level 2, CC, ES, SF |
| RASMUSSEN 31-28 - CPR WELL - GYRO          | 9,396.68                        | 7,332.02                     | 1,948.18                        | 1,898.04                         | 38.853            | CC                  |
| RASMUSSEN 31-28 - CPR WELL - GYRO          | 9,400.00                        | 7,332.05                     | 1,948.18                        | 1,898.00                         | 38.823            | ES                  |
| RASMUSSEN 31-28 - CPR WELL - GYRO          | 9,900.00                        | 7,336.14                     | 2,012.14                        | 1,957.10                         | 36.556            | SF                  |
| RASMUSSEN 32-28 32-28 - CPR WELL - GYRO    | 10,951.09                       | 7,327.04                     | 1,814.36                        | 1,742.13                         | 25.119            | CC, ES              |
| RASMUSSEN 32-28 32-28 - CPR WELL - GYRO    | 11,300.00                       | 7,324.98                     | 1,847.61                        | 1,771.96                         | 24.423            | SF                  |
| RASMUSSEN 4-0-28 - CPR WELL - SURVEYS      | 8,844.17                        | 7,774.93                     | 1,366.43                        | 1,297.89                         | 19.938            | CC, ES              |
| RASMUSSEN 4-0-28 - CPR WELL - SURVEYS      | 8,900.00                        | 7,773.99                     | 1,367.57                        | 1,298.96                         | 19.935            | SF                  |
| RASMUSSEN 41-28 - CPR WELL - GYRO          |                                 |                              |                                 |                                  |                   | Out of range        |
| RASMUSSEN 42-28 - CPR WELL - SURVEYS       |                                 |                              |                                 |                                  |                   | Out of range        |
| RASMUSSEN 4-2-28 - CPR WELL - SURVEYS      | 10,122.50                       | 7,491.40                     | 1,422.15                        | 1,354.55                         | 21.037            | CC, ES              |
| RASMUSSEN 4-2-28 - CPR WELL - SURVEYS      | 10,200.00                       | 7,491.20                     | 1,424.26                        | 1,356.22                         | 20.932            | SF                  |
| RASMUSSEN 4-4-28 - CPR WELL - SURVEYS      | 11,488.56                       | 7,462.64                     | 1,345.31                        | 1,257.46                         | 15.314            | CC, ES              |
| RASMUSSEN 4-4-28 - CPR WELL - SURVEYS      | 11,700.00                       | 7,463.46                     | 1,361.69                        | 1,270.88                         | 14.995            | SF                  |
| RASMUSSEN 44-29 - KPK WELL - NO SURVEYS    |                                 |                              |                                 |                                  |                   | Out of range        |
| RASMUSSEN 4-A - PETERSON ENERGY - GYRO     | 0.00                            | 0.00                         | 2,025.28                        |                                  |                   |                     |

CC - Min centre to center distance or convergent point, SF - min separation factor, ES - min ellipse separation

# Cathedral Energy Services

## Anticollision Summary Report

|                           |                                |                                     |   |
|---------------------------|--------------------------------|-------------------------------------|---|
| <b>Company:</b>           | Crestone Peak Resources        | <b>Local Co-ordinate Reference:</b> | Well DREAM WEAVER South 3E-21H-N268 - Slot DREAM WEAVER South 3E-21H-N268 SHL |
| <b>Project:</b>           | DJ BASIN                       | <b>TVD Reference:</b>               | 23' KB @ 4924.00usft (Original Well Elev)                                     |
| <b>Reference Site:</b>    | S21-T2N-R68W                   | <b>MD Reference:</b>                | 23' KB @ 4924.00usft (Original Well Elev)                                     |
| <b>Site Error:</b>        | 0.00 usft                      | <b>North Reference:</b>             | True  |
| <b>Reference Well:</b>    | DREAM WEAVER South 3E-21H-N268 | <b>Survey Calculation Method:</b>   | Minimum Curvature   |
| <b>Well Error:</b>        | 0.00 usft                      | <b>Output errors are at</b>         | 2.00 sigma  |
| <b>Reference Wellbore</b> | OH                             | <b>Database:</b>                    | USA EDM 5000 Multi Users DB   |
| <b>Reference Design:</b>  | PLAN #1                        | <b>Offset TVD Reference:</b>        | Offset Datum  |

| Summary                                      |  |                                       |  |   |                      |                     |
|--|--|---------------------------------------|--|---|----------------------|---------------------|
| Site Name<br>Offset Well - Wellbore - Design | Reference<br>Measured<br>Depth<br>(usft) | Offset<br>Measured<br>Depth<br>(usft) | Distance<br>Between<br>Centres<br>(usft) | Distance<br>Between<br>Ellipses<br>(usft) | Separation<br>Factor | Warning             |
| S21-T2N-R68W (OFFSETS)                       |  |                                       |  |   |                      |                     |
| RASMUSSEN 4-A - PETERSON ENERGY - GYRO       | 700.00                                   | 681.40                                | 2,027.13                                 | 2,024.90                                  | 907.374              | ES                  |
| RASMUSSEN 4-A - PETERSON ENERGY - GYRO       | 3,600.00                                 | 3,537.68                              | 2,231.86                                 | 2,218.40                                  | 165.846              | SF                  |
| RASMUSSEN C" 2" - CPR WELL - GYRO            |  |                                       |  |   |                      | Out of range        |
| RASMUSSEN-C-UNIT 1 - CPR WELL - GYRO         | 9,994.17                                 | 7,320.21                              | 412.29                                   | 353.94                                    | 7.066                | CC                  |
| RASMUSSEN-C-UNIT 1 - CPR WELL - GYRO         | 10,000.00                                | 7,320.06                              | 412.33                                   | 353.85                                    | 7.051                | ES, SF              |
| RODGERS 1 - KPK WELL - NO SURVEYS            |  |                                       |  |   |                      | Out of range        |
| SAUNDERS TRUST 8-2K8 - EXTRACTION WELL - NO  |  |                                       |  |   |                      | Out of range        |
| SCHLAGEL 2 - EXTRACTION WELL - NO SURVEYS    |  |                                       |  |   |                      | Out of range        |
| SERAFINI E MAX GU 1 - KMG WELL - GYRO        |  |                                       |  |   |                      | Out of range        |
| SERAFINI-B 2 - KPK WELL - NO SURVEYS         |  |                                       |  |   |                      | Out of range        |
| SHAW 1 - KPK WELL - NO SURVEYS               |  |                                       |  |   |                      | Out of range        |
| SHAW 15-20 - KPK - SURVEYS                   |  |                                       |  |   |                      | Out of range        |
| SHAW 16-20 - KPK - SURVEYS                   |  |                                       |  |   |                      | Out of range        |
| STROMQUIST 1 - KPK WELL - NO SURVEYS         | 5,246.24                                 | 4,940.00                              | 2,183.12                                 | 2,158.52                                  | 88.713               | CC, ES              |
| STROMQUIST 1 - KPK WELL - NO SURVEYS         | 5,700.00                                 | 4,940.00                              | 2,229.78                                 | 2,203.40                                  | 84.513               | SF                  |
| STROMQUIST 11-21 - KMG WELL - GYRO           | 4,884.20                                 | 4,828.70                              | 680.49                                   | 659.59                                    | 32.563               | CC                  |
| STROMQUIST 11-21 - KMG WELL - GYRO           | 4,900.00                                 | 4,842.74                              | 680.51                                   | 659.53                                    | 32.426               | ES                  |
| STROMQUIST 11-21 - KMG WELL - GYRO           | 6,700.00                                 | 6,614.46                              | 764.00                                   | 732.84                                    | 24.516               | SF                  |
| STROMQUIST 13-21 - KMG WELL - GYRO           | 8,290.11                                 | 7,335.90                              | 384.21                                   | 346.86                                    | 10.289               | CC, ES              |
| STROMQUIST 13-21 - KMG WELL - GYRO           | 8,300.00                                 | 7,335.87                              | 384.33                                   | 346.88                                    | 10.261               | SF                  |
| STROMQUIST 22-21 - KMG WELL - SURVEYS        | 6,663.82                                 | 6,657.09                              | 752.61                                   | 715.08                                    | 20.054               | CC, ES              |
| STROMQUIST 22-21 - KMG WELL - SURVEYS        | 6,700.00                                 | 6,692.42                              | 753.57                                   | 715.81                                    | 19.956               | SF                  |
| STROMQUIST 23-21 - KMG WELL - SURVEYS        | 732.66                                   | 726.37                                | 402.58                                   | 399.88                                    | 149.127              | CC, ES              |
| STROMQUIST 23-21 - KMG WELL - SURVEYS        | 7,700.00                                 | 7,337.79                              | 1,125.54                                 | 1,090.33                                  | 31.972               | SF                  |
| STROMQUIST 34-21 - KMG WELL - SURVEYS        | 100.00                                   | 88.77                                 | 1,108.59                                 | 1,108.36                                  | 4,747.482            | CC                  |
| STROMQUIST 34-21 - KMG WELL - SURVEYS        | 300.00                                   | 285.50                                | 1,109.11                                 | 1,108.08                                  | 1,080.357            | ES                  |
| STROMQUIST 34-21 - KMG WELL - SURVEYS        | 9,200.00                                 | 7,424.81                              | 1,259.47                                 | 1,204.87                                  | 23.068               | SF                  |
| STROMQUIST 35-21 - KMG WELL - SURVEYS        | 8,773.20                                 | 7,392.15                              | 101.76                                   | 53.31                                     | 2.101                | CC, ES, SF          |
| TRAVELERS 28-11M - KMG WELL - GYRO           | 12,573.27                                | 7,348.18                              | 95.65                                    | -1.27                                     | 0.987                | Level 1, CC, ES, SF |
| TRAVELERS U 28-13DI - KMG WELL - GYRO        | 13,473.44                                | 7,380.30                              | 661.59                                   | 550.89                                    | 5.976                | CC                  |
| TRAVELERS U 28-13DI - KMG WELL - GYRO        | 13,500.00                                | 7,381.29                              | 662.12                                   | 550.87                                    | 5.952                | ES, SF              |
| UPRC 33-1M - KMG WELL - GYRO                 |  |                                       |  |   |                      | Out of range        |
| UPRR 43 PAN AM-B 7 - KPK WELL - NO SURVEYS   |  |                                       |  |   |                      | Out of range        |
| WESTERN 3-21A - KMG WELL - GYRO              |  |                                       |  |   |                      | Out of range        |
| WILDFLOWER 12-27 - KMG WELL - SURVEYS        |  |                                       |  |   |                      | Out of range        |
| WILDFLOWER 33-27 - KMG WELL - SURVEYS        |  |                                       |  |   |                      | Out of range        |
| WOOLEY UNIT 1 - KPK WELL - NO SURVEYS        |  |                                       |  |   |                      | Out of range        |



# Cathedral Energy Services

## Anticollision Summary Report

|                           |                                |                                     |   |
|---------------------------|--------------------------------|-------------------------------------|---|
| <b>Company:</b>           | Crestone Peak Resources        | <b>Local Co-ordinate Reference:</b> | Well DREAM WEAVER South 3E-21H-N268 - Slot DREAM WEAVER South 3E-21H-N268 SHL |
| <b>Project:</b>           | DJ BASIN                       | <b>TVD Reference:</b>               | 23' KB @ 4924.00usft (Original Well Elev)                                     |
| <b>Reference Site:</b>    | S21-T2N-R68W                   | <b>MD Reference:</b>                | 23' KB @ 4924.00usft (Original Well Elev)                                     |
| <b>Site Error:</b>        | 0.00 usft                      | <b>North Reference:</b>             | True  |
| <b>Reference Well:</b>    | DREAM WEAVER South 3E-21H-N268 | <b>Survey Calculation Method:</b>   | Minimum Curvature   |
| <b>Well Error:</b>        | 0.00 usft                      | <b>Output errors are at</b>         | 2.00 sigma  |
| <b>Reference Wellbore</b> | OH                             | <b>Database:</b>                    | USA EDM 5000 Multi Users DB   |
| <b>Reference Design:</b>  | PLAN #1                        | <b>Offset TVD Reference:</b>        | Offset Datum  |

| Summary                                    |                                 |                              |                                 |                                  |                   |              |
|--|---------------------------------|------------------------------|---------------------------------|----------------------------------|-------------------|--------------|
| Site Name                                  | Reference Measured Depth (usft) | Offset Measured Depth (usft) | Distance Between Centres (usft) | Distance Between Ellipses (usft) | Separation Factor | Warning      |
| <b>Offset Well - Wellbore - Design</b>     |                                 |                              |                                 |                                  |                   |              |
| S32-T2N-R68W                               |                                 |                              |                                 |                                  |                   |              |
| Anderson 22-32 - KPK WELL - NO SURVEYS     |                                 |                              |                                 |                                  |                   | Out of range |
| Anderson 32-32 - CPR WELL - SURVEYS        |                                 |                              |                                 |                                  |                   | Out of range |
| Anderson 41-32 - CPR - GYRO                | 14,641.01                       | 7,244.65                     | 1,795.49                        | 1,666.66                         | 13.937            | CC           |
| Anderson 41-32 - CPR - GYRO                | 14,700.00                       | 7,244.27                     | 1,796.46                        | 1,666.58                         | 13.832            | ES           |
| Anderson 41-32 - CPR - GYRO                | 14,900.00                       | 7,243.02                     | 1,814.08                        | 1,681.58                         | 13.691            | SF           |
| Anderson 4-2-32 - CPR WELL - SURVEYS       |                                 |                              |                                 |                                  |                   | Out of range |
| Anderson 6-4-32 - CPR WELL - SURVEYS       |                                 |                              |                                 |                                  |                   | Out of range |
| Anderson Trust 1 - KPK - NO SURVEYS        |                                 |                              |                                 |                                  |                   | Out of range |
| Anderson Trust 1 A - CPR WELL - GYRO       |                                 |                              |                                 |                                  |                   | Out of range |
| Anderson Trust 2-A - CPR WELL - NO SURVEYS |                                 |                              |                                 |                                  |                   | Out of range |
| Anderson Trust 32-2 - CPR WELL - GYRO      |                                 |                              |                                 |                                  |                   | Out of range |
| Anderson Trust 32-8 - CPR WELL - GYRO      | 16,186.11                       | 7,300.39                     | 2,152.86                        | 1,999.49                         | 14.037            | CC           |
| Anderson Trust 32-8 - CPR WELL - GYRO      | 16,200.00                       | 7,300.40                     | 2,152.91                        | 1,999.29                         | 14.014            | ES           |
| Anderson Trust 32-8 - CPR WELL - GYRO      | 16,500.00                       | 7,300.74                     | 2,175.62                        | 2,017.98                         | 13.801            | SF           |
| Anderson Trust C 1 - CPR WELL - SURVEYS    |                                 |                              |                                 |                                  |                   | Out of range |
| Anderson Trust C Unit 2 - CPR WELL - GYRO  |                                 |                              |                                 |                                  |                   | Out of range |
| Brown 22-5 - CPR WELL - GYRO               |                                 |                              |                                 |                                  |                   | Out of range |
| Brown 31-5 - CPR WELL - SURVEYS            |                                 |                              |                                 |                                  |                   | Out of range |
| Brown 41-5 - CPR WELL - SURVEYS            |                                 |                              |                                 |                                  |                   | Out of range |
| Brown 5-3 - CPR WELL - GYRO                |                                 |                              |                                 |                                  |                   | Out of range |
| Brown 5-5 - CPR WELL - GYRO                |                                 |                              |                                 |                                  |                   | Out of range |
| Brown C Unit 1 - CPR WELL - GYRO           |                                 |                              |                                 |                                  |                   | Out of range |
| Brown C Unit 2 - CPR WELL - GYRO           |                                 |                              |                                 |                                  |                   | Out of range |
| Bryant 10-30 - KMG WELL - SURVEYS          |                                 |                              |                                 |                                  |                   | Out of range |
| Bryant 16-30 - KMG WELL - SURVEYS          |                                 |                              |                                 |                                  |                   | Out of range |
| Bryant 20-30 - KMG WELL - SURVEYS          |                                 |                              |                                 |                                  |                   | Out of range |
| Bryant 23-30 - KMG WELL - SURVEYS          |                                 |                              |                                 |                                  |                   | Out of range |
| Bryant 24-30 - KMG WELL - SURVEYS          |                                 |                              |                                 |                                  |                   | Out of range |
| Bryant 33-29 - KMG WELL - SURVEYS          |                                 |                              |                                 |                                  |                   | Out of range |
| Bryant 36-30 - KMG WELL - SURVEYS          |                                 |                              |                                 |                                  |                   | Out of range |
| Bryant 8-30 - KMG WELL - SURVEYS           |                                 |                              |                                 |                                  |                   | Out of range |
| Bryant Federal 37-30 - KMG WELL - SURVEYS  |                                 |                              |                                 |                                  |                   | Out of range |
| Bulthaup 1-6 - KMG WELL - GYRO             |                                 |                              |                                 |                                  |                   | Out of range |
| Bulthaup 16-6 - KMG WELL - SURVEYS         |                                 |                              |                                 |                                  |                   | Out of range |
| Bulthaup 17-6 - KMG WELL - SURVEYS         |                                 |                              |                                 |                                  |                   | Out of range |
| Bulthaup 24-6 - KMG WELL - SURVEYS         |                                 |                              |                                 |                                  |                   | Out of range |
| Bulthaup 27-6 - KMG WELL - SURVEYS         |                                 |                              |                                 |                                  |                   | Out of range |
| Bulthaup 39-6 - KMG WELL - SURVEYS         |                                 |                              |                                 |                                  |                   | Out of range |
| Bulthaup 40-6 - KMG WELL - SURVEYS         |                                 |                              |                                 |                                  |                   | Out of range |
| Bulthaup 8-6 - KMG WELL - GYRO             |                                 |                              |                                 |                                  |                   | Out of range |
| Bulthaup 9-6 - KMG WELL - SURVEYS          |                                 |                              |                                 |                                  |                   | Out of range |
| Canino 1-X - HUGHES CW - NO SURVEYS        |                                 |                              |                                 |                                  |                   | Out of range |
| Champlin 86 Amoco F 6 - KPK - NO SURVEYS   |                                 |                              |                                 |                                  |                   | Out of range |
| Champlin 86 N 1 - KMG WELL - GYRO          |                                 |                              |                                 |                                  |                   | Out of range |
| Champlin Amoco 86 F 7 - KPK WELL - SURVEYS |                                 |                              |                                 |                                  |                   | Out of range |
| Cinque 1 - FOUNDATION WELL - NO SURVEYS    |                                 |                              |                                 |                                  |                   | Out of range |
| Cinque 2 - FOUNDATION WELL - NO SURVEYS    |                                 |                              |                                 |                                  |                   | Out of range |
| Cinque 4 - FOUNDATION WELL - NO SURVEYS    |                                 |                              |                                 |                                  |                   | Out of range |
| FILE 3A-32H-K268 - OH - FINAL              |                                 |                              |                                 |                                  |                   | Out of range |
| FILE 3B-32H-K268 - OH - FINAL              |                                 |                              |                                 |                                  |                   | Out of range |
| FILE 3C-32H-K268 - OH - FINAL              |                                 |                              |                                 |                                  |                   | Out of range |

CC - Min centre to center distance or convergent point, SF - min separation factor, ES - min ellipse separation

# Cathedral Energy Services

## Anticollision Summary Report

|                           |                                |                                     |   |
|---------------------------|--------------------------------|-------------------------------------|---|
| <b>Company:</b>           | Crestone Peak Resources        | <b>Local Co-ordinate Reference:</b> | Well DREAM WEAVER South 3E-21H-N268 - Slot DREAM WEAVER South 3E-21H-N268 SHL |
| <b>Project:</b>           | DJ BASIN                       | <b>TVD Reference:</b>               | 23' KB @ 4924.00usft (Original Well Elev)                                     |
| <b>Reference Site:</b>    | S21-T2N-R68W                   | <b>MD Reference:</b>                | 23' KB @ 4924.00usft (Original Well Elev)                                     |
| <b>Site Error:</b>        | 0.00 usft                      | <b>North Reference:</b>             | True  |
| <b>Reference Well:</b>    | DREAM WEAVER South 3E-21H-N268 | <b>Survey Calculation Method:</b>   | Minimum Curvature   |
| <b>Well Error:</b>        | 0.00 usft                      | <b>Output errors are at</b>         | 2.00 sigma  |
| <b>Reference Wellbore</b> | OH                             | <b>Database:</b>                    | USA EDM 5000 Multi Users DB   |
| <b>Reference Design:</b>  | PLAN #1                        | <b>Offset TVD Reference:</b>        | Offset Datum  |

| Summary                                |                                 |                              |                                 |                                  |                   |              |
|--|---------------------------------|------------------------------|---------------------------------|----------------------------------|-------------------|--------------|
| Site Name                              | Reference Measured Depth (usft) | Offset Measured Depth (usft) | Distance Between Centres (usft) | Distance Between Ellipses (usft) | Separation Factor | Warning      |
| <b>Offset Well - Wellbore - Design</b> |                                 |                              |                                 |                                  |                   |              |
| S32-T2N-R68W                           |                                 |                              |                                 |                                  |                   |              |
| FILE 3D-32H-K268 - OH - FINAL          |                                 |                              |                                 |                                  |                   | Out of range |
| FILE 3E-32H-K268 - OH - FINAL          |                                 |                              |                                 |                                  |                   | Out of range |
| FILE 3F-32H-K268 - OH - FINAL          |                                 |                              |                                 |                                  |                   | Out of range |
| FILE 3G-32H-K268 - OH - FINAL          |                                 |                              |                                 |                                  |                   | Out of range |
| FILE 3H-32H-K268 - OH - FINAL          |                                 |                              |                                 |                                  |                   | Out of range |
| FILE 3Q-32H-K268 - OH - FINAL          |                                 |                              |                                 |                                  |                   | Out of range |
| FILE 3R-32H-K268 - OH - FINAL          |                                 |                              |                                 |                                  |                   | Out of range |
| FILE 3S-32H-K268 - OH - FINAL          |                                 |                              |                                 |                                  |                   | Out of range |
| FILE 3T-32H-K268 - OH - FINAL          |                                 |                              |                                 |                                  |                   | Out of range |
| FILE FED 3I-32H-K268 - OH - FINAL      |                                 |                              |                                 |                                  |                   | Out of range |
| FILE FED 3J-32H-K268 - OH - FINAL      |                                 |                              |                                 |                                  |                   | Out of range |
| FILE FED 3K-32H-K268 - OH - FINAL      |                                 |                              |                                 |                                  |                   | Out of range |
| FILE FED 3K-32H-K268 - OH - PLAN #4    |                                 |                              |                                 |                                  |                   | Out of range |
| FILE FED 3L-32H-K268 - OH - FINAL      |                                 |                              |                                 |                                  |                   | Out of range |
| FILE FED 3M-32H-K268 - OH - FINAL      |                                 |                              |                                 |                                  |                   | Out of range |
| FILE FED 3N-32H-K268 - OH - FINAL      |                                 |                              |                                 |                                  |                   | Out of range |
| FILE FED 3O-32H-K268 - OH - FINAL      |                                 |                              |                                 |                                  |                   | Out of range |
| FILE FED 3P-32H-K268 - OH - FINAL      |                                 |                              |                                 |                                  |                   | Out of range |
| Foster 33-5 - CPR WELL - SURVEYS       |                                 |                              |                                 |                                  |                   | Out of range |
| Foster 43-5 - CPR WELL - SURVEYS       |                                 |                              |                                 |                                  |                   | Out of range |
| Foster 4-5 - CPR WELL - SURVEYS        |                                 |                              |                                 |                                  |                   | Out of range |
| Foster 4-6-5 - CPR WELL - SURVEYS      |                                 |                              |                                 |                                  |                   | Out of range |
| Foster 6-4-5 - CPR - SURVEYS           |                                 |                              |                                 |                                  |                   | Out of range |
| Foster 6-4-5X - CPR WELL - SURVEYS     |                                 |                              |                                 |                                  |                   | Out of range |
| Foster 6-8-5 - CPR WELL - SURVEYS      |                                 |                              |                                 |                                  |                   | Out of range |
| Foster 8-8-5 - CPR WELL - SURVEYS      |                                 |                              |                                 |                                  |                   | Out of range |
| Foster E Unit 1 - CPR - GYRO           |                                 |                              |                                 |                                  |                   | Out of range |
| Gene 11-5 - KERR-MCGEE - GYRO          |                                 |                              |                                 |                                  |                   | Out of range |
| Hankins 1 - KPK WELL - NO SURVEYS      |                                 |                              |                                 |                                  |                   | Out of range |
| Hauck 17-29 - KMG WELL - SURVEYS       |                                 |                              |                                 |                                  |                   | Out of range |
| Hauck 24-29 - KMG WELL - SURVEYS       |                                 |                              |                                 |                                  |                   | Out of range |
| Hauck 7-29 - KMG WELL - SURVEYS        |                                 |                              |                                 |                                  |                   | Out of range |
| HSR-Bryant 9-30A - KMG WELL - GYRO     |                                 |                              |                                 |                                  |                   | Out of range |
| HSR-Williams 10-20 - KMG WELL - GYRO   |                                 |                              |                                 |                                  |                   | Out of range |
| HWY52 4A-32H-O268 - OH - FINAL         |                                 |                              |                                 |                                  |                   | Out of range |
| HWY52 4B-32H-O268 - OH - FINAL         |                                 |                              |                                 |                                  |                   | Out of range |
| HWY52 4C-32H-O268 - OH - FINAL         |                                 |                              |                                 |                                  |                   | Out of range |
| HWY52 4D-32H-O268 - OH - FINAL         |                                 |                              |                                 |                                  |                   | Out of range |
| HWY52 4E-32H-O268 - OH - FINAL         |                                 |                              |                                 |                                  |                   | Out of range |
| HWY52 4F-32H-O268 - OH - FINAL         |                                 |                              |                                 |                                  |                   | Out of range |
| HWY52 4G-32H-O268 - OH - FINAL         | 19,013.28                       | 8,388.81                     | 2,216.41                        | 2,007.43                         | 10.606            | CC, ES, SF   |
| HWY52 4H-32H-O268 - OH - FINAL         | 19,013.28                       | 8,132.17                     | 1,895.12                        | 1,685.45                         | 9.039             | CC, ES, SF   |
| HWY52 4I-32H-O268 - OH - FINAL         | 18,634.40                       | 7,801.59                     | 1,758.29                        | 1,555.60                         | 8.675             | CC           |
| HWY52 4I-32H-O268 - OH - FINAL         | 18,800.00                       | 7,958.92                     | 1,758.75                        | 1,553.03                         | 8.549             | ES           |
| HWY52 4I-32H-O268 - OH - FINAL         | 19,013.28                       | 8,070.11                     | 1,768.95                        | 1,559.73                         | 8.455             | SF           |
| HWY52 4J-32H-O268 - OH - FINAL         | 18,813.07                       | 8,175.44                     | 1,447.61                        | 1,242.09                         | 7.044             | CC, ES       |
| HWY52 4J-32H-O268 - OH - FINAL         | 19,013.28                       | 8,360.99                     | 1,452.90                        | 1,244.13                         | 6.959             | SF           |
| HWY52 4K-32H-O268 - OH - FINAL         | 18,984.18                       | 8,185.89                     | 1,283.17                        | 1,072.73                         | 6.098             | CC           |
| HWY52 4K-32H-O268 - OH - FINAL         | 19,013.28                       | 8,201.24                     | 1,283.38                        | 1,072.38                         | 6.082             | ES, SF       |
| HWY52 4L-32H-O268 - OH - FINAL         |                                 |                              |                                 |                                  |                   | Out of range |
| HWY52 4M-32H-O268 - OH - FINAL         |                                 |                              |                                 |                                  |                   | Out of range |

CC - Min centre to center distance or convergent point, SF - min separation factor, ES - min ellipse separation

# Cathedral Energy Services

## Anticollision Summary Report

|                           |                                |                                     |   |
|---------------------------|--------------------------------|-------------------------------------|---|
| <b>Company:</b>           | Crestone Peak Resources        | <b>Local Co-ordinate Reference:</b> | Well DREAM WEAVER South 3E-21H-N268 - Slot DREAM WEAVER South 3E-21H-N268 SHL |
| <b>Project:</b>           | DJ BASIN                       | <b>TVD Reference:</b>               | 23' KB @ 4924.00usft (Original Well Elev)                                     |
| <b>Reference Site:</b>    | S21-T2N-R68W                   | <b>MD Reference:</b>                | 23' KB @ 4924.00usft (Original Well Elev)                                     |
| <b>Site Error:</b>        | 0.00 usft                      | <b>North Reference:</b>             | True  |
| <b>Reference Well:</b>    | DREAM WEAVER South 3E-21H-N268 | <b>Survey Calculation Method:</b>   | Minimum Curvature   |
| <b>Well Error:</b>        | 0.00 usft                      | <b>Output errors are at</b>         | 2.00 sigma  |
| <b>Reference Wellbore</b> | OH                             | <b>Database:</b>                    | USA EDM 5000 Multi Users DB   |
| <b>Reference Design:</b>  | PLAN #1                        | <b>Offset TVD Reference:</b>        | Offset Datum  |

| Summary   |  |                                       |  |   |                      |              |
|---|--|---------------------------------------|--|---|----------------------|--------------|
| Site Name<br>Offset Well - Wellbore - Design    | Reference<br>Measured<br>Depth<br>(usft) | Offset<br>Measured<br>Depth<br>(usft) | Distance<br>Between<br>Centres<br>(usft) | Distance<br>Between<br>Ellipses<br>(usft) | Separation<br>Factor | Warning      |
| S32-T2N-R68W                                    |  |                                       |  |   |                      |              |
| HWY52 4N-32H-O268 - OH - FINAL                  |  |                                       |  |   |                      | Out of range |
| HWY52 4O-32H-O268 - OH - FINAL                  |  |                                       |  |   |                      | Out of range |
| HWY52 4P-32H-O268 - OH - FINAL                  |  |                                       |  |   |                      | Out of range |
| HWY52 4Q-32H-O268 - OH - FINAL                  |  |                                       |  |   |                      | Out of range |
| HWY52 4R-32H-O268 - OH - FINAL                  |  |                                       |  |   |                      | Out of range |
| HWY52 4S-32H-O268 - OH - FINAL                  | 16,004.29                                | 10,781.00                             | 2,071.67                                 | 1,881.18                                  | 10.875               | CC           |
| HWY52 4S-32H-O268 - OH - FINAL                  | 16,600.00                                | 16,600.00                             | 2,097.29                                 | 1,818.93                                  | 7.534                | ES, SF       |
| HWY52 4T-32H-O268 - OH - FINAL                  | 17,754.36                                | 8,841.65                              | 1,997.54                                 | 1,801.27                                  | 10.178               | CC           |
| HWY52 4T-32H-O268 - OH - FINAL                  | 17,800.00                                | 8,813.97                              | 1,997.71                                 | 1,800.94                                  | 10.153               | ES           |
| HWY52 4T-32H-O268 - OH - FINAL                  | 19,013.28                                | 7,765.75                              | 2,033.65                                 | 1,825.91                                  | 9.789                | SF           |
| HWY52 4U-32H-O268 - OH - FINAL                  | 18,402.02                                | 8,191.40                              | 1,649.42                                 | 1,449.04                                  | 8.232                | CC           |
| HWY52 4U-32H-O268 - OH - FINAL                  | 18,900.00                                | 18,900.00                             | 1,672.36                                 | 1,356.12                                  | 5.288                | ES, SF       |
| HWY52 4V-32H-O268 - OH - FINAL                  | 14,613.74                                | 12,092.00                             | 1,526.87                                 | 1,336.50                                  | 8.020                | CC, ES       |
| HWY52 4V-32H-O268 - OH - FINAL                  | 19,000.00                                | 7,831.00                              | 1,583.94                                 | 1,375.61                                  | 7.603                | SF           |
| HWY52 4W-32H-O268 - OH - FINAL                  | 17,000.00                                | 17,000.00                             | 1,279.66                                 | 1,000.80                                  | 4.589                | ES, SF       |
| HWY52 4W-32H-O268 - OH - FINAL                  | 18,325.72                                | 8,373.10                              | 1,210.08                                 | 1,011.16                                  | 6.083                | CC           |
| Jack Hein Unit 1 - HS RESOURCES WELL - NO SURVE |  |                                       |  |   |                      | Out of range |
| John Lamar 1 - KPK WELL - NO SURVEYS            |  |                                       |  |   |                      | Out of range |
| Johnson 32-30 - KPK WELL - NO SURVEYS           |  |                                       |  |   |                      | Out of range |
| Johnson 7-30A - KMG WELL - GYRO                 |  |                                       |  |   |                      | Out of range |
| Kenneth Koch 1 - KPK WELL - NO SURVEYS          |  |                                       |  |   |                      | Out of range |
| Kenyon 34-19 - CPR WELL - SURVEYS               |  |                                       |  |   |                      | Out of range |
| Kenyon 4-8-19 - CPR WELL - SURVEYS              |  |                                       |  |   |                      | Out of range |
| Kenyon 8-4-19 - CPR WELL - SURVEYS              |  |                                       |  |   |                      | Out of range |
| Kenyon 8-6-19 - CPR WELL - SURVEYS              |  |                                       |  |   |                      | Out of range |
| Kenyon 8-8-19 - CPR WELL - SURVEYS              |  |                                       |  |   |                      | Out of range |
| Koch 41-6 - KPK WELL - NO SURVEYS               |  |                                       |  |   |                      | Out of range |
| Koch Kenneth E A-1 - KMG WELL - SURVEY          |  |                                       |  |   |                      | Out of range |
| Milton H Nelson H-1 - KMG WELL - GYRO           |  |                                       |  |   |                      | Out of range |
| Milton H Nelson I1 - KMG WELL - GYRO            |  |                                       |  |   |                      | Out of range |
| Milton H Nelson L1 - KMG WELL - GYRO            |  |                                       |  |   |                      | Out of range |
| Milton Nelson K1 - KMG WELL - GYRO              |  |                                       |  |   |                      | Out of range |
| Nelson 1 - TEXAS TEA - NO SURVEYS               |  |                                       |  |   |                      | Out of range |
| Nelson 1-A - TEXAS TEA WELL - NO SURVEYS        |  |                                       |  |   |                      | Out of range |
| Nelson 2 - TEXAS TEA WELL - NO SURVEYS          |  |                                       |  |   |                      | Out of range |
| Nelson 3 - TEXAS TEA WELL - NO SURVEYS          |  |                                       |  |   |                      | Out of range |
| Nelson 4 - TEXAS TEA WELL - NO SURVEYS          |  |                                       |  |   |                      | Out of range |
| Nelson 5 - TEXAS TEA WELL - NO SURVEYS          |  |                                       |  |   |                      | Out of range |
| Nelson D2 - KPK WELL - NO SURVEYS               |  |                                       |  |   |                      | Out of range |
| Nelson E Unit 1 - CPR WELL - GYRO               |  |                                       |  |   |                      | Out of range |
| Nelson E Unit 2 - CPR WELL - GYRO               |  |                                       |  |   |                      | Out of range |
| NOAA Federal 11-32 - CPR WELL - GYRO            |  |                                       |  |   |                      | Out of range |
| Osarkson 2-8-33 - CPR WELL - SURVEYS            | 19,013.28                                | 7,508.53                              | 425.89                                   | 318.77                                    | 3.976                | CC, ES, SF   |
| Oskarson 13-33 - CPR - GYRO                     | 17,563.23                                | 7,361.01                              | 846.70                                   | 671.49                                    | 4.832                | CC, ES       |
| Oskarson 13-33 - CPR - GYRO                     | 17,600.00                                | 7,361.10                              | 847.50                                   | 671.61                                    | 4.818                | SF           |
| Oskarson 23-33 - CPR WELL - GYRO                | 17,268.30                                | 7,435.11                              | 701.02                                   | 535.36                                    | 4.232                | CC, ES, SF   |
| Oskarson 4 - HRM - NO SURVEYS                   |  |                                       |  |   |                      | Out of range |
| Oskarson 4-4-33 - CPR WELL - SURVEYS            | 16,800.00                                | 7,879.38                              | 1,337.00                                 | 1,152.30                                  | 7.239                | SF           |
| Oskarson 4-4-33 - CPR WELL - SURVEYS            | 16,879.50                                | 7,878.32                              | 1,334.64                                 | 1,150.28                                  | 7.240                | CC, ES       |
| Oskarson 4-6-33 - CPR WELL - SURVEYS            | 18,113.14                                | 7,642.91                              | 1,336.42                                 | 1,150.13                                  | 7.174                | CC, ES, SF   |
| Oskarson 4-8-33 - CPR WELL - SURVEYS            | 19,013.28                                | 7,692.72                              | 1,364.09                                 | 1,171.25                                  | 7.074                | CC, ES, SF   |

CC - Min centre to center distance or convergent point, SF - min separation factor, ES - min ellipse separation

# Cathedral Energy Services

## Anticollision Summary Report

|                           |                                |                                     |   |
|---------------------------|--------------------------------|-------------------------------------|---|
| <b>Company:</b>           | Crestone Peak Resources        | <b>Local Co-ordinate Reference:</b> | Well DREAM WEAVER South 3E-21H-N268 - Slot DREAM WEAVER South 3E-21H-N268 SHL |
| <b>Project:</b>           | DJ BASIN                       | <b>TVD Reference:</b>               | 23' KB @ 4924.00usft (Original Well Elev)                                     |
| <b>Reference Site:</b>    | S21-T2N-R68W                   | <b>MD Reference:</b>                | 23' KB @ 4924.00usft (Original Well Elev)                                     |
| <b>Site Error:</b>        | 0.00 usft                      | <b>North Reference:</b>             | True  |
| <b>Reference Well:</b>    | DREAM WEAVER South 3E-21H-N268 | <b>Survey Calculation Method:</b>   | Minimum Curvature   |
| <b>Well Error:</b>        | 0.00 usft                      | <b>Output errors are at</b>         | 2.00 sigma  |
| <b>Reference Wellbore</b> | OH                             | <b>Database:</b>                    | USA EDM 5000 Multi Users DB   |
| <b>Reference Design:</b>  | PLAN #1                        | <b>Offset TVD Reference:</b>        | Offset Datum  |

| Summary                                      |  |                                       |  |   |                      |              |
|--|--|---------------------------------------|--|---|----------------------|--------------|
| Site Name<br>Offset Well - Wellbore - Design | Reference<br>Measured<br>Depth<br>(usft) | Offset<br>Measured<br>Depth<br>(usft) | Distance<br>Between<br>Centres<br>(usft) | Distance<br>Between<br>Ellipses<br>(usft) | Separation<br>Factor | Warning      |
| S32-T2N-R68W                                 |  |                                       |  |   |                      |              |
| Oskarson E Unit 1 - CPR WELL - GYRO          | 18,544.48                                | 7,370.72                              | 364.42                                   | 178.03                                    | 1.955                | CC, ES, SF   |
| Paquette 13-5 - KMG WELL - GYRO              |  |                                       |  |   |                      | Out of range |
| Paquette 14-5 - KERR-MCGEE - GYRO            |  |                                       |  |   |                      | Out of range |
| Rasmussen 10-29 - KMG WELL - SURVEYS         |  |                                       |  |   |                      | Out of range |
| Rasmussen 14-29 - KMG WELL - SURVEYS         |  |                                       |  |   |                      | Out of range |
| Rasmussen 16-29 - KMG WELL - SURVEYS         | 13,359.87                                | 7,512.44                              | 1,937.58                                 | 1,813.93                                  | 15.671               | CC           |
| Rasmussen 16-29 - KMG WELL - SURVEYS         | 13,400.00                                | 7,513.99                              | 1,937.99                                 | 1,813.62                                  | 15.583               | ES           |
| Rasmussen 16-29 - KMG WELL - SURVEYS         | 13,700.00                                | 7,527.04                              | 1,967.16                                 | 1,838.50                                  | 15.290               | SF           |
| Rasmussen 19-29 - KMG WELL - SURVEYS         |  |                                       |  |   |                      | Out of range |
| Rasmussen 20-29 - KMG WELL - SURVEYS         |  |                                       |  |   |                      | Out of range |
| Rasmussen 22-29 - KMG WELL - SURVEYS         |  |                                       |  |   |                      | Out of range |
| Rasmussen 23-29 - KMG WELL - SURVEYS         |  |                                       |  |   |                      | Out of range |
| Rasmussen 25-29 - KMG WELL - SURVEYS         |  |                                       |  |   |                      | Out of range |
| Rasmussen 36-29 - KMG WELL - SURVEYS         |  |                                       |  |   |                      | Out of range |
| Rasmussen 37-29 - KMG WELL - SURVEYS         |  |                                       |  |   |                      | Out of range |
| Rasmussen 39-29 - KMG WELL - SURVEYS         | 12,837.71                                | 7,732.62                              | 1,297.69                                 | 1,179.58                                  | 10.987               | CC           |
| Rasmussen 39-29 - KMG WELL - SURVEYS         | 12,900.00                                | 7,732.74                              | 1,299.19                                 | 1,179.47                                  | 10.852               | ES           |
| Rasmussen 39-29 - KMG WELL - SURVEYS         | 13,100.00                                | 7,733.14                              | 1,323.93                                 | 1,200.08                                  | 10.689               | SF           |
| Rasmussen Fed 35-29 - KMG WELL - SURVEYS     |  |                                       |  |   |                      | Out of range |
| Ray Nelson 0-4-32 - CPR WELL - SURVEYS       |  |                                       |  |   |                      | Out of range |
| Ray Nelson 12-32 - CPR WELL - GYRO           |  |                                       |  |   |                      | Out of range |
| Ray Nelson 13-32 - CPR WELL - SURVEYS        |  |                                       |  |   |                      | Out of range |
| Ray Nelson 14-32 - CPR WELL - SURVEYS        |  |                                       |  |   |                      | Out of range |
| Ray Nelson 23-32 - CPR WELL - GYRO           |  |                                       |  |   |                      | Out of range |
| Ray Nelson 24-32 - CPR WELL - SURVEYS        |  |                                       |  |   |                      | Out of range |
| Ray Nelson 2-4-32 - CPR WELL - SURVEYS       |  |                                       |  |   |                      | Out of range |
| Ray Nelson 33-32 - CPR WELL - SURVEYS        |  |                                       |  |   |                      | Out of range |
| Ray Nelson 34-32 - CPR WELL - SURVEYS        |  |                                       |  |   |                      | Out of range |
| Ray Nelson 44-32 - CPR WELL - SURVEYS        | 18,631.57                                | 7,503.40                              | 1,849.52                                 | 1,657.34                                  | 9.624                | CC, ES       |
| Ray Nelson 44-32 - CPR WELL - SURVEYS        | 18,800.00                                | 7,500.64                              | 1,857.17                                 | 1,662.42                                  | 9.536                | SF           |
| Ray Nelson 4-4-32 - CPR WELL - SURVEYS       |  |                                       |  |   |                      | Out of range |
| Ray Nelson 4-6-32 - CPR WELL - SURVEYS       |  |                                       |  |   |                      | Out of range |
| Ray Nelson 8-8-32 - CPR WELL - SURVEYS       | 19,013.28                                | 7,674.29                              | 1,388.32                                 | 1,186.90                                  | 6.893                | CC, ES, SF   |
| Regnier Farms 32-19 - CPR WELL - GYRO        |  |                                       |  |   |                      | Out of range |
| Regnier Farms 33-19 - CPR WELL - GYRO        |  |                                       |  |   |                      | Out of range |
| Regnier Farms 42-19 - CPR WELL - GYRO        |  |                                       |  |   |                      | Out of range |
| Regnier Farms 43-19 - CPR WELL - SURVEYS     |  |                                       |  |   |                      | Out of range |
| Regnier Farms B 2 - CPR WELL - GYRO          |  |                                       |  |   |                      | Out of range |
| Regnier Farms B Unit 1 - CPR WELL - GYRO     |  |                                       |  |   |                      | Out of range |
| Sawdey Unit 2 - KMG WELL - GYRO              |  |                                       |  |   |                      | Out of range |
| Schriner 11-5 - KMG WELL - GYRO              |  |                                       |  |   |                      | Out of range |
| Schriner 12-5 - KMG WELL - GYRO              |  |                                       |  |   |                      | Out of range |
| SEC Four 12-4 - KMG WELL - SURVEYS           |  |                                       |  |   |                      | Out of range |
| SEC Four 13-4 - KMG WELL - SURVEYS           |  |                                       |  |   |                      | Out of range |
| SEC Four 14-4 - KMG WELL - SURVEYS           |  |                                       |  |   |                      | Out of range |
| SEC Four 21-4 - KMG WELL - SURVEYS           | 19,013.28                                | 7,550.37                              | 2,183.42                                 | 2,048.78                                  | 16.217               | CC, ES, SF   |
| SEC Four 22-4 - KMG WELL - SURVEYS           |  |                                       |  |   |                      | Out of range |
| SEC Four 31-4 - KMG WELL - SURVEYS           | 19,013.28                                | 7,538.04                              | 2,122.82                                 | 1,997.55                                  | 16.946               | CC, ES, SF   |
| SEC Four 32-4 - KMG WELL - SURVEYS           |  |                                       |  |   |                      | Out of range |
| SEC Four 33-4 - KMG WELL - SURVEYS           |  |                                       |  |   |                      | Out of range |
| SEC Four 3-4 - KMG WELL - SURVEYS            | 19,013.28                                | 7,549.29                              | 1,326.64                                 | 1,202.70                                  | 10.703               | CC, ES, SF   |

CC - Min centre to center distance or convergent point, SF - min separation factor, ES - min ellipse separation

# Cathedral Energy Services

## Anticollision Summary Report

|                           |                                |                                     |   |
|---------------------------|--------------------------------|-------------------------------------|---|
| <b>Company:</b>           | Crestone Peak Resources        | <b>Local Co-ordinate Reference:</b> | Well DREAM WEAVER South 3E-21H-N268 - Slot DREAM WEAVER South 3E-21H-N268 SHL |
| <b>Project:</b>           | DJ BASIN                       | <b>TVD Reference:</b>               | 23' KB @ 4924.00usft (Original Well Elev)                                     |
| <b>Reference Site:</b>    | S21-T2N-R68W                   | <b>MD Reference:</b>                | 23' KB @ 4924.00usft (Original Well Elev)                                     |
| <b>Site Error:</b>        | 0.00 usft                      | <b>North Reference:</b>             | True  |
| <b>Reference Well:</b>    | DREAM WEAVER South 3E-21H-N268 | <b>Survey Calculation Method:</b>   | Minimum Curvature   |
| <b>Well Error:</b>        | 0.00 usft                      | <b>Output errors are at</b>         | 2.00 sigma  |
| <b>Reference Wellbore</b> | OH                             | <b>Database:</b>                    | USA EDM 5000 Multi Users DB   |
| <b>Reference Design:</b>  | PLAN #1                        | <b>Offset TVD Reference:</b>        | Offset Datum  |

| Summary                                      |  |                                       |  |   |                      |              |
|--|--|---------------------------------------|--|---|----------------------|--------------|
| Site Name<br>Offset Well - Wellbore - Design | Reference<br>Measured<br>Depth<br>(usft) | Offset<br>Measured<br>Depth<br>(usft) | Distance<br>Between<br>Centres<br>(usft) | Distance<br>Between<br>Ellipses<br>(usft) | Separation<br>Factor | Warning      |
| S32-T2N-R68W                                 |  |                                       |  |   |                      |              |
| SEC Four 35-4 - KMG WELL - SURVEYS           |  |                                       |  |   |                      | Out of range |
| SEC Four 4-4 - KMG WELL - SURVEYS            | 19,013.28                                | 7,498.70                              | 1,314.43                                 | 1,217.81                                  | 13.605               | CC, ES, SF   |
| SEC Four 5-4 - KMG WELL - SURVEYS            |  |                                       |  |   |                      | Out of range |
| SEC Four 6-4 - KMG WELL - SURVEYS            |  |                                       |  |   |                      | Out of range |
| Shaw 11-29A - KMG WELL - SURVEYS             |  |                                       |  |   |                      | Out of range |
| Shaw 12-29A - KMG - GYRO                     |  |                                       |  |   |                      | Out of range |
| Shaw 15-20 - KPK - SURVEYS                   |  |                                       |  |   |                      | Out of range |
| Shaw 16-20 - KPK - SURVEYS                   |  |                                       |  |   |                      | Out of range |
| Tallgrass 1-8 - KMG - SURVEYS                |  |                                       |  |   |                      | Out of range |
| Tallgrass 2-8 - KMG - SURVEYS                |  |                                       |  |   |                      | Out of range |
| Tallgrass 3-8 - KMG - SURVEYS                |  |                                       |  |   |                      | Out of range |
| Tallgrass 4-8 - KMG - SURVEYS                |  |                                       |  |   |                      | Out of range |
| Tallgrass 5-8 - KMG - SURVEYS                |  |                                       |  |   |                      | Out of range |
| Tallgrass 6-8 - KMG WELL - SURVEYS           |  |                                       |  |   |                      | Out of range |
| Williams 10-20 - KMG WELL - SURVEYS          |  |                                       |  |   |                      | Out of range |
| Williams 11-20 - KMG WELL - SURVEYS          |  |                                       |  |   |                      | Out of range |
| Williams 13-20 - KMG WELL - SURVEYS          |  |                                       |  |   |                      | Out of range |
| Williams 14-20 - KMG WELL - SURVEYS          |  |                                       |  |   |                      | Out of range |
| Williams 16-20 - KMG WELL - SURVEYS          | 8,129.73                                 | 7,469.48                              | 1,904.41                                 | 1,858.94                                  | 41.883               | CC, ES       |
| Williams 16-20 - KMG WELL - SURVEYS          | 8,700.00                                 | 7,487.49                              | 1,987.88                                 | 1,939.46                                  | 41.053               | SF           |
| Williams 18-29 - KMG WELL - SURVEYS          |  |                                       |  |   |                      | Out of range |
| Williams 23-20 - KMG WELL - SURVEYS          |  |                                       |  |   |                      | Out of range |
| Williams 24-20 - KMG WELL - SURVEYS          |  |                                       |  |   |                      | Out of range |
| Williams 24-20X - KMG WELL - SURVEYS         |  |                                       |  |   |                      | Out of range |
| Williams 25-20 - KMG WELL - SURVEYS          |  |                                       |  |   |                      | Out of range |
| Williams 35-20 - KMG WELL - SURVEYS          |  |                                       |  |   |                      | Out of range |
| Williams 36-20 - KMG WELL - SURVEYS          |  |                                       |  |   |                      | Out of range |
| Williams 39-20 - KMG WELL - SURVEYS          | 7,576.84                                 | 7,491.52                              | 1,319.07                                 | 1,279.25                                  | 33.121               | CC, ES       |
| Williams 39-20 - KMG WELL - SURVEYS          | 8,200.00                                 | 7,519.20                              | 1,472.05                                 | 1,426.84                                  | 32.555               | SF           |
| Williams 4-29 - KMG WELL - SURVEYS           |  |                                       |  |   |                      | Out of range |
| Williams 7-20 - KMG WELL - SURVEYS           |  |                                       |  |   |                      | Out of range |
| Williams 8-20 - KMG WELL - SURVEYS           |  |                                       |  |   |                      | Out of range |
| Williams 9-20 - KMG WELL - SURVEYS           | 6,991.51                                 | 7,015.74                              | 1,956.71                                 | 1,916.54                                  | 48.710               | CC           |
| Williams 9-20 - KMG WELL - SURVEYS           | 7,000.00                                 | 7,022.10                              | 1,956.73                                 | 1,916.52                                  | 48.666               | ES           |
| Williams 9-20 - KMG WELL - SURVEYS           | 7,500.00                                 | 7,309.00                              | 2,027.77                                 | 1,985.05                                  | 47.466               | SF           |
| Woolley 41-7 - CPR WELL - GYRO               |  |                                       |  |   |                      | Out of range |
| Woolley 42-7 KPK - KPK WELL - SURVEYS        |  |                                       |  |   |                      | Out of range |

# Cathedral Energy Services

## Anticollision Summary Report

|                           |                                |                                     |   |
|---------------------------|--------------------------------|-------------------------------------|---|
| <b>Company:</b>           | Crestone Peak Resources        | <b>Local Co-ordinate Reference:</b> | Well DREAM WEAVER South 3E-21H-N268 - Slot DREAM WEAVER South 3E-21H-N268 SHL |
| <b>Project:</b>           | DJ BASIN                       | <b>TVD Reference:</b>               | 23' KB @ 4924.00usft (Original Well Elev)                                     |
| <b>Reference Site:</b>    | S21-T2N-R68W                   | <b>MD Reference:</b>                | 23' KB @ 4924.00usft (Original Well Elev)                                     |
| <b>Site Error:</b>        | 0.00 usft                      | <b>North Reference:</b>             | True  |
| <b>Reference Well:</b>    | DREAM WEAVER South 3E-21H-N268 | <b>Survey Calculation Method:</b>   | Minimum Curvature   |
| <b>Well Error:</b>        | 0.00 usft                      | <b>Output errors are at</b>         | 2.00 sigma  |
| <b>Reference Wellbore</b> | OH                             | <b>Database:</b>                    | USA EDM 5000 Multi Users DB   |
| <b>Reference Design:</b>  | PLAN #1                        | <b>Offset TVD Reference:</b>        | Offset Datum  |

| Summary  |                                 |                              |                                 |                                  |                   |              |
|--|---------------------------------|------------------------------|---------------------------------|----------------------------------|-------------------|--------------|
| Site Name  | Reference Measured Depth (usft) | Offset Measured Depth (usft) | Distance Between Centres (usft) | Distance Between Ellipses (usft) | Separation Factor | Warning      |
| Offset Well - Wellbore - Design                  |                                 |                              |                                 |                                  |                   |              |
| S7-T1N-R68W (Woolley-S/B/Morgan Hills)           |                                 |                              |                                 |                                  |                   |              |
| BAILEY 8-8-1 (EXISTING) - CPR WELL - SURVEYS     |                                 |                              |                                 |                                  |                   | Out of range |
| BEARDEN 0-6-6 (EXISTING) - CPR WELL - SURVEYS    |                                 |                              |                                 |                                  |                   | Out of range |
| BEARDEN 1 (EXISTING) - CPR WELL - GYRO           |                                 |                              |                                 |                                  |                   | Out of range |
| BEARDEN 13-6 (EXISTING) - CPR WELL - SURVEYS     |                                 |                              |                                 |                                  |                   | Out of range |
| BEARDEN 14-6 (EXISTING) - CPR WELL - SURVEYS     |                                 |                              |                                 |                                  |                   | Out of range |
| BEARDEN 23-6 (EXISTING) - ENCANA WELL - GYRO     |                                 |                              |                                 |                                  |                   | Out of range |
| BEARDEN 24-6 (EXISTING) - CPR WELL - CPR WELL    |                                 |                              |                                 |                                  |                   | Out of range |
| BEARDEN 2-4-6 (EXISTING) - CPR WELL - SURVEYS    |                                 |                              |                                 |                                  |                   | Out of range |
| BEARDEN 2-8-6 (EXISTING) - CPR WELL - SURVEYS    |                                 |                              |                                 |                                  |                   | Out of range |
| BECKY 1 (EXISTING) - FOUNDATION WELL - NO SUR    |                                 |                              |                                 |                                  |                   | Out of range |
| BECKY 2-6 (EXISTING) - EXTRACTION WELL - GYRO    |                                 |                              |                                 |                                  |                   | Out of range |
| BECKY 5-6 (EXISTING) - FOUNDATION WELL - NO SU   |                                 |                              |                                 |                                  |                   | Out of range |
| BECKY 7-6 (EXISTING) - EXTRACTION WELL - GYRO    |                                 |                              |                                 |                                  |                   | Out of range |
| BILLINGS 21-7 (EXISTING) - KPK WELL - SURVEYS    |                                 |                              |                                 |                                  |                   | Out of range |
| BULTHAUP 10-6 (EXISTING) - KMG WELL - SURVEYS    |                                 |                              |                                 |                                  |                   | Out of range |
| BULTHAUP 15-6 (EXISTING) - KMG WELL - GYRO       |                                 |                              |                                 |                                  |                   | Out of range |
| BULTHAUP 17-6 (EXISTING) - KMG WELL - SURVEYS    |                                 |                              |                                 |                                  |                   | Out of range |
| BULTHAUP 21-6 (EXISTING) - KMG WELL - SURVEYS    |                                 |                              |                                 |                                  |                   | Out of range |
| BULTHAUP 23-6 (EXISTING) - KMG WELL - SURVEYS    |                                 |                              |                                 |                                  |                   | Out of range |
| BULTHAUP 27-6 (EXISTING) - KMG WELL - SURVEYS    |                                 |                              |                                 |                                  |                   | Out of range |
| CANYON CREEK 43-13 (EXISTING) - CPR WELL - SUR   |                                 |                              |                                 |                                  |                   | Out of range |
| CANYON CREEK 8-6-13X (EXISTING) - CPR WELL - S   |                                 |                              |                                 |                                  |                   | Out of range |
| CHAMPLIN-86-AMOCO 1 (EXISTING) - AMOCO - SURV    |                                 |                              |                                 |                                  |                   | Out of range |
| COAL CREEK 6-0-19 (EXISTING) - CPR WELL - STK    |                                 |                              |                                 |                                  |                   | Out of range |
| COAL CREEK 6-0-19 (EXISTING) - OH - SURVEYS      |                                 |                              |                                 |                                  |                   | Out of range |
| COMMONS 28-19 (EXISTING) - KMG WELL - SURVEYS    |                                 |                              |                                 |                                  |                   | Out of range |
| ERIE CHAMPLIN 18-9 (EXISTING) - EXISTING - SURVE |                                 |                              |                                 |                                  |                   | Out of range |
| ERIE CHAMPLIN B UNIT 1 - CPR WELL - GYRO         |                                 |                              |                                 |                                  |                   | Out of range |
| ERIE CHAMPLIN B UNIT 2 - CPR WELL - GYRO         |                                 |                              |                                 |                                  |                   | Out of range |
| I & J 7-6 (EXISTING) - KMG WELL - GYRO           |                                 |                              |                                 |                                  |                   | Out of range |
| Morgan Hills 1A-7H-A168 - HZ - FINAL             |                                 |                              |                                 |                                  |                   | Out of range |
| Morgan Hills 1B-7H-A168 - HZ - FINAL             |                                 |                              |                                 |                                  |                   | Out of range |
| Morgan Hills 1C-7H-A168 - HZ - FINAL             |                                 |                              |                                 |                                  |                   | Out of range |
| Morgan Hills 1D-7H-A168 - HZ - FINAL             |                                 |                              |                                 |                                  |                   | Out of range |
| Morgan Hills 1E-7H-A168 - HZ - FINAL             |                                 |                              |                                 |                                  |                   | Out of range |
| Morgan Hills 1F-7H-A168 - HZ - FINAL             |                                 |                              |                                 |                                  |                   | Out of range |
| Morgan Hills 1G-7H-A168 - HZ - FINAL             |                                 |                              |                                 |                                  |                   | Out of range |
| Morgan Hills 1H-7H-A168 - HZ - FINAL             |                                 |                              |                                 |                                  |                   | Out of range |
| Morgan Hills 1I-7H-A168 - OH - FINAL             |                                 |                              |                                 |                                  |                   | Out of range |
| SOSA 11-18 (EXISTING) - CPR WELL - SURVEYS       |                                 |                              |                                 |                                  |                   | Out of range |
| SOSA 12-18 (EXISTING) - CPR WELL - SURVEYS       |                                 |                              |                                 |                                  |                   | Out of range |
| SOSA 21-18 (EXISTING) - CPR WELL - SURVEYS       |                                 |                              |                                 |                                  |                   | Out of range |
| SOSA 22-18 (EXISTING) - CPR WELL - SURVEYS       |                                 |                              |                                 |                                  |                   | Out of range |
| SOSA A UNIT 1 (EXISTING) - CPR WELL - GYRO       |                                 |                              |                                 |                                  |                   | Out of range |
| TALLGRASS 33-17 (EXISTING) - KMG WELL - SURVEY   |                                 |                              |                                 |                                  |                   | Out of range |
| THOMAS 14-7(EXISTING) - CPR WELL - SURVEYS       |                                 |                              |                                 |                                  |                   | Out of range |
| THOMAS 24-7 (EXISTING) - CPR WELL - SURVEYS      |                                 |                              |                                 |                                  |                   | Out of range |
| THOMAS 2-8-7 (EXISTING) - CPR WELL - SURVEYS     |                                 |                              |                                 |                                  |                   | Out of range |
| THOMAS 33-7 (EXISTING) - CPR WELL - SURVEYS      |                                 |                              |                                 |                                  |                   | Out of range |
| THOMAS 7-12 (EXISTING) - CPR WELL - GYRO         |                                 |                              |                                 |                                  |                   | Out of range |
| Thomas 7-14 (AL) - Existing - NO SURVEYS         |                                 |                              |                                 |                                  |                   | Out of range |

CC - Min centre to center distance or convergent point, SF - min separation factor, ES - min ellipse separation



# Cathedral Energy Services

## Anticollision Summary Report

|                           |                                |                                     |   |
|---------------------------|--------------------------------|-------------------------------------|---|
| <b>Company:</b>           | Crestone Peak Resources        | <b>Local Co-ordinate Reference:</b> | Well DREAM WEAVER South 3E-21H-N268 -<br>Slot DREAM WEAVER South 3E-21H-N268<br>SHL |
| <b>Project:</b>           | DJ BASIN                       | <b>TVD Reference:</b>               | 23' KB @ 4924.00usft (Original Well Elev)   |
| <b>Reference Site:</b>    | S21-T2N-R68W                   | <b>MD Reference:</b>                | 23' KB @ 4924.00usft (Original Well Elev)   |
| <b>Site Error:</b>        | 0.00 usft                      | <b>North Reference:</b>             | True  |
| <b>Reference Well:</b>    | DREAM WEAVER South 3E-21H-N268 | <b>Survey Calculation Method:</b>   | Minimum Curvature   |
| <b>Well Error:</b>        | 0.00 usft                      | <b>Output errors are at</b>         | 2.00 sigma  |
| <b>Reference Wellbore</b> | OH                             | <b>Database:</b>                    | USA EDM 5000 Multi Users DB   |
| <b>Reference Design:</b>  | PLAN #1                        | <b>Offset TVD Reference:</b>        | Offset Datum  |

| Summary   |  |                                       |  |   |                      |              |
|---|--|---------------------------------------|--|---|----------------------|--------------|
| Site Name<br>Offset Well - Wellbore - Design    | Reference<br>Measured<br>Depth<br>(usft) | Offset<br>Measured<br>Depth<br>(usft) | Distance<br>Between<br>Centres<br>(usft) | Distance<br>Between<br>Ellipses<br>(usft) | Separation<br>Factor | Warning      |
| S7-T1N-R68W (Woolley-S/B/Morgan Hills)          |  |                                       |  |   |                      |              |
| THOMAS E UNIT 1 (EXISTING) - CPR WELL - GYRO    |  |                                       |  |   |                      | Out of range |
| THOMAS E UNIT 2 - VESSELS WELL - INC ONLY       |  |                                       |  |   |                      | Out of range |
| THOMAS K UNIT 1 (EXISTING) - EXISTING - NO SURV |  |                                       |  |   |                      | Out of range |
| WHEELER G UNIT 1 - CPR - GYRO                   |  |                                       |  |   |                      | Out of range |
| WIGGETT 13-1 - CPR - GYRO                       |  |                                       |  |   |                      | Out of range |
| WIGGETT 8-2-13 (EXISTING) - CPR WELL - SURVEYS  |  |                                       |  |   |                      | Out of range |
| WOOLLEY 11-7 (EXISTING) - CPR WELL - SURVEYS    |  |                                       |  |   |                      | Out of range |
| WOOLLEY 12-7 (EXISTING) - CPR WELL - GYRO       |  |                                       |  |   |                      | Out of range |
| WOOLLEY 21-7 (EXISTING) - CPR WELL - GYRO       |  |                                       |  |   |                      | Out of range |
| WOOLLEY 22-7 (EXISTING) - CPR WELL - SURVEYS    |  |                                       |  |   |                      | Out of range |
| WOOLLEY 2-4-7 (EXISTING) - CPR WELL - SURVEYS   |  |                                       |  |   |                      | Out of range |
| WOOLLEY 4-0-7 (EXISTING) - CPR WELL - SURVEYS   |  |                                       |  |   |                      | Out of range |
| WOOLLEY 41-7 (EXISTING) - CPR WELL - GYRO       |  |                                       |  |   |                      | Out of range |
| WOOLLEY 42-7 (EXISTING) - CPR WELL - GYRO       |  |                                       |  |   |                      | Out of range |
| WOOLLEY 42-7 KPK (EXISTING) - KPK WELL - SURVE  |  |                                       |  |   |                      | Out of range |
| WOOLLEY A 1-7 (EXISTING) - CPR WELL - GYRO      |  |                                       |  |   |                      | Out of range |
| WOOLLEY F UNIT 1 (EXISTING) - CPR WELL - GYRO   |  |                                       |  |   |                      | Out of range |
| Woolley-Becky 2A-7H-E168 - Hz - FINAL           |  |                                       |  |   |                      | Out of range |
| Woolley-Becky 2B-7H-E168 - Hz - FINAL           |  |                                       |  |   |                      | Out of range |
| Woolley-Becky 2C-7H-E168 - Hz - FINAL           |  |                                       |  |   |                      | Out of range |
| Woolley-Becky 2D-7H-E168 - Hz - FINAL           |  |                                       |  |   |                      | Out of range |
| Woolley-Becky 2E-7H-E168 - Hz - FINAL           |  |                                       |  |   |                      | Out of range |
| Woolley-Becky 2F-7H-E168 - Hz - FINAL           |  |                                       |  |   |                      | Out of range |
| Woolley-Becky 2G-7H-E168 - Hz - FINAL           |  |                                       |  |   |                      | Out of range |
| Woolley-Becky 2H-7H-E168 - Hz - FINAL           |  |                                       |  |   |                      | Out of range |
| Woolley-Sosa 2A-7H-E168 - OH - FINAL            |  |                                       |  |   |                      | Out of range |
| Woolley-Sosa 2B-7H-E168 - HZ - FINAL            |  |                                       |  |   |                      | Out of range |
| Woolley-Sosa 2C-7H-E168 - HZ - FINAL            |  |                                       |  |   |                      | Out of range |
| Woolley-Sosa 2D-7H-E168 - HZ - FINAL            |  |                                       |  |   |                      | Out of range |
| Woolley-Sosa 2E-7H-E168 - HZ - FINAL            |  |                                       |  |   |                      | Out of range |
| Woolley-Sosa 2F-7H-E168 - HZ - FINAL            |  |                                       |  |   |                      | Out of range |
| Woolley-Sosa 2G-7H-E168 - HZ - FINAL            |  |                                       |  |   |                      | Out of range |

# Cathedral Energy Services

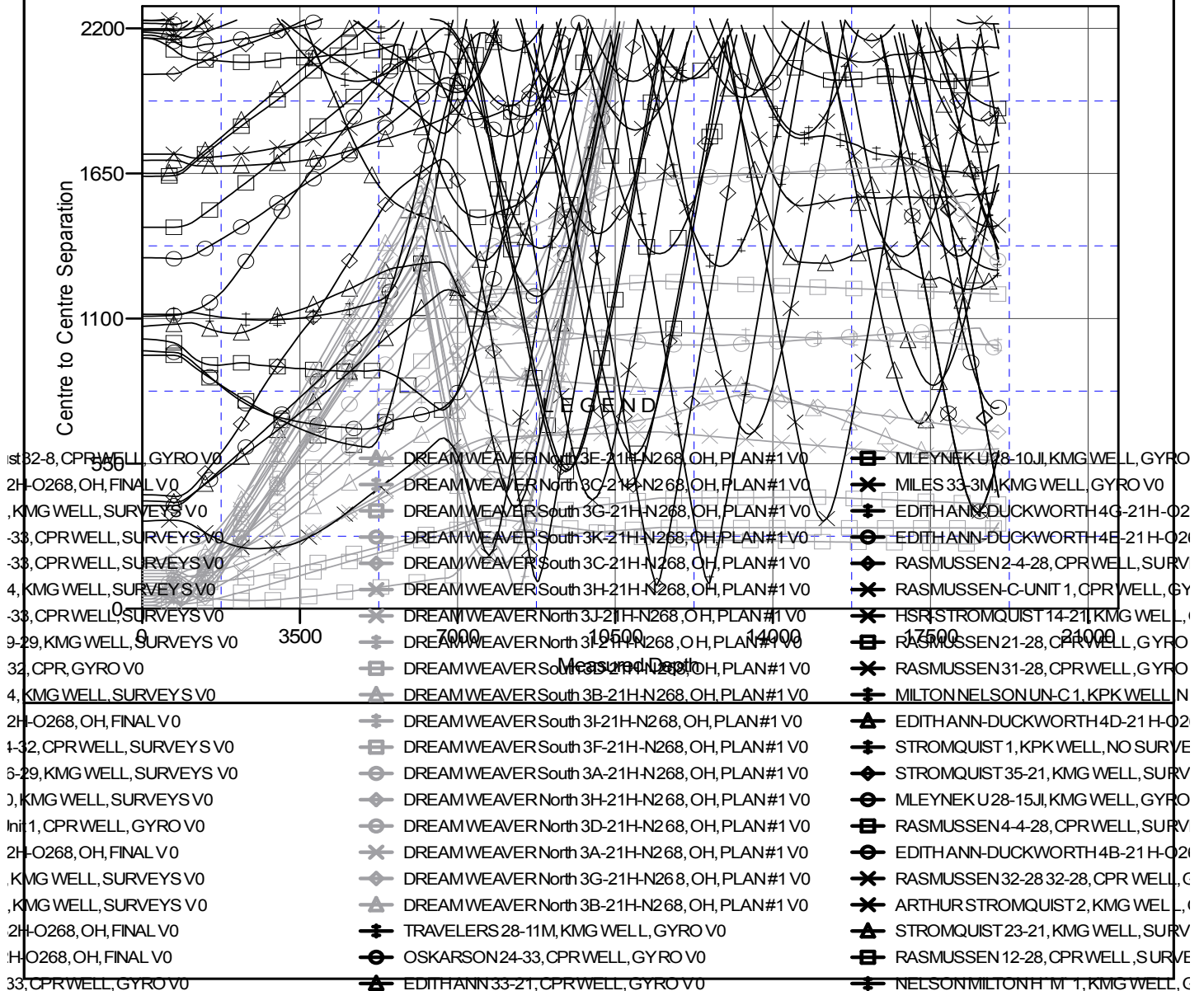
## Anticollision Summary Report

|                           |                                |                                     |   |
|---------------------------|--------------------------------|-------------------------------------|---|
| <b>Company:</b>           | Crestone Peak Resources        | <b>Local Co-ordinate Reference:</b> | Well DREAM WEAVER South 3E-21H-N268 - Slot DREAM WEAVER South 3E-21H-N268 SHL |
| <b>Project:</b>           | DJ BASIN                       | <b>TVD Reference:</b>               | 23' KB @ 4924.00usft (Original Well Elev)                                     |
| <b>Reference Site:</b>    | S21-T2N-R68W                   | <b>MD Reference:</b>                | 23' KB @ 4924.00usft (Original Well Elev)                                     |
| <b>Site Error:</b>        | 0.00 usft                      | <b>North Reference:</b>             | True  |
| <b>Reference Well:</b>    | DREAM WEAVER South 3E-21H-N268 | <b>Survey Calculation Method:</b>   | Minimum Curvature   |
| <b>Well Error:</b>        | 0.00 usft                      | <b>Output errors are at</b>         | 2.00 sigma  |
| <b>Reference Wellbore</b> | OH                             | <b>Database:</b>                    | USA EDM 5000 Multi Users DB   |
| <b>Reference Design:</b>  | PLAN #1                        | <b>Offset TVD Reference:</b>        | Offset Datum  |

Reference Depths are relative to 23' KB @ 4924.00usft (Original Well E  
Offset Depths are relative to Offset Datum  
Central Meridian is -105.500000

Coordinates are relative to: DREAM WEAVER South 3E-21H-N268 - Slot DREAM  
Coordinate System is US State Plane 1983, Colorado Northern Zone  
Grid Convergence at Surface is: 0.32°

### Ladder Plot



CC - Min centre to center distance or convergent point, SF - min separation factor, ES - min ellipse separation

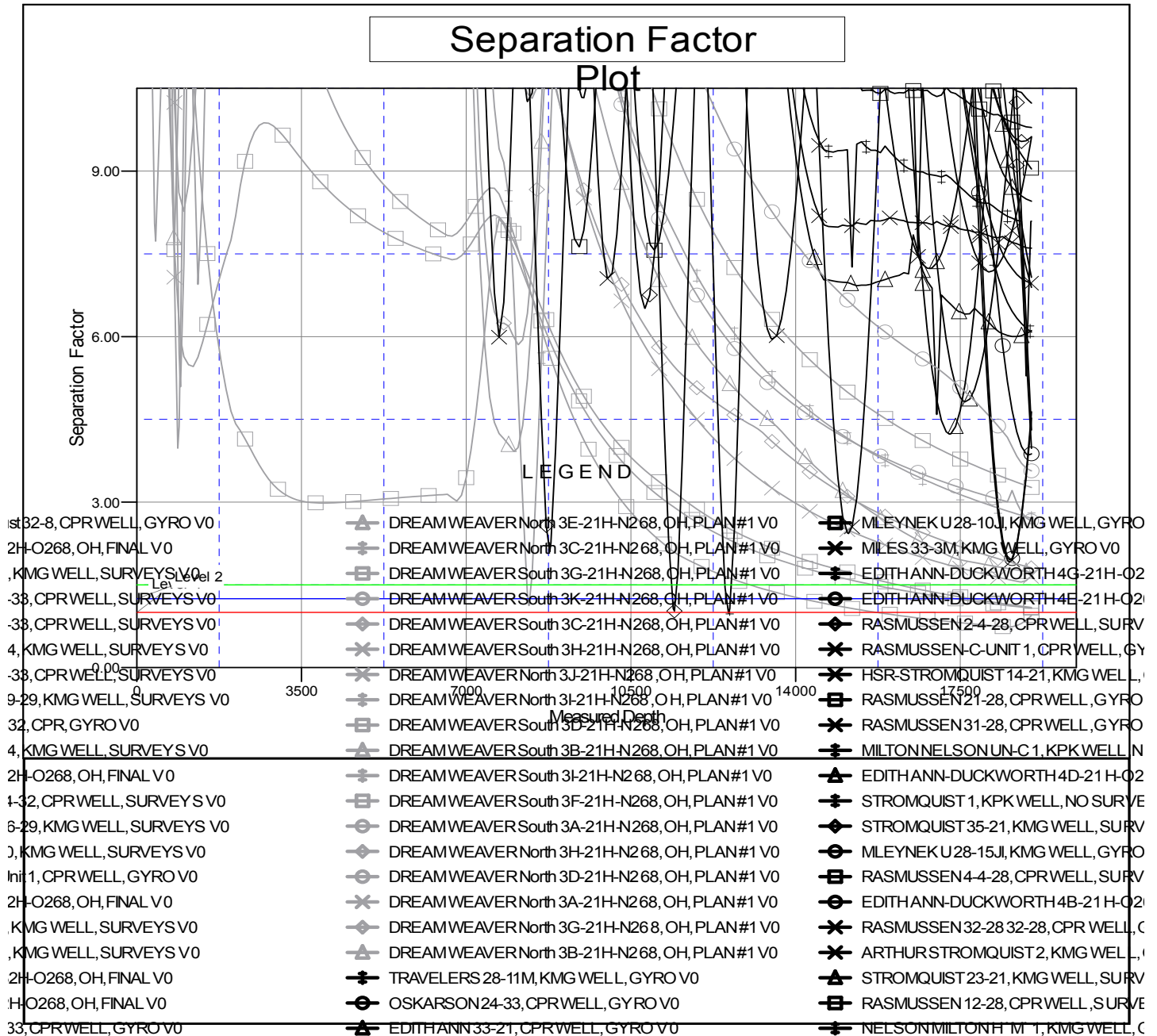
# Cathedral Energy Services

## Anticollision Summary Report

|                           |                                |                                     |   |
|---------------------------|--------------------------------|-------------------------------------|---|
| <b>Company:</b>           | Crestone Peak Resources        | <b>Local Co-ordinate Reference:</b> | Well DREAM WEAVER South 3E-21H-N268 - Slot DREAM WEAVER South 3E-21H-N268 SHL |
| <b>Project:</b>           | DJ BASIN                       | <b>TVD Reference:</b>               | 23' KB @ 4924.00usft (Original Well Elev)                                     |
| <b>Reference Site:</b>    | S21-T2N-R68W                   | <b>MD Reference:</b>                | 23' KB @ 4924.00usft (Original Well Elev)                                     |
| <b>Site Error:</b>        | 0.00 usft                      | <b>North Reference:</b>             | True  |
| <b>Reference Well:</b>    | DREAM WEAVER South 3E-21H-N268 | <b>Survey Calculation Method:</b>   | Minimum Curvature   |
| <b>Well Error:</b>        | 0.00 usft                      | <b>Output errors are at</b>         | 2.00 sigma  |
| <b>Reference Wellbore</b> | OH                             | <b>Database:</b>                    | USA EDM 5000 Multi Users DB   |
| <b>Reference Design:</b>  | PLAN #1                        | <b>Offset TVD Reference:</b>        | Offset Datum  |

Reference Depths are relative to 23' KB @ 4924.00usft (Original Well E  
Offset Depths are relative to Offset Datum  
Central Meridian is -105.500000

Coordinates are relative to: DREAM WEAVER South 3E-21H-N268 - Slot DREAM  
Coordinate System is US State Plane 1983, Colorado Northern Zone  
Grid Convergence at Surface is: 0.32°



CC - Min centre to center distance or convergent point, SF - min separation factor, ES - min ellipse separation