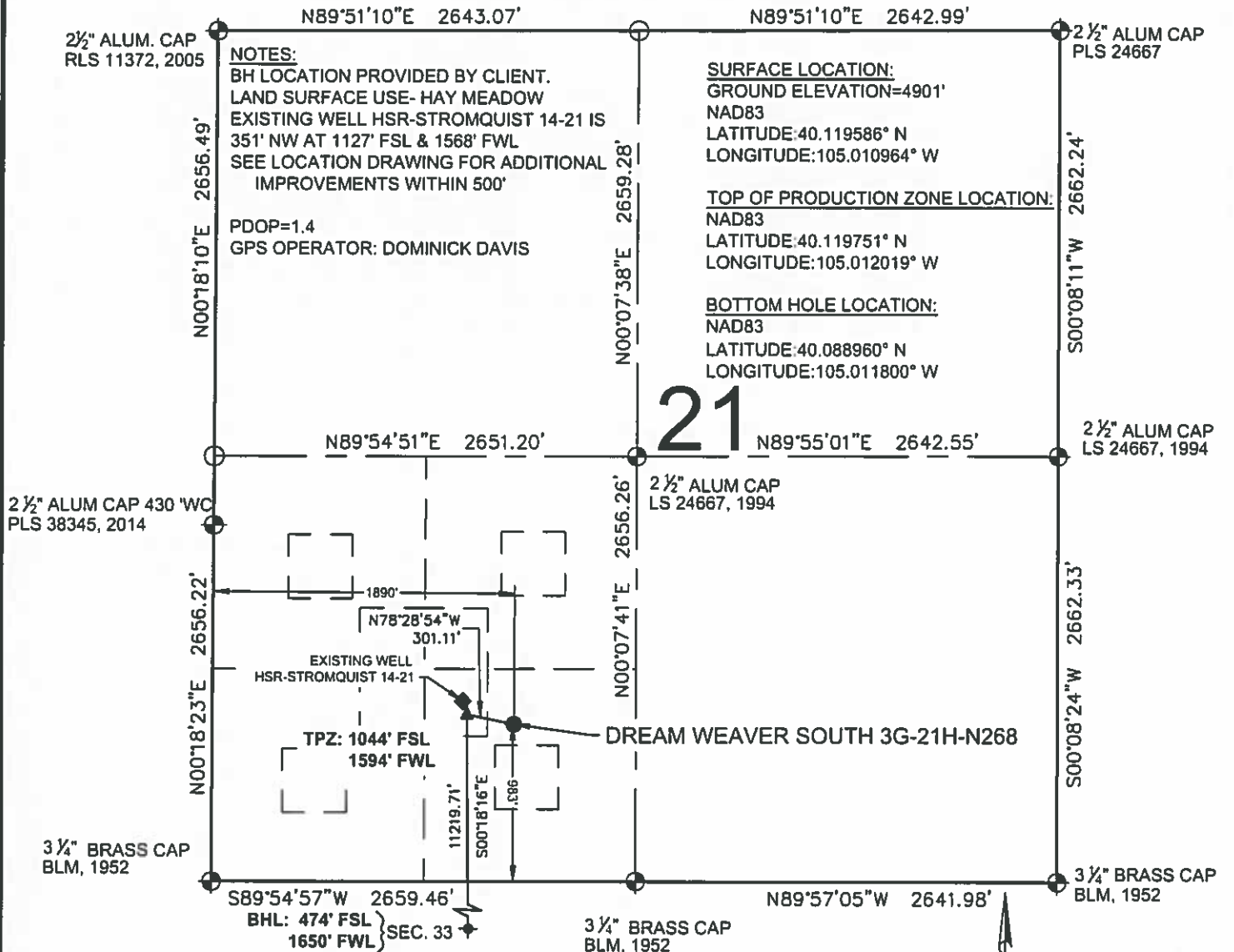


DREAM WEAVER SOUTH 3G-21H-N268 WELL LOCATION EXHIBIT



LEGEND

- ⊕ = EXISTING MONUMENT
- = CALCULATED POSITION
- = PROPOSED WELL
- ◆ = EXISTING WELL
- ⬮ = BOTTOM HOLE
- ▲ = TOP OF PRODUCTION ZONE
- TPZ = TOP OF PRODUCTION ZONE
- BHL = BOTTOM HOLE LOCATION
- WC = WITNESS CORNER

NOTES:

- THIS FIELD SURVEY CONFORMS TO THE MINIMUM STANDARDS SET BY THE C O G C C, RULE NO. 215
- ALL DISTANCES AND BEARINGS SHOWN HEREON ARE GROUND VALUES AS MEASURED IN THE FIELD, WITH TIES TO WELLS MEASURED PERPENDICULAR TO LINES SHOWN HEREON. THIS LOW DISTORTION PROJECTION (LDP) IS BASED ON THE NORTH AMERICAN DATUM OF 1983, U.S. SURVEY FOOT WITH A LATITUDE ORIGIN OF 40.131498°N, A CENTRAL MERIDIAN LONGITUDE OF 104.998741°W, AND A SCALE FACTOR ON THE CENTRAL MERIDIAN OF 1.000232 (EXACT). THE LDP BASIS OF BEARINGS IS GEODETIC NORTH.
- FIELD VERIFICATION OF MONUMENTS COMPLETED WITHIN 1 YEAR OF SIGNATURE DATE, UNLESS OTHERWISE NOTED.

WELL DREAM WEAVER SOUTH 3G-21H-N268 TO BE LOCATED 983' FSL & 1890' FWL

I, ROBERT J. GUFFEY, A LICENSED PROFESSIONAL LAND SURVEYOR IN THE STATE OF COLORADO, DO HEREBY STATE TO **CRESTONE PEAK RESOURCES** THAT THE WELL LOCATION EXHIBIT SHOWN HEREON WAS PREPARED BY ME OR UNDER MY DIRECT SUPERVISION AND THE DRAWING SHOWN HEREON ACCURATELY DEPICTS THE PROPOSED LOCATION OF THE WELL. THIS EXHIBIT MEETS THE REQUIREMENTS OF A GIS LAND POSITION AS DEFINED BY SECTION 38-51-102 (7.5) C.R.S. AND AS SUCH PER SECTION 38-51-109.3 C.R.S. CANNOT BE RELIED UPON TO DETERMINE OWNERSHIP.

ROBERT J. GUFFEY, PLS 20680
COLORADO LICENSED PROFESSIONAL LAND SURVEYOR
FOR AND ON BEHALF OF P.F.S., LLC
d.b.a. ASCENT GEOMATICS SOLUTIONS



SHEET 1 OF 3

NOTICE: ACCORDING TO COLORADO LAW YOU MUST COMMENCE ANY LEGAL ACTION BASED UPON ANY DEFECT IN THIS SURVEY WITHIN THREE YEARS AFTER YOU FIRST DISCOVER SUCH DEFECT. IN NO EVENT MAY ANY ACTION BASED UPON ANY DEFECT IN THIS SURVEY BE COMMENCED MORE THAN TEN YEARS FROM THIS SAID DATE OF THIS CERTIFICATION SHOWN HEREON.



FIELD DATE	02-13-18
DRAWING DATE	04-12-18
BY	RMC
CHECKED	CLP

WELL NAME	DREAM WEAVER SOUTH 3G-21H-N268
SURFACE LOCATION	SE 1/4 SW 1/4 SEC. 21, T2N, R68W, 6TH P.M.
	WELD COUNTY, COLORADO

PREPARED FOR:



**CRESTONE PEAK
RESOURCES**

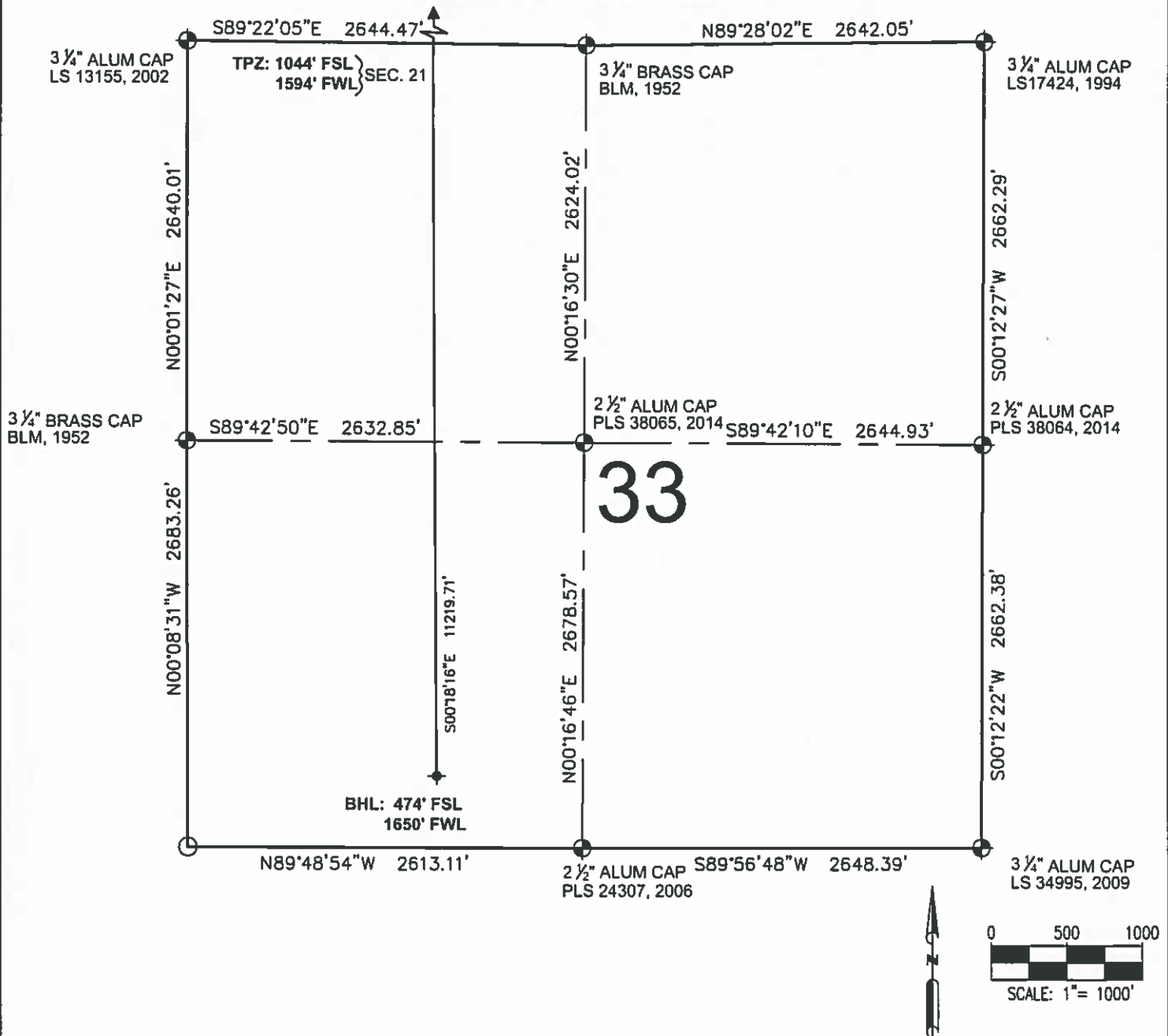
28



A circular blue ink seal for a Colorado Licensed Professional Land Surveyor. The outer ring contains the text "COLORADO LICENSED" at the top and "PROFESSIONAL LAND SURVEYOR" at the bottom, separated by dots. The center of the seal contains the name "ROBERT J. GUFFEY" at the top, the date "4/18/2018" in the middle, and the license number "20680" at the bottom. A signature, "Robert J. Guffey", is written across the bottom half of the seal.

CRESTONE PEAK
RESOURCES

DREAM WEAVER SOUTH 3G-21H-N268 WELL LOCATION EXHIBIT





LEGEND

- = EXISTING MONUMENT ◆ = BOTTOM HOLE
- = CALCULATED POSITION ▲ = TOP OF PRODUCTION ZONE
- = PROPOSED WELL TPZ = TOP OF PRODUCTION ZONE
- ◆ = EXISTING WELL BHL = BOTTOM HOLE LOCATION
- WC = WITNESS CORNER

ROBERT J. GUFFEY, PLS 20680
COLORADO LICENSED PROFESSIONAL LAND SURVEYOR
FOR AND ON BEHALF OF P.F.S., LLC
d.b.a. ASCENT GEOMATICS SOLUTIONS



SHEET 3 OF 3

 <p>7535 Hilltop Circle Denver, CO 80221 303.928.7124 www.ascentgeomatics.com</p>	FIELD DATE 02-13-18 DRAWING DATE 04-12-18 BY RMC CHECKED CLP	WELL NAME DREAM WEAVER SOUTH 3G-21H-N268 SURFACE LOCATION SE 1/4 SW 1/4 SEC. 21, T2N, R68W, 6TH P.M. WELD COUNTY, COLORADO	PREPARED FOR  CRESTONE PEAK