

# **Crestone Peak Resources**

**DJ BASIN**

**S21-T2N-R68W**

**DREAM WEAVER South 3A-21H-N268**

**OH**

**PLAN #1**

## **Anticollision Summary Report**

**17 April, 2018**

# Cathedral Energy Services

## Anticollision Summary Report

<b>Company:</b>	Crestone Peak Resources	<b>Local Co-ordinate Reference:</b>	Well DREAM WEAVER South 3A-21H-N268 - Slot DREAM WEAVER South 3A-21H-N268 SHL
<b>Project:</b>	DJ BASIN	<b>TVD Reference:</b>	23' KB @ 4924.00usft (Original Well Elev)
<b>Reference Site:</b>	S21-T2N-R68W	<b>MD Reference:</b>	23' KB @ 4924.00usft (Original Well Elev)
<b>Site Error:</b>	0.00 usft	<b>North Reference:</b>	True
<b>Reference Well:</b>	DREAM WEAVER South 3A-21H-N268	<b>Survey Calculation Method:</b>	Minimum Curvature
<b>Well Error:</b>	0.00 usft	<b>Output errors are at</b>	2.00 sigma
<b>Reference Wellbore</b>	OH	<b>Database:</b>	USA EDM 5000 Multi Users DB
<b>Reference Design:</b>	PLAN #1	<b>Offset TVD Reference:</b>	Offset Datum

<b>Reference</b>	PLAN #1		
<b>Filter type:</b>	NO GLOBAL FILTER: Using user defined selection & filtering criteria		
<b>Interpolation Method:</b>	MD Interval 100.00usft	<b>Error Model:</b>	ISCWSA
<b>Depth Range:</b>	Unlimited	<b>Scan Method:</b>	Closest Approach 3D
<b>Results Limited by:</b>	Maximum center-center distance of 2,237.05 usft	<b>Error Surface:</b>	Pedal Curve
<b>Warning Levels Evaluated at:</b>	2.00 Sigma	<b>Casing Method:</b>	Not applied

<b>Survey Tool Program</b>	<b>Date</b>	3/22/2018		
<b>From (usft)</b>	<b>To (usft)</b>	<b>Survey (Wellbore)</b>	<b>Tool Name</b>	<b>Description</b>
0.00	2,000.00	PLAN #1 (OH)	VESSI_GYROFLEX	VESSI Gyroflex Gyro
2,001.00	19,287.83	PLAN #1 (OH)	MWD+HDGM	OWSG MWD + HDGM

Summary						
Site Name	Reference Measured Depth (usft)	Offset Measured Depth (usft)	Distance Between Centres (usft)	Distance Between Ellipses (usft)	Separation Factor	Warning
S21-T2N-R68W						
DREAM WEAVER North 3A-21H-N268 - OH - PLAN #1	8,007.20	8,129.20	69.65	23.18	1.499	Level 3, CC
DREAM WEAVER North 3A-21H-N268 - OH - PLAN #1	8,200.00	7,934.83	71.57	22.88	1.470	Level 3, ES, SF
DREAM WEAVER North 3B-21H-N268 - OH - PLAN #1	700.00	686.47	74.32	72.05	32.629	CC, ES
DREAM WEAVER North 3B-21H-N268 - OH - PLAN #1	8,447.62	7,753.84	151.10	101.33	3.036	SF
DREAM WEAVER North 3C-21H-N268 - OH - PLAN #1	709.05	697.37	56.69	54.39	24.618	CC, ES
DREAM WEAVER North 3C-21H-N268 - OH - PLAN #1	7,537.72	8,378.00	302.44	253.56	6.186	SF
DREAM WEAVER North 3D-21H-N268 - OH - PLAN #1	707.68	697.98	42.52	40.22	18.543	CC, ES
DREAM WEAVER North 3D-21H-N268 - OH - PLAN #1	7,600.00	8,375.37	561.81	513.81	11.704	SF
DREAM WEAVER North 3E-21H-N268 - OH - PLAN #1	696.29	688.47	32.70	30.45	14.524	CC, ES, SF
DREAM WEAVER North 3F-21H-N268 - OH - PLAN #1	663.99	657.94	27.36	25.22	12.790	CC, ES, SF
DREAM WEAVER North 3G-21H-N268 - OH - PLAN #1	615.27	610.69	22.97	21.00	11.678	CC, ES, SF
DREAM WEAVER North 3H-21H-N268 - OH - PLAN #1	565.22	561.96	18.39	16.60	10.291	CC, ES, SF
DREAM WEAVER North 3I-21H-N268 - OH - PLAN #1	452.74	451.95	11.15	9.77	8.052	CC, ES, SF
DREAM WEAVER North 3J-21H-N268 - OH - PLAN #1	398.23	397.74	8.25	7.07	6.956	CC, ES
DREAM WEAVER North 3J-21H-N268 - OH - PLAN #1	400.00	399.48	8.26	7.07	6.924	SF
DREAM WEAVER North 3K-21H-N268 - OH - PLAN #1	317.34	317.16	5.23	4.34	5.829	CC, ES, SF
DREAM WEAVER South 3B-21H-N268 - OH - PLAN #1	588.87	591.44	11.87	9.88	5.968	CC, ES
DREAM WEAVER South 3B-21H-N268 - OH - PLAN #1	19,287.83	19,362.86	441.74	77.06	1.211	Level 2, SF
DREAM WEAVER South 3C-21H-N268 - OH - PLAN #1	100.00	100.00	24.29	24.15	178.176	CC
DREAM WEAVER South 3C-21H-N268 - OH - PLAN #1	19,287.83	19,079.80	323.76	-33.17	0.907	Level 1, ES, SF
DREAM WEAVER South 3D-21H-N268 - OH - PLAN #1	100.00	100.00	36.43	36.29	267.262	CC, ES
DREAM WEAVER South 3D-21H-N268 - OH - PLAN #1	19,287.83	19,150.03	649.95	277.23	1.744	SF
DREAM WEAVER South 3E-21H-N268 - OH - PLAN #1	100.00	100.00	48.57	48.43	356.353	CC, ES
DREAM WEAVER South 3E-21H-N268 - OH - PLAN #1	19,287.83	19,003.24	984.27	614.30	2.660	SF
DREAM WEAVER South 3F-21H-N268 - OH - PLAN #1	100.00	100.00	60.71	60.58	445.445	CC
DREAM WEAVER South 3F-21H-N268 - OH - PLAN #1	100.03	100.03	60.71	60.58	445.040	ES
DREAM WEAVER South 3F-21H-N268 - OH - PLAN #1	19,287.83	19,218.36	1,187.74	815.94	3.195	SF
DREAM WEAVER South 3G-21H-N268 - OH - PLAN #1	100.00	100.00	72.86	72.72	534.532	CC
DREAM WEAVER South 3G-21H-N268 - OH - PLAN #1	100.03	100.03	72.86	72.72	534.170	ES
DREAM WEAVER South 3G-21H-N268 - OH - PLAN #1	19,287.83	19,084.09	1,364.80	992.19	3.663	SF
DREAM WEAVER South 3H-21H-N268 - OH - PLAN #1	100.00	100.00	85.00	84.86	623.621	CC
DREAM WEAVER South 3H-21H-N268 - OH - PLAN #1	100.02	100.02	85.00	84.86	623.302	ES
DREAM WEAVER South 3H-21H-N268 - OH - PLAN #1	19,287.83	18,800.00	1,558.29	1,194.29	4.281	SF
DREAM WEAVER South 3I-21H-N268 - OH - PLAN #1	100.00	101.00	97.14	97.00	703.571	CC

CC - Min centre to center distance or convergent point, SF - min separation factor, ES - min ellipse separation

# Cathedral Energy Services

## Anticollision Summary Report

<b>Company:</b>	Crestone Peak Resources	<b>Local Co-ordinate Reference:</b>	Well DREAM WEAVER South 3A-21H-N268 - Slot DREAM WEAVER South 3A-21H-N268 SHL
<b>Project:</b>	DJ BASIN	<b>TVD Reference:</b>	23' KB @ 4924.00usft (Original Well Elev)
<b>Reference Site:</b>	S21-T2N-R68W	<b>MD Reference:</b>	23' KB @ 4924.00usft (Original Well Elev)
<b>Site Error:</b>	0.00 usft	<b>North Reference:</b>	True
<b>Reference Well:</b>	DREAM WEAVER South 3A-21H-N268	<b>Survey Calculation Method:</b>	Minimum Curvature
<b>Well Error:</b>	0.00 usft	<b>Output errors are at</b>	2.00 sigma
<b>Reference Wellbore</b>	OH	<b>Database:</b>	USA EDM 5000 Multi Users DB
<b>Reference Design:</b>	PLAN #1	<b>Offset TVD Reference:</b>	Offset Datum

Summary						
Site Name Offset Well - Wellbore - Design	Reference Measured Depth (usft)	Offset Measured Depth (usft)	Distance Between Centres (usft)	Distance Between Ellipses (usft)	Separation Factor	Warning
S21-T2N-R68W						
DREAM WEAVER South 3I-21H-N268 - OH - PLAN #1	100.01	101.01	97.14	97.00	703.303	ES
DREAM WEAVER South 3I-21H-N268 - OH - PLAN #1	19,287.83	19,088.81	1,974.46	1,602.39	5.307	SF
DREAM WEAVER South 3J-21H-N268 - OH - PLAN #1	100.00	101.00	109.29	109.15	791.522	CC
DREAM WEAVER South 3J-21H-N268 - OH - PLAN #1	100.01	101.01	109.29	109.15	791.297	ES
DREAM WEAVER South 3J-21H-N268 - OH - PLAN #1	19,287.83	19,235.59	2,153.97	1,782.28	5.795	SF
DREAM WEAVER South 3K-21H-N268 - OH - PLAN #1	100.00	101.00	121.43	121.29	879.464	CC, ES
DREAM WEAVER South 3K-21H-N268 - OH - PLAN #1	7,000.00	6,633.20	2,183.70	2,144.31	55.435	SF

# Cathedral Energy Services

## Anticollision Summary Report

<b>Company:</b>	Crestone Peak Resources	<b>Local Co-ordinate Reference:</b>	Well DREAM WEAVER South 3A-21H-N268 - Slot DREAM WEAVER South 3A-21H-N268 SHL
<b>Project:</b>	DJ BASIN	<b>TVD Reference:</b>	23' KB @ 4924.00usft (Original Well Elev)
<b>Reference Site:</b>	S21-T2N-R68W	<b>MD Reference:</b>	23' KB @ 4924.00usft (Original Well Elev)
<b>Site Error:</b>	0.00 usft	<b>North Reference:</b>	True
<b>Reference Well:</b>	DREAM WEAVER South 3A-21H-N268	<b>Survey Calculation Method:</b>	Minimum Curvature
<b>Well Error:</b>	0.00 usft	<b>Output errors are at</b>	2.00 sigma
<b>Reference Wellbore</b>	OH	<b>Database:</b>	USA EDM 5000 Multi Users DB
<b>Reference Design:</b>	PLAN #1	<b>Offset TVD Reference:</b>	Offset Datum

Summary						
Site Name Offset Well - Wellbore - Design	Reference Measured Depth (usft)	Offset Measured Depth (usft)	Distance Between Centres (usft)	Distance Between Ellipses (usft)	Separation Factor	Warning
S21-T2N-R68W (OFFSETS)						
ARTHUR STROMQUIST 2 - KMG WELL - GYRO	6,904.39	6,621.41	1,607.10	1,568.39	41.512	CC, ES
ARTHUR STROMQUIST 2 - KMG WELL - GYRO	7,100.00	6,812.39	1,634.13	1,594.05	40.774	SF
BLISS 41-21 - KPK WELL - SURVEYS						Out of range
BOULDER CREEK 9-4K8 - SNYDER OIL - NO SURVEY						Out of range
BROWN C UNIT 1 - CPR WELL - GYRO						Out of range
CANINO 1 - HUGHES C W-SOTEXCO 1 - NO SURVEY						Out of range
CHAMPLIN 41-4/1-68/ 1 - KMG WELL - NO SURVEYS						Out of range
CHAMPLIN 86 AMOCO B 2 - KPK WELL - NO SURVEY						Out of range
CHAMPLIN 86 AMOCO UT/Q 1 - KMG WELL - GYRO						Out of range
CHAMPLIN 86 AMOCO-B 1 - KPK WELL - NO SURVEY						Out of range
CHAMPLIN 86 AMOCO-B 3 - KPK WELL - NO SURVEY						Out of range
CHAMPLIN 86 AMOCO-B 4 - KPK WELL - NO SURVEY						Out of range
CHAMPLIN 86 AMOCO-B 5 - KPK WELL - NO SURVEY						Out of range
CHAMPLIN 86 AMOCO-B 6 - KPK WELL - NO SURVEY						Out of range
CHAMPLIN 86 AMOCO-F 5 - KPK WELL - NO SURVEY						Out of range
CHAMPLIN 86 AMOCO-O 9 - KMG WELL - GYRO	19,287.83	7,545.64	2,009.06	1,898.46	18.165	CC, ES, SF
CHAMPLIN32-4/1-68/ 2 - KMG WELL - NO SURVEYS						Out of range
CHMPLN 86 AMOCO-F 1 - KPK WELL - NO SURVEYS						Out of range
COLCLASURE 42-21 - KPK WELL - NO SURVEYS						Out of range
COOLEY 11-16 - KMG WELL - SURVEYS						Out of range
COOLEY 12-16 - KMG WELL - SURVEYS						Out of range
COOLEY 13-16 - KMG WELL - SURVEYS						Out of range
COOLEY 14-16 - KMG WELL - SURVEYS						Out of range
COOLEY 22-16 - KMG WELL - SURVEYS						Out of range
COOLEY 23-16 - KMG WELL - SURVEYS						Out of range
COOLEY 35-16 - KMG WELL - SURVEYS						Out of range
COPPER 31-15 - KMG WELL - SURVEYS						Out of range
CPC 31-4 (1-68) 3 - ANADARKO WELL - NO SURVEYS						Out of range
CPC 42-4 (1-68) 4 - ANADARKO WELL - NO SURVEYS						Out of range
DOMENICO 1 - NOBLE WELL - GYRO						Out of range
DUCKWORTH 31-16 - CPR WELL - GYRO						Out of range
DUCKWORTH 32-16 - CPR WELL - SURVEYS						Out of range
DUCKWORTH 33-16 - CPR WELL - SURVEYS						Out of range
DUCKWORTH 41-16 - CPR WELL - SURVEYS						Out of range
DUCKWORTH 43-16 - CPR WELL - GYRO						Out of range
DUCKWORTH 44-16 - CPR WELL - SURVEYS						Out of range
DUCKWORTH 6-0-16 - CPR WELL - SURVEYS						Out of range
DUCKWORTH B UNIT 1 - CPR WELL - GYRO						Out of range
DUCKWORTH B UNIT 2 - CPR WELL - GYRO						Out of range
EAST RINN 0-4-15 - CPR WELL - SURVEYS						Out of range
EAST RINN 13-15 - CPR WELL - SURVEYS						Out of range
EDITH ANN 1 - CPR WELL - GYRO						Out of range
EDITH ANN 33-21 - CPR WELL - GYRO	956.42	942.99	1,650.73	1,647.52	515.108	CC, ES
EDITH ANN 33-21 - CPR WELL - GYRO	4,300.00	4,174.66	2,235.68	2,217.59	123.539	SF
EDITH ANN 34-21 - CPR WELL - GYRO	0.00	0.00	1,366.82			
EDITH ANN 34-21 - CPR WELL - GYRO	200.00	195.73	1,367.10	1,366.61	2,798.951	ES
EDITH ANN 34-21 - CPR WELL - GYRO	4,300.00	4,235.03	2,218.07	2,200.97	129.699	SF
EDITH ANN 4-21 - CPR WELL - SURVEYS						Out of range
EDITH ANN 44-21 - CPR WELL - GYRO						Out of range
EDITH ANN 6-8-21 - CPR WELL - SURVEYS						Out of range
EDITH ANN 8-8-21 - CPR WELL - SURVEYS						Out of range

CC - Min centre to center distance or convergent point, SF - min separation factor, ES - min ellipse separation

# Cathedral Energy Services

## Anticollision Summary Report

<b>Company:</b>	Crestone Peak Resources	<b>Local Co-ordinate Reference:</b>	Well DREAM WEAVER South 3A-21H-N268 - Slot DREAM WEAVER South 3A-21H-N268 SHL
<b>Project:</b>	DJ BASIN	<b>TVD Reference:</b>	23' KB @ 4924.00usft (Original Well Elev)
<b>Reference Site:</b>	S21-T2N-R68W	<b>MD Reference:</b>	23' KB @ 4924.00usft (Original Well Elev)
<b>Site Error:</b>	0.00 usft	<b>North Reference:</b>	True
<b>Reference Well:</b>	DREAM WEAVER South 3A-21H-N268	<b>Survey Calculation Method:</b>	Minimum Curvature
<b>Well Error:</b>	0.00 usft	<b>Output errors are at</b>	2.00 sigma
<b>Reference Wellbore</b>	OH	<b>Database:</b>	USA EDM 5000 Multi Users DB
<b>Reference Design:</b>	PLAN #1	<b>Offset TVD Reference:</b>	Offset Datum

Summary						
Site Name Offset Well - Wellbore - Design	Reference Measured Depth (usft)	Offset Measured Depth (usft)	Distance Between Centres (usft)	Distance Between Ellipses (usft)	Separation Factor	Warning
S21-T2N-R68W (OFFSETS)						
EDITH ANN-DUCKWORTH 4A-21H-O268 - CPR - FINAL	469.21	687.90	2,195.03	2,193.13	1,158.016	CC
EDITH ANN-DUCKWORTH 4A-21H-O268 - CPR - FINAL	500.00	725.06	2,195.13	2,193.11	1,086.637	ES
EDITH ANN-DUCKWORTH 4A-21H-O268 - CPR - FINAL	1,300.00	1,618.02	2,236.79	2,231.42	416.507	SF
EDITH ANN-DUCKWORTH 4B-21H-O268 - CPR - FINAL	110.32	143.81	2,212.14	2,211.85	7,533.232	CC
EDITH ANN-DUCKWORTH 4B-21H-O268 - CPR - FINAL	327.60	466.18	2,212.79	2,211.55	1,785.708	ES
EDITH ANN-DUCKWORTH 4B-21H-O268 - CPR - FINAL	800.00	1,085.97	2,235.41	2,232.17	689.251	SF
EDITH ANN-DUCKWORTH 4C-21H-O268 - CPR - FINA	204.41	266.63	2,222.55	2,221.88	3,327.042	CC, ES
EDITH ANN-DUCKWORTH 4C-21H-O268 - CPR - FINA	500.00	580.82	2,232.69	2,230.93	1,269.775	SF
EDITH ANN-DUCKWORTH 4D-21H-O268 - CPR - FINA	0.00	28.63	2,234.84			
EDITH ANN-DUCKWORTH 4D-21H-O268 - CPR - FINA	200.00	224.29	2,235.78	2,235.20	3,820.831	SF
EDITH ANN-DUCKWORTH 4E-21H-O268 - CPR - FINAL						Out of range
EDITH ANN-DUCKWORTH 4F-21H-O268 - CPR - FINAL						Out of range
EDITH ANN-DUCKWORTH 4G-21H-O268 - CPR - FINA						Out of range
EDITH ANN-DUCKWORTH 4H-21H-O268 - CPR - FINA						Out of range
ERIE CORP 42-4 - KMG WELL - NO SURVEYS						Out of range
EVERIST 12-10 - KMG WELL - SURVEYS						Out of range
EVERIST 12-10X - KMG WELL - NO SURVEYS						Out of range
EVERIST 13-10 - KMG WELL - SURVEYS						Out of range
EVERIST 33-10 - KMG WELL - SURVEYS						Out of range
FAIRVIEW 1 - EXTRACTION WELL - NO SURVEYS						Out of range
FAIRVIEW 3 - EXTRACTION O&G LLC - SURVEYS						Out of range
FAIRVIEW 4 - EXTRACTION O&G LLC - SURVEYS						Out of range
FAIRVIEW 5 - EXTRACTION O&G LLC - SURVEYS						Out of range
FILE 1-17 - CPR WELL - SURVEYS						Out of range
FILE 31-17 - CPR WELL - SURVEYS						Out of range
FILE 32-17 - CPR WELL - SURVEYS						Out of range
FILE 41-17 - CPR WELL - SURVEYS						Out of range
FILE 42-17 - CPR WELL - NO SURVEYS						Out of range
FILE 4-2-17 - CPR WELL - SURVEYS						Out of range
FILE 42-17X - CPR WELL - SURVEYS						Out of range
FILE 6-0-17 - CPR WELL - SURVEYS						Out of range
FILE 8-2-17 - CPR WELL - SURVEYS						Out of range
FREDERICKS 13-27 - KMG WELL - NO SURVEYS						Out of range
FREDERICKS 13-27X - KMG WELL - SURVEYS						Out of range
GARVER U 34-5JI - KMG WELL - NO SURVEYS						Out of range
HINGLEY 1 - KPK WELL - NO SURVEYS						Out of range
HINGLEY 2 - KPK WELL - NO SUREYS						Out of range
HSR-STROMQUIST 14-21 - KMG WELL - GYRO	1,901.46	1,845.38	166.73	160.11	25.181	CC, ES
HSR-STROMQUIST 14-21 - KMG WELL - GYRO	2,100.00	2,038.00	173.58	166.30	23.834	SF
JACK A MLEYNEK 2 - KPK WELL - NO SURVEYS						Out of range
JACK MLEYNEK 1 - KPK WELL - NO SURVEYS						Out of range
JACK MLEYNEK 3 - KPK WELL - NO SURVEYS						Out of range
JACK MLEYNEK 4 - KPK WELL - NO SURVEYS						Out of range
JACK MLEYNEK 5 - KPK WELL - NO SURVEYS						Out of range
JILLSON 0-6-22 - CPR WELL - SURVEYS						Out of range
JILLSON 1 - KPK WELL - NO SURVEYS						Out of range
JILLSON 11-22 - CPR WELL - GYRO						Out of range
JILLSON 12-22 - CPR WELL - GYRO						Out of range
JILLSON 14-22 - CPR WELL - GYRO						Out of range
JILLSON 3 - KPK WELL - NO SURVEYS						Out of range
JILLSON 5 - KPK WELL - NO SURVEYS						Out of range

CC - Min centre to center distance or convergent point, SF - min separation factor, ES - min ellipse separation

# Cathedral Energy Services

## Anticollision Summary Report

<b>Company:</b>	Crestone Peak Resources	<b>Local Co-ordinate Reference:</b>	Well DREAM WEAVER South 3A-21H-N268 - Slot DREAM WEAVER South 3A-21H-N268 SHL
<b>Project:</b>	DJ BASIN	<b>TVD Reference:</b>	23' KB @ 4924.00usft (Original Well Elev)
<b>Reference Site:</b>	S21-T2N-R68W	<b>MD Reference:</b>	23' KB @ 4924.00usft (Original Well Elev)
<b>Site Error:</b>	0.00 usft	<b>North Reference:</b>	True
<b>Reference Well:</b>	DREAM WEAVER South 3A-21H-N268	<b>Survey Calculation Method:</b>	Minimum Curvature
<b>Well Error:</b>	0.00 usft	<b>Output errors are at</b>	2.00 sigma
<b>Reference Wellbore</b>	OH	<b>Database:</b>	USA EDM 5000 Multi Users DB
<b>Reference Design:</b>	PLAN #1	<b>Offset TVD Reference:</b>	Offset Datum

Summary						
Site Name Offset Well - Wellbore - Design	Reference Measured Depth (usft)	Offset Measured Depth (usft)	Distance Between Centres (usft)	Distance Between Ellipses (usft)	Separation Factor	Warning
S21-T2N-R68W (OFFSETS)						
JILLSON A 1 - KPK WELL - NO SURVEYS	100.00	75.99	1,480.65	1,480.45	7,399.548	CC
JILLSON A 1 - KPK WELL - NO SURVEYS	200.00	175.98	1,480.92	1,480.37	2,694.114	ES
JILLSON A 1 - KPK WELL - NO SURVEYS	3,500.00	3,372.44	2,210.65	2,197.92	173.528	SF
JILLSON A 2 - KPK WELL - NO SURVEYS	912.35	874.35	1,684.45	1,681.35	543.219	CC, ES
JILLSON A 2 - KPK WELL - NO SURVEYS	3,800.00	3,661.70	2,219.34	2,204.21	146.658	SF
JILLSON A 3 - KPK WELL - NO SURVEYS						Out of range
JILLSON A 4 - KPK WELL - NO SURVEYS						Out of range
JILLSON-EAST RINN 3A-22H-M268 - CPR WELL - SUR						Out of range
JILLSON-EAST RINN 3B-22H-M268 - CPR WELL - SUR						Out of range
JILLSON-EAST RINN 3C-22H-M268 - CPR WELL - SUR						Out of range
KENNEDY 1 - MACEY & MERSHON WELL - NO SURVE						Out of range
KENNEDY 31-21 - CPR WELL - GYRO						Out of range
KENNEDY 32-21 - CPR WELL - GYRO						Out of range
KENNEDY 41-21 - CPR WELL - GYRO						Out of range
KENNEDY 4-2-21 - CPR WELL - SURVEYS						Out of range
KENNEDY 6-0-21 - CPR WELL - SURVEYS						Out of range
KENNEDY 6-4-21 - CPR WELL - SURVEYS						Out of range
KENNEDY 8-0-21 - CPR WELL - SURVEYS						Out of range
KENNEDY GAS UNIT 1 - CPR WELL - GYRO						Out of range
LONGMONT 8-10K - TOP OPERATING WELL - NO SUR						Out of range
LONGMONT FARMS 1 - KPK WELL - NO SURVEYS						Out of range
LONGMONT FARMS 3 - KPK WELL - NO SURVEYS						Out of range
MAX SERAFINI 1 - KPK WELL - NO SURVEYS						Out of range
MAX SERAFINI C 1 - KPK WELL - NO SURVEYS						Out of range
MILES 1 - KPK WELL - NO SURVEYS						Out of range
MILES 33-3M - KMG WELL - GYRO	15,378.26	7,505.93	1,350.90	1,212.39	9.753	CC, ES
MILES 33-3M - KMG WELL - GYRO	15,400.00	7,505.71	1,351.08	1,212.40	9.743	SF
MILES 4 - KPK WELL - NO SURVEYS						Out of range
MILES 5 - KPK WELL - NO SURVEYS						Out of range
MILES JOSEPHINE 1 - KPK WELL - NO SURVEYS						Out of range
MILES JOSEPHINE 2 - KPK WELL - NO SURVEYS						Out of range
MILES JOSEPHINE B 1 - KPK WELL - NO SURVEYS						Out of range
MILLER 12-27 - CPR WELL - GYRO						Out of range
MILTON NELSON 1 - KPK WELL - NO SURVEYS	1,569.05	1,515.69	748.03	741.95	122.896	CC
MILTON NELSON 1 - KPK WELL - NO SURVEYS	1,600.00	1,545.53	748.08	741.86	120.371	ES
MILTON NELSON 1 - KPK WELL - NO SURVEYS	5,200.00	4,960.00	1,220.90	1,194.82	46.814	SF
MILTON NELSON UN-C 1 - KPK WELL - NO SURVEYS	3,719.68	3,605.73	913.82	895.69	50.392	CC
MILTON NELSON UN-C 1 - KPK WELL - NO SURVEYS	3,800.00	3,671.71	914.07	895.37	48.870	ES
MILTON NELSON UN-C 1 - KPK WELL - NO SURVEYS	5,500.00	5,227.00	1,032.06	1,001.44	33.705	SF
MILTON NELSON UNIT 1 - KPK WELL - NO SURVEYS	100.00	84.00	436.87	436.72	2,848.440	CC
MILTON NELSON UNIT 1 - KPK WELL - NO SURVEYS	100.00	84.00	436.87	436.72	2,848.320	ES
MILTON NELSON UNIT 1 - KPK WELL - NO SURVEYS	5,200.00	4,977.00	1,539.19	1,514.41	62.130	SF
MLEYNEK 28-10M - KMG WELL - GYRO						Out of range
MLEYNEK U 28-10JI - KMG WELL - GYRO						Out of range
MLEYNEK U 28-15JI - KMG WELL - GYRO						Out of range
MORGAN-A 4 - KPK WELL - NO SURVEYS						Out of range
NELSON 42-33 /2-68/ 2 - ANADARKO WELL - NO SURV						Out of range
NELSON DUANE E 41-33 (2-68) 1 - CHAMPLIN PETRO						Out of range
NELSON DUANE E 41-33 (2-68) 1-X - KMG WELL - NO						Out of range
NELSON E UNIT 2 - CPR WELL - GYRO	18,188.71	7,421.49	1,367.96	1,189.83	7.680	CC
NELSON E UNIT 2 - CPR WELL - GYRO	18,200.00	7,421.16	1,368.01	1,189.59	7.667	ES

CC - Min centre to center distance or convergent point, SF - min separation factor, ES - min ellipse separation

# Cathedral Energy Services

## Anticollision Summary Report

<b>Company:</b>	Crestone Peak Resources	<b>Local Co-ordinate Reference:</b>	Well DREAM WEAVER South 3A-21H-N268 - Slot DREAM WEAVER South 3A-21H-N268 SHL
<b>Project:</b>	DJ BASIN	<b>TVD Reference:</b>	23' KB @ 4924.00usft (Original Well Elev)
<b>Reference Site:</b>	S21-T2N-R68W	<b>MD Reference:</b>	23' KB @ 4924.00usft (Original Well Elev)
<b>Site Error:</b>	0.00 usft	<b>North Reference:</b>	True
<b>Reference Well:</b>	DREAM WEAVER South 3A-21H-N268	<b>Survey Calculation Method:</b>	Minimum Curvature
<b>Well Error:</b>	0.00 usft	<b>Output errors are at</b>	2.00 sigma
<b>Reference Wellbore</b>	OH	<b>Database:</b>	USA EDM 5000 Multi Users DB
<b>Reference Design:</b>	PLAN #1	<b>Offset TVD Reference:</b>	Offset Datum

Summary						
Site Name Offset Well - Wellbore - Design	Reference Measured Depth (usft)	Offset Measured Depth (usft)	Distance Between Centres (usft)	Distance Between Ellipses (usft)	Separation Factor	Warning
S21-T2N-R68W (OFFSETS)						
NELSON E UNIT 2 - CPR WELL - GYRO	18,300.00	7,418.19	1,372.48	1,191.97	7.603	SF
NELSON MILTON H 'D' 1 - KMG WELL - GYRO	11,125.81	7,400.96	989.93	917.00	13.574	CC, ES
NELSON MILTON H 'D' 1 - KMG WELL - GYRO	11,300.00	7,401.36	1,005.13	928.70	13.151	SF
NELSON MILTON H 'M' 1 - KMG WELL - GYRO	12,475.71	7,419.45	1,014.38	920.98	10.860	CC
NELSON MILTON H 'M' 1 - KMG WELL - GYRO	12,500.00	7,419.36	1,014.67	920.67	10.794	ES
NELSON MILTON H 'M' 1 - KMG WELL - GYRO	12,600.00	7,418.96	1,021.97	925.95	10.643	SF
NELSON MILTON-F 1 - KPK WELL - NO SURVEYS						Out of range
NORTH RINN 0-4-9 - CPR WELL - SURVEYS						Out of range
NORTH RINN 0-6-9 - CPR WELL - SURVEYS						Out of range
NORTH RINN 0-8-9 - CPR WELL - SURVEYS						Out of range
NORTH RINN 13-9 - CPR WELL - SURVEYS						Out of range
NORTH RINN 14-9 - CPR WELL - SURVEYS						Out of range
NORTH RINN 24-9 - CPR WELL - SURVEYS						Out of range
NORTH RINN 2-4-9 - CPR WELL - SURVEYS						Out of range
NORTH RINN 2-6-9 - CPR WELL - SURVEYS						Out of range
OSKARSON 1 - HRM RES II LLC - NO SURVEYS						Out of range
OSKARSON 2 - ENERVEST OP - NO SURVEYS						Out of range
OSKARSON 24-33 - CPR WELL - GYRO	19,287.83	7,498.69	1,740.21	1,540.75	8.724	CC, ES, SF
OSKARSON 2-8-33 - CPR WELL - SURVEYS	19,287.83	7,601.25	1,212.35	1,011.93	6.049	CC, ES, SF
OSKARSON 3 - HRM RES II LLC - NO SURVEYS						Out of range
OSKARSON-E 1 - CPR WELL - GYRO	18,800.68	7,480.00	693.72	501.68	3.612	CC, ES, SF
OSKARSON-E 2 - CPR WELL - NO SURVEYS						Out of range
RASMUSSEN 3 - PETERSON ENERGY - GYRO						Out of range
RASMUSSEN 1 - PETERSON - GYRO	112.89	144.58	1,692.84	1,692.56	6,130.192	CC, ES
RASMUSSEN 1 - PETERSON - GYRO	3,500.00	3,422.45	2,236.37	2,222.24	158.203	SF
RASMUSSEN 11-28 - CPR WELL - SURVEYS	9,665.84	7,745.66	523.29	450.29	7.168	CC, ES
RASMUSSEN 11-28 - CPR WELL - SURVEYS	9,700.00	7,745.58	524.40	450.62	7.107	SF
RASMUSSEN 12-28 - CPR WELL - SURVEYS	11,175.58	7,543.03	426.81	347.91	5.409	CC, ES, SF
RASMUSSEN 2 - PETERSON ENERGY - NO SURVEYS						Out of range
RASMUSSEN 21-28 - CPR WELL - GYRO	9,739.27	7,411.63	1,568.63	1,515.31	29.423	CC, ES
RASMUSSEN 21-28 - CPR WELL - GYRO	10,000.00	7,410.81	1,590.15	1,535.03	28.850	SF
RASMUSSEN 22-28 - CPR WELL - GYRO	11,077.81	7,462.33	1,465.49	1,393.00	20.218	CC
RASMUSSEN 22-28 - CPR WELL - GYRO	11,100.00	7,462.46	1,465.65	1,392.99	20.171	ES
RASMUSSEN 22-28 - CPR WELL - GYRO	11,200.00	7,463.05	1,470.57	1,397.24	20.054	SF
RASMUSSEN 2-4-28 - CPR WELL - SURVEYS	11,696.14	7,460.94	1,087.89	1,000.18	12.402	CC
RASMUSSEN 2-4-28 - CPR WELL - SURVEYS	11,700.00	7,460.79	1,087.90	1,000.17	12.401	ES, SF
RASMUSSEN 31-28 - CPR WELL - GYRO	118.06	154.10	2,210.37	2,210.10	8,279.252	CC
RASMUSSEN 31-28 - CPR WELL - GYRO	200.00	242.13	2,210.38	2,209.81	3,896.749	ES
RASMUSSEN 31-28 - CPR WELL - GYRO	500.00	544.14	2,235.12	2,233.46	1,343.993	SF
RASMUSSEN 32-28 32-28 - CPR WELL - GYRO						Out of range
RASMUSSEN 4-0-28 - CPR WELL - SURVEYS						Out of range
RASMUSSEN 41-28 - CPR WELL - GYRO						Out of range
RASMUSSEN 42-28 - CPR WELL - SURVEYS						Out of range
RASMUSSEN 4-2-28 - CPR WELL - SURVEYS						Out of range
RASMUSSEN 4-4-28 - CPR WELL - SURVEYS						Out of range
RASMUSSEN 44-29 - KPK WELL - NO SURVEYS						Out of range
RASMUSSEN 4-A - PETERSON ENERGY - GYRO	0.00	0.00	2,044.96			
RASMUSSEN 4-A - PETERSON ENERGY - GYRO	100.00	86.82	2,045.03	2,044.89	10,000.000	ES
RASMUSSEN 4-A - PETERSON ENERGY - GYRO	4,700.00	4,527.97	2,233.01	2,209.99	96.986	SF
RASMUSSEN C" 2" - CPR WELL - GYRO						Out of range
RASMUSSEN-C-UNIT 1 - CPR WELL - GYRO	10,256.05	7,409.61	618.22	557.97	10.260	CC, ES, SF

CC - Min centre to center distance or convergent point, SF - min separation factor, ES - min ellipse separation



# Cathedral Energy Services

## Anticollision Summary Report

<b>Company:</b>	Crestone Peak Resources	<b>Local Co-ordinate Reference:</b>	Well DREAM WEAVER South 3A-21H-N268 - Slot DREAM WEAVER South 3A-21H-N268 SHL
<b>Project:</b>	DJ BASIN	<b>TVD Reference:</b>	23' KB @ 4924.00usft (Original Well Elev)
<b>Reference Site:</b>	S21-T2N-R68W	<b>MD Reference:</b>	23' KB @ 4924.00usft (Original Well Elev)
<b>Site Error:</b>	0.00 usft	<b>North Reference:</b>	True
<b>Reference Well:</b>	DREAM WEAVER South 3A-21H-N268	<b>Survey Calculation Method:</b>	Minimum Curvature
<b>Well Error:</b>	0.00 usft	<b>Output errors are at</b>	2.00 sigma
<b>Reference Wellbore</b>	OH	<b>Database:</b>	USA EDM 5000 Multi Users DB
<b>Reference Design:</b>	PLAN #1	<b>Offset TVD Reference:</b>	Offset Datum

Summary						
Site Name	Reference Measured Depth (usft)	Offset Measured Depth (usft)	Distance Between Centres (usft)	Distance Between Ellipses (usft)	Separation Factor	Warning
S21-T2N-R68W (OFFSETS)						
RODGERS 1 - KPK WELL - NO SURVEYS						Out of range
SAUNDERS TRUST 8-2K8 - EXTRACTION WELL - NO						Out of range
SCHLAGEL 2 - EXTRACTION WELL - NO SURVEYS						Out of range
SERAFINI E MAX GU 1 - KMG WELL - GYRO						Out of range
SERAFINI-B 2 - KPK WELL - NO SURVEYS						Out of range
SHAW 1 - KPK WELL - NO SURVEYS						Out of range
SHAW 15-20 - KPK - SURVEYS						Out of range
SHAW 16-20 - KPK - SURVEYS	5,336.72	5,070.00	1,705.73	1,667.94	45.130	CC, ES
SHAW 16-20 - KPK - SURVEYS	5,500.00	5,070.00	1,713.53	1,675.30	44.820	SF
STROMQUIST 1 - KPK WELL - NO SURVEYS	5,506.78	4,940.00	1,451.66	1,425.41	55.301	CC, ES
STROMQUIST 1 - KPK WELL - NO SURVEYS	5,700.00	4,940.00	1,464.46	1,437.55	54.427	SF
STROMQUIST 11-21 - KMG WELL - GYRO	1,543.50	1,515.51	768.49	763.18	144.661	CC, ES
STROMQUIST 11-21 - KMG WELL - GYRO	6,900.00	6,653.57	1,720.21	1,687.40	52.420	SF
STROMQUIST 13-21 - KMG WELL - GYRO	8,555.22	7,421.90	685.14	645.69	17.365	CC, ES
STROMQUIST 13-21 - KMG WELL - GYRO	8,600.00	7,421.72	686.60	647.00	17.339	SF
STROMQUIST 22-21 - KMG WELL - SURVEYS	1,327.87	1,261.58	799.26	795.12	193.010	CC, ES
STROMQUIST 22-21 - KMG WELL - SURVEYS	6,600.00	6,457.65	1,167.88	1,122.36	25.657	SF
STROMQUIST 23-21 - KMG WELL - SURVEYS	108.85	96.87	456.49	456.21	1,598.588	CC
STROMQUIST 23-21 - KMG WELL - SURVEYS	200.00	188.98	456.81	456.17	714.532	ES
STROMQUIST 23-21 - KMG WELL - SURVEYS	8,300.00	7,430.26	2,235.08	2,196.73	58.288	SF
STROMQUIST 34-21 - KMG WELL - SURVEYS	9,015.08	7,495.15	123.37	74.04	2.501	CC, ES, SF
STROMQUIST 35-21 - KMG WELL - SURVEYS	108.65	97.72	479.19	478.91	1,722.967	CC
STROMQUIST 35-21 - KMG WELL - SURVEYS	200.00	190.25	479.51	478.86	738.312	ES
STROMQUIST 35-21 - KMG WELL - SURVEYS	9,100.00	7,491.01	1,159.91	1,109.19	22.870	SF
TRAVELERS 28-11M - KMG WELL - GYRO	12,847.18	7,446.58	1,089.47	990.33	10.989	CC, ES
TRAVELERS 28-11M - KMG WELL - GYRO	12,900.00	7,447.05	1,090.75	991.39	10.977	SF
TRAVELERS U 28-13DI - KMG WELL - GYRO	13,742.37	7,433.38	341.52	228.87	3.032	CC, ES, SF
UPRC 33-1M - KMG WELL - GYRO						Out of range
UPRR 43 PAN AM-B 7 - KPK WELL - NO SURVEYS						Out of range
WESTERN 3-21A - KMG WELL - GYRO						Out of range
WILDFLOWER 12-27 - KMG WELL - SURVEYS						Out of range
WILDFLOWER 33-27 - KMG WELL - SURVEYS						Out of range
WOOLEY UNIT 1 - KPK WELL - NO SURVEYS						Out of range



# Cathedral Energy Services

## Anticollision Summary Report

<b>Company:</b>	Crestone Peak Resources	<b>Local Co-ordinate Reference:</b>	Well DREAM WEAVER South 3A-21H-N268 - Slot DREAM WEAVER South 3A-21H-N268 SHL
<b>Project:</b>	DJ BASIN	<b>TVD Reference:</b>	23' KB @ 4924.00usft (Original Well Elev)
<b>Reference Site:</b>	S21-T2N-R68W	<b>MD Reference:</b>	23' KB @ 4924.00usft (Original Well Elev)
<b>Site Error:</b>	0.00 usft	<b>North Reference:</b>	True
<b>Reference Well:</b>	DREAM WEAVER South 3A-21H-N268	<b>Survey Calculation Method:</b>	Minimum Curvature
<b>Well Error:</b>	0.00 usft	<b>Output errors are at</b>	2.00 sigma
<b>Reference Wellbore</b>	OH	<b>Database:</b>	USA EDM 5000 Multi Users DB
<b>Reference Design:</b>	PLAN #1	<b>Offset TVD Reference:</b>	Offset Datum

Summary						
Site Name Offset Well - Wellbore - Design	Reference Measured Depth (usft)	Offset Measured Depth (usft)	Distance Between Centres (usft)	Distance Between Ellipses (usft)	Separation Factor	Warning
S32-T2N-R68W						
Anderson 22-32 - KPK WELL - NO SURVEYS						Out of range
Anderson 32-32 - CPR WELL - SURVEYS						Out of range
Anderson 41-32 - CPR - GYRO	14,919.91	7,360.22	784.01	652.89	5.980	CC, ES
Anderson 41-32 - CPR - GYRO	15,000.00	7,359.14	788.09	655.32	5.936	SF
Anderson 4-2-32 - CPR WELL - SURVEYS						Out of range
Anderson 6-4-32 - CPR WELL - SURVEYS	16,944.79	7,660.99	1,643.55	1,464.14	9.161	CC
Anderson 6-4-32 - CPR WELL - SURVEYS	17,000.00	7,661.04	1,644.48	1,463.75	9.099	ES
Anderson 6-4-32 - CPR WELL - SURVEYS	17,100.00	7,661.12	1,650.87	1,468.24	9.040	SF
Anderson Trust 1 - KPK - NO SURVEYS						Out of range
Anderson Trust 1 A - CPR WELL - GYRO						Out of range
Anderson Trust 2-A - CPR WELL - NO SURVEYS						Out of range
Anderson Trust 32-2 - CPR WELL - GYRO						Out of range
Anderson Trust 32-8 - CPR WELL - GYRO	16,469.73	7,419.18	1,123.34	967.80	7.222	CC
Anderson Trust 32-8 - CPR WELL - GYRO	16,500.00	7,418.77	1,123.74	967.52	7.193	ES
Anderson Trust 32-8 - CPR WELL - GYRO	16,600.00	7,417.46	1,130.86	973.07	7.167	SF
Anderson Trust C 1 - CPR WELL - SURVEYS	15,422.44	7,412.14	1,376.72	1,242.50	10.257	CC, ES
Anderson Trust C 1 - CPR WELL - SURVEYS	15,600.00	7,414.08	1,388.12	1,250.96	10.121	SF
Anderson Trust C Unit 2 - CPR WELL - GYRO						Out of range
Brown 22-5 - CPR WELL - GYRO						Out of range
Brown 31-5 - CPR WELL - SURVEYS						Out of range
Brown 41-5 - CPR WELL - SURVEYS	19,287.83	7,745.83	1,489.48	1,336.33	9.725	CC, ES, SF
Brown 5-3 - CPR WELL - GYRO						Out of range
Brown 5-5 - CPR WELL - GYRO						Out of range
Brown C Unit 1 - CPR WELL - GYRO						Out of range
Brown C Unit 2 - CPR WELL - GYRO						Out of range
Bryant 10-30 - KMG WELL - SURVEYS						Out of range
Bryant 16-30 - KMG WELL - SURVEYS						Out of range
Bryant 20-30 - KMG WELL - SURVEYS						Out of range
Bryant 23-30 - KMG WELL - SURVEYS						Out of range
Bryant 24-30 - KMG WELL - SURVEYS						Out of range
Bryant 33-29 - KMG WELL - SURVEYS						Out of range
Bryant 36-30 - KMG WELL - SURVEYS						Out of range
Bryant 8-30 - KMG WELL - SURVEYS						Out of range
Bryant Federal 37-30 - KMG WELL - SURVEYS						Out of range
Bulthaup 1-6 - KMG WELL - GYRO						Out of range
Bulthaup 16-6 - KMG WELL - SURVEYS						Out of range
Bulthaup 17-6 - KMG WELL - SURVEYS						Out of range
Bulthaup 24-6 - KMG WELL - SURVEYS						Out of range
Bulthaup 27-6 - KMG WELL - SURVEYS						Out of range
Bulthaup 39-6 - KMG WELL - SURVEYS						Out of range
Bulthaup 40-6 - KMG WELL - SURVEYS						Out of range
Bulthaup 8-6 - KMG WELL - GYRO						Out of range
Bulthaup 9-6 - KMG WELL - SURVEYS						Out of range
Canino 1-X - HUGHES CW - NO SURVEYS						Out of range
Champlin 86 Amoco F 6 - KPK - NO SURVEYS						Out of range
Champlin 86 N 1 - KMG WELL - GYRO						Out of range
Champlin Amoco 86 F 7 - KPK WELL - SURVEYS						Out of range
Cinque 1 - FOUNDATION WELL - NO SURVEYS						Out of range
Cinque 2 - FOUNDATION WELL - NO SURVEYS						Out of range
Cinque 4 - FOUNDATION WELL - NO SURVEYS						Out of range
FILE 3A-32H-K268 - OH - FINAL						Out of range

CC - Min centre to center distance or convergent point, SF - min separation factor, ES - min ellipse separation

# Cathedral Energy Services

## Anticollision Summary Report

<b>Company:</b>	Crestone Peak Resources	<b>Local Co-ordinate Reference:</b>	Well DREAM WEAVER South 3A-21H-N268 - Slot DREAM WEAVER South 3A-21H-N268 SHL
<b>Project:</b>	DJ BASIN	<b>TVD Reference:</b>	23' KB @ 4924.00usft (Original Well Elev)
<b>Reference Site:</b>	S21-T2N-R68W	<b>MD Reference:</b>	23' KB @ 4924.00usft (Original Well Elev)
<b>Site Error:</b>	0.00 usft	<b>North Reference:</b>	True
<b>Reference Well:</b>	DREAM WEAVER South 3A-21H-N268	<b>Survey Calculation Method:</b>	Minimum Curvature
<b>Well Error:</b>	0.00 usft	<b>Output errors are at</b>	2.00 sigma
<b>Reference Wellbore</b>	OH	<b>Database:</b>	USA EDM 5000 Multi Users DB
<b>Reference Design:</b>	PLAN #1	<b>Offset TVD Reference:</b>	Offset Datum

Summary						
Site Name	Reference Measured Depth (usft)	Offset Measured Depth (usft)	Distance Between Centres (usft)	Distance Between Ellipses (usft)	Separation Factor	Warning
<b>Offset Well - Wellbore - Design</b>						
S32-T2N-R68W						
FILE 3B-32H-K268 - OH - FINAL						Out of range
FILE 3C-32H-K268 - OH - FINAL						Out of range
FILE 3D-32H-K268 - OH - FINAL						Out of range
FILE 3E-32H-K268 - OH - FINAL						Out of range
FILE 3F-32H-K268 - OH - FINAL						Out of range
FILE 3G-32H-K268 - OH - FINAL						Out of range
FILE 3H-32H-K268 - OH - FINAL						Out of range
FILE 3Q-32H-K268 - OH - FINAL						Out of range
FILE 3R-32H-K268 - OH - FINAL						Out of range
FILE 3S-32H-K268 - OH - FINAL						Out of range
FILE 3T-32H-K268 - OH - FINAL						Out of range
FILE FED 3I-32H-K268 - OH - FINAL						Out of range
FILE FED 3J-32H-K268 - OH - FINAL						Out of range
FILE FED 3K-32H-K268 - OH - FINAL						Out of range
FILE FED 3K-32H-K268 - OH - PLAN #4						Out of range
FILE FED 3L-32H-K268 - OH - FINAL						Out of range
FILE FED 3M-32H-K268 - OH - FINAL						Out of range
FILE FED 3N-32H-K268 - OH - FINAL						Out of range
FILE FED 3O-32H-K268 - OH - FINAL						Out of range
FILE FED 3P-32H-K268 - OH - FINAL						Out of range
Foster 33-5 - CPR WELL - SURVEYS						Out of range
Foster 43-5 - CPR WELL - SURVEYS						Out of range
Foster 4-5 - CPR WELL - SURVEYS						Out of range
Foster 4-6-5 - CPR WELL - SURVEYS						Out of range
Foster 6-4-5 - CPR - SURVEYS						Out of range
Foster 6-4-5X - CPR WELL - SURVEYS						Out of range
Foster 6-8-5 - CPR WELL - SURVEYS						Out of range
Foster 8-8-5 - CPR WELL - SURVEYS						Out of range
Foster E Unit 1 - CPR - GYRO						Out of range
Gene 11-5 - KERR-MCGEE - GYRO						Out of range
Hankins 1 - KPK WELL - NO SURVEYS						Out of range
Hauck 17-29 - KMG WELL - SURVEYS	10,276.77	7,568.69	1,557.79	1,486.66	21.902	CC
Hauck 17-29 - KMG WELL - SURVEYS	10,300.00	7,568.75	1,557.96	1,486.28	21.736	ES
Hauck 17-29 - KMG WELL - SURVEYS	10,800.00	7,570.14	1,643.31	1,562.24	20.271	SF
Hauck 24-29 - KMG WELL - SURVEYS	11,634.07	7,491.24	1,521.80	1,436.22	17.782	CC, ES
Hauck 24-29 - KMG WELL - SURVEYS	11,900.00	7,491.46	1,544.87	1,454.95	17.182	SF
Hauck 7-29 - KMG WELL - SURVEYS						Out of range
HSR-Bryant 9-30A - KMG WELL - GYRO						Out of range
HSR-Williams 10-20 - KMG WELL - GYRO	7,671.22	7,264.26	1,899.22	1,866.64	58.296	CC, ES
HSR-Williams 10-20 - KMG WELL - GYRO	8,500.00	7,370.51	2,144.12	2,105.88	56.070	SF
HWY52 4A-32H-O268 - OH - FINAL						Out of range
HWY52 4B-32H-O268 - OH - FINAL						Out of range
HWY52 4C-32H-O268 - OH - FINAL						Out of range
HWY52 4D-32H-O268 - OH - FINAL	18,798.68	7,730.34	1,831.38	1,630.32	9.109	CC
HWY52 4D-32H-O268 - OH - FINAL	18,800.00	7,730.88	1,831.38	1,630.29	9.108	ES
HWY52 4D-32H-O268 - OH - FINAL	19,000.00	7,815.00	1,841.37	1,636.94	9.007	SF
HWY52 4E-32H-O268 - OH - FINAL	18,923.55	7,638.85	1,681.96	1,479.74	8.318	CC
HWY52 4E-32H-O268 - OH - FINAL	19,000.00	7,711.44	1,682.98	1,479.17	8.257	ES
HWY52 4E-32H-O268 - OH - FINAL	19,100.00	7,776.59	1,698.46	1,492.45	8.245	SF
HWY52 4F-32H-O268 - OH - FINAL	18,928.46	7,806.05	1,364.89	1,161.66	6.716	CC
HWY52 4F-32H-O268 - OH - FINAL	19,000.00	7,872.00	1,365.66	1,161.02	6.673	ES, SF

CC - Min centre to center distance or convergent point, SF - min separation factor, ES - min ellipse separation

# Cathedral Energy Services

## Anticollision Summary Report

<b>Company:</b>	Crestone Peak Resources	<b>Local Co-ordinate Reference:</b>	Well DREAM WEAVER South 3A-21H-N268 - Slot DREAM WEAVER South 3A-21H-N268 SHL
<b>Project:</b>	DJ BASIN	<b>TVD Reference:</b>	23' KB @ 4924.00usft (Original Well Elev)
<b>Reference Site:</b>	S21-T2N-R68W	<b>MD Reference:</b>	23' KB @ 4924.00usft (Original Well Elev)
<b>Site Error:</b>	0.00 usft	<b>North Reference:</b>	True
<b>Reference Well:</b>	DREAM WEAVER South 3A-21H-N268	<b>Survey Calculation Method:</b>	Minimum Curvature
<b>Well Error:</b>	0.00 usft	<b>Output errors are at</b>	2.00 sigma
<b>Reference Wellbore</b>	OH	<b>Database:</b>	USA EDM 5000 Multi Users DB
<b>Reference Design:</b>	PLAN #1	<b>Offset TVD Reference:</b>	Offset Datum

Summary						
Site Name Offset Well - Wellbore - Design	Reference Measured Depth (usft)	Offset Measured Depth (usft)	Distance Between Centres (usft)	Distance Between Ellipses (usft)	Separation Factor	Warning
S32-T2N-R68W						
HWY52 4G-32H-O268 - OH - FINAL	18,703.02	7,710.95	1,157.46	957.01	5.774	CC
HWY52 4G-32H-O268 - OH - FINAL	19,000.00	8,101.40	1,157.91	954.62	5.696	ES, SF
HWY52 4H-32H-O268 - OH - FINAL	19,024.10	7,878.75	859.25	656.24	4.233	CC, ES
HWY52 4H-32H-O268 - OH - FINAL	19,100.00	7,933.96	864.30	658.84	4.207	SF
HWY52 4I-32H-O268 - OH - FINAL	19,000.00	7,926.74	698.12	492.82	3.400	CC, ES, SF
HWY52 4J-32H-O268 - OH - FINAL	18,941.71	8,028.75	394.99	194.52	1.970	CC, ES, SF
HWY52 4K-32H-O268 - OH - FINAL	19,056.76	8,022.50	251.73	55.25	1.281	Level 3, CC
HWY52 4K-32H-O268 - OH - FINAL	19,100.00	8,060.73	253.57	53.42	1.267	Level 3, ES, SF
HWY52 4L-32H-O268 - OH - FINAL						Out of range
HWY52 4M-32H-O268 - OH - FINAL						Out of range
HWY52 4N-32H-O268 - OH - FINAL						Out of range
HWY52 4O-32H-O268 - OH - FINAL	17,500.00	17,500.00	2,055.51	1,755.84	6.859	ES, SF
HWY52 4O-32H-O268 - OH - FINAL	18,943.35	7,940.46	2,020.77	1,817.32	9.933	CC
HWY52 4P-32H-O268 - OH - FINAL	18,078.14	8,846.36	1,902.83	1,704.41	9.590	CC
HWY52 4P-32H-O268 - OH - FINAL	18,100.00	8,835.31	1,902.90	1,704.19	9.577	ES
HWY52 4P-32H-O268 - OH - FINAL	19,100.00	7,770.50	1,932.92	1,727.03	9.388	SF
HWY52 4Q-32H-O268 - OH - FINAL	17,074.02	9,691.07	1,538.16	1,344.01	7.922	CC
HWY52 4Q-32H-O268 - OH - FINAL	17,100.00	9,669.03	1,538.19	1,343.90	7.917	ES
HWY52 4Q-32H-O268 - OH - FINAL	19,000.00	7,833.29	1,589.30	1,383.99	7.741	SF
HWY52 4R-32H-O268 - OH - FINAL	18,944.80	7,943.00	1,244.77	1,040.93	6.107	CC
HWY52 4R-32H-O268 - OH - FINAL	19,000.00	7,923.47	1,245.54	1,040.47	6.074	ES, SF
HWY52 4S-32H-O268 - OH - FINAL	16,341.36	10,726.56	1,039.01	847.92	5.437	CC
HWY52 4S-32H-O268 - OH - FINAL	16,400.00	10,679.73	1,039.33	847.83	5.428	ES
HWY52 4S-32H-O268 - OH - FINAL	19,000.00	8,084.09	1,069.16	864.84	5.233	SF
HWY52 4T-32H-O268 - OH - FINAL	18,633.83	8,247.48	946.30	744.61	4.692	CC
HWY52 4T-32H-O268 - OH - FINAL	18,700.00	8,191.95	946.67	744.21	4.676	ES
HWY52 4T-32H-O268 - OH - FINAL	18,900.00	8,019.37	952.30	747.64	4.653	SF
HWY52 4U-32H-O268 - OH - FINAL	18,716.17	8,155.32	586.91	384.92	2.906	CC
HWY52 4U-32H-O268 - OH - FINAL	18,900.00	7,988.81	589.27	384.49	2.878	ES, SF
HWY52 4V-32H-O268 - OH - FINAL	18,360.95	8,620.44	506.66	306.44	2.531	CC
HWY52 4V-32H-O268 - OH - FINAL	18,800.00	8,183.11	508.82	304.86	2.495	ES
HWY52 4V-32H-O268 - OH - FINAL	18,900.00	8,093.18	510.95	305.81	2.491	SF
HWY52 4W-32H-O268 - OH - FINAL	18,947.03	8,004.43	178.64	-13.83	0.928	Level 1, CC
HWY52 4W-32H-O268 - OH - FINAL	19,000.00	7,957.59	180.57	-20.68	0.897	Level 1, ES, SF
Jack Hein Unit 1 - HS RESOURCES WELL - NO SURVE						Out of range
John Lamar 1 - KPK WELL - NO SURVEYS						Out of range
Johnson 32-30 - KPK WELL - NO SURVEYS						Out of range
Johnson 7-30A - KMG WELL - GYRO						Out of range
Kenneth Koch 1 - KPK WELL - NO SURVEYS						Out of range
Kenyon 34-19 - CPR WELL - SURVEYS						Out of range
Kenyon 4-8-19 - CPR WELL - SURVEYS						Out of range
Kenyon 8-4-19 - CPR WELL - SURVEYS						Out of range
Kenyon 8-6-19 - CPR WELL - SURVEYS						Out of range
Kenyon 8-8-19 - CPR WELL - SURVEYS						Out of range
Koch 41-6 - KPK WELL - NO SURVEYS						Out of range
Koch Kenneth E A-1 - KMG WELL - SURVEY						Out of range
Milton H Nelson H-1 - KMG WELL - GYRO						Out of range
Milton H Nelson I1 - KMG WELL - GYRO						Out of range
Milton H Nelson L1 - KMG WELL - GYRO						Out of range
Milton Nelson K1 - KMG WELL - GYRO						Out of range
Nelson 1 - TEXAS TEA - NO SURVEYS						Out of range

CC - Min centre to center distance or convergent point, SF - min separation factor, ES - min ellipse separation

# Cathedral Energy Services

## Anticollision Summary Report

<b>Company:</b>	Crestone Peak Resources	<b>Local Co-ordinate Reference:</b>	Well DREAM WEAVER South 3A-21H-N268 - Slot DREAM WEAVER South 3A-21H-N268 SHL
<b>Project:</b>	DJ BASIN	<b>TVD Reference:</b>	23' KB @ 4924.00usft (Original Well Elev)
<b>Reference Site:</b>	S21-T2N-R68W	<b>MD Reference:</b>	23' KB @ 4924.00usft (Original Well Elev)
<b>Site Error:</b>	0.00 usft	<b>North Reference:</b>	True
<b>Reference Well:</b>	DREAM WEAVER South 3A-21H-N268	<b>Survey Calculation Method:</b>	Minimum Curvature
<b>Well Error:</b>	0.00 usft	<b>Output errors are at</b>	2.00 sigma
<b>Reference Wellbore</b>	OH	<b>Database:</b>	USA EDM 5000 Multi Users DB
<b>Reference Design:</b>	PLAN #1	<b>Offset TVD Reference:</b>	Offset Datum

Summary						
Site Name	Reference Measured Depth (usft)	Offset Measured Depth (usft)	Distance Between Centres (usft)	Distance Between Ellipses (usft)	Separation Factor	Warning
Offset Well - Wellbore - Design						
S32-T2N-R68W						
Nelson 1-A - TEXAS TEA WELL - NO SURVEYS						Out of range
Nelson 2 - TEXAS TEA WELL - NO SURVEYS						Out of range
Nelson 3 - TEXAS TEA WELL - NO SURVEYS						Out of range
Nelson 4 - TEXAS TEA WELL - NO SURVEYS						Out of range
Nelson 5 - TEXAS TEA WELL - NO SURVEYS						Out of range
Nelson D2 - KPK WELL - NO SURVEYS						Out of range
Nelson E Unit 1 - CPR WELL - GYRO						Out of range
Nelson E Unit 2 - CPR WELL - GYRO	18,188.97	7,412.25	1,367.78	1,189.66	7.679	CC
Nelson E Unit 2 - CPR WELL - GYRO	18,200.00	7,411.92	1,367.82	1,189.42	7.667	ES
Nelson E Unit 2 - CPR WELL - GYRO	18,300.00	7,408.92	1,372.28	1,191.78	7.603	SF
NOAA Federal 11-32 - CPR WELL - GYRO						Out of range
Osarkson 2-8-33 - CPR WELL - SURVEYS	19,287.83	7,601.26	1,212.96	1,004.33	5.814	CC, ES, SF
Oskarson 13-33 - CPR - GYRO	17,831.89	7,489.08	198.58	21.57	1.122	Level 2, CC, ES, SF
Oskarson 23-33 - CPR WELL - GYRO	17,517.41	7,528.27	1,745.29	1,578.33	10.453	CC, ES
Oskarson 23-33 - CPR WELL - GYRO	17,600.00	7,526.59	1,747.25	1,579.83	10.436	SF
Oskarson 4 - HRM - NO SURVEYS						Out of range
Oskarson 4-4-33 - CPR WELL - SURVEYS						Out of range
Oskarson 4-6-33 - CPR WELL - SURVEYS						Out of range
Oskarson 4-8-33 - CPR WELL - SURVEYS						Out of range
Oskarson E Unit 1 - CPR WELL - GYRO	18,806.10	7,469.82	694.52	506.77	3.699	CC, ES, SF
Paquette 13-5 - KMG WELL - GYRO						Out of range
Paquette 14-5 - KERR-MCGEE - GYRO						Out of range
Rasmussen 10-29 - KMG WELL - SURVEYS	12,383.24	7,646.83	2,199.65	2,089.23	19.921	CC
Rasmussen 10-29 - KMG WELL - SURVEYS	12,400.00	7,646.93	2,199.71	2,088.96	19.862	ES
Rasmussen 10-29 - KMG WELL - SURVEYS	12,700.00	7,648.73	2,222.34	2,106.43	19.173	SF
Rasmussen 14-29 - KMG WELL - SURVEYS						Out of range
Rasmussen 16-29 - KMG WELL - SURVEYS	13,644.92	7,582.50	937.19	811.12	7.434	CC, ES
Rasmussen 16-29 - KMG WELL - SURVEYS	13,800.00	7,588.70	949.91	820.96	7.367	SF
Rasmussen 19-29 - KMG WELL - SURVEYS						Out of range
Rasmussen 20-29 - KMG WELL - SURVEYS	13,056.78	7,550.26	1,550.64	1,433.80	13.271	CC
Rasmussen 20-29 - KMG WELL - SURVEYS	13,100.00	7,549.96	1,551.24	1,433.40	13.163	ES
Rasmussen 20-29 - KMG WELL - SURVEYS	13,400.00	7,547.89	1,585.16	1,462.18	12.889	SF
Rasmussen 22-29 - KMG WELL - SURVEYS						Out of range
Rasmussen 23-29 - KMG WELL - SURVEYS						Out of range
Rasmussen 25-29 - KMG WELL - SURVEYS						Out of range
Rasmussen 36-29 - KMG WELL - SURVEYS						Out of range
Rasmussen 37-29 - KMG WELL - SURVEYS	14,353.78	7,606.39	1,434.21	1,296.17	10.390	CC
Rasmussen 37-29 - KMG WELL - SURVEYS	14,400.00	7,605.90	1,434.96	1,296.07	10.332	ES
Rasmussen 37-29 - KMG WELL - SURVEYS	14,500.00	7,604.81	1,441.65	1,301.30	10.272	SF
Rasmussen 39-29 - KMG WELL - SURVEYS	13,108.69	7,824.79	303.74	183.38	2.524	CC, ES, SF
Rasmussen Fed 35-29 - KMG WELL - SURVEYS						Out of range
Ray Nelson 0-4-32 - CPR WELL - SURVEYS						Out of range
Ray Nelson 12-32 - CPR WELL - GYRO						Out of range
Ray Nelson 13-32 - CPR WELL - SURVEYS						Out of range
Ray Nelson 14-32 - CPR WELL - SURVEYS						Out of range
Ray Nelson 23-32 - CPR WELL - GYRO						Out of range
Ray Nelson 24-32 - CPR WELL - SURVEYS						Out of range
Ray Nelson 2-4-32 - CPR WELL - SURVEYS						Out of range
Ray Nelson 33-32 - CPR WELL - SURVEYS	17,582.94	7,665.79	2,144.48	1,957.86	11.491	CC
Ray Nelson 33-32 - CPR WELL - SURVEYS	17,600.00	7,665.61	2,144.55	1,957.62	11.472	ES
Ray Nelson 33-32 - CPR WELL - SURVEYS	17,800.00	7,663.60	2,155.44	1,965.70	11.360	SF

CC - Min centre to center distance or convergent point, SF - min separation factor, ES - min ellipse separation

# Cathedral Energy Services

## Anticollision Summary Report

<b>Company:</b>	Crestone Peak Resources	<b>Local Co-ordinate Reference:</b>	Well DREAM WEAVER South 3A-21H-N268 - Slot DREAM WEAVER South 3A-21H-N268 SHL
<b>Project:</b>	DJ BASIN	<b>TVD Reference:</b>	23' KB @ 4924.00usft (Original Well Elev)
<b>Reference Site:</b>	S21-T2N-R68W	<b>MD Reference:</b>	23' KB @ 4924.00usft (Original Well Elev)
<b>Site Error:</b>	0.00 usft	<b>North Reference:</b>	True
<b>Reference Well:</b>	DREAM WEAVER South 3A-21H-N268	<b>Survey Calculation Method:</b>	Minimum Curvature
<b>Well Error:</b>	0.00 usft	<b>Output errors are at</b>	2.00 sigma
<b>Reference Wellbore</b>	OH	<b>Database:</b>	USA EDM 5000 Multi Users DB
<b>Reference Design:</b>	PLAN #1	<b>Offset TVD Reference:</b>	Offset Datum

Summary						
Site Name	Reference Measured Depth (usft)	Offset Measured Depth (usft)	Distance Between Centres (usft)	Distance Between Ellipses (usft)	Separation Factor	Warning
S32-T2N-R68W						
Ray Nelson 34-32 - CPR WELL - SURVEYS						Out of range
Ray Nelson 44-32 - CPR WELL - SURVEYS	18,906.24	7,604.99	789.21	595.45	4.073	CC, ES, SF
Ray Nelson 4-4-32 - CPR WELL - SURVEYS						Out of range
Ray Nelson 4-6-32 - CPR WELL - SURVEYS						Out of range
Ray Nelson 8-8-32 - CPR WELL - SURVEYS	19,287.83	7,772.57	531.09	378.13	3.472	CC, ES, SF
Regnier Farms 32-19 - CPR WELL - GYRO						Out of range
Regnier Farms 33-19 - CPR WELL - GYRO						Out of range
Regnier Farms 42-19 - CPR WELL - GYRO						Out of range
Regnier Farms 43-19 - CPR WELL - SURVEYS						Out of range
Regnier Farms B 2 - CPR WELL - GYRO						Out of range
Regnier Farms B Unit 1 - CPR WELL - GYRO						Out of range
Sawdey Unit 2 - KMG WELL - GYRO						Out of range
Schriner 11-5 - KMG WELL - GYRO						Out of range
Schriner 12-5 - KMG WELL - GYRO						Out of range
SEC Four 12-4 - KMG WELL - SURVEYS						Out of range
SEC Four 13-4 - KMG WELL - SURVEYS						Out of range
SEC Four 14-4 - KMG WELL - SURVEYS						Out of range
SEC Four 21-4 - KMG WELL - SURVEYS						Out of range
SEC Four 22-4 - KMG WELL - SURVEYS						Out of range
SEC Four 31-4 - KMG WELL - SURVEYS	19,287.83	7,659.26	1,778.22	1,717.10	29.094	CC, ES, SF
SEC Four 32-4 - KMG WELL - SURVEYS						Out of range
SEC Four 33-4 - KMG WELL - SURVEYS						Out of range
SEC Four 3-4 - KMG WELL - SURVEYS	19,287.83	7,655.47	2,014.02	1,831.07	11.008	CC, ES, SF
SEC Four 35-4 - KMG WELL - SURVEYS						Out of range
SEC Four 4-4 - KMG WELL - SURVEYS	19,287.83	7,610.78	1,275.36	1,178.49	13.165	CC, ES, SF
SEC Four 5-4 - KMG WELL - SURVEYS						Out of range
SEC Four 6-4 - KMG WELL - SURVEYS						Out of range
Shaw 11-29A - KMG WELL - SURVEYS						Out of range
Shaw 12-29A - KMG - GYRO						Out of range
Shaw 15-20 - KPK - SURVEYS						Out of range
Shaw 16-20 - KPK - SURVEYS	5,327.95	5,070.00	1,697.28	1,659.25	44.637	CC, ES
Shaw 16-20 - KPK - SURVEYS	5,500.00	5,070.00	1,705.97	1,667.49	44.332	SF
Tallgrass 1-8 - KMG - SURVEYS						Out of range
Tallgrass 2-8 - KMG - SURVEYS						Out of range
Tallgrass 3-8 - KMG - SURVEYS						Out of range
Tallgrass 4-8 - KMG - SURVEYS						Out of range
Tallgrass 5-8 - KMG - SURVEYS						Out of range
Tallgrass 6-8 - KMG WELL - SURVEYS						Out of range
Williams 10-20 - KMG WELL - SURVEYS						Out of range
Williams 11-20 - KMG WELL - SURVEYS						Out of range
Williams 13-20 - KMG WELL - SURVEYS						Out of range
Williams 14-20 - KMG WELL - SURVEYS						Out of range
Williams 16-20 - KMG WELL - SURVEYS	8,363.54	7,570.70	832.06	784.43	17.468	CC, ES, SF
Williams 18-29 - KMG WELL - SURVEYS						Out of range
Williams 23-20 - KMG WELL - SURVEYS						Out of range
Williams 24-20 - KMG WELL - SURVEYS	7,141.34	7,014.95	1,976.87	1,930.97	43.072	CC, ES
Williams 24-20 - KMG WELL - SURVEYS	7,400.00	7,269.19	2,006.34	1,959.08	42.450	SF
Williams 24-20X - KMG WELL - SURVEYS	7,195.37	7,028.81	1,840.41	1,797.13	42.523	CC
Williams 24-20X - KMG WELL - SURVEYS	7,200.00	7,032.51	1,840.42	1,797.11	42.498	ES
Williams 24-20X - KMG WELL - SURVEYS	7,500.00	7,280.62	1,882.26	1,837.31	41.874	SF
Williams 25-20 - KMG WELL - SURVEYS						Out of range

CC - Min centre to center distance or convergent point, SF - min separation factor, ES - min ellipse separation

# Cathedral Energy Services

## Anticollision Summary Report

<b>Company:</b>	Crestone Peak Resources	<b>Local Co-ordinate Reference:</b>	Well DREAM WEAVER South 3A-21H-N268 - Slot DREAM WEAVER South 3A-21H-N268 SHL
<b>Project:</b>	DJ BASIN	<b>TVD Reference:</b>	23' KB @ 4924.00usft (Original Well Elev)
<b>Reference Site:</b>	S21-T2N-R68W	<b>MD Reference:</b>	23' KB @ 4924.00usft (Original Well Elev)
<b>Site Error:</b>	0.00 usft	<b>North Reference:</b>	True
<b>Reference Well:</b>	DREAM WEAVER South 3A-21H-N268	<b>Survey Calculation Method:</b>	Minimum Curvature
<b>Well Error:</b>	0.00 usft	<b>Output errors are at</b>	2.00 sigma
<b>Reference Wellbore</b>	OH	<b>Database:</b>	USA EDM 5000 Multi Users DB
<b>Reference Design:</b>	PLAN #1	<b>Offset TVD Reference:</b>	Offset Datum

Summary						
Site Name Offset Well - Wellbore - Design	Reference Measured Depth (usft)	Offset Measured Depth (usft)	Distance Between Centres (usft)	Distance Between Ellipses (usft)	Separation Factor	Warning
S32-T2N-R68W						
Williams 35-20 - KMG WELL - SURVEYS						Out of range
Williams 36-20 - KMG WELL - SURVEYS						Out of range
Williams 39-20 - KMG WELL - SURVEYS	7,799.83	7,570.81	242.06	200.40	5.810	CC
Williams 39-20 - KMG WELL - SURVEYS	7,800.00	7,570.87	242.06	200.40	5.810	ES
Williams 39-20 - KMG WELL - SURVEYS	7,900.00	7,598.37	262.21	216.77	5.771	SF
Williams 4-29 - KMG WELL - SURVEYS						Out of range
Williams 7-20 - KMG WELL - SURVEYS						Out of range
Williams 8-20 - KMG WELL - SURVEYS	7,038.76	7,186.90	2,026.36	1,970.09	36.009	CC, ES
Williams 8-20 - KMG WELL - SURVEYS	7,200.00	7,338.91	2,042.46	1,985.43	35.810	SF
Williams 9-20 - KMG WELL - SURVEYS	7,279.04	7,144.79	969.14	925.36	22.136	CC
Williams 9-20 - KMG WELL - SURVEYS	7,300.00	7,163.15	969.35	925.36	22.036	ES
Williams 9-20 - KMG WELL - SURVEYS	7,500.00	7,291.56	996.62	950.07	21.410	SF
Woolley 41-7 - CPR WELL - GYRO						Out of range
Woolley 42-7 KPK - KPK WELL - SURVEYS						Out of range



# Cathedral Energy Services

## Anticollision Summary Report

<b>Company:</b>	Crestone Peak Resources	<b>Local Co-ordinate Reference:</b>	Well DREAM WEAVER South 3A-21H-N268 - Slot DREAM WEAVER South 3A-21H-N268 SHL
<b>Project:</b>	DJ BASIN	<b>TVD Reference:</b>	23' KB @ 4924.00usft (Original Well Elev)
<b>Reference Site:</b>	S21-T2N-R68W	<b>MD Reference:</b>	23' KB @ 4924.00usft (Original Well Elev)
<b>Site Error:</b>	0.00 usft	<b>North Reference:</b>	True
<b>Reference Well:</b>	DREAM WEAVER South 3A-21H-N268	<b>Survey Calculation Method:</b>	Minimum Curvature
<b>Well Error:</b>	0.00 usft	<b>Output errors are at</b>	2.00 sigma
<b>Reference Wellbore</b>	OH	<b>Database:</b>	USA EDM 5000 Multi Users DB
<b>Reference Design:</b>	PLAN #1	<b>Offset TVD Reference:</b>	Offset Datum

### Summary

Site Name Offset Well - Wellbore - Design	Reference Measured Depth (usft)	Offset Measured Depth (usft)	Distance Between Centres (usft)	Distance Between Ellipses (usft)	Separation Factor	Warning
S7-T1N-R68W (Woolley-S/B/Morgan Hills)						
BAILEY 8-8-1 (EXISTING) - CPR WELL - SURVEYS						Out of range
BEARDEN 0-6-6 (EXISTING) - CPR WELL - SURVEYS						Out of range
BEARDEN 1 (EXISTING) - CPR WELL - GYRO						Out of range
BEARDEN 13-6 (EXISTING) - CPR WELL - SURVEYS						Out of range
BEARDEN 14-6 (EXISTING) - CPR WELL - SURVEYS						Out of range
BEARDEN 23-6 (EXISTING) - ENCANA WELL - GYRO						Out of range
BEARDEN 24-6 (EXISTING) - CPR WELL - CPR WELL						Out of range
BEARDEN 2-4-6 (EXISTING) - CPR WELL - SURVEYS						Out of range
BEARDEN 2-8-6 (EXISTING) - CPR WELL - SURVEYS						Out of range
BECKY 1 (EXISTING) - FOUNDATION WELL - NO SUR						Out of range
BECKY 2-6 (EXISTING) - EXTRACTION WELL - GYRO						Out of range
BECKY 5-6 (EXISTING) - FOUNDATION WELL - NO SU						Out of range
BECKY 7-6 (EXISTING) - EXTRACTION WELL - GYRO						Out of range
BILLINGS 21-7 (EXISTING) - KPK WELL - SURVEYS						Out of range
BULTHAUP 10-6 (EXISTING) - KMG WELL - SURVEYS						Out of range
BULTHAUP 15-6 (EXISTING) - KMG WELL - GYRO						Out of range
BULTHAUP 17-6 (EXISTING) - KMG WELL - SURVEYS						Out of range
BULTHAUP 21-6 (EXISTING) - KMG WELL - SURVEYS						Out of range
BULTHAUP 23-6 (EXISTING) - KMG WELL - SURVEYS						Out of range
BULTHAUP 27-6 (EXISTING) - KMG WELL - SURVEYS						Out of range
CANYON CREEK 43-13 (EXISTING) - CPR WELL - SUR						Out of range
CANYON CREEK 8-6-13X (EXISTING) - CPR WELL - S						Out of range
CHAMPLIN-86-AMOCO 1 (EXISTING) - AMOCO - SURV						Out of range
COAL CREEK 6-0-19 (EXISTING) - CPR WELL - STK						Out of range
COAL CREEK 6-0-19 (EXISTING) - OH - SURVEYS						Out of range
COMMONS 28-19 (EXISTING) - KMG WELL - SURVEYS						Out of range
ERIE CHAMPLIN 18-9 (EXISTING) - EXISTING - SURVE						Out of range
ERIE CHAMPLIN B UNIT 1 - CPR WELL - GYRO						Out of range
ERIE CHAMPLIN B UNIT 2 - CPR WELL - GYRO						Out of range
I & J 7-6 (EXISTING) - KMG WELL - GYRO						Out of range
Morgan Hills 1A-7H-A168 - HZ - FINAL						Out of range
Morgan Hills 1B-7H-A168 - HZ - FINAL						Out of range
Morgan Hills 1C-7H-A168 - HZ - FINAL						Out of range
Morgan Hills 1D-7H-A168 - HZ - FINAL						Out of range
Morgan Hills 1E-7H-A168 - HZ - FINAL						Out of range
Morgan Hills 1F-7H-A168 - HZ - FINAL						Out of range
Morgan Hills 1G-7H-A168 - HZ - FINAL						Out of range
Morgan Hills 1H-7H-A168 - HZ - FINAL						Out of range
Morgan Hills 1I-7H-A168 - OH - FINAL						Out of range
SOSA 11-18 (EXISTING) - CPR WELL - SURVEYS						Out of range
SOSA 12-18 (EXISTING) - CPR WELL - SURVEYS						Out of range
SOSA 21-18 (EXISTING) - CPR WELL - SURVEYS						Out of range
SOSA 22-18 (EXISTING) - CPR WELL - SURVEYS						Out of range
SOSA A UNIT 1 (EXISTING) - CPR WELL - GYRO						Out of range
TALLGRASS 33-17 (EXISTING) - KMG WELL - SURVEY						Out of range
THOMAS 14-7(EXISTING) - CPR WELL - SURVEYS						Out of range
THOMAS 24-7 (EXISTING) - CPR WELL - SURVEYS						Out of range
THOMAS 2-8-7 (EXISTING) - CPR WELL - SURVEYS						Out of range
THOMAS 33-7 (EXISTING) - CPR WELL - SURVEYS						Out of range
THOMAS 7-12 (EXISTING) - CPR WELL - GYRO						Out of range
Thomas 7-14 (AL) - Existing - NO SURVEYS						Out of range

CC - Min centre to center distance or convergent point, SF - min separation factor, ES - min ellipse separation



# Cathedral Energy Services

## Anticollision Summary Report

<b>Company:</b>	Crestone Peak Resources	<b>Local Co-ordinate Reference:</b>	Well DREAM WEAVER South 3A-21H-N268 - Slot DREAM WEAVER South 3A-21H-N268 SHL
<b>Project:</b>	DJ BASIN	<b>TVD Reference:</b>	23' KB @ 4924.00usft (Original Well Elev)
<b>Reference Site:</b>	S21-T2N-R68W	<b>MD Reference:</b>	23' KB @ 4924.00usft (Original Well Elev)
<b>Site Error:</b>	0.00 usft	<b>North Reference:</b>	True
<b>Reference Well:</b>	DREAM WEAVER South 3A-21H-N268	<b>Survey Calculation Method:</b>	Minimum Curvature
<b>Well Error:</b>	0.00 usft	<b>Output errors are at</b>	2.00 sigma
<b>Reference Wellbore</b>	OH	<b>Database:</b>	USA EDM 5000 Multi Users DB
<b>Reference Design:</b>	PLAN #1	<b>Offset TVD Reference:</b>	Offset Datum

Summary						
Site Name	Reference Measured Depth (usft)	Offset Measured Depth (usft)	Distance Between Centres (usft)	Distance Between Ellipses (usft)	Separation Factor	Warning
<b>Offset Well - Wellbore - Design</b>						
S7-T1N-R68W (Woolley-S/B/Morgan Hills)						
THOMAS E UNIT 1 (EXISTING) - CPR WELL - GYRO						Out of range
THOMAS E UNIT 2 - VESSELS WELL - INC ONLY						Out of range
THOMAS K UNIT 1 (EXISTING) - EXISTING - NO SURV						Out of range
WHEELER G UNIT 1 - CPR - GYRO						Out of range
WIGGETT 13-1 - CPR - GYRO						Out of range
WIGGETT 8-2-13 (EXISTING) - CPR WELL - SURVEYS						Out of range
WOOLLEY 11-7 (EXISTING) - CPR WELL - SURVEYS						Out of range
WOOLLEY 12-7 (EXISTING) - CPR WELL - GYRO						Out of range
WOOLLEY 21-7 (EXISTING) - CPR WELL - GYRO						Out of range
WOOLLEY 22-7 (EXISTING) - CPR WELL - SURVEYS						Out of range
WOOLLEY 2-4-7 (EXISTING) - CPR WELL - SURVEYS						Out of range
WOOLLEY 4-0-7 (EXISTING) - CPR WELL - SURVEYS						Out of range
WOOLLEY 41-7 (EXISTING) - CPR WELL - GYRO						Out of range
WOOLLEY 42-7 (EXISTING) - CPR WELL - GYRO						Out of range
WOOLLEY 42-7 KPK (EXISTING) - KPK WELL - SURVE						Out of range
WOOLLEY A 1-7 (EXISTING) - CPR WELL - GYRO						Out of range
WOOLLEY F UNIT 1 (EXISTING) - CPR WELL - GYRO						Out of range
Woolley-Becky 2A-7H-E168 - Hz - FINAL						Out of range
Woolley-Becky 2B-7H-E168 - Hz - FINAL						Out of range
Woolley-Becky 2C-7H-E168 - Hz - FINAL						Out of range
Woolley-Becky 2D-7H-E168 - Hz - FINAL						Out of range
Woolley-Becky 2E-7H-E168 - Hz - FINAL						Out of range
Woolley-Becky 2F-7H-E168 - Hz - FINAL						Out of range
Woolley-Becky 2G-7H-E168 - Hz - FINAL						Out of range
Woolley-Becky 2H-7H-E168 - Hz - FINAL						Out of range
Woolley-Sosa 2A-7H-E168 - OH - FINAL						Out of range
Woolley-Sosa 2B-7H-E168 - HZ - FINAL						Out of range
Woolley-Sosa 2C-7H-E168 - HZ - FINAL						Out of range
Woolley-Sosa 2D-7H-E168 - HZ - FINAL						Out of range
Woolley-Sosa 2E-7H-E168 - HZ - FINAL						Out of range
Woolley-Sosa 2F-7H-E168 - HZ - FINAL						Out of range
Woolley-Sosa 2G-7H-E168 - HZ - FINAL						Out of range

# Cathedral Energy Services

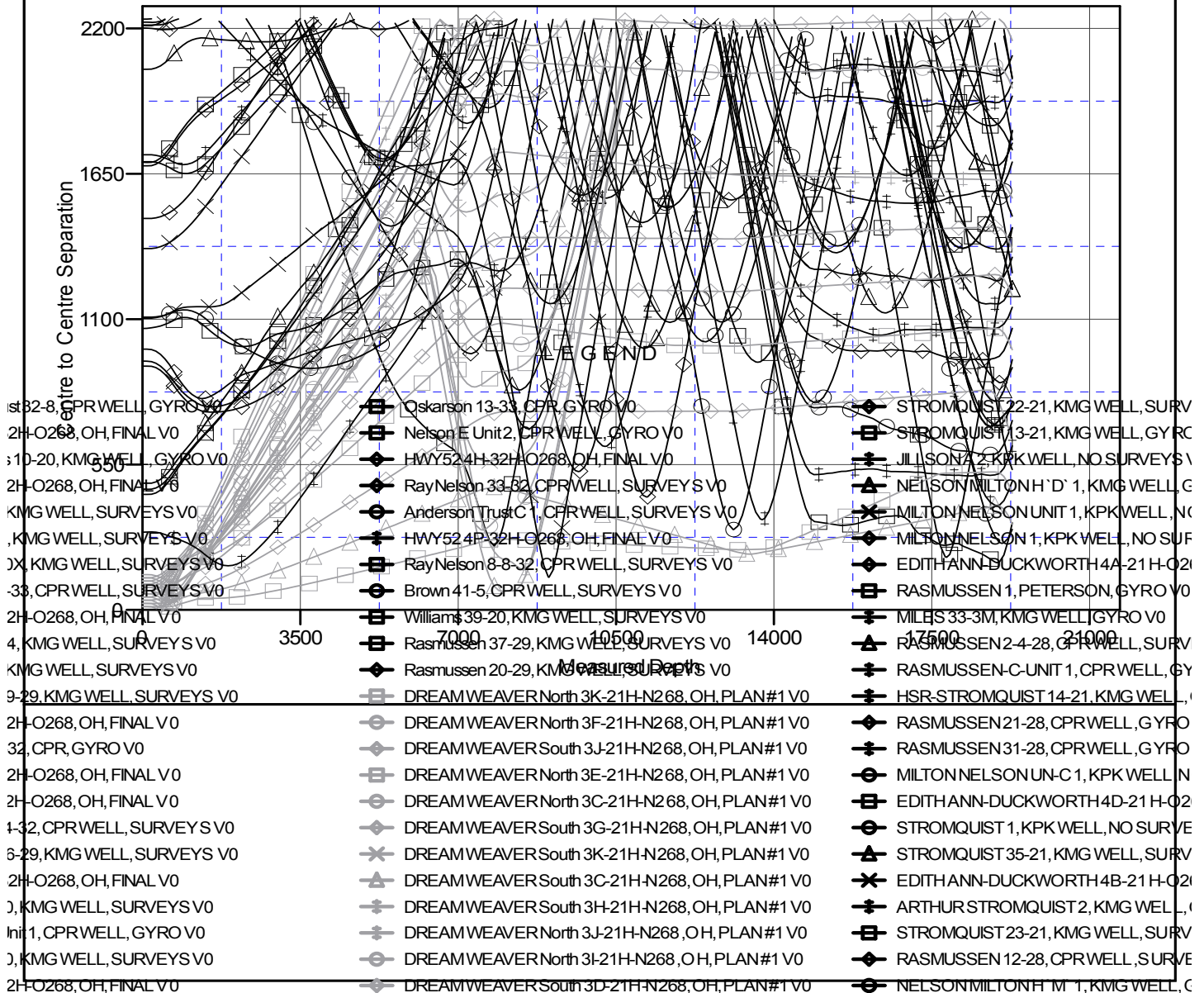
## Anticollision Summary Report

<b>Company:</b>	Crestone Peak Resources	<b>Local Co-ordinate Reference:</b>	Well DREAM WEAVER South 3A-21H-N268 - Slot DREAM WEAVER South 3A-21H-N268 SHL
<b>Project:</b>	DJ BASIN	<b>TVD Reference:</b>	23' KB @ 4924.00usft (Original Well Elev)
<b>Reference Site:</b>	S21-T2N-R68W	<b>MD Reference:</b>	23' KB @ 4924.00usft (Original Well Elev)
<b>Site Error:</b>	0.00 usft	<b>North Reference:</b>	True
<b>Reference Well:</b>	DREAM WEAVER South 3A-21H-N268	<b>Survey Calculation Method:</b>	Minimum Curvature
<b>Well Error:</b>	0.00 usft	<b>Output errors are at</b>	2.00 sigma
<b>Reference Wellbore</b>	OH	<b>Database:</b>	USA EDM 5000 Multi Users DB
<b>Reference Design:</b>	PLAN #1	<b>Offset TVD Reference:</b>	Offset Datum

Reference Depths are relative to 23' KB @ 4924.00usft ( Original Well E  
Offset Depths are relative to Offset Datum  
Central Meridian is -105.500000

Coordinates are relative to: DREAM WEAVER South 3A-21H-N268 - Slot DREAM  
Coordinate System is US State Plane 1983, Colorado Northern Zone  
Grid Convergence at Surface is: 0.32°

### Ladder Plot



CC - Min centre to center distance or convergent point, SF - min separation factor, ES - min ellipse separation

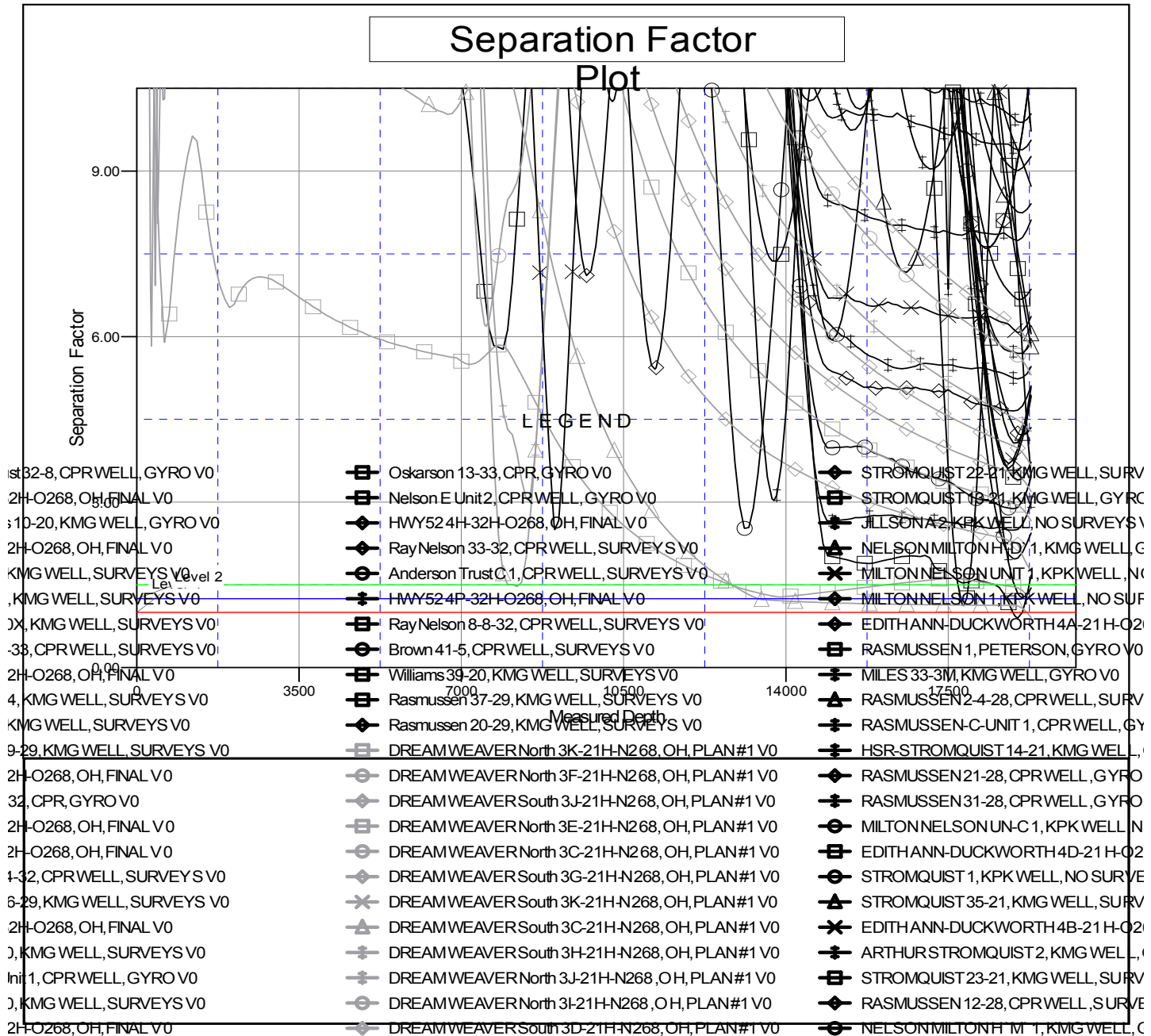
# Cathedral Energy Services

## Anticollision Summary Report

<b>Company:</b>	Crestone Peak Resources	<b>Local Co-ordinate Reference:</b>	Well DREAM WEAVER South 3A-21H-N268 - Slot DREAM WEAVER South 3A-21H-N268 SHL
<b>Project:</b>	DJ BASIN	<b>TVD Reference:</b>	23' KB @ 4924.00usft (Original Well Elev)
<b>Reference Site:</b>	S21-T2N-R68W	<b>MD Reference:</b>	23' KB @ 4924.00usft (Original Well Elev)
<b>Site Error:</b>	0.00 usft	<b>North Reference:</b>	True
<b>Reference Well:</b>	DREAM WEAVER South 3A-21H-N268	<b>Survey Calculation Method:</b>	Minimum Curvature
<b>Well Error:</b>	0.00 usft	<b>Output errors are at</b>	2.00 sigma
<b>Reference Wellbore</b>	OH	<b>Database:</b>	USA EDM 5000 Multi Users DB
<b>Reference Design:</b>	PLAN #1	<b>Offset TVD Reference:</b>	Offset Datum

Reference Depths are relative to 23' KB @ 4924.00usft (Original Well E  
Offset Depths are relative to Offset Datum  
Central Meridian is -105.500000

Coordinates are relative to: DREAM WEAVER South 3A-21H-N268 - Slot DREAM  
Coordinate System is US State Plane 1983, Colorado Northern Zone  
Grid Convergence at Surface is: 0.32°



CC - Min centre to center distance or convergent point, SF - min separation factor, ES - min ellipse separation