

Crestone Peak Resources

DJ BASIN

S21-T2N-R68W

DREAM WEAVER South 3K-21H-N268

OH

PLAN #2

Anticollision Summary Report

23 May, 2018

Cathedral Energy Services

Anticollision Summary Report

Company:	Crestone Peak Resources	Local Co-ordinate Reference:	Well DREAM WEAVER South 3K-21H-N268 - Slot DREAM WEAVER South 3K-21H-N268 SHL
Project:	DJ BASIN	TVD Reference:	23' KB @ 4924.00usft
Reference Site:	S21-T2N-R68W	MD Reference:	23' KB @ 4924.00usft
Site Error:	0.00 usft	North Reference:	True
Reference Well:	DREAM WEAVER South 3K-21H-N268	Survey Calculation Method:	Minimum Curvature
Well Error:	0.00 usft	Output errors are at	2.00 sigma
Reference Wellbore	OH	Database:	USA EDM 5000 Multi Users DB
Reference Design:	PLAN #2	Offset TVD Reference:	Offset Datum

Reference	PLAN #2		
Filter type:	NO GLOBAL FILTER: Using user defined selection & filtering criteria		
Interpolation Method:	MD Interval 100.00usft	Error Model:	ISCWSA
Depth Range:	Unlimited	Scan Method:	Closest Approach 3D
Results Limited by:	Maximum center-center distance of 1,933.21 usft	Error Surface:	Pedal Curve
Warning Levels Evaluated at:	2.00 Sigma	Casing Method:	Not applied

Survey Tool Program	Date	5/23/2018		
From (usft)	To (usft)	Survey (Wellbore)	Tool Name	Description
0.00	200.00	PLAN #2 (OH)	VESSI_GYROFLEX	VESSI Gyroflex Gyro
2,001.00	19,075.24	PLAN #2 (OH)	MWD+HDGM	OWSG MWD + HDGM

Summary						
Site Name	Reference Measured Depth (usft)	Offset Measured Depth (usft)	Distance Between Centres (usft)	Distance Between Ellipses (usft)	Separation Factor	Warning
S21-T2N-R68W						
DREAM WEAVER North 3A-21H-N268 - OH - PLAN #1	200.00	200.00	255.00	254.51	520.063	CC
DREAM WEAVER North 3A-21H-N268 - OH - PLAN #1	300.00	295.38	255.27	254.43	305.234	ES
DREAM WEAVER North 3A-21H-N268 - OH - PLAN #1	5,200.00	4,762.92	1,918.65	1,895.07	81.370	SF
DREAM WEAVER North 3B-21H-N268 - OH - PLAN #3	646.15	639.87	235.53	233.47	114.502	CC, ES
DREAM WEAVER North 3B-21H-N268 - OH - PLAN #3	5,600.00	5,207.04	1,913.60	1,887.27	72.684	SF
DREAM WEAVER North 3C-21H-N268 - OH - PLAN #2	703.99	697.81	220.86	218.60	97.742	CC, ES
DREAM WEAVER North 3C-21H-N268 - OH - PLAN #2	5,800.00	5,414.03	1,923.41	1,895.71	69.433	SF
DREAM WEAVER North 3D-21H-N268 - OH - PLAN #1	775.94	770.97	205.78	203.26	81.740	CC, ES
DREAM WEAVER North 3D-21H-N268 - OH - PLAN #1	8,700.00	7,050.00	1,926.28	1,876.70	38.849	SF
DREAM WEAVER North 3E-21H-N268 - OH - PLAN #1	829.05	824.72	192.55	189.84	71.121	CC, ES
DREAM WEAVER North 3E-21H-N268 - OH - PLAN #1	8,700.00	7,067.00	1,633.45	1,585.17	33.831	SF
DREAM WEAVER North 3F-21H-N268 - OH - PLAN #1	849.97	845.64	180.88	178.09	65.005	CC, ES
DREAM WEAVER North 3F-21H-N268 - OH - PLAN #1	8,700.00	7,171.66	1,514.03	1,464.69	30.685	SF
DREAM WEAVER North 3G-21H-N268 - OH - PLAN #1	879.13	875.41	169.47	166.59	58.692	CC
DREAM WEAVER North 3G-21H-N268 - OH - PLAN #1	900.00	896.20	169.50	166.54	57.241	ES
DREAM WEAVER North 3J-21H-N268 - OH - PLAN #1	7,300.00	8,332.04	1,113.61	1,068.93	24.926	SF
DREAM WEAVER North 3H-21H-N268 - OH - PLAN #1	814.39	810.37	158.31	155.66	59.572	CC, ES
DREAM WEAVER North 3H-21H-N268 - OH - PLAN #1	7,300.00	8,239.95	854.88	809.96	19.030	SF
DREAM WEAVER North 3I-21H-N268 - OH - PLAN #1	872.65	878.69	103.16	100.26	35.551	CC, ES
DREAM WEAVER North 3I-21H-N268 - OH - PLAN #1	7,516.10	8,157.29	499.68	455.95	11.424	SF
DREAM WEAVER North 3J-21H-N268 - OH - PLAN #1	860.34	867.12	93.38	90.52	32.635	CC, ES
DREAM WEAVER North 3J-21H-N268 - OH - PLAN #1	8,300.00	7,462.98	353.39	307.29	7.666	SF
DREAM WEAVER North 3K-21H-N268 - OH - PLAN #1	804.04	813.13	89.74	87.07	33.598	CC, ES
DREAM WEAVER North 3K-21H-N268 - OH - PLAN #1	7,555.13	8,037.35	154.87	111.12	3.540	SF
DREAM WEAVER North 3A-21H-N268 - OH - PLAN #1	103.35	103.35	121.43	121.28	819.479	CC, ES
DREAM WEAVER South 3A-21H-N268 - OH - PLAN #1	6,200.00	5,840.71	1,902.50	1,869.38	57.455	SF
DREAM WEAVER South 3B-21H-N268 - OH - PLAN #2	103.36	103.36	109.29	109.14	737.481	CC, ES
DREAM WEAVER South 3B-21H-N268 - OH - PLAN #2	19,076.22	19,351.76	1,893.44	1,522.78	5.108	SF
DREAM WEAVER South 3C-21H-N268 - OH - PLAN #1	103.40	103.40	97.14	96.99	654.892	CC, ES
DREAM WEAVER South 3C-21H-N268 - OH - PLAN #1	6,700.00	6,444.57	1,697.82	1,660.65	45.677	SF
DREAM WEAVER South 3D-21H-N268 - OH - PLAN #1	200.00	200.00	85.00	84.51	173.355	CC, ES
DREAM WEAVER South 3D-21H-N268 - OH - PLAN #1	19,076.22	18,865.52	1,599.20	1,238.47	4.433	SF
DREAM WEAVER South 3E-21H-N268 - OH - PLAN #1	590.30	589.09	67.85	65.99	36.437	CC
DREAM WEAVER South 3E-21H-N268 - OH - PLAN #1	600.00	601.30	67.86	65.96	35.707	ES

CC - Min centre to center distance or convergent point, SF - min separation factor, ES - min ellipse separation

Cathedral Energy Services

Anticollision Summary Report

Company:	Crestone Peak Resources	Local Co-ordinate Reference:	Well DREAM WEAVER South 3K-21H-N268 - Slot DREAM WEAVER South 3K-21H-N268 SHL
Project:	DJ BASIN	TVD Reference:	23' KB @ 4924.00usft
Reference Site:	S21-T2N-R68W	MD Reference:	23' KB @ 4924.00usft
Site Error:	0.00 usft	North Reference:	True
Reference Well:	DREAM WEAVER South 3K-21H-N268	Survey Calculation Method:	Minimum Curvature
Well Error:	0.00 usft	Output errors are at	2.00 sigma
Reference Wellbore	OH	Database:	USA EDM 5000 Multi Users DB
Reference Design:	PLAN #2	Offset TVD Reference:	Offset Datum

Summary						
Site Name Offset Well - Wellbore - Design	Reference Measured Depth (usft)	Offset Measured Depth (usft)	Distance Between Centres (usft)	Distance Between Ellipses (usft)	Separation Factor	Warning
S21-T2N-R68W						
DREAM WEAVER South 3E-21H-N268 - OH - PLAN #1	19,076.22	19,013.28	1,319.43	949.15	3.563	SF
DREAM WEAVER South 3F-21H-N268 - OH - PLAN #1	200.00	200.00	60.71	60.22	123.824	CC, ES
DREAM WEAVER South 3F-21H-N268 - OH - PLAN #1	19,076.22	19,230.92	1,142.96	777.25	3.125	SF
DREAM WEAVER South 3G-21H-N268 - OH - PLAN #1	518.60	517.94	45.23	43.62	28.135	CC, ES
DREAM WEAVER South 3G-21H-N268 - OH - PLAN #1	19,076.22	19,093.03	939.15	569.51	2.541	SF
DREAM WEAVER South 3H-21H-N268 - OH - PLAN #1	475.87	475.45	33.92	32.47	23.291	CC, ES
DREAM WEAVER South 3H-21H-N268 - OH - PLAN #1	19,076.22	19,012.19	669.48	299.32	1.809	SF
DREAM WEAVER South 3I-21H-N268 - OH - PLAN #2	419.05	418.80	22.64	21.38	18.019	CC
DREAM WEAVER South 3I-21H-N268 - OH - PLAN #2	19,076.22	19,097.31	338.10	-22.41	0.938	Level 1, ES, SF
DREAM WEAVER South 3J-21H-N268 - OH - PLAN #2	356.54	356.43	11.39	10.35	10.984	CC
DREAM WEAVER South 3J-21H-N268 - OH - PLAN #2	400.00	399.84	11.53	10.34	9.714	ES
DREAM WEAVER South 3J-21H-N268 - OH - PLAN #2	19,076.22	19,244.11	275.23	16.52	1.064	Level 2, SF

Cathedral Energy Services

Anticollision Summary Report

Company:	Crestone Peak Resources	Local Co-ordinate Reference:	Well DREAM WEAVER South 3K-21H-N268 - Slot DREAM WEAVER South 3K-21H-N268 SHL
Project:	DJ BASIN	TVD Reference:	23' KB @ 4924.00usft
Reference Site:	S21-T2N-R68W	MD Reference:	23' KB @ 4924.00usft
Site Error:	0.00 usft	North Reference:	True
Reference Well:	DREAM WEAVER South 3K-21H-N268	Survey Calculation Method:	Minimum Curvature
Well Error:	0.00 usft	Output errors are at	2.00 sigma
Reference Wellbore	OH	Database:	USA EDM 5000 Multi Users DB
Reference Design:	PLAN #2	Offset TVD Reference:	Offset Datum

Summary						
Site Name Offset Well - Wellbore - Design	Reference Measured Depth (usft)	Offset Measured Depth (usft)	Distance Between Centres (usft)	Distance Between Ellipses (usft)	Separation Factor	Warning
S21-T2N-R68W (OFFSETS)						
ARTHUR STROMQUIST 2 - KMG WELL - GYRO						Out of range
BLISS 41-21 - KPK WELL - SURVEYS						Out of range
BOULDER CREEK 9-4K8 - SNYDER OIL - NO SURVEY						Out of range
BROWN C UNIT 1 - CPR WELL - GYRO						Out of range
CANINO 1 - HUGHES C W-SOTEXCO 1 - NO SURVEY						Out of range
CHAMPLIN 41-4/1-68/ 1 - KMG WELL - NO SURVEYS						Out of range
CHAMPLIN 86 AMOCO B 2 - KPK WELL - NO SURVEY						Out of range
CHAMPLIN 86 AMOCO UT/Q 1 - KMG WELL - GYRO	19,076.22	7,427.00	1,854.01	1,731.78	15.169	CC, ES, SF
CHAMPLIN 86 AMOCO-B 1 - KPK WELL - NO SURVEY						Out of range
CHAMPLIN 86 AMOCO-B 3 - KPK WELL - NO SURVEY						Out of range
CHAMPLIN 86 AMOCO-B 4 - KPK WELL - NO SURVEY						Out of range
CHAMPLIN 86 AMOCO-B 5 - KPK WELL - NO SURVEY	17,507.66	6,100.00	1,405.27	1,299.65	13.306	CC, ES
CHAMPLIN 86 AMOCO-B 5 - KPK WELL - NO SURVEY	17,700.00	6,100.00	1,419.41	1,310.37	13.017	SF
CHAMPLIN 86 AMOCO-B 6 - KPK WELL - NO SURVEY						Out of range
CHAMPLIN 86 AMOCO-F 5 - KPK WELL - NO SURVEY						Out of range
CHAMPLIN 86 AMOCO-O 9 - KMG WELL - GYRO						Out of range
CHAMPLIN32-4/1-68/ 2 - KMG WELL - NO SURVEYS						Out of range
CHMPLN 86 AMOCO-F 1 - KPK WELL - NO SURVEYS						Out of range
COLCLASURE 42-21 - KPK WELL - NO SURVEYS						Out of range
COOLEY 11-16 - KMG WELL - SURVEYS						Out of range
COOLEY 12-16 - KMG WELL - SURVEYS						Out of range
COOLEY 13-16 - KMG WELL - SURVEYS						Out of range
COOLEY 14-16 - KMG WELL - SURVEYS						Out of range
COOLEY 22-16 - KMG WELL - SURVEYS						Out of range
COOLEY 23-16 - KMG WELL - SURVEYS						Out of range
COOLEY 35-16 - KMG WELL - SURVEYS						Out of range
COPPER 31-15 - KMG WELL - SURVEYS						Out of range
CPC 31-4 (1-68) 3 - ANADARKO WELL - NO SURVEYS						Out of range
CPC 42-4 (1-68) 4 - ANADARKO WELL - NO SURVEYS						Out of range
DOMENICO 1 - NOBLE WELL - GYRO						Out of range
DUCKWORTH 31-16 - CPR WELL - GYRO						Out of range
DUCKWORTH 32-16 - CPR WELL - SURVEYS						Out of range
DUCKWORTH 33-16 - CPR WELL - SURVEYS						Out of range
DUCKWORTH 41-16 - CPR WELL - SURVEYS						Out of range
DUCKWORTH 43-16 - CPR WELL - GYRO						Out of range
DUCKWORTH 44-16 - CPR WELL - SURVEYS						Out of range
DUCKWORTH 6-0-16 - CPR WELL - SURVEYS						Out of range
DUCKWORTH B UNIT 1 - CPR WELL - GYRO						Out of range
DUCKWORTH B UNIT 2 - CPR WELL - GYRO						Out of range
EAST RINN 0-4-15 - CPR WELL - SURVEYS						Out of range
EAST RINN 13-15 - CPR WELL - SURVEYS						Out of range
EDITH ANN 1 - CPR WELL - GYRO	7,390.43	7,199.52	1,709.32	1,676.81	52.574	CC, ES
EDITH ANN 1 - CPR WELL - GYRO	7,800.00	7,303.60	1,767.98	1,733.79	51.702	SF
EDITH ANN 33-21 - CPR WELL - GYRO	6,838.68	6,747.80	724.63	694.49	24.040	CC, ES
EDITH ANN 33-21 - CPR WELL - GYRO	6,900.00	6,806.64	725.97	695.62	23.918	SF
EDITH ANN 34-21 - CPR WELL - GYRO	8,175.11	7,306.15	380.93	344.15	10.356	CC, ES
EDITH ANN 34-21 - CPR WELL - GYRO	8,200.00	7,305.89	381.74	344.65	10.290	SF
EDITH ANN 4-21 - CPR WELL - SURVEYS	7,697.33	7,465.94	1,327.57	1,283.37	30.034	CC
EDITH ANN 4-21 - CPR WELL - SURVEYS	7,700.00	7,466.34	1,327.57	1,283.34	30.017	ES
EDITH ANN 4-21 - CPR WELL - SURVEYS	8,100.00	7,471.41	1,393.37	1,344.70	28.628	SF
EDITH ANN 44-21 - CPR WELL - GYRO						Out of range

CC - Min centre to center distance or convergent point, SF - min separation factor, ES - min ellipse separation

Cathedral Energy Services

Anticollision Summary Report

Company:	Crestone Peak Resources	Local Co-ordinate Reference:	Well DREAM WEAVER South 3K-21H-N268 - Slot DREAM WEAVER South 3K-21H-N268 SHL
Project:	DJ BASIN	TVD Reference:	23' KB @ 4924.00usft
Reference Site:	S21-T2N-R68W	MD Reference:	23' KB @ 4924.00usft
Site Error:	0.00 usft	North Reference:	True
Reference Well:	DREAM WEAVER South 3K-21H-N268	Survey Calculation Method:	Minimum Curvature
Well Error:	0.00 usft	Output errors are at	2.00 sigma
Reference Wellbore	OH	Database:	USA EDM 5000 Multi Users DB
Reference Design:	PLAN #2	Offset TVD Reference:	Offset Datum

Summary						
Site Name Offset Well - Wellbore - Design	Reference Measured Depth (usft)	Offset Measured Depth (usft)	Distance Between Centres (usft)	Distance Between Ellipses (usft)	Separation Factor	Warning
S21-T2N-R68W (OFFSETS)						
EDITH ANN 6-8-21 - CPR WELL - SURVEYS	8,828.29	7,468.59	1,086.32	1,037.30	22.162	CC, ES
EDITH ANN 6-8-21 - CPR WELL - SURVEYS	9,100.00	7,466.95	1,119.78	1,067.52	21.426	SF
EDITH ANN 8-8-21 - CPR WELL - SURVEYS						Out of range
EDITH ANN-DUCKWORTH 4A-21H-O268 - CPR - FINAL	8,288.69	7,575.66	117.86	78.75	3.014	CC
EDITH ANN-DUCKWORTH 4A-21H-O268 - CPR - FINAL	8,300.00	7,565.73	117.97	78.41	2.983	ES, SF
EDITH ANN-DUCKWORTH 4B-21H-O268 - CPR - FINAL	8,532.47	7,385.52	427.32	386.61	10.496	CC, ES
EDITH ANN-DUCKWORTH 4B-21H-O268 - CPR - FINAL	8,600.00	7,365.78	431.76	389.65	10.254	SF
EDITH ANN-DUCKWORTH 4C-21H-O268 - CPR - FINA	8,487.39	7,280.10	934.69	894.42	23.213	CC
EDITH ANN-DUCKWORTH 4C-21H-O268 - CPR - FINA	8,500.00	7,271.50	934.73	894.35	23.149	ES
EDITH ANN-DUCKWORTH 4C-21H-O268 - CPR - FINA	8,800.00	7,156.81	969.90	926.19	22.193	SF
EDITH ANN-DUCKWORTH 4D-21H-O268 - CPR - FINA	8,546.80	7,397.03	1,104.72	1,063.93	27.085	CC, ES
EDITH ANN-DUCKWORTH 4D-21H-O268 - CPR - FINA	8,900.00	7,255.71	1,146.72	1,101.62	25.426	SF
EDITH ANN-DUCKWORTH 4E-21H-O268 - CPR - FINAL	8,576.16	7,209.94	1,453.06	1,412.10	35.473	CC
EDITH ANN-DUCKWORTH 4E-21H-O268 - CPR - FINAL	8,600.00	7,194.99	1,453.27	1,412.08	35.277	ES
EDITH ANN-DUCKWORTH 4E-21H-O268 - CPR - FINAL	9,100.00	7,075.84	1,530.49	1,483.45	32.539	SF
EDITH ANN-DUCKWORTH 4F-21H-O268 - CPR - FINAL	8,554.80	7,300.11	1,825.42	1,784.49	44.597	CC
EDITH ANN-DUCKWORTH 4F-21H-O268 - CPR - FINAL	8,600.00	7,258.18	1,825.73	1,784.39	44.156	ES
EDITH ANN-DUCKWORTH 4F-21H-O268 - CPR - FINAL	9,200.00	7,146.00	1,918.02	1,869.30	39.375	SF
EDITH ANN-DUCKWORTH 4G-21H-O268 - CPR - FINA						Out of range
EDITH ANN-DUCKWORTH 4H-21H-O268 - CPR - FINA						Out of range
ERIE CORP 42-4 - KMG WELL - NO SURVEYS						Out of range
EVERIST 12-10 - KMG WELL - SURVEYS						Out of range
EVERIST 12-10X - KMG WELL - NO SURVEYS						Out of range
EVERIST 13-10 - KMG WELL - SURVEYS						Out of range
EVERIST 33-10 - KMG WELL - SURVEYS						Out of range
FAIRVIEW 1 - EXTRACTION WELL - NO SURVEYS						Out of range
FAIRVIEW 3 - EXTRACTION O&G LLC - SURVEYS						Out of range
FAIRVIEW 4 - EXTRACTION O&G LLC - SURVEYS						Out of range
FAIRVIEW 5 - EXTRACTION O&G LLC - SURVEYS						Out of range
FILE 1-17 - CPR WELL - SURVEYS						Out of range
FILE 31-17 - CPR WELL - SURVEYS						Out of range
FILE 32-17 - CPR WELL - SURVEYS						Out of range
FILE 41-17 - CPR WELL - SURVEYS						Out of range
FILE 42-17 - CPR WELL - NO SURVEYS						Out of range
FILE 4-2-17 - CPR WELL - SURVEYS						Out of range
FILE 42-17X - CPR WELL - SURVEYS						Out of range
FILE 6-0-17 - CPR WELL - SURVEYS						Out of range
FILE 8-2-17 - CPR WELL - SURVEYS						Out of range
FREDERICKS 13-27 - KMG WELL - NO SURVEYS						Out of range
FREDERICKS 13-27X - KMG WELL - SURVEYS						Out of range
GARVER U 34-5JI - KMG WELL - NO SURVEYS						Out of range
HINGLEY 1 - KPK WELL - NO SURVEYS						Out of range
HINGLEY 2 - KPK WELL - NO SUREYS						Out of range
HSR-STROMQUIST 14-21 - KMG WELL - GYRO	0.00	0.00	392.88			
HSR-STROMQUIST 14-21 - KMG WELL - GYRO	7,800.00	7,305.47	1,178.63	1,144.49	34.521	SF
JACK A MLEYNEK 2 - KPK WELL - NO SURVEYS						Out of range
JACK MLEYNEK 1 - KPK WELL - NO SURVEYS						Out of range
JACK MLEYNEK 3 - KPK WELL - NO SURVEYS						Out of range
JACK MLEYNEK 4 - KPK WELL - NO SURVEYS						Out of range
JACK MLEYNEK 5 - KPK WELL - NO SURVEYS						Out of range
JILLSON 0-6-22 - CPR WELL - SURVEYS						Out of range

CC - Min centre to center distance or convergent point, SF - min separation factor, ES - min ellipse separation

Cathedral Energy Services

Anticollision Summary Report

Company:	Crestone Peak Resources	Local Co-ordinate Reference:	Well DREAM WEAVER South 3K-21H-N268 - Slot DREAM WEAVER South 3K-21H-N268 SHL
Project:	DJ BASIN	TVD Reference:	23' KB @ 4924.00usft
Reference Site:	S21-T2N-R68W	MD Reference:	23' KB @ 4924.00usft
Site Error:	0.00 usft	North Reference:	True
Reference Well:	DREAM WEAVER South 3K-21H-N268	Survey Calculation Method:	Minimum Curvature
Well Error:	0.00 usft	Output errors are at	2.00 sigma
Reference Wellbore	OH	Database:	USA EDM 5000 Multi Users DB
Reference Design:	PLAN #2	Offset TVD Reference:	Offset Datum

Summary						
Site Name Offset Well - Wellbore - Design	Reference Measured Depth (usft)	Offset Measured Depth (usft)	Distance Between Centres (usft)	Distance Between Ellipses (usft)	Separation Factor	Warning
S21-T2N-R68W (OFFSETS)						
JILLSON 1 - KPK WELL - NO SURVEYS						Out of range
JILLSON 11-22 - CPR WELL - GYRO						Out of range
JILLSON 12-22 - CPR WELL - GYRO						Out of range
JILLSON 14-22 - CPR WELL - GYRO						Out of range
JILLSON 3 - KPK WELL - NO SURVEYS						Out of range
JILLSON 5 - KPK WELL - NO SURVEYS						Out of range
JILLSON A 1 - KPK WELL - NO SURVEYS	4,149.74	4,077.34	1,257.64	1,240.91	75.198	CC
JILLSON A 1 - KPK WELL - NO SURVEYS	4,400.00	4,324.27	1,258.29	1,240.14	69.329	ES
JILLSON A 1 - KPK WELL - NO SURVEYS	5,500.00	5,409.64	1,276.65	1,252.15	52.126	SF
JILLSON A 2 - KPK WELL - NO SURVEYS	5,542.32	5,451.40	961.33	937.86	40.959	CC, ES, SF
JILLSON A 3 - KPK WELL - NO SURVEYS						Out of range
JILLSON A 4 - KPK WELL - NO SURVEYS						Out of range
JILLSON-EAST RINN 3A-22H-M268 - CPR WELL - SUR						Out of range
JILLSON-EAST RINN 3B-22H-M268 - CPR WELL - SUR						Out of range
JILLSON-EAST RINN 3C-22H-M268 - CPR WELL - SUR						Out of range
KENNEDY 1 - MACEY & MERSHON WELL - NO SURVE	5,544.76	5,440.81	1,923.95	1,904.23	97.562	CC, ES, SF
KENNEDY 31-21 - CPR WELL - GYRO						Out of range
KENNEDY 32-21 - CPR WELL - GYRO	6,736.36	6,630.64	1,664.56	1,635.19	56.677	CC, ES
KENNEDY 32-21 - CPR WELL - GYRO	7,000.00	6,894.21	1,703.48	1,672.88	55.679	SF
KENNEDY 41-21 - CPR WELL - GYRO						Out of range
KENNEDY 4-2-21 - CPR WELL - SURVEYS						Out of range
KENNEDY 6-0-21 - CPR WELL - SURVEYS						Out of range
KENNEDY 6-4-21 - CPR WELL - SURVEYS	6,802.32	6,831.71	1,804.78	1,768.27	49.434	CC, ES
KENNEDY 6-4-21 - CPR WELL - SURVEYS	6,900.00	6,926.30	1,808.47	1,771.68	49.158	SF
KENNEDY 8-0-21 - CPR WELL - SURVEYS						Out of range
KENNEDY GAS UNIT 1 - CPR WELL - GYRO						Out of range
LONGMONT 8-10K - TOP OPERATING WELL - NO SUR						Out of range
LONGMONT FARMS 1 - KPK WELL - NO SURVEYS						Out of range
LONGMONT FARMS 3 - KPK WELL - NO SURVEYS						Out of range
MAX SERAFINI 1 - KPK WELL - NO SURVEYS						Out of range
MAX SERAFINI C 1 - KPK WELL - NO SURVEYS						Out of range
MILES 1 - KPK WELL - NO SURVEYS						Out of range
MILES 33-3M - KMG WELL - GYRO	15,116.18	7,387.28	1,328.94	1,189.98	9.564	CC, ES
MILES 33-3M - KMG WELL - GYRO	15,200.00	7,386.73	1,331.58	1,192.03	9.542	SF
MILES 4 - KPK WELL - NO SURVEYS						Out of range
MILES 5 - KPK WELL - NO SURVEYS						Out of range
MILES JOSEPHINE 1 - KPK WELL - NO SURVEYS						Out of range
MILES JOSEPHINE 2 - KPK WELL - NO SURVEYS						Out of range
MILES JOSEPHINE B 1 - KPK WELL - NO SURVEYS						Out of range
MILLER 12-27 - CPR WELL - GYRO						Out of range
MILTON NELSON 1 - KPK WELL - NO SURVEYS	5,054.45	4,960.00	581.97	557.64	23.914	CC, ES
MILTON NELSON 1 - KPK WELL - NO SURVEYS	5,100.00	4,960.00	583.75	559.06	23.637	SF
MILTON NELSON UN-C 1 - KPK WELL - NO SURVEYS	200.00	186.00	1,132.55	1,132.02	2,110.626	CC, ES
MILTON NELSON UN-C 1 - KPK WELL - NO SURVEYS	5,500.00	5,227.00	1,870.95	1,845.61	73.823	SF
MILTON NELSON UNIT 1 - KPK WELL - NO SURVEYS	200.00	184.00	321.11	320.58	598.787	CC, ES
MILTON NELSON UNIT 1 - KPK WELL - NO SURVEYS	5,100.00	4,977.00	1,003.24	980.04	43.235	SF
MLEYNEK 28-10M - KMG WELL - GYRO	12,795.73	7,361.81	995.36	892.75	9.701	CC
MLEYNEK 28-10M - KMG WELL - GYRO	12,800.00	7,361.70	995.37	892.66	9.692	ES
MLEYNEK 28-10M - KMG WELL - GYRO	12,900.00	7,358.97	1,000.80	896.25	9.572	SF
MLEYNEK U 28-10JI - KMG WELL - GYRO	12,016.11	7,384.46	370.98	280.44	4.097	CC, ES, SF
MLEYNEK U 28-15JI - KMG WELL - GYRO	13,672.86	7,396.19	318.35	202.03	2.737	CC, ES

CC - Min centre to center distance or convergent point, SF - min separation factor, ES - min ellipse separation

Cathedral Energy Services

Anticollision Summary Report

Company:	Crestone Peak Resources	Local Co-ordinate Reference:	Well DREAM WEAVER South 3K-21H-N268 - Slot DREAM WEAVER South 3K-21H-N268 SHL
Project:	DJ BASIN	TVD Reference:	23' KB @ 4924.00usft
Reference Site:	S21-T2N-R68W	MD Reference:	23' KB @ 4924.00usft
Site Error:	0.00 usft	North Reference:	True
Reference Well:	DREAM WEAVER South 3K-21H-N268	Survey Calculation Method:	Minimum Curvature
Well Error:	0.00 usft	Output errors are at	2.00 sigma
Reference Wellbore	OH	Database:	USA EDM 5000 Multi Users DB
Reference Design:	PLAN #2	Offset TVD Reference:	Offset Datum

Summary						
Site Name Offset Well - Wellbore - Design	Reference Measured Depth (usft)	Offset Measured Depth (usft)	Distance Between Centres (usft)	Distance Between Ellipses (usft)	Separation Factor	Warning
S21-T2N-R68W (OFFSETS)						
MLEYNEK U 28-15JI - KMG WELL - GYRO	13,700.00	7,396.15	319.51	202.46	2.730	SF
MORGAN-A 4 - KPK WELL - NO SURVEYS						Out of range
NELSON 42-33 /2-68/ 2 - ANADARKO WELL - NO SURV						Out of range
NELSON DUANE E 41-33 (2-68) 1 - CHAMPLIN PETRO						Out of range
NELSON DUANE E 41-33 (2-68) 1-X - KMG WELL - NO						Out of range
NELSON E UNIT 2 - CPR WELL - GYRO						Out of range
NELSON MILTON H 'D' 1 - KMG WELL - GYRO						Out of range
NELSON MILTON H 'M' 1 - KMG WELL - GYRO						Out of range
NELSON MILTON-F 1 - KPK WELL - NO SURVEYS						Out of range
NORTH RINN 0-4-9 - CPR WELL - SURVEYS						Out of range
NORTH RINN 0-6-9 - CPR WELL - SURVEYS						Out of range
NORTH RINN 0-8-9 - CPR WELL - SURVEYS						Out of range
NORTH RINN 13-9 - CPR WELL - SURVEYS						Out of range
NORTH RINN 14-9 - CPR WELL - SURVEYS						Out of range
NORTH RINN 24-9 - CPR WELL - SURVEYS						Out of range
NORTH RINN 2-4-9 - CPR WELL - SURVEYS						Out of range
NORTH RINN 2-6-9 - CPR WELL - SURVEYS						Out of range
OSKARSON 1 - HRM RES II LLC - NO SURVEYS						Out of range
OSKARSON 2 - ENERVEST OP - NO SURVEYS						Out of range
OSKARSON 24-33 - CPR WELL - GYRO	19,076.22	7,404.34	566.46	371.40	2.904	CC, ES, SF
OSKARSON 2-8-33 - CPR WELL - SURVEYS	19,076.22	7,500.28	1,213.01	1,011.99	6.034	CC, ES, SF
OSKARSON 3 - HRM RES II LLC - NO SURVEYS						Out of range
OSKARSON-E 1 - CPR WELL - GYRO	19,000.00	7,364.97	1,760.80	1,570.36	9.246	SF
OSKARSON-E 1 - CPR WELL - GYRO	19,076.22	7,364.33	1,754.02	1,564.76	9.268	CC, ES
OSKARSON-E 2 - CPR WELL - NO SURVEYS	18,255.71	7,424.00	1,441.07	1,255.67	7.773	CC
OSKARSON-E 2 - CPR WELL - NO SURVEYS	18,300.00	7,424.00	1,441.92	1,254.65	7.700	ES
OSKARSON-E 2 - CPR WELL - NO SURVEYS	18,500.00	7,424.00	1,466.75	1,273.13	7.575	SF
RASMUSSEN 3 - PETERSON ENERGY - GYRO						Out of range
RASMUSSEN 1 - PETERSON - GYRO	205.05	233.20	1,585.60	1,585.01	2,667.128	CC, ES
RASMUSSEN 1 - PETERSON - GYRO	2,900.00	2,885.55	1,929.49	1,919.60	195.146	SF
RASMUSSEN 11-28 - CPR WELL - SURVEYS						Out of range
RASMUSSEN 12-28 - CPR WELL - SURVEYS						Out of range
RASMUSSEN 2 - PETERSON ENERGY - NO SURVEYS						Out of range
RASMUSSEN 21-28 - CPR WELL - GYRO	9,406.27	7,304.73	988.54	936.90	19.143	CC, ES
RASMUSSEN 21-28 - CPR WELL - GYRO	9,500.00	7,304.29	992.97	940.53	18.933	SF
RASMUSSEN 22-28 - CPR WELL - GYRO	10,795.58	7,293.06	1,148.25	1,076.50	16.005	CC
RASMUSSEN 22-28 - CPR WELL - GYRO	10,800.00	7,293.11	1,148.25	1,076.47	15.996	ES
RASMUSSEN 22-28 - CPR WELL - GYRO	10,900.00	7,294.29	1,152.98	1,080.54	15.915	SF
RASMUSSEN 2-4-28 - CPR WELL - SURVEYS	11,413.33	7,449.65	1,536.21	1,448.68	17.550	CC, ES
RASMUSSEN 2-4-28 - CPR WELL - SURVEYS	11,600.00	7,436.05	1,547.47	1,458.00	17.296	SF
RASMUSSEN 31-28 - CPR WELL - GYRO	9,467.07	7,340.00	432.44	379.95	8.238	CC, ES
RASMUSSEN 31-28 - CPR WELL - GYRO	9,500.00	7,340.30	433.70	380.52	8.156	SF
RASMUSSEN 32-28 32-28 - CPR WELL - GYRO	10,994.88	7,351.39	203.08	128.14	2.710	CC
RASMUSSEN 32-28 32-28 - CPR WELL - GYRO	11,000.00	7,351.35	203.15	127.96	2.702	ES, SF
RASMUSSEN 4-0-28 - CPR WELL - SURVEYS	8,868.33	7,765.22	101.50	30.99	1.440	Level 3, CC, ES, SF
RASMUSSEN 41-28 - CPR WELL - GYRO	9,522.02	7,374.23	1,828.92	1,775.63	34.316	CC, ES
RASMUSSEN 41-28 - CPR WELL - GYRO	10,100.00	7,363.89	1,918.05	1,856.86	31.344	SF
RASMUSSEN 42-28 - CPR WELL - SURVEYS	11,005.57	7,396.24	1,670.75	1,591.76	21.152	CC, ES
RASMUSSEN 42-28 - CPR WELL - SURVEYS	11,400.00	7,389.86	1,716.66	1,631.83	20.236	SF
RASMUSSEN 4-2-28 - CPR WELL - SURVEYS	10,146.79	7,462.63	151.69	81.27	2.154	CC, ES, SF
RASMUSSEN 4-4-28 - CPR WELL - SURVEYS	11,493.85	7,455.33	280.75	190.81	3.122	CC, ES, SF

CC - Min centre to center distance or convergent point, SF - min separation factor, ES - min ellipse separation

Cathedral Energy Services

Anticollision Summary Report

Company:	Crestone Peak Resources	Local Co-ordinate Reference:	Well DREAM WEAVER South 3K-21H-N268 - Slot DREAM WEAVER South 3K-21H-N268 SHL
Project:	DJ BASIN	TVD Reference:	23' KB @ 4924.00usft
Reference Site:	S21-T2N-R68W	MD Reference:	23' KB @ 4924.00usft
Site Error:	0.00 usft	North Reference:	True
Reference Well:	DREAM WEAVER South 3K-21H-N268	Survey Calculation Method:	Minimum Curvature
Well Error:	0.00 usft	Output errors are at	2.00 sigma
Reference Wellbore	OH	Database:	USA EDM 5000 Multi Users DB
Reference Design:	PLAN #2	Offset TVD Reference:	Offset Datum

Summary						
Site Name	Reference Measured Depth (usft)	Offset Measured Depth (usft)	Distance Between Centres (usft)	Distance Between Ellipses (usft)	Separation Factor	Warning
S21-T2N-R68W (OFFSETS)						
RASMUSSEN 44-29 - KPK WELL - NO SURVEYS						Out of range
RASMUSSEN 4-A - PETERSON ENERGY - GYRO						Out of range
RASMUSSEN C" 2" - CPR WELL - GYRO	10,268.88	7,371.26	1,441.35	1,377.04	22.413	CC
RASMUSSEN C" 2" - CPR WELL - GYRO	10,300.00	7,371.48	1,441.68	1,376.82	22.225	ES
RASMUSSEN C" 2" - CPR WELL - GYRO	10,600.00	7,373.62	1,490.06	1,421.05	21.592	SF
RASMUSSEN-C-UNIT 1 - CPR WELL - GYRO						Out of range
RODGERS 1 - KPK WELL - NO SURVEYS						Out of range
SAUNDERS TRUST 8-2K8 - EXTRACTION WELL - NO						Out of range
SCHLAGEL 2 - EXTRACTION WELL - NO SURVEYS						Out of range
SERAFINI E MAX GU 1 - KMG WELL - GYRO						Out of range
SERAFINI-B 2 - KPK WELL - NO SURVEYS						Out of range
SHAW 1 - KPK WELL - NO SURVEYS						Out of range
SHAW 15-20 - KPK - SURVEYS						Out of range
SHAW 16-20 - KPK - SURVEYS						Out of range
STROMQUIST 1 - KPK WELL - NO SURVEYS						Out of range
STROMQUIST 11-21 - KMG WELL - GYRO	4,537.05	4,440.92	472.58	453.98	25.419	CC, ES
STROMQUIST 11-21 - KMG WELL - GYRO	6,700.00	6,615.07	505.06	473.70	16.109	SF
STROMQUIST 13-21 - KMG WELL - GYRO	0.00	0.00	1,083.19			
STROMQUIST 13-21 - KMG WELL - GYRO	8,800.00	7,344.15	1,906.93	1,865.51	46.041	SF
STROMQUIST 22-21 - KMG WELL - SURVEYS	1,738.17	1,589.16	911.74	906.15	162.923	CC, ES
STROMQUIST 22-21 - KMG WELL - SURVEYS	6,800.00	6,783.68	1,439.98	1,405.25	41.464	SF
STROMQUIST 23-21 - KMG WELL - SURVEYS	7,656.52	7,329.23	241.64	206.10	6.799	CC, ES
STROMQUIST 23-21 - KMG WELL - SURVEYS	7,700.00	7,336.42	245.28	209.03	6.767	SF
STROMQUIST 34-21 - KMG WELL - SURVEYS	0.00	0.00	1,120.27			
STROMQUIST 34-21 - KMG WELL - SURVEYS	200.00	186.83	1,120.47	1,119.84	1,781.164	ES
STROMQUIST 34-21 - KMG WELL - SURVEYS	3,200.00	2,755.12	1,927.50	1,915.57	161.511	SF
STROMQUIST 35-21 - KMG WELL - SURVEYS	227.55	217.58	360.31	359.55	474.524	CC, ES
STROMQUIST 35-21 - KMG WELL - SURVEYS	9,100.00	7,379.18	1,415.78	1,363.34	26.997	SF
TRAVELERS 28-11M - KMG WELL - GYRO	12,563.36	7,338.77	1,541.12	1,442.17	15.575	CC, ES
TRAVELERS 28-11M - KMG WELL - GYRO	12,700.00	7,338.53	1,547.16	1,447.09	15.460	SF
TRAVELERS U 28-13DI - KMG WELL - GYRO						Out of range
UPRC 33-1M - KMG WELL - GYRO	15,242.38	7,435.58	958.80	817.73	6.797	CC, ES
UPRC 33-1M - KMG WELL - GYRO	15,300.00	7,435.71	960.52	818.31	6.754	SF
UPRR 43 PAN AM-B 7 - KPK WELL - NO SURVEYS						Out of range
WESTERN 3-21A - KMG WELL - GYRO						Out of range
WILDFLOWER 12-27 - KMG WELL - SURVEYS						Out of range
WILDFLOWER 33-27 - KMG WELL - SURVEYS						Out of range
WOOLEY UNIT 1 - KPK WELL - NO SURVEYS						Out of range

Cathedral Energy Services

Anticollision Summary Report

Company:	Crestone Peak Resources	Local Co-ordinate Reference:	Well DREAM WEAVER South 3K-21H-N268 - Slot DREAM WEAVER South 3K-21H-N268 SHL
Project:	DJ BASIN	TVD Reference:	23' KB @ 4924.00usft
Reference Site:	S21-T2N-R68W	MD Reference:	23' KB @ 4924.00usft
Site Error:	0.00 usft	North Reference:	True
Reference Well:	DREAM WEAVER South 3K-21H-N268	Survey Calculation Method:	Minimum Curvature
Well Error:	0.00 usft	Output errors are at	2.00 sigma
Reference Wellbore	OH	Database:	USA EDM 5000 Multi Users DB
Reference Design:	PLAN #2	Offset TVD Reference:	Offset Datum

Summary						
Site Name	Reference Measured Depth (usft)	Offset Measured Depth (usft)	Distance Between Centres (usft)	Distance Between Ellipses (usft)	Separation Factor	Warning
Offset Well - Wellbore - Design						
S32-T2N-R68W						
Anderson 22-32 - KPK WELL - NO SURVEYS						Out of range
Anderson 32-32 - CPR WELL - SURVEYS						Out of range
Anderson 41-32 - CPR - GYRO						Out of range
Anderson 4-2-32 - CPR WELL - SURVEYS						Out of range
Anderson 6-4-32 - CPR WELL - SURVEYS						Out of range
Anderson Trust 1 - KPK - NO SURVEYS						Out of range
Anderson Trust 1 A - CPR WELL - GYRO						Out of range
Anderson Trust 2-A - CPR WELL - NO SURVEYS						Out of range
Anderson Trust 32-2 - CPR WELL - GYRO						Out of range
Anderson Trust 32-8 - CPR WELL - GYRO						Out of range
Anderson Trust C 1 - CPR WELL - SURVEYS						Out of range
Anderson Trust C Unit 2 - CPR WELL - GYRO						Out of range
Brown 22-5 - CPR WELL - GYRO						Out of range
Brown 31-5 - CPR WELL - SURVEYS						Out of range
Brown 41-5 - CPR WELL - SURVEYS						Out of range
Brown 5-3 - CPR WELL - GYRO						Out of range
Brown 5-5 - CPR WELL - GYRO						Out of range
Brown C Unit 1 - CPR WELL - GYRO						Out of range
Brown C Unit 2 - CPR WELL - GYRO						Out of range
Bryant 10-30 - KMG WELL - SURVEYS						Out of range
Bryant 16-30 - KMG WELL - SURVEYS						Out of range
Bryant 20-30 - KMG WELL - SURVEYS						Out of range
Bryant 23-30 - KMG WELL - SURVEYS						Out of range
Bryant 24-30 - KMG WELL - SURVEYS						Out of range
Bryant 33-29 - KMG WELL - SURVEYS						Out of range
Bryant 36-30 - KMG WELL - SURVEYS						Out of range
Bryant 8-30 - KMG WELL - SURVEYS						Out of range
Bryant Federal 37-30 - KMG WELL - SURVEYS						Out of range
Bulthaup 1-6 - KMG WELL - GYRO						Out of range
Bulthaup 16-6 - KMG WELL - SURVEYS						Out of range
Bulthaup 17-6 - KMG WELL - SURVEYS						Out of range
Bulthaup 24-6 - KMG WELL - SURVEYS						Out of range
Bulthaup 27-6 - KMG WELL - SURVEYS						Out of range
Bulthaup 39-6 - KMG WELL - SURVEYS						Out of range
Bulthaup 40-6 - KMG WELL - SURVEYS						Out of range
Bulthaup 8-6 - KMG WELL - GYRO						Out of range
Bulthaup 9-6 - KMG WELL - SURVEYS						Out of range
Canino 1-X - HUGHES CW - NO SURVEYS						Out of range
Champlin 86 Amoco F 6 - KPK - NO SURVEYS						Out of range
Champlin 86 N 1 - KMG WELL - GYRO						Out of range
Champlin Amoco 86 F 7 - KPK WELL - SURVEYS						Out of range
Cinque 1 - FOUNDATION WELL - NO SURVEYS						Out of range
Cinque 2 - FOUNDATION WELL - NO SURVEYS						Out of range
Cinque 4 - FOUNDATION WELL - NO SURVEYS						Out of range
FILE 3A-32H-K268 - OH - FINAL						Out of range
FILE 3B-32H-K268 - OH - FINAL						Out of range
FILE 3C-32H-K268 - OH - FINAL						Out of range
FILE 3D-32H-K268 - OH - FINAL						Out of range
FILE 3E-32H-K268 - OH - FINAL						Out of range
FILE 3F-32H-K268 - OH - FINAL						Out of range
FILE 3G-32H-K268 - OH - FINAL						Out of range

CC - Min centre to center distance or convergent point, SF - min separation factor, ES - min ellipse separation

Cathedral Energy Services

Anticollision Summary Report

Company:	Crestone Peak Resources	Local Co-ordinate Reference:	Well DREAM WEAVER South 3K-21H-N268 - Slot DREAM WEAVER South 3K-21H-N268 SHL
Project:	DJ BASIN	TVD Reference:	23' KB @ 4924.00usft
Reference Site:	S21-T2N-R68W	MD Reference:	23' KB @ 4924.00usft
Site Error:	0.00 usft	North Reference:	True
Reference Well:	DREAM WEAVER South 3K-21H-N268	Survey Calculation Method:	Minimum Curvature
Well Error:	0.00 usft	Output errors are at	2.00 sigma
Reference Wellbore	OH	Database:	USA EDM 5000 Multi Users DB
Reference Design:	PLAN #2	Offset TVD Reference:	Offset Datum

Summary						
Site Name	Reference Measured Depth (usft)	Offset Measured Depth (usft)	Distance Between Centres (usft)	Distance Between Ellipses (usft)	Separation Factor	Warning
Offset Well - Wellbore - Design						
S32-T2N-R68W						
FILE 3H-32H-K268 - OH - FINAL						Out of range
FILE 3Q-32H-K268 - OH - FINAL						Out of range
FILE 3R-32H-K268 - OH - FINAL						Out of range
FILE 3S-32H-K268 - OH - FINAL						Out of range
FILE 3T-32H-K268 - OH - FINAL						Out of range
FILE FED 3I-32H-K268 - OH - FINAL						Out of range
FILE FED 3J-32H-K268 - OH - FINAL						Out of range
FILE FED 3K-32H-K268 - OH - FINAL						Out of range
FILE FED 3K-32H-K268 - OH - PLAN #4						Out of range
FILE FED 3L-32H-K268 - OH - FINAL						Out of range
FILE FED 3M-32H-K268 - OH - FINAL						Out of range
FILE FED 3N-32H-K268 - OH - FINAL						Out of range
FILE FED 3O-32H-K268 - OH - FINAL						Out of range
FILE FED 3P-32H-K268 - OH - FINAL						Out of range
Foster 33-5 - CPR WELL - SURVEYS						Out of range
Foster 43-5 - CPR WELL - SURVEYS						Out of range
Foster 4-5 - CPR WELL - SURVEYS						Out of range
Foster 4-6-5 - CPR WELL - SURVEYS						Out of range
Foster 6-4-5 - CPR - SURVEYS						Out of range
Foster 6-4-5X - CPR WELL - SURVEYS						Out of range
Foster 6-8-5 - CPR WELL - SURVEYS						Out of range
Foster 8-8-5 - CPR WELL - SURVEYS						Out of range
Foster E Unit 1 - CPR - GYRO						Out of range
Gene 11-5 - KERR-MCGEE - GYRO						Out of range
Hankins 1 - KPK WELL - NO SURVEYS						Out of range
Hauck 17-29 - KMG WELL - SURVEYS						Out of range
Hauck 24-29 - KMG WELL - SURVEYS						Out of range
Hauck 7-29 - KMG WELL - SURVEYS						Out of range
HSR-Bryant 9-30A - KMG WELL - GYRO						Out of range
HSR-Williams 10-20 - KMG WELL - GYRO						Out of range
HWY52 4A-32H-O268 - OH - FINAL						Out of range
HWY52 4B-32H-O268 - OH - FINAL						Out of range
HWY52 4C-32H-O268 - OH - FINAL						Out of range
HWY52 4D-32H-O268 - OH - FINAL						Out of range
HWY52 4E-32H-O268 - OH - FINAL						Out of range
HWY52 4F-32H-O268 - OH - FINAL						Out of range
HWY52 4G-32H-O268 - OH - FINAL						Out of range
HWY52 4H-32H-O268 - OH - FINAL						Out of range
HWY52 4I-32H-O268 - OH - FINAL						Out of range
HWY52 4J-32H-O268 - OH - FINAL						Out of range
HWY52 4K-32H-O268 - OH - FINAL						Out of range
HWY52 4L-32H-O268 - OH - FINAL						Out of range
HWY52 4M-32H-O268 - OH - FINAL						Out of range
HWY52 4N-32H-O268 - OH - FINAL						Out of range
HWY52 4O-32H-O268 - OH - FINAL						Out of range
HWY52 4P-32H-O268 - OH - FINAL						Out of range
HWY52 4Q-32H-O268 - OH - FINAL						Out of range
HWY52 4R-32H-O268 - OH - FINAL						Out of range
HWY52 4S-32H-O268 - OH - FINAL						Out of range
HWY52 4T-32H-O268 - OH - FINAL						Out of range
HWY52 4U-32H-O268 - OH - FINAL						Out of range

CC - Min centre to center distance or convergent point, SF - min separation factor, ES - min ellipse separation

Cathedral Energy Services

Anticollision Summary Report

Company:	Crestone Peak Resources	Local Co-ordinate Reference:	Well DREAM WEAVER South 3K-21H-N268 - Slot DREAM WEAVER South 3K-21H-N268 SHL
Project:	DJ BASIN	TVD Reference:	23' KB @ 4924.00usft
Reference Site:	S21-T2N-R68W	MD Reference:	23' KB @ 4924.00usft
Site Error:	0.00 usft	North Reference:	True
Reference Well:	DREAM WEAVER South 3K-21H-N268	Survey Calculation Method:	Minimum Curvature
Well Error:	0.00 usft	Output errors are at	2.00 sigma
Reference Wellbore	OH	Database:	USA EDM 5000 Multi Users DB
Reference Design:	PLAN #2	Offset TVD Reference:	Offset Datum

Summary

Site Name Offset Well - Wellbore - Design	Reference Measured Depth (usft)	Offset Measured Depth (usft)	Distance Between Centres (usft)	Distance Between Ellipses (usft)	Separation Factor	Warning
S32-T2N-R68W						
HWY52 4V-32H-O268 - OH - FINAL						Out of range
HWY52 4W-32H-O268 - OH - FINAL						Out of range
Jack Hein Unit 1 - HS RESOURCES WELL - NO SURVE						Out of range
John Lamar 1 - KPK WELL - NO SURVEYS						Out of range
Johnson 32-30 - KPK WELL - NO SURVEYS						Out of range
Johnson 7-30A - KMG WELL - GYRO						Out of range
Kenneth Koch 1 - KPK WELL - NO SURVEYS						Out of range
Kenyon 34-19 - CPR WELL - SURVEYS						Out of range
Kenyon 4-8-19 - CPR WELL - SURVEYS						Out of range
Kenyon 8-4-19 - CPR WELL - SURVEYS						Out of range
Kenyon 8-6-19 - CPR WELL - SURVEYS						Out of range
Kenyon 8-8-19 - CPR WELL - SURVEYS						Out of range
Koch 41-6 - KPK WELL - NO SURVEYS						Out of range
Koch Kenneth E A-1 - KMG WELL - SURVEY						Out of range
Milton H Nelson H-1 - KMG WELL - GYRO						Out of range
Milton H Nelson I1 - KMG WELL - GYRO						Out of range
Milton H Nelson L1 - KMG WELL - GYRO						Out of range
Milton Nelson K1 - KMG WELL - GYRO						Out of range
Nelson 1 - TEXAS TEA - NO SURVEYS						Out of range
Nelson 1-A - TEXAS TEA WELL - NO SURVEYS						Out of range
Nelson 2 - TEXAS TEA WELL - NO SURVEYS						Out of range
Nelson 3 - TEXAS TEA WELL - NO SURVEYS						Out of range
Nelson 4 - TEXAS TEA WELL - NO SURVEYS						Out of range
Nelson 5 - TEXAS TEA WELL - NO SURVEYS						Out of range
Nelson D2 - KPK WELL - NO SURVEYS						Out of range
Nelson E Unit 1 - CPR WELL - GYRO						Out of range
Nelson E Unit 2 - CPR WELL - GYRO						Out of range
NOAA Federal 11-32 - CPR WELL - GYRO						Out of range
Oskarson 2-8-33 - CPR WELL - SURVEYS	19,076.22	7,500.29	1,214.81	1,006.98	5.845	CC, ES, SF
Oskarson 13-33 - CPR - GYRO						Out of range
Oskarson 23-33 - CPR WELL - GYRO	17,322.84	7,421.39	972.42	804.04	5.775	CC, ES, SF
Oskarson 4 - HRM - NO SURVEYS						Out of range
Oskarson 4-4-33 - CPR WELL - SURVEYS	16,881.23	7,885.42	343.69	157.01	1.841	CC
Oskarson 4-4-33 - CPR WELL - SURVEYS	16,900.00	7,885.17	344.20	156.47	1.833	ES, SF
Oskarson 4-6-33 - CPR WELL - SURVEYS	18,172.17	7,656.16	234.97	47.84	1.256	Level 3, CC, ES, SF
Oskarson 4-8-33 - CPR WELL - SURVEYS	19,076.22	7,694.98	408.78	341.21	6.050	CC, ES, SF
Oskarson E Unit 1 - CPR WELL - GYRO	19,000.00	7,355.36	1,758.75	1,572.17	9.426	SF
Oskarson E Unit 1 - CPR WELL - GYRO	19,076.22	7,354.74	1,751.76	1,566.32	9.446	CC, ES
Paquette 13-5 - KMG WELL - GYRO						Out of range
Paquette 14-5 - KERR-MCGEE - GYRO						Out of range
Rasmussen 10-29 - KMG WELL - SURVEYS						Out of range
Rasmussen 14-29 - KMG WELL - SURVEYS						Out of range
Rasmussen 16-29 - KMG WELL - SURVEYS						Out of range
Rasmussen 19-29 - KMG WELL - SURVEYS						Out of range
Rasmussen 20-29 - KMG WELL - SURVEYS						Out of range
Rasmussen 22-29 - KMG WELL - SURVEYS						Out of range
Rasmussen 23-29 - KMG WELL - SURVEYS						Out of range
Rasmussen 25-29 - KMG WELL - SURVEYS						Out of range
Rasmussen 36-29 - KMG WELL - SURVEYS						Out of range
Rasmussen 37-29 - KMG WELL - SURVEYS						Out of range
Rasmussen 39-29 - KMG WELL - SURVEYS						Out of range

CC - Min centre to center distance or convergent point, SF - min separation factor, ES - min ellipse separation

Cathedral Energy Services

Anticollision Summary Report

Company:	Crestone Peak Resources	Local Co-ordinate Reference:	Well DREAM WEAVER South 3K-21H-N268 - Slot DREAM WEAVER South 3K-21H-N268 SHL
Project:	DJ BASIN	TVD Reference:	23' KB @ 4924.00usft
Reference Site:	S21-T2N-R68W	MD Reference:	23' KB @ 4924.00usft
Site Error:	0.00 usft	North Reference:	True
Reference Well:	DREAM WEAVER South 3K-21H-N268	Survey Calculation Method:	Minimum Curvature
Well Error:	0.00 usft	Output errors are at	2.00 sigma
Reference Wellbore	OH	Database:	USA EDM 5000 Multi Users DB
Reference Design:	PLAN #2	Offset TVD Reference:	Offset Datum

Summary

Site Name Offset Well - Wellbore - Design	Reference Measured Depth (usft)	Offset Measured Depth (usft)	Distance Between Centres (usft)	Distance Between Ellipses (usft)	Separation Factor	Warning
S32-T2N-R68W						
Rasmussen Fed 35-29 - KMG WELL - SURVEYS						Out of range
Ray Nelson 0-4-32 - CPR WELL - SURVEYS						Out of range
Ray Nelson 12-32 - CPR WELL - GYRO						Out of range
Ray Nelson 13-32 - CPR WELL - SURVEYS						Out of range
Ray Nelson 14-32 - CPR WELL - SURVEYS						Out of range
Ray Nelson 23-32 - CPR WELL - GYRO						Out of range
Ray Nelson 24-32 - CPR WELL - SURVEYS						Out of range
Ray Nelson 2-4-32 - CPR WELL - SURVEYS						Out of range
Ray Nelson 33-32 - CPR WELL - SURVEYS						Out of range
Ray Nelson 34-32 - CPR WELL - SURVEYS						Out of range
Ray Nelson 44-32 - CPR WELL - SURVEYS						Out of range
Ray Nelson 4-4-32 - CPR WELL - SURVEYS						Out of range
Ray Nelson 4-6-32 - CPR WELL - SURVEYS						Out of range
Ray Nelson 8-8-32 - CPR WELL - SURVEYS						Out of range
Regnier Farms 32-19 - CPR WELL - GYRO						Out of range
Regnier Farms 33-19 - CPR WELL - GYRO						Out of range
Regnier Farms 42-19 - CPR WELL - GYRO						Out of range
Regnier Farms 43-19 - CPR WELL - SURVEYS						Out of range
Regnier Farms B 2 - CPR WELL - GYRO						Out of range
Regnier Farms B Unit 1 - CPR WELL - GYRO						Out of range
Sawdey Unit 2 - KMG WELL - GYRO						Out of range
Schriner 11-5 - KMG WELL - GYRO						Out of range
Schriner 12-5 - KMG WELL - GYRO						Out of range
SEC Four 12-4 - KMG WELL - SURVEYS						Out of range
SEC Four 13-4 - KMG WELL - SURVEYS						Out of range
SEC Four 14-4 - KMG WELL - SURVEYS						Out of range
SEC Four 21-4 - KMG WELL - SURVEYS	19,076.22	7,550.30	1,795.85	1,733.92	28.996	CC, ES, SF
SEC Four 22-4 - KMG WELL - SURVEYS						Out of range
SEC Four 31-4 - KMG WELL - SURVEYS						Out of range
SEC Four 32-4 - KMG WELL - SURVEYS						Out of range
SEC Four 33-4 - KMG WELL - SURVEYS						Out of range
SEC Four 3-4 - KMG WELL - SURVEYS	19,076.22	7,532.49	1,299.35	1,181.32	11.009	CC, ES, SF
SEC Four 35-4 - KMG WELL - SURVEYS						Out of range
SEC Four 4-4 - KMG WELL - SURVEYS						Out of range
SEC Four 5-4 - KMG WELL - SURVEYS						Out of range
SEC Four 6-4 - KMG WELL - SURVEYS						Out of range
Shaw 11-29A - KMG WELL - SURVEYS						Out of range
Shaw 12-29A - KMG - GYRO						Out of range
Shaw 15-20 - KPK - SURVEYS						Out of range
Shaw 16-20 - KPK - SURVEYS						Out of range
Tallgrass 1-8 - KMG - SURVEYS						Out of range
Tallgrass 2-8 - KMG - SURVEYS						Out of range
Tallgrass 3-8 - KMG - SURVEYS						Out of range
Tallgrass 4-8 - KMG - SURVEYS						Out of range
Tallgrass 5-8 - KMG - SURVEYS						Out of range
Tallgrass 6-8 - KMG WELL - SURVEYS						Out of range
Williams 10-20 - KMG WELL - SURVEYS						Out of range
Williams 11-20 - KMG WELL - SURVEYS						Out of range
Williams 13-20 - KMG WELL - SURVEYS						Out of range
Williams 14-20 - KMG WELL - SURVEYS						Out of range
Williams 16-20 - KMG WELL - SURVEYS						Out of range

CC - Min centre to center distance or convergent point, SF - min separation factor, ES - min ellipse separation

Cathedral Energy Services

Anticollision Summary Report

Company:	Crestone Peak Resources	Local Co-ordinate Reference:	Well DREAM WEAVER South 3K-21H-N268 - Slot DREAM WEAVER South 3K-21H-N268 SHL
Project:	DJ BASIN	TVD Reference:	23' KB @ 4924.00usft
Reference Site:	S21-T2N-R68W	MD Reference:	23' KB @ 4924.00usft
Site Error:	0.00 usft	North Reference:	True
Reference Well:	DREAM WEAVER South 3K-21H-N268	Survey Calculation Method:	Minimum Curvature
Well Error:	0.00 usft	Output errors are at	2.00 sigma
Reference Wellbore	OH	Database:	USA EDM 5000 Multi Users DB
Reference Design:	PLAN #2	Offset TVD Reference:	Offset Datum

Summary						
Site Name	Reference Measured Depth (usft)	Offset Measured Depth (usft)	Distance Between Centres (usft)	Distance Between Ellipses (usft)	Separation Factor	Warning
Offset Well - Wellbore - Design						
S32-T2N-R68W						
Williams 18-29 - KMG WELL - SURVEYS						Out of range
Williams 23-20 - KMG WELL - SURVEYS						Out of range
Williams 24-20 - KMG WELL - SURVEYS						Out of range
Williams 24-20X - KMG WELL - SURVEYS						Out of range
Williams 25-20 - KMG WELL - SURVEYS						Out of range
Williams 35-20 - KMG WELL - SURVEYS						Out of range
Williams 36-20 - KMG WELL - SURVEYS						Out of range
Williams 39-20 - KMG WELL - SURVEYS						Out of range
Williams 4-29 - KMG WELL - SURVEYS						Out of range
Williams 7-20 - KMG WELL - SURVEYS						Out of range
Williams 8-20 - KMG WELL - SURVEYS						Out of range
Williams 9-20 - KMG WELL - SURVEYS						Out of range
Woolley 41-7 - CPR WELL - GYRO						Out of range
Woolley 42-7 KPK - KPK WELL - SURVEYS						Out of range

Cathedral Energy Services

Anticollision Summary Report

Company:	Crestone Peak Resources	Local Co-ordinate Reference:	Well DREAM WEAVER South 3K-21H-N268 - Slot DREAM WEAVER South 3K-21H-N268 SHL
Project:	DJ BASIN	TVD Reference:	23' KB @ 4924.00usft
Reference Site:	S21-T2N-R68W	MD Reference:	23' KB @ 4924.00usft
Site Error:	0.00 usft	North Reference:	True
Reference Well:	DREAM WEAVER South 3K-21H-N268	Survey Calculation Method:	Minimum Curvature
Well Error:	0.00 usft	Output errors are at	2.00 sigma
Reference Wellbore	OH	Database:	USA EDM 5000 Multi Users DB
Reference Design:	PLAN #2	Offset TVD Reference:	Offset Datum

Summary

Site Name Offset Well - Wellbore - Design	Reference Measured Depth (usft)	Offset Measured Depth (usft)	Distance Between Centres (usft)	Distance Between Ellipses (usft)	Separation Factor	Warning
S7-T1N-R68W (Woolley-S/B/Morgan Hills)						
BAILEY 8-8-1 (EXISTING) - CPR WELL - SURVEYS						Out of range
BEARDEN 0-6-6 (EXISTING) - CPR WELL - SURVEYS						Out of range
BEARDEN 1 (EXISTING) - CPR WELL - GYRO						Out of range
BEARDEN 13-6 (EXISTING) - CPR WELL - SURVEYS						Out of range
BEARDEN 14-6 (EXISTING) - CPR WELL - SURVEYS						Out of range
BEARDEN 23-6 (EXISTING) - ENCANA WELL - GYRO						Out of range
BEARDEN 24-6 (EXISTING) - CPR WELL - CPR WELL						Out of range
BEARDEN 2-4-6 (EXISTING) - CPR WELL - SURVEYS						Out of range
BEARDEN 2-8-6 (EXISTING) - CPR WELL - SURVEYS						Out of range
BECKY 1 (EXISTING) - FOUNDATION WELL - NO SUR						Out of range
BECKY 2-6 (EXISTING) - EXTRACTION WELL - GYRO						Out of range
BECKY 5-6 (EXISTING) - FOUNDATION WELL - NO SU						Out of range
BECKY 7-6 (EXISTING) - EXTRACTION WELL - GYRO						Out of range
BILLINGS 21-7 (EXISTING) - KPK WELL - SURVEYS						Out of range
BULTHAUP 10-6 (EXISTING) - KMG WELL - SURVEYS						Out of range
BULTHAUP 15-6 (EXISTING) - KMG WELL - GYRO						Out of range
BULTHAUP 17-6 (EXISTING) - KMG WELL - SURVEYS						Out of range
BULTHAUP 21-6 (EXISTING) - KMG WELL - SURVEYS						Out of range
BULTHAUP 23-6 (EXISTING) - KMG WELL - SURVEYS						Out of range
BULTHAUP 27-6 (EXISTING) - KMG WELL - SURVEYS						Out of range
CANYON CREEK 43-13 (EXISTING) - CPR WELL - SUR						Out of range
CANYON CREEK 8-6-13X (EXISTING) - CPR WELL - S						Out of range
CHAMPLIN-86-AMOCO 1 (EXISTING) - AMOCO - SURV						Out of range
COAL CREEK 6-0-19 (EXISTING) - CPR WELL - STK						Out of range
COAL CREEK 6-0-19 (EXISTING) - OH - SURVEYS						Out of range
COMMONS 28-19 (EXISTING) - KMG WELL - SURVEYS						Out of range
ERIE CHAMPLIN 18-9 (EXISTING) - EXISTING - SURVE						Out of range
ERIE CHAMPLIN B UNIT 1 - CPR WELL - GYRO						Out of range
ERIE CHAMPLIN B UNIT 2 - CPR WELL - GYRO						Out of range
I & J 7-6 (EXISTING) - KMG WELL - GYRO						Out of range
Morgan Hills 1A-7H-A168 - HZ - FINAL						Out of range
Morgan Hills 1B-7H-A168 - HZ - FINAL						Out of range
Morgan Hills 1C-7H-A168 - HZ - FINAL						Out of range
Morgan Hills 1D-7H-A168 - HZ - FINAL						Out of range
Morgan Hills 1E-7H-A168 - HZ - FINAL						Out of range
Morgan Hills 1F-7H-A168 - HZ - FINAL						Out of range
Morgan Hills 1G-7H-A168 - HZ - FINAL						Out of range
Morgan Hills 1H-7H-A168 - HZ - FINAL						Out of range
Morgan Hills 1I-7H-A168 - OH - FINAL						Out of range
SOSA 11-18 (EXISTING) - CPR WELL - SURVEYS						Out of range
SOSA 12-18 (EXISTING) - CPR WELL - SURVEYS						Out of range
SOSA 21-18 (EXISTING) - CPR WELL - SURVEYS						Out of range
SOSA 22-18 (EXISTING) - CPR WELL - SURVEYS						Out of range
SOSA A UNIT 1 (EXISTING) - CPR WELL - GYRO						Out of range
TALLGRASS 33-17 (EXISTING) - KMG WELL - SURVEY						Out of range
THOMAS 14-7(EXISTING) - CPR WELL - SURVEYS						Out of range
THOMAS 24-7 (EXISTING) - CPR WELL - SURVEYS						Out of range
THOMAS 2-8-7 (EXISTING) - CPR WELL - SURVEYS						Out of range
THOMAS 33-7 (EXISTING) - CPR WELL - SURVEYS						Out of range
THOMAS 7-12 (EXISTING) - CPR WELL - GYRO						Out of range
Thomas 7-14 (AL) - Existing - NO SURVEYS						Out of range

CC - Min centre to center distance or convergent point, SF - min separation factor, ES - min ellipse separation

Cathedral Energy Services

Anticollision Summary Report

Company:	Crestone Peak Resources	Local Co-ordinate Reference:	Well DREAM WEAVER South 3K-21H-N268 - Slot DREAM WEAVER South 3K-21H-N268 SHL
Project:	DJ BASIN	TVD Reference:	23' KB @ 4924.00usft
Reference Site:	S21-T2N-R68W	MD Reference:	23' KB @ 4924.00usft
Site Error:	0.00 usft	North Reference:	True
Reference Well:	DREAM WEAVER South 3K-21H-N268	Survey Calculation Method:	Minimum Curvature
Well Error:	0.00 usft	Output errors are at	2.00 sigma
Reference Wellbore	OH	Database:	USA EDM 5000 Multi Users DB
Reference Design:	PLAN #2	Offset TVD Reference:	Offset Datum

Summary						
Site Name	Reference Measured Depth (usft)	Offset Measured Depth (usft)	Distance Between Centres (usft)	Distance Between Ellipses (usft)	Separation Factor	Warning
Offset Well - Wellbore - Design						
S7-T1N-R68W (Woolley-S/B/Morgan Hills)						
THOMAS E UNIT 1 (EXISTING) - CPR WELL - GYRO						Out of range
THOMAS E UNIT 2 - VESSELS WELL - INC ONLY						Out of range
THOMAS K UNIT 1 (EXISTING) - EXISTING - NO SURV						Out of range
WHEELER G UNIT 1 - CPR - GYRO						Out of range
WIGGETT 13-1 - CPR - GYRO						Out of range
WIGGETT 8-2-13 (EXISTING) - CPR WELL - SURVEYS						Out of range
WOOLLEY 11-7 (EXISTING) - CPR WELL - SURVEYS						Out of range
WOOLLEY 12-7 (EXISTING) - CPR WELL - GYRO						Out of range
WOOLLEY 21-7 (EXISTING) - CPR WELL - GYRO						Out of range
WOOLLEY 22-7 (EXISTING) - CPR WELL - SURVEYS						Out of range
WOOLLEY 2-4-7 (EXISTING) - CPR WELL - SURVEYS						Out of range
WOOLLEY 4-0-7 (EXISTING) - CPR WELL - SURVEYS						Out of range
WOOLLEY 41-7 (EXISTING) - CPR WELL - GYRO						Out of range
WOOLLEY 42-7 (EXISTING) - CPR WELL - GYRO						Out of range
WOOLLEY 42-7 KPK (EXISTING) - KPK WELL - SURVE						Out of range
WOOLLEY A 1-7 (EXISTING) - CPR WELL - GYRO						Out of range
WOOLLEY F UNIT 1 (EXISTING) - CPR WELL - GYRO						Out of range
Woolley-Becky 2A-7H-E168 - Hz - FINAL						Out of range
Woolley-Becky 2B-7H-E168 - Hz - FINAL						Out of range
Woolley-Becky 2C-7H-E168 - Hz - FINAL						Out of range
Woolley-Becky 2D-7H-E168 - Hz - FINAL						Out of range
Woolley-Becky 2E-7H-E168 - Hz - FINAL						Out of range
Woolley-Becky 2F-7H-E168 - Hz - FINAL						Out of range
Woolley-Becky 2G-7H-E168 - Hz - FINAL						Out of range
Woolley-Becky 2H-7H-E168 - Hz - FINAL						Out of range
Woolley-Sosa 2A-7H-E168 - OH - FINAL						Out of range
Woolley-Sosa 2B-7H-E168 - HZ - FINAL						Out of range
Woolley-Sosa 2C-7H-E168 - HZ - FINAL						Out of range
Woolley-Sosa 2D-7H-E168 - HZ - FINAL						Out of range
Woolley-Sosa 2E-7H-E168 - HZ - FINAL						Out of range
Woolley-Sosa 2F-7H-E168 - HZ - FINAL						Out of range
Woolley-Sosa 2G-7H-E168 - HZ - FINAL						Out of range

Cathedral Energy Services

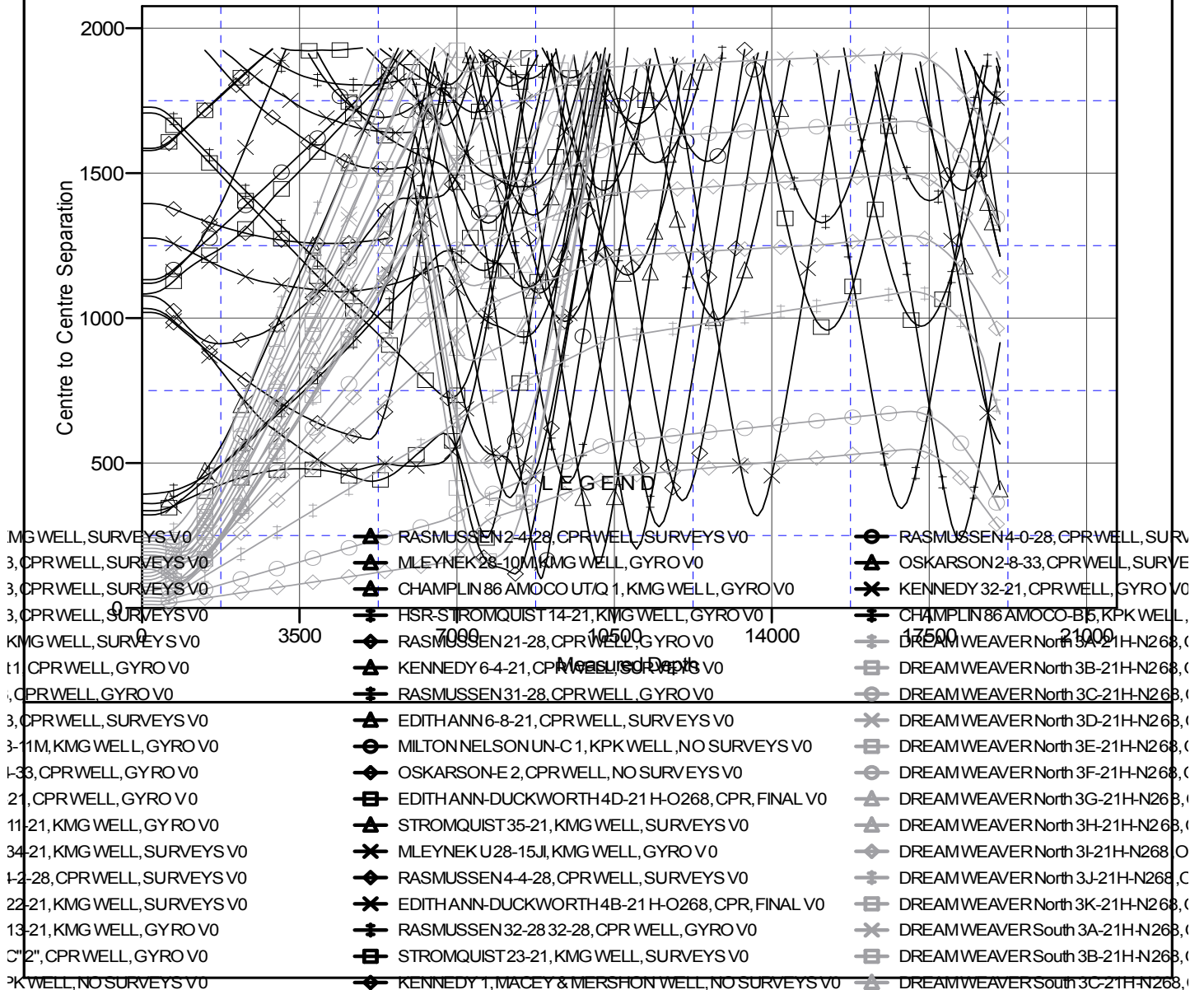
Anticollision Summary Report

Company:	Crestone Peak Resources	Local Co-ordinate Reference:	Well DREAM WEAVER South 3K-21H-N268 - Slot DREAM WEAVER South 3K-21H-N268 SHL
Project:	DJ BASIN	TVD Reference:	23' KB @ 4924.00usft
Reference Site:	S21-T2N-R68W	MD Reference:	23' KB @ 4924.00usft
Site Error:	0.00 usft	North Reference:	True
Reference Well:	DREAM WEAVER South 3K-21H-N268	Survey Calculation Method:	Minimum Curvature
Well Error:	0.00 usft	Output errors are at	2.00 sigma
Reference Wellbore	OH	Database:	USA EDM 5000 Multi Users DB
Reference Design:	PLAN #2	Offset TVD Reference:	Offset Datum

Reference Depths are relative to 23' KB @ 4924.00usft
Offset Depths are relative to Offset Datum
Central Meridian is -105.500000

Coordinates are relative to: DREAM WEAVER South 3K-21H-N268 - Slot DREAM
Coordinate System is US State Plane 1983, Colorado Northern Zone
Grid Convergence at Surface is: 0.32°

Ladder Plot



CC - Min centre to center distance or convergent point, SF - min separation factor, ES - min ellipse separation

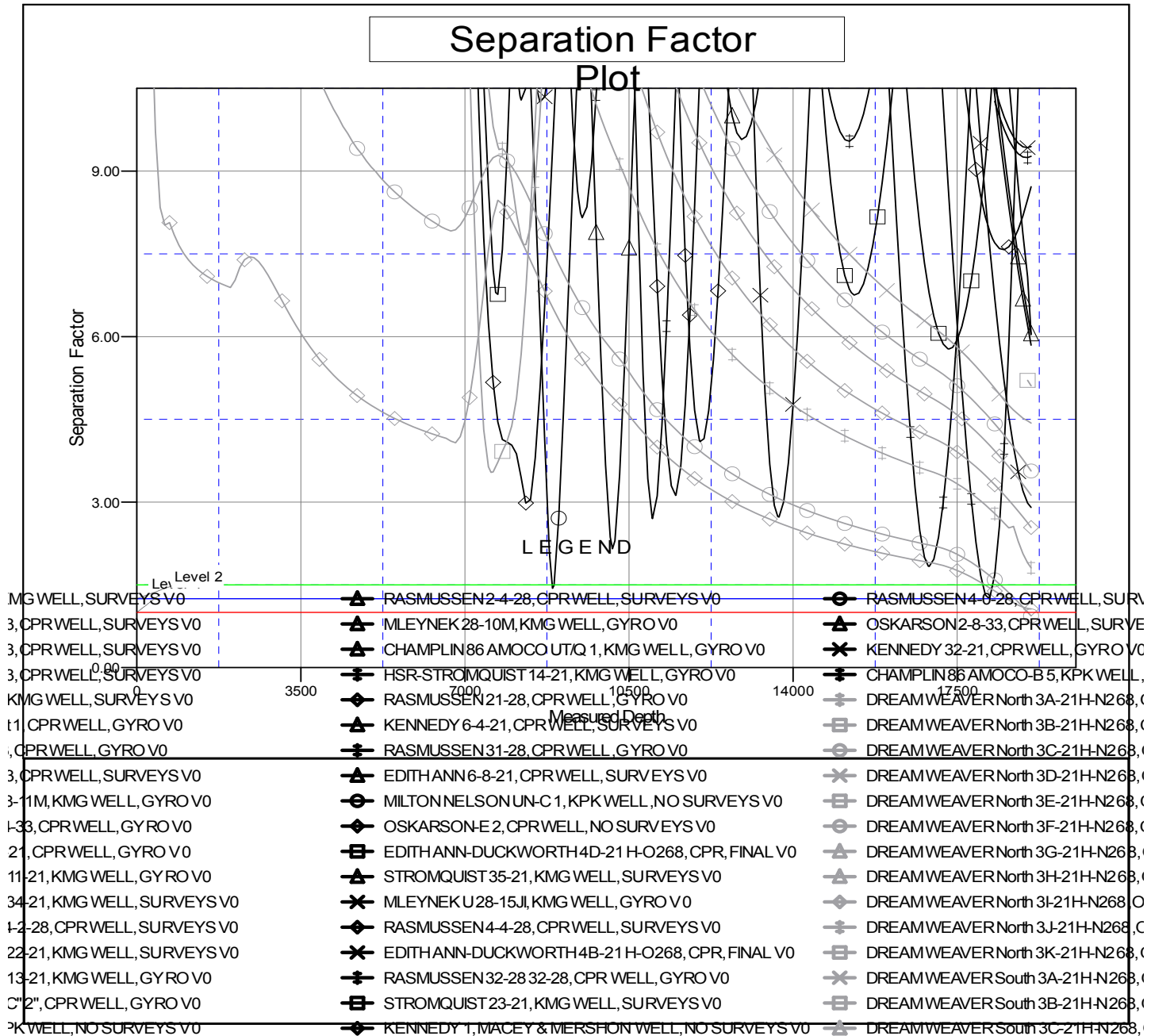
Cathedral Energy Services

Anticollision Summary Report

Company:	Crestone Peak Resources	Local Co-ordinate Reference:	Well DREAM WEAVER South 3K-21H-N268 - Slot DREAM WEAVER South 3K-21H-N268 SHL
Project:	DJ BASIN	TVD Reference:	23' KB @ 4924.00usft
Reference Site:	S21-T2N-R68W	MD Reference:	23' KB @ 4924.00usft
Site Error:	0.00 usft	North Reference:	True
Reference Well:	DREAM WEAVER South 3K-21H-N268	Survey Calculation Method:	Minimum Curvature
Well Error:	0.00 usft	Output errors are at	2.00 sigma
Reference Wellbore	OH	Database:	USA EDM 5000 Multi Users DB
Reference Design:	PLAN #2	Offset TVD Reference:	Offset Datum

Reference Depths are relative to 23' KB @ 4924.00usft
Offset Depths are relative to Offset Datum
Central Meridian is -105.500000

Coordinates are relative to: DREAM WEAVER South 3K-21H-N268 - Slot DREAM
Coordinate System is US State Plane 1983, Colorado Northern Zone
Grid Convergence at Surface is: 0.32°



CC - Min centre to center distance or convergent point, SF - min separation factor, ES - min ellipse separation