

LEGEND:

- = 90° SYMBOL
 ● = PROPOSED WELLHEAD.
 ○ = TARGET BOTTOM HOLE.
 ▲ = SECTION CORNERS LOCATED. (NAD 83)
 △ = SECTION CORNERS RE-ESTABLISHED. (Not Set on Ground.) (NAD 83)

T7S, R96W, 6th P.M.

SW Cor Sec 15
C.C. 1920 Brass Cap,
1.2' High
Lat: 39.430331°
Long: 108.103414°

**Target
Bottom Hole**

True Position
Lat: 39.430297°
Long: 108.096260°

N89°47'58"W - 2641.41'
(Meas. to True)

N89°47'58"W - 2542.41'
(Meas. to W.C.)

True Position
Lat: 39.430323° 84.48'
Long: 108.105692° (G.L.O.)

True Position
Lat: 39.430098°
Long: 108.105692°

NE Cor Sec 21
C.C. 1920 Brass
Cap, 1.2' High
Lat: 39.430097°
Long: 108.105656°

W.C. 1920 Brass Cap,
0.4' High, Stones
Lat: 39.430294°
Long: 108.095908°
99.00'
(G.L.O.)

1982 Brass Cap,
0.3' High
Lat: 39.430269°
Long: 108.086911°

LOT 1
1982 Alum. Cap,
Flush w/ Ground
Mound of Stones
Lat: 39.426617°
Long: 108.086956°

FEDERAL SG 324-15
Elev. Ungraded Ground = 6087.5'

N00°00'30"W - 2644.90'
(Meas. to True)

N00°00'30"W - 2658.39' (Meas.)

LOT 4
1920 Brass Cap,
Flush W/Ground
Lat: 39.423064°
Long: 108.105692°

LOT 4

LOT 5

LOT 6

LOT 7

1982 Brass Cap,
0.2' High, Mound
of Stones, Post
Lat: 39.422958°
Long: 108.087003°

N00°32'05"E
1331.33' (Meas.)

N00°32'09"E
1332.45' (Meas.)

N00°16'57"E - 2537.44' (Meas.)

22

NOTE:
SEE LOCATION DRAWING PLAT #6 FOR
EXISTING IMPROVEMENTS WITHIN 500'
OF THE PROPOSED WELLHEAD.

NOTE:
THE PROPOSED TARGET BOTTOM HOLE FOR
THIS WELL IS LOCATED IN LOT 5 OF
SECTION 15, T7S, R96W, 6th P.M. AT 171'
FSL 2357' FEL. IT BEARS N66°02'11"E
2667.24' FROM THE PROPOSED WELLHEAD.

LOT 9

LOT 8

LOT 10

LOT 11

1982 Brass Cap,
0.2' High, Mound
of Stones
Lat: 39.415822°
Long: 108.101033°

1982 Alum. Cap,
0.3' High, Mound
of Stones
Lat: 39.415875°
Long: 108.096378°

1982 Brass Cap,
1.4' High, Mound
of Stones
Lat: 39.415994°
Long: 108.087047°

1982 Brass Cap,
1.0' High, Mound
of Stones
Lat: 39.415767°
Long: 108.105689°

S89°08'01"W
1316.18' (Meas.)

S89°09'39"W
1316.04' (Meas.)

S89°02'02"W - 2636.83' (Meas.)

PDOP = 1.4

NAD 83 (SURFACE LOCATION)
LATITUDE = 39°25'40.04" (39.427790)
LONGITUDE = 108°06'13.96" (108.103878)
STATE PLANE NAD 83 (CO. CEN.)
N: 1591242.44 E: 2264573.06



PLAT #1

CERTIFICATE

THIS IS TO CERTIFY THAT THE ABOVE PLAT WAS PREPARED AND THE LOCATION AS SHOWN WAS STAKED ON THE GROUND FROM FIELD NOTES OF ACTUAL SURVEYS MADE BY ME OR UNDER MY SUPERVISION AND THAT THE SAME ARE TRUE AND CORRECT TO THE BEST OF MY KNOWLEDGE AND BELIEF.

REGISTERED LAND SURVEYOR
REGISTRATION NO. 80180
STATE OF COLORADO

04-10-18

REV: 2 04-09-18 T.L.L. (NAME CHANGE)

BASIS OF BEARINGS

BASIS OF BEARINGS IS A G.P.S. OBSERVATION

BASIS OF ELEVATION

SPOT ELEVATION AT THE NORTHWEST CORNER OF SECTION 30, T7S, R95W, 6th P.M., TAKEN FROM THE FORKED GULCH, QUADRANGLE, COLORADO, GARFIELD COUNTY, 7.5 MINUTE QUAD. (TOPOGRAPHIC MAP) PUBLISHED BY THE UNITED STATES DEPARTMENT OF THE INTERIOR, GEOLOGICAL SURVEY. SAID ELEVATION IS MARKED AS BEING 5966 FEET.

UELS, LLC

Corporate Office * 85 South 200 East
Vernal, UT 84078 * (435) 789-1017



TEP Rocky Mountain LLC

FEDERAL SG 324-15 (SURFACE LOCATION)
NW 1/4 NW 1/4, SECTION 22, T7S, R96W, 6th P.M.
GARFIELD COUNTY, COLORADO

SURVEYED BY	BART HUNTING, C.R.	02-16-18	SCALE
DRAWN BY	M.D.	02-24-18	1" = 1000'

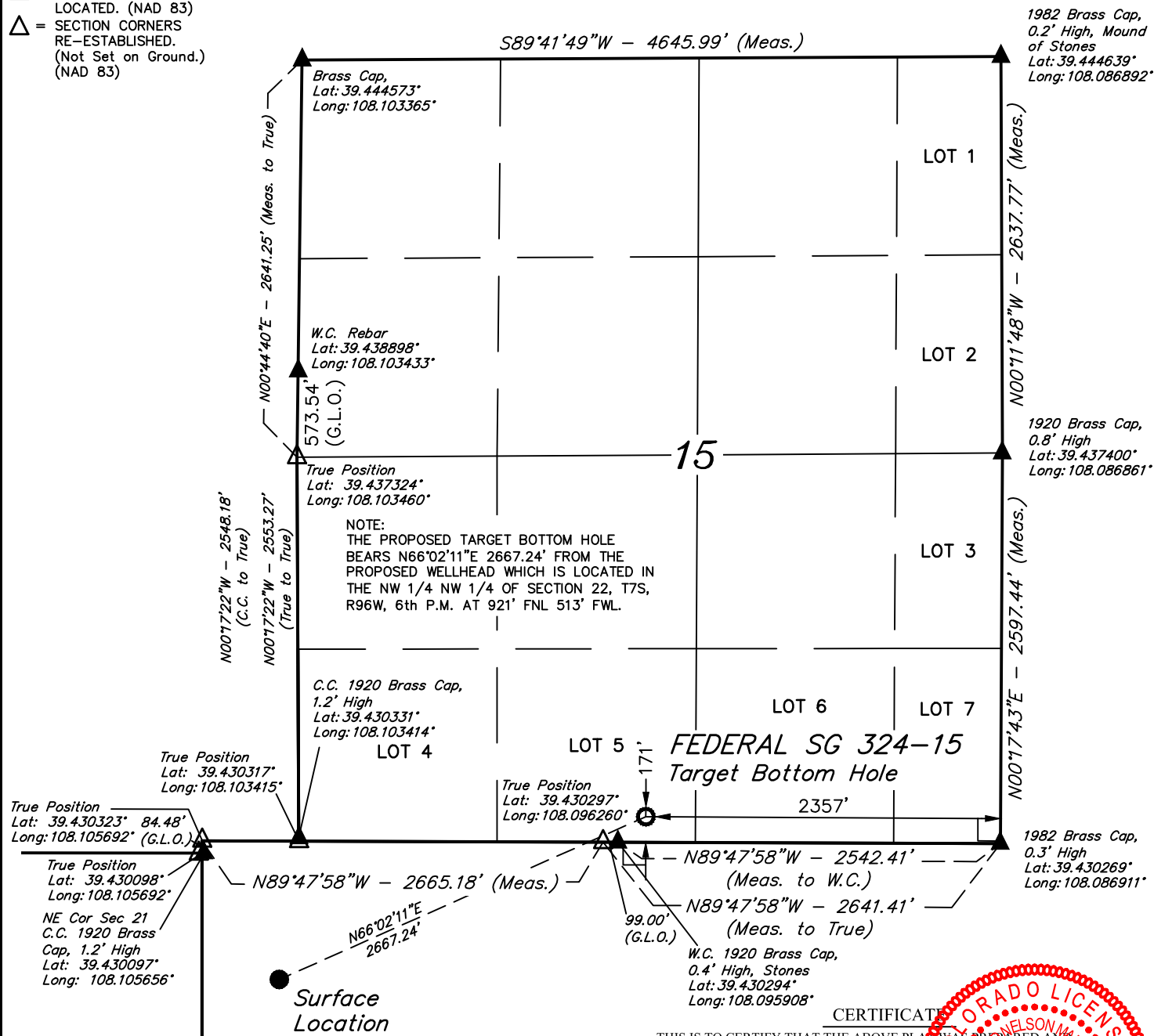
WELL LOCATION PLAT



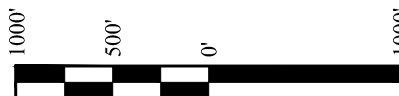
LEGEND:

- = 90° SYMBOL
 ● = PROPOSED WELLHEAD.
 ○ = TARGET BOTTOM HOLE.
 ▲ = SECTION CORNERS LOCATED. (NAD 83)
 △ = SECTION CORNERS RE-ESTABLISHED. (Not Set on Ground.) (NAD 83)

T7S, R96W, 6th P.M.



NAD 83 (TARGET BOTTOM HOLE)
LATITUDE = 39°25'50.74" (39.430762)
LONGITUDE = 108°05'42.91" (108.095252)
STATE PLANE NAD 83 (CO. CEN.)
N: 1592255.00 E: 2267039.69



PLAT #1

REV: 2 04-09-18 T.L.L. (NAME CHANGE)

BASIS OF BEARINGS
BASIS OF BEARINGS IS A G.P.S. OBSERVATION

BASIS OF ELEVATION

SPOT ELEVATION AT THE NORTHWEST CORNER OF SECTION 30, T7S, R95W, 6th P.M., TAKEN FROM THE FORKED GULCH, QUADRANGLE, COLORADO, GARFIELD COUNTY, 7.5 MINUTE QUAD. (TOPOGRAPHIC MAP) PUBLISHED BY THE UNITED STATES DEPARTMENT OF THE INTERIOR, GEOLOGICAL SURVEY. SAID ELEVATION IS MARKED AS BEING 5966 FEET.

UELS, LLC

Corporate Office * 85 South 200 East
Vernal, UT 84078 * (435) 789-1017



TEP Rocky Mountain LLC

FEDERAL SG 324-15 (TARGET BOTTOM HOLE)
LOT 5, SECTION 15, T7S, R96W, 6th P.M.
GARFIELD COUNTY, COLORADO

SURVEYED BY	BART HUNTING, C.R.	02-16-18	SCALE
DRAWN BY	M.D.	02-24-18	1" = 1000'

WELL LOCATION PLAT

CERTIFICATE
THIS IS TO CERTIFY THAT THE ABOVE PLAT WAS PREPARED AND THE LOCATION AS SHOWN WAS STAKED ON THE GROUND FROM FIELD NOTES OF ACTUAL SURVEYS MADE BY ME OR UNDER MY SUPERVISION AND THAT THE SAME ARE TRUE AND CORRECT TO THE BEST OF MY KNOWLEDGE AND BELIEF.

REGISTERED LAND SURVEYOR
REGISTRATION # 38130
STATE OF COLORADO 04-10-18

