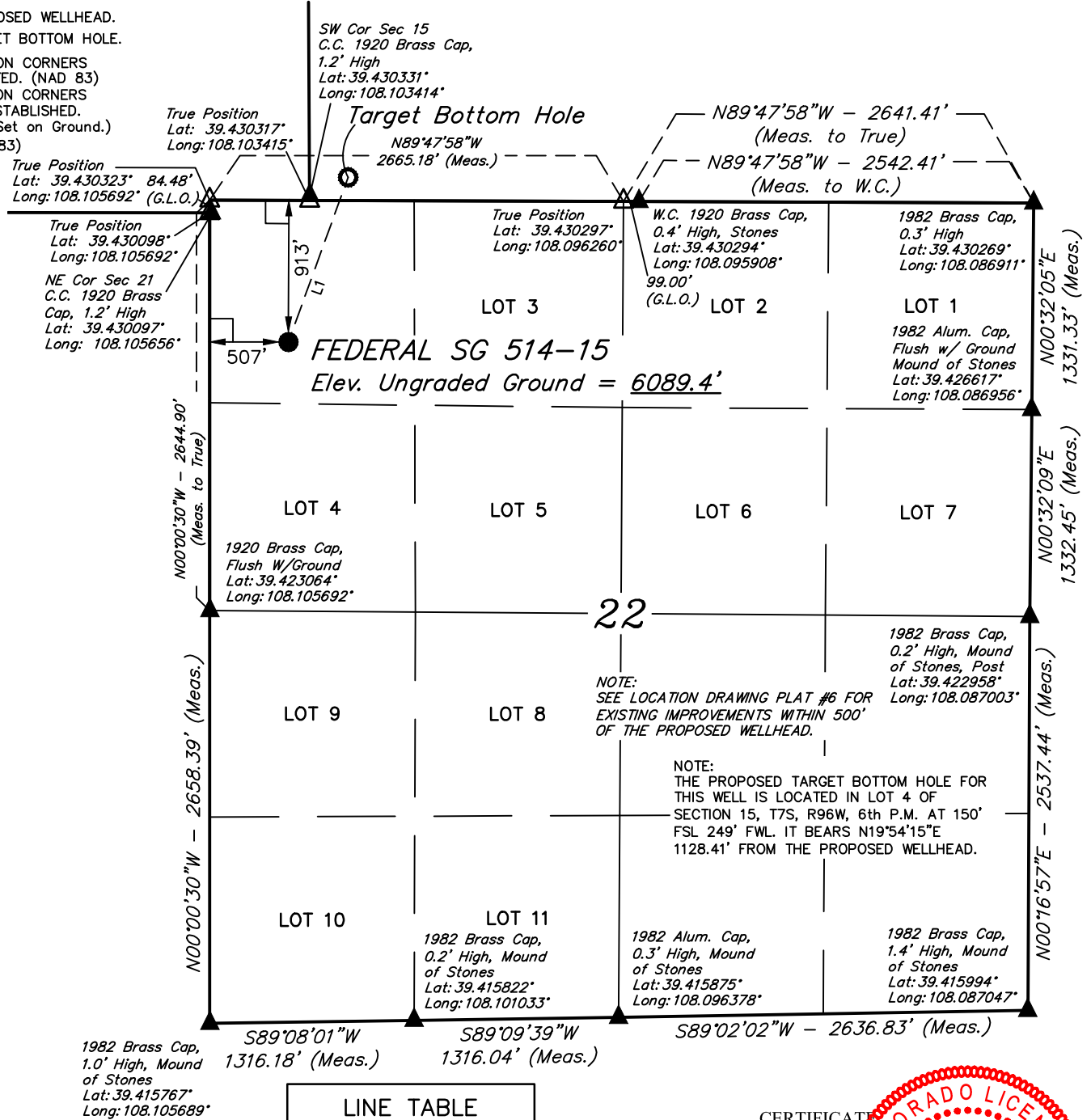


LEGEND:

- = 90° SYMBOL
- = PROPOSED WELLHEAD.
- = TARGET BOTTOM HOLE.
- ▲ = SECTION CORNERS LOCATED. (NAD 83)
- △ = SECTION CORNERS RE-ESTABLISHED. (Not Set on Ground.) (NAD 83)

T7S, R96W, 6th P.M.



NOTE:
SEE LOCATION DRAWING PLAT #6 FOR
EXISTING IMPROVEMENTS WITHIN 500'
OF THE PROPOSED WELLHEAD.

NOTE:
THE PROPOSED TARGET BOTTOM HOLE FOR
THIS WELL IS LOCATED IN LOT 4 OF
SECTION 15, T7S, R96W, 6th P.M. AT 150'
FSL 249' FWL. IT BEARS N19°54'15\"/>

LINE TABLE

LINE	DIRECTION	LENGTH
L1	N19°54'15"E	1128.41'

PDOP = 1.4

NAD 83 (SURFACE LOCATION)	
LATITUDE =	39°25'40.13\"/>



PLAT #1

REGISTERED LAND SURVEYOR
REGISTRATION NO. 04180
STATE OF COLORADO 04-10-18

REV: 2 04-09-18 T.L.L. (NAME CHANGE)

BASIS OF BEARINGS
BASIS OF BEARINGS IS A G.P.S. OBSERVATION

BASIS OF ELEVATION
SPOT ELEVATION AT THE NORTHWEST CORNER OF SECTION 30, T7S, R95W, 6th P.M.,
TAKEN FROM THE FORKED GULCH, QUADRANGLE, COLORADO, GARFIELD COUNTY, 7.5
MINUTE QUAD. (TOPOGRAPHIC MAP) PUBLISHED BY THE UNITED STATES DEPARTMENT
OF THE INTERIOR, GEOLOGICAL SURVEY. SAID ELEVATION IS MARKED AS BEING 5966
FEET.



UELS, LLC
Corporate Office * 85 South 200 East
Vernal, UT 84078 * (435) 789-1017

TEP Rocky Mountain LLC

FEDERAL SG 514-15 (SURFACE LOCATION)
NW 1/4 NW 1/4, SECTION 22, T7S, R96W, 6th P.M.
GARFIELD COUNTY, COLORADO

SURVEYED BY	BART HUNTING, C.R.	02-16-18	SCALE
DRAWN BY	M.D.	02-24-18	1" = 1000'

WELL LOCATION PLAT

LEGEND:

- (Not Set on Ground.)
(NAD 83)
- Brass Cap,
Lat: 39.444573°
Long: 108.103365°

1982 Brass Cap,
0.2' High, Mound
of Stones
Lat: 39.444639°
Long: 108.086892°

Brass Cap,
Lat: 39.444573°
Long: 108.103365°

W.C. Rebar
Lat: 39.438898°
Long: 108.103433°

True Position
Lat: 39.437324°
Long: 108.103460°

NOTE:
THE PROPOSED TARGET BOTTOM HOLE
BEARS N19°54'15"E 1128.41' FROM THE
PROPOSED WELLHEAD WHICH IS LOCATED IN
THE NW 1/4 NW 1/4 OF SECTION 22, T7S,
R96W, 6th P.M. AT 913' FNL 507' FWL.

FEDERAL SG 514-15
Target Bottom Hole

C.C. 1920 Brass Cap,
1.2' High
Lat: 39.430331°
Long: 108.103414°

True Position
Lat: 39.430317°
Long: 108.103415°

True Position _____
 Lat: 39.430323° 84.48'
 Long: 108.105692° (G.L.O.)

True Position
Lat: 39.430098°
Long: 108.105692°

NE Cor Sec 21 /
C.C. 1920 Brass
Cap, 1.2' High
Lat: 39.430097°
Long: 108.105656°

*Surface
Location*

LINE TABLE		
LINE	DIRECTION	LENGTH
L1	N19°54'15"E	1128.41'

LOT 6
W.C. 1920 Brass Cap,
0.4' High, Stones
Lat: 39.430294°
Long: 108.095908°

True Position
Lat: 39.430297°
Long: 108.096260°

$N89^{\circ}47'58''W - 2542.41'$
 (Meas. to W.C.)
 $N89^{\circ}47'58''W - 2641.41'$
 (Meas. to True)

1982 Brass Cap,
0.3' High
Lat: 39.430269°
Long: 108.086911°

NAD 83 (TARGET BOTTOM HOLE)
LATITUDE = 39°25'50.61" (39.430725)
LONGITUDE = 108°06'09.14" (108.102538)
STATE PLANE NAD 83 (CO. CEN.)
N: 1592300.21 E: 2264982.09

A horizontal scale bar with alternating black and white segments. It is labeled with '0', '500'', and '1000'' at the top.

THIS IS TO CERTIFY THAT THE ABOVE PLAN WAS PREPARED AND LOCATION AS SHOWN WAS STAKED ON THE GROUND FROM FIELD NOTES OF ACTUAL SURVEYS MADE BY ME OR UNDER MY SUPERVISION AND THAT THE SAME ARE TRUE AND CORRECT TO THE BEST OF MY KNOWLEDGE AND BELIEF.

PLAT #1

REGISTERED LAND SURVEYOR
REGISTRATION NO. 19130
STATE OF COLORADO
04-10-18

REV: 2 04-09-18 T.L.L (NAME CHANGE)

BASIS OF BEARINGS

BASIS OF BEARINGS

BASIS OF BEARINGS IS A G.P.S. OBSERVATION

BASIS OF ELEVATION

SPOT ELEVATION AT THE NORTHWEST CORNER OF SECTION 30, T7S, R95W, 6th P.M., TAKEN FROM THE FORKED GULCH, QUADRANGLE, COLORADO, GARFIELD COUNTY, 7.5 MINUTE QUAD. (TOPOGRAPHIC MAP) PUBLISHED BY THE UNITED STATES DEPARTMENT OF THE INTERIOR, GEOLOGICAL SURVEY. SAID ELEVATION IS MARKED AS BEING 5966 FEET.

UELS, LLC

**Corporate Office * 85 South 200 East
Vernal, UT 84078 * (435) 789-1017**

TEP Rocky Mountain LLC

**FEDERAL SG 514-15 (TARGET BOTTOM HOLE)
LOT 4, SECTION 15, T7S, R96W, 6th P.M.
GARFIELD COUNTY, COLORADO**

SURVEYED BY	BART HUNTING, C.R.	02-16-18	SCALE
DRAWN BY	M.D.	02-24-18	1" = 1000'

WELL LOCATION PLAT

