

Inspection Photos

06/15/2018

Operator: FOUNDATION ENERGY
MANAGEMENT LLC - 10112

Location ID: 323740

Inspection Doc. Number: 682503508
Weld County, CO

Aaron Trujillo
NE Reclamation Specialist
COGCC

Inspection Photos
Operator: FOUNDATION ENERGY MANAGEMENT LLC - 10112
Location ID: 323740



Photo 1: Photo taken from the west end of the location, facing east. Photo of fence in disrepair.



Photo 2: Photo taken from the northeast corner of the location, facing southwest. Photo shows area within the interim area where Canada Thistle was observed

Inspection Photos
Operator: FOUNDATION ENERGY MANAGEMENT LLC - 10112
Location ID: 323740



Photo 3: Photo taken from the northeast corner of the pump jack, facing northeast. Photo shows area within the interim area where Canada Thistle was observed



Photo 4: Photo taken from the east end of the locaiton, facing southeast. Photo of Canada thistle.



Photo 5: Photo taken on the east end of the location, facing west. Photo shows area within drainage/interim area where Canada Thistle was observed

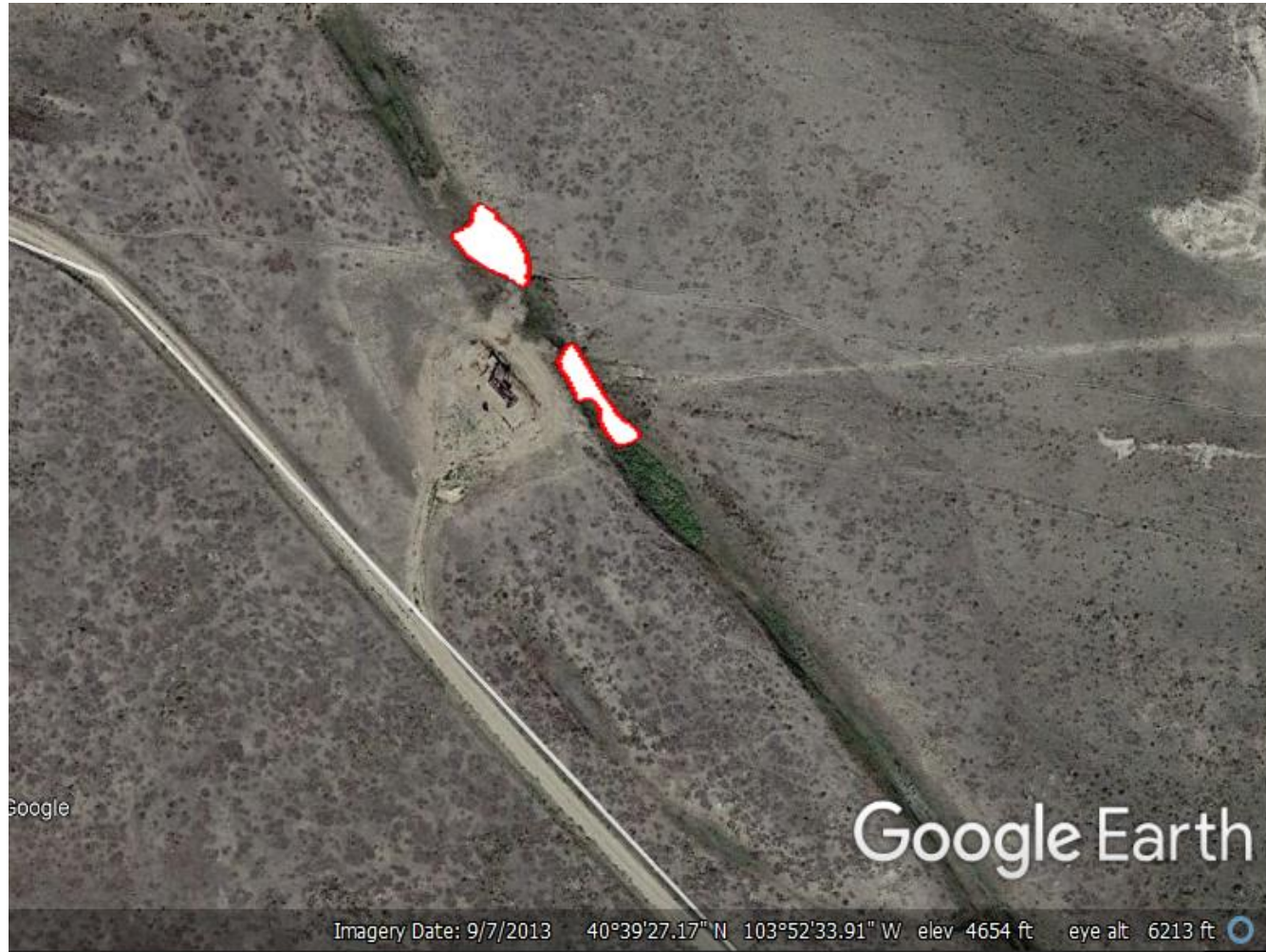


Photo 6: 2013 Aerial imagery. Photo shows areas (red polygon) where Noxious Weeds (Canada Thistle) were observed on the interim areas of the location.