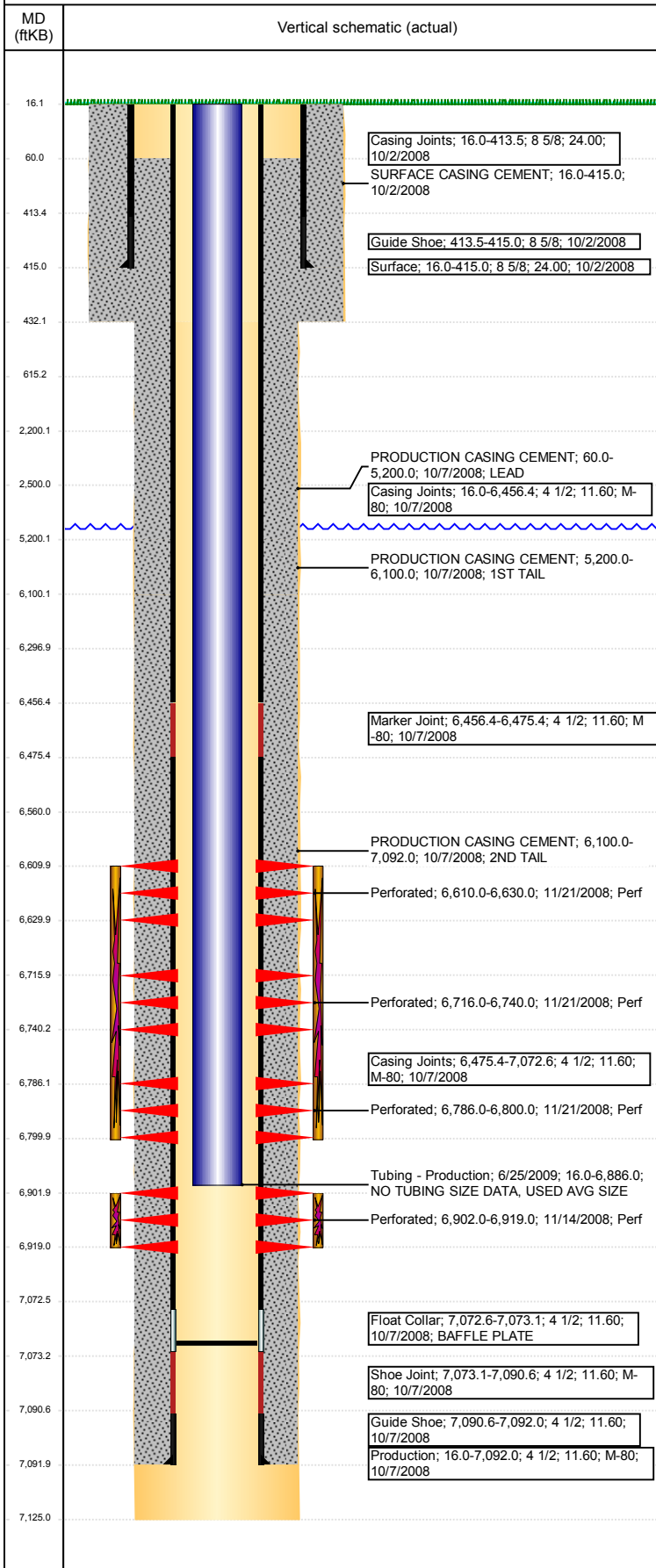


Wellbore Schematic Input Report

Well Name: GWAA 02-35

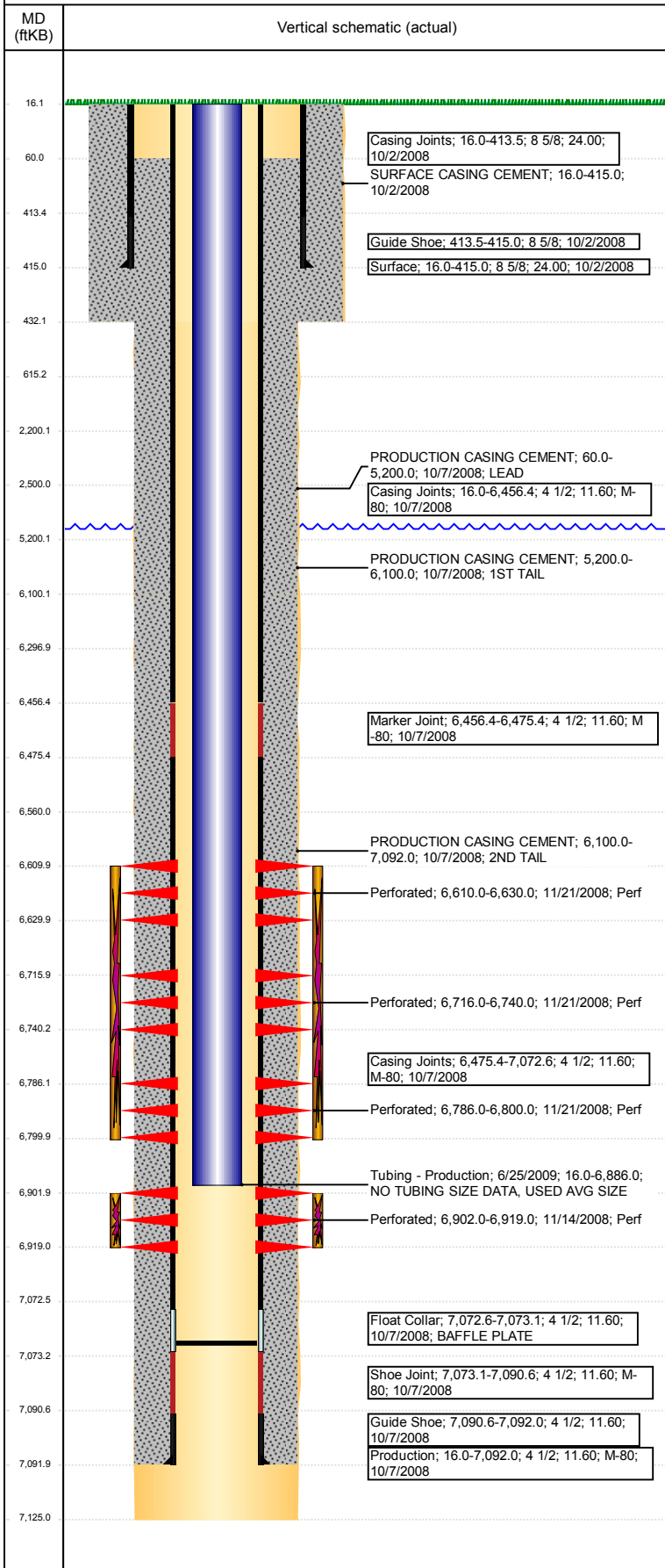
VERTICAL - Original Hole, 6/13/2018 12:54:10 PM



Well Header								
API 05-123-27065		Well Report Center 425778713		Well Configuration Type VERTICAL				
Original KB Elevation (ft) 4,643		KB - GL / MSL (ftKB) 16.00		Spud Date 10/2/2008		P & A Date		
Production Route Watt - A3-01			Well Production Status PR				SoRT Ignore No	
Directions To Well				Actual Latitude (°) 40.42365000		Actual Longitude (°) -104.63602000		
Comment LITTLE INFO IN FILE, USED DAILY RPTS & STATE RPTS. CEMENT BASKETS @ 5008', 4839', & 4413'. NO TUBING SIZE GIVEN, USED AVG SIZE OF 2 3/8" 4.7#. TBG SIZE CONFIRMED W/GYRO CREW								
Congressional Location								
Quarter 3 SW	Quarter 4 SW	Section 2	Township 5	Twnshp N/S Dir N	Range 65	Range E/W Dir W		
Rig Operator								
Rig Operator								
Plug Back Total Depths								
Date	Depth (ftKB)	Method			Com			
6/24/2009	7,073.0	TAG			CLEAN OUT & DRILL OUT, ROLL HOLE CLEAN			
Wellbore Sections								
Section Des		Size (in)		Act Top, MD (ftKB)		Act Btm, MD (ftKB)		
SURFACE		12 1/4		16		432		
PRODUCTION		7 7/8		432		7,125		
Zone Statuses								
Zone Name		Status Date			Status			
NIOBRARA		1/9/2009			PR			
CODELL		1/9/2009			PR			
Casing Strings								
Surface, 415.0ftKB								
Casing Description Surface		Run Date 10/2/2008	OD (in) 8 5/8	Wt/Len (l...) 24.00	Grade	Top, MD (ft...) 16.0	MD (ftKB) 415.0	
Production, 7,092.0ftKB								
Casing Description Production		Run Date 10/7/2008	OD (in) 4 1/2	Wt/Len (l...) 11.60	Grade M-80	Top, MD (ft...) 16.0	MD (ftKB) 7,092.0	
Cement								
Des			Start Date		Top (ftKB)		Btm (ftKB)	
SURFACE CASING CEMENT			10/2/2008		16.0		415.0	
PRODUCTION CASING CEMENT			10/7/2008		60.0		5,200.0	
PRODUCTION CASING CEMENT			10/7/2008		5,200.0		6,100.0	
Proposed Cement								
Des					Top (ftKB)		Btm (ftKB)	
Balance Plug					2,200.0		2,500.0	
Shoe Plug					16.0		615.0	
Tubing Strings								
Tubing Description Tubing - Production		Run Date 6/25/2009	String... 2 3/8	ID (in) 2.00	Wt (lb/ft) 4.70	Grade	Len (ft) 6,870.00	Set De...
Tubing Components								
Item Des		OD (in)	Wt (lb/ft)	Grade	Jts	Len (ft)	Btm (ftKB)	Btm (TVD) (ftKB)
Tubing		2 3/8	4.70		222	6,868.40	6,884.4	
Seal Nipple		2 3/8			1	1.10	6,885.5	
Notched collar		2 3/8			1	0.50	6,886.0	
Other In Hole								
Run Date		Des			OD (in)	Top (ftKB)	Btm (ftKB)	
Proposed Other In Hole								
Des				OD (in)		Top (ftKB)		Btm (ftKB)
Cast Iron Bridge Plug w/ 20 SX Cement				4		6,297.0		6,560.0
Logs								
Date		Type				Top, MD (ftKB)		Btm, MD (ftKB)
10/7/2008		COMPENSATED DENSITY				3,540.0		7,105.0
10/7/2008		INDUCTION				400.0		7,125.0
11/11/2008		CEMENT BOND				0.0		7,049.0
4/9/2018		GYRO				16.0		6,850.0

Well Name: GWAA 02-35

VERTICAL - Original Hole, 6/13/2018 12:54:10 PM



Perforation Data				
Linked Zone	Sum of Entered Shot Total	Top (ftKB)	Btm (ftKB)	Date
NIOBRARA, Original Hole	40	6,610.00	6,630.00	11/21/2008
NIOBRARA, Original Hole	96	6,716.00	6,740.00	11/21/2008
NIOBRARA, Original Hole	56	6,786.00	6,800.00	11/21/2008
CODELL, Original Hole	68	6,902.00	6,919.00	11/14/2008
Total (Sum)	260			

Job Supply Amounts					
Supply Item Des	Type	Uni...	Job Category	Total...	Total...