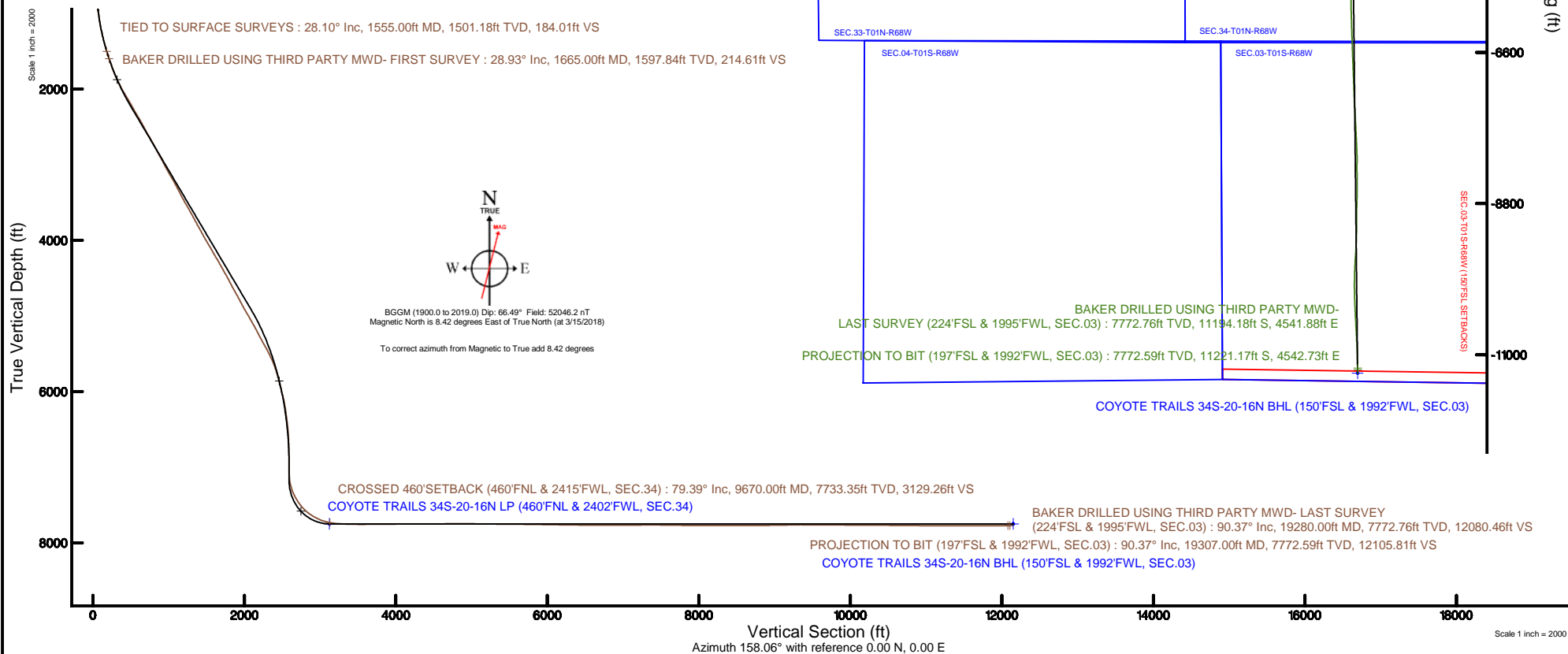


Location:	COLORADO	Slot:	SLOT#01 COYOTE TRAILS 34S-20-16N (1144'FSL & 2031'FEL, SEC.28)
Field:	WELD COUNTY (NAD83/TRUE NORTH)	Well:	COYOTE TRAILS 34S-20-16N
Facility:	SEC.28-T01N-R68W	Wellbore:	COYOTE TRAILS 34S-20-16N PWB
Plot reference wellpath is COYOTE TRAILS 34S-20-16N PWP (REV-A.0)		Grid System: NAD83 / Lambert Colorado SP, Northern Zone (501), US feet	
True vertical depths are referenced to PATTERSON 901 (29KB) (RKB)		* = Wellpath was transformed from a different geodetic datum	
Measured depths are referenced to PATTERSON 901 (29KB) (RKB)		North Reference: True north	
PATTERSON 901 (29KB) (RKB) to Mean Sea Level: 5303 feet		Scale: True distance	
Mean Sea Level to Mud line (At Slot: SLOT#01 COYOTE TRAILS 34S-20-16N (1144'FSL & 2031'FEL SEC.28)): 0 feet		Depths are in feet	
Coordinates are in feet referenced to Slot		Created by: ingnjamr on 2018-04-25	
		Database: Denver	





Actual Wellpath Report

COYOTE TRAILS 34S-20-16N AWP

Page 1 of 11



REFERENCE WELLPATH IDENTIFICATION			
Operator	EXTRACTION OIL & GAS	Slot	SLOT#01 COYOTE TRAILS 34S-20-16N (1144'FSL & 2031'FEL, SEC.28)
Area	COLORADO	Well	COYOTE TRAILS 34S-20-16N
Field	WELD COUNTY (NAD83/TRUE NORTH)	Wellbore	COYOTE TRAILS 34S-20-16N AWB
Facility	SEC.28-T01N-R68W		

REPORT SETUP INFORMATION			
Projection System	NAD83 / Lambert Colorado SP, Northern Zone (501), US feet	Software System	WellArchitect® 5.0
North Reference	True	User	Ingmjmr
Scale	0.999965	Report Generated	4/25/2018 at 1:41:08 PM
Convergence at slot	0.32° East	Database/Source file	Denver/COYOTE_TRAILS_34S-20-16N_AWP.xml

WELLPATH LOCATION						
	Local coordinates		Grid coordinates		Geographic coordinates	
	North[ft]	East[ft]	Easting[US ft]	Northing[US ft]	Latitude	Longitude
Slot Location	0.00	0.00	3138269.92	1249778.85	40°01'04.703"N	105°00'22.741"W
Facility Reference Pt			3138269.92	1249778.85	40°01'04.703"N	105°00'22.741"W
Field Reference Pt			3185481.27	1419166.81	40°28'55.560"N	104°49'59.556"W

WELLPATH DATUM			
Calculation method	Minimum curvature	PATTERSON 901 (29'KB) (RKB) to Facility Vertical Datum	5303.00ft
Horizontal Reference Pt	Slot	PATTERSON 901 (29'KB) (RKB) to Mean Sea Level	5303.00ft
Vertical Reference Pt	PATTERSON 901 (29'KB) (RKB)	PATTERSON 901 (29'KB) (RKB) to Mud Line at Slot (SLOT#01 COYOTE TRAILS 34S-20-16N (1144'FSL & 2031'FEL, SEC.28))	5303.00ft
MD Reference Pt	PATTERSON 901 (29'KB) (RKB)	Section Origin	N 0.00, E 0.00 ft
Field Vertical Reference	Mean Sea Level	Section Azimuth	157.96°



Actual Wellpath Report

COYOTE TRAILS 34S-20-16N AWP

Page 2 of 11



REFERENCE WELLPATH IDENTIFICATION

Operator	EXTRACTION OIL & GAS	Slot	SLOT#01 COYOTE TRAILS 34S-20-16N (1144'FSL & 2031'FEL, SEC.28)
Area	COLORADO	Well	COYOTE TRAILS 34S-20-16N
Field	WELD COUNTY (NAD83/TRUE NORTH)	Wellbore	COYOTE TRAILS 34S-20-16N AWP
Facility	SEC.28-T01N-R68W		

WELLPATH DATA (189 stations)

MD [ft]	Inclination [°]	Azimuth [°]	TVD [ft]	Vert Sect [ft]	North [ft]	East [ft]	Latitude	Longitude	DLS [°/100ft]	Comments
1555.00	28.100	103.210	1501.18	184.51	-61.95	338.67	40°01'04.091"N	105°00'18.388"W	2.86	TIED TO SURFACE SURVEYS
1665.00	28.930	104.200	1597.84	215.19	-74.39	389.68	40°01'03.968"N	105°00'17.732"W	0.87	BAKER DRILLED USING THIRD PARTY MWD- FIRST SURVEY
1761.00	29.100	107.140	1681.79	243.66	-86.97	434.50	40°01'03.843"N	105°00'17.156"W	1.50	
1856.00	32.160	107.020	1763.53	274.20	-101.18	480.76	40°01'03.703"N	105°00'16.562"W	3.22	
1951.00	35.280	107.220	1842.54	307.50	-116.71	531.16	40°01'03.550"N	105°00'15.914"W	3.29	
2047.00	38.430	106.890	1919.34	343.80	-133.59	586.20	40°01'03.383"N	105°00'15.207"W	3.29	
2142.00	41.470	105.870	1992.16	381.69	-150.77	644.72	40°01'03.213"N	105°00'14.454"W	3.27	
2238.00	45.170	104.530	2062.00	421.51	-168.01	708.27	40°01'03.043"N	105°00'13.638"W	3.97	
2333.00	46.210	103.610	2128.36	461.57	-184.53	774.21	40°01'02.879"N	105°00'12.790"W	1.30	
2429.00	45.200	102.790	2195.40	501.22	-200.23	841.11	40°01'02.724"N	105°00'11.930"W	1.22	
2524.00	43.770	102.060	2263.17	538.89	-214.55	906.11	40°01'02.583"N	105°00'11.095"W	1.60	
2620.00	46.460	103.450	2330.91	577.72	-229.59	972.44	40°01'02.434"N	105°00'10.242"W	2.98	
2716.00	45.360	103.450	2397.71	617.75	-245.63	1039.50	40°01'02.275"N	105°00'09.380"W	1.15	
2811.00	43.810	102.930	2465.37	656.22	-260.85	1104.42	40°01'02.125"N	105°00'08.546"W	1.68	
2907.00	42.280	102.420	2535.52	693.54	-275.23	1168.35	40°01'01.983"N	105°00'07.724"W	1.63	
3002.00	45.590	103.290	2603.93	731.25	-289.90	1232.60	40°01'01.838"N	105°00'06.899"W	3.54	
3097.00	44.940	103.240	2670.79	770.25	-305.39	1298.28	40°01'01.685"N	105°00'06.054"W	0.69	
3193.00	43.160	102.770	2739.79	808.58	-320.41	1363.31	40°01'01.536"N	105°00'05.219"W	1.89	
3289.00	41.430	102.470	2810.79	845.32	-334.53	1426.35	40°01'01.397"N	105°00'04.408"W	1.81	
3384.00	43.940	103.560	2880.62	882.33	-349.05	1489.09	40°01'01.253"N	105°00'03.602"W	2.75	
3479.00	43.000	103.860	2949.57	920.51	-364.54	1552.59	40°01'01.100"N	105°00'02.786"W	1.01	
3575.00	41.090	103.430	3020.86	958.01	-379.71	1615.06	40°01'00.950"N	105°00'01.983"W	2.01	
3670.00	45.060	103.510	3090.23	995.69	-394.82	1678.15	40°01'00.801"N	105°00'01.172"W	4.18	
3766.00	45.500	103.800	3157.78	1035.49	-410.92	1744.43	40°01'00.642"N	105°00'00.320"W	0.51	
3861.00	43.520	103.550	3225.53	1074.37	-426.67	1809.14	40°01'00.486"N	104°59'59.489"W	2.09	
3956.00	41.480	103.300	3295.57	1111.61	-441.57	1871.56	40°01'00.339"N	104°59'58.686"W	2.15	
4052.00	43.810	102.040	3366.18	1148.62	-455.82	1935.01	40°01'00.198"N	104°59'57.871"W	2.58	
4147.00	42.800	101.760	3435.31	1185.00	-469.26	1998.77	40°01'00.065"N	104°59'57.051"W	1.08	
4243.00	45.510	102.960	3504.18	1222.80	-483.59	2064.08	40°00'59.923"N	104°59'56.212"W	2.95	
4338.00	44.590	103.830	3571.30	1261.77	-499.16	2129.48	40°00'59.769"N	104°59'55.371"W	1.17	



Actual Wellpath Report

COYOTE TRAILS 34S-20-16N AWP

Page 3 of 11



REFERENCE WELLPATH IDENTIFICATION

Operator	EXTRACTION OIL & GAS	Slot	SLOT#01 COYOTE TRAILS 34S-20-16N (1144'FSL & 2031'FEL, SEC.28)
Area	COLORADO	Well	COYOTE TRAILS 34S-20-16N
Field	WELD COUNTY (NAD83/TRUE NORTH)	Wellbore	COYOTE TRAILS 34S-20-16N AWP
Facility	SEC.28-T01N-R68W		

WELLPATH DATA (189 stations)

MD [ft]	Inclination [°]	Azimuth [°]	TVD [ft]	Vert Sect [ft]	North [ft]	East [ft]	Latitude	Longitude	DLS [°/100ft]	Comments
4433.00	43.170	103.520	3639.77	1300.21	-514.73	2193.46	40°00'59.615"N	104°59'54.549"W	1.51	
4529.00	44.310	101.230	3709.13	1337.71	-528.94	2258.29	40°00'59.475"N	104°59'53.716"W	2.03	
4624.00	44.380	101.710	3777.07	1374.37	-542.14	2323.36	40°00'59.344"N	104°59'52.879"W	0.36	
4719.00	45.080	102.560	3844.56	1411.92	-556.20	2388.72	40°00'59.205"N	104°59'52.039"W	0.97	
4815.00	42.760	102.570	3913.71	1449.74	-570.68	2453.71	40°00'59.062"N	104°59'51.204"W	2.42	
4910.00	45.180	102.920	3982.07	1487.37	-585.24	2518.04	40°00'58.918"N	104°59'50.377"W	2.56	
5005.00	46.550	104.160	4048.23	1527.04	-601.21	2584.32	40°00'58.760"N	104°59'49.526"W	1.72	
5101.00	43.540	103.520	4116.05	1566.86	-617.47	2650.27	40°00'58.600"N	104°59'48.678"W	3.17	
5196.00	45.130	102.850	4184.00	1605.15	-632.60	2714.91	40°00'58.450"N	104°59'47.847"W	1.74	
5292.00	46.660	103.380	4250.81	1644.84	-648.25	2782.05	40°00'58.295"N	104°59'46.984"W	1.64	
5387.00	43.600	102.570	4317.82	1683.48	-663.38	2847.64	40°00'58.146"N	104°59'46.141"W	3.28	
5483.00	45.040	102.260	4386.50	1721.42	-677.79	2913.14	40°00'58.003"N	104°59'45.299"W	1.52	
5578.00	46.390	101.650	4452.84	1759.44	-691.88	2979.68	40°00'57.864"N	104°59'44.444"W	1.49	
5673.00	43.590	101.120	4520.02	1796.44	-705.14	3045.51	40°00'57.733"N	104°59'43.598"W	2.97	
5769.00	43.320	100.980	4589.70	1832.49	-717.80	3110.31	40°00'57.608"N	104°59'42.765"W	0.30	
5864.00	44.050	103.500	4658.41	1869.45	-731.71	3174.42	40°00'57.470"N	104°59'41.941"W	1.99	
5960.00	44.550	103.010	4727.11	1908.19	-747.08	3239.69	40°00'57.318"N	104°59'41.103"W	0.63	
6055.00	43.690	100.780	4795.32	1945.11	-760.72	3304.39	40°00'57.183"N	104°59'40.271"W	1.87	
6151.00	44.210	100.990	4864.43	1981.32	-773.31	3369.82	40°00'57.059"N	104°59'39.430"W	0.56	
6246.00	45.250	103.230	4931.92	2018.86	-787.34	3435.18	40°00'56.920"N	104°59'38.590"W	1.99	
6342.00	46.110	103.570	4999.00	2058.69	-803.26	3501.99	40°00'56.763"N	104°59'37.731"W	0.93	
6437.00	43.920	102.430	5066.15	2097.27	-818.39	3567.45	40°00'56.613"N	104°59'36.890"W	2.46	
6533.00	45.370	102.680	5134.45	2135.57	-833.05	3633.29	40°00'56.468"N	104°59'36.044"W	1.52	
6629.00	42.050	102.260	5203.83	2173.16	-847.38	3698.06	40°00'56.326"N	104°59'35.211"W	3.47	
6723.00	42.830	103.050	5273.20	2209.27	-861.28	3759.94	40°00'56.189"N	104°59'34.416"W	1.01	
6819.00	43.390	104.050	5343.29	2247.45	-876.66	3823.72	40°00'56.037"N	104°59'33.596"W	0.92	
6939.00	42.400	106.000	5431.20	2296.66	-897.81	3902.60	40°00'55.828"N	104°59'32.583"W	1.38	
7034.00	39.160	104.790	5503.13	2334.39	-914.31	3962.41	40°00'55.664"N	104°59'31.814"W	3.51	
7130.00	36.710	103.950	5578.84	2369.43	-928.96	4019.57	40°00'55.520"N	104°59'31.079"W	2.61	
7225.00	33.420	103.250	5656.59	2401.24	-941.81	4072.61	40°00'55.392"N	104°59'30.398"W	3.49	



Actual Wellpath Report

COYOTE TRAILS 34S-20-16N AWP

Page 4 of 11



REFERENCE WELLPATH IDENTIFICATION

Operator	EXTRACTION OIL & GAS	Slot	SLOT#01 COYOTE TRAILS 34S-20-16N (1144'FSL & 2031'FEL, SEC.28)
Area	COLORADO	Well	COYOTE TRAILS 34S-20-16N
Field	WELD COUNTY (NAD83/TRUE NORTH)	Wellbore	COYOTE TRAILS 34S-20-16N AWP
Facility	SEC.28-T01N-R68W		

WELLPATH DATA (189 stations) † = interpolated/extrapolated station

MD [ft]	Inclination [°]	Azimuth [°]	TVD [ft]	Vert Sect [ft]	North [ft]	East [ft]	Latitude	Longitude	DLS [°/100ft]	Comments
7321.00	29.360	101.640	5738.52	2429.57	-952.62	4121.41	40°00'55.286"N	104°59'29.770"W	4.32	
7416.00	25.250	100.040	5822.92	2453.26	-960.85	4164.20	40°00'55.204"N	104°59'29.221"W	4.39	
7512.00	23.810	102.850	5910.26	2475.22	-968.73	4203.25	40°00'55.126"N	104°59'28.719"W	1.93	
7607.00	24.630	104.740	5996.90	2498.04	-978.04	4241.09	40°00'55.034"N	104°59'28.232"W	1.19	
7703.00	21.200	104.150	6085.31	2520.27	-987.37	4277.28	40°00'54.942"N	104°59'27.767"W	3.58	
7798.00	17.720	102.360	6174.87	2538.59	-994.67	4308.07	40°00'54.870"N	104°59'27.372"W	3.72	
7894.00	14.420	100.860	6267.10	2553.34	-1000.05	4334.09	40°00'54.816"N	104°59'27.037"W	3.46	
7989.00	15.040	98.210	6358.98	2565.98	-1004.04	4357.91	40°00'54.777"N	104°59'26.731"W	0.96	
8085.00	12.050	94.900	6452.30	2576.79	-1006.67	4380.22	40°00'54.751"N	104°59'26.444"W	3.22	
8180.00	9.760	93.230	6545.58	2584.72	-1007.97	4398.14	40°00'54.738"N	104°59'26.214"W	2.43	
8276.00	7.890	87.790	6640.44	2590.43	-1008.18	4412.85	40°00'54.736"N	104°59'26.025"W	2.13	
8372.00	6.730	79.620	6735.66	2593.81	-1006.91	4424.97	40°00'54.749"N	104°59'25.869"W	1.62	
8467.00	3.930	82.010	6830.24	2595.72	-1005.46	4433.67	40°00'54.763"N	104°59'25.757"W	2.96	
8562.00	2.110	49.620	6925.11	2595.96	-1003.87	4438.23	40°00'54.779"N	104°59'25.699"W	2.55	
8658.00	2.270	94.750	7021.05	2596.26	-1002.88	4441.47	40°00'54.788"N	104°59'25.657"W	1.76	
8753.00	2.850	160.220	7115.97	2599.47	-1005.26	4444.15	40°00'54.765"N	104°59'25.623"W	2.96	
8849.00	12.870	182.920	7210.96	2611.58	-1018.22	4444.41	40°00'54.637"N	104°59'25.619"W	10.73	
8944.00	21.730	188.320	7301.58	2636.40	-1046.24	4441.32	40°00'54.360"N	104°59'25.659"W	9.47	
9040.00	30.730	185.600	7387.61	2673.54	-1088.33	4436.34	40°00'53.944"N	104°59'25.723"W	9.46	
9135.00	37.310	184.240	7466.31	2720.91	-1141.25	4431.84	40°00'53.421"N	104°59'25.781"W	6.97	
9230.00	45.540	184.340	7537.48	2777.19	-1203.88	4427.14	40°00'52.802"N	104°59'25.842"W	8.66	
9326.00	54.220	181.500	7599.29	2843.72	-1277.12	4423.52	40°00'52.078"N	104°59'25.888"W	9.32	
9421.00	61.460	181.780	7649.82	2917.32	-1357.45	4421.21	40°00'51.284"N	104°59'25.918"W	7.63	
9517.00	67.290	178.530	7691.33	2997.44	-1443.96	4421.04	40°00'50.429"N	104°59'25.921"W	6.80	
9613.00	76.260	177.980	7721.33	3082.88	-1535.01	4423.82	40°00'49.530"N	104°59'25.885"W	9.36	
9670.00†	79.392	177.611	7733.35	3135.29	-1590.68	4425.97	40°00'48.980"N	104°59'25.858"W	5.53	CROSSED 460'SETBACK (460'FNL & 2415'FWL, SEC.34)
9708.00	81.480	177.370	7739.66	3170.60	-1628.11	4427.61	40°00'48.610"N	104°59'25.837"W	5.53	
9804.00	87.620	176.100	7748.77	3261.04	-1723.47	4433.05	40°00'47.667"N	104°59'25.767"W	6.53	
9900.00	87.760	178.660	7752.64	3351.49	-1819.29	4437.44	40°00'46.720"N	104°59'25.711"W	2.67	
9995.00	89.380	178.850	7755.01	3440.27	-1914.23	4439.50	40°00'45.782"N	104°59'25.684"W	1.72	



Actual Wellpath Report

COYOTE TRAILS 34S-20-16N AWP

Page 5 of 11



REFERENCE WELLPATH IDENTIFICATION			
Operator	EXTRACTION OIL & GAS	Slot	SLOT#01 COYOTE TRAILS 34S-20-16N (1144'FSL & 2031'FEL, SEC.28)
Area	COLORADO	Well	COYOTE TRAILS 34S-20-16N
Field	WELD COUNTY (NAD83/TRUE NORTH)	Wellbore	COYOTE TRAILS 34S-20-16N AWP
Facility	SEC.28-T01N-R68W		

WELLPATH DATA (189 stations)										
MD [ft]	Inclination [°]	Azimuth [°]	TVD [ft]	Vert Sect [ft]	North [ft]	East [ft]	Latitude	Longitude	DLS [°/100ft]	Comments
10090.00	89.390	179.400	7756.03	3528.86	-2009.21	4440.95	40°00'44.843"N	104°59'25.666"W	0.58	
10186.00	91.180	179.720	7755.56	3618.11	-2105.21	4441.69	40°00'43.895"N	104°59'25.657"W	1.89	
10216.00	90.730	180.020	7755.06	3645.94	-2135.20	4441.76	40°00'43.598"N	104°59'25.656"W	1.80	
10312.00	90.340	180.630	7754.16	3734.72	-2231.20	4441.21	40°00'42.650"N	104°59'25.663"W	0.75	
10409.00	90.430	180.470	7753.51	3824.27	-2328.19	4440.28	40°00'41.691"N	104°59'25.675"W	0.19	
10504.00	90.190	181.320	7752.99	3911.76	-2423.18	4438.80	40°00'40.753"N	104°59'25.695"W	0.93	
10600.00	90.430	180.860	7752.47	4000.04	-2519.16	4436.97	40°00'39.804"N	104°59'25.718"W	0.54	
10695.00	90.290	182.340	7751.88	4087.07	-2614.11	4434.32	40°00'38.866"N	104°59'25.753"W	1.56	
10791.00	90.550	179.470	7751.17	4175.46	-2710.09	4432.80	40°00'37.917"N	104°59'25.772"W	3.00	
10886.00	90.170	178.330	7750.58	4264.18	-2805.07	4434.63	40°00'36.979"N	104°59'25.749"W	1.26	
10981.00	90.060	177.380	7750.39	4353.51	-2900.00	4438.18	40°00'36.040"N	104°59'25.704"W	1.01	
11077.00	90.370	177.980	7750.03	4443.88	-2995.92	4442.07	40°00'35.092"N	104°59'25.654"W	0.70	
11172.00	90.130	177.810	7749.61	4533.19	-3090.86	4445.56	40°00'34.154"N	104°59'25.609"W	0.31	
11268.00	90.300	177.210	7749.25	4623.65	-3186.76	4449.73	40°00'33.207"N	104°59'25.556"W	0.65	
11363.00	90.460	177.470	7748.62	4713.27	-3281.66	4454.14	40°00'32.269"N	104°59'25.499"W	0.32	
11459.00	90.250	178.690	7748.03	4803.41	-3377.60	4457.35	40°00'31.321"N	104°59'25.458"W	1.29	
11554.00	89.970	179.760	7747.84	4891.94	-3472.59	4458.64	40°00'30.382"N	104°59'25.442"W	1.16	
11650.00	89.340	181.210	7748.42	4980.61	-3568.58	4457.83	40°00'29.433"N	104°59'25.453"W	1.65	
11745.00	89.450	180.190	7749.42	5068.22	-3663.57	4456.67	40°00'28.495"N	104°59'25.468"W	1.08	
11841.00	89.410	179.700	7750.38	5157.23	-3759.56	4456.76	40°00'27.546"N	104°59'25.467"W	0.51	
11936.00	89.410	180.170	7751.36	5245.32	-3854.56	4456.87	40°00'26.607"N	104°59'25.466"W	0.49	
12031.00	89.200	181.650	7752.51	5332.80	-3949.54	4455.36	40°00'25.669"N	104°59'25.485"W	1.57	
12127.00	89.130	180.530	7753.91	5421.07	-4045.51	4453.53	40°00'24.720"N	104°59'25.509"W	1.17	
12222.00	89.600	180.870	7754.96	5508.68	-4140.50	4452.37	40°00'23.781"N	104°59'25.524"W	0.61	
12318.00	89.970	181.330	7755.32	5596.95	-4236.48	4450.53	40°00'22.833"N	104°59'25.548"W	0.61	
12413.00	89.600	179.120	7755.68	5684.87	-4331.47	4450.15	40°00'21.894"N	104°59'25.553"W	2.36	
12508.00	89.140	179.770	7756.72	5773.26	-4426.46	4451.07	40°00'20.955"N	104°59'25.541"W	0.84	
12603.00	89.230	178.680	7758.07	5861.78	-4521.44	4452.36	40°00'20.017"N	104°59'25.525"W	1.15	
12699.00	89.050	181.730	7759.52	5950.61	-4617.42	4452.02	40°00'19.068"N	104°59'25.530"W	3.18	
12794.00	89.170	180.810	7760.99	6037.85	-4712.38	4449.91	40°00'18.130"N	104°59'25.557"W	0.98	



Actual Wellpath Report

COYOTE TRAILS 34S-20-16N AWP

Page 6 of 11



REFERENCE WELLPATH IDENTIFICATION

Operator	EXTRACTION OIL & GAS	Slot	SLOT#01 COYOTE TRAILS 34S-20-16N (1144'FSL & 2031'FEL, SEC.28)
Area	COLORADO	Well	COYOTE TRAILS 34S-20-16N
Field	WELD COUNTY (NAD83/TRUE NORTH)	Wellbore	COYOTE TRAILS 34S-20-16N AWP
Facility	SEC.28-T01N-R68W		

WELLPATH DATA (189 stations)

MD [ft]	Inclination [°]	Azimuth [°]	TVD [ft]	Vert Sect [ft]	North [ft]	East [ft]	Latitude	Longitude	DLS [°/100ft]	Comments
12890.00	89.470	178.630	7762.13	6127.00	-4808.37	4450.38	40°00'17.181"N	104°59'25.551"W	2.29	
12985.00	89.060	182.230	7763.35	6214.76	-4903.34	4449.67	40°00'16.243"N	104°59'25.561"W	3.81	
13080.00	89.580	180.920	7764.48	6301.80	-4998.29	4447.06	40°00'15.304"N	104°59'25.594"W	1.48	
13176.00	89.180	180.880	7765.52	6390.20	-5094.28	4445.55	40°00'14.356"N	104°59'25.614"W	0.42	
13271.00	89.460	181.890	7766.64	6477.36	-5189.24	4443.25	40°00'13.417"N	104°59'25.644"W	1.10	
13366.00	89.630	182.120	7767.40	6564.12	-5284.18	4439.93	40°00'12.479"N	104°59'25.687"W	0.30	
13462.00	89.660	180.700	7767.99	6652.19	-5380.15	4437.57	40°00'11.531"N	104°59'25.717"W	1.48	
13557.00	89.750	179.460	7768.48	6740.19	-5475.14	4437.43	40°00'10.592"N	104°59'25.719"W	1.31	
13653.00	89.980	179.080	7768.71	6829.63	-5571.14	4438.66	40°00'09.643"N	104°59'25.704"W	0.46	
13748.00	90.130	179.170	7768.62	6918.22	-5666.12	4440.11	40°00'08.705"N	104°59'25.685"W	0.18	
13844.00	90.100	178.990	7768.42	7007.77	-5762.11	4441.65	40°00'07.756"N	104°59'25.666"W	0.19	
13939.00	90.470	178.990	7767.95	7096.44	-5857.10	4443.32	40°00'06.818"N	104°59'25.644"W	0.39	
14034.00	90.920	178.480	7766.80	7185.26	-5952.06	4445.42	40°00'05.879"N	104°59'25.618"W	0.72	
14130.00	90.740	178.400	7765.41	7275.18	-6048.02	4448.03	40°00'04.931"N	104°59'25.584"W	0.21	
14225.00	90.490	178.290	7764.39	7364.22	-6142.97	4450.78	40°00'03.992"N	104°59'25.549"W	0.29	
14321.00	88.860	178.770	7764.93	7454.10	-6238.94	4453.24	40°00'03.044"N	104°59'25.518"W	1.77	
14417.00	89.210	178.000	7766.55	7544.05	-6334.88	4455.95	40°00'02.096"N	104°59'25.483"W	0.88	
14512.00	89.320	177.980	7767.77	7633.30	-6429.82	4459.28	40°00'01.158"N	104°59'25.441"W	0.12	
14607.00	89.520	177.760	7768.73	7722.61	-6524.75	4462.81	40°00'00.220"N	104°59'25.396"W	0.31	
14702.00	89.290	177.920	7769.72	7811.95	-6619.67	4466.39	39°59'59.281"N	104°59'25.350"W	0.29	
14798.00	89.730	177.130	7770.54	7902.40	-6715.58	4470.53	39°59'58.334"N	104°59'25.297"W	0.94	
14893.00	89.610	178.180	7771.09	7991.84	-6810.50	4474.42	39°59'57.396"N	104°59'25.247"W	1.11	
14989.00	90.110	177.950	7771.32	8081.99	-6906.44	4477.66	39°59'56.447"N	104°59'25.206"W	0.57	
15084.00	89.870	177.620	7771.34	8171.36	-7001.37	4481.33	39°59'55.509"N	104°59'25.159"W	0.43	
15180.00	89.410	178.340	7771.94	8261.56	-7097.31	4484.72	39°59'54.561"N	104°59'25.115"W	0.89	
15275.00	90.160	178.060	7772.30	8350.69	-7192.26	4487.70	39°59'53.623"N	104°59'25.077"W	0.84	
15370.00	90.070	177.480	7772.11	8440.07	-7287.19	4491.40	39°59'52.685"N	104°59'25.030"W	0.62	
15466.00	90.170	176.410	7771.90	8530.84	-7383.05	4496.51	39°59'51.737"N	104°59'24.964"W	1.12	
15562.00	90.280	177.040	7771.53	8621.74	-7478.89	4502.00	39°59'50.790"N	104°59'24.894"W	0.67	
15657.00	90.570	176.960	7770.82	8711.54	-7573.76	4506.97	39°59'49.853"N	104°59'24.831"W	0.32	



Actual Wellpath Report

COYOTE TRAILS 34S-20-16N AWP

Page 7 of 11



REFERENCE WELLPATH IDENTIFICATION

Operator	EXTRACTION OIL & GAS	Slot	SLOT#01 COYOTE TRAILS 34S-20-16N (1144'FSL & 2031'FEL, SEC.28)
Area	COLORADO	Well	COYOTE TRAILS 34S-20-16N
Field	WELD COUNTY (NAD83/TRUE NORTH)	Wellbore	COYOTE TRAILS 34S-20-16N AWP
Facility	SEC.28-T01N-R68W		

WELLPATH DATA (189 stations)

MD [ft]	Inclination [°]	Azimuth [°]	TVD [ft]	Vert Sect [ft]	North [ft]	East [ft]	Latitude	Longitude	DLS [°/100ft]	Comments
15752.00	90.430	177.180	7769.99	8801.30	-7668.63	4511.83	39°59'48.915"N	104°59'24.768"W	0.27	
15848.00	90.290	177.430	7769.39	8891.88	-7764.52	4516.34	39°59'47.968"N	104°59'24.711"W	0.30	
15943.00	90.510	177.420	7768.73	8981.45	-7859.42	4520.61	39°59'47.030"N	104°59'24.656"W	0.23	
16038.00	90.790	177.430	7767.65	9071.01	-7954.32	4524.88	39°59'46.092"N	104°59'24.601"W	0.29	
16134.00	91.090	177.440	7766.07	9161.51	-8050.21	4529.17	39°59'45.144"N	104°59'24.546"W	0.31	
16231.00	91.650	180.310	7763.76	9252.08	-8147.16	4531.08	39°59'44.186"N	104°59'24.522"W	3.01	
16327.00	89.910	180.310	7762.45	9340.86	-8243.14	4530.56	39°59'43.238"N	104°59'24.529"W	1.81	
16422.00	89.620	179.570	7762.84	9428.95	-8338.14	4530.66	39°59'42.299"N	104°59'24.528"W	0.84	
16517.00	89.600	180.250	7763.48	9517.06	-8433.14	4530.81	39°59'41.360"N	104°59'24.526"W	0.72	
16613.00	89.790	178.450	7764.00	9606.44	-8529.13	4531.89	39°59'40.412"N	104°59'24.513"W	1.89	
16708.00	90.000	179.970	7764.17	9694.98	-8624.11	4533.20	39°59'39.473"N	104°59'24.496"W	1.62	
16804.00	89.720	182.370	7764.40	9783.21	-8720.09	4531.24	39°59'38.524"N	104°59'24.521"W	2.52	
16899.00	89.340	181.460	7765.18	9870.02	-8815.03	4528.07	39°59'37.586"N	104°59'24.562"W	1.04	
16994.00	89.600	180.940	7766.06	9957.31	-8910.00	4526.08	39°59'36.648"N	104°59'24.588"W	0.61	
17089.00	89.870	180.030	7766.50	10045.06	-9005.00	4525.28	39°59'35.709"N	104°59'24.599"W	1.00	
17185.00	89.670	180.300	7766.89	10133.94	-9101.00	4525.00	39°59'34.760"N	104°59'24.602"W	0.35	
17280.00	89.900	180.850	7767.24	10221.63	-9195.99	4524.05	39°59'33.821"N	104°59'24.615"W	0.63	
17376.00	89.650	181.410	7767.62	10309.89	-9291.97	4522.15	39°59'32.873"N	104°59'24.639"W	0.64	
17471.00	89.620	182.340	7768.23	10396.73	-9386.92	4519.04	39°59'31.935"N	104°59'24.680"W	0.98	
17567.00	89.620	183.110	7768.86	10483.90	-9482.81	4514.48	39°59'30.987"N	104°59'24.738"W	0.80	
17663.00	89.590	184.400	7769.52	10570.33	-9578.60	4508.19	39°59'30.040"N	104°59'24.819"W	1.34	
17758.00	89.700	182.750	7770.11	10655.99	-9673.41	4502.27	39°59'29.103"N	104°59'24.896"W	1.74	
17853.00	89.600	182.120	7770.69	10742.45	-9768.32	4498.23	39°59'28.165"N	104°59'24.948"W	0.67	
17948.00	89.520	181.490	7771.42	10829.34	-9863.27	4495.24	39°59'27.227"N	104°59'24.987"W	0.67	
18044.00	89.120	180.170	7772.56	10917.78	-9959.25	4493.85	39°59'26.279"N	104°59'25.005"W	1.44	
18139.00	89.520	179.230	7773.69	11006.02	-10054.24	4494.35	39°59'25.340"N	104°59'24.998"W	1.08	
18235.00	89.870	178.500	7774.20	11095.70	-10150.22	4496.25	39°59'24.391"N	104°59'24.974"W	0.84	
18330.00	89.820	177.460	7774.46	11184.95	-10245.16	4499.60	39°59'23.453"N	104°59'24.931"W	1.10	
18426.00	90.190	177.620	7774.45	11275.40	-10341.07	4503.72	39°59'22.505"N	104°59'24.879"W	0.42	
18521.00	89.960	177.260	7774.33	11364.96	-10435.97	4507.96	39°59'21.567"N	104°59'24.824"W	0.45	



Actual Wellpath Report

COYOTE TRAILS 34S-20-16N AWP

Page 8 of 11



REFERENCE WELLPATH IDENTIFICATION			
Operator	EXTRACTION OIL & GAS	Slot	SLOT#01 COYOTE TRAILS 34S-20-16N (1144'FSL & 2031'FEL, SEC.28)
Area	COLORADO	Well	COYOTE TRAILS 34S-20-16N
Field	WELD COUNTY (NAD83/TRUE NORTH)	Wellbore	COYOTE TRAILS 34S-20-16N AWP
Facility	SEC.28-T01N-R68W		

WELLPATH DATA (189 stations)										
MD [ft]	Inclination [°]	Azimuth [°]	TVD [ft]	Vert Sect [ft]	North [ft]	East [ft]	Latitude	Longitude	DLS °/100ft	Comments
18617.00	89.980	176.770	7774.38	11455.70	-10531.84	4512.96	39°59'20.620"N	104°59'24.760"W	0.51	
18713.00	90.230	176.650	7774.20	11546.61	-10627.69	4518.47	39°59'19.673"N	104°59'24.690"W	0.29	
18808.00	90.130	177.440	7773.90	11636.39	-10722.56	4523.37	39°59'18.735"N	104°59'24.627"W	0.84	
18903.00	90.000	177.390	7773.79	11725.96	-10817.46	4527.65	39°59'17.797"N	104°59'24.572"W	0.15	
18999.00	90.130	177.390	7773.68	11816.49	-10913.36	4532.03	39°59'16.850"N	104°59'24.516"W	0.14	
19094.00	90.060	178.310	7773.53	11905.83	-11008.29	4535.59	39°59'15.912"N	104°59'24.471"W	0.97	
19189.00	90.260	177.860	7773.26	11995.03	-11103.24	4538.76	39°59'14.973"N	104°59'24.430"W	0.52	
19280.00	90.370	178.210	7772.76	12080.50	-11194.18	4541.88	39°59'14.075"N	104°59'24.390"W	0.40	BAKER DRILLED USING THIRD PARTY MWD- LAST SURVEY (224'FSL & 1995'FWL, SEC.03)
19307.00	90.370	178.210	7772.59	12105.83	-11221.17	4542.73	39°59'13.808"N	104°59'24.380"W	0.00	PROJECTION TO BIT (197'FSL & 1992'FWL, SEC.03)



Actual Wellpath Report

COYOTE TRAILS 34S-20-16N AWP

Page 9 of 11



REFERENCE WELLPATH IDENTIFICATION			
Operator	EXTRACTION OIL & GAS	Slot	SLOT#01 COYOTE TRAILS 34S-20-16N (1144'FSL & 2031'FEL, SEC.28)
Area	COLORADO	Well	COYOTE TRAILS 34S-20-16N
Field	WELD COUNTY (NAD83/TRUE NORTH)	Wellbore	COYOTE TRAILS 34S-20-16N AWB
Facility	SEC.28-T01N-R68W		

TARGETS								
Name	TVD [ft]	North [ft]	East [ft]	Grid East [US ft]	Grid North [US ft]	Latitude	Longitude	Shape
SEC.03-T01S-R68W	0.00	0.00	0.00	3138269.92	1249778.85	40°01'04.703"N	105°00'22.741"W	polygon
SEC.04-T01S-R68W	0.00	0.00	0.00	3138269.92	1249778.85	40°01'04.703"N	105°00'22.741"W	polygon
SEC.27-T01N-R68W	0.00	0.00	0.00	3138269.92	1249778.85	40°01'04.703"N	105°00'22.741"W	point
SEC.28-T01N-R68W	0.00	0.00	0.00	3138269.92	1249778.85	40°01'04.703"N	105°00'22.741"W	polygon
SEC.33-T01N-R68W	0.00	0.00	0.00	3138269.92	1249778.85	40°01'04.703"N	105°00'22.741"W	polygon
SEC.34-T01N-R68W	0.00	0.00	0.00	3138269.92	1249778.85	40°01'04.703"N	105°00'22.741"W	polygon
COYOTE TRAILS 34S-20-16N BHL (150'FSL & 1992'FWL, SEC.03)	7750.00	-11268.11	4539.21	3142871.62	1238536.60	39°59'13.344"N	104°59'24.425"W	point
COYOTE TRAILS 34S-20-16N LP (460'FNL & 2402'FWL, SEC.34)	7750.00	-1582.13	4434.96	3142713.46	1248221.49	40°00'49.064"N	104°59'25.742"W	point
SEC.03-T01S-R68W (150'FSL SETBACKS)	7900.00	0.00	0.00	3138269.92	1249778.85	40°01'04.703"N	105°00'22.741"W	polygon
SEC.34-T01N-R68W (460'FNL SETBACKS)	7900.00	0.00	0.00	3138269.92	1249778.85	40°01'04.703"N	105°00'22.741"W	polygon



Actual Wellpath Report

COYOTE TRAILS 34S-20-16N AWP

Page 10 of 11



REFERENCE WELLPATH IDENTIFICATION			
Operator	EXTRACTION OIL & GAS	Slot	SLOT#01 COYOTE TRAILS 34S-20-16N (1144'FSL & 2031'FEL, SEC.28)
Area	COLORADO	Well	COYOTE TRAILS 34S-20-16N
Field	WELD COUNTY (NAD83/TRUE NORTH)	Wellbore	COYOTE TRAILS 34S-20-16N AWB
Facility	SEC.28-T01N-R68W		

WELLPATH COMPOSITION - Ref Wellbore: COYOTE TRAILS 34S-20-16N AWB Ref Wellpath: COYOTE TRAILS 34S-20-16N AWP				
Start MD [ft]	End MD [ft]	Positional Uncertainty Model	Log Name/Comment	Wellbore
29.00	1555.00	ISCWSA MWD, Rev. 4 (Standard)	INTERGRITY DIRECTIONAL SURVEYS <224-1555>	COYOTE TRAILS 34S-20-16N AWB
1555.00	19280.00	ISCWSA MWD, Rev. 4 (Standard)	BAKER DRILLED USING THIRD PARTY MWD <1665-19280>	COYOTE TRAILS 34S-20-16N AWB
19280.00	19307.00	Blind Drilling (std)	Projection to bit	COYOTE TRAILS 34S-20-16N AWB



Actual Wellpath Report

COYOTE TRAILS 34S-20-16N AWP
Page 11 of 11



REFERENCE WELLPATH IDENTIFICATION			
Operator	EXTRACTION OIL & GAS	Slot	SLOT#01 COYOTE TRAILS 34S-20-16N (1144'FSL & 2031'FEL, SEC.28)
Area	COLORADO	Well	COYOTE TRAILS 34S-20-16N
Field	WELD COUNTY (NAD83/TRUE NORTH)	Wellbore	COYOTE TRAILS 34S-20-16N AWP
Facility	SEC.28-T01N-R68W		

WELLPATH COMMENTS				
MD [ft]	Inclination [°]	Azimuth [°]	TVD [ft]	Comment
1555.00	28.100	103.210	1501.18	TIED TO SURFACE SURVEYS
1665.00	28.930	104.200	1597.84	BAKER DRILLED USING THIRD PARTY MWD- FIRST SURVEY
9670.00	79.392	177.611	7733.35	CROSSED 460'SETBACK (460'FNL & 2415'FWL, SEC.34)
19280.00	90.370	178.210	7772.76	BAKER DRILLED USING THIRD PARTY MWD- LAST SURVEY (224'FSL & 1995'FWL, SEC.03)
19307.00	90.370	178.210	7772.59	PROJECTION TO BIT (197'FSL & 1992'FWL, SEC.03)