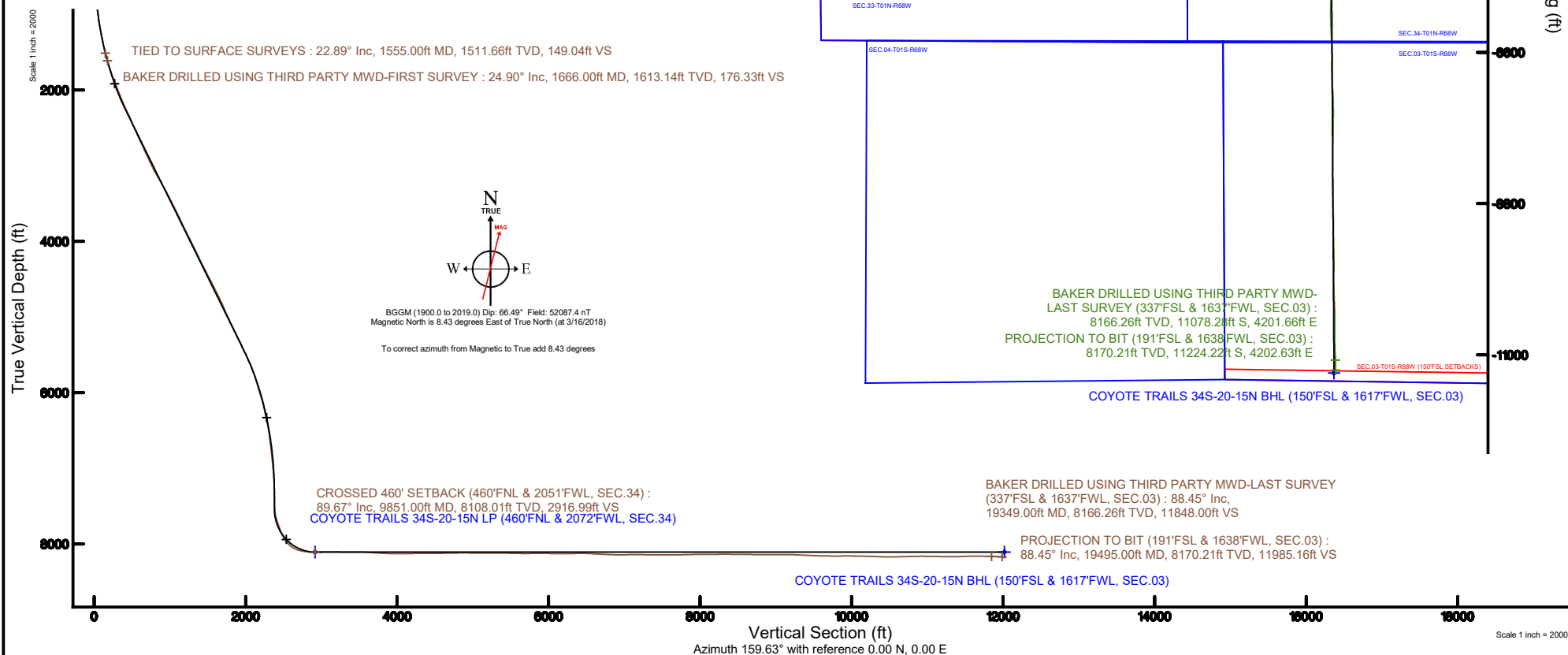


Location:	COLORADO	Slot:	SLOT#02 COYOTE TRAILS 34S-20-15N (1145FSL & 2049FEL, SEC.28)
Field:	WELD COUNTY (NAD83/TRUE NORTH)	Well:	COYOTE TRAILS 34S-20-15N
Facility:	SEC.28-T01N-R68W	Wellbore:	COYOTE TRAILS 34S-20-15N PWB
Plot reference wellpath is COYOTE TRAILS 34S-20-15N PWP (REV-A.0)		Grid System: NAD83 / Lambert Colorado SP, Northern Zone (501), US feet	
True vertical depths are referenced to PATTERSON 901 (29KB) (RKB)		* = Wellpath was transformed from a different geodetic datum	
Measured depths are referenced to PATTERSON 901 (29KB) (RKB)		North Reference: True north	
PATTERSON 901 (29KB) (RKB) to Mean Sea Level: 5302 feet		Scale: True distance	
Mean Sea Level to Mud line (At Slot: SLOT#02 COYOTE TRAILS 34S-20-15N (1145FSL & 2049FEL, SEC.28)): 0 feet		Depths are in feet	
Coordinates are in feet referenced to Slot		Created by: ingnjanm on 2018-03-20	
		Database: Denver	





Actual Wellpath Report

COYOTE TRAILS 34S-20-15N AWP

Page 1 of 11



REFERENCE WELLPATH IDENTIFICATION

Operator	EXTRACTION OIL & GAS	Slot	SLOT#02 COYOTE TRAILS 34S-20-15N (1145'FSL & 2049'FEL, SEC.28)
Area	COLORADO	Well	COYOTE TRAILS 34S-20-15N
Field	WELD COUNTY (NAD83/TRUE NORTH)	Wellbore	COYOTE TRAILS 34S-20-15N AWP
Facility	SEC.28-T01N-R68W		

REPORT SETUP INFORMATION

Projection System	NAD83 / Lambert Colorado SP, Northern Zone (501), US feet	Software System	WellArchitect® 5.0
North Reference	True	User	Ingmjmr
Scale	0.999965	Report Generated	3/20/2018 at 2:16:10 PM
Convergence at slot	0.32° East	Database/Source file	Denver/COYOTE_TRAILS_34S-20-15N_AWP.xml

WELLPATH LOCATION

	Local coordinates		Grid coordinates		Geographic coordinates	
	North[ft]	East[ft]	Easting[US ft]	Northing[US ft]	Latitude	Longitude
Slot Location	0.00	-18.21	3138251.71	1249778.75	40°01'04.703"N	105°00'22.975"W
Facility Reference Pt			3138269.92	1249778.85	40°01'04.703"N	105°00'22.741"W
Field Reference Pt			3185481.27	1419166.81	40°28'55.560"N	104°49'59.556"W

WELLPATH DATUM

Calculation method	Minimum curvature	PATTERSON 901 (29'KB) (RKB) to Facility Vertical Datum	5302.00ft
Horizontal Reference Pt	Slot	PATTERSON 901 (29'KB) (RKB) to Mean Sea Level	5302.00ft
Vertical Reference Pt	PATTERSON 901 (29'KB) (RKB)	PATTERSON 901 (29'KB) (RKB) to Mud Line at Slot (SLOT#02 COYOTE TRAILS 34S-20-15N (1145'FSL & 2049'FEL, SEC.28))	5302.00ft
MD Reference Pt	PATTERSON 901 (29'KB) (RKB)	Section Origin	N 0.00, E 0.00 ft
Field Vertical Reference	Mean Sea Level	Section Azimuth	159.47°

REFERENCE WELLPATH IDENTIFICATION

Operator	EXTRACTION OIL & GAS	Slot	SLOT#02 COYOTE TRAILS 34S-20-15N (1145'FSL & 2049'FEL, SEC.28)
Area	COLORADO	Well	COYOTE TRAILS 34S-20-15N
Field	WELD COUNTY (NAD83/TRUE NORTH)	Wellbore	COYOTE TRAILS 34S-20-15N AWB
Facility	SEC.28-T01N-R68W		

WELLPATH DATA (189 stations)

MD [ft]	Inclination [°]	Azimuth [°]	TVD [ft]	Vert Sect [ft]	North [ft]	East [ft]	Latitude	Longitude	DLS [°/100ft]	Comments
1555.00	22.890	106.030	1511.66	149.76	-49.96	293.66	40°01'04.209"N	105°00'19.201"W	1.77	TIED TO SURFACE SURVEYS
1666.00	24.900	107.940	1613.14	177.16	-63.12	336.64	40°01'04.079"N	105°00'18.648"W	1.94	BAKER DRILLED USING THIRD PARTY MWD-FIRST SURVEY
1762.00	26.130	110.590	1699.78	203.63	-76.78	375.66	40°01'03.944"N	105°00'18.147"W	1.75	
1857.00	28.150	112.050	1784.31	232.56	-92.55	416.02	40°01'03.788"N	105°00'17.628"W	2.24	
1952.00	30.580	109.610	1867.10	263.30	-109.08	459.56	40°01'03.625"N	105°00'17.068"W	2.85	
2047.00	32.290	106.130	1948.17	294.03	-124.24	506.71	40°01'03.475"N	105°00'16.462"W	2.62	
2143.00	34.140	106.030	2028.48	325.39	-138.81	557.24	40°01'03.331"N	105°00'15.813"W	1.93	
2238.00	36.220	103.640	2106.12	357.04	-152.79	610.14	40°01'03.193"N	105°00'15.133"W	2.63	
2334.00	39.440	102.060	2181.94	389.40	-165.85	667.54	40°01'03.064"N	105°00'14.395"W	3.50	
2429.00	40.930	102.540	2254.52	422.63	-178.91	727.43	40°01'02.935"N	105°00'13.625"W	1.60	
2525.00	41.510	101.920	2326.73	456.86	-192.31	789.26	40°01'02.802"N	105°00'12.831"W	0.74	
2621.00	39.680	100.970	2399.62	489.94	-204.72	850.47	40°01'02.680"N	105°00'12.044"W	2.01	
2716.00	40.540	100.080	2472.28	521.50	-215.89	910.65	40°01'02.569"N	105°00'11.271"W	1.09	
2812.00	40.160	99.680	2545.44	552.96	-226.56	971.88	40°01'02.464"N	105°00'10.484"W	0.48	
2907.00	41.840	101.640	2617.13	585.25	-238.10	1033.12	40°01'02.350"N	105°00'09.696"W	2.23	
3003.00	41.910	101.210	2688.62	619.16	-250.80	1095.93	40°01'02.224"N	105°00'08.889"W	0.31	
3098.00	41.640	100.680	2759.46	652.20	-262.81	1158.07	40°01'02.106"N	105°00'08.090"W	0.47	
3194.00	41.270	102.610	2831.42	686.04	-275.64	1220.31	40°01'01.979"N	105°00'07.291"W	1.39	
3289.00	40.150	102.990	2903.43	720.08	-289.36	1280.73	40°01'01.843"N	105°00'06.514"W	1.21	
3385.00	40.170	103.080	2976.80	754.31	-303.33	1341.05	40°01'01.705"N	105°00'05.739"W	0.06	
3480.00	40.530	106.590	3049.21	789.90	-319.08	1400.48	40°01'01.549"N	105°00'04.975"W	2.42	
3576.00	43.160	107.250	3120.71	828.84	-337.72	1461.75	40°01'01.365"N	105°00'04.187"W	2.78	
3671.00	43.130	107.080	3190.03	868.56	-356.89	1523.82	40°01'01.176"N	105°00'03.390"W	0.13	
3766.00	43.870	106.520	3258.94	908.21	-375.79	1586.42	40°01'00.989"N	105°00'02.585"W	0.88	
3862.00	43.980	104.880	3328.09	947.57	-393.81	1650.53	40°01'00.811"N	105°00'01.761"W	1.19	
3957.00	42.570	103.620	3397.25	984.72	-409.85	1713.64	40°01'00.652"N	105°00'00.950"W	1.74	
4052.00	42.410	103.020	3467.30	1020.46	-424.63	1776.08	40°01'00.506"N	105°00'00.147"W	0.46	
4148.00	42.650	102.090	3538.05	1055.88	-438.74	1839.42	40°01'00.367"N	104°59'59.333"W	0.70	
4243.00	42.680	103.190	3607.91	1091.10	-452.83	1902.24	40°01'00.227"N	104°59'58.526"W	0.79	
4338.00	42.010	102.280	3678.12	1126.20	-466.94	1964.66	40°01'00.088"N	104°59'57.724"W	0.96	

REFERENCE WELLPATH IDENTIFICATION

Operator	EXTRACTION OIL & GAS	Slot	SLOT#02 COYOTE TRAILS 34S-20-15N (1145'FSL & 2049'FEL, SEC.28)
Area	COLORADO	Well	COYOTE TRAILS 34S-20-15N
Field	WELD COUNTY (NAD83/TRUE NORTH)	Wellbore	COYOTE TRAILS 34S-20-15N AWP
Facility	SEC.28-T01N-R68W		

WELLPATH DATA (189 stations)

MD [ft]	Inclination [°]	Azimuth [°]	TVD [ft]	Vert Sect [ft]	North [ft]	East [ft]	Latitude	Longitude	DLS [°/100ft]	Comments
4434.00	41.040	101.390	3749.99	1160.27	-479.99	2026.95	40°00'59.959"N	104°59'56.923"W	1.18	
4529.00	41.380	103.030	3821.46	1194.11	-493.23	2088.11	40°00'59.828"N	104°59'56.137"W	1.19	
4625.00	41.560	105.130	3893.40	1230.22	-508.70	2149.77	40°00'59.675"N	104°59'55.345"W	1.46	
4720.00	40.650	104.580	3964.98	1266.38	-524.71	2210.14	40°00'59.517"N	104°59'54.569"W	1.03	
4815.00	41.250	104.370	4036.74	1302.10	-540.28	2270.42	40°00'59.363"N	104°59'53.794"W	0.65	
4911.00	41.180	104.310	4108.95	1338.26	-555.94	2331.70	40°00'59.208"N	104°59'53.006"W	0.08	
5006.00	39.200	104.570	4181.52	1373.39	-571.23	2391.07	40°00'59.057"N	104°59'52.243"W	2.09	
5102.00	40.490	104.630	4255.22	1408.78	-586.73	2450.59	40°00'58.904"N	104°59'51.478"W	1.34	
5197.00	41.300	105.220	4327.03	1444.86	-602.75	2510.69	40°00'58.745"N	104°59'50.706"W	0.94	
5292.00	41.910	104.790	4398.07	1481.51	-619.08	2571.61	40°00'58.584"N	104°59'49.923"W	0.71	
5388.00	41.900	104.420	4469.52	1518.41	-635.25	2633.66	40°00'58.424"N	104°59'49.125"W	0.26	
5483.00	41.880	103.950	4540.24	1554.53	-650.79	2695.16	40°00'58.270"N	104°59'48.335"W	0.33	
5579.00	42.220	104.120	4611.52	1591.01	-666.39	2757.54	40°00'58.116"N	104°59'47.533"W	0.37	
5674.00	41.780	103.870	4682.12	1627.03	-681.76	2819.22	40°00'57.964"N	104°59'46.741"W	0.50	
5769.00	40.920	103.350	4753.44	1662.26	-696.53	2880.22	40°00'57.818"N	104°59'45.957"W	0.97	
5865.00	39.290	103.240	4826.86	1696.68	-710.75	2940.40	40°00'57.677"N	104°59'45.183"W	1.70	
5984.00	37.680	102.900	4920.01	1737.66	-727.50	3012.53	40°00'57.512"N	104°59'44.256"W	1.36	
6080.00	38.780	104.320	4995.42	1771.00	-741.49	3070.26	40°00'57.374"N	104°59'43.514"W	1.47	
6175.00	39.640	104.290	5069.03	1805.30	-756.33	3128.46	40°00'57.227"N	104°59'42.766"W	0.91	
6271.00	42.020	103.210	5141.66	1840.64	-771.23	3189.42	40°00'57.079"N	104°59'41.983"W	2.59	
6366.00	41.920	103.180	5212.30	1875.91	-785.73	3251.27	40°00'56.936"N	104°59'41.188"W	0.11	
6461.00	41.330	103.060	5283.31	1910.87	-800.06	3312.73	40°00'56.794"N	104°59'40.398"W	0.63	
6557.00	39.770	101.980	5356.25	1944.91	-813.60	3373.65	40°00'56.661"N	104°59'39.615"W	1.78	
6653.00	40.200	103.090	5429.81	1978.57	-826.99	3433.87	40°00'56.528"N	104°59'38.841"W	0.87	
6748.00	41.270	103.580	5501.79	2013.11	-841.29	3494.19	40°00'56.387"N	104°59'38.066"W	1.18	
6843.00	40.720	104.080	5573.50	2048.28	-856.18	3554.70	40°00'56.239"N	104°59'37.288"W	0.67	
6939.00	36.240	101.890	5648.63	2081.29	-869.65	3612.87	40°00'56.106"N	104°59'36.540"W	4.88	
7035.00	33.170	101.880	5727.54	2110.59	-880.91	3666.35	40°00'55.995"N	104°59'35.853"W	3.20	
7130.00	30.400	102.200	5808.29	2137.52	-891.34	3715.29	40°00'55.892"N	104°59'35.224"W	2.92	
7226.00	28.160	103.520	5892.02	2163.33	-901.77	3761.06	40°00'55.789"N	104°59'34.636"W	2.43	

REFERENCE WELLPATH IDENTIFICATION

Operator	EXTRACTION OIL & GAS	Slot	SLOT#02 COYOTE TRAILS 34S-20-15N (1145'FSL & 2049'FEL, SEC.28)
Area	COLORADO	Well	COYOTE TRAILS 34S-20-15N
Field	WELD COUNTY (NAD83/TRUE NORTH)	Wellbore	COYOTE TRAILS 34S-20-15N AWB
Facility	SEC.28-T01N-R68W		

WELLPATH DATA (189 stations) † = interpolated/extrapolated station

MD (ft)	Inclination [°]	Azimuth [°]	TVD (ft)	Vert Sect (ft)	North (ft)	East (ft)	Latitude	Longitude	DLS [°/100ft]	Comments
7321.00	27.710	104.580	5975.95	2188.59	-912.57	3804.23	40°00'55.682"N	104°59'34.081"W	0.71	
7417.00	26.630	108.660	6061.36	2215.02	-925.08	3846.22	40°00'55.558"N	104°59'33.541"W	2.24	
7512.00	22.360	104.830	6147.80	2238.94	-936.52	3883.88	40°00'55.445"N	104°59'33.057"W	4.79	
7608.00	20.310	107.430	6237.22	2259.76	-946.19	3917.43	40°00'55.349"N	104°59'32.626"W	2.35	
7703.00	19.580	110.310	6326.52	2280.31	-956.65	3948.09	40°00'55.246"N	104°59'32.232"W	1.29	
7799.00	17.580	105.850	6417.52	2299.43	-966.19	3977.13	40°00'55.152"N	104°59'31.859"W	2.55	
7894.00	15.270	107.540	6508.63	2315.66	-973.88	4002.86	40°00'55.076"N	104°59'31.528"W	2.48	
7990.00	12.950	99.580	6601.74	2328.85	-979.48	4025.53	40°00'55.020"N	104°59'31.237"W	3.15	
8085.00	11.820	105.400	6694.53	2339.90	-983.84	4045.41	40°00'54.977"N	104°59'30.981"W	1.77	
8181.00	10.470	106.710	6788.72	2350.95	-988.96	4063.24	40°00'54.927"N	104°59'30.752"W	1.43	
8276.00	9.400	106.300	6882.29	2360.82	-993.62	4078.96	40°00'54.880"N	104°59'30.550"W	1.13	
8372.00	8.590	112.220	6977.11	2370.39	-998.53	4093.12	40°00'54.832"N	104°59'30.368"W	1.28	
8467.00	7.590	110.960	7071.17	2379.36	-1003.46	4105.54	40°00'54.783"N	104°59'30.209"W	1.07	
8563.00	5.700	89.330	7166.53	2385.18	-1005.67	4116.23	40°00'54.761"N	104°59'30.071"W	3.23	
8658.00	2.900	92.350	7261.26	2387.72	-1005.71	4123.35	40°00'54.761"N	104°59'29.980"W	2.96	
8754.00	2.540	79.760	7357.15	2389.04	-1005.44	4127.87	40°00'54.764"N	104°59'29.922"W	0.72	
8849.00	1.730	86.650	7452.08	2389.84	-1004.98	4131.38	40°00'54.768"N	104°59'29.877"W	0.89	
8945.00	5.230	175.990	7547.93	2394.47	-1009.26	4133.13	40°00'54.726"N	104°59'29.854"W	5.72	
9040.00	14.240	186.840	7641.48	2409.02	-1025.22	4132.04	40°00'54.568"N	104°59'29.868"W	9.64	
9136.00	22.280	191.210	7732.57	2435.03	-1054.84	4127.09	40°00'54.275"N	104°59'29.932"W	8.49	
9231.00	26.370	194.570	7819.12	2467.62	-1092.94	4118.28	40°00'53.899"N	104°59'30.045"W	4.54	
9326.00	31.770	190.750	7902.13	2506.29	-1137.97	4108.29	40°00'53.454"N	104°59'30.173"W	6.01	
9422.00	41.550	184.500	7979.08	2556.88	-1194.69	4101.06	40°00'52.893"N	104°59'30.267"W	10.89	
9517.00	56.650	181.100	8041.11	2622.71	-1266.20	4097.81	40°00'52.187"N	104°59'30.309"W	16.12	
9613.00	73.500	178.560	8081.42	2704.07	-1352.93	4098.20	40°00'51.330"N	104°59'30.304"W	17.71	
9709.00	83.650	178.690	8100.42	2792.84	-1446.88	4100.45	40°00'50.401"N	104°59'30.275"W	10.57	
9804.00	88.220	179.340	8107.15	2882.12	-1541.60	4102.08	40°00'49.465"N	104°59'30.254"W	4.86	
9851.00†	89.674	179.937	8108.01	2926.23	-1588.59	4102.38	40°00'49.001"N	104°59'30.251"W	3.34	CROSSED 460' SETBACK (460'FNL & 2051'FWL, SEC.34)
9900.00	91.190	180.560	8107.64	2972.04	-1637.59	4102.16	40°00'48.517"N	104°59'30.253"W	3.34	
9995.00	91.920	180.230	8105.06	3060.74	-1732.55	4101.51	40°00'47.578"N	104°59'30.262"W	0.84	

REFERENCE WELLPATH IDENTIFICATION			
Operator	EXTRACTION OIL & GAS	Slot	SLOT#02 COYOTE TRAILS 34S-20-15N (1145'FSL & 2049'FEL, SEC.28)
Area	COLORADO	Well	COYOTE TRAILS 34S-20-15N
Field	WELD COUNTY (NAD83/TRUE NORTH)	Wellbore	COYOTE TRAILS 34S-20-15N AWB
Facility	SEC.28-T01N-R68W		

WELLPATH DATA (189 stations)										
MD [ft]	Inclination [°]	Azimuth [°]	TVD [ft]	Vert Sect [ft]	North [ft]	East [ft]	Latitude	Longitude	DLS [°/100ft]	Comments
10091.00	89.130	178.220	8104.18	3151.08	-1828.52	4102.81	40°00'46.630"N	104°59'30.245"W	3.58	
10186.00	88.730	176.550	8105.96	3241.45	-1923.41	4107.14	40°00'45.692"N	104°59'30.190"W	1.81	
10282.00	88.560	174.410	8108.23	3333.70	-2019.07	4114.70	40°00'44.747"N	104°59'30.093"W	2.24	
10377.00	89.670	175.850	8109.70	3425.16	-2113.72	4122.77	40°00'43.811"N	104°59'29.990"W	1.91	
10473.00	91.480	176.340	8108.73	3517.14	-2209.48	4129.30	40°00'42.865"N	104°59'29.906"W	1.95	
10569.00	86.280	177.140	8110.61	3608.76	-2305.28	4134.76	40°00'41.918"N	104°59'29.836"W	5.48	
10664.00	86.130	176.010	8116.90	3699.36	-2399.90	4140.42	40°00'40.983"N	104°59'29.763"W	1.20	
10760.00	87.450	179.240	8122.27	3790.43	-2495.65	4144.39	40°00'40.037"N	104°59'29.712"W	3.63	
10855.00	87.790	181.820	8126.22	3879.00	-2590.56	4143.52	40°00'39.099"N	104°59'29.724"W	2.74	
10951.00	90.440	183.140	8127.70	3967.34	-2686.44	4139.36	40°00'38.151"N	104°59'29.778"W	3.08	
11046.00	89.650	172.290	8127.63	4057.43	-2781.23	4143.14	40°00'37.215"N	104°59'29.729"W	11.45	
11142.00	90.690	172.990	8127.34	4150.91	-2876.43	4155.44	40°00'36.274"N	104°59'29.571"W	1.31	
11237.00	90.660	181.250	8126.22	4241.35	-2971.22	4160.21	40°00'35.337"N	104°59'29.510"W	8.69	
11333.00	90.880	180.520	8124.93	4330.72	-3067.20	4158.73	40°00'34.389"N	104°59'29.529"W	0.79	
11428.00	89.890	183.430	8124.29	4418.47	-3162.13	4155.45	40°00'33.450"N	104°59'29.572"W	3.24	
11524.00	90.210	185.420	8124.21	4505.51	-3257.84	4148.05	40°00'32.505"N	104°59'29.667"W	2.10	
11619.00	90.550	182.420	8123.58	4591.98	-3352.61	4141.55	40°00'31.568"N	104°59'29.751"W	3.18	
11714.00	90.870	179.820	8122.40	4680.26	-3447.57	4139.70	40°00'30.630"N	104°59'29.775"W	2.76	
11810.00	91.220	180.160	8120.65	4770.16	-3543.56	4139.71	40°00'29.681"N	104°59'29.775"W	0.51	
11905.00	90.680	179.260	8119.08	4859.28	-3638.54	4140.19	40°00'28.742"N	104°59'29.769"W	1.10	
12001.00	88.540	179.790	8119.73	4949.45	-3734.53	4140.99	40°00'27.794"N	104°59'29.759"W	2.30	
12096.00	89.420	179.050	8121.42	5038.74	-3829.51	4141.95	40°00'26.855"N	104°59'29.747"W	1.21	
12192.00	89.760	180.090	8122.11	5128.89	-3925.50	4142.67	40°00'25.907"N	104°59'29.738"W	1.14	
12287.00	90.040	178.540	8122.27	5218.25	-4020.49	4143.81	40°00'24.968"N	104°59'29.723"W	1.66	
12383.00	90.640	178.900	8121.70	5308.88	-4116.47	4145.95	40°00'24.019"N	104°59'29.696"W	0.73	
12478.00	89.310	179.340	8121.74	5398.35	-4211.45	4147.41	40°00'23.081"N	104°59'29.677"W	1.47	
12574.00	88.980	177.000	8123.18	5489.26	-4307.39	4150.48	40°00'22.133"N	104°59'29.638"W	2.46	
12669.00	88.520	179.360	8125.25	5579.22	-4402.31	4153.49	40°00'21.195"N	104°59'29.600"W	2.53	
12765.00	89.780	180.220	8126.67	5669.23	-4498.29	4153.84	40°00'20.246"N	104°59'29.595"W	1.59	
12860.00	90.520	180.720	8126.43	5757.92	-4593.29	4153.07	40°00'19.307"N	104°59'29.605"W	0.94	

REFERENCE WELLPATH IDENTIFICATION			
Operator	EXTRACTION OIL & GAS	Slot	SLOT#02 COYOTE TRAILS 34S-20-15N (1145'FSL & 2049'FEL, SEC.28)
Area	COLORADO	Well	COYOTE TRAILS 34S-20-15N
Field	WELD COUNTY (NAD83/TRUE NORTH)	Wellbore	COYOTE TRAILS 34S-20-15N AWB
Facility	SEC.28-T01N-R68W		

WELLPATH DATA (189 stations)										
MD [ft]	Inclination [°]	Azimuth [°]	TVD [ft]	Vert Sect [ft]	North [ft]	East [ft]	Latitude	Longitude	DLS [°/100ft]	Comments
12956.00	91.040	180.930	8125.12	5847.32	-4689.27	4151.68	40°00'18.359"N	104°59'29.623"W	0.58	
13051.00	89.090	179.250	8125.01	5936.23	-4784.26	4151.53	40°00'17.420"N	104°59'29.626"W	2.71	
13147.00	88.870	178.350	8126.72	6026.81	-4880.22	4153.54	40°00'16.472"N	104°59'29.600"W	0.96	
13242.00	88.940	177.980	8128.54	6116.78	-4975.16	4156.59	40°00'15.534"N	104°59'29.561"W	0.40	
13338.00	91.050	178.540	8128.54	6207.66	-5071.11	4159.50	40°00'14.585"N	104°59'29.524"W	2.27	
13434.00	90.480	182.070	8127.26	6297.36	-5167.08	4158.99	40°00'13.637"N	104°59'29.531"W	3.72	
13529.00	90.940	180.200	8126.08	6385.64	-5262.05	4157.11	40°00'12.698"N	104°59'29.555"W	2.03	
13625.00	89.450	180.660	8125.76	6475.29	-5358.05	4156.39	40°00'11.750"N	104°59'29.564"W	1.62	
13720.00	87.130	181.700	8128.59	6563.50	-5452.98	4154.43	40°00'10.812"N	104°59'29.590"W	2.68	
13815.00	87.250	182.460	8133.25	6651.10	-5547.80	4150.99	40°00'09.875"N	104°59'29.634"W	0.81	
13911.00	87.640	182.820	8137.53	6739.27	-5643.60	4146.57	40°00'08.928"N	104°59'29.691"W	0.55	
14006.00	87.770	183.620	8141.33	6826.15	-5738.37	4141.24	40°00'07.991"N	104°59'29.760"W	0.85	
14102.00	89.520	182.140	8143.60	6914.22	-5834.22	4136.42	40°00'07.044"N	104°59'29.822"W	2.39	
14197.00	90.560	181.050	8143.54	7002.23	-5929.18	4133.77	40°00'06.106"N	104°59'29.856"W	1.59	
14293.00	91.070	180.180	8142.17	7091.75	-6025.16	4132.74	40°00'05.157"N	104°59'29.870"W	1.05	
14388.00	89.160	177.530	8141.98	7181.36	-6120.13	4134.64	40°00'04.219"N	104°59'29.846"W	3.44	
14484.00	89.410	178.420	8143.18	7272.39	-6216.06	4138.03	40°00'03.271"N	104°59'29.802"W	0.96	
14579.00	89.510	177.650	8144.07	7362.44	-6311.00	4141.29	40°00'02.332"N	104°59'29.760"W	0.82	
14675.00	90.180	177.230	8144.33	7453.76	-6406.91	4145.58	40°00'01.385"N	104°59'29.706"W	0.82	
14770.00	90.000	177.310	8144.19	7544.21	-6501.80	4150.10	40°00'00.447"N	104°59'29.648"W	0.21	
14866.00	89.840	180.880	8144.32	7634.62	-6597.77	4151.62	39°59'59.498"N	104°59'29.628"W	3.72	
14961.00	90.600	180.850	8143.95	7723.08	-6692.76	4150.19	39°59'58.560"N	104°59'29.647"W	0.80	
15056.00	91.060	180.550	8142.58	7811.62	-6787.74	4149.02	39°59'57.621"N	104°59'29.662"W	0.58	
15152.00	92.040	178.120	8139.98	7901.87	-6883.69	4150.14	39°59'56.673"N	104°59'29.648"W	2.73	
15247.00	90.020	178.470	8138.27	7991.77	-6978.63	4152.96	39°59'55.735"N	104°59'29.612"W	2.16	
15343.00	89.270	176.790	8138.87	8082.98	-7074.54	4156.93	39°59'54.787"N	104°59'29.561"W	1.92	
15438.00	91.470	174.980	8138.25	8174.10	-7169.28	4163.75	39°59'53.851"N	104°59'29.474"W	3.00	
15534.00	91.120	178.780	8136.08	8265.66	-7265.10	4168.97	39°59'52.904"N	104°59'29.407"W	3.97	
15628.00	89.130	178.700	8135.88	8354.39	-7359.07	4171.04	39°59'51.975"N	104°59'29.380"W	2.12	
15723.00	89.560	179.730	8136.97	8443.80	-7454.05	4172.34	39°59'51.036"N	104°59'29.364"W	1.17	

REFERENCE WELLPATH IDENTIFICATION

Operator	EXTRACTION OIL & GAS	Slot	SLOT#02 COYOTE TRAILS 34S-20-15N (1145'FSL & 2049'FEL, SEC.28)
Area	COLORADO	Well	COYOTE TRAILS 34S-20-15N
Field	WELD COUNTY (NAD83/TRUE NORTH)	Wellbore	COYOTE TRAILS 34S-20-15N AWB
Facility	SEC.28-T01N-R68W		

WELLPATH DATA (189 stations)

MD [ft]	Inclination [°]	Azimuth [°]	TVD [ft]	Vert Sect [ft]	North [ft]	East [ft]	Latitude	Longitude	DLS [°/100ft]	Comments
15819.00	89.400	180.830	8137.84	8533.54	-7550.05	4171.87	39°59'50.088"N	104°59'29.370"W	1.16	
15915.00	89.240	180.290	8138.98	8623.10	-7646.04	4170.93	39°59'49.139"N	104°59'29.382"W	0.59	
16010.00	89.410	181.050	8140.10	8711.67	-7741.02	4169.82	39°59'48.200"N	104°59'29.397"W	0.82	
16105.00	89.900	182.200	8140.67	8799.65	-7835.98	4167.13	39°59'47.262"N	104°59'29.432"W	1.32	
16201.00	90.080	181.760	8140.68	8888.34	-7931.92	4163.81	39°59'46.314"N	104°59'29.475"W	0.50	
16296.00	90.140	180.990	8140.50	8976.48	-8026.89	4161.53	39°59'45.375"N	104°59'29.504"W	0.81	
16391.00	90.140	179.430	8140.27	9065.32	-8121.89	4161.18	39°59'44.437"N	104°59'29.509"W	1.64	
16487.00	89.360	179.390	8140.69	9155.57	-8217.88	4162.17	39°59'43.488"N	104°59'29.496"W	0.81	
16582.00	87.720	181.140	8143.11	9244.35	-8312.85	4161.73	39°59'42.550"N	104°59'29.502"W	2.52	
16678.00	87.430	180.440	8147.17	9333.70	-8408.75	4160.41	39°59'41.602"N	104°59'29.519"W	0.79	
16773.00	87.650	179.450	8151.25	9422.62	-8503.66	4160.50	39°59'40.664"N	104°59'29.518"W	1.07	
16869.00	88.010	178.700	8154.88	9512.99	-8599.58	4162.05	39°59'39.716"N	104°59'29.499"W	0.87	
16964.00	88.750	178.620	8157.57	9602.67	-8694.51	4164.27	39°59'38.778"N	104°59'29.470"W	0.78	
17059.00	89.030	178.350	8159.41	9692.47	-8789.46	4166.78	39°59'37.839"N	104°59'29.438"W	0.41	
17155.00	89.730	178.240	8160.45	9783.33	-8885.41	4169.64	39°59'36.891"N	104°59'29.402"W	0.74	
17250.00	90.870	177.930	8159.95	9873.36	-8980.36	4172.81	39°59'35.953"N	104°59'29.361"W	1.24	
17346.00	89.630	180.290	8159.53	9963.77	-9076.34	4174.30	39°59'35.004"N	104°59'29.342"W	2.78	
17442.00	89.380	179.500	8160.36	10053.73	-9172.33	4174.48	39°59'34.056"N	104°59'29.340"W	0.86	
17536.00	88.590	179.430	8162.03	10142.05	-9266.31	4175.36	39°59'33.127"N	104°59'29.329"W	0.84	
17631.00	88.540	179.380	8164.41	10231.33	-9361.28	4176.34	39°59'32.189"N	104°59'29.317"W	0.07	
17726.00	87.800	177.860	8167.44	10321.03	-9456.20	4178.63	39°59'31.251"N	104°59'29.287"W	1.78	
17821.00	87.990	178.570	8170.93	10410.93	-9551.09	4181.59	39°59'30.313"N	104°59'29.250"W	0.77	
17917.00	90.430	181.170	8172.25	10500.89	-9647.06	4181.80	39°59'29.364"N	104°59'29.247"W	3.71	
18012.00	91.250	180.950	8170.86	10589.21	-9742.03	4180.05	39°59'28.426"N	104°59'29.270"W	0.89	
18108.00	91.470	180.510	8168.58	10678.66	-9838.00	4178.82	39°59'27.477"N	104°59'29.286"W	0.51	
18203.00	91.080	179.750	8166.47	10767.53	-9932.98	4178.61	39°59'26.539"N	104°59'29.289"W	0.90	
18299.00	91.840	178.620	8164.02	10857.87	-10028.93	4179.97	39°59'25.591"N	104°59'29.271"W	1.42	
18394.00	89.380	178.180	8163.01	10947.72	-10123.88	4182.63	39°59'24.652"N	104°59'29.238"W	2.63	
18489.00	89.070	177.110	8164.30	11037.97	-10218.79	4186.53	39°59'23.714"N	104°59'29.188"W	1.17	
18585.00	88.520	178.680	8166.31	11129.03	-10314.70	4190.06	39°59'22.766"N	104°59'29.143"W	1.73	

REFERENCE WELLPATH IDENTIFICATION			
Operator	EXTRACTION OIL & GAS	Slot	SLOT#02 COYOTE TRAILS 34S-20-15N (1145'FSL & 2049'FEL, SEC.28)
Area	COLORADO	Well	COYOTE TRAILS 34S-20-15N
Field	WELD COUNTY (NAD83/TRUE NORTH)	Wellbore	COYOTE TRAILS 34S-20-15N AWB
Facility	SEC.28-T01N-R68W		

WELLPATH DATA (189 stations)										
MD (ft)	Inclination (°)	Azimuth (°)	TVD (ft)	Vert Sect (ft)	North (ft)	East (ft)	Latitude	Longitude	DLS (°/100ft)	Comments
18681.00	89.340	179.190	8168.11	11219.53	-10410.67	4191.84	39°59'21.818"N	104°59'29.120"W	1.01	
18776.00	89.110	180.560	8169.39	11308.56	-10505.66	4192.05	39°59'20.879"N	104°59'29.117"W	1.46	
18871.00	91.990	179.970	8168.48	11397.36	-10600.64	4191.61	39°59'19.941"N	104°59'29.123"W	3.09	
18967.00	92.110	179.910	8165.05	11487.24	-10696.58	4191.71	39°59'18.993"N	104°59'29.122"W	0.14	
19062.00	91.870	178.930	8161.75	11576.49	-10791.52	4192.67	39°59'18.054"N	104°59'29.110"W	1.06	
19157.00	89.000	177.770	8161.03	11666.36	-10886.46	4195.40	39°59'17.116"N	104°59'29.075"W	3.26	
19253.00	88.150	177.570	8163.41	11757.53	-10982.35	4199.31	39°59'16.169"N	104°59'29.025"W	0.91	
19349.00	88.450	179.620	8166.26	11848.19	-11078.28	4201.66	39°59'15.221"N	104°59'28.995"W	2.16	BAKER DRILLED USING THIRD PARTY MWD-LAST SURVEY (337'FSL & 1637'FWL, SEC.03)
19495.00	88.450	179.620	8170.21	11985.21	-11224.22	4202.63	39°59'13.778"N	104°59'28.983"W	0.00	PROJECTION TO BIT (191'FSL & 1638'FWL, SEC.03)

REFERENCE WELLPATH IDENTIFICATION			
Operator	EXTRACTION OIL & GAS	Slot	SLOT#02 COYOTE TRAILS 34S-20-15N (1145'FSL & 2049'FEL, SEC.28)
Area	COLORADO	Well	COYOTE TRAILS 34S-20-15N
Field	WELD COUNTY (NAD83/TRUE NORTH)	Wellbore	COYOTE TRAILS 34S-20-15N AWP
Facility	SEC.28-T01N-R68W		

TARGETS								
Name	TVD [ft]	North [ft]	East [ft]	Grid East [US ft]	Grid North [US ft]	Latitude	Longitude	Shape
SEC.03-T01S-R68W	-1.00	0.00	18.21	3138269.92	1249778.85	40°01'04.703"N	105°00'22.741"W	polygon
SEC.04-T01S-R68W	-1.00	0.00	18.21	3138269.92	1249778.85	40°01'04.703"N	105°00'22.741"W	polygon
SEC.27-T01N-R68W	-1.00	0.00	18.21	3138269.92	1249778.85	40°01'04.703"N	105°00'22.741"W	point
SEC.28-T01N-R68W	-1.00	0.00	18.21	3138269.92	1249778.85	40°01'04.703"N	105°00'22.741"W	polygon
SEC.33-T01N-R68W	-1.00	0.00	18.21	3138269.92	1249778.85	40°01'04.703"N	105°00'22.741"W	polygon
SEC.34-T01N-R68W	-1.00	0.00	18.21	3138269.92	1249778.85	40°01'04.703"N	105°00'22.741"W	polygon
SEC.03-T01S-R68W (150'FSL SETBACKS)	7899.00	0.00	18.21	3138269.92	1249778.85	40°01'04.703"N	105°00'22.741"W	polygon
SEC.34-T01N-R68W (460'FNL SETBACKS)	7899.00	0.00	18.21	3138269.92	1249778.85	40°01'04.703"N	105°00'22.741"W	polygon
COYOTE TRAILS 34S-20-15N BHL (150'FSL & 1617'FWL, SEC.03)	8108.00	-11265.24	4181.93	3142496.13	1238537.38	39°59'13.373"N	104°59'29.249"W	point
COYOTE TRAILS 34S-20-15N LP (460'FNL & 2072'FWL, SEC.34)	8108.00	-1582.19	4122.88	3142383.18	1248219.59	40°00'49.064"N	104°59'29.987"W	point



Actual Wellpath Report

COYOTE TRAILS 34S-20-15N AWP

Page 10 of 11



REFERENCE WELLPATH IDENTIFICATION			
Operator	EXTRACTION OIL & GAS	Slot	SLOT#02 COYOTE TRAILS 34S-20-15N (1145'FSL & 2049'FEL, SEC.28)
Area	COLORADO	Well	COYOTE TRAILS 34S-20-15N
Field	WELD COUNTY (NAD83/TRUE NORTH)	Wellbore	COYOTE TRAILS 34S-20-15N AWP
Facility	SEC.28-T01N-R68W		

WELLPATH COMPOSITION - Ref Wellbore: COYOTE TRAILS 34S-20-15N AWP Ref Wellpath: COYOTE TRAILS 34S-20-15N AWP				
Start MD [ft]	End MD [ft]	Positional Uncertainty Model	Log Name/Comment	Wellbore
29.00	1555.00	ISCWSA MWD, Rev. 4 (Standard)	INTERGRITY DIRECTIONAL SURVEYS <224-1555>	COYOTE TRAILS 34S-20-15N AWP
1555.00	19349.00	ISCWSA MWD, Rev. 4 (Standard)	BAKER DRILLED USING THIRD PARTY MWD <1666-19349>	COYOTE TRAILS 34S-20-15N AWP
19349.00	19495.00	Blind Drilling (std)	Projection to bit	COYOTE TRAILS 34S-20-15N AWP

REFERENCE WELLPATH IDENTIFICATION			
Operator	EXTRACTION OIL & GAS	Slot	SLOT#02 COYOTE TRAILS 34S-20-15N (1145'FSL & 2049'FEL, SEC.28)
Area	COLORADO	Well	COYOTE TRAILS 34S-20-15N
Field	WELD COUNTY (NAD83/TRUE NORTH)	Wellbore	COYOTE TRAILS 34S-20-15N AWB
Facility	SEC.28-T01N-R68W		

WELLPATH COMMENTS				
MD [ft]	Inclination [°]	Azimuth [°]	TVD [ft]	Comment
1555.00	22.890	106.030	1511.66	TIED TO SURFACE SURVEYS
1666.00	24.900	107.940	1613.14	BAKER DRILLED USING THIRD PARTY MWD-FIRST SURVEY
9851.00	89.674	179.937	8108.01	CROSSED 460' SETBACK (460'FNL & 2051'FWL, SEC.34)
19349.00	88.450	179.620	8166.26	BAKER DRILLED USING THIRD PARTY MWD-LAST SURVEY (337'FSL & 1637'FWL, SEC.03)
19495.00	88.450	179.620	8170.21	PROJECTION TO BIT (191'FSL & 1638'FWL, SEC.03)