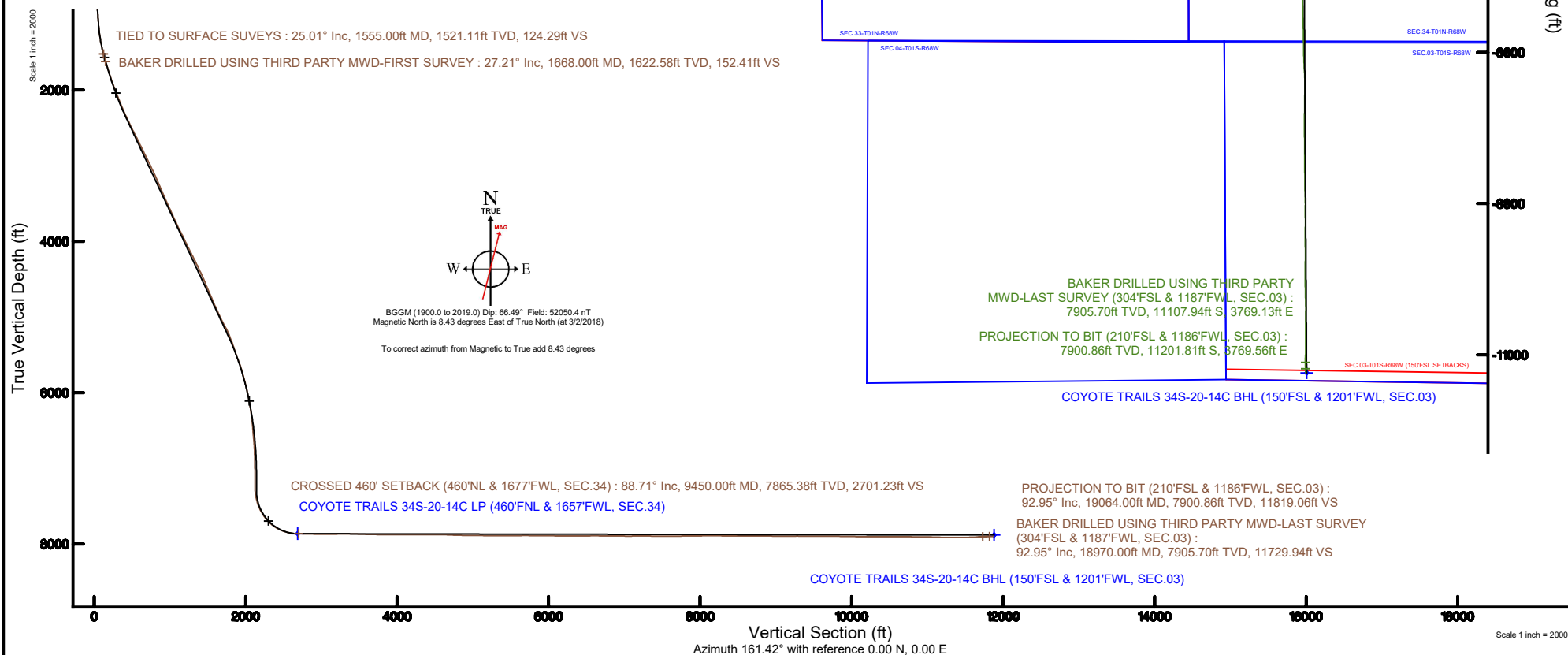


Location:	COLORADO	Slot:	SLOT#03 COYOTE TRAILS 34S-20-14C (1145FSL & 2067FEL, SEC.28)
Field:	WELD COUNTY (NAD83/TRUE NORTH)	Well:	COYOTE TRAILS 34S-20-14C
Facility:	SEC.28-T01N-R68W	Wellbore:	COYOTE TRAILS 34S-20-14C PWB
Plot reference wellpath is COYOTE TRAILS 34S-20-14C PWP (REV-A.0)		Grid System: NAD83 / Lambert Colorado SP, Northern Zone (501), US feet	
True vertical depths are referenced to PATTERSON 901 (29KB) (RKB)		* = Wellpath was transformed from a different geodetic datum	
Measured depths are referenced to PATTERSON 901 (29KB) (RKB)		North Reference: True north	
PATTERSON 901 (29KB) (RKB) to Mean Sea Level: 5301 feet		Scale: True distance	
Mean Sea Level to Mud line (At Slot: SLOT#03 COYOTE TRAILS 34S-20-14C (1145FSL & 2067FEL, SEC.28)): 0 feet		Depths are in feet	
Coordinates are in feet referenced to Slot		Created by: ingnjmr on 2018-03-20	
		Database: Denver	



REFERENCE WELLPATH IDENTIFICATION			
Operator	EXTRACTION OIL & GAS	Slot	SLOT#03 COYOTE TRAILS 34S-20-14C (1145'FSL & 2067'FEL, SEC.28)
Area	COLORADO	Well	COYOTE TRAILS 34S-20-14C
Field	WELD COUNTY (NAD83/TRUE NORTH)	Wellbore	COYOTE TRAILS 34S-20-14C AWB
Facility	SEC.28-T01N-R68W		

REPORT SETUP INFORMATION			
Projection System	NAD83 / Lambert Colorado SP, Northern Zone (501), US feet	Software System	WellArchitect® 5.0
North Reference	True	User	Ingmjmr
Scale	0.999965	Report Generated	3/20/2018 at 2:09:31 PM
Convergence at slot	0.32° East	Database/Source file	Denver/COYOTE_TRAILS_34S-20-14C_AWP.xml

WELLPATH LOCATION						
	Local coordinates		Grid coordinates		Geographic coordinates	
	North[ft]	East[ft]	Easting[US ft]	Northing[US ft]	Latitude	Longitude
Slot Location	0.00	-36.18	3138233.74	1249778.65	40°01'04.703"N	105°00'23.206"W
Facility Reference Pt			3138269.92	1249778.85	40°01'04.703"N	105°00'22.741"W
Field Reference Pt			3185481.27	1419166.81	40°28'55.560"N	104°49'59.556"W

WELLPATH DATUM			
Calculation method	Minimum curvature	PATTERSON 901 (29'KB) (RKB) to Facility Vertical Datum	5301.00ft
Horizontal Reference Pt	Slot	PATTERSON 901 (29'KB) (RKB) to Mean Sea Level	5301.00ft
Vertical Reference Pt	PATTERSON 901 (29'KB) (RKB)	PATTERSON 901 (29'KB) (RKB) to Mud Line at Slot (SLOT#03 COYOTE TRAILS 34S-20-14C (1145'FSL & 2067'FEL, SEC.28))	5301.00ft
MD Reference Pt	PATTERSON 901 (29'KB) (RKB)	Section Origin	N 0.00, E 0.00 ft
Field Vertical Reference	Mean Sea Level	Section Azimuth	161.40°

REFERENCE WELLPATH IDENTIFICATION			
Operator	EXTRACTION OIL & GAS	Slot	SLOT#03 COYOTE TRAILS 34S-20-14C (1145'FSL & 2067'FEL, SEC.28)
Area	COLORADO	Well	COYOTE TRAILS 34S-20-14C
Field	WELD COUNTY (NAD83/TRUE NORTH)	Wellbore	COYOTE TRAILS 34S-20-14C AWB
Facility	SEC.28-T01N-R68W		

WELLPATH DATA (185 stations)										
MD [ft]	Inclination [°]	Azimuth [°]	TVD [ft]	Vert Sect [ft]	North [ft]	East [ft]	Latitude	Longitude	DLS ["/100ft]	Comments
1555.00	25.010	105.100	1521.11	124.38	-46.66	251.33	40°01'04.242"N	105°00'19.976"W	1.96	TIED TO SURFACE SURVEYS
1668.00	27.210	106.560	1622.58	152.52	-60.25	299.16	40°01'04.108"N	105°00'19.361"W	2.03	BAKER DRILLED USING THIRD PARTY MWD-FIRST SURVEY
1763.00	27.980	106.690	1706.77	177.90	-72.84	341.33	40°01'03.983"N	105°00'18.819"W	0.81	
1858.00	28.310	109.650	1790.54	204.72	-86.82	383.89	40°01'03.845"N	105°00'18.272"W	1.51	
1952.00	30.140	107.980	1872.57	232.59	-101.60	427.34	40°01'03.699"N	105°00'17.713"W	2.13	
2048.00	31.190	108.740	1955.15	262.03	-117.02	473.80	40°01'03.546"N	105°00'17.116"W	1.17	
2143.00	33.190	107.900	2035.54	292.42	-132.92	521.85	40°01'03.389"N	105°00'16.499"W	2.16	
2239.00	34.890	106.780	2115.09	323.94	-148.92	573.14	40°01'03.231"N	105°00'15.839"W	1.89	
2334.00	35.770	104.920	2192.59	355.01	-163.92	625.99	40°01'03.083"N	105°00'15.160"W	1.46	
2430.00	37.970	106.140	2269.39	387.34	-179.35	681.47	40°01'02.930"N	105°00'14.447"W	2.42	
2525.00	40.120	106.540	2343.17	421.61	-196.19	738.89	40°01'02.764"N	105°00'13.709"W	2.28	
2621.00	38.650	106.280	2417.36	456.56	-213.40	797.33	40°01'02.594"N	105°00'12.958"W	1.54	
2717.00	39.510	107.790	2491.89	491.82	-231.14	855.18	40°01'02.419"N	105°00'12.214"W	1.34	
2812.00	41.230	108.150	2564.26	528.48	-250.13	913.71	40°01'02.231"N	105°00'11.462"W	1.83	
2908.00	39.930	107.890	2637.17	565.73	-269.45	973.09	40°01'02.040"N	105°00'10.699"W	1.37	
3003.00	40.100	108.370	2709.93	602.26	-288.45	1031.15	40°01'01.852"N	105°00'09.953"W	0.37	
3098.00	38.720	108.490	2783.33	638.58	-307.52	1088.36	40°01'01.664"N	105°00'09.217"W	1.45	
3194.00	39.850	107.640	2857.63	674.87	-326.36	1146.15	40°01'01.478"N	105°00'08.475"W	1.30	
3290.00	41.790	105.970	2930.28	711.21	-344.49	1206.22	40°01'01.298"N	105°00'07.703"W	2.32	
3385.00	39.980	104.880	3002.10	746.01	-361.03	1266.16	40°01'01.135"N	105°00'06.932"W	2.05	
3481.00	42.400	102.750	3074.34	779.86	-376.10	1327.54	40°01'00.986"N	105°00'06.143"W	2.91	
3576.00	41.220	101.940	3145.15	812.43	-389.65	1389.41	40°01'00.852"N	105°00'05.348"W	1.37	
3671.00	39.500	101.930	3217.54	843.69	-402.37	1449.60	40°01'00.726"N	105°00'04.575"W	1.81	
3767.00	40.390	102.730	3291.14	875.37	-415.53	1509.81	40°01'00.596"N	105°00'03.801"W	1.07	
3862.00	38.490	103.130	3364.50	906.92	-429.03	1568.63	40°01'00.463"N	105°00'03.045"W	2.02	
3957.00	40.350	103.230	3437.89	938.69	-442.79	1627.36	40°01'00.327"N	105°00'02.290"W	1.96	
4053.00	41.130	104.080	3510.62	972.13	-457.58	1688.24	40°01'00.180"N	105°00'01.507"W	1.00	
4148.00	39.420	104.060	3583.10	1005.28	-472.51	1747.81	40°01'00.033"N	105°00'00.742"W	1.80	
4244.00	40.700	104.550	3656.58	1038.85	-487.78	1807.68	40°00'59.882"N	104°59'59.972"W	1.37	
4339.00	38.480	105.260	3729.78	1072.25	-503.34	1866.18	40°00'59.728"N	104°59'59.220"W	2.38	

REFERENCE WELLPATH IDENTIFICATION

Operator	EXTRACTION OIL & GAS	Slot	SLOT#03 COYOTE TRAILS 34S-20-14C (1145'FSL & 2067'FEL, SEC.28)
Area	COLORADO	Well	COYOTE TRAILS 34S-20-14C
Field	WELD COUNTY (NAD83/TRUE NORTH)	Wellbore	COYOTE TRAILS 34S-20-14C AWP
Facility	SEC.28-T01N-R68W		

WELLPATH DATA (185 stations)

MD [ft]	Inclination [°]	Azimuth [°]	TVD [ft]	Vert Sect [ft]	North [ft]	East [ft]	Latitude	Longitude	DLS [°/100ft]	Comments
4434.00	40.220	106.240	3803.24	1106.25	-519.70	1924.15	40°00'59.566"N	104°59'58.475"W	1.94	
4530.00	40.930	108.750	3876.16	1143.03	-538.48	1983.69	40°00'59.381"N	104°59'57.710"W	1.85	
4625.00	37.940	109.090	3949.53	1179.78	-558.04	2040.77	40°00'59.187"N	104°59'56.977"W	3.16	
4720.00	38.320	108.220	4024.26	1215.28	-576.80	2096.34	40°00'59.002"N	104°59'56.262"W	0.69	
4816.00	41.720	106.860	4097.76	1251.66	-595.38	2155.20	40°00'58.818"N	104°59'55.506"W	3.66	
4911.00	41.160	106.360	4168.98	1287.91	-613.35	2215.45	40°00'58.641"N	104°59'54.731"W	0.68	
5006.00	41.210	106.160	4240.48	1323.67	-630.87	2275.51	40°00'58.468"N	104°59'53.960"W	0.15	
5102.00	41.750	105.890	4312.40	1359.79	-648.42	2336.62	40°00'58.294"N	104°59'53.174"W	0.59	
5197.00	40.350	103.760	4384.04	1394.17	-664.39	2396.92	40°00'58.136"N	104°59'52.399"W	2.08	
5293.00	41.880	101.450	4456.37	1426.85	-678.15	2458.52	40°00'58.000"N	104°59'51.608"W	2.25	
5388.00	41.410	100.750	4527.36	1458.13	-690.30	2520.46	40°00'57.880"N	104°59'50.811"W	0.70	
5484.00	40.080	102.150	4600.09	1489.49	-702.73	2581.87	40°00'57.757"N	104°59'50.022"W	1.68	
5579.00	40.740	101.670	4672.43	1520.75	-715.44	2642.13	40°00'57.631"N	104°59'49.248"W	0.77	
5674.00	38.650	102.880	4745.52	1551.88	-728.32	2701.42	40°00'57.504"N	104°59'48.486"W	2.35	
5770.00	37.730	106.370	4820.99	1584.37	-743.29	2758.83	40°00'57.356"N	104°59'47.748"W	2.44	
5865.00	36.770	107.400	4896.61	1617.74	-759.98	2813.86	40°00'57.191"N	104°59'47.041"W	1.20	
5961.00	39.440	105.220	4972.14	1651.61	-776.58	2870.71	40°00'57.027"N	104°59'46.310"W	3.11	
6057.00	42.400	105.160	5044.67	1686.57	-793.06	2931.39	40°00'56.864"N	104°59'45.530"W	3.08	
6152.00	45.110	105.160	5113.29	1723.08	-810.24	2994.80	40°00'56.694"N	104°59'44.715"W	2.85	
6247.00	42.680	102.860	5181.74	1758.59	-826.21	3058.68	40°00'56.536"N	104°59'43.894"W	3.06	
6343.00	39.640	99.230	5254.02	1789.88	-838.37	3120.66	40°00'56.416"N	104°59'43.098"W	4.03	
6438.00	36.770	102.710	5328.67	1818.81	-849.49	3178.32	40°00'56.306"N	104°59'42.356"W	3.78	
6534.00	34.230	98.970	5406.83	1846.25	-860.02	3233.04	40°00'56.202"N	104°59'41.653"W	3.48	
6630.00	33.130	102.790	5486.73	1872.41	-870.04	3285.30	40°00'56.103"N	104°59'40.982"W	2.49	
6725.00	32.760	110.240	5566.48	1902.07	-884.69	3334.75	40°00'55.958"N	104°59'40.346"W	4.28	
6820.00	29.220	109.430	5647.91	1932.48	-901.30	3380.75	40°00'55.794"N	104°59'39.755"W	3.75	
6916.00	26.070	107.060	5732.94	1959.22	-915.28	3423.03	40°00'55.656"N	104°59'39.211"W	3.47	
7012.00	23.800	106.830	5819.99	1982.75	-927.08	3461.74	40°00'55.539"N	104°59'38.714"W	2.37	
7107.00	23.520	106.210	5907.00	2004.68	-937.92	3498.29	40°00'55.432"N	104°59'38.244"W	0.39	
7203.00	21.070	105.890	5995.82	2025.39	-948.00	3533.28	40°00'55.332"N	104°59'37.794"W	2.56	

REFERENCE WELLPATH IDENTIFICATION			
Operator	EXTRACTION OIL & GAS	Slot	SLOT#03 COYOTE TRAILS 34S-20-14C (1145'FSL & 2067'FEL, SEC.28)
Area	COLORADO	Well	COYOTE TRAILS 34S-20-14C
Field	WELD COUNTY (NAD83/TRUE NORTH)	Wellbore	COYOTE TRAILS 34S-20-14C AWB
Facility	SEC.28-T01N-R68W		

WELLPATH DATA (185 stations) † = interpolated/extrapolated station										
MD [ft]	Inclination [°]	Azimuth [°]	TVD [ft]	Vert Sect [ft]	North [ft]	East [ft]	Latitude	Longitude	DLS [°/100ft]	Comments
7298.00	17.860	104.580	6085.38	2043.04	-956.34	3563.81	40°00'55.250"N	104°59'37.402"W	3.41	
7394.00	17.570	105.890	6176.83	2059.30	-964.02	3592.00	40°00'55.174"N	104°59'37.040"W	0.51	
7489.00	14.550	105.100	6268.11	2074.04	-971.05	3617.32	40°00'55.104"N	104°59'36.714"W	3.19	
7583.00	13.990	97.720	6359.22	2085.63	-975.65	3639.98	40°00'55.059"N	104°59'36.423"W	2.02	
7680.00	10.980	95.630	6453.91	2094.62	-978.14	3660.79	40°00'55.034"N	104°59'36.156"W	3.14	
7776.00	10.820	100.570	6548.18	2102.77	-980.69	3678.75	40°00'55.009"N	104°59'35.925"W	0.99	
7871.00	9.250	99.450	6641.73	2110.70	-983.58	3695.05	40°00'54.980"N	104°59'35.715"W	1.67	
7967.00	8.000	94.940	6736.64	2117.00	-985.42	3709.32	40°00'54.962"N	104°59'35.532"W	1.48	
8062.00	4.600	94.020	6831.05	2121.11	-986.25	3719.71	40°00'54.954"N	104°59'35.399"W	3.58	
8182.00	1.670	94.860	6950.86	2123.65	-986.74	3726.25	40°00'54.949"N	104°59'35.314"W	2.44	
8277.00	1.500	92.330	7045.82	2124.65	-986.91	3728.87	40°00'54.947"N	104°59'35.281"W	0.19	
8373.00	1.510	78.260	7141.79	2125.25	-986.70	3731.36	40°00'54.949"N	104°59'35.249"W	0.38	
8468.00	1.570	61.670	7236.76	2125.18	-985.83	3733.74	40°00'54.958"N	104°59'35.218"W	0.47	
8564.00	6.410	156.990	7332.55	2130.30	-990.14	3736.99	40°00'54.915"N	104°59'35.176"W	7.02	
8659.00	16.120	173.060	7425.63	2148.56	-1008.16	3740.67	40°00'54.737"N	104°59'35.129"W	10.65	
8755.00	22.570	173.870	7516.16	2179.63	-1039.74	3744.25	40°00'54.425"N	104°59'35.083"W	6.72	
8850.00	32.380	178.500	7600.35	2221.85	-1083.41	3746.87	40°00'53.994"N	104°59'35.050"W	10.56	
8946.00	40.990	175.740	7677.27	2277.03	-1140.62	3749.89	40°00'53.428"N	104°59'35.011"W	9.13	
9041.00	52.010	177.660	7742.56	2343.36	-1209.31	3753.74	40°00'52.749"N	104°59'34.961"W	11.69	
9137.00	62.090	177.140	7794.71	2420.71	-1289.68	3757.41	40°00'51.955"N	104°59'34.914"W	10.51	
9232.00	71.490	181.770	7832.13	2503.56	-1376.86	3758.12	40°00'51.094"N	104°59'34.906"W	10.86	
9327.00	80.070	183.390	7855.44	2589.34	-1468.76	3753.95	40°00'50.185"N	104°59'34.959"W	9.18	
9423.00	88.750	184.230	7864.79	2677.58	-1564.00	3747.60	40°00'49.244"N	104°59'35.041"W	9.08	
9450.00†	88.707	183.906	7865.38	2702.49	-1590.93	3745.69	40°00'48.978"N	104°59'35.066"W	1.21	CROSSED 460' SETBACK (460'NL & 1677'FWL, SEC.34)
9518.00	88.600	183.090	7866.98	2765.47	-1658.78	3741.54	40°00'48.308"N	104°59'35.119"W	1.21	
9614.00	88.960	182.790	7869.03	2854.75	-1754.63	3736.62	40°00'47.360"N	104°59'35.183"W	0.49	
9710.00	89.090	182.440	7870.66	2944.23	-1850.52	3732.24	40°00'46.413"N	104°59'35.239"W	0.39	
9805.00	90.410	182.730	7871.07	3032.81	-1945.42	3727.95	40°00'45.475"N	104°59'35.294"W	1.42	
9901.00	90.280	180.350	7870.50	3122.93	-2041.37	3725.37	40°00'44.527"N	104°59'35.328"W	2.48	
9996.00	90.810	179.420	7869.59	3213.03	-2136.37	3725.56	40°00'43.588"N	104°59'35.325"W	1.13	

REFERENCE WELLPATH IDENTIFICATION			
Operator	EXTRACTION OIL & GAS	Slot	SLOT#03 COYOTE TRAILS 34S-20-14C (1145'FSL & 2067'FEL, SEC.28)
Area	COLORADO	Well	COYOTE TRAILS 34S-20-14C
Field	WELD COUNTY (NAD83/TRUE NORTH)	Wellbore	COYOTE TRAILS 34S-20-14C AWP
Facility	SEC.28-T01N-R68W		

WELLPATH DATA (185 stations)										
MD [ft]	Inclination [°]	Azimuth [°]	TVD [ft]	Vert Sect [ft]	North [ft]	East [ft]	Latitude	Longitude	DLS [°/100ft]	Comments
10092.00	91.240	179.260	7867.88	3304.34	-2232.35	3726.67	40°00'42.640"N	104°59'35.311"W	0.48	
10187.00	88.870	179.510	7867.78	3394.70	-2327.33	3727.69	40°00'41.701"N	104°59'35.298"W	2.51	
10283.00	88.450	180.000	7870.03	3485.79	-2423.31	3728.10	40°00'40.752"N	104°59'35.293"W	0.67	
10378.00	87.990	179.700	7872.98	3575.86	-2518.26	3728.35	40°00'39.814"N	104°59'35.290"W	0.58	
10474.00	89.020	178.120	7875.48	3667.38	-2614.21	3730.17	40°00'38.866"N	104°59'35.267"W	1.96	
10570.00	89.290	179.190	7876.90	3759.05	-2710.17	3732.43	40°00'37.918"N	104°59'35.238"W	1.15	
10665.00	89.820	179.850	7877.64	3849.33	-2805.16	3733.22	40°00'36.979"N	104°59'35.228"W	0.89	
10761.00	89.480	181.360	7878.22	3939.99	-2901.15	3732.21	40°00'36.030"N	104°59'35.241"W	1.61	
10856.00	90.200	180.820	7878.49	4029.43	-2996.13	3730.40	40°00'35.092"N	104°59'35.265"W	0.95	
10951.00	89.620	178.760	7878.64	4119.57	-3091.13	3730.75	40°00'34.153"N	104°59'35.261"W	2.25	
11047.00	91.210	178.140	7877.94	4211.35	-3187.08	3733.35	40°00'33.205"N	104°59'35.227"W	1.78	
11142.00	89.780	179.530	7877.12	4301.98	-3282.06	3735.28	40°00'32.266"N	104°59'35.203"W	2.10	
11238.00	89.470	178.330	7877.75	4393.52	-3378.04	3737.07	40°00'31.317"N	104°59'35.180"W	1.29	
11334.00	90.170	177.170	7878.05	4485.63	-3473.96	3740.84	40°00'30.370"N	104°59'35.132"W	1.41	
11429.00	89.830	179.500	7878.05	4576.51	-3568.91	3743.60	40°00'29.431"N	104°59'35.096"W	2.48	
11524.00	87.560	179.460	7880.22	4666.79	-3663.88	3744.46	40°00'28.493"N	104°59'35.086"W	2.39	
11620.00	88.410	178.480	7883.59	4758.25	-3759.80	3746.19	40°00'27.545"N	104°59'35.064"W	1.35	
11715.00	88.390	180.270	7886.24	4848.58	-3854.75	3747.22	40°00'26.606"N	104°59'35.050"W	1.88	
11811.00	89.240	179.650	7888.23	4939.56	-3950.73	3747.29	40°00'25.658"N	104°59'35.050"W	1.10	
11906.00	90.090	179.760	7888.79	5029.75	-4045.73	3747.78	40°00'24.719"N	104°59'35.044"W	0.90	
12002.00	89.050	181.510	7889.51	5120.39	-4141.71	3746.71	40°00'23.771"N	104°59'35.057"W	2.12	
12097.00	89.400	181.470	7890.79	5209.60	-4236.67	3744.24	40°00'22.832"N	104°59'35.089"W	0.37	
12193.00	89.970	180.660	7891.32	5300.00	-4332.65	3742.46	40°00'21.884"N	104°59'35.113"W	1.03	
12288.00	90.690	179.460	7890.77	5390.00	-4427.65	3742.36	40°00'20.945"N	104°59'35.114"W	1.47	
12384.00	89.990	180.390	7890.20	5481.03	-4523.65	3742.49	40°00'19.996"N	104°59'35.113"W	1.21	
12479.00	90.100	180.670	7890.13	5570.78	-4618.64	3741.61	40°00'19.057"N	104°59'35.124"W	0.32	
12575.00	90.770	181.920	7889.40	5661.05	-4714.61	3739.44	40°00'18.109"N	104°59'35.152"W	1.48	
12670.00	88.400	182.030	7890.09	5749.98	-4809.55	3736.16	40°00'17.171"N	104°59'35.194"W	2.50	
12766.00	89.690	181.330	7891.69	5840.01	-4905.49	3733.35	40°00'16.223"N	104°59'35.231"W	1.53	
12861.00	90.740	180.320	7891.33	5929.60	-5000.48	3731.98	40°00'15.284"N	104°59'35.248"W	1.53	

REFERENCE WELLPATH IDENTIFICATION			
Operator	EXTRACTION OIL & GAS	Slot	SLOT#03 COYOTE TRAILS 34S-20-14C (1145'FSL & 2067'FEL, SEC.28)
Area	COLORADO	Well	COYOTE TRAILS 34S-20-14C
Field	WELD COUNTY (NAD83/TRUE NORTH)	Wellbore	COYOTE TRAILS 34S-20-14C AWB
Facility	SEC.28-T01N-R68W		

WELLPATH DATA (185 stations)										
MD [ft]	Inclination [°]	Azimuth [°]	TVD [ft]	Vert Sect [ft]	North [ft]	East [ft]	Latitude	Longitude	DLS [°/100ft]	Comments
12957.00	88.740	181.220	7891.77	6020.16	-5096.46	3730.69	40°00'14.335"N	104°59'35.265"W	2.28	
13052.00	88.430	180.970	7894.11	6109.58	-5191.42	3728.88	40°00'13.397"N	104°59'35.289"W	0.42	
13148.00	89.290	180.550	7896.02	6200.13	-5287.39	3727.61	40°00'12.449"N	104°59'35.305"W	1.00	
13243.00	90.550	180.560	7896.15	6289.87	-5382.38	3726.68	40°00'11.510"N	104°59'35.317"W	1.33	
13339.00	91.500	180.370	7894.44	6380.59	-5478.36	3725.91	40°00'10.561"N	104°59'35.327"W	1.01	
13434.00	89.760	180.340	7893.39	6470.43	-5573.35	3725.32	40°00'09.623"N	104°59'35.335"W	1.83	
13530.00	90.860	179.810	7892.87	6561.37	-5669.35	3725.19	40°00'08.674"N	104°59'35.337"W	1.27	
13625.00	89.090	179.070	7892.91	6651.70	-5764.34	3726.12	40°00'07.735"N	104°59'35.325"W	2.02	
13721.00	89.270	178.930	7894.29	6743.20	-5860.31	3727.80	40°00'06.787"N	104°59'35.304"W	0.24	
13816.00	89.590	178.980	7895.23	6833.77	-5955.29	3729.53	40°00'05.848"N	104°59'35.282"W	0.34	
13912.00	89.660	178.870	7895.86	6925.31	-6051.27	3731.33	40°00'04.900"N	104°59'35.259"W	0.14	
14007.00	89.720	178.370	7896.38	7016.05	-6146.24	3733.62	40°00'03.961"N	104°59'35.230"W	0.53	
14102.00	90.310	178.770	7896.35	7106.82	-6241.21	3735.99	40°00'03.023"N	104°59'35.199"W	0.75	
14198.00	91.290	178.660	7895.01	7198.46	-6337.18	3738.14	40°00'02.074"N	104°59'35.172"W	1.03	
14293.00	88.710	179.440	7895.01	7288.98	-6432.16	3739.72	40°00'01.136"N	104°59'35.152"W	2.84	
14389.00	89.260	179.290	7896.71	7380.29	-6528.14	3740.78	40°00'00.187"N	104°59'35.138"W	0.59	
14484.00	89.720	178.550	7897.56	7470.88	-6623.11	3742.57	39°59'59.249"N	104°59'35.116"W	0.92	
14580.00	90.110	177.640	7897.70	7562.83	-6719.06	3745.76	39°59'58.300"N	104°59'35.075"W	1.03	
14675.00	90.500	177.200	7897.19	7654.14	-6813.96	3750.04	39°59'57.363"N	104°59'35.020"W	0.62	
14771.00	90.370	176.550	7896.46	7746.65	-6909.82	3755.27	39°59'56.415"N	104°59'34.953"W	0.69	
14867.00	91.170	178.690	7895.17	7838.82	-7005.72	3759.26	39°59'55.468"N	104°59'34.902"W	2.38	
14962.00	90.400	180.720	7893.87	7929.00	-7100.70	3759.75	39°59'54.529"N	104°59'34.896"W	2.29	
15057.00	90.600	180.760	7893.04	8018.64	-7195.69	3758.52	39°59'53.590"N	104°59'34.912"W	0.21	
15153.00	91.070	180.480	7891.64	8109.28	-7291.67	3757.48	39°59'52.642"N	104°59'34.925"W	0.57	
15248.00	89.030	181.120	7891.56	8198.88	-7386.66	3756.15	39°59'51.703"N	104°59'34.942"W	2.25	
15344.00	89.020	180.740	7893.20	8289.34	-7482.63	3754.60	39°59'50.755"N	104°59'34.963"W	0.40	
15439.00	89.540	180.650	7894.39	8379.00	-7577.62	3753.44	39°59'49.816"N	104°59'34.978"W	0.56	
15534.00	89.990	180.120	7894.78	8468.83	-7672.61	3752.80	39°59'48.877"N	104°59'34.986"W	0.73	
15630.00	90.170	179.150	7894.64	8560.01	-7768.61	3753.42	39°59'47.928"N	104°59'34.978"W	1.03	
15725.00	90.750	178.740	7893.88	8650.59	-7863.59	3755.17	39°59'46.990"N	104°59'34.956"W	0.75	

REFERENCE WELLPATH IDENTIFICATION			
Operator	EXTRACTION OIL & GAS	Slot	SLOT#03 COYOTE TRAILS 34S-20-14C (1145'FSL & 2067'FEL, SEC.28)
Area	COLORADO	Well	COYOTE TRAILS 34S-20-14C
Field	WELD COUNTY (NAD83/TRUE NORTH)	Wellbore	COYOTE TRAILS 34S-20-14C AWB
Facility	SEC.28-T01N-R68W		

WELLPATH DATA (185 stations)										
MD [ft]	Inclination [°]	Azimuth [°]	TVD [ft]	Vert Sect [ft]	North [ft]	East [ft]	Latitude	Longitude	DLS [°/100ft]	Comments
15821.00	89.040	180.520	7894.06	8741.76	-7959.58	3755.79	39°59'46.041"N	104°59'34.948"W	2.57	
15916.00	90.180	179.880	7894.70	8831.69	-8054.58	3755.45	39°59'45.102"N	104°59'34.953"W	1.38	
16011.00	88.600	179.990	7895.72	8921.75	-8149.57	3755.56	39°59'44.164"N	104°59'34.952"W	1.67	
16107.00	88.930	179.240	7897.78	9012.92	-8245.54	3756.21	39°59'43.215"N	104°59'34.943"W	0.85	
16202.00	90.250	178.840	7898.46	9103.45	-8340.53	3757.80	39°59'42.277"N	104°59'34.923"W	1.45	
16298.00	91.210	178.980	7897.24	9195.00	-8436.50	3759.62	39°59'41.328"N	104°59'34.900"W	1.01	
16393.00	89.870	179.540	7896.35	9285.41	-8531.48	3760.85	39°59'40.389"N	104°59'34.884"W	1.53	
16489.00	89.630	179.210	7896.77	9376.73	-8627.48	3761.90	39°59'39.441"N	104°59'34.871"W	0.43	
16584.00	90.180	178.160	7896.92	9467.43	-8722.45	3764.08	39°59'38.502"N	104°59'34.843"W	1.25	
16680.00	89.300	180.090	7897.36	9558.87	-8818.43	3765.54	39°59'37.554"N	104°59'34.825"W	2.21	
16775.00	89.600	180.310	7898.27	9648.80	-8913.43	3765.21	39°59'36.615"N	104°59'34.829"W	0.39	
16871.00	89.970	179.280	7898.63	9739.89	-9009.42	3765.56	39°59'35.666"N	104°59'34.825"W	1.14	
16966.00	88.980	180.480	7899.50	9829.99	-9104.42	3765.76	39°59'34.728"N	104°59'34.822"W	1.64	
17062.00	89.030	180.330	7901.17	9920.74	-9200.40	3765.08	39°59'33.779"N	104°59'34.831"W	0.16	
17157.00	89.220	180.280	7902.62	10010.61	-9295.39	3764.57	39°59'32.840"N	104°59'34.838"W	0.21	
17252.00	89.580	179.350	7903.61	10100.74	-9390.38	3764.88	39°59'31.902"N	104°59'34.834"W	1.05	
17347.00	89.830	178.940	7904.10	10191.22	-9485.37	3766.30	39°59'30.963"N	104°59'34.816"W	0.51	
17443.00	89.310	181.020	7904.82	10282.21	-9581.36	3766.33	39°59'30.014"N	104°59'34.816"W	2.23	
17538.00	89.780	180.590	7905.58	10371.81	-9676.35	3764.99	39°59'29.076"N	104°59'34.833"W	0.67	
17634.00	90.290	180.360	7905.52	10462.54	-9772.34	3764.20	39°59'28.127"N	104°59'34.844"W	0.58	
17729.00	90.940	179.210	7904.50	10552.68	-9867.34	3764.55	39°59'27.188"N	104°59'34.839"W	1.39	
17825.00	89.230	179.990	7904.36	10643.87	-9963.33	3765.22	39°59'26.240"N	104°59'34.831"W	1.96	
17920.00	89.170	178.990	7905.68	10734.17	-10058.32	3766.07	39°59'25.301"N	104°59'34.820"W	1.05	
18016.00	89.670	178.260	7906.66	10825.86	-10154.28	3768.37	39°59'24.352"N	104°59'34.791"W	0.92	
18111.00	90.060	177.840	7906.88	10916.88	-10249.23	3771.61	39°59'23.414"N	104°59'34.750"W	0.60	
18207.00	88.250	180.630	7908.30	11008.24	-10345.19	3772.89	39°59'22.466"N	104°59'34.733"W	3.46	
18302.00	88.390	180.510	7911.08	11097.93	-10440.15	3771.94	39°59'21.527"N	104°59'34.746"W	0.19	
18398.00	89.080	180.760	7913.20	11188.55	-10536.12	3770.88	39°59'20.579"N	104°59'34.759"W	0.76	
18493.00	89.430	180.150	7914.43	11278.34	-10631.11	3770.13	39°59'19.640"N	104°59'34.769"W	0.74	
18588.00	89.830	180.130	7915.05	11368.30	-10726.10	3769.89	39°59'18.702"N	104°59'34.772"W	0.42	

REFERENCE WELLPATH IDENTIFICATION

Operator	EXTRACTION OIL & GAS	Slot	SLOT#03 COYOTE TRAILS 34S-20-14C (1145'FSL & 2067'FEL, SEC.28)
Area	COLORADO	Well	COYOTE TRAILS 34S-20-14C
Field	WELD COUNTY (NAD83/TRUE NORTH)	Wellbore	COYOTE TRAILS 34S-20-14C AWB
Facility	SEC.28-T01N-R68W		

WELLPATH DATA (185 stations)

MD [ft]	Inclination [°]	Azimuth [°]	TVD [ft]	Vert Sect [ft]	North [ft]	East [ft]	Latitude	Longitude	DLS [°/100ft]	Comments
18683.00	90.520	179.940	7914.76	11458.32	-10821.10	3769.84	39°59'17.763"N	104°59'34.773"W	0.75	
18779.00	91.440	180.280	7913.12	11549.23	-10917.09	3769.65	39°59'16.814"N	104°59'34.776"W	1.02	
18875.00	92.260	180.300	7910.02	11640.02	-11013.04	3769.17	39°59'15.866"N	104°59'34.782"W	0.85	
18970.00	92.950	179.740	7905.70	11729.95	-11107.94	3769.13	39°59'14.928"N	104°59'34.783"W	0.94	BAKER DRILLED USING THIRD PARTY MWD-LAST SURVEY (304'FSL & 1187'FWL, SEC.03)
19064.00	92.950	179.740	7900.86	11819.06	-11201.81	3769.56	39°59'14.000"N	104°59'34.778"W	0.00	PROJECTION TO BIT (210'FSL & 1186'FWL, SEC.03)

REFERENCE WELLPATH IDENTIFICATION			
Operator	EXTRACTION OIL & GAS	Slot	SLOT#03 COYOTE TRAILS 34S-20-14C (1145'FSL & 2067'FEL, SEC.28)
Area	COLORADO	Well	COYOTE TRAILS 34S-20-14C
Field	WELD COUNTY (NAD83/TRUE NORTH)	Wellbore	COYOTE TRAILS 34S-20-14C AWP
Facility	SEC.28-T01N-R68W		

TARGETS								
Name	TVD [ft]	North [ft]	East [ft]	Grid East [US ft]	Grid North [US ft]	Latitude	Longitude	Shape
SEC.03-T01S-R68W	-2.00	0.00	36.18	3138269.92	1249778.85	40°01'04.703"N	105°00'22.741"W	polygon
SEC.04-T01S-R68W	-2.00	0.00	36.18	3138269.92	1249778.85	40°01'04.703"N	105°00'22.741"W	polygon
SEC.27-T01N-R68W	-2.00	0.00	36.18	3138269.92	1249778.85	40°01'04.703"N	105°00'22.741"W	point
SEC.28-T01N-R68W	-2.00	0.00	36.18	3138269.92	1249778.85	40°01'04.703"N	105°00'22.741"W	polygon
SEC.33-T01N-R68W	-2.00	0.00	36.18	3138269.92	1249778.85	40°01'04.703"N	105°00'22.741"W	polygon
SEC.34-T01N-R68W	-2.00	0.00	36.18	3138269.92	1249778.85	40°01'04.703"N	105°00'22.741"W	polygon
COYOTE TRAILS 34S-20-14C LP (460'FNL & 1657'FWL, SEC.34)	7865.00	-1582.25	3726.29	3141968.64	1248217.22	40°00'49.064"N	104°59'35.315"W	point
COYOTE TRAILS 34S-20-14C BHL (150'FSL & 1201'FWL, SEC.03)	7883.00	-11262.06	3784.64	3142080.87	1238538.24	39°59'13.405"N	104°59'34.584"W	point
SEC.03-T01S-R68W (150'FSL SETBACKS)	7898.00	0.00	36.18	3138269.92	1249778.85	40°01'04.703"N	105°00'22.741"W	polygon
SEC.34-T01N-R68W (460'FNL SETBACKS)	7898.00	0.00	36.18	3138269.92	1249778.85	40°01'04.703"N	105°00'22.741"W	polygon

REFERENCE WELLPATH IDENTIFICATION			
Operator	EXTRACTION OIL & GAS	Slot	SLOT#03 COYOTE TRAILS 34S-20-14C (1145'FSL & 2067'FEL, SEC.28)
Area	COLORADO	Well	COYOTE TRAILS 34S-20-14C
Field	WELD COUNTY (NAD83/TRUE NORTH)	Wellbore	COYOTE TRAILS 34S-20-14C AWB
Facility	SEC.28-T01N-R68W		

WELLPATH COMPOSITION - Ref Wellbore: COYOTE TRAILS 34S-20-14C AWB Ref Wellpath: COYOTE TRAILS 34S-20-14C AWP				
Start MD [ft]	End MD [ft]	Positional Uncertainty Model	Log Name/Comment	Wellbore
29.00	1555.00	ISCWSA MWD, Rev. 4 (Standard)	INTERGRITY DIRECTIONAL SURVEYS <224-1555>	COYOTE TRAILS 34S-20-14C AWB
1555.00	18970.00	ISCWSA MWD, Rev. 4 (Standard)	BAKER DRILLED USING THIRD PARTY MWD <1668-18970>	COYOTE TRAILS 34S-20-14C AWB
18970.00	19064.00	Blind Drilling (std)	Projection to bit	COYOTE TRAILS 34S-20-14C AWB

REFERENCE WELLPATH IDENTIFICATION			
Operator	EXTRACTION OIL & GAS	Slot	SLOT#03 COYOTE TRAILS 34S-20-14C (1145'FSL & 2067'FEL, SEC.28)
Area	COLORADO	Well	COYOTE TRAILS 34S-20-14C
Field	WELD COUNTY (NAD83/TRUE NORTH)	Wellbore	COYOTE TRAILS 34S-20-14C AWP
Facility	SEC.28-T01N-R68W		

WELLPATH COMMENTS				
MD [ft]	Inclination [°]	Azimuth [°]	TVD [ft]	Comment
1555.00	25.010	105.100	1521.11	TIED TO SURFACE SUVEYS
1668.00	27.210	106.560	1622.58	BAKER DRILLED USING THIRD PARTY MWD-FIRST SURVEY
9450.00	88.707	183.906	7865.38	CROSSED 460' SETBACK (460'NL & 1677'FWL, SEC.34)
18970.00	92.950	179.740	7905.70	BAKER DRILLED USING THIRD PARTY MWD-LAST SURVEY (304'FSL & 1187'FWL, SEC.03)
19064.00	92.950	179.740	7900.86	PROJECTION TO BIT (210'FSL & 1186'FWL, SEC.03)