



EXTRACTION OIL & GAS
Project: WELD COUNTY, COLORADO (NAD 83)
Site: Sec 28-T1N-R68W 29' KB TRUE
Well: Coyote Trails 34S-20-11C
Wellbore: Wellbore #1
Plan: Plan #3 (Coyote Trails 34S-20-11C/Wellbore #1)



INTEGRITY
DIRECTIONAL

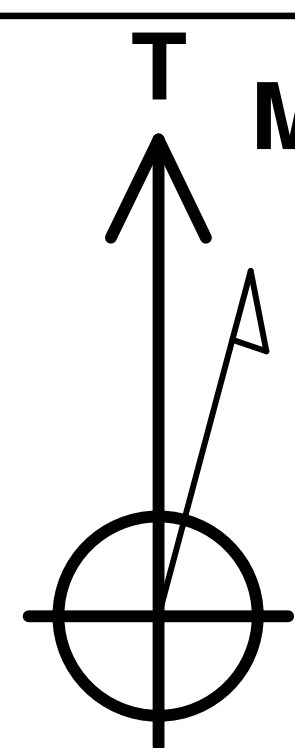
WELL DETAILS: Coyote Trails 34S-20-11C

Ground Elevation:: 5270.0
RKB Elevation: KB=29 @ 5299.0usft
Rig Name:

	0.0	Northing	Easting	Latitude	Longitude
		1249743.73	3138179.85	40° 1' 4.361 N	105° 0' 23.901 W

Planned Section Details

Sec	MD	Inc	Azi	TVD	+N/-S	+E/-W	Dleg	TFace	VSect
1	1555.0	17.72	111.87	1537.0	-50.7	159.4	0.00	0.00	87.0
2	1620.0	17.72	111.87	1598.9	-58.1	177.8	0.00	0.00	98.5
3	2135.0	28.00	110.18	2072.8	-129.2	364.5	2.00	-4.44	211.8
4	6655.0	28.00	110.18	6063.7	-861.2	2356.2	0.00	0.00	1394.5
5	8055.0	0.00	0.00	7408.7	-976.9	2670.9	2.00	-180.00	1581.4
6	8218.8	0.00	0.00	7572.5	-976.9	2670.9	0.00	0.00	1581.4
7	9118.8	90.00	179.65	8145.4	-1549.9	2674.4	10.00	179.65	2138.9
8	18787.9	90.00	179.65	8145.0	-11218.8	2733.4	0.00	0.00	11547.0

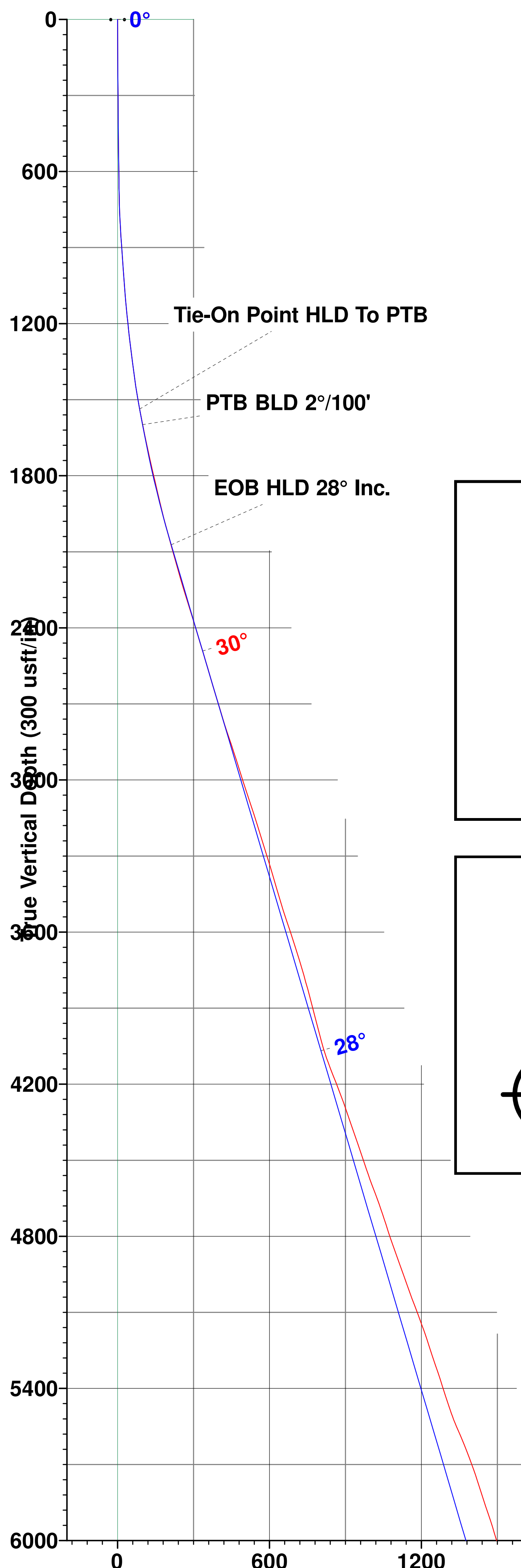


Mazimuths to True North
Magnetic North: 8.42°
Magnetic Field
Strength: 52089.3snT
Dip Angle: 66.38°
Date: 12/29/2017
Model: HDGM

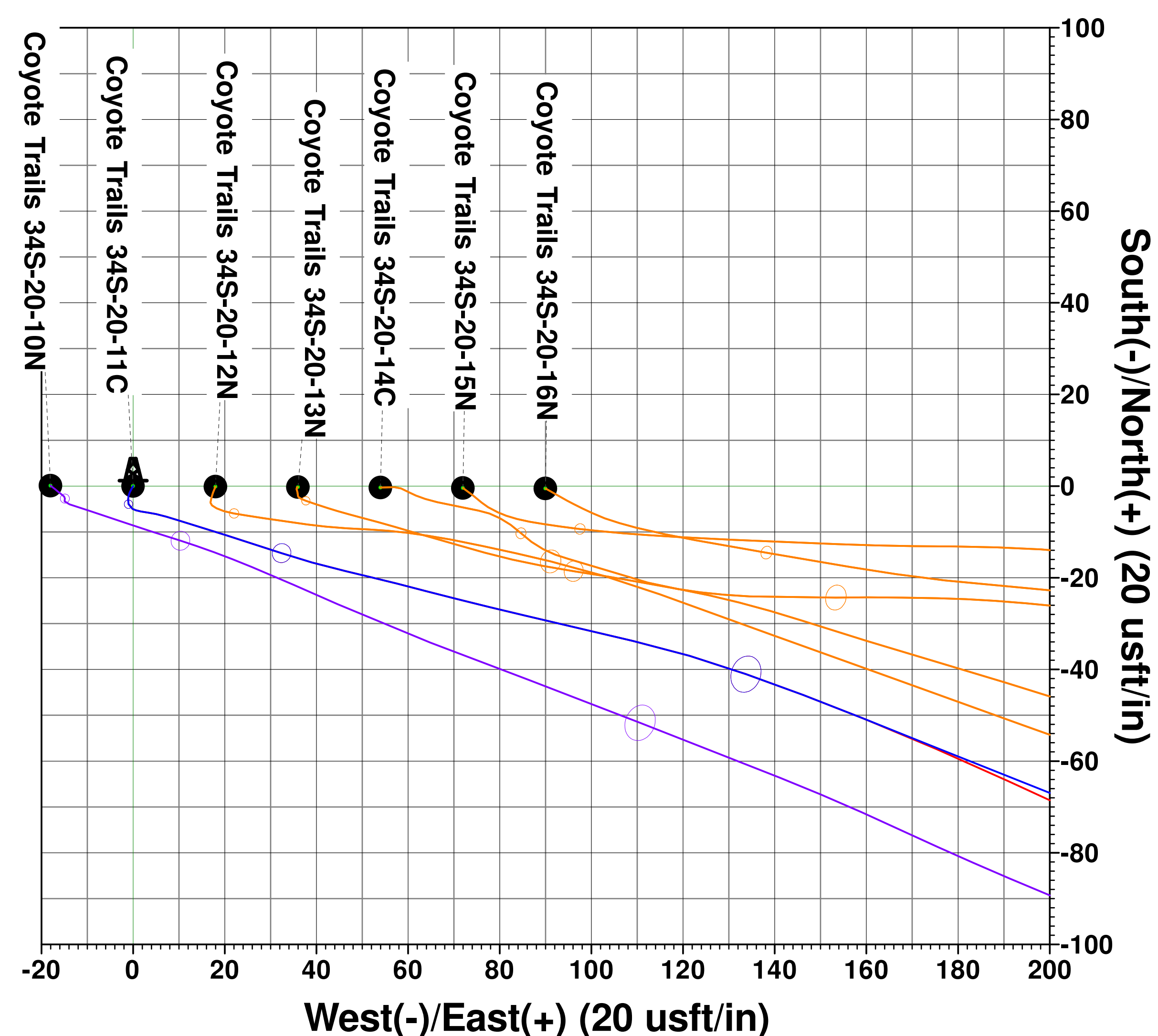
PROJECT DETAILS: WELD COUNTY, COLORADO (NAD 83)
Geodetic System: US State Plane 1983
Datum: North American Datum 1983
Ellipsoid: GRS 1980
Zone: Colorado Northern Zone
System Datum: Mean Sea Level
Local North: True

LEGEND

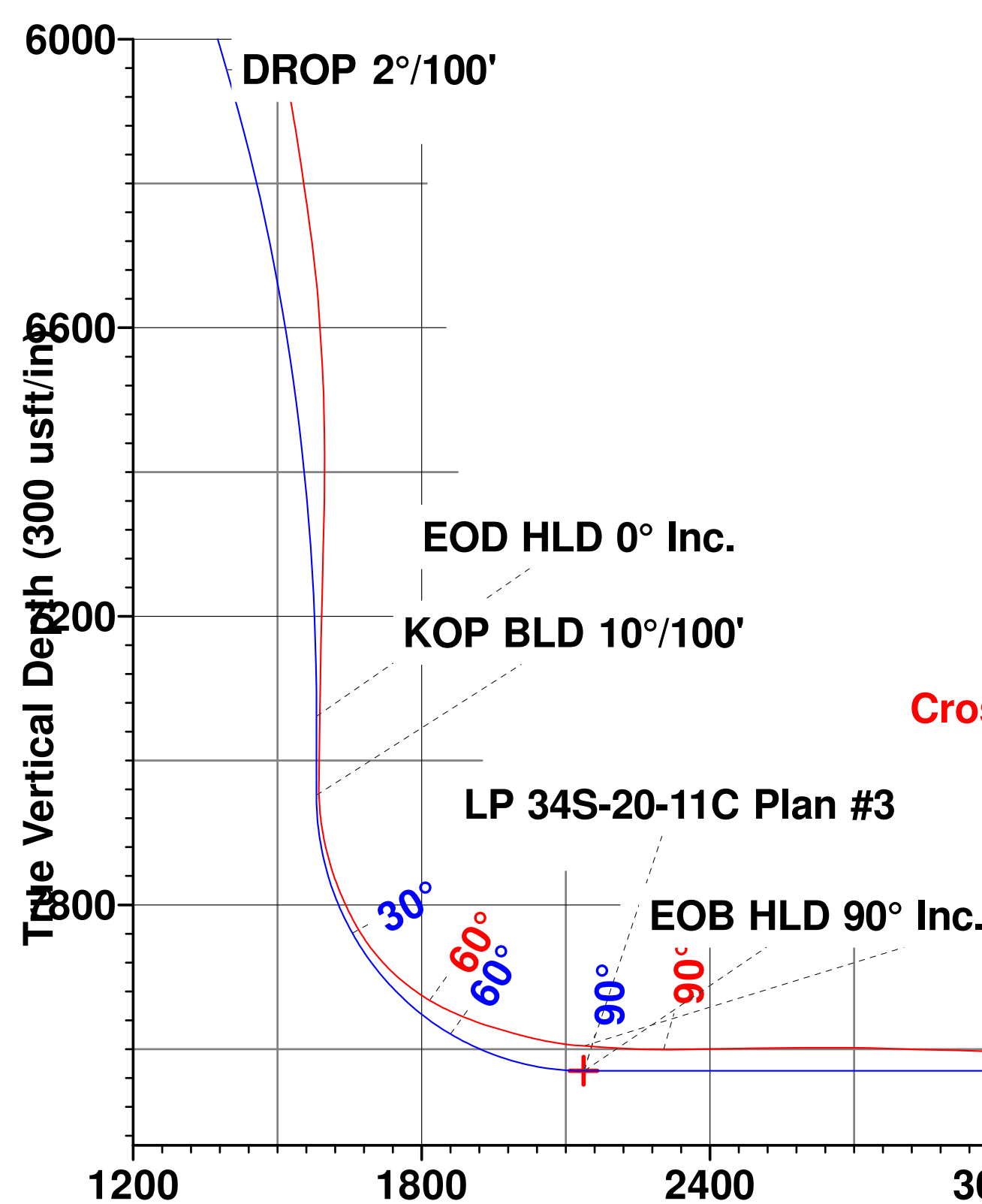
- Hulstrom #4A, Wellbore #1, Wellbore #1 V0
- Graeber 31-33D, Surveys, Surveys V0
- Nordstrom #34-4, Wellbore #1, Wellbore #1 V0
- Nordstrom #44-4, Wellbore #1, Wellbore #1 V0
- Webber #3C, Wellbore #1, Wellbore #1 V0
- Memorial #11-3, Wellbore #1, Wellbore #1 V0
- Graeber 33-33D, Surveys, Surveys V0
- Graeber 33-33Dx, Surveys, Surveys V0
- Hulstrom #41-4, Wellbore #1, Wellbore #1 V0
- Coyote Trails 34S-20-14C, Wellbore #1, Plan #2 V0
- Bickler 4-4-34, Surveys, Surveys V0
- Coyote Trails 34S-20-16N, Wellbore #1, Plan #2 V0
- Coyote Trails 34S-20-16N, Wellbore #1, Wellbore #1 V0
- Coyote Trails 34S-20-15N, Wellbore #1, Wellbore #1 V0
- Coyote Trails 34S-20-15N, Wellbore #1, Plan #2 V0
- Bickler 4-6-34, Wellbore #1, Wellbore #1 V0
- Bickler 23-34, Surveys, Surveys V0
- Webber #13-3, Wellbore #1, Wellbore #1 V0
- Coyote Trails 34S-20-10N, Wellbore #1, Wellbore #1 V0
- Webber #23-3, Wellbore #1, Wellbore #1 V0
- Coyote Trails 34S-20-14C, Wellbore #1, Wellbore #1 V0
- Hulstrom #31-4, Wellbore #1, Wellbore #1 V0
- Bickler 24-34, Surveys, Surveys V0
- Hulstrom #32-4, Wellbore #1, Wellbore #1 V0
- Nordstrom #4D, Wellbore #1, Wellbore #1 V0
- Webber #14-3, Wellbore #1, Wellbore #1 V0
- Nordstrom #43-4, Wellbore #1, Wellbore #1 V0
- Asher #22-4, Wellbore #1, Wellbore #1 V0
- Coyote Trails 34S-20-13N, Wellbore #1, Plan #2 V0
- Coyote Trails 34S-20-13N, Wellbore #1, Wellbore #1 V0
- Coyote Trails 34S-20-12N, Wellbore #1, Wellbore #1 V0
- Coyote Trails 34S-20-12N, Wellbore #1, Plan #2 V0
- Coyote Trails 34S-20-11C, Wellbore #1, Wellbore #1 V0
- Plan #3



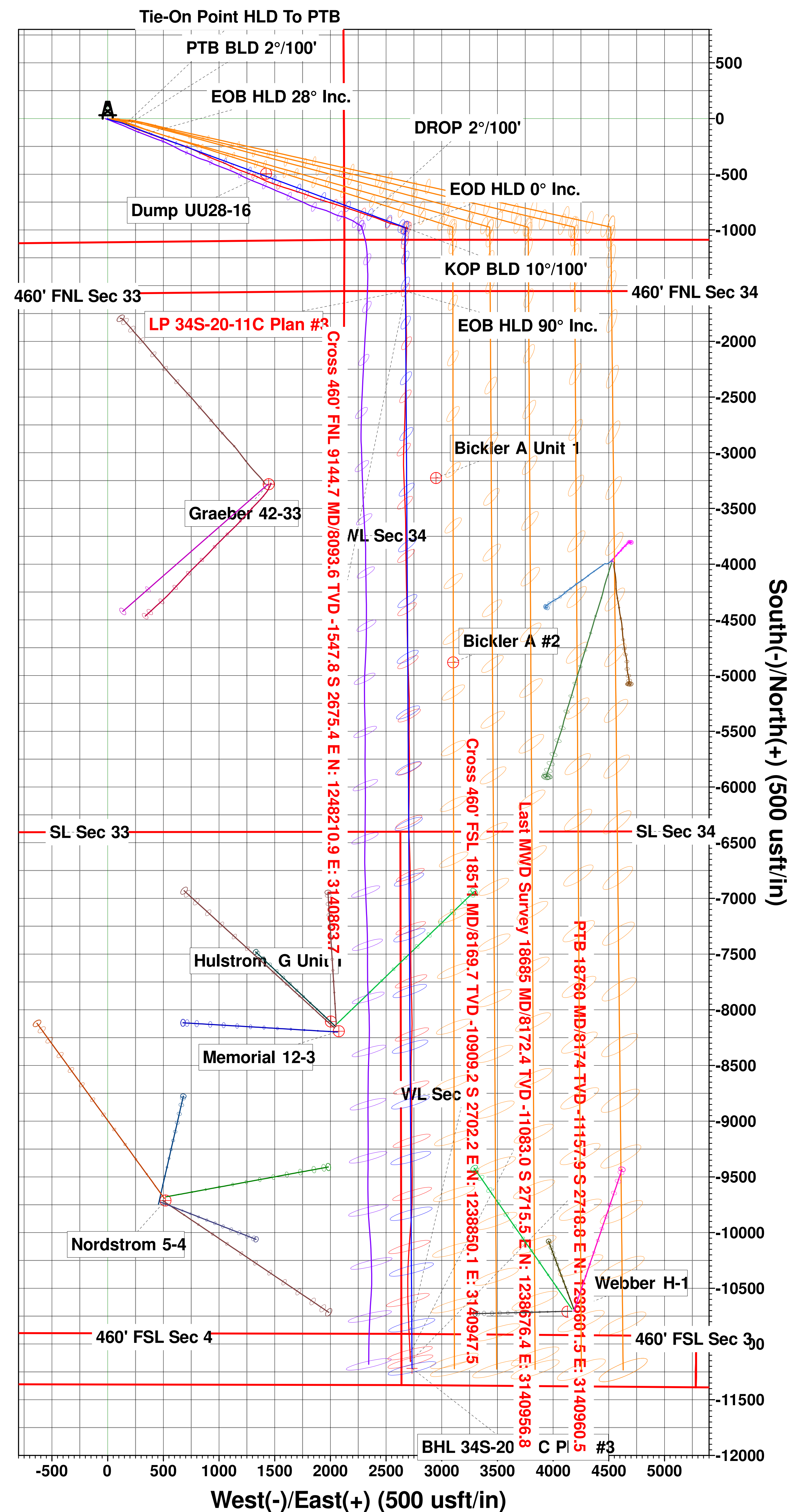
Vertical Section at 166.31° (300 usft/in)



Cross 460' FNL 9144.7 MD/8093.6 TVD -1547.8 S 2675.4 E N: 1248210.9 E: 3140863.7



Vertical Section at 166.31° (300 usft/in)



Last MWD Survey 18685 MD/8172.4 TVD -11083.0 S 2715.5 E N: 1238676.4 E: 3140956.8

Cross 460' FSL 18511 MD/8169.7 TVD -10909.2 S 2702.2 E N: 1238850.1 E: 3140947.5

PTB 18760 MD/8174 TVD -11157.9 S 2718.8 E N: 1238601.5 E: 3140960.5

BHL 34S-20-11C Plan #3