

Amoco Production Company Cimarron-Penrod 2 - D&A Re-Entry

EXISTING WELLBORE DIAGRAM

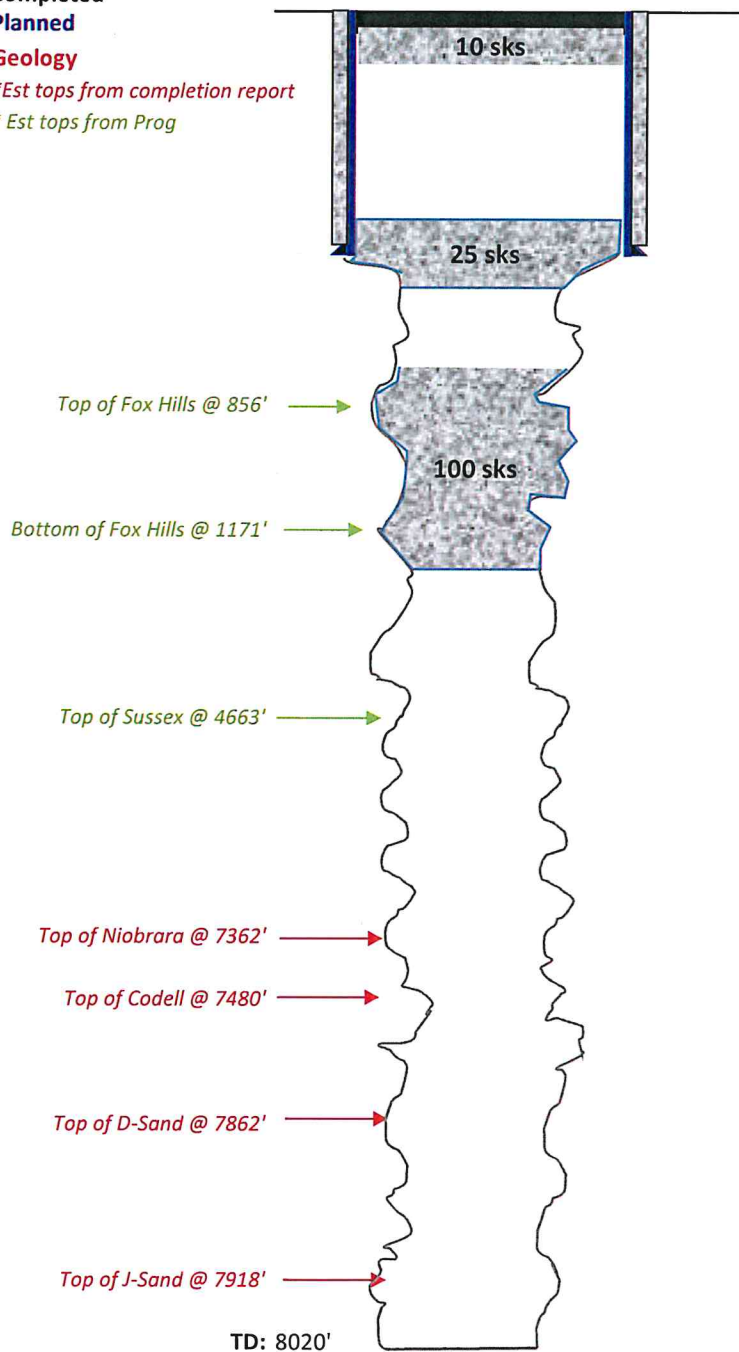
Completed

Planned

Geology

**Est tops from completion report*

**Est tops from Prog*



Elevation: 5103' GL, 5112' KB

Location: 1980' FSL, 1980' FWL

NESW Sec 4, T1S, R65W

Adams County, CO

Field: Wattenberg

Zone: D Sand & J Sand

Spud Date: 7/19/1987

API: 05-001-08830

Surface Casing:

8-5/8", 24# Set @ 176'

Cement w/ 110 sx Reg w/ 3%CaCl

P&A: 7/25/1987

10 Sack Plug @ Surface to 30'

25 Sack Plug @ 150' - 200'

100 Sack Plug @ 800' - 1300'

D Sand: Never Completed

J Sand: Never Completed

Production Casing:

Assume 7-7/8" Hole

(Not to Scale)

Amoco Production Company

Cimarron-Penrod 2 - D&A Re-Entry

PLANNED WELLBORE DIAGRAM

Completed

Planned

Geology

*Est tops from completion report

*Est tops from Prog

Set 69 sx plug in over surface shoe
to surface (250' - 0')

Top of Fox Hills @ 856'

Bottom of Fox Hills @ 1171'

Top of Sussex @ 4663'

Top of Niobrara @ 7362'

Top of Codell @ 7480'

Top of D-Sand @ 7862'

Top of J-Sand @ 7918'

TD: 8020'

69 sks

221 sks

184 sks

Elevation: 5103' GL, 5112' KB

Location: 1980' FSL, 1980' FWL
NESW Sec 4, T1S, R65W
Adams County, CO

Field: Wattenberg

Zone: D Sand & J Sand

Spud Date: 7/19/1987

API: 05-001-08830

Surface Casing:

8-5/8", 24# Set @ 176'

Cement w/ 110 sx Reg w/ 3%CaCl

P&A: 7/25/1987

10 Sack Plug @ Surface to 30'

25 Sack Plug @ 150' - 200'

100 Sack Plug @ 800' - 1300'

Set 221 sx plug over Fox Hills
from ~ 1,300' to 700'

Set 184 sx plug over Niobrara
from ~ 6,000' to 5,500'

D Sand: Never Completed

J Sand: Never Completed

Production Casing:

Assume 7-7/8" Hole

(Not to Scale)