

Inspection Photos

06/12/2018

Operator: ST CROIX OPERATING INC - 81490

Location ID: 454146

Inspection Doc. Number: 682503466

Washington County, CO

Aaron Trujillo
NE Reclamation Specialist
COGCC

Inspection Photos
Operator: ST CROIX OPERATING INC - 81490
Location ID: 454146



Photo 1: Photo taken from the west end of the location, facing northeast. Photos 1-3 provide an overview of the location from northeast, east, to south. Photos show that the pit on the south end of the location appears to be the only area of the location where topsoil has been salvaged. Photos show operator has not salvaged topsoil from the remaining Oil and Gas location during construction operations; various equipment, including the drilling rig, have been set up, and have operated directly upon the surface of the topsoil.



Photo 2: Photo taken from the west end of the location, facing east. See comments under photo 1.

Inspection Photos
Operator: ST CROIX OPERATING INC - 81490
Location ID: 454146



Photo 3: Photo taken from the west end of the location, facing south. See comments under photo 1.



Photo 4: Photo taken from the southwest end of the location, facing north. Photo shows no perimeter stormwater controls have been installed. A tackifier appears to have been applied to the berms at the pit.

Inspection Photos
Operator: ST CROIX OPERATING INC - 81490
Location ID: 454146



Photo 5: Photo taken from the southwest end of the location, facing east. See comments under photo 4.



Photo 6: Photo taken from the southeast end of the location, facing west. See comments under photo 4.

Inspection Photos
Operator: ST CROIX OPERATING INC - 81490
Location ID: 454146



Photo 7: Photo taken from the southeast end of the location, facing north. See comments under photo 4.



Photo 8: Photo taken from the east end of the location, facing southwest. Photos 8-10 provide an overview of the location from southwest, west, to north. Photos show that the pit on the south end of the location appears to be the only area of the location where topsoil has been salvaged. Photos show operator has not salvaged topsoil from the remaining Oil and Gas location during construction operations; various equipment, including the drilling rig, have been set up, and have operated directly upon the surface of the topsoil.

Inspection Photos
Operator: ST CROIX OPERATING INC - 81490
Location ID: 454146



Photo 9: Photo taken from the east end of the location, facing west. See comments under photo 1.



Photo 10: P Photo taken from the east end of the location, facing north. See comments under photo 1.



Photo 11: Photo taken from the eastern side of where the drill rig sits. Photo shows areas where stained and/or contaminated soil from various spills or drips were observed on the topsoil of the location. 6 foot measuring stick for reference. This is not protective of topsoil in accordance to 1001.a



Photo 12: See comments under photo 11.

Inspection Photos
Operator: ST CROIX OPERATING INC - 81490
Location ID: 454146



Photo 13: Photo taken at from the southern side of the drill rig. Photo shows areas where what appears to be drilling mud and various other chemical contaminants have spilled on the topsoil of the location.

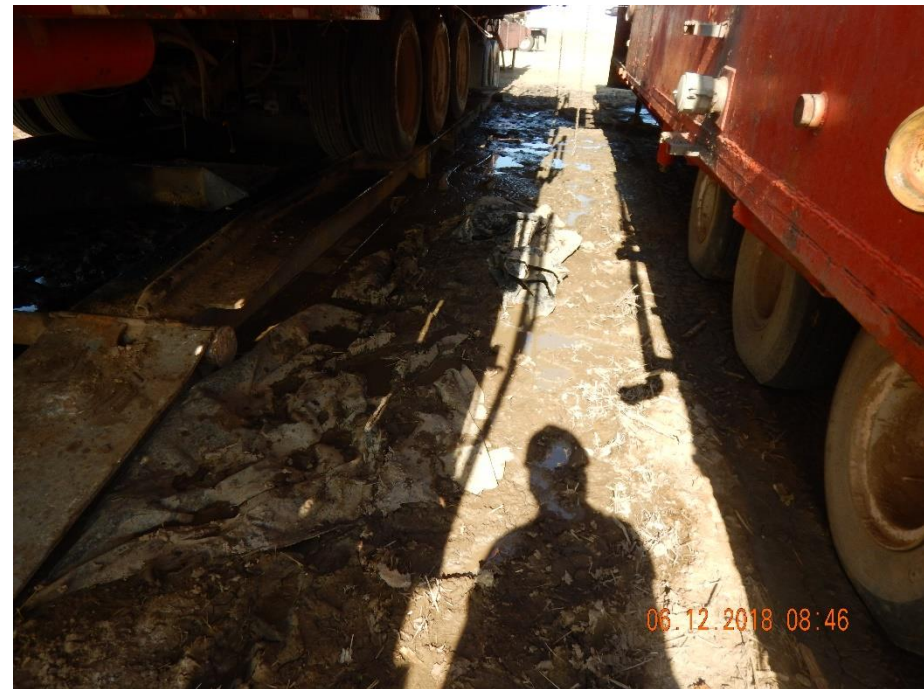


Photo 14: Photo taken at from the northern side of the drill rig. Photo shows areas where what appears to be drilling mud and various other chemical contaminants have spilled on the topsoil of the location.

Inspection Photos
Operator: ST CROIX OPERATING INC - 81490
Location ID: 454146



Photo 15: Photo taken from the west end of the drill rig. Photo shows areas where what appears to be drilling mud and various other chemical contaminants have spilled on the topsoil of the location.



Photo 16: Photo taken from the northern end of the location. Photo of two (2) portable toilets on location. Photo shows portable toilets have not been staked down, or secured in accordance to best management practices.

Inspection Photos
Operator: ST CROIX OPERATING INC - 81490
Location ID: 454146



Photo 17: Photo taken from the north end of the location, facing south. See comments under photo 8.



Photo 18: Photo taken from the north end of the location, facing southwest. See comments under photo 8.

Inspection Photos
Operator: ST CROIX OPERATING INC - 81490
Location ID: 454146



Photo 19: Photo taken at from the southwest end of the drill rig. Photo shows areas where what appears to be drilling mud and various other chemical contaminants have spilled on the topsoil of the location. 6 foot measuring stick for reference.



Photo 20: See comments under photo 19.



Photo 21: See comments under photo 19.



Photo 22: See comments under photo 19.

Inspection Photos
Operator: ST CROIX OPERATING INC - 81490
Location ID: 454146



Photo 23: Photo taken from the southeast end of the State 11-16 well (121-10990). Photo shows operator has stored various equipment for the location being constructed at this site. Disturbances created at this location will need to be reclaimed.



Photo 24: Photo taken from the northern end of the State 11-16 well (121-10990). Photo shows operator has stored various equipment for the location being constructed at this site. Disturbances created at this location will need to be reclaimed.