

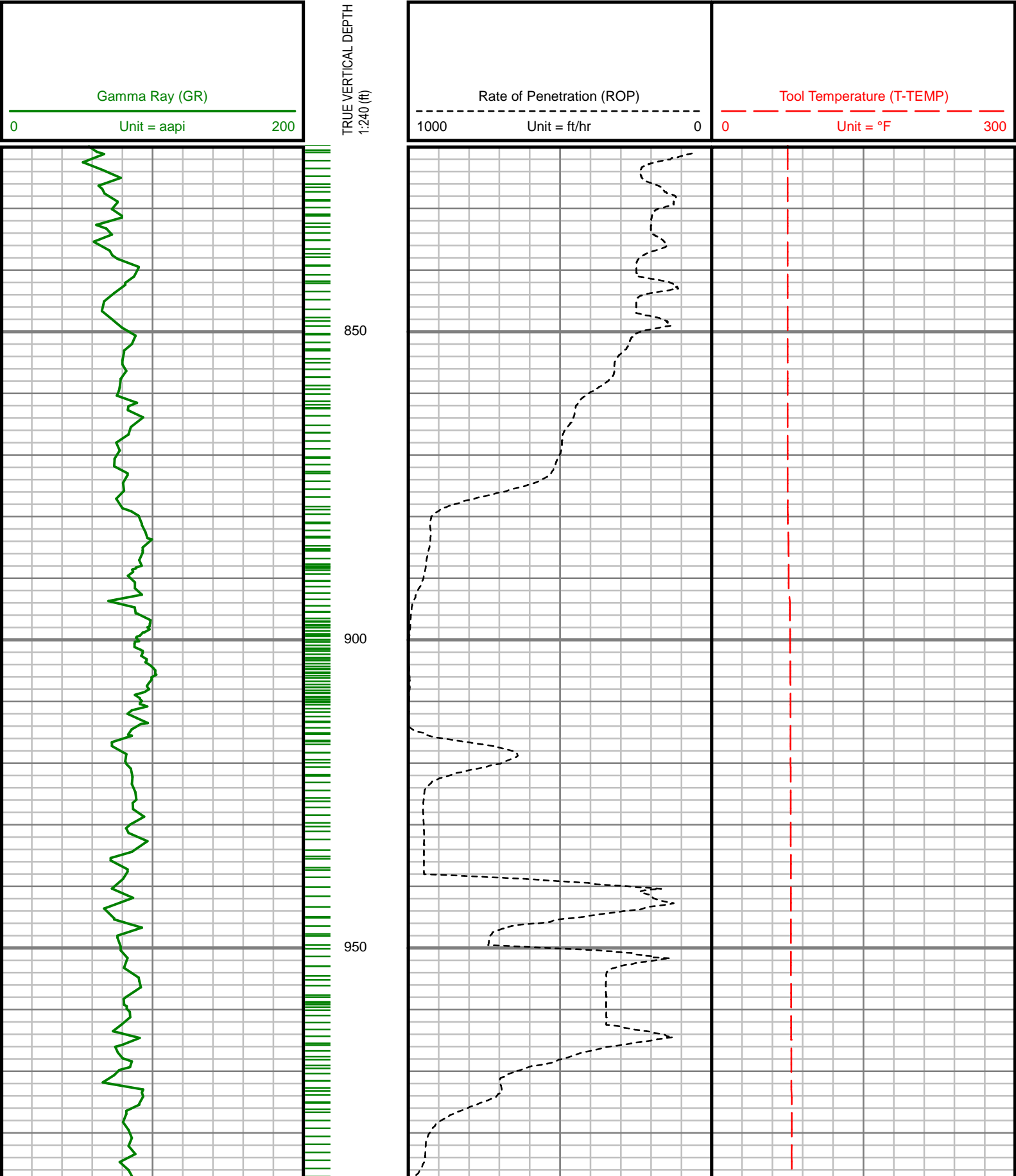
5" = 100' TVD

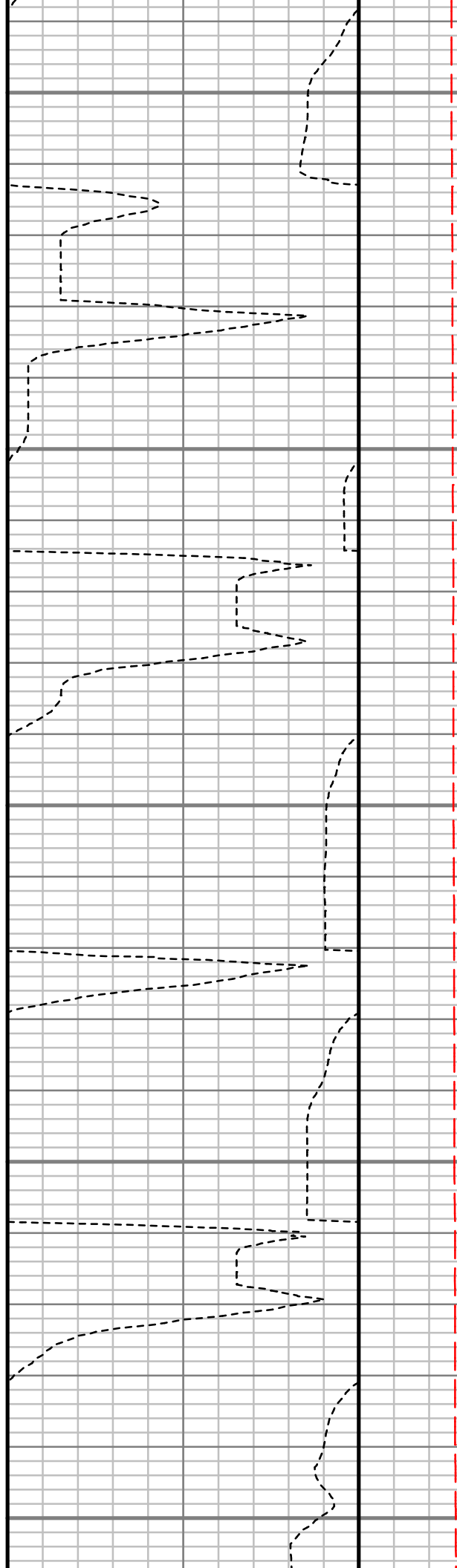
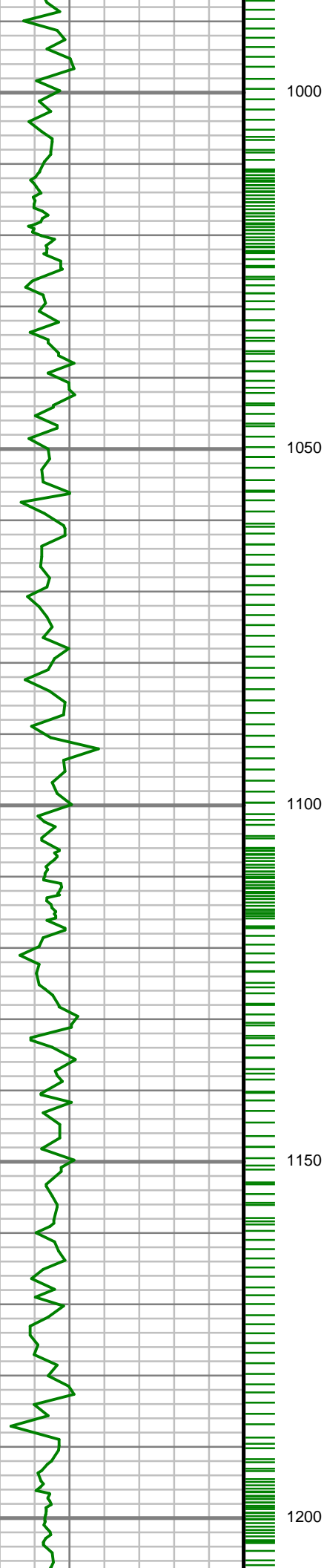
COMPANY : HIGH POINT RESOURCES WELL : ANSCHUTZ EQUUS FARMS 4-62-28-6457CB FIELD : WATTENBERG COUNTY : WELD STATE : COLORADO COUNTRY : U.S.A. UWI : 05-123-43721					
COMPANY : HIGH POINT RESOURCES WELL : ANSCHUTZ EQUUS FARMS 4-62-28-6457CB FIELD : WATTENBERG COUNTY : WELD STATE : COLORADO COUNTRY : U.S.A. UWI : 05-123-43721			WELL LOCATION LAT:40°16'34.769"N LONG:104°20'12.401"W N:1345635.24 ft E:3324551.08 ft SEC:28 TWP:4N RANGE:62W		
DEPTH REF. : RKB REF. HEIGHT : 20.000 ft GROUND LEVEL : 4634.900 ft			RKB to Ground Level G.L. to MEAN SEA LEVEL		
BOREHOLE RECORD			DEVIATION RECORD		
HOLE SIZE in	FROM ft	TO ft	INCLINATION deg	FROM ft	TO ft
12.75	0	821	0 - 13	0	2716
8.75	821	6673	13 - 0	2716	4691
6.125	6673	16322	0 - 0	4691	5817
			0 - 83	5817	6614
			83 - 93	6614	16322
CASING RECORD			DRILLING CO. : SAVANNA RIG : 802 LWD UNIT NO. : KIT MUD PUDISTRICT : CASPER SPUD DATE : 01/20/2018 LWD START DATE : 03/25/2018 LWD END DATE : 04/01/2018 DEPTH : 821 ft DEPTH : 16322 ft TOTAL DEPTH : 16322 ft		
CASING SIZE in	FROM ft	TO ft			
9.625	0	820			
7	0	6653			

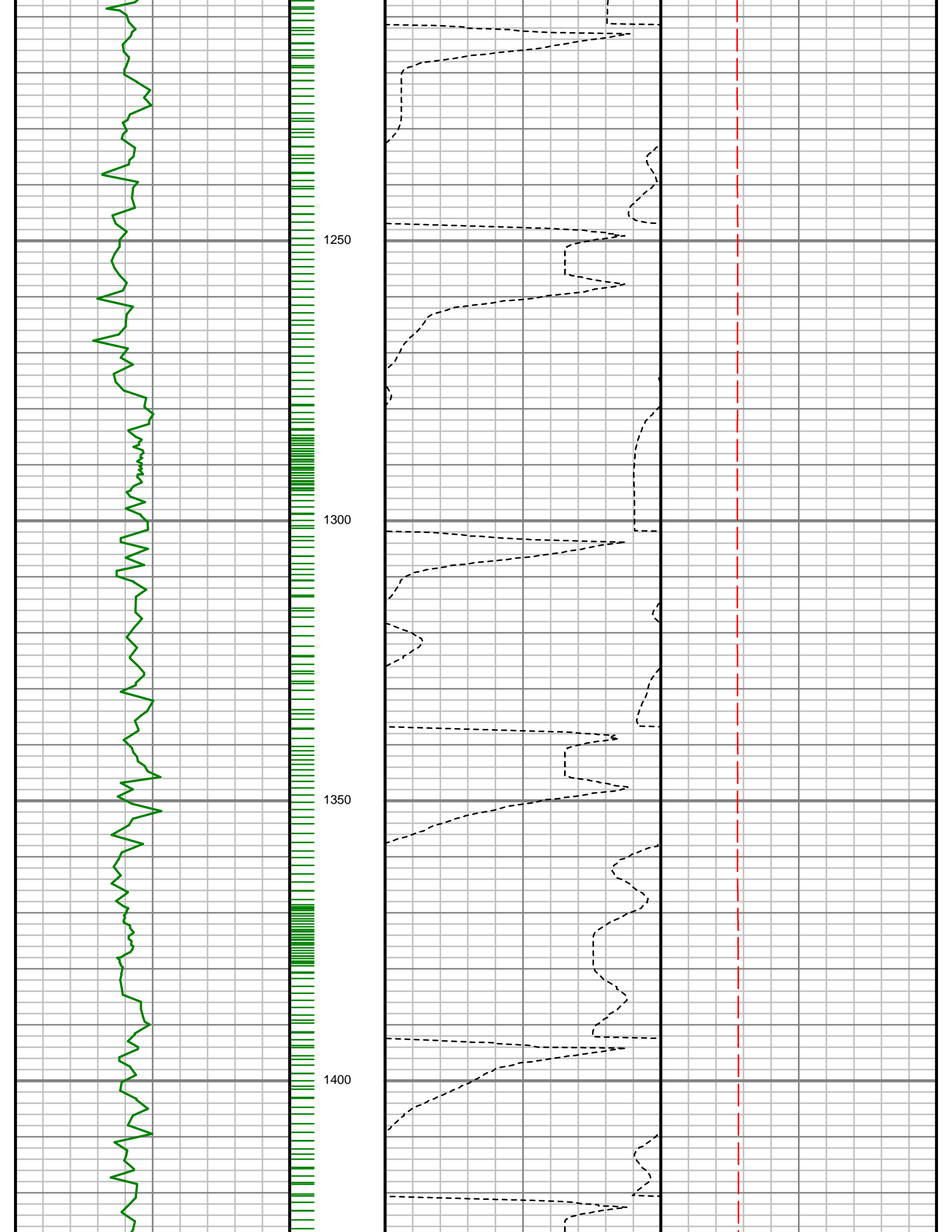
Run Data						
RUN NUMBER	1	2	3	4	5	
START DATE	03/25/2018	03/27/2018	03/28/2018	03/29/2018	03/31/2018	
START TIME	04:45	01:30	10:40	16:20	13:30	
END DATE	03/26/2018	03/28/2018	03/29/2018	03/31/2018	04/01/2018	
END TIME	11:15	10:20	16:00	12:20	08:35	
DEPTH IN (ft)	821	6673	9621	12608	15828	
DEPTH OUT (ft)	6673	9621	12608	15828	16322	
LOG TOP (ft)	821	6619	9565	12556	15776	
LOG BOTTOM (ft)	6619	9565	12556	15776	16265	
HOLE SIZE (in)	8.75	6.125	6.125	6.125	6.125	
MUD DATA @ (ft)	6673	9621	12608	15828	16322	
MUD TYPE	WATER BASED	WATER BASED	WATER BASED	WATER BASED	WATER BASED	
DENSITY (lb / gal)	10.15	8.6	8.95	8.6	8.8	
VISCOSITY (s / qt)	40	28	29	31	29	
pH	7.8	9.5	8.7	8.3	8.3	
FLUID LOSS (cm3 / 30)	-	-	-	-	-	
SALINITY (ppm)	-	-	-	-	-	
Rm (ohmm @ deg F)	-	-	-	-	-	
Rmf (ohmm @ deg F)	-	-	-	-	-	
MAX TEMP (deg F)	177	177	225	235	233	
Rm @ MAX TEMP (ohmm)	-	-	-	-	-	
LWD ENGINEER #1	M. SMITH	M. SMITH	M. SMITH	M. SMITH	M. SMITH	
LWD ENGINEER #2	G. SAKOU	A. CARTER	A. CARTER	A. CARTER	A. CARTER	
LWD ENGINEER #3	D. GEYER	D. GEYER	D. GEYER	D. GEYER	D. GEYER	
LOG WTINNESS #1	K. MOORE	K. MOORE	K. MOORE	K. MOORE	K. MOORE	
LOG WTINNESS #2	-	-	-	-	-	

All interpretations are opinions based on inferences from electrical or other measurements and we cannot, and do not guarantee the accuracy or correctness of any interpretations, and we shall not, except in the case of gross or willful negligence on our part, be liable or responsible for any loss, costs, damages or expenses incurred or sustained by anyone resulting from any interpretation made by any of our officers, agents or employees. These interpretations are also subject to our general terms and conditions as set out in our current price schedule.

HIGH POINT RESOURCES
ANSCHUTZ EQUUS FARMS 4-62-28-6457CB
WATTENBERG FIELD
WELD COUNTY, COLORADO
05-123-43721







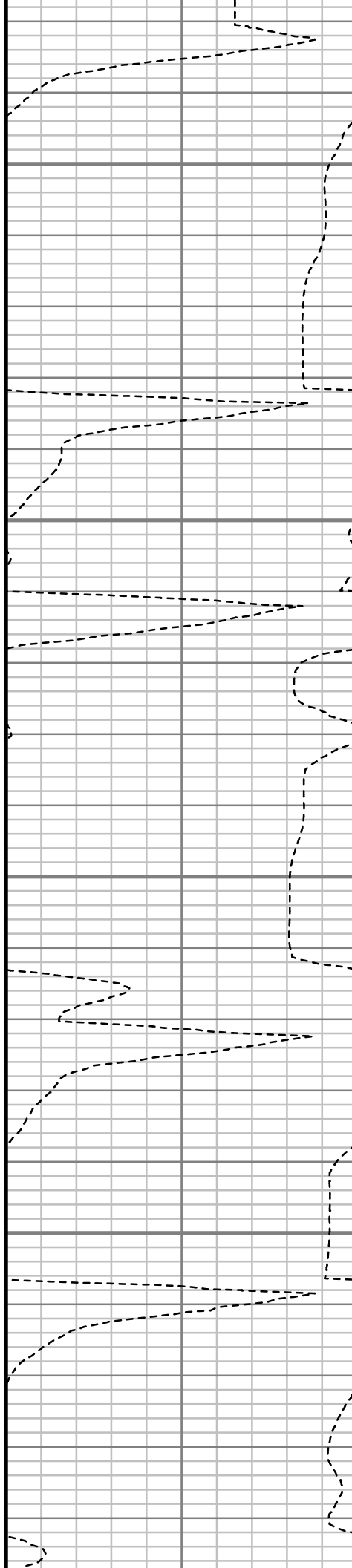


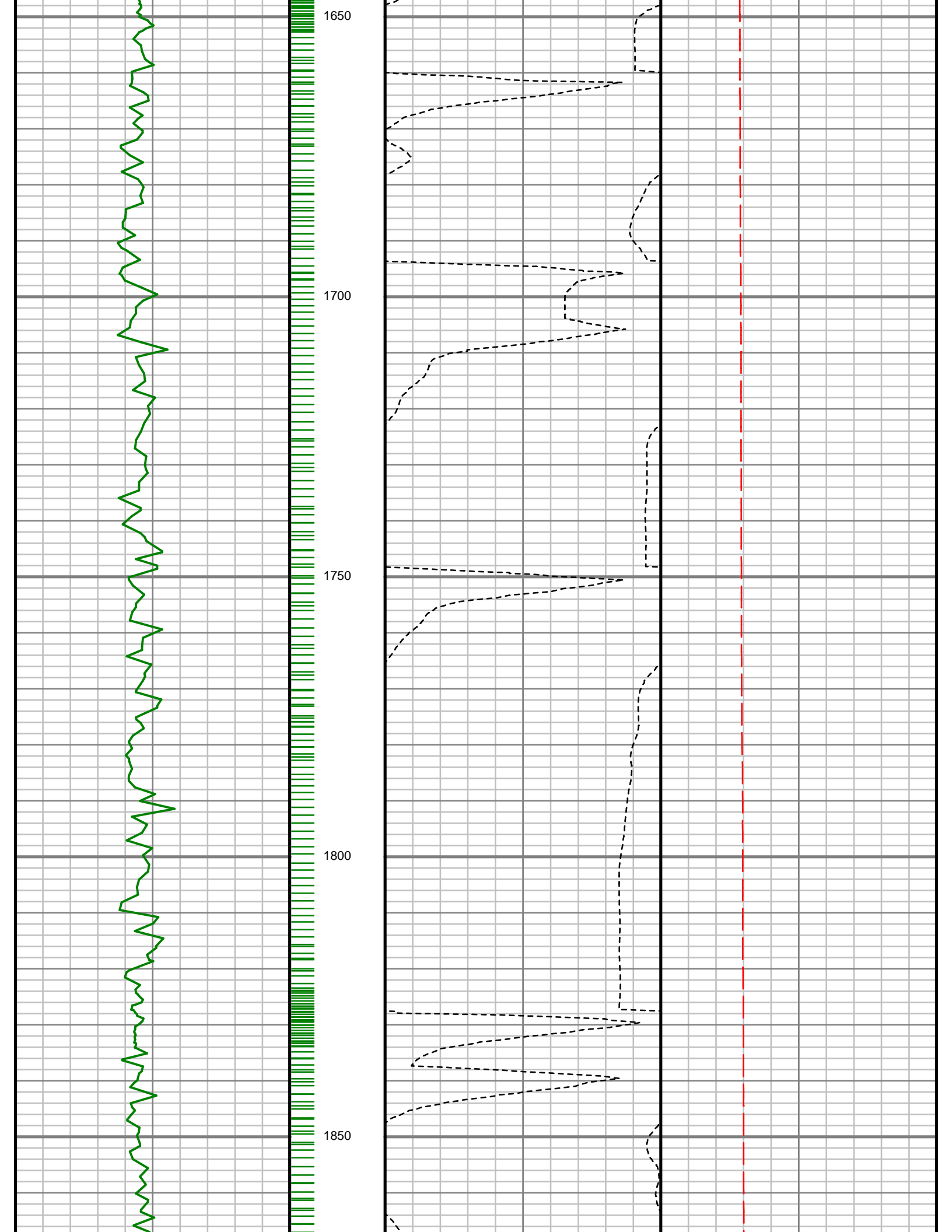
1450

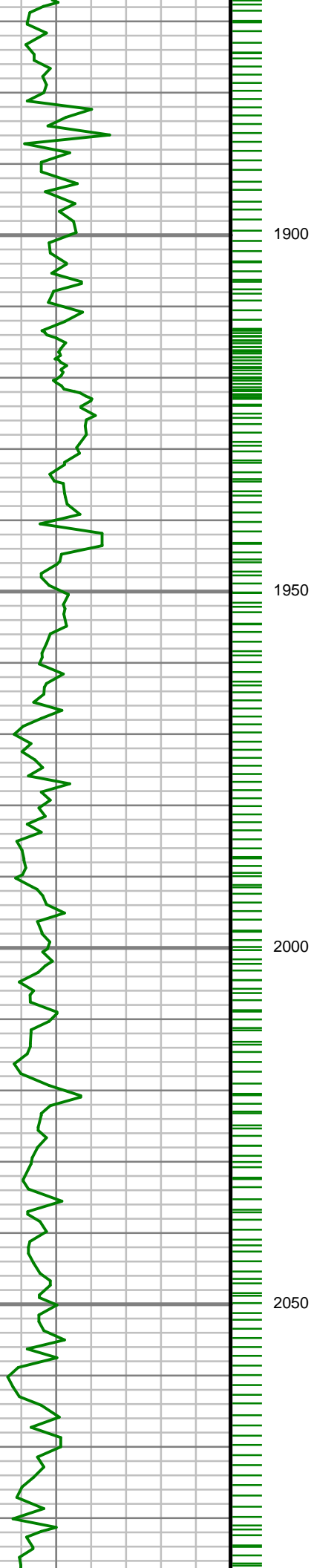
1500

1550

1600





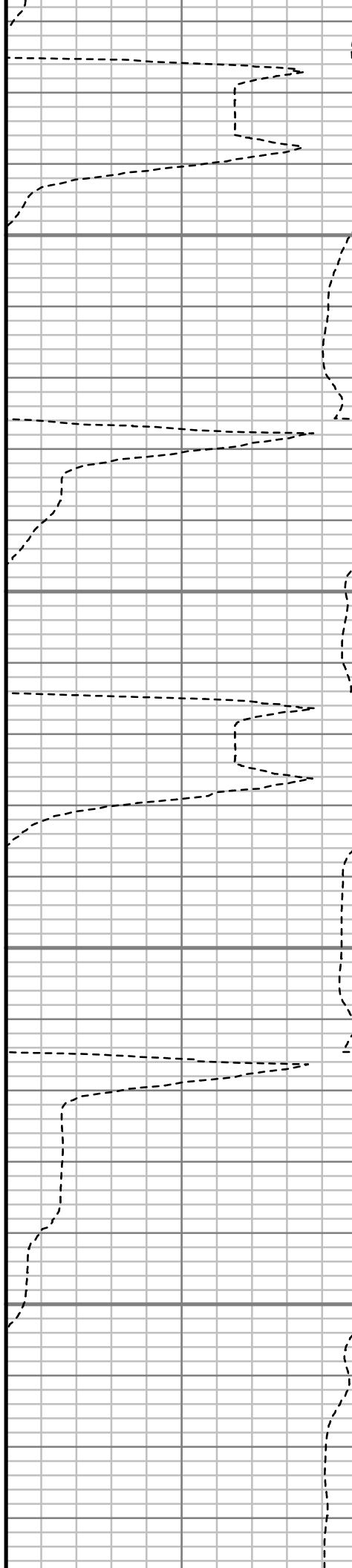


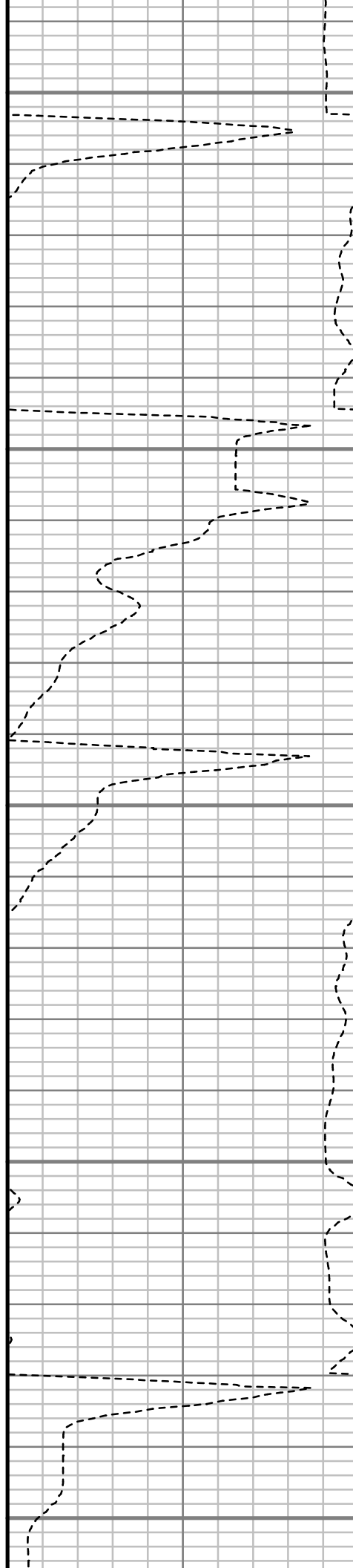
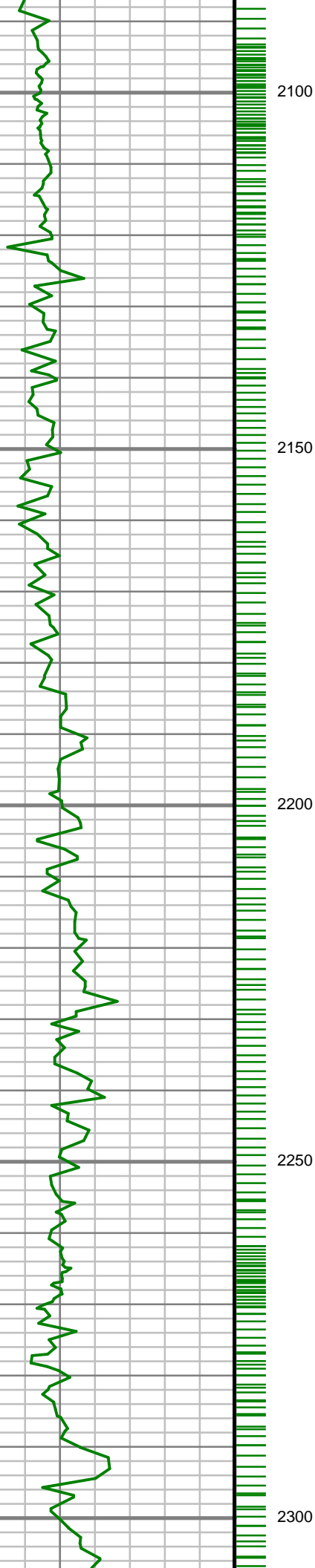
1900

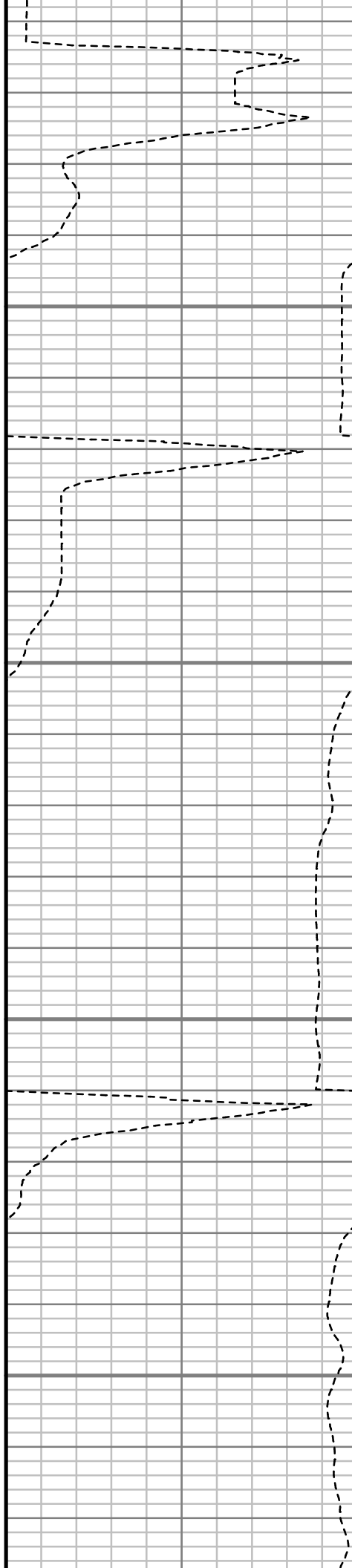
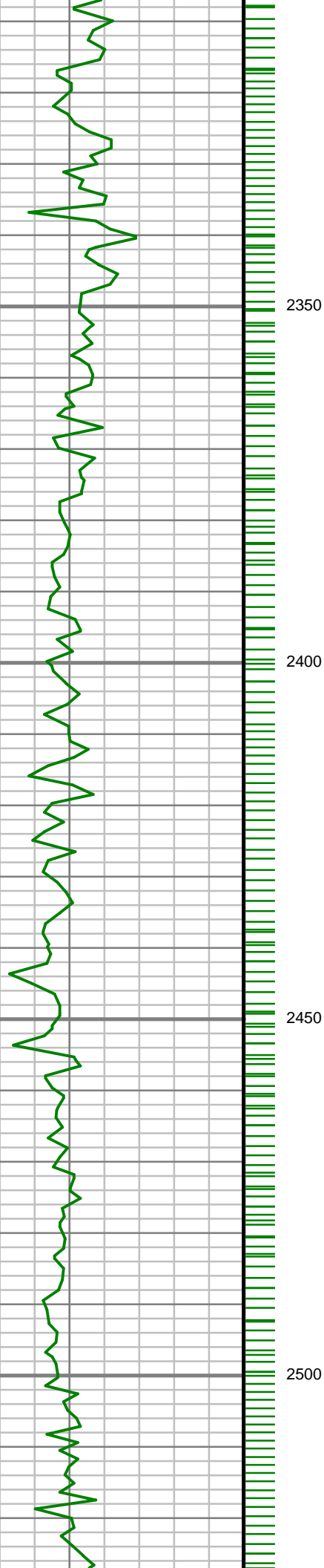
1950

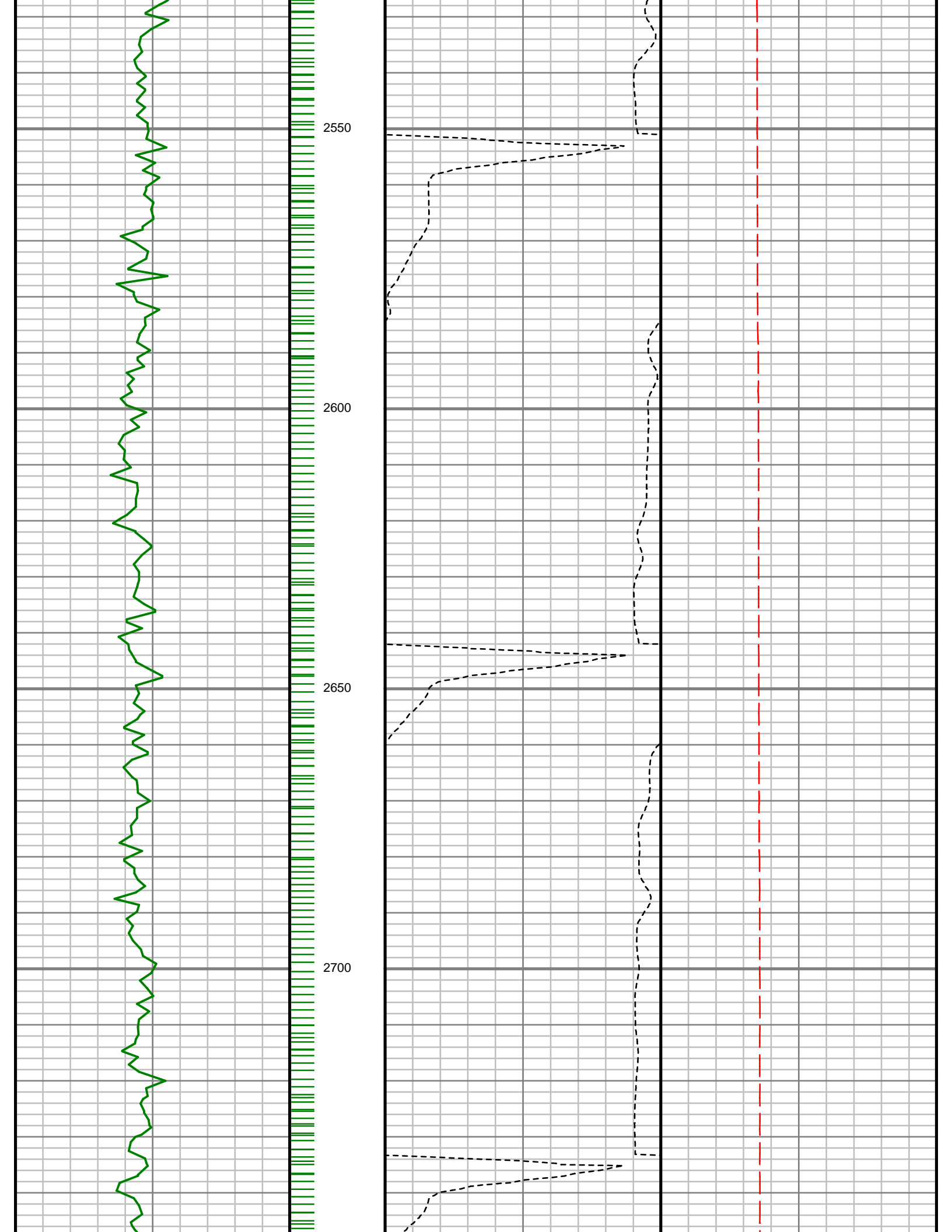
2000

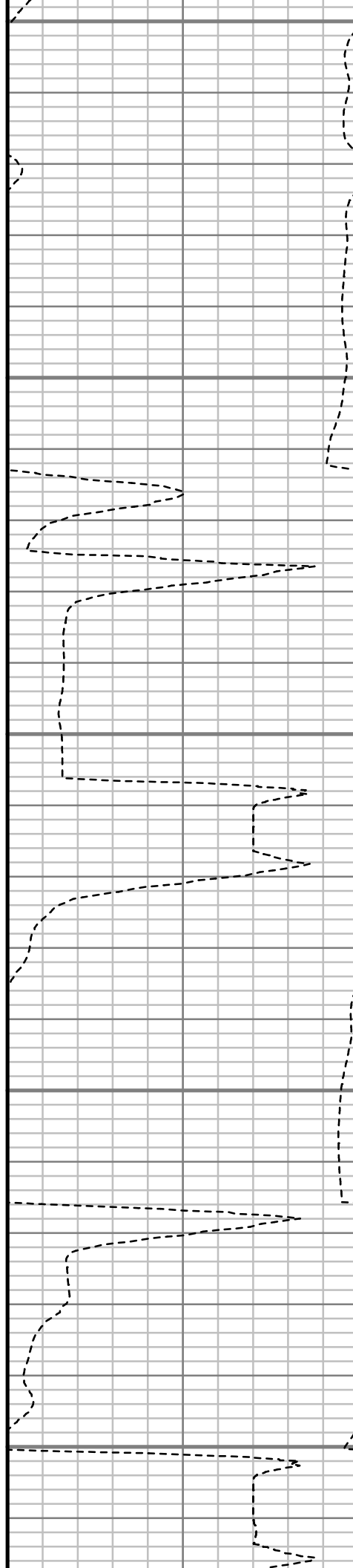
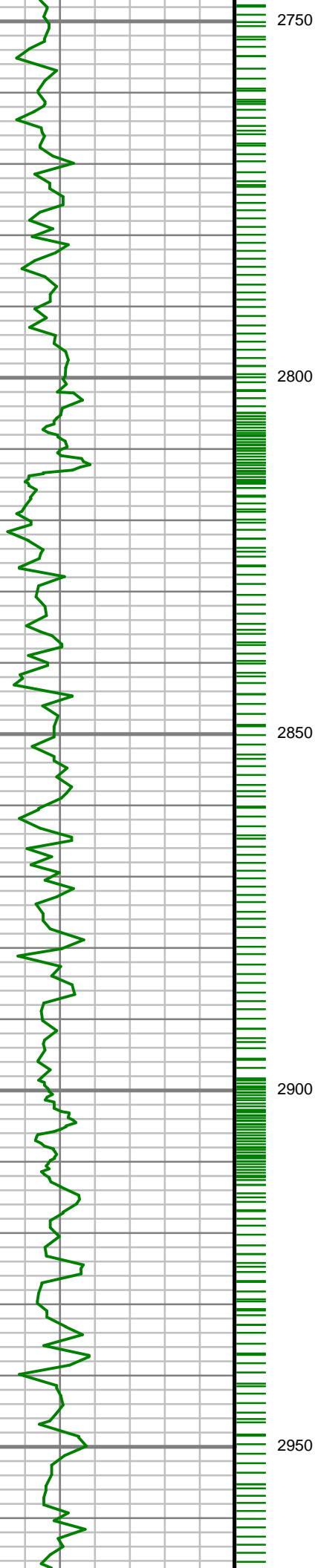
2050











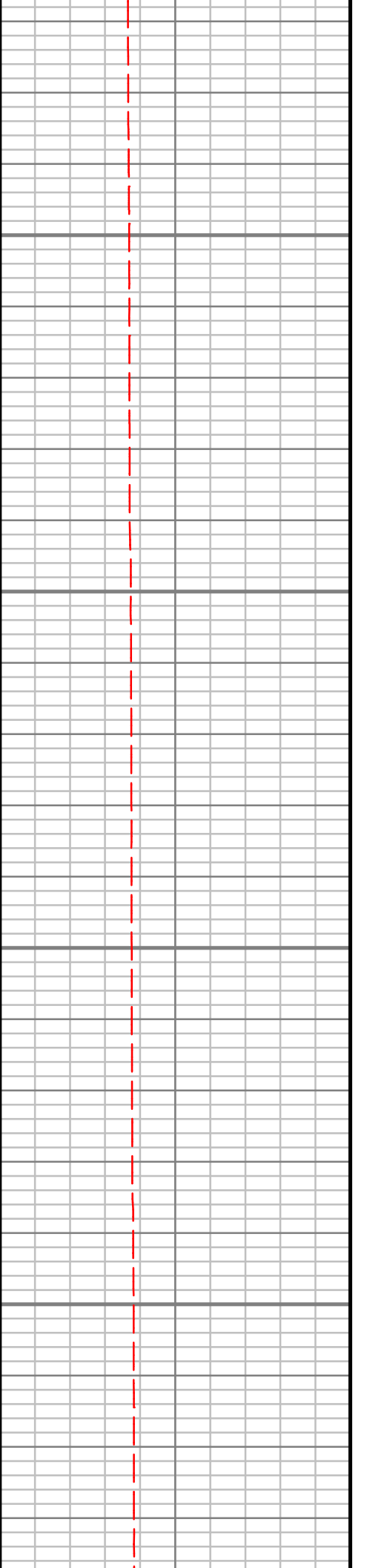
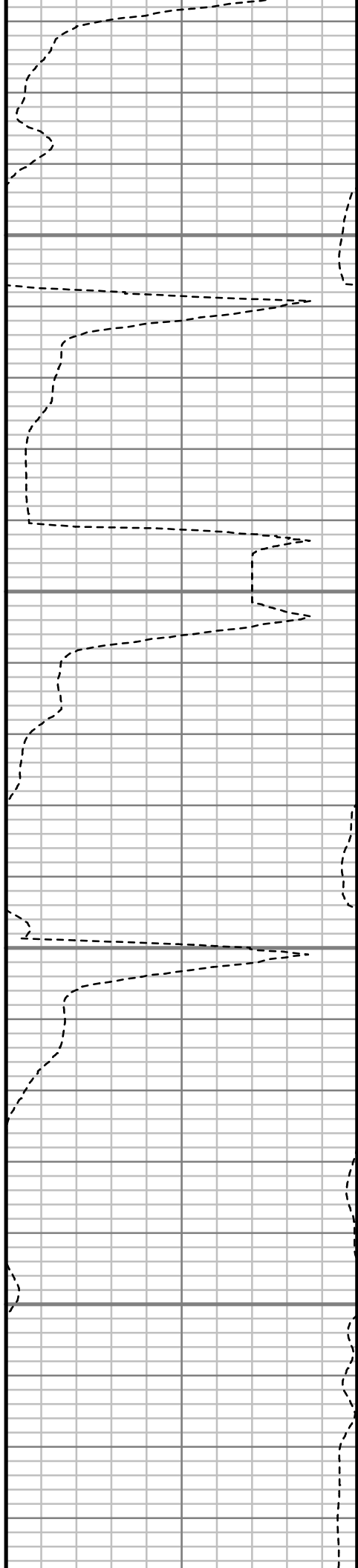


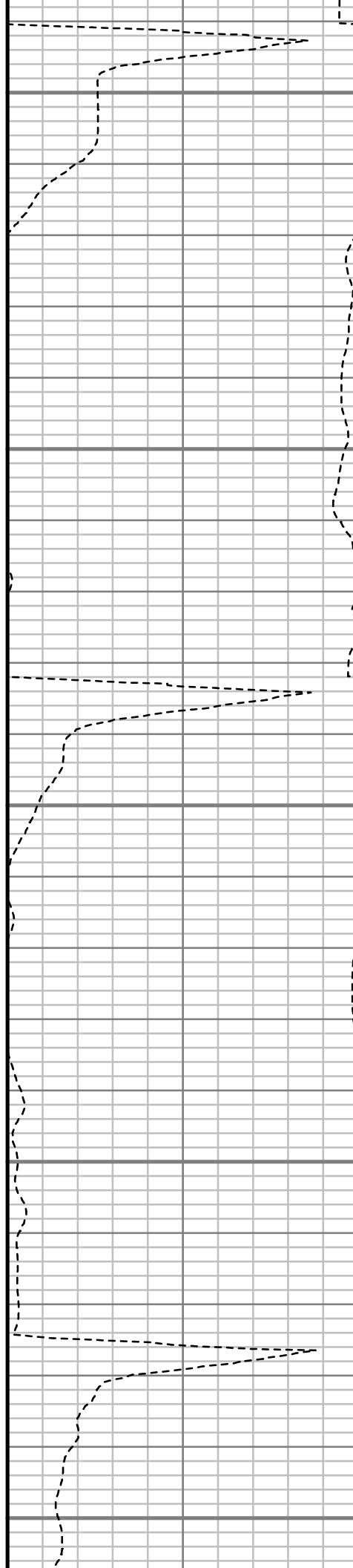
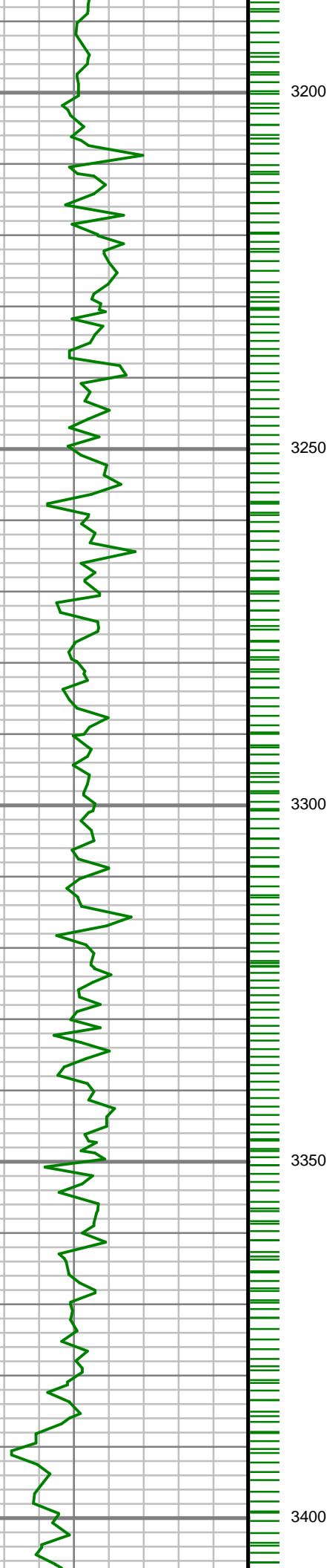
3000

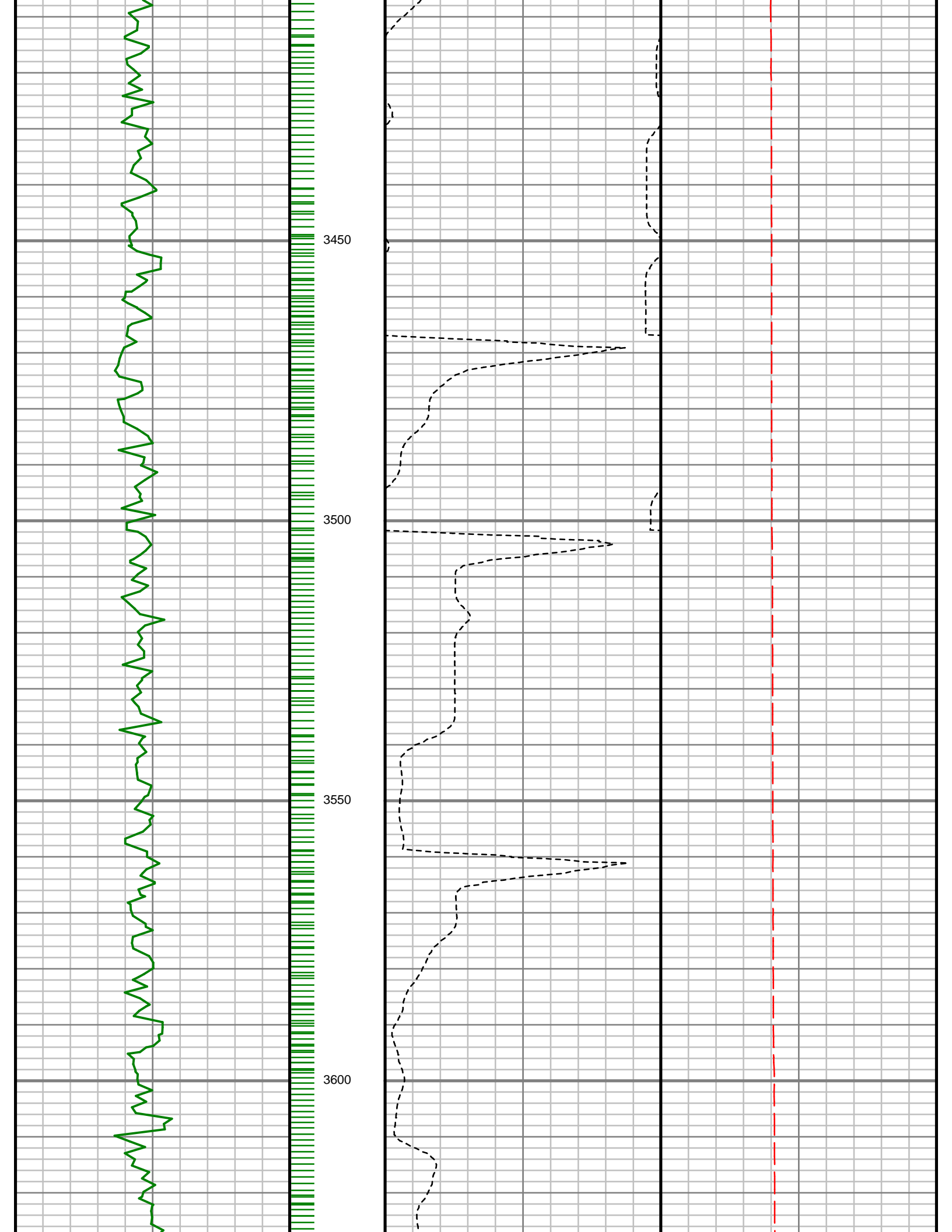
3050

3100

3150







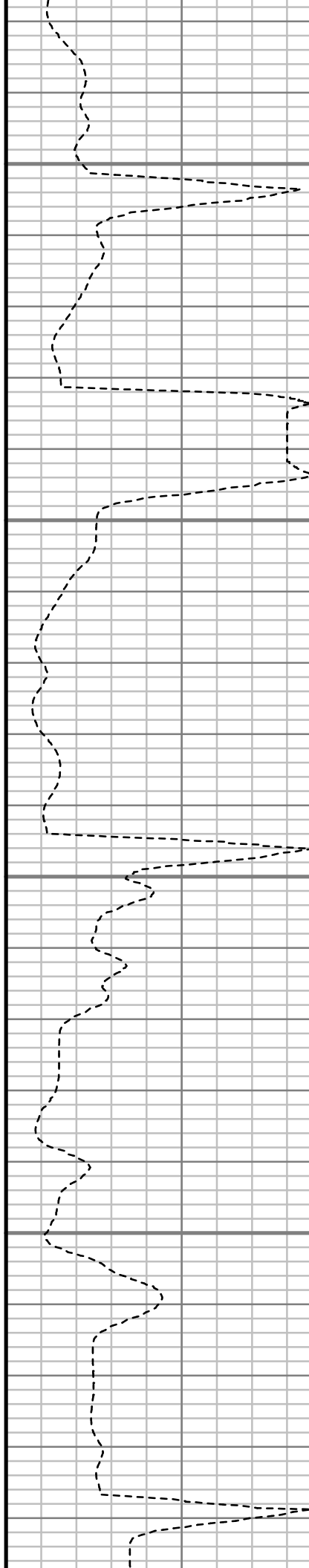


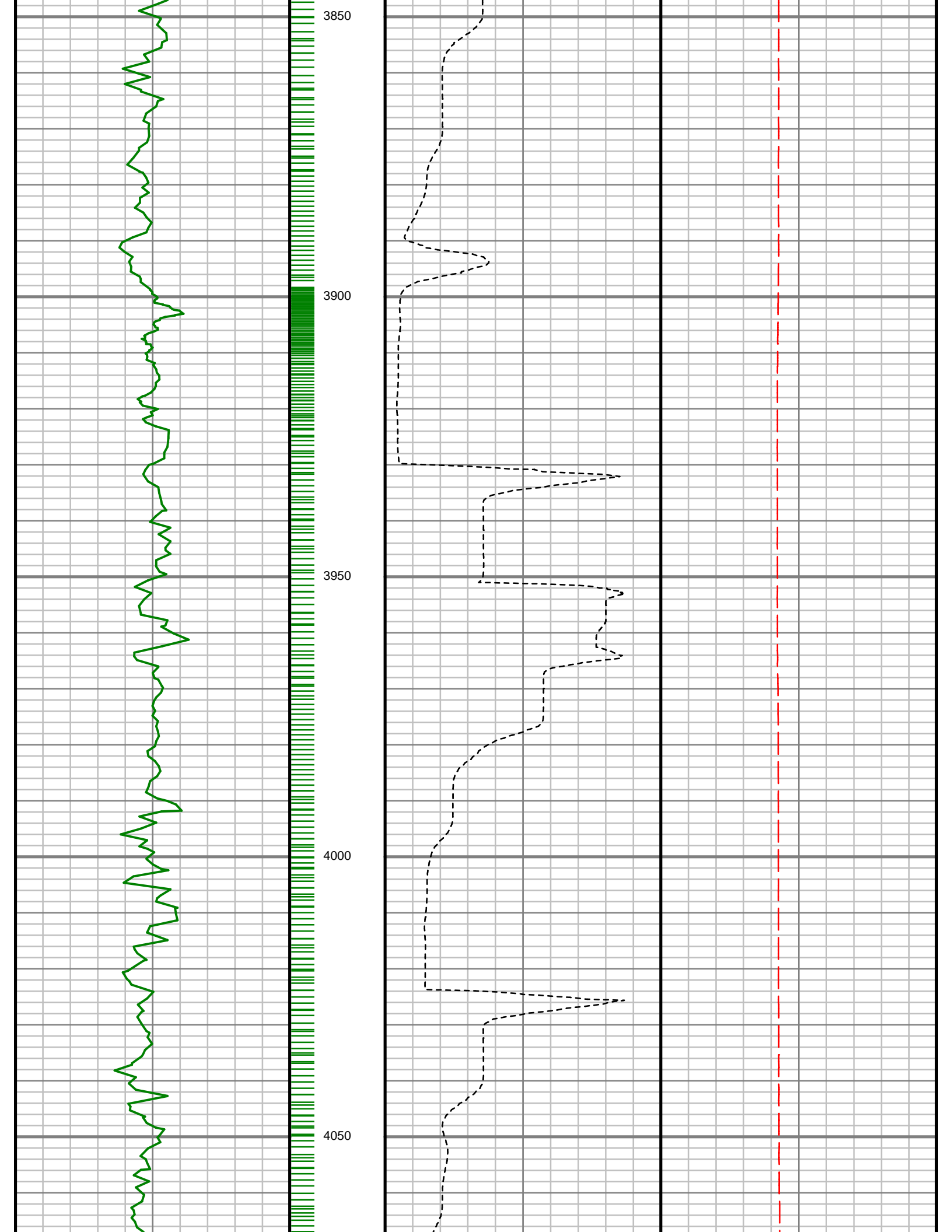
3650

3700

3750

3800





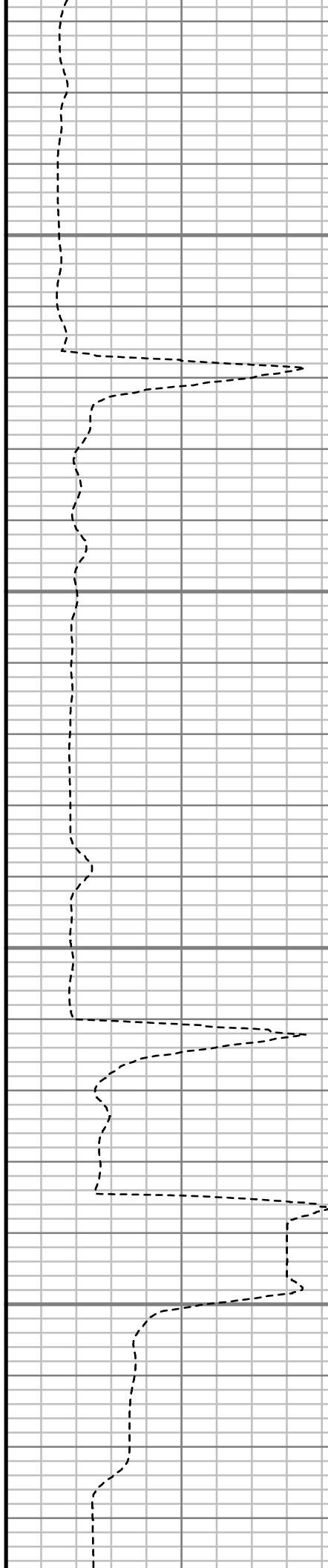


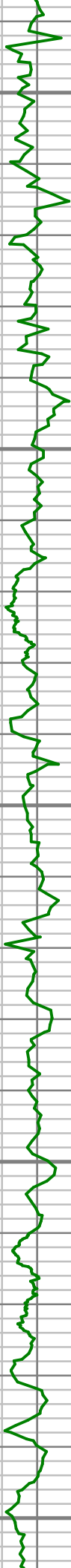
4100

4150

4200

4250





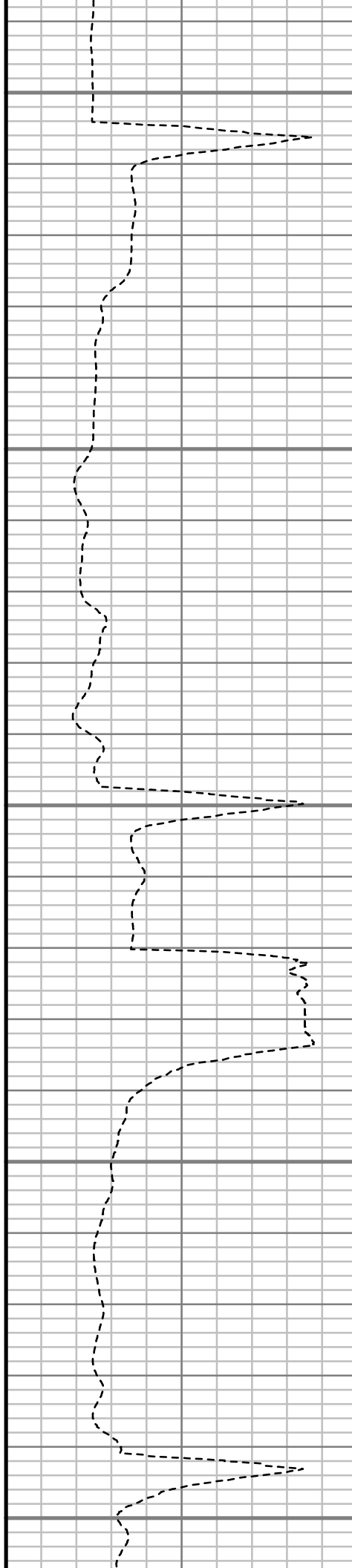
4300

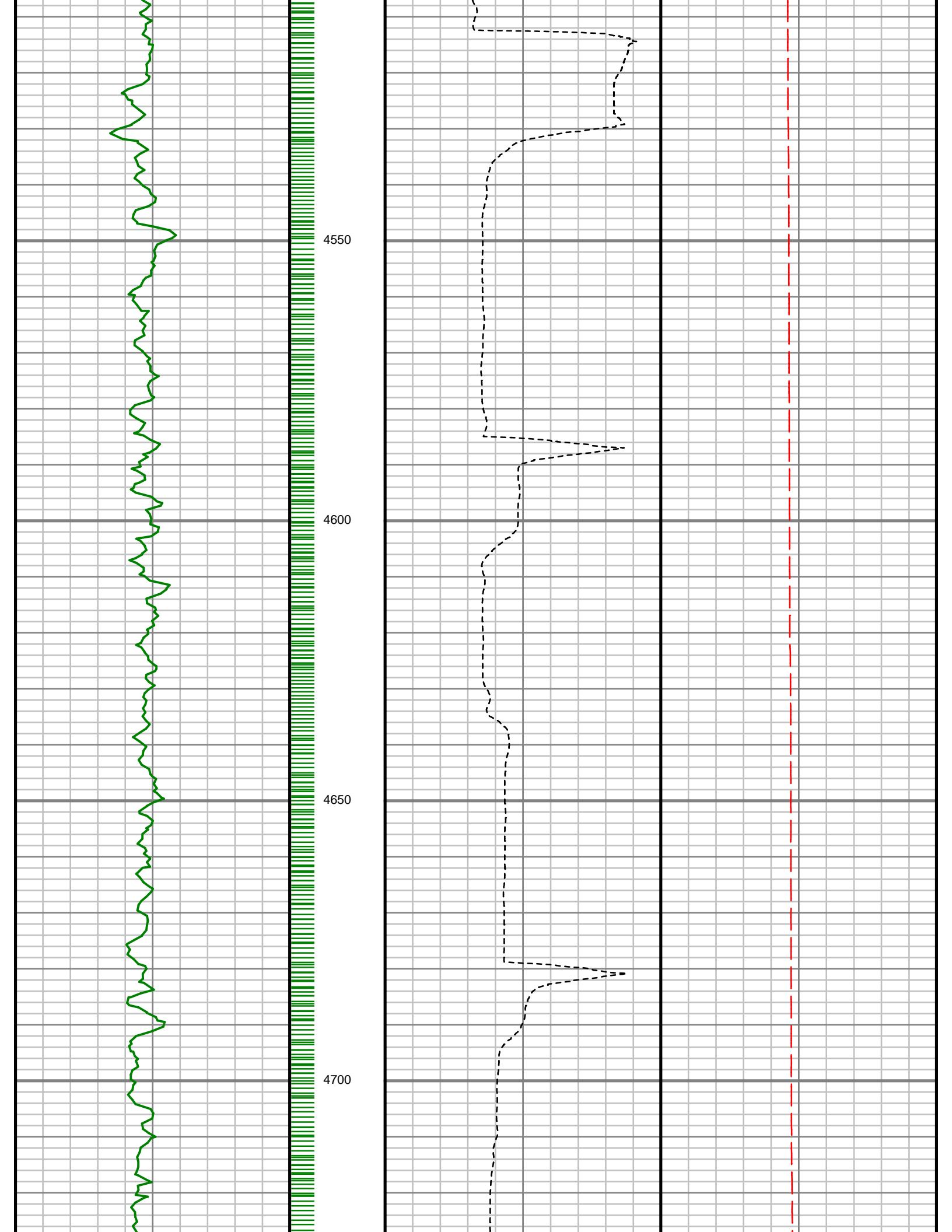
4350

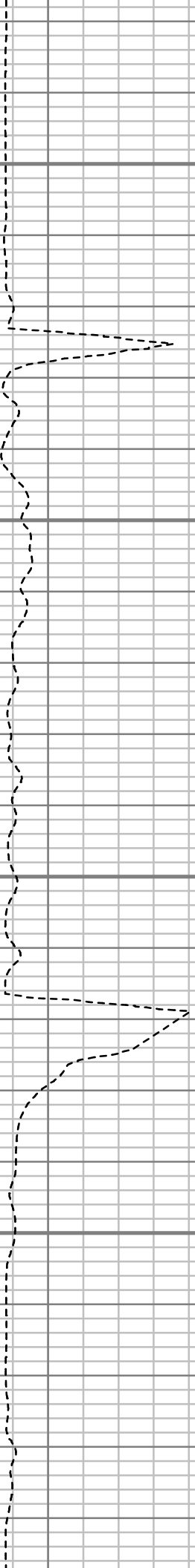
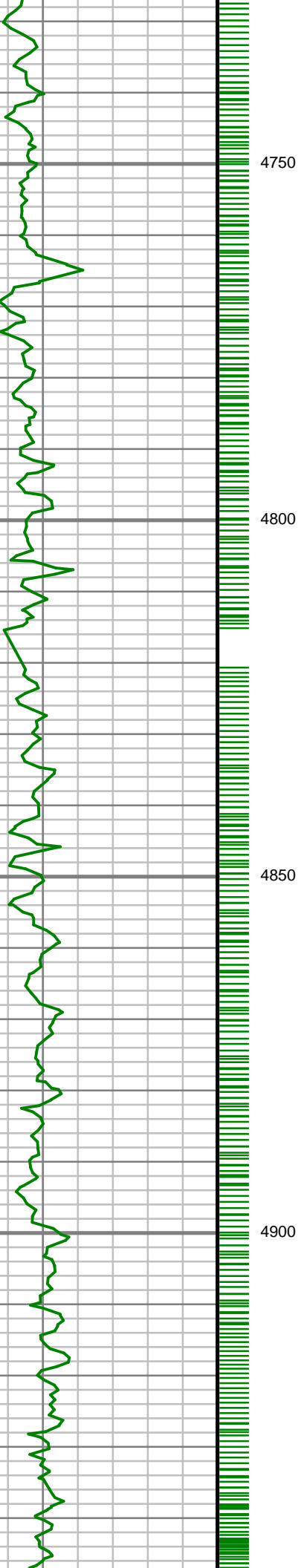
4400

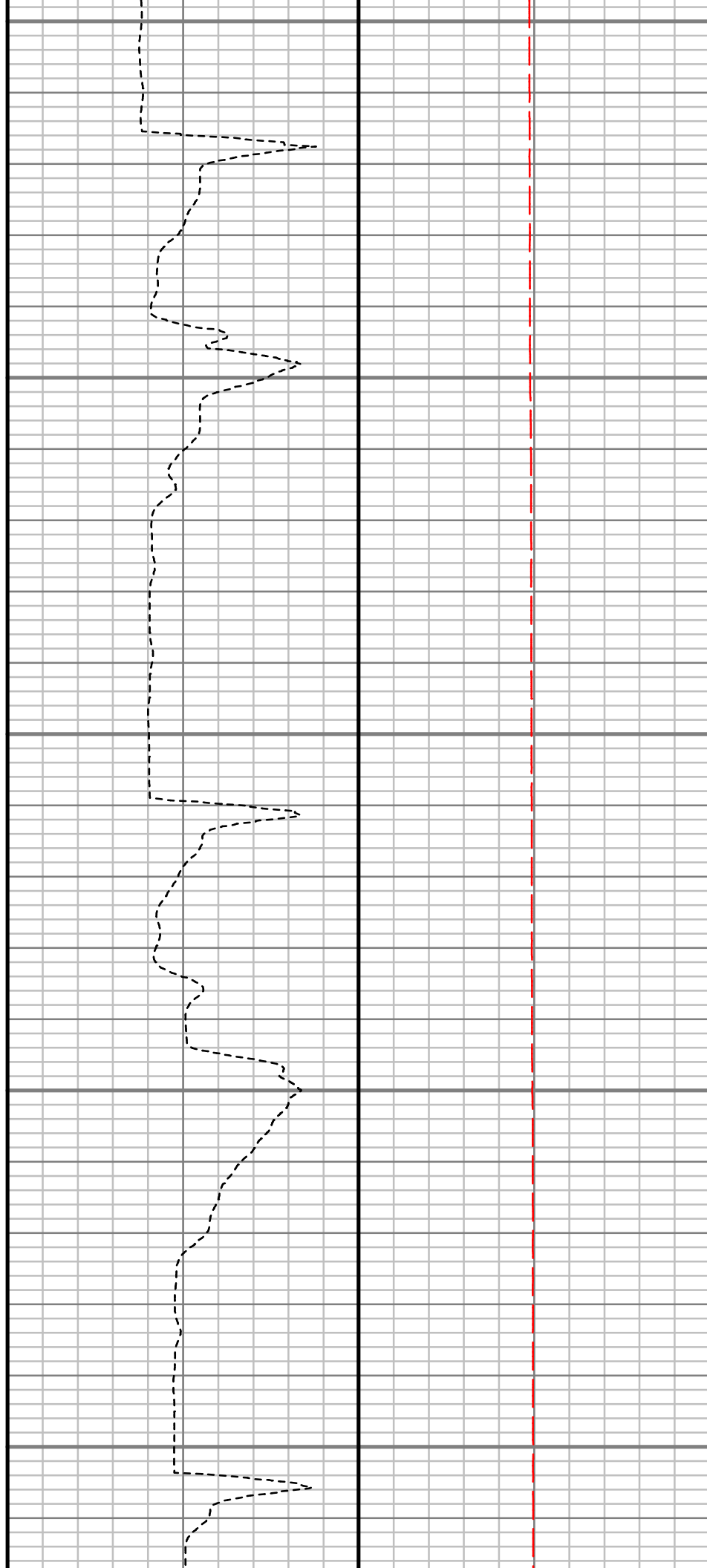
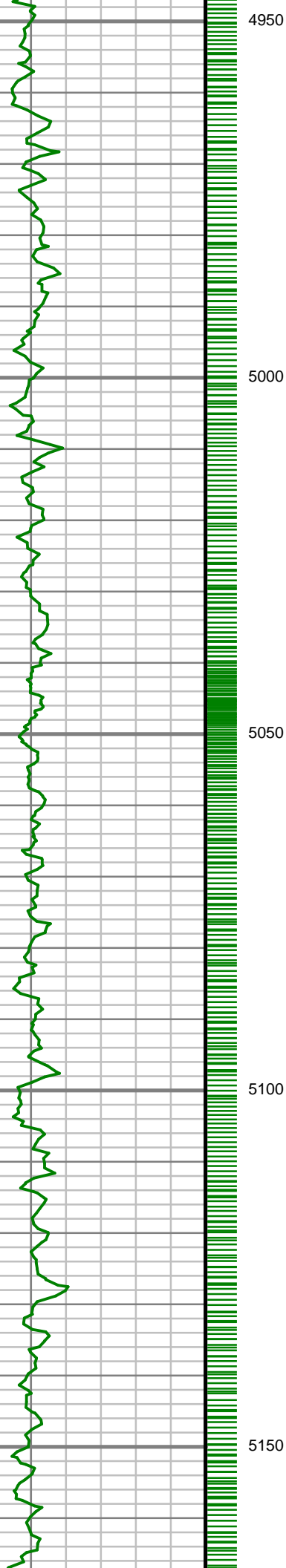
4450

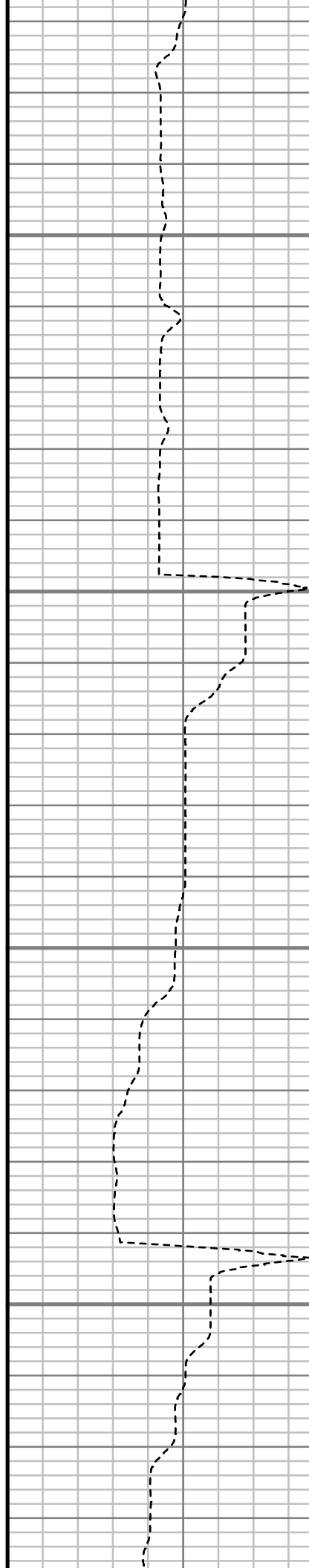
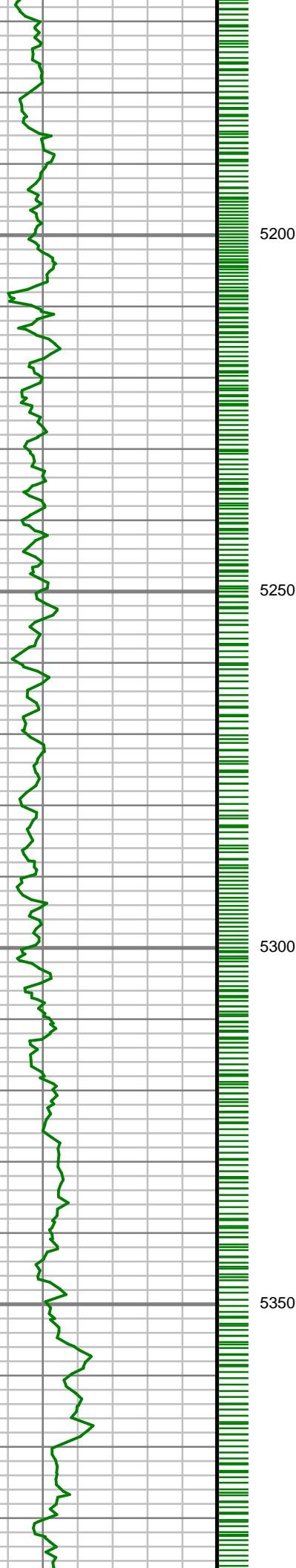
4500

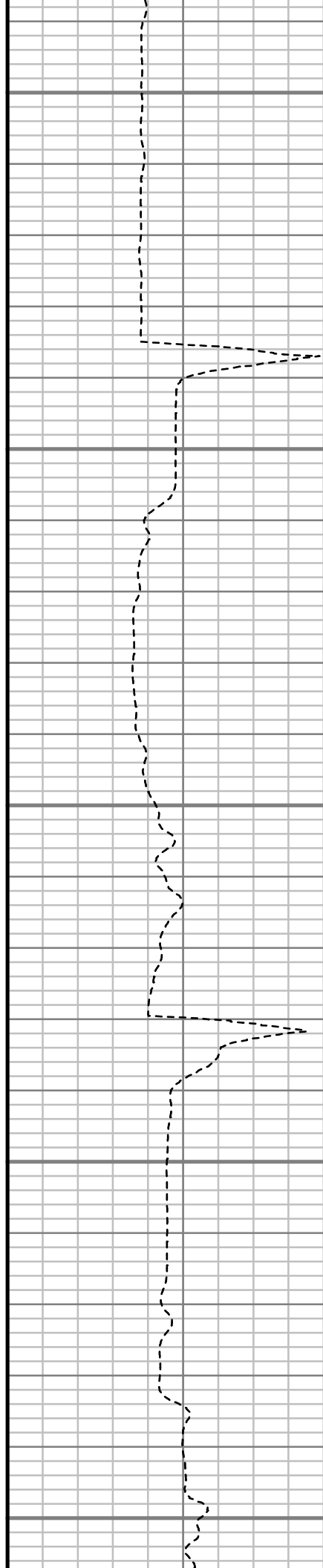
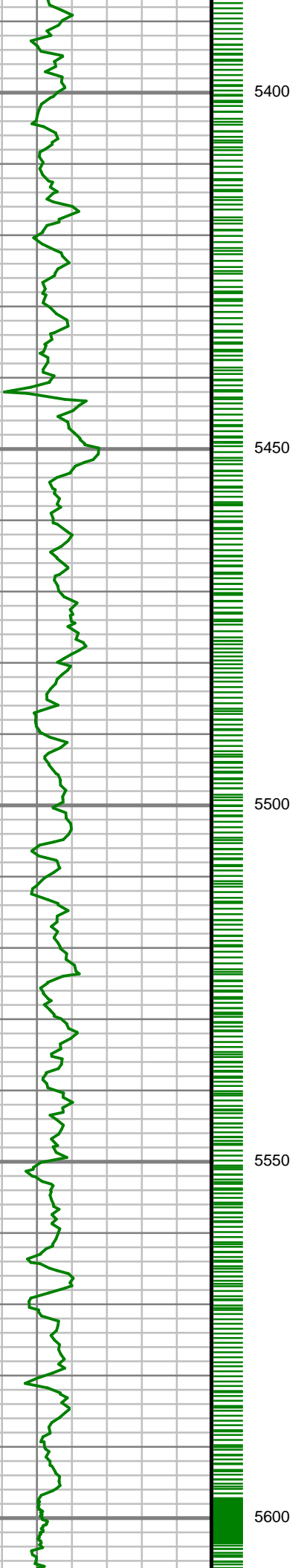


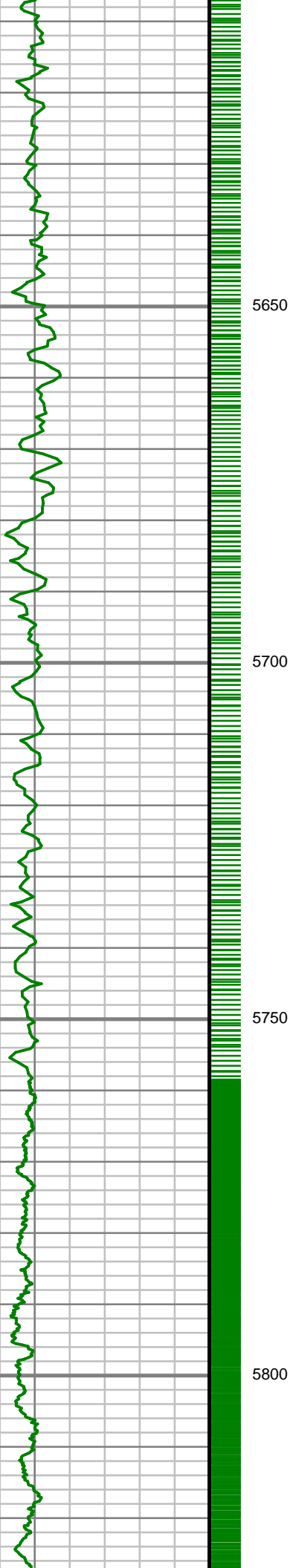










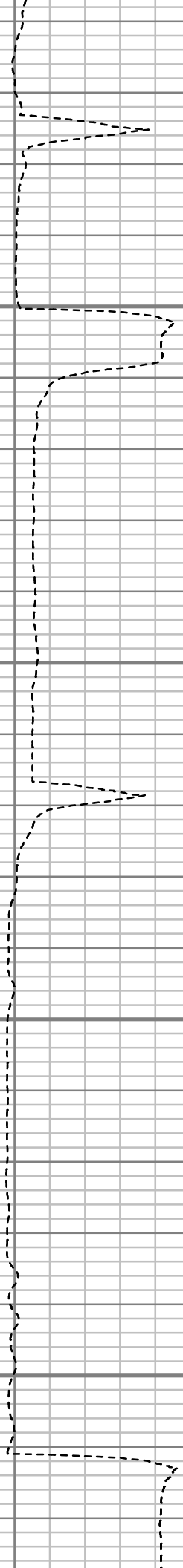


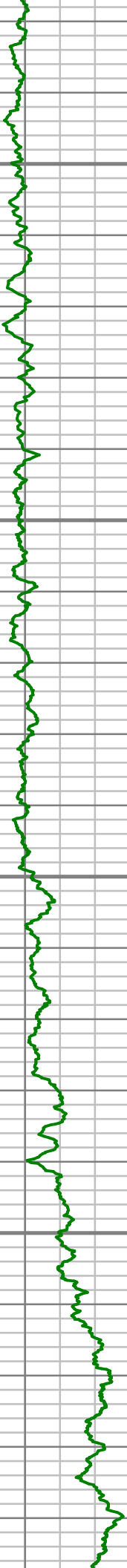
5650

5700

5750

5800



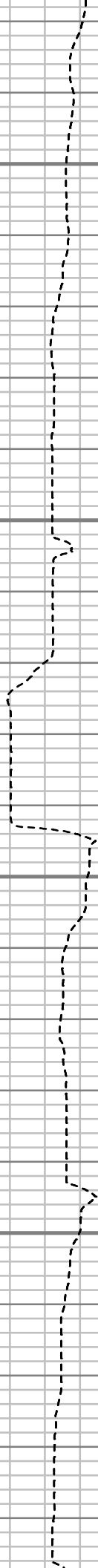


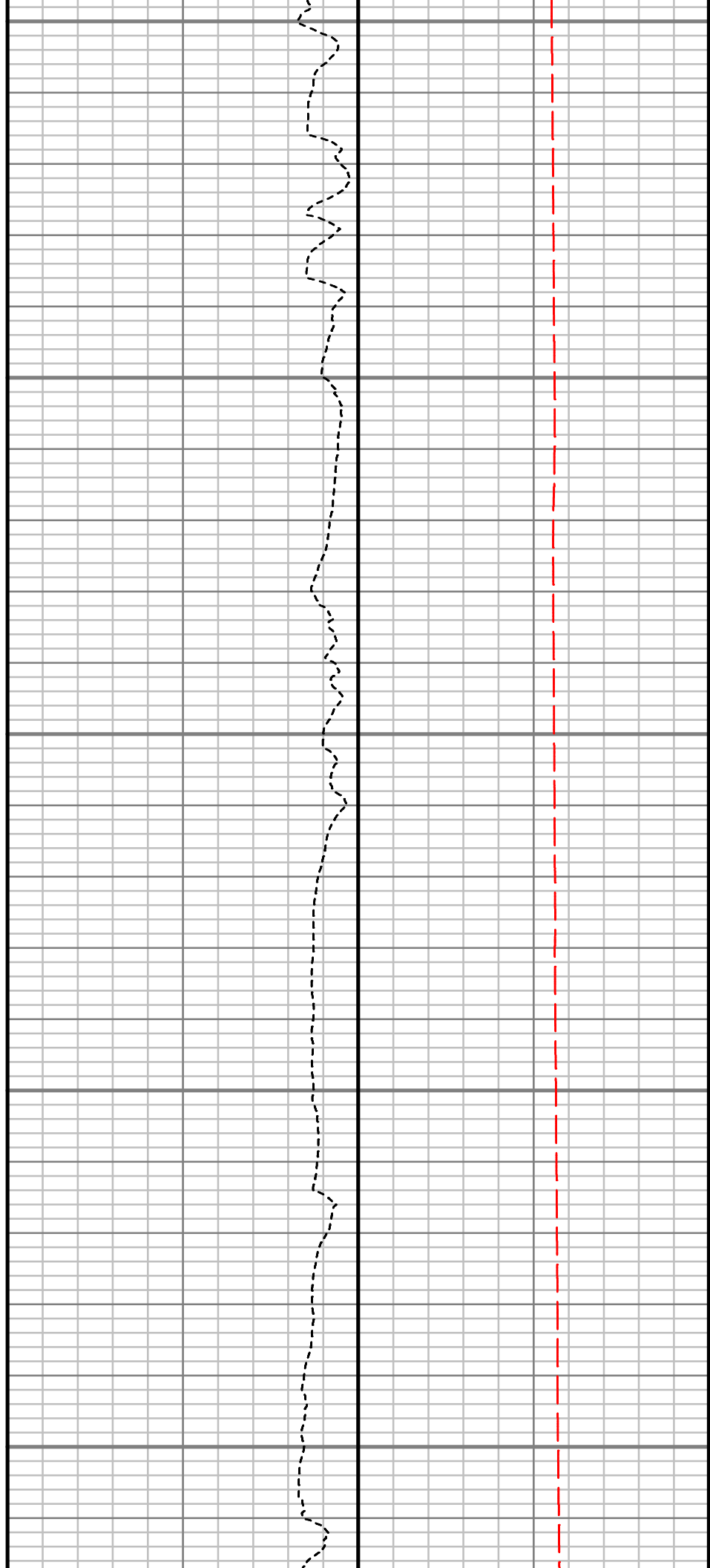
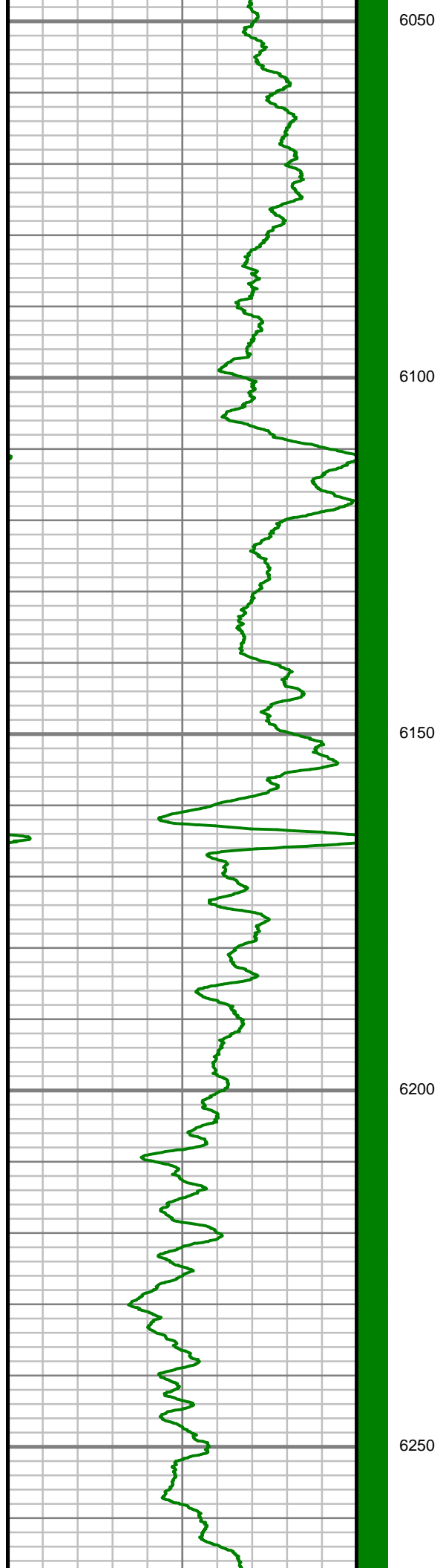
5850

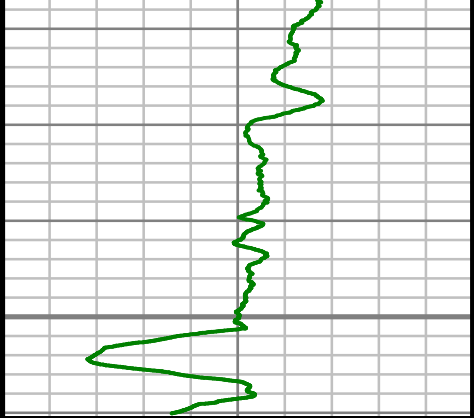
5900

5950

6000





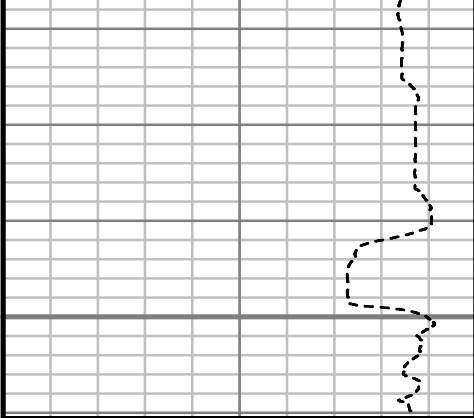


Gamma Ray (GR)

0 Unit = aapi 200

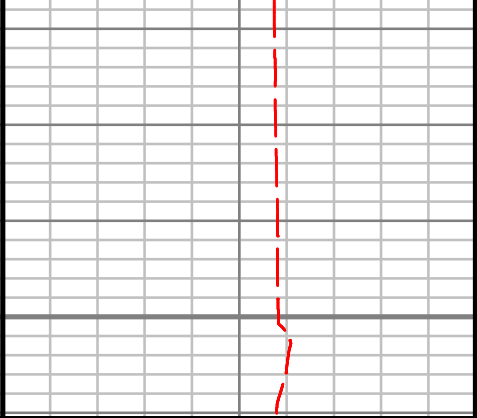
6300

TRUE VERTICAL DEPTH
1:240 (ft)



Rate of Penetration (ROP)

1000 Unit = ft/hr 0



Tool Temperature (T-TEMP)

0 Unit = °F 300

SURVEY REPORT

ANSCHUTZ EQUUS FARMS 4-62-28-6457CB

ANSCHUTZ EQUUS FARMS 4-62-28-6457C

CUSTOMER HIGH POINT RESOURCES
PROJECT ANSCHUTZ EQUUS FARMS
FIELD WATTENBERG

WELL INFORMATION

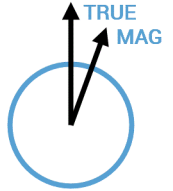
Lat/Long 40° 16' 34.769" N, 104° 20' 12.401" W
Northing 1,345,635.24 ft
Easting 3,324,551.08 ft
UWI 05-123-43721

MAP INFORMATION

North Reference True North
Grid Correction
System US State Plane 1983
Datum North American Datum 1983 (GRS 1980)
Map Zone Colorado North: 0501

VERTICAL SECTION REFERENCE

+N/-S 0 ft
+E/-W 0 ft
Proposal Direction 89.55°
Calculation Method Minimum Curvature



GEOMAGNETIC REFERENCE INFORMATION

Local Gravity: 999.087 mG [computed]

MD	MODEL	DATE	DECLINATION	MAG TO TRUE
0-16260 ft	HDGM2018	23 Mar 2018	8.22°	add 8.22°

WELL NOTES

OPERATORS

A. CARTER, D. GEYER, G. SAKOU, J. PARISE, M. SMITH

MD ft	Inc deg	Azim deg	TVD ft	VS ft	+N/-S ft	+E/-W ft	DLS °/100ft
0.00	0.00	0.00	0.00	0.00	0.00	0.00	Invalid
116.00	0.10	296.50	116.00	-0.09	0.05	-0.09	0.09
211.00	0.30	310.30	211.00	-0.35	0.24	-0.35	0.22
306.00	0.20	322.30	306.00	-0.64	0.54	-0.65	0.12
401.00	0.30	333.80	401.00	-0.85	0.89	-0.86	0.12
496.00	0.20	253.80	496.00	-1.12	1.07	-1.13	0.35
592.00	0.70	260.30	591.99	-1.86	0.92	-1.86	0.52
687.00	0.60	313.80	686.99	-2.79	1.17	-2.80	0.62
767.00	0.40	247.40	766.99	-3.35	1.35	-3.36	0.72
879.00	0.62	245.89	878.98	-4.26	0.95	-4.27	0.20
971.00	3.01	328.16	970.94	-5.98	2.80	-6.00	3.25
1062.00	4.69	330.98	1061.73	-9.01	8.08	-9.07	1.85
1153.00	6.48	327.33	1152.29	-13.52	15.66	-13.64	2.00
1245.00	7.59	324.64	1243.60	-19.76	24.98	-19.96	1.26
1337.00	9.24	324.67	1334.61	-27.46	35.96	-27.75	1.79
1428.00	12.12	322.96	1424.02	-37.33	49.54	-37.73	3.19
1519.00	12.19	318.66	1512.98	-49.32	64.38	-49.83	1.00
1610.00	11.85	318.13	1601.99	-61.78	78.55	-62.41	0.40
1701.00	12.25	314.88	1690.99	-74.75	92.32	-75.48	0.87
1793.00	12.44	312.81	1780.86	-88.82	105.94	-89.67	0.53

MD ft	Inc deg	Azim deg	TVD ft	VS ft	+N/-S ft	+E/-W ft	DLS °/100ft
1884.00	12.19	311.41	1869.76	-103.12	118.95	-104.07	0.43
1975.00	13.65	310.49	1958.46	-118.39	132.28	-119.44	1.62
2067.00	13.97	312.41	2047.80	-134.73	146.82	-135.90	0.61
2158.00	13.83	311.74	2136.13	-150.83	161.46	-152.12	0.24
2249.00	14.60	312.98	2224.35	-167.22	176.52	-168.63	0.92
2340.00	14.40	314.01	2312.45	-183.63	192.20	-185.16	0.36
2433.00	14.30	316.62	2402.55	-199.70	208.59	-201.37	0.70
2528.00	13.66	316.10	2494.73	-215.41	225.20	-217.21	0.69
2621.00	13.38	313.71	2585.16	-230.68	240.55	-232.60	0.67
2716.00	13.27	312.92	2677.60	-246.49	255.57	-248.53	0.22
2810.00	12.54	311.44	2769.22	-261.94	269.67	-264.09	0.85
2904.00	12.64	308.30	2860.96	-277.56	282.81	-279.81	0.74
2998.00	12.38	301.61	2952.73	-294.12	294.46	-296.47	1.57
3092.00	12.32	296.69	3044.56	-311.58	304.25	-314.01	1.12
3186.00	11.99	294.55	3136.45	-329.36	312.81	-331.85	0.60
3281.00	10.92	292.45	3229.56	-346.59	320.34	-349.14	1.21
3374.00	10.00	287.95	3321.02	-362.36	326.19	-364.96	1.32
3468.00	9.44	287.04	3413.67	-377.45	330.96	-380.09	0.62
3562.00	10.06	287.58	3506.31	-392.60	335.70	-395.28	0.67
3656.00	9.53	284.84	3598.94	-407.92	340.17	-410.63	0.75

MD ft	Inc deg	Azim deg	TVD ft	VS ft	+N/-S ft	+E/-W ft	DLS °/100ft
3750.00	9.73	291.58	3691.62	-422.79	345.09	-425.55	1.22
3844.00	9.36	296.62	3784.32	-436.96	351.43	-439.77	0.97
3939.00	8.93	294.41	3878.11	-450.53	357.94	-453.38	0.58
4033.00	6.80	293.28	3971.22	-462.24	363.16	-465.14	2.27
4126.00	6.41	296.91	4063.61	-471.89	367.68	-474.82	0.61
4221.00	5.75	298.95	4158.07	-480.75	372.39	-483.72	0.74
4315.00	4.46	306.31	4251.70	-487.78	376.83	-490.79	1.53
4409.00	4.29	303.34	4345.42	-493.64	380.93	-496.68	0.30
4503.00	3.35	315.22	4439.21	-498.48	384.82	-501.55	1.31
4597.00	1.09	253.94	4533.15	-501.26	386.52	-504.34	3.17
4691.00	0.97	236.87	4627.13	-502.79	385.83	-505.87	0.35
4785.00	0.72	237.38	4721.12	-503.96	385.08	-507.03	0.26
4878.00	1.01	283.58	4814.11	-505.25	384.96	-508.32	0.78
4972.00	0.95	294.43	4908.10	-506.75	385.48	-509.83	0.21
5066.00	0.74	279.13	5002.09	-508.06	385.90	-511.14	0.32
5160.00	0.26	354.56	5096.09	-508.68	386.21	-511.76	0.77
5254.00	0.41	348.68	5190.08	-508.76	386.75	-511.85	0.16
5348.00	0.63	335.14	5284.08	-509.04	387.54	-512.13	0.27
5443.00	0.60	349.74	5379.07	-509.34	388.51	-512.44	0.17
5536.00	0.73	340.48	5472.07	-509.61	389.55	-512.72	0.18

MD ft	Inc deg	Azim deg	TVD ft	VS ft	+N/-S ft	+E/-W ft	DLS °/100ft
5630.00	0.36	316.77	5566.06	-510.01	390.33	-513.13	0.45
5723.00	1.40	57.05	5659.05	-509.26	391.16	-512.38	1.62
5817.00	1.31	80.52	5753.03	-507.23	391.96	-510.36	0.59
5911.00	7.40	85.85	5846.71	-500.12	392.58	-503.26	6.49
6006.00	13.99	82.18	5940.01	-482.61	394.58	-485.76	6.96
6099.00	25.77	92.33	6027.34	-451.16	395.29	-454.31	13.15
6193.00	35.60	99.08	6108.11	-403.64	390.13	-406.75	11.07
6287.00	47.12	103.91	6178.56	-343.07	377.49	-346.08	12.70
6381.00	58.89	98.84	6235.05	-269.71	362.97	-272.60	13.24
6475.00	73.38	99.84	6272.98	-185.23	349.01	-188.01	15.44
6569.00	79.64	105.41	6294.91	-96.29	329.00	-98.91	8.81
6614.00	83.41	102.49	6301.54	-53.19	318.27	-55.72	10.56
6765.00	90.13	100.73	6310.03	94.15	287.96	91.86	4.60
6858.00	91.54	99.26	6308.67	185.59	271.83	183.44	2.19
6953.00	90.10	99.15	6307.31	279.23	256.63	277.20	1.52
7047.00	90.27	97.52	6307.00	372.12	243.01	370.21	1.75
7141.00	90.87	97.25	6306.07	465.24	230.93	463.42	0.70
7235.00	92.02	97.89	6303.70	558.29	218.55	556.57	1.40
7329.00	91.24	94.51	6301.03	651.60	208.41	649.97	3.69
7423.00	90.30	93.51	6299.76	745.31	201.84	743.73	1.46

MD ft	Inc deg	Azim deg	TVD ft	VS ft	+N/-S ft	+E/-W ft	DLS °/100ft
7517.00	90.94	92.65	6298.74	839.12	196.79	837.59	1.14
7611.00	90.91	94.66	6297.23	932.86	190.80	931.38	2.14
7705.00	89.50	91.67	6296.90	1026.66	185.61	1025.22	3.51
7798.00	89.63	88.78	6297.61	1119.64	185.24	1118.21	3.11
7892.00	89.50	88.52	6298.32	1213.63	187.45	1212.18	0.32
7986.00	90.17	87.95	6298.60	1307.60	190.36	1306.13	0.94
8080.00	91.01	89.73	6297.63	1401.59	192.26	1400.10	2.10
8174.00	91.74	89.34	6295.38	1495.56	193.02	1494.07	0.89
8268.00	89.26	91.80	6294.55	1589.53	192.09	1588.05	3.72
8361.00	89.87	91.55	6295.26	1682.46	189.36	1681.01	0.70
8455.00	89.93	91.79	6295.43	1776.39	186.62	1774.97	0.26
8549.00	91.88	89.37	6293.94	1870.35	185.66	1868.94	3.30
8643.00	90.13	89.49	6292.29	1964.34	186.59	1962.92	1.86
8737.00	91.58	90.52	6290.88	2058.32	186.59	2056.90	1.89
8831.00	91.34	88.99	6288.49	2152.28	186.99	2150.87	1.64
8925.00	92.39	87.25	6285.43	2246.20	190.08	2244.76	2.16
9019.00	91.95	89.82	6281.88	2340.11	192.48	2338.66	2.77
9113.00	91.11	89.97	6279.37	2434.07	192.65	2432.62	0.91
9207.00	88.89	89.37	6279.37	2528.07	193.20	2526.61	2.44
9300.00	89.93	90.34	6280.32	2621.06	193.44	2619.61	1.53

MD ft	Inc deg	Azim deg	TVD ft	VS ft	+N/-S ft	+E/-W ft	DLS °/100ft
9394.00	89.33	87.66	6280.93	2715.04	195.08	2713.58	2.92
9488.00	91.31	89.52	6280.41	2809.02	197.39	2807.54	2.89
9581.00	90.00	92.44	6279.35	2901.97	195.80	2900.51	3.44
9674.00	90.54	92.45	6278.91	2994.85	191.83	2993.42	0.58
9768.00	90.37	90.67	6278.17	3088.79	189.27	3087.38	1.90
9862.00	90.30	89.99	6277.62	3182.78	188.73	3181.38	0.73
9955.00	90.47	88.29	6276.99	3275.77	190.12	3274.36	1.83
10049.00	90.40	86.75	6276.27	3369.71	194.19	3368.27	1.65
10142.00	90.54	86.87	6275.51	3462.60	199.37	3461.12	0.20
10237.00	90.94	88.46	6274.29	3557.53	203.24	3556.03	1.72
10331.00	89.09	87.79	6274.26	3651.50	206.31	3649.98	2.09
10422.00	88.83	90.18	6275.91	3742.47	207.93	3740.94	2.64
10513.00	89.73	90.72	6277.06	3833.45	207.21	3831.93	1.16
10604.00	91.68	91.49	6275.94	3924.41	205.46	3922.90	2.30
10695.00	90.44	91.34	6274.26	4015.34	203.22	4013.86	1.37
10786.00	90.44	91.16	6273.57	4106.30	201.24	4104.83	0.20
10877.00	90.13	89.84	6273.11	4197.28	200.44	4195.83	1.48
10968.00	90.23	89.83	6272.82	4288.28	200.71	4286.82	0.11
11059.00	90.34	89.39	6272.37	4379.28	201.33	4377.82	0.49
11150.00	90.13	88.60	6271.99	4470.28	202.92	4468.81	0.89

MD ft	Inc deg	Azim deg	TVD ft	VS ft	+N/-S ft	+E/-W ft	DLS °/100ft
11241.00	90.47	89.97	6271.51	4561.27	204.06	4559.79	1.54
11333.00	89.73	89.43	6271.35	4653.27	204.55	4651.79	0.99
11424.00	92.72	90.37	6269.41	4744.24	204.71	4742.76	3.44
11516.00	93.39	90.09	6264.50	4836.10	204.34	4834.63	0.79
11607.00	91.98	90.10	6260.24	4926.99	204.19	4925.53	1.55
11698.00	92.42	88.76	6256.75	5017.92	205.09	5016.45	1.54
11789.00	90.70	89.32	6254.27	5108.88	206.61	5107.40	1.98
11881.00	90.67	89.38	6253.16	5200.87	207.66	5199.39	0.07
11972.00	90.10	87.83	6252.55	5291.86	209.88	5290.36	1.81
12063.00	90.54	88.90	6252.04	5382.83	212.47	5381.32	1.27
12154.00	90.74	90.13	6251.03	5473.83	213.25	5472.31	1.37
12246.00	90.50	91.12	6250.04	5565.80	212.25	5564.29	1.11
12337.00	90.23	91.68	6249.45	5656.75	210.03	5655.26	0.69
12428.00	90.60	92.40	6248.78	5747.66	206.78	5746.20	0.89
12519.00	90.67	90.69	6247.77	5838.60	204.32	5837.16	1.88
12610.00	90.44	87.28	6246.89	5929.58	205.93	5928.13	3.76
12701.00	90.87	90.15	6245.85	6020.55	207.96	6019.09	3.19
12793.00	91.07	90.51	6244.29	6112.53	207.43	6111.08	0.44
12883.00	90.64	87.34	6242.95	6202.50	209.12	6201.04	3.55
12975.00	90.90	91.68	6241.71	6294.47	209.91	6293.00	4.72

MD ft	Inc deg	Azim deg	TVD ft	VS ft	+N/-S ft	+E/-W ft	DLS °/100ft
13066.00	90.81	90.75	6240.35	6385.42	207.98	6383.97	1.02
13157.00	91.11	92.92	6238.83	6476.33	205.07	6474.91	2.40
13248.00	90.81	92.46	6237.32	6567.18	200.80	6565.79	0.60
13340.00	90.24	89.52	6236.48	6659.14	199.20	6657.77	3.26
13431.00	89.26	88.03	6236.88	6750.13	201.15	6748.74	1.95
13523.00	89.87	87.01	6237.58	6842.06	205.12	6840.65	1.29
13614.00	90.91	85.54	6236.97	6932.91	211.03	6931.45	1.99
13705.00	91.11	87.63	6235.37	7023.77	216.46	7022.27	2.31
13796.00	91.27	87.35	6233.47	7114.69	220.45	7113.16	0.36
13888.00	91.44	87.15	6231.29	7206.59	224.87	7205.03	0.28
13979.00	91.81	88.33	6228.71	7297.51	228.46	7295.92	1.36
14070.00	93.02	89.16	6224.87	7388.42	230.45	7386.82	1.61
14161.00	93.48	89.64	6219.71	7479.27	231.40	7477.67	0.73
14252.00	90.77	88.46	6216.33	7570.19	232.91	7568.58	3.25
14343.00	90.80	88.24	6215.08	7661.16	235.53	7659.53	0.25
14435.00	88.96	87.65	6215.27	7753.12	238.83	7751.47	2.10
14526.00	88.96	87.30	6216.93	7844.05	242.84	7842.37	0.39
14617.00	88.93	87.28	6218.60	7934.96	247.14	7933.25	0.04
14708.00	89.03	87.54	6220.22	8025.88	251.25	8024.14	0.30
14799.00	88.05	88.19	6222.54	8116.81	254.64	8115.05	1.29

MD ft	Inc deg	Azim deg	TVD ft	VS ft	+N/-S ft	+E/-W ft	DLS °/100ft
14891.00	87.25	89.95	6226.31	8208.73	256.13	8206.95	2.10
14982.00	88.43	90.38	6229.74	8299.66	255.87	8297.89	1.37
15073.00	87.89	89.95	6232.67	8390.61	255.61	8388.84	0.76
15163.00	89.56	91.22	6234.67	8480.56	254.70	8478.81	2.34
15255.00	89.50	91.16	6235.42	8572.52	252.78	8570.78	0.10
15346.00	91.07	90.90	6234.97	8663.49	251.15	8661.77	1.76
15438.00	91.27	91.31	6233.09	8755.43	249.38	8753.73	0.50
15529.00	91.24	91.59	6231.09	8846.36	247.08	8844.68	0.31
15621.00	91.04	90.80	6229.26	8938.30	245.17	8936.64	0.89
15711.00	89.97	89.66	6228.47	9028.29	244.81	9026.63	1.73
15803.00	90.33	88.19	6228.23	9120.28	246.54	9118.61	1.65
15896.00	90.80	87.96	6227.31	9213.25	249.67	9211.56	0.56
15990.00	90.87	87.18	6225.94	9307.18	253.66	9305.46	0.83
16084.00	90.27	86.09	6225.00	9401.05	259.17	9399.29	1.32
16178.00	90.97	86.40	6223.99	9494.89	265.32	9493.08	0.82
16260.00	90.64	84.83	6222.83	9576.69	271.59	9574.83	1.96

5" = 100' TVD