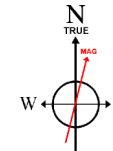


ENERPLUS RESOURCES USA CORPORATION

Location: COLORADO Slot: SLOT#01 MAPLE 8-67-36-25C (206'FSL & 1909'FWL, SEC.36)
 Field: WELD COUNTY (NAD83/TRUE NORTH) Well: MAPLE 8-67-36-25C PILOT HOLE
 Facility: SEC.36-T08N-R67W Wellbore: MAPLE 8-67-36-25C PILOT HOLE PWB

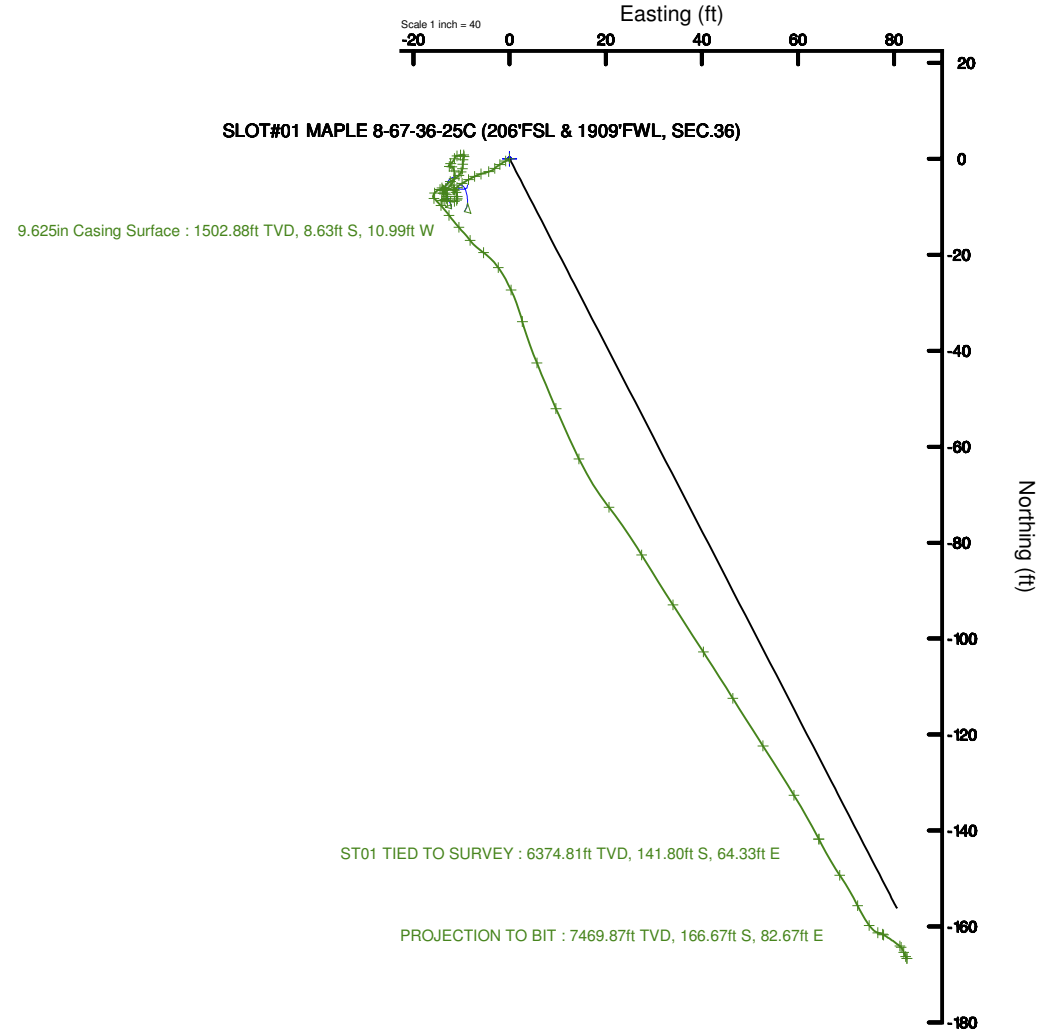
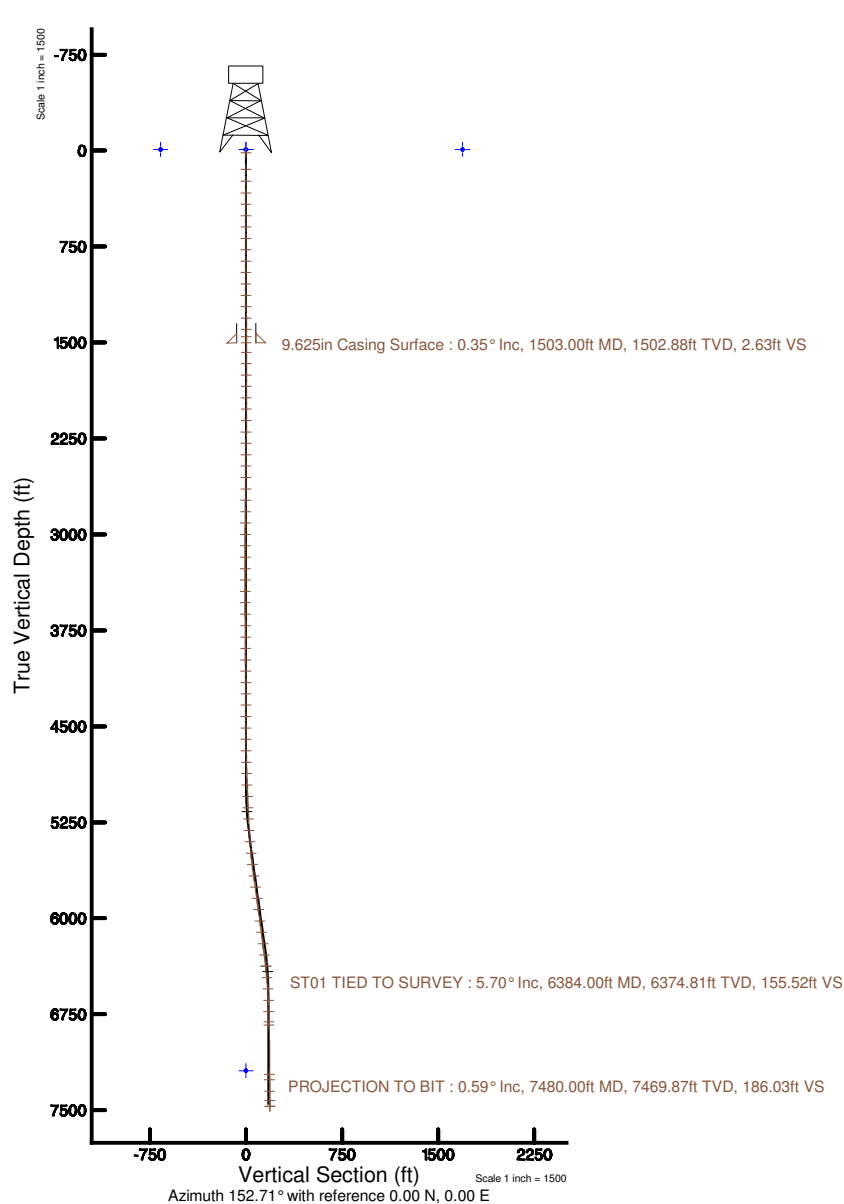
Plot reference wellpath is MAPLE 8-67-36-25C PILOT HOLE (REV-B.0) PWP	Grid System: NAD83 / Lambert Colorado SP, Northern Zone (501), US feet
True vertical depths are referenced to RIQ (16KB) (RKB)	North Reference: True north
Measured depths are referenced to RIQ (16KB) (RKB)	Scale: True distance
RIQ (16KB) (RKB) to Mean Sea Level: 5196 feet	Depths are in feet
Mean Sea Level to Mud line (At Slot: SLOT#01 MAPLE 8-67-36-25C (206'FSL & 1909'FWL, SEC.36)): 0 feet	Created by: cantryat on 2017-07-25
Coordinates are in feet referenced to Slot	Database: Denver

enerPLUS



BGGM (1900.0 to 2018.0) Dip: 67.03° Field: 52515.7 nT
 Magnetic North is 8.44 degrees East of True North (at 4/25/2017)

To correct azimuth from Magnetic to True add 8.44 degrees





Actual Wellpath Report

MAPLE 8-67-36-25C AWP

Page n of nn



REFERENCE WELLPATH IDENTIFICATION			
Operator	ENERPLUS RESOURCES USA CORPORATION	Slot	SLOT#01 MAPLE 8-67-36-25C (206'FSL & 1909'FWL, SEC.36)
Area	COLORADO	Well	MAPLE 8-67-36-25C PILOT HOLE
Field	WELD COUNTY (NAD83/TRUE NORTH)	Wellbore	MAPLE 8-67-36-25C AWB
Facility	SEC.36-T08N-R67W		

REPORT SETUP INFORMATION			
Projection System	NAD83 / Lambert Colorado SP, Northern Zone (501), US feet	Software System	WellArchitect® 5.1
North Reference	True	User	Cantryat
Scale	0.999977	Report Generated	7/25/2017 at 2:56:07 PM
Convergence at slot	0.42° East	Database/Source file	Denver/MAPLE_8-67-36-25C_AWP.xml

WELLPATH LOCATION						
	Local coordinates		Grid coordinates		Geographic coordinates	
	North[ft]	East[ft]	Easting[US ft]	Northing[US ft]	Latitude	Longitude
Slot Location	0.00	0.00	3182148.46	1466120.30	40°36'39.773"N	104°50'38.191"W
Facility Reference Pt			3182148.46	1466120.30	40°36'39.773"N	104°50'38.191"W
Field Reference Pt			3206754.66	1456523.33	40°35'03.023"N	104°45'20.196"W

WELLPATH DATUM			
Calculation method	Minimum curvature	RIG (16'KB) (RKB) to Facility Vertical Datum	5196.00ft
Horizontal Reference Pt	Slot	RIG (16'KB) (RKB) to Mean Sea Level	5196.00ft
Vertical Reference Pt	RIG (16'KB) (RKB)	RIG (16'KB) (RKB) to Mud Line at Slot (SLOT#01 MAPLE 8-67-36-25C (206'FSL & 1909'FWL, SEC.36))	5196.00ft
MD Reference Pt	RIG (16'KB) (RKB)	Section Origin	N 0.00, E 0.00 ft
Field Vertical Reference	Mean Sea Level	Section Azimuth	152.71°



Actual Wellpath Report

MAPLE 8-67-36-25C AWP

Page n of nn



REFERENCE WELLPATH IDENTIFICATION			
Operator	ENERPLUS RESOURCES USA CORPORATION	Slot	SLOT#01 MAPLE 8-67-36-25C (206'FSL & 1909'FWL, SEC.36)
Area	COLORADO	Well	MAPLE 8-67-36-25C PILOT HOLE
Field	WELD COUNTY (NAD83/TRUE NORTH)	Wellbore	MAPLE 8-67-36-25C AWB
Facility	SEC.36-T08N-R67W		

WELLPATH DATA (84 stations) † = interpolated/extrapolated station								
MD [ft]	Inclination [°]	Azimuth [°]	TVD [ft]	Vert Sect [ft]	North [ft]	East [ft]	DLS [°/100ft]	Comments
0.00†	0.000	240.390	0.00	0.00	0.00	0.00	0.00	
16.00	0.000	240.390	16.00	0.00	0.00	0.00	0.00	
147.00	0.800	240.390	147.00	0.04	-0.45	-0.80	0.61	
239.00	0.960	238.450	238.98	0.12	-1.17	-2.01	0.18	
331.00	0.770	224.790	330.97	0.37	-2.01	-3.10	0.30	
419.00	1.110	252.880	418.86	0.40	-2.69	-4.33	0.64	
508.00	1.020	254.060	507.95	0.09	-3.16	-5.92	0.10	
597.00	0.810	243.160	596.94	-0.07	-3.66	-7.24	0.31	
686.00	1.060	241.120	685.92	-0.05	-4.34	-8.52	0.28	
775.00	0.930	238.880	774.91	0.02	-5.11	-9.86	0.15	
864.00	0.930	222.380	863.90	0.32	-6.02	-10.97	0.30	
953.00	0.170	332.870	952.90	0.44	-6.43	-11.52	1.13	
1042.00	0.200	237.500	1041.90	0.32	-6.40	-11.71	0.31	
1131.00	0.170	84.050	1130.90	0.38	-6.47	-11.71	0.40	
1220.00	0.190	125.180	1219.89	0.56	-6.54	-11.45	0.14	
1309.00	0.550	150.840	1308.89	1.12	-7.00	-11.13	0.44	
1398.00	0.620	177.580	1397.89	1.98	-7.85	-10.90	0.31	
1455.00	0.390	182.430	1454.89	2.43	-8.35	-10.89	0.41	
1576.00	0.540	258.980	1575.88	2.63	-8.87	-11.47	0.49	
1665.00	0.490	286.410	1664.88	2.25	-8.85	-12.25	0.28	
1754.00	0.410	266.680	1753.88	1.86	-8.76	-12.93	0.19	
1843.00	0.810	274.950	1842.87	1.39	-8.72	-13.87	0.46	
1932.00	0.510	87.560	1931.87	1.22	-8.65	-14.11	1.48	
2021.00	0.310	71.750	2020.87	1.43	-8.56	-13.48	0.26	
2111.00	0.340	31.170	2110.87	1.32	-8.25	-13.11	0.25	
2199.00	0.250	4.100	2198.86	1.02	-7.84	-12.96	0.19	
2288.00	0.310	310.550	2287.86	0.64	-7.49	-13.13	0.29	
2377.00	0.310	338.150	2376.86	0.17	-7.11	-13.40	0.17	
2466.00	0.500	315.680	2465.86	-0.44	-6.61	-13.77	0.27	
2555.00	0.980	77.520	2554.86	-0.62	-6.17	-13.29	1.48	



Actual Wellpath Report

MAPLE 8-67-36-25C AWP

Page n of nn



REFERENCE WELLPATH IDENTIFICATION			
Operator	ENERPLUS RESOURCES USA CORPORATION	Slot	SLOT#01 MAPLE 8-67-36-25C (206'FSL & 1909'FWL, SEC.36)
Area	COLORADO	Well	MAPLE 8-67-36-25C PILOT HOLE
Field	WELD COUNTY (NAD83/TRUE NORTH)	Wellbore	MAPLE 8-67-36-25C AWP
Facility	SEC.36-T08N-R67W		

WELLPATH DATA (84 stations)								
MD [ft]	Inclination [°]	Azimuth [°]	TVD [ft]	Vert Sect [ft]	North [ft]	East [ft]	DLS [°/100ft]	Comments
2644.00	0.880	35.560	2643.85	-0.73	-5.45	-12.15	0.76	
2733.00	1.020	18.200	2732.83	-1.60	-4.14	-11.51	0.36	
2822.00	1.160	342.910	2821.82	-3.04	-2.52	-11.53	0.76	
2911.00	0.280	273.390	2910.81	-4.04	-1.65	-12.01	1.23	
3000.00	0.420	278.680	2999.81	-4.34	-1.59	-12.55	0.16	
3089.00	1.050	50.300	3088.80	-4.71	-1.02	-12.24	1.53	
3178.00	0.710	16.560	3177.79	-5.28	0.03	-11.46	0.68	
3267.00	0.460	85.930	3266.79	-5.54	0.59	-10.94	0.78	
3356.00	0.550	69.250	3355.79	-5.35	0.76	-10.19	0.19	
3445.00	0.320	111.750	3444.79	-5.11	0.82	-9.56	0.43	
3534.00	0.420	208.230	3533.78	-4.74	0.44	-9.48	0.62	
3623.00	0.480	188.600	3622.78	-4.25	-0.21	-9.69	0.18	
3712.00	0.720	176.870	3711.78	-3.44	-1.14	-9.72	0.30	
3802.00	0.520	198.060	3801.77	-2.64	-2.09	-9.81	0.33	
3891.00	0.400	203.600	3890.77	-2.16	-2.76	-10.06	0.14	
3980.00	0.730	221.800	3979.76	-1.76	-3.47	-10.56	0.42	
4069.00	2.070	238.310	4068.74	-1.43	-4.74	-12.31	1.56	
4158.00	1.230	186.900	4157.70	-0.52	-6.53	-13.79	1.82	
4247.00	0.400	22.630	4246.70	0.07	-7.19	-13.79	1.82	
4334.00	0.770	335.520	4333.69	-0.71	-6.38	-13.91	0.66	
4423.00	0.350	157.120	4422.69	-1.04	-6.08	-14.05	1.26	
4513.00	0.700	262.800	4512.69	-0.95	-6.41	-14.49	0.96	
4601.00	1.120	221.230	4600.68	-0.82	-7.12	-15.59	0.86	
4691.00	0.830	134.470	4690.67	0.12	-8.24	-15.71	1.51	
4780.00	1.830	137.330	4779.64	2.10	-9.74	-14.28	1.13	
4870.00	1.580	144.260	4869.60	4.72	-11.80	-12.59	0.36	
4959.00	2.570	138.090	4958.54	7.86	-14.28	-10.54	1.14	
5048.00	2.060	141.790	5047.47	11.36	-17.02	-8.21	0.60	
5137.00	2.870	125.350	5136.39	14.91	-19.57	-5.41	1.20	
5225.00	2.920	145.040	5224.28	19.09	-22.68	-2.33	1.13	



Actual Wellpath Report

MAPLE 8-67-36-25C AWP

Page n of nn



REFERENCE WELLPATH IDENTIFICATION			
Operator	ENERPLUS RESOURCES USA CORPORATION	Slot	SLOT#01 MAPLE 8-67-36-25C (206'FSL & 1909'FWL, SEC.36)
Area	COLORADO	Well	MAPLE 8-67-36-25C PILOT HOLE
Field	WELD COUNTY (NAD83/TRUE NORTH)	Wellbore	MAPLE 8-67-36-25C AWB
Facility	SEC.36-T08N-R67W		

WELLPATH DATA (84 stations)								
MD [ft]	Inclination [°]	Azimuth [°]	TVD [ft]	Vert Sect [ft]	North [ft]	East [ft]	DLS [°/100ft]	Comments
5315.00	3.910	154.610	5314.12	24.43	-27.33	0.30	1.27	
5403.00	5.240	164.400	5401.84	31.36	-33.91	2.67	1.75	
5493.00	6.430	157.770	5491.37	40.41	-42.54	5.68	1.52	
5582.00	6.890	156.900	5579.77	50.70	-52.06	9.66	0.53	
5671.00	7.980	154.240	5668.02	62.20	-62.53	14.44	1.28	
5760.00	7.440	142.030	5756.22	74.03	-72.64	20.67	1.93	
5849.00	8.140	148.630	5844.40	85.98	-82.56	27.50	1.28	
5938.00	7.730	147.280	5932.55	98.23	-92.98	34.01	0.51	
6027.00	7.320	147.240	6020.78	109.83	-102.78	40.32	0.46	
6117.00	7.310	148.010	6110.05	121.24	-112.46	46.45	0.11	
6206.00	7.820	147.170	6198.28	132.91	-122.35	52.73	0.59	
6295.00	7.870	148.740	6286.44	145.02	-132.65	59.18	0.25	
6384.00	5.700	153.240	6374.81	155.52	-141.80	64.33	2.51	ST01 TIED TO SURVEY
6473.00	5.560	146.500	6463.39	164.22	-149.34	68.70	0.76	
6562.00	3.910	154.010	6552.08	171.54	-155.67	72.41	1.98	
6651.00	2.260	142.280	6640.95	176.30	-159.78	74.81	1.98	
6740.00	0.920	100.520	6729.92	178.47	-161.30	76.59	1.90	
6819.00	0.600	119.610	6808.91	179.20	-161.62	77.57	0.51	
6844.00	0.660	120.870	6833.91	179.43	-161.76	77.81	0.25	
7229.00	0.560	128.950	7218.88	183.04	-164.08	81.18	0.03	
7273.00	0.480	134.670	7262.88	183.41	-164.35	81.48	0.22	
7362.00	1.030	162.560	7351.88	184.55	-165.37	81.98	0.73	
7434.00	0.590	143.830	7423.87	185.56	-166.29	82.39	0.71	
7480.00	0.590	143.830	7469.87	186.03	-166.67	82.67	0.00	PROJECTION TO BIT



Actual Wellpath Report

MAPLE 8-67-36-25C AWP

Page n of nn



REFERENCE WELLPATH IDENTIFICATION			
Operator	ENERPLUS RESOURCES USA CORPORATION	Slot	SLOT#01 MAPLE 8-67-36-25C (206'FSL & 1909'FWL, SEC.36)
Area	COLORADO	Well	MAPLE 8-67-36-25C PILOT HOLE
Field	WELD COUNTY (NAD83/TRUE NORTH)	Wellbore	MAPLE 8-67-36-25C AWB
Facility	SEC.36-T08N-R67W		

HOLE & CASING SECTIONS - Ref Wellbore: MAPLE 8-67-36-25C AWB Ref Wellpath: MAPLE 8-67-36-25C AWP									
String/Diameter	Start MD [ft]	End MD [ft]	Interval [ft]	Start TVD [ft]	End TVD [ft]	Start N/S [ft]	Start E/W [ft]	End N/S [ft]	End E/W [ft]
13.5in Open Hole	16.00	1510.00	1494.00	16.00	1509.88	0.00	0.00	-8.67	-11.02
9.625in Casing Surface	16.00	1503.00	1487.00	16.00	1502.88	0.00	0.00	-8.63	-10.99
8.5in Open Hole	1510.00	16977.00	15467.00	1509.88	N/A	-8.67	-11.02	N/A	N/A

TARGETS								
Name	TVD [ft]	North [ft]	East [ft]	Grid East [US ft]	Grid North [US ft]	Latitude	Longitude	Shape
SEC.25-T08N-R67W	-9.00	0.00	0.00	3182148.46	1466120.30	40°36'39.773"N	104°50'38.191"W	polygon
SEC.25-T08N-R67W NE CORNER	-9.00	10499.41	3584.86	3185655.46	1476645.68	40°38'23.518"N	104°49'51.690"W	point
SEC.25-T08N-R67W NW CORNER	-9.00	10476.26	-1709.34	3180361.71	1476583.36	40°38'23.291"N	104°51'00.364"W	point
SEC.25-T08N-R67W SE CORNER	-9.00	5162.00	3464.89	3185574.98	1471307.66	40°37'30.778"N	104°49'53.256"W	point
SEC.25-T08N-R67W SW CORNER	-9.00	5185.14	-1845.72	3180264.47	1471291.51	40°37'31.008"N	104°51'02.128"W	point
SEC.36-T08N-R67W	-9.00	0.00	0.00	3182148.46	1466120.30	40°36'39.773"N	104°50'38.191"W	polygon
SEC.36-T08N-R67W SE CORNER	-9.00	-150.25	3393.73	3185543.12	1465995.17	40°36'38.286"N	104°49'54.188"W	point
SEC.36-T08N-R67W SW CORNER	-9.00	-237.12	-1911.66	3180238.66	1465869.05	40°36'37.429"N	104°51'02.977"W	point
SEC.25/36-T08N-R67W HARDLINES (650' SETBACKS)	7191.00	0.00	0.00	3182148.46	1466120.30	40°36'39.773"N	104°50'38.191"W	polygon



Actual Wellpath Report

MAPLE 8-67-36-25C AWP

Page n of nn



REFERENCE WELLPATH IDENTIFICATION			
Operator	ENERPLUS RESOURCES USA CORPORATION	Slot	SLOT#01 MAPLE 8-67-36-25C (206'FSL & 1909'FWL, SEC.36)
Area	COLORADO	Well	MAPLE 8-67-36-25C PILOT HOLE
Field	WELD COUNTY (NAD83/TRUE NORTH)	Wellbore	MAPLE 8-67-36-25C AWB
Facility	SEC.36-T08N-R67W		

WELLPATH COMPOSITION - Ref Wellbore: MAPLE 8-67-36-25C AWB Ref Wellpath: MAPLE 8-67-36-25C AWP				
Start MD [ft]	End MD [ft]	Positional Uncertainty Model	Log Name/Comment	Wellbore
16.00	1455.00	Custom BHI NaviTrak (Standard Rotating) (Rockies 0.03Gt model)	13 1/2" SURFACE SURVEYS BHI/NAVI (STANDARD) <16 - 1455>	MAPLE 8-67-36-25C AWB
1455.00	6844.00	Custom BHI NaviTrak (Standard Rotating) (Rockies 0.03Gt model)	8 1/2" PILOT HOLE SURVEYS <1455 - 6844>	MAPLE 8-67-36-25C AWB
6844.00	7434.00	Custom BHI NaviTrak (Standard Rotating) (Rockies 0.03Gt model)	8 1/2" RAT HOLE SURVEYS <6844 - 7434>	MAPLE 8-67-36-25C AWB
7434.00	7480.00	Blind Drilling (std)	Projection to bit	MAPLE 8-67-36-25C AWB

**Actual Wellpath Report**

MAPLE 8-67-36-25C AWP

Page n of nn



REFERENCE WELLPATH IDENTIFICATION			
Operator	ENERPLUS RESOURCES USA CORPORATION	Slot	SLOT#01 MAPLE 8-67-36-25C (206'FSL & 1909'FWL, SEC.36)
Area	COLORADO	Well	MAPLE 8-67-36-25C PILOT HOLE
Field	WELD COUNTY (NAD83/TRUE NORTH)	Wellbore	MAPLE 8-67-36-25C AWB
Facility	SEC.36-T08N-R67W		

WELLPATH COMMENTS				
MD [ft]	Inclination [°]	Azimuth [°]	TVD [ft]	Comment
6384.00	5.700	153.240	6374.81	ST01 TIED TO SURVEY
7480.00	0.590	143.830	7469.87	PROJECTION TO BIT