

BAYSWATER E & P, LLC

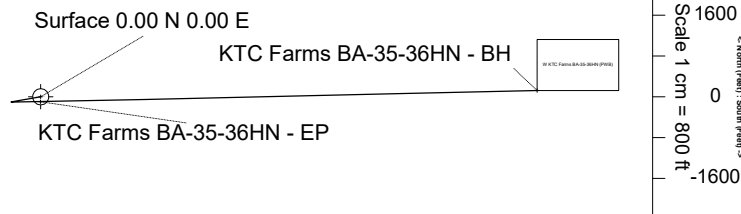
Location	Weld County, CO	Slot	KTC Farms BA-35-36HN
Field	WATTENBERG	Well	W KTC Farms BA-35-36HN
Installation	KTC Farms Pad	Wellbore	W KTC Farms BA-35-36HN (PWB)

East (Feet) ->

N

GRID

-3200 -1600 0 1600 3200 4800 6400 8000 9600 11200
Scale 1 cm = 800 ft



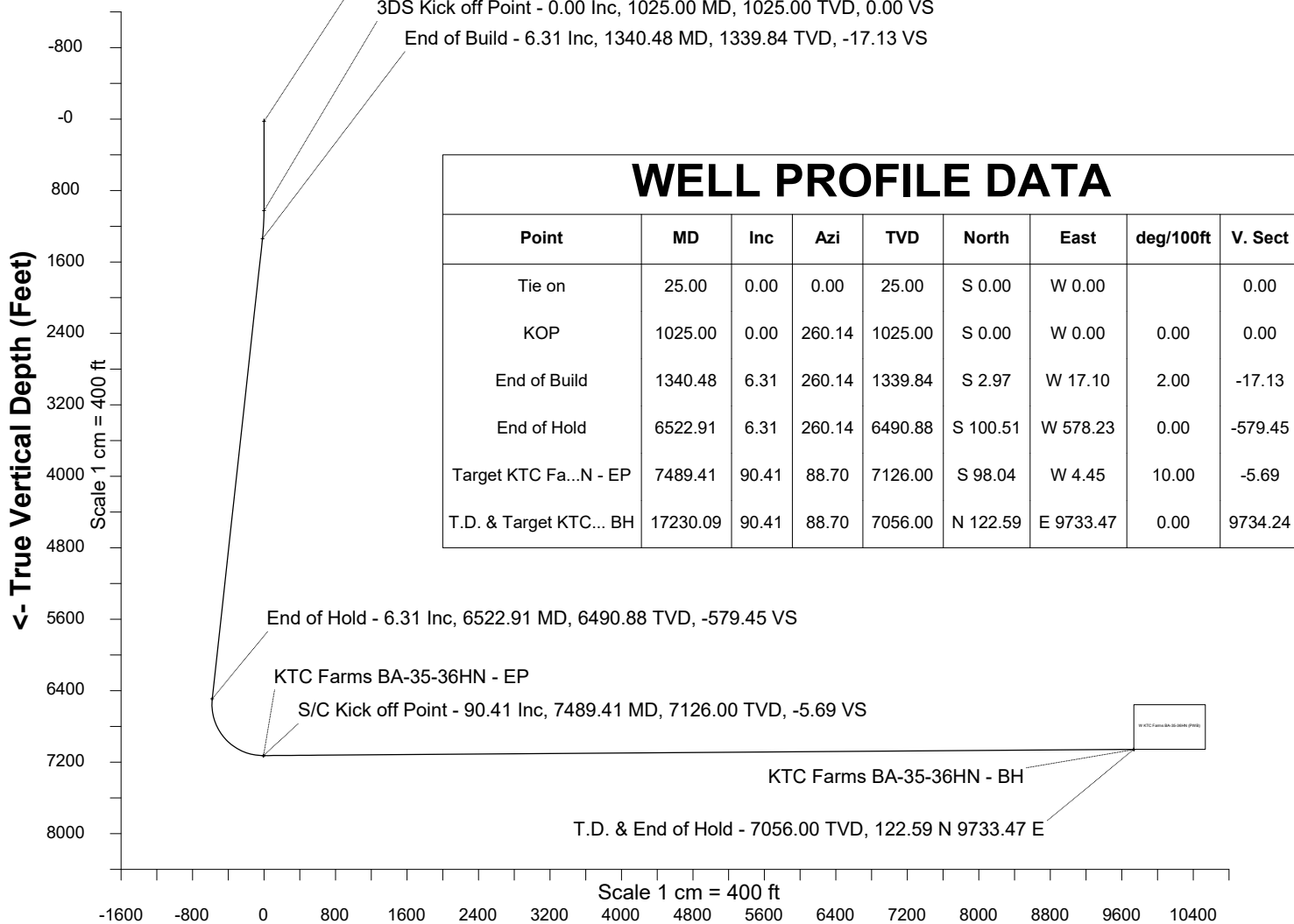
Nov-21-2017
EMM-2015 [2000.0-2020.0] Dip: 66.99 deg Field: 52425.0 nT
Lat: N40 32 17.1492 Long: W104 45 9.2160 Elev: 4861.00 ft
Magnetic North is 8.14 deg East of True North
GRID North is 0.48 deg East of True North
To correct azimuth from True to GRID subtract 0.48 deg
To correct azimuth from Magnetic to GRID add 7.66 deg

Created by admin
Date plotted 22-Nov-2017
Plot reference is W KTC Farms BA-35-36HN (PWB).
Ref wellpath is W KTC Farms BA-35-36HN (PWP#1).
Coordinates are in Feet reference KTC Farms BA-35-36HN.
True Vertical Depths are reference Rig Datum.
Measured Depths are reference Rig Datum.
Rig Datum: Planned Datum #1
Rig Datum to Mean Sea Level: 4886.00 ft.
Plot North is aligned to GRID North.

Tie on - 0.00 Inc, 25.00 MD, 25.00 TVD, 0.00 VS

3DS Kick off Point - 0.00 Inc, 1025.00 MD, 1025.00 TVD, 0.00 VS

End of Build - 6.31 Inc, 1340.48 MD, 1339.84 TVD, -17.13 VS



WELL PROFILE DATA

Point	MD	Inc	Azi	TVD	North	East	deg/100ft	V. Sect
Tie on	25.00	0.00	0.00	25.00	S 0.00	W 0.00		0.00
KOP	1025.00	0.00	260.14	1025.00	S 0.00	W 0.00	0.00	0.00
End of Build	1340.48	6.31	260.14	1339.84	S 2.97	W 17.10	2.00	-17.13
End of Hold	6522.91	6.31	260.14	6490.88	S 100.51	W 578.23	0.00	-579.45
Target KTC Fa...N - EP	7489.41	90.41	88.70	7126.00	S 98.04	W 4.45	10.00	-5.69
T.D. & Target KTC... BH	17230.09	90.41	88.70	7056.00	N 122.59	E 9733.47	0.00	9734.24

End of Hold - 6.31 Inc, 6522.91 MD, 6490.88 TVD, -579.45 VS

KTC Farms BA-35-36HN - EP

S/C Kick off Point - 90.41 Inc, 7489.41 MD, 7126.00 TVD, -5.69 VS

KTC Farms BA-35-36HN - BH

T.D. & End of Hold - 7056.00 TVD, 122.59 N 9733.47 E

Vertical Section (Feet) ->

Azimuth 89.28 with reference 0.00 N, 0.00 E from KTC Farms BA-35-36HN



SYSDRILL
Well Design Combined Report
Wellbore: W KTC Farms BA-35-36HN (PWB)



Wellhead Details

Name	Latitude	Longitude	Northing	Easting	North	East	Slot Elevation Above Ground
KTC Farms BA-35-36HN	40.53801500	-104.75255900	1439715.1753	3207743.7950	29.87S	0.53E	0.00

Declination

Date	Source	Time
Nov-21-2017	EMM-2015 [2000.0-2020.0]	10:51

Installation Details

Name	Installation Position (Latitude)	Installation Position (Longitude)	Northing	Easting	Coord System Name	North Alignment
KTC Farms Pad	40.53809700	-104.75256000	1439745.0452	3207743.2653	CO83-NF on NORTH AMERICAN DATUM 1983 datum	Grid

Summary Wellpath

MD[ft]	Inc[deg]	Azi[deg]	TVD[ft]	North[ft]	East[ft]	Dogleg [deg/100ft]	Vertical Section[ft]	Northing	Easting
25.00	0.00	0.000	25.00	0.00N	0.00E		0.00	1439715.18	3207743.80
1025.00	0.00	260.140	1025.00	0.00N	0.00E	==>	0.00	1439715.18	3207743.80
1340.48	6.31	260.140	1339.84	2.97S	17.10W	2.00	-17.13	1439712.20	3207726.70
6522.91	6.31	260.140	6490.88	100.51S	578.23W	==>	-579.45	1439614.67	3207165.59
7489.41	90.41	88.700	7126.00	98.04S	4.45W	10.00	-5.69	1439617.14	3207739.34
17230.09	90.41	88.700	7056.00	122.59N	9733.47E	==>	9734.24	1439837.76	3217476.95

Interpolated Wellpath

MD[ft]	Inc[deg]	Azi[deg]	TVD[ft]	North[ft]	East[ft]	Dogleg [deg/100ft]	Vertical Section[ft]	All Station Comments
0.00	0.00	0.000	0.00	0.00N	0.00E		0.00	Rig Datum
25.00	0.00	0.000	25.00	0.00N	0.00E	==>	0.00	Slot Datum
100.00	0.00	0.000	100.00	0.00N	0.00E	==>	0.00	
200.00	0.00	0.000	200.00	0.00N	0.00E	==>	0.00	
300.00	0.00	0.000	300.00	0.00N	0.00E	==>	0.00	
400.00	0.00	0.000	400.00	0.00N	0.00E	==>	0.00	
500.00	0.00	0.000	500.00	0.00N	0.00E	==>	0.00	
600.00	0.00	0.000	600.00	0.00N	0.00E	==>	0.00	
700.00	0.00	0.000	700.00	0.00N	0.00E	==>	0.00	
800.00	0.00	0.000	800.00	0.00N	0.00E	==>	0.00	
900.00	0.00	0.000	900.00	0.00N	0.00E	==>	0.00	
1000.00	0.00	0.000	1000.00	0.00N	0.00E	==>	0.00	
1100.00	1.50	260.140	1099.99	0.17S	0.97W	2.00	-0.97	
1200.00	3.50	260.140	1199.89	0.92S	5.26W	2.00	-5.28	
1300.00	5.50	260.140	1299.58	2.26S	12.99W	2.00	-13.02	
1400.00	6.31	260.140	1399.00	4.09S	23.54W	==>	-23.59	
1500.00	6.31	260.140	1498.40	5.97S	34.37W	==>	-34.44	
1600.00	6.31	260.140	1597.79	7.86S	45.20W	==>	-45.29	
1700.00	6.31	260.140	1697.19	9.74S	56.02W	==>	-56.14	
1800.00	6.31	260.140	1796.58	11.62S	66.85W	==>	-66.99	
1900.00	6.31	260.140	1895.97	13.50S	77.68W	==>	-77.84	
2000.00	6.31	260.140	1995.37	15.38S	88.51W	==>	-88.69	
2100.00	6.31	260.140	2094.76	17.27S	99.33W	==>	-99.54	
2200.00	6.31	260.140	2194.16	19.15S	110.16W	==>	-110.39	
2300.00	6.31	260.140	2293.55	21.03S	120.99W	==>	-121.24	
2400.00	6.31	260.140	2392.94	22.91S	131.82W	==>	-132.10	
2500.00	6.31	260.140	2492.34	24.79S	142.64W	==>	-142.95	
2600.00	6.31	260.140	2591.73	26.68S	153.47W	==>	-153.80	
2700.00	6.31	260.140	2691.13	28.56S	164.30W	==>	-164.65	
2800.00	6.31	260.140	2790.52	30.44S	175.13W	==>	-175.50	
2900.00	6.31	260.140	2889.92	32.32S	185.95W	==>	-186.35	
3000.00	6.31	260.140	2989.31	34.21S	196.78W	==>	-197.20	

All data is in Feet unless otherwise stated
Coordinates are from Slot MD's are from Rig and TVD's are from Rig (Planned Datum #1 4886.0ft above Mean Sea Level)
Vertical Section is from 0.00N 0.00E on azimuth 89.280 degrees
Bottom hole distance is 9734.24 Feet on azimuth 89.28 degrees from Wellhead
Calculation method uses Minimum Curvature method
Prepared by Microsoft
Date Printed: 22-Nov-2017



SYSDRILL
Well Design Combined Report
Wellbore: W KTC Farms BA-35-36HN (PWB)



Interpolated Wellpath								
MD[ft]	Inc[deg]	Azi[deg]	TVD[ft]	North[ft]	East[ft]	Dogleg [deg/100ft]	Vertical Section[ft]	All Station Comments
3100.00	6.31	260.140	3088.70	36.09S	207.61W	==>	-208.05	
3200.00	6.31	260.140	3188.10	37.97S	218.44W	==>	-218.90	
3300.00	6.31	260.140	3287.49	39.85S	229.27W	==>	-229.75	
3400.00	6.31	260.140	3386.89	41.73S	240.09W	==>	-240.60	
3500.00	6.31	260.140	3486.28	43.62S	250.92W	==>	-251.45	
3600.00	6.31	260.140	3585.68	45.50S	261.75W	==>	-262.30	
3700.00	6.31	260.140	3685.07	47.38S	272.58W	==>	-273.15	
3800.00	6.31	260.140	3784.46	49.26S	283.40W	==>	-284.00	
3900.00	6.31	260.140	3883.86	51.14S	294.23W	==>	-294.85	
4000.00	6.31	260.140	3983.25	53.03S	305.06W	==>	-305.70	
4100.00	6.31	260.140	4082.65	54.91S	315.89W	==>	-316.55	
4200.00	6.31	260.140	4182.04	56.79S	326.71W	==>	-327.40	
4300.00	6.31	260.140	4281.44	58.67S	337.54W	==>	-338.25	
4400.00	6.31	260.140	4380.83	60.55S	348.37W	==>	-349.10	
4500.00	6.31	260.140	4480.22	62.44S	359.20W	==>	-359.95	
4600.00	6.31	260.140	4579.62	64.32S	370.02W	==>	-370.80	
4700.00	6.31	260.140	4679.01	66.20S	380.85W	==>	-381.65	
4800.00	6.31	260.140	4778.41	68.08S	391.68W	==>	-392.51	
4900.00	6.31	260.140	4877.80	69.96S	402.51W	==>	-403.36	
5000.00	6.31	260.140	4977.20	71.85S	413.33W	==>	-414.21	
5100.00	6.31	260.140	5076.59	73.73S	424.16W	==>	-425.06	
5200.00	6.31	260.140	5175.98	75.61S	434.99W	==>	-435.91	
5300.00	6.31	260.140	5275.38	77.49S	445.82W	==>	-446.76	
5400.00	6.31	260.140	5374.77	79.37S	456.64W	==>	-457.61	
5500.00	6.31	260.140	5474.17	81.26S	467.47W	==>	-468.46	
5600.00	6.31	260.140	5573.56	83.14S	478.30W	==>	-479.31	
5700.00	6.31	260.140	5672.96	85.02S	489.13W	==>	-490.16	
5800.00	6.31	260.140	5772.35	86.90S	499.95W	==>	-501.01	
5900.00	6.31	260.140	5871.74	88.78S	510.78W	==>	-511.86	
6000.00	6.31	260.140	5971.14	90.67S	521.61W	==>	-522.71	
6100.00	6.31	260.140	6070.53	92.55S	532.44W	==>	-533.56	
6200.00	6.31	260.140	6169.93	94.43S	543.26W	==>	-544.41	
6300.00	6.31	260.140	6269.32	96.31S	554.09W	==>	-555.26	
6400.00	6.31	260.140	6368.72	98.20S	564.92W	==>	-566.11	
6500.00	6.31	260.140	6468.11	100.08S	575.75W	==>	-576.96	
6600.00	1.75	121.400	6567.84	101.85S	581.40W	10.00	-582.64	
6700.00	11.51	93.350	6667.06	103.23S	570.11W	10.00	-571.37	
6800.00	21.49	91.110	6762.82	104.17S	541.77W	10.00	-543.04	
6900.00	31.48	90.250	6852.21	104.64S	497.23W	10.00	-498.51	
7000.00	41.48	89.780	6932.52	104.62S	437.85W	10.00	-439.13	
7100.00	51.48	89.460	7001.29	104.12S	365.43W	10.00	-366.72	
7200.00	61.47	89.220	7056.45	103.16S	282.18W	10.00	-283.46	
7300.00	71.47	89.030	7096.32	101.75S	190.62W	10.00	-191.88	
7400.00	81.47	88.850	7119.68	99.95S	93.53W	10.00	-94.78	
7500.00	90.41	88.700	7125.92	97.80S	6.13E	==>	4.90	
7600.00	90.41	88.700	7125.21	95.54S	106.10E	==>	104.89	
7700.00	90.41	88.700	7124.49	93.27S	206.07E	==>	204.88	
7800.00	90.41	88.700	7123.77	91.01S	306.04E	==>	304.87	
7900.00	90.41	88.700	7123.05	88.74S	406.02E	==>	404.87	
8000.00	90.41	88.700	7122.33	86.48S	505.99E	==>	504.86	
8100.00	90.41	88.700	7121.61	84.21S	605.96E	==>	604.85	
8200.00	90.41	88.700	7120.89	81.95S	705.93E	==>	704.84	
8300.00	90.41	88.700	7120.17	79.68S	805.90E	==>	804.84	
8400.00	90.41	88.700	7119.46	77.42S	905.87E	==>	904.83	
8500.00	90.41	88.700	7118.74	75.15S	1005.85E	==>	1004.82	
8600.00	90.41	88.700	7118.02	72.89S	1105.82E	==>	1104.81	
8700.00	90.41	88.700	7117.30	70.62S	1205.79E	==>	1204.81	
8800.00	90.41	88.700	7116.58	68.36S	1305.76E	==>	1304.80	
8900.00	90.41	88.700	7115.86	66.09S	1405.73E	==>	1404.79	

All data is in Feet unless otherwise stated
Coordinates are from Slot MD's are from Rig and TVD's are from Rig (Planned Datum #1 4886.0ft above Mean Sea Level)
Vertical Section is from 0.00N 0.00E on azimuth 89.280 degrees
Bottom hole distance is 9734.24 Feet on azimuth 89.28 degrees from Wellhead
Calculation method uses Minimum Curvature method
Prepared by Microsoft
Date Printed: 22-Nov-2017



SYS DRILL
Well Design Combined Report
Wellbore: W KTC Farms BA-35-36HN (PWB)



Interpolated Wellpath								
MD[ft]	Inc[deg]	Azi[deg]	TVD[ft]	North[ft]	East[ft]	Dogleg [deg/100ft]	Vertical Section[ft]	All Station Comments
9000.00	90.41	88.700	7115.14	63.83S	1505.71E	==>	1504.78	
9100.00	90.41	88.700	7114.43	61.56S	1605.68E	==>	1604.77	
9200.00	90.41	88.700	7113.71	59.30S	1705.65E	==>	1704.77	
9300.00	90.41	88.700	7112.99	57.03S	1805.62E	==>	1804.76	
9400.00	90.41	88.700	7112.27	54.77S	1905.59E	==>	1904.75	
9500.00	90.41	88.700	7111.55	52.50S	2005.56E	==>	2004.74	
9600.00	90.41	88.700	7110.83	50.24S	2105.54E	==>	2104.74	
9700.00	90.41	88.700	7110.11	47.97S	2205.51E	==>	2204.73	
9800.00	90.41	88.700	7109.40	45.71S	2305.48E	==>	2304.72	
9900.00	90.41	88.700	7108.68	43.44S	2405.45E	==>	2404.71	
10000.00	90.41	88.700	7107.96	41.18S	2505.42E	==>	2504.71	
10100.00	90.41	88.700	7107.24	38.91S	2605.39E	==>	2604.70	
10200.00	90.41	88.700	7106.52	36.65S	2705.37E	==>	2704.69	
10300.00	90.41	88.700	7105.80	34.38S	2805.34E	==>	2804.68	
10400.00	90.41	88.700	7105.08	32.12S	2905.31E	==>	2904.68	
10500.00	90.41	88.700	7104.36	29.85S	3005.28E	==>	3004.67	
10600.00	90.41	88.700	7103.65	27.59S	3105.25E	==>	3104.66	
10700.00	90.41	88.700	7102.93	25.32S	3205.23E	==>	3204.65	
10800.00	90.41	88.700	7102.21	23.06S	3305.20E	==>	3304.64	
10900.00	90.41	88.700	7101.49	20.79S	3405.17E	==>	3404.64	
11000.00	90.41	88.700	7100.77	18.53S	3505.14E	==>	3504.63	
11100.00	90.41	88.700	7100.05	16.26S	3605.11E	==>	3604.62	
11200.00	90.41	88.700	7099.33	14.00S	3705.08E	==>	3704.61	
11300.00	90.41	88.700	7098.62	11.73S	3805.06E	==>	3804.61	
11400.00	90.41	88.700	7097.90	9.47S	3905.03E	==>	3904.60	
11500.00	90.41	88.700	7097.18	7.20S	4005.00E	==>	4004.59	
11600.00	90.41	88.700	7096.46	4.94S	4104.97E	==>	4104.58	
11700.00	90.41	88.700	7095.74	2.67S	4204.94E	==>	4204.58	
11800.00	90.41	88.700	7095.02	0.41S	4304.91E	==>	4304.57	
11900.00	90.41	88.700	7094.30	1.86N	4404.89E	==>	4404.56	
12000.00	90.41	88.700	7093.59	4.12N	4504.86E	==>	4504.55	
12100.00	90.41	88.700	7092.87	6.39N	4604.83E	==>	4604.55	
12200.00	90.41	88.700	7092.15	8.65N	4704.80E	==>	4704.54	
12300.00	90.41	88.700	7091.43	10.92N	4804.77E	==>	4804.53	
12400.00	90.41	88.700	7090.71	13.18N	4904.75E	==>	4904.52	
12500.00	90.41	88.700	7089.99	15.45N	5004.72E	==>	5004.51	
12600.00	90.41	88.700	7089.27	17.71N	5104.69E	==>	5104.51	
12700.00	90.41	88.700	7088.55	19.98N	5204.66E	==>	5204.50	
12800.00	90.41	88.700	7087.84	22.24N	5304.63E	==>	5304.49	
12900.00	90.41	88.700	7087.12	24.51N	5404.60E	==>	5404.48	
13000.00	90.41	88.700	7086.40	26.77N	5504.58E	==>	5504.48	
13100.00	90.41	88.700	7085.68	29.04N	5604.55E	==>	5604.47	
13200.00	90.41	88.700	7084.96	31.30N	5704.52E	==>	5704.46	
13300.00	90.41	88.700	7084.24	33.57N	5804.49E	==>	5804.45	
13400.00	90.41	88.700	7083.52	35.83N	5904.46E	==>	5904.45	
13500.00	90.41	88.700	7082.81	38.10N	6004.43E	==>	6004.44	
13600.00	90.41	88.700	7082.09	40.36N	6104.41E	==>	6104.43	
13700.00	90.41	88.700	7081.37	42.63N	6204.38E	==>	6204.42	
13800.00	90.41	88.700	7080.65	44.89N	6304.35E	==>	6304.42	
13900.00	90.41	88.700	7079.93	47.16N	6404.32E	==>	6404.41	
14000.00	90.41	88.700	7079.21	49.42N	6504.29E	==>	6504.40	
14100.00	90.41	88.700	7078.49	51.69N	6604.27E	==>	6604.39	
14200.00	90.41	88.700	7077.78	53.95N	6704.24E	==>	6704.38	
14300.00	90.41	88.700	7077.06	56.22N	6804.21E	==>	6804.38	
14400.00	90.41	88.700	7076.34	58.48N	6904.18E	==>	6904.37	
14500.00	90.41	88.700	7075.62	60.75N	7004.15E	==>	7004.36	
14600.00	90.41	88.700	7074.90	63.01N	7104.12E	==>	7104.35	
14700.00	90.41	88.700	7074.18	65.28N	7204.10E	==>	7204.35	
14800.00	90.41	88.700	7073.46	67.54N	7304.07E	==>	7304.34	

All data is in Feet unless otherwise stated
Coordinates are from Slot MD's are from Rig and TVD's are from Rig (Planned Datum #1 4886.0ft above Mean Sea Level)
Vertical Section is from 0.00N 0.00E on azimuth 89.280 degrees
Bottom hole distance is 9734.24 Feet on azimuth 89.28 degrees from Wellhead
Calculation method uses Minimum Curvature method
Prepared by Microsoft
Date Printed: 22-Nov-2017



SYS DRILL
Well Design Combined Report
Wellbore: W KTC Farms BA-35-36HN (PWB)



Interpolated Wellpath								
MD[ft]	Inc[deg]	Azi[deg]	TVD[ft]	North[ft]	East[ft]	Dogleg [deg/100ft]	Vertical Section[ft]	All Station Comments
14900.00	90.41	88.700	7072.74	69.81N	7404.04E	==>	7404.33	
15000.00	90.41	88.700	7072.03	72.07N	7504.01E	==>	7504.32	
15100.00	90.41	88.700	7071.31	74.34N	7603.98E	==>	7604.32	
15200.00	90.41	88.700	7070.59	76.60N	7703.95E	==>	7704.31	
15300.00	90.41	88.700	7069.87	78.87N	7803.93E	==>	7804.30	
15400.00	90.41	88.700	7069.15	81.13N	7903.90E	==>	7904.29	
15500.00	90.41	88.700	7068.43	83.40N	8003.87E	==>	8004.29	
15600.00	90.41	88.700	7067.71	85.66N	8103.84E	==>	8104.28	
15700.00	90.41	88.700	7067.00	87.93N	8203.81E	==>	8204.27	
15800.00	90.41	88.700	7066.28	90.19N	8303.79E	==>	8304.26	
15900.00	90.41	88.700	7065.56	92.46N	8403.76E	==>	8404.26	
16000.00	90.41	88.700	7064.84	94.73N	8503.73E	==>	8504.25	
16100.00	90.41	88.700	7064.12	96.99N	8603.70E	==>	8604.24	
16200.00	90.41	88.700	7063.40	99.26N	8703.67E	==>	8704.23	
16300.00	90.41	88.700	7062.68	101.52N	8803.64E	==>	8804.22	
16400.00	90.41	88.700	7061.97	103.79N	8903.62E	==>	8904.22	
16500.00	90.41	88.700	7061.25	106.05N	9003.59E	==>	9004.21	
16600.00	90.41	88.700	7060.53	108.32N	9103.56E	==>	9104.20	
16700.00	90.41	88.700	7059.81	110.58N	9203.53E	==>	9204.19	
16800.00	90.41	88.700	7059.09	112.85N	9303.50E	==>	9304.19	
16900.00	90.41	88.700	7058.37	115.11N	9403.47E	==>	9404.18	
17000.00	90.41	88.700	7057.65	117.38N	9503.45E	==>	9504.17	
17100.00	90.41	88.700	7056.93	119.64N	9603.42E	==>	9604.16	
17200.00	90.41	88.700	7056.22	121.91N	9703.39E	==>	9704.16	
17230.09	90.41	88.700	7056.00	122.59N	9733.47E	==>	9734.24	

All data is in Feet unless otherwise stated
Coordinates are from Slot MD's are from Rig and TVD's are from Rig (Planned Datum #1 4886.0ft above Mean Sea Level)
Vertical Section is from 0.00N 0.00E on azimuth 89.280 degrees
Bottom hole distance is 9734.24 Feet on azimuth 89.28 degrees from Wellhead
Calculation method uses Minimum Curvature method
Prepared by Microsoft
Date Printed: 22-Nov-2017



SYS DRILL
Well Design Combined Report
Wellbore: W KTC Farms BA-35-36HN (PWB)



Targets							
Name	North[ft]	East[ft]	TVD[ft]	Latitude	Longitude	Northing	Easting
KTC Farms BA-35-36HN - EP	98.04S	4.45W	7126.00	40.53774600	-104.75257800	1439617.14	3207739.34
KTC Farms BA-35-36HN - BH	122.59N	9733.47E	7056.00	40.53812100	-104.71753800	1439837.76	3217476.95

Survey Tool Program					
Reference	Survey Name	MD[ft]	TVD[ft]	Survey Tool	Error Model
587251	Planned	1500.00	1498.40	WdW Rate Gyro	Standard
587250	Planned	17230.09	7056.00	ISCWSA MWD	Rev 4 + SAG + FLT

Notes



SYSDRILL
Closest Approach + Clearance Factor Summary Report
Wellbore: W KTC Farms BA-35-36HN (PWB)



Ellipse separations are reported ONLY if BOTH wells have uncertainty data
Only Depth and Magnetic Reference Field error terms are correlated across tie points
Scan limit is calculated on CENTRE to CENTRE distance
Summary data uses Closest Approach clearance calculation for all minima
Hole size/Casings ARE included
Hole size/Casings are NOT subtracted from Centre-Centre distance
Confidence limit of 95.00% / 2.80 SD.

Wellbore		
Name	Created	Last Revised
W KTC Farms BA-35-36HN (PWB)	Nov-21-2017	Nov-22-2017

Well		
Name	Government ID	Last Revised
W KTC Farms BA-35-36HN		Nov-21-2017

Slot						
Name	Latitude	Longitude	Grid Northing	Grid Easting	North	East
KTC Farms BA-35-36HN	40.53801500	-104.75255900	1439715.1753	3207743.7950	29.87S	0.53E

Installation						
Name	Installation Position (Latitude)	Installation Position (Longitude)	Easting	Northing	Coord System Name	North Alignment
KTC Farms Pad	40.53809700	-104.75256000	3207743.2653	1439745.0452	CO83-NF on NORTH AMERICAN DATUM 1983 datum	Grid

Clearance Summary							
Offset WellName	Separation [ft]	MD[ft]	Diverging From[ft]	Ellipse Separation [ft]	Ellipse MD[ft]	Clearance Factor	Clearance MD[ft]
W Wilson 1-35	18.50	8110.70	8110.70	-66.68	8110.70	0.22	8110.70
W SRC Haythorn 31-36D	120.71	15576.18	15576.18	-244.08	15576.18	0.33	15576.18
W SRC TK 21-36D	138.57	14498.88	14498.88	-184.71	14500.00	0.43	14500.00
W SRC TK 11-36D	143.53	12867.55	12867.55	-118.08	12867.55	0.55	12867.55
W KTC Farms C-35-36HN	172.97	7200.00	7200.00	-194.78	17230.09	0.53	17230.09
W SRC Haythorn 41-36D	178.37	17085.37	17085.37	-240.15	17085.37	0.43	17085.37
W KTC Farms B-35-36HC	194.93	7200.00	7200.00	82.84	17230.09	1.43	17230.09
W KTC Farms A-35-36HN	221.82	7200.00	7200.00	-430.11	17230.09	0.36	17230.09
W Wilson 35-21	359.27	8773.63	8773.63	252.73	8784.84	3.36	8801.25
W KTC Farms D-35-36HN	448.78	7200.00	7489.41	-293.57	17230.09	0.61	17230.09
W KTC Farms E-35-36HC	636.13	7200.00	7489.41	-51.17	17230.09	0.93	17230.09
W KTC Farms EA-35-36HN	655.57	7200.00	12918.70	-113.59	17230.09	0.85	17230.09
W KTC Farms F-35-36HN	782.83	7200.00	7489.41	45.06	17230.09	1.06	17230.09
W SRC Haythorn 36CD	875.88	16302.17	16302.17	489.01	16330.77	2.26	16347.18

All data is in Feet unless otherwise stated
Coordinates are from Slot MD's are from Rig and TVD's are from Rig (Planned Datum #1 4886.0ft above Mean Sea Level)
Vertical Section is from 0.00N 0.00E on azimuth 89.280 degrees
Prepared by Microsoft
Date Printed: 14-May-2018



SYSDRILL
Closest Approach + Clearance Factor Summary Report
Wellbore: W KTC Farms BA-35-36HN (PWB)



Clearance Summary							
Offset WellName	Separation [ft]	MD[ft]	Diverging From[ft]	Ellipse Separation [ft]	Ellipse MD[ft]	Clearance Factor	Clearance MD[ft]
W SRC TK 36AD	940.36	13584.50	13584.50	656.60	13607.68	3.31	13640.49
W Noffsinger 35-15	941.53	10992.43	10992.43	753.95	11015.81	4.98	11097.83
W Wilson 35-25	948.90	8473.16	8473.16	852.31	8505.97	9.53	8686.42
W KTC Farms G-35-36HN	1099.01	7200.00	7489.41	340.48	17230.09	1.44	17230.09
W KTC Farms H-35-36HC	1255.03	7200.00	7489.41	539.10	17230.09	1.71	17230.09
W KTC Farms HA-35-36HN	1310.81	7200.00	17206.89	544.90	17230.09	1.70	17230.09
W KTC Farms I-35-36HN	1417.84	7200.00	7489.41	674.20	17230.09	1.87	17230.09
W Wilson 35-24	1560.21	8928.97	8928.97	1447.60	8981.69	13.02	9375.39
W SRC TK 12-36D	1603.78	12877.74	12877.74	1341.48	12918.70	6.08	13017.13
W SRC Haythorn 42-36D	1636.44	17046.58	17046.58	1218.02	17101.77	3.89	17200.20
W SRC TK 22-36D	1647.87	14209.71	14209.71	1337.14	14280.25	5.24	14444.29
W SRC Haythorn 32-36D	1677.74	15467.85	15467.85	1314.77	15510.56	4.61	15576.18
W KTC Farms J-35-36HN	1716.57	7200.00	7489.41	993.16	17230.09	2.28	17230.09
W Noffsinger 35-13	1786.87	10064.76	10064.76	1633.06	10129.99	11.12	10490.88
W KTC Farms K-35-36HC	1809.69	7200.00	7200.00	1177.17	17230.09	2.53	17230.09
W KTC Farms KA-35-36HN	1902.88	7200.00	7489.41	1203.93	17230.09	2.55	17230.09
W KTC Farms L-35-36HN	1956.74	7200.00	7200.00	1329.28	17230.09	2.72	17230.09
W Renfroe 42-1-36CHZ	2255.96	16990.29	16990.29	1835.00	17036.15	5.33	17230.09
W Renfroe C-1-36NHZ	2263.46	16315.15	16315.15	1869.45	16396.39	5.66	16740.88
W Renfroe 42-1-36NHZ	2266.95	16675.26	16675.26	1858.34	16740.88	5.50	17019.75
W Renfroe 32-1-36NHZ	2310.84	15465.65	15465.65	1943.23	15592.59	6.08	16019.09
W Renfroe 32-1-36CHZ	2318.90	15904.27	15901.62	1940.13	16002.69	5.97	16400.00

