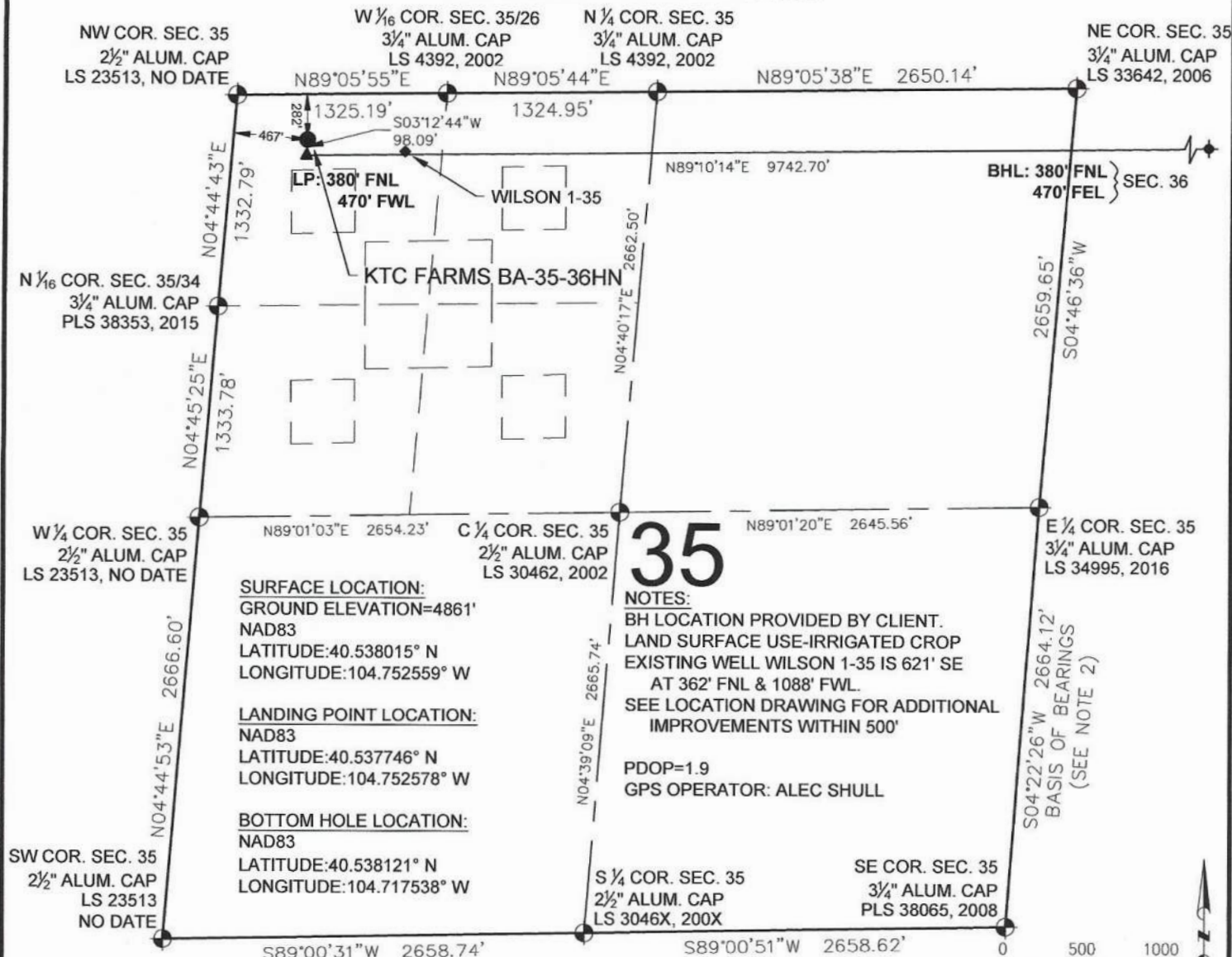


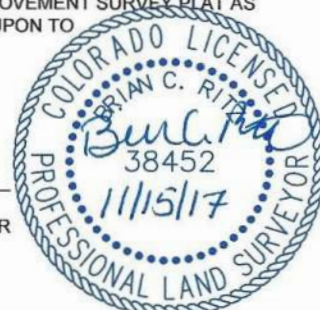
KTC FARMS BA-35-36HN WELL LOCATION CERTIFICATE



WELL KTC FARMS BA-35-36HN TO BE LOCATED 282' FNL & 467' FWL

I, BRIAN C. RITZ, A LICENSED PROFESSIONAL LAND SURVEYOR IN THE STATE OF COLORADO DO HEREBY CERTIFY TO **BAYSWATER EXPLORATION & PRODUCTION, LLC**, THAT THE SURVEY AND WELL LOCATION CERTIFICATE SHOWN HEREON WERE DONE BY ME OR UNDER MY DIRECT SUPERVISION AND THAT THE DRAWING SHOWN HEREON ACCURATELY DEPICTS THE PROPOSED LOCATION OF THE WELL. THIS CERTIFICATE DOES NOT REPRESENT A LAND SURVEY PLAT OR IMPROVEMENT SURVEY PLAT AS DEFINED BY C.R.S. 38-51-102 AND CANNOT BE RELIED UPON TO DETERMINE OWNERSHIP.

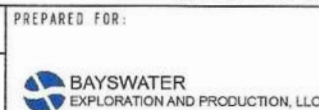
BRIAN C. RITZ, PLS 38452
 COLORADO LICENSED PROFESSIONAL LAND SURVEYOR
 FOR AND ON BEHALF OF P.F.S., LLC
 d.b.a. ASCENT GEOMATICS SOLUTIONS



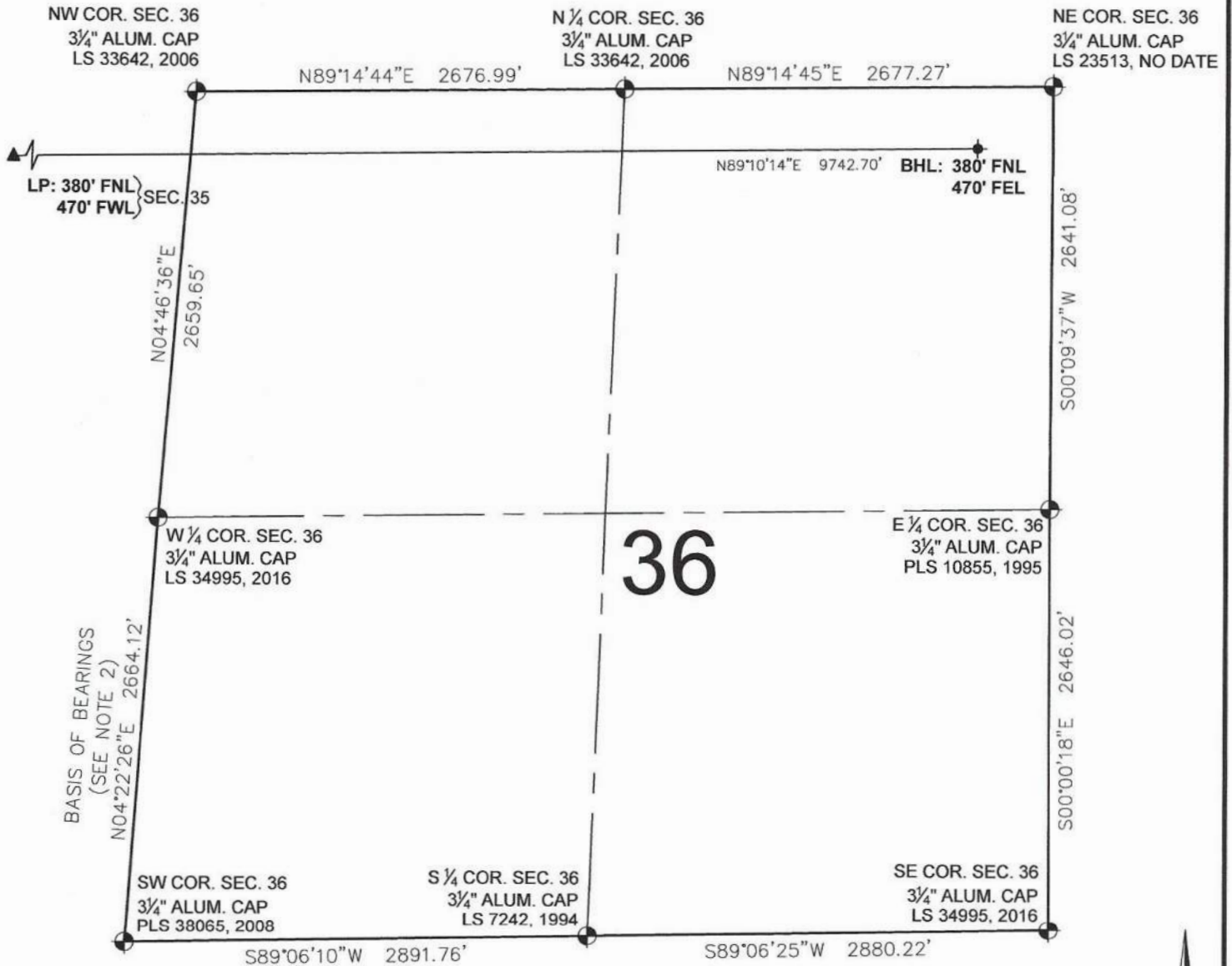
SHEET 1 OF 2



FIELD DATE: 06-01-17	WELL NAME: KTC FARMS BA-35-36HN
DRAWING DATE: 11-09-17	SURFACE LOCATION: NW 1/4 NW 1/4, SEC. 35, T7N, R66W, 6TH P.M.
BY: DP	CHECKED: WDW
	WELD COUNTY, COLORADO



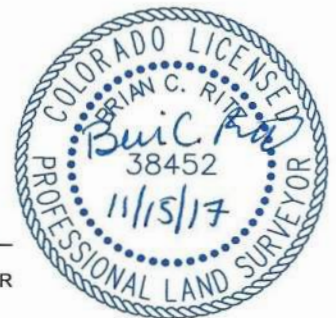
KTC FARMS BA-35-36HN WELL LOCATION CERTIFICATE



LEGEND

- ⊕ = EXISTING MONUMENT ◆ = BOTTOM HOLE
- = CALCULATED POSITION ▲ = LANDING POINT
- = PROPOSED WELL LP = LANDING POINT
- ◆ = EXISTING WELL BHL = BOTTOM HOLE LOCATION

BRIAN C. RITZ, PLS 38452
COLORADO LICENSED PROFESSIONAL LAND SURVEYOR
FOR AND ON BEHALF OF P.F.S., LLC
d.b.a. ASCENT GEOMATICS SOLUTIONS



SHEET 2 OF 2

<p>ASCENT GEOMATICS SOLUTIONS</p>	7535 Hilltop Circle Denver, CO 80221 (303) 928-7128 www.ascentgeomatics.com	FIELD DATE: 06-01-17	WELL NAME: KTC FARMS BA-35-36HN	PREPARED FOR: BAYSWATER EXPLORATION AND PRODUCTION, LLC
	DRAWING DATE: 11-09-17	SURFACE LOCATION: NW 1/4 NW 1/4, SEC. 35, T7N, R66W, 6TH P.M.	BY: DP	
WELD COUNTY, COLORADO				