

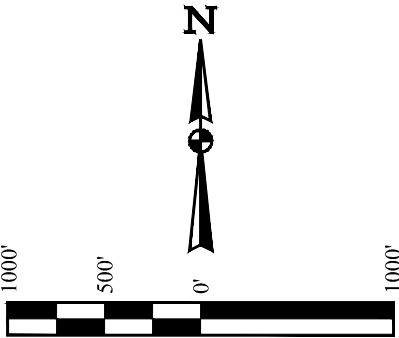
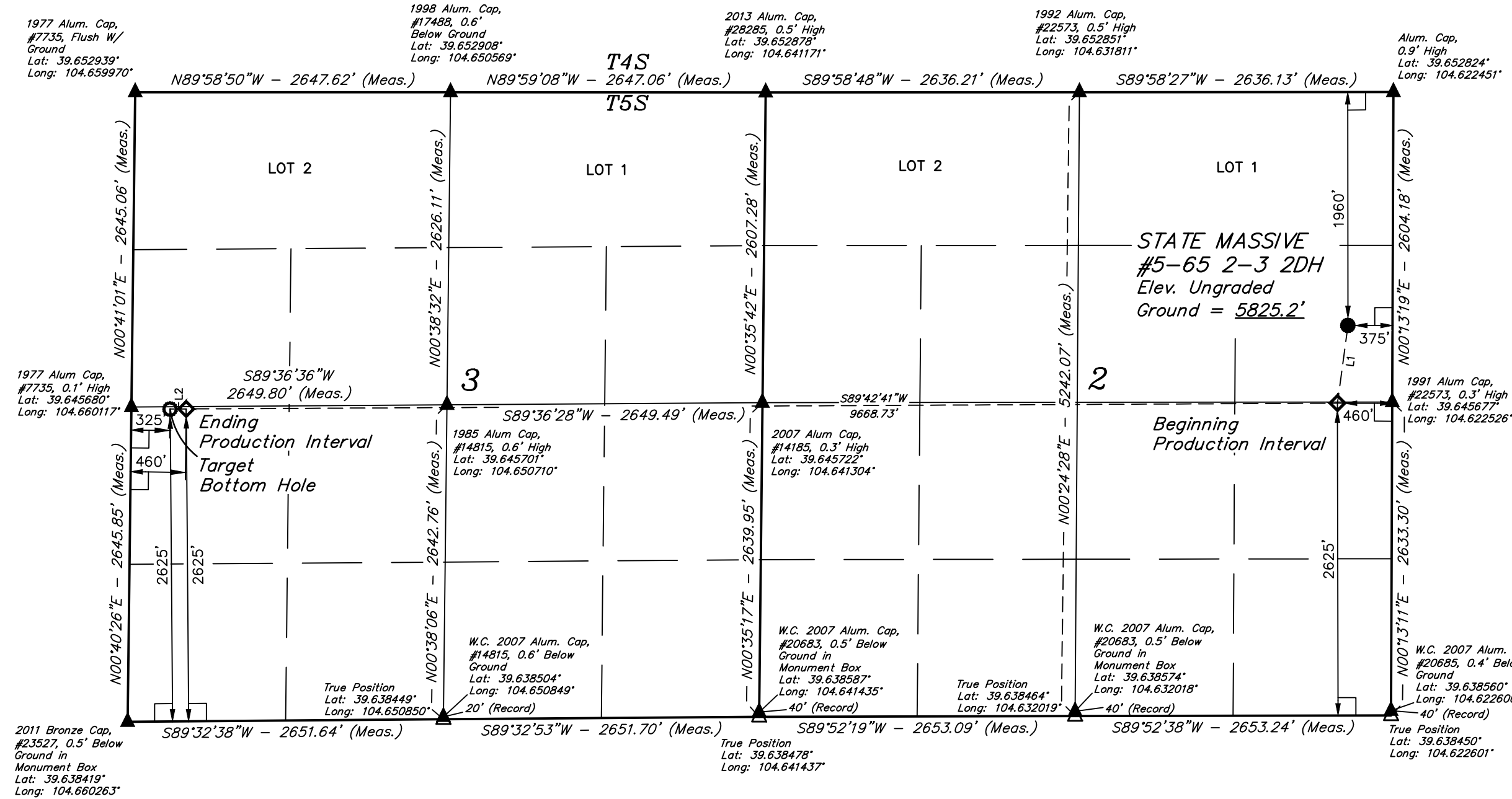
T5S, R65W, 6th P.M.

ConocoPhillips Company

STATE MASSIVE #5-65 2-3 2DH
SE 1/4 NE 1/4, SECTION 2, T5S, R65W, 6th P.M.
ARAPAHOE COUNTY, COLORADO

BASIS OF BEARINGS
TRANSVERSE MERCATOR PROJECTION WITH A CENTRAL MERIDIAN OF W105°00'00".
BASIS OF ELEVATION
OPUS SOLUTION GENERATED NAVD 88

LINE TABLE		
LINE	DIRECTION	LENGTH
L1	S07°37'42"W	658.94'
L2	S89°32'38"W	135.03'



CERTIFICATE
THIS IS TO CERTIFY THAT THE ABOVE PLAT WAS PREPARED FROM FIELD NOTES OF ACTUAL SURVEYS MADE BY ME OR UNDER MY SUPERVISION, AND THAT THE SAME ARE TRUE AND CORRECT TO THE BEST OF MY KNOWLEDGE AND BELIEF.
CHAD MEIERS, A.K.
REGISTERED LAND SURVEYOR
REGISTRATION NO. 28285
STATE OF COLORADO
2018-18

- LEGEND:
- 90° SYMBOL
 - PROPOSED WELLHEAD.
 - PRODUCTION INTERVAL.
 - TARGET BOTTOM HOLE.
 - SECTION CORNERS LOCATED. (NAD 83)
 - SECTION CORNERS RE-ESTABLISHED. (Not Set on Ground.) (NAD 83)

NAD 83 (SURFACE HOLE LOCATION)	NAD 83 (BEG. PROD. INTERVAL)	NAD 83 (ENDING PROD. INTERVAL)	NAD 83 (TARGET BOTTOM HOLE)
LATITUDE = 39°38'50.81" (39.647448°)	LATITUDE = 39°38'44.36" (39.645657°)	LATITUDE = 39°38'44.27" (39.645629°)	LATITUDE = 39°38'44.26" (39.645628°)
LONGITUDE = 104°37'25.82" (104.623839°)	LONGITUDE = 104°37'26.97" (104.624159°)	LONGITUDE = 104°39'30.55" (104.658485°)	LONGITUDE = 104°39'32.27" (104.658964°)
NAD 27 (SURFACE HOLE LOCATION)	NAD 27 (BEG. PROD. INTERVAL)	NAD 27 (ENDING PROD. INTERVAL)	NAD 27 (TARGET BOTTOM HOLE)
LATITUDE = 39°38'50.86" (39.647461°)	LATITUDE = 39°38'44.41" (39.645670°)	LATITUDE = 39°38'44.31" (39.645642°)	LATITUDE = 39°38'44.30" (39.645640°)
LONGITUDE = 104°37'23.93" (104.623315°)	LONGITUDE = 104°37'25.09" (104.623635°)	LONGITUDE = 104°39'28.66" (104.657960°)	LONGITUDE = 104°39'30.38" (104.658439°)
STATE PLANE NAD 83 (CO. CEN.)	STATE PLANE NAD 83 (CO. CEN.)	STATE PLANE NAD 83 (CO. CEN.)	STATE PLANE NAD 83 (CO. CEN.)
N: 1661901.36' E: 3246717.25'	N: 1661247.95' E: 3246633.36'	N: 1661146.52' E: 3236967.68'	N: 1661144.71' E: 3236832.70'
STATE PLANE NAD 27 (CO. CEN.)	STATE PLANE NAD 27 (CO. CEN.)	STATE PLANE NAD 27 (CO. CEN.)	STATE PLANE NAD 27 (CO. CEN.)
N: 661894.19' E: 2246871.19'	N: 661240.79' E: 2246787.31'	N: 661139.19' E: 2237121.70'	N: 661137.38' E: 2236986.73'

PDOP = 1.3

REV: 1 05-18-18 C.IVIE (BPI, EPI, TBH & NAME CHANGE)



UELS, LLC
Corporate Office * 85 South 200 East
Vernal, UT 84078 * (435) 789-1017

SURVEYED BY	CHAD MEIERS, A.K.	03-22-18	SCALE
DRAWN BY	C.IVIE	03-29-18	1" = 1000'

WELL LOCATION PLAT