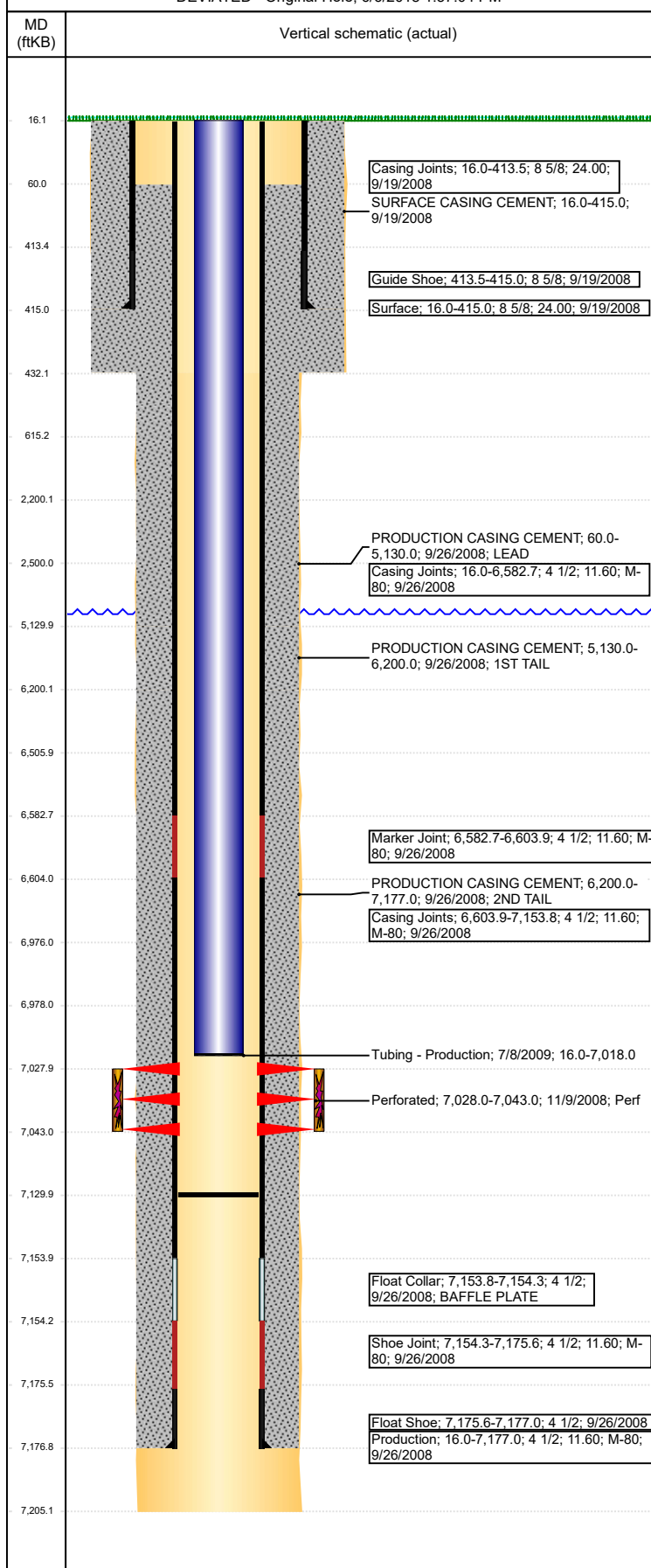


Well Name: GWAA 02-34

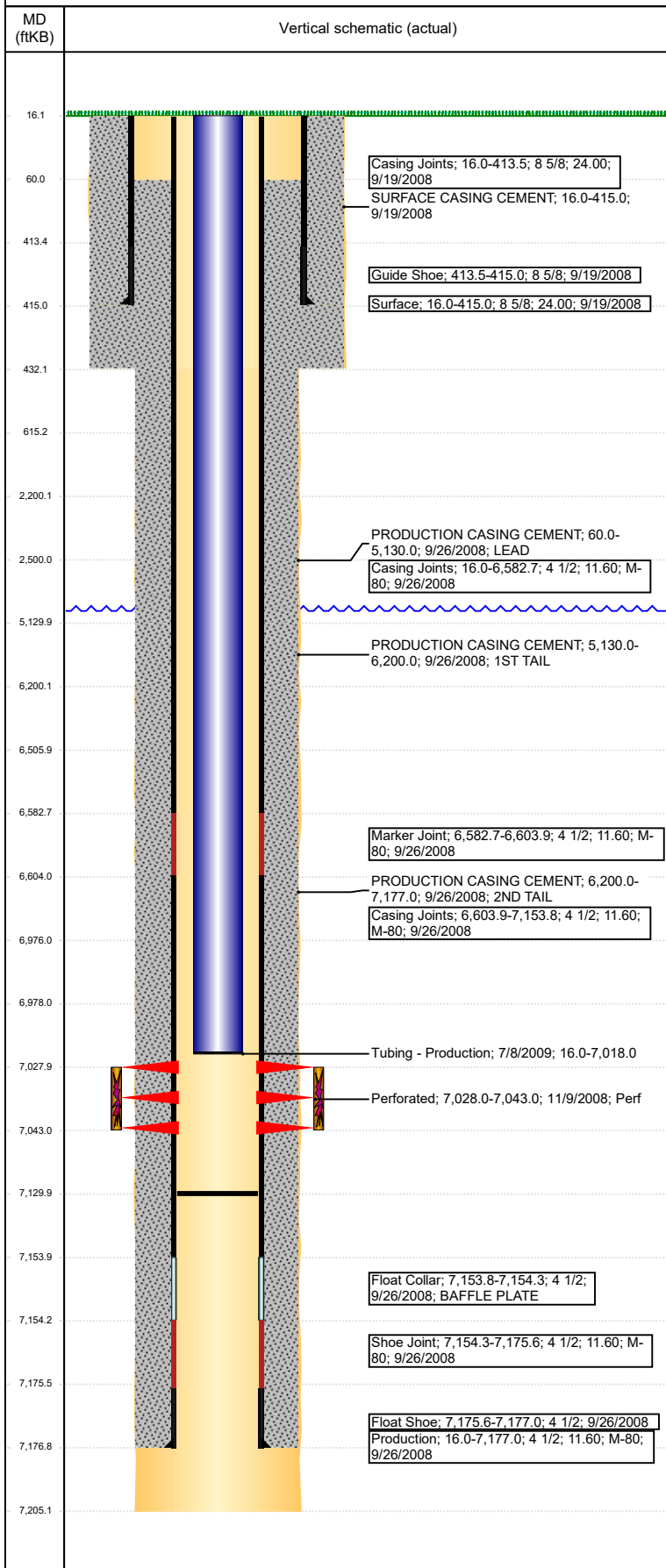
DEVIATED - Original Hole, 6/6/2018 1:57:04 PM



Well Header							
API 05-123-27069			Well Report Center 425778715			Well Configuration Type DEVIATED	
Original KB Elevation (ft) 4,642		KB - GL / MSL (ftKB) 16.00		Spud Date 9/19/2008		P & A Date	
Production Route Watt - A3-01			Well Production Status PR			SoRT Ignore No	
Directions To Well				Actual Latitude (°) 40.42338000		Actual Longitude (°) -104.63603000	
Comment LITTLE INFO IN FILE, USED STATE RPTS & DRL RPTS. CEMENT BASKETS @ 5001', 4360', & 3678'. FIELD OPS NOTICE- FLOWLINES ABANDONED PER RULE 1103, RCVD 6/22/17.							
Congressional Location							
Quarter 3 SW	Quarter 4 SW	Section 2	Township 5	Twnshp N/S Dir N	Range 65	Range E/W Dir W	
Rig Operator							
Rig Operator							
Plug Back Total Depths							
Date	Depth (ftKB)	Method			Com		
7/8/2009	7,130.0	TAG			RIH W/ BURN & FINISH CHASING TO 7130', ROLL...		
Wellbore Sections							
Section Des		Size (in)		Act Top, MD (ftKB)		Act Btm, MD (ftKB)	
SURFACE		12 1/4		16		432	
PRODUCTION		7 7/8		432		7,205	
Zone Statuses							
Zone Name		Status Date			Status		
CODELL		1/8/2009			PR		
Casing Strings							
Surface, 415.0ftKB							
Casing Description Surface		Run Date 9/19/2008	OD (in) 8 5/8	Wt/Len (l... 24.00	Grade	Top, MD (ft... 16.0	MD (ftKB) 415.0
Production, 7,177.0ftKB							
Casing Description Production		Run Date 9/26/2008	OD (in) 4 1/2	Wt/Len (l... 11.60	Grade M-80	Top, MD (ft... 16.0	MD (ftKB) 7,177.0
Cement							
Des		Start Date		Top (ftKB)		Btm (ftKB)	
SURFACE CASING CEMENT		9/19/2008		16.0		415.0	
PRODUCTION CASING CEMENT		9/26/2008		60.0		5,130.0	
PRODUCTION CASING CEMENT		9/26/2008		5,130.0		6,200.0	
Proposed Cement							
Des				Top (ftKB)		Btm (ftKB)	
Cement Plug				6,506.0		6,976.0	
Courtesy plug				2,200.0		2,500.0	
Shoe Plug				16.0		615.0	
Tubing Strings							
Tubing Description Tubing - Production		Run Date 7/8/2009	String... 2 3/8	ID (in)	Wt (lb/ft)	Grade	Len (ft) 7,002.00
Tubing Components							
Item Des		OD (in)	Wt (lb/ft)	Grade	Jts	Len (ft)	Btm (ftKB)
Tubing		2 3/8			216	7,000.40	7,016.4
Seal Nipple		2 3/8			1	1.10	7,017.5
Notched collar		2 3/8			1	0.50	7,018.0
Other In Hole							
Run Date		Des			OD (in)	Top (ftKB)	Btm (ftKB)
Proposed Other In Hole							
Des		OD (in)		Top (ftKB)		Btm (ftKB)	
Cast Iron Bridge Plug		4		6,976.0		6,978.0	
Logs							
Date		Type				Top, MD (ftKB)	Btm, MD (ftKB)
9/25/2008		COMPENSATED DENSITY				2,600.0	7,179.0
9/25/2008		INDUCTION				400.0	7,199.0
11/11/2008		CEMENT BOND				16.0	7,130.0
5/15/2018		GYRO				16.0	6,950.0

Well Name: GWAA 02-34

DEVIATED - Original Hole, 6/6/2018 1:57:05 PM



Perforation Data				
Linked Zone	Sum of Entered Shot Total	Top (ftKB)	Btm (ftKB)	Date
CODELL, Original Hole	60	7,028.00	7,043.00	11/9/2008
Total (Sum)	60			

Job Supply Amounts						
Supply Item Des	Type	Uni...	Job Category	Total...	Total...	Total...