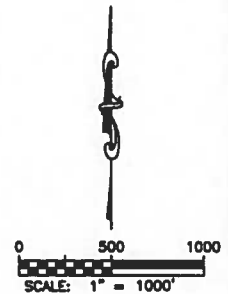
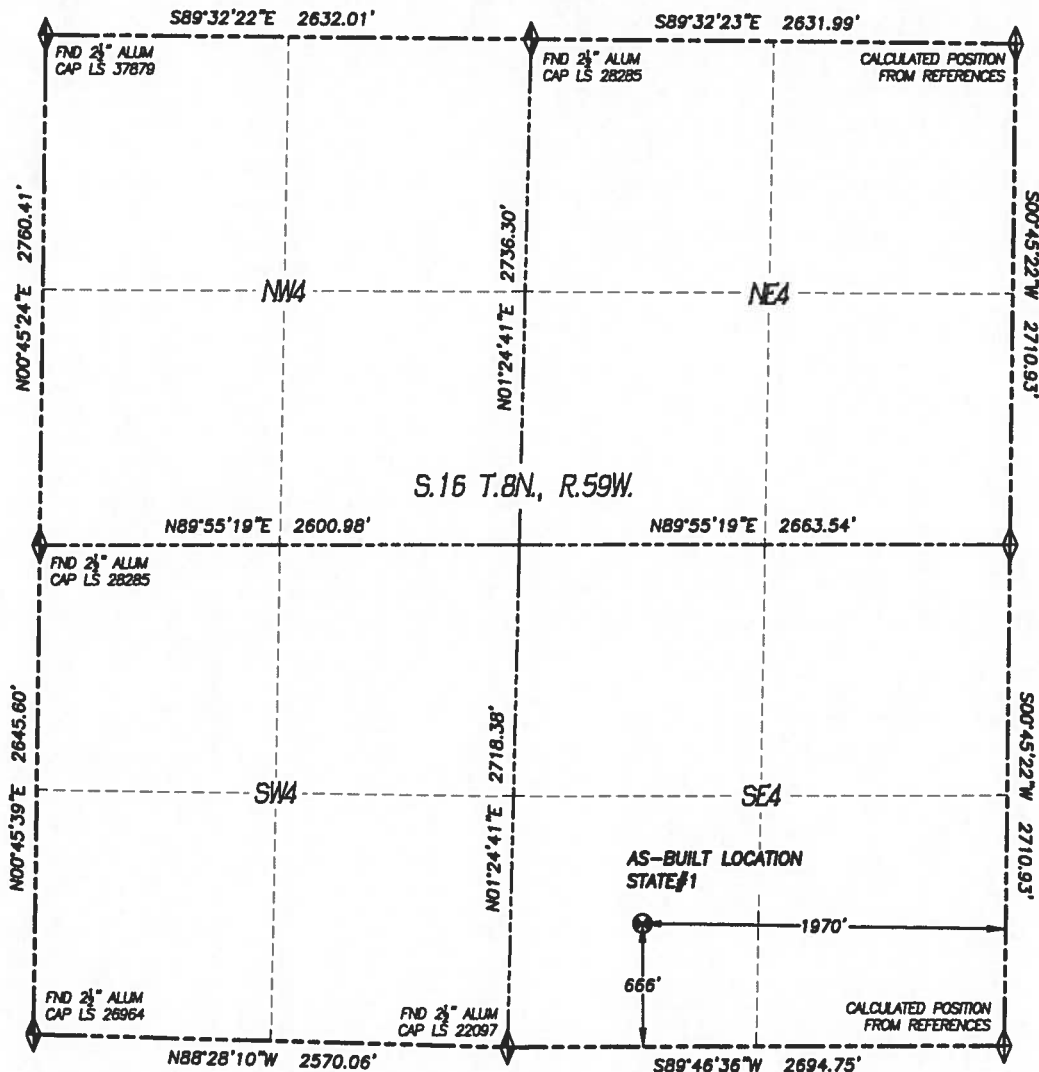


DALEY LAND SURVEYING, INC. 970.302.4159

WELL AS-BUILT SURVEY

STATE #1

SECTION: 16
TOWNSHIP: 8N
RANGE: 59W



- LEGEND**
- ◆ FOUND MONUMENT AS DESCRIBED
 - ⊙ PROPOSED WELL
 - ⊙ EXISTING WELL
 - BOTTOM HOLE
 - ⊙ ABANDONED WELL
 - ◆ CALCULATED POSITION

IN ACCORDANCE WITH A REQUEST FROM TONY BALL OF NOBLE ENERGY INC., DALEY LAND SURVEYING, INC. HAS DETERMINED THE SURFACE LOCATION OF THE STATE #1 WELL TO BE 666' FSL, 1970' FEL, AS MEASURED AT NINETY (90) DEGREES FROM THE SECTION LINES OF SECTION 16, TOWNSHIP 8 NORTH, RANGE 59 WEST, OF THE 6TH PRINCIPAL MERIDIAN, WELD COUNTY, COLORADO.

I HEREBY STATE THAT THIS WELL AS-BUILT SURVEY WAS PREPARED BY ME OR UNDER MY DIRECT SUPERVISION, THAT THE WORK WAS COMPLETED ON 4/18/2018 FOR AND ON BEHALF OF NOBLE ENERGY, INC., AND THAT THIS MAP DOES NOT REPRESENT A BOUNDARY SURVEY, IT IS NOT A LAND SURVEY PLAT OR AN IMPROVEMENT SURVEY PLAT AND IT IS NOT TO BE RELIED UPON FOR THE ESTABLISHMENT OF FENCE, BUILDING OR OTHER FUTURE IMPROVEMENT LINES.

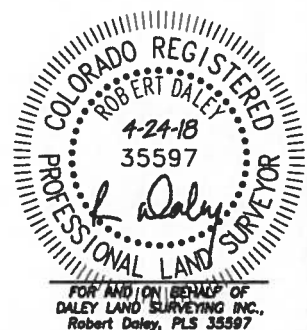
NOTES:

- 1) BEARINGS FOR THIS MAP ARE ASSUMED AND BASED UPON GPS OBSERVATIONS MADE BETWEEN MONUMENTS LOCATED AT THE SOUTH QUARTER CORNER AND THE SOUTHWEST CORNER OF SECTION 16, T.8N., R.59W.
- 2) HORIZONTAL DATUM IS NAD83.
- 3) VERTICAL DATUM IS NAVD88 AND ORIGINATES FROM THE LOCAL C.O.R.S. NETWORK, UTILIZING THE GEOID12A MODEL.
- 4) SURFACE USE: PASTURE.
- 5) INST. OPERATOR: KYLE DALEY.
- 6) NO EXCAVATION WAS DONE TO VERIFY LOCATION AS DETERMINED BY VISUAL INSPECTION AND METAL LOCATOR.

NAD 83 LATITUDE AND LONGITUDE

SURFACE LOCATION:

LATITUDE: N40.65650°
LONGITUDE: W103.97932°
ELEV: 4851'
PDOP: 1.5
QTR/QTR: SW4/SE4



Drawing Date: 4/24/18

API: 05-123-06149