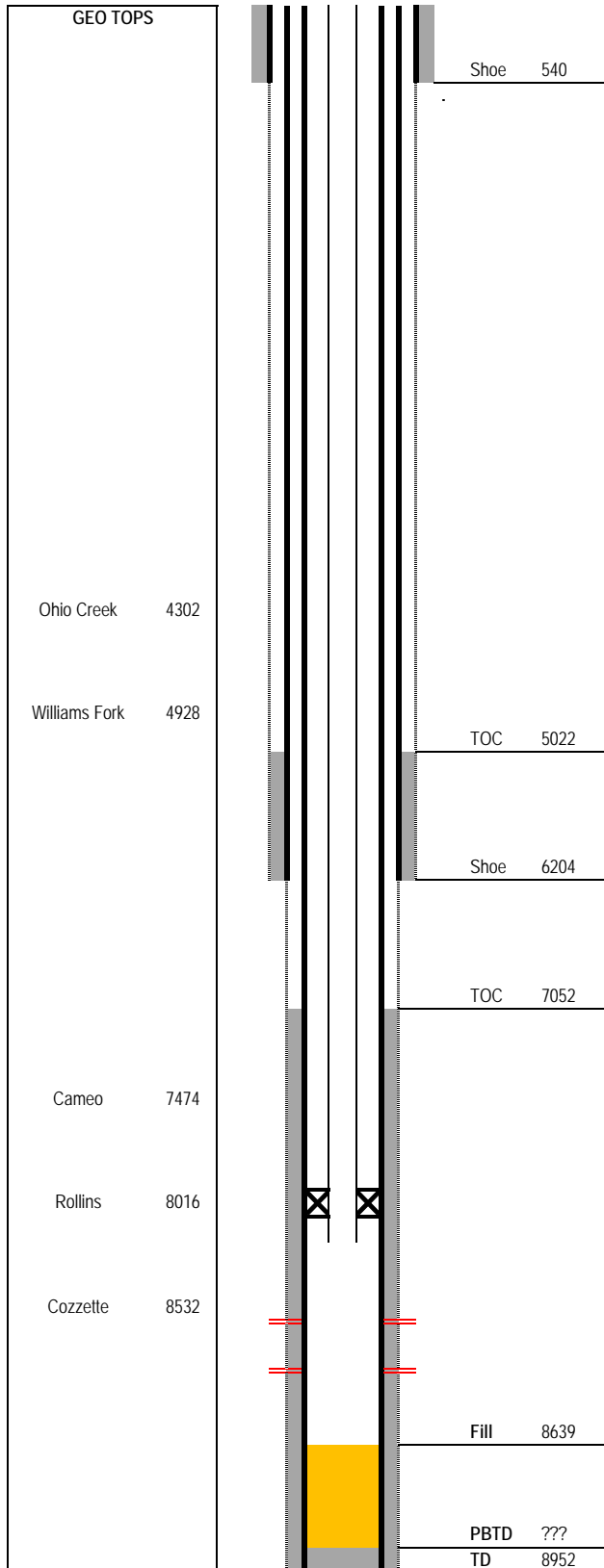


Laramie Energy, LLC

Wellbore Diagram

Not to scale



Well Name Buzzard Creek Unit 12-4
 API Number 05-077-05106-00
 Pad Buzzard Creek 12D
 Surface Location 660 FNL & 330 FWL NWNW S12 T9S R93W
 Bottom Hole Location
 Field Buzzard Creek
 County, State Mesa, CO
 Diagram Date 2018-May-30
 KB Elevation 7602
 KB Height 10
 GL Elevation 7592

Surface Hole
 Surface Casing 10-3/4" 32.75# H40 @ 540
 Cement 300 sx
 TOC @ surface

Intermediate Hole
 Intermediate Casing 7-5/8" 26.4# J55 and L80 @ 6204
 Cement 260 sx
 TOC @ 5022 per TS

Production Hole
 Production Casing 5-1/2" 15.5# & 17# J55 & N80 @ 8700
 Cement 400 sx
 TOC @ 7052 per CBL

Tubing 243 jts 2-7/8" L80 EUE 8rd @ 8456
 Baker Hornet Packer COE @ 8440

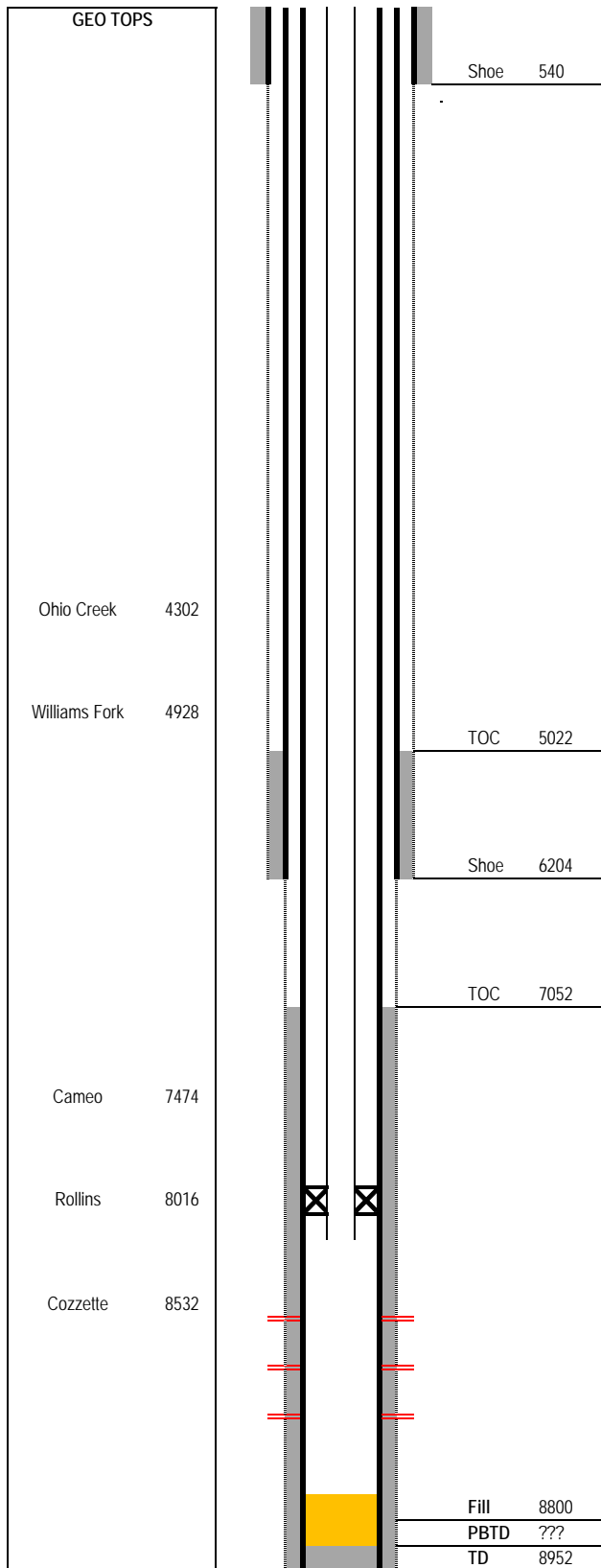
| Perforations Zone | Top | Bottom | Net |
|-------------------|--------|--------|-----|
| Cozzette | 8534 | 8546 | 12 |
| Cozzette | 8552 | 8572 | 20 |
| Cozzette | (8562) | 8566) | 4 |

tagged with tbq 10/6/2015, Baker Model C BP was @ 8587

Laramie Energy, LLC

Proposed Wellbore Diagram

Not to scale



Well Name Buzzard Creek Unit 12-4
API Number 05-077-05106-00
Pad Buzzard Creek 12D
Surface Location 660 FNL & 330 FWL NWNW S12 T9S R93W
Bottom Hole Location
Field Buzzard Creek
County, State Mesa, CO
Diagram Date 2018-May-30
KB Elevation 7602
KB Height 10
GL Elevation 7592

Surface Hole
Surface Casing 10-3/4" 32.75# H40 @ 540
Cement 300 sx
TOC @ surface

Intermediate Hole
Intermediate Casing 7-5/8" 26.4# J55 and L80 @ 6204
Cement 260 sx
TOC @ 5022 per TS

Production Hole
Production Casing 5-1/2" 15.5# & 17# J55 & N80 @ 8700
Cement 400 sx
TOC @ 7052 per CBL

Tubing
240 js 2-7/8" L80 EUE 8rd tbg
2-7/8" On/Off Tool
2-7/8" x 4-6 ft pup jt
Baker Hornet Packer COE @ 8375
2-7/8" tbg jt
2-7/8" XN NoGo Nipple
2-7/8" tbg jt
2-7/8" WL Re-Entry Guide

| Perforations Zone | Top | Bottom | Net |
|-------------------|------|--------|-----|
| Cozzette | 8532 | 8666 | 134 |