

Location:	COLORADO	Slot:	SLOT#18 STATE ANTELOPE J14-2-14XRLNB (758'FSL & 811'FWL, SEC.02)
Field:	WELD COUNTY	Well:	STATE ANTELOPE J14-2-14XRLNB
Facility:	SEC.02-T5N-R62W	Wellbore:	STATE ANTELOPE J14-2-14XRLNB PWB

Location:	COLORADO	Slot:	SLOT#18 STATE ANTELOPE J14-2-14XRLNB (758'FSL & 811'FWL, SEC.02)
Field:	WELD COUNTY	Well:	STATE ANTELOPE J14-2-14XRLNB
Facility:	SEC.02-T5N-R62W	Wellbore:	STATE ANTELOPE J14-2-14XRLNB PWB

Plot reference wellpath is STATE ANTELOPE J14-2-14XRLNB PWP (REV-A.0)	Grid System: NAD83 / Lambert Colorado SP, Northern Zone (501), US feet
True vertical depths are referenced to RIG (17'KB) (RKB)	* = Wellpath was transformed from a different geodetic datum
Measured depths are referenced to RIG (17'KB) (RKB)	North Reference: True north
RIG (17'KB) (RKB) to Mean Sea Level: 4641 feet	Scale: True distance
Mean Sea Level to Mud line (At Slot: SLOTF16 STATE ANTELOPE J14-2-14XRLNB (756'FSL & 611'FWL, SEC.02)): 0 feet	Depths are in feet
Coordinates are in feet referenced to Slot	Created by: ingmjmr on 2017-12-01
	Database: Denver

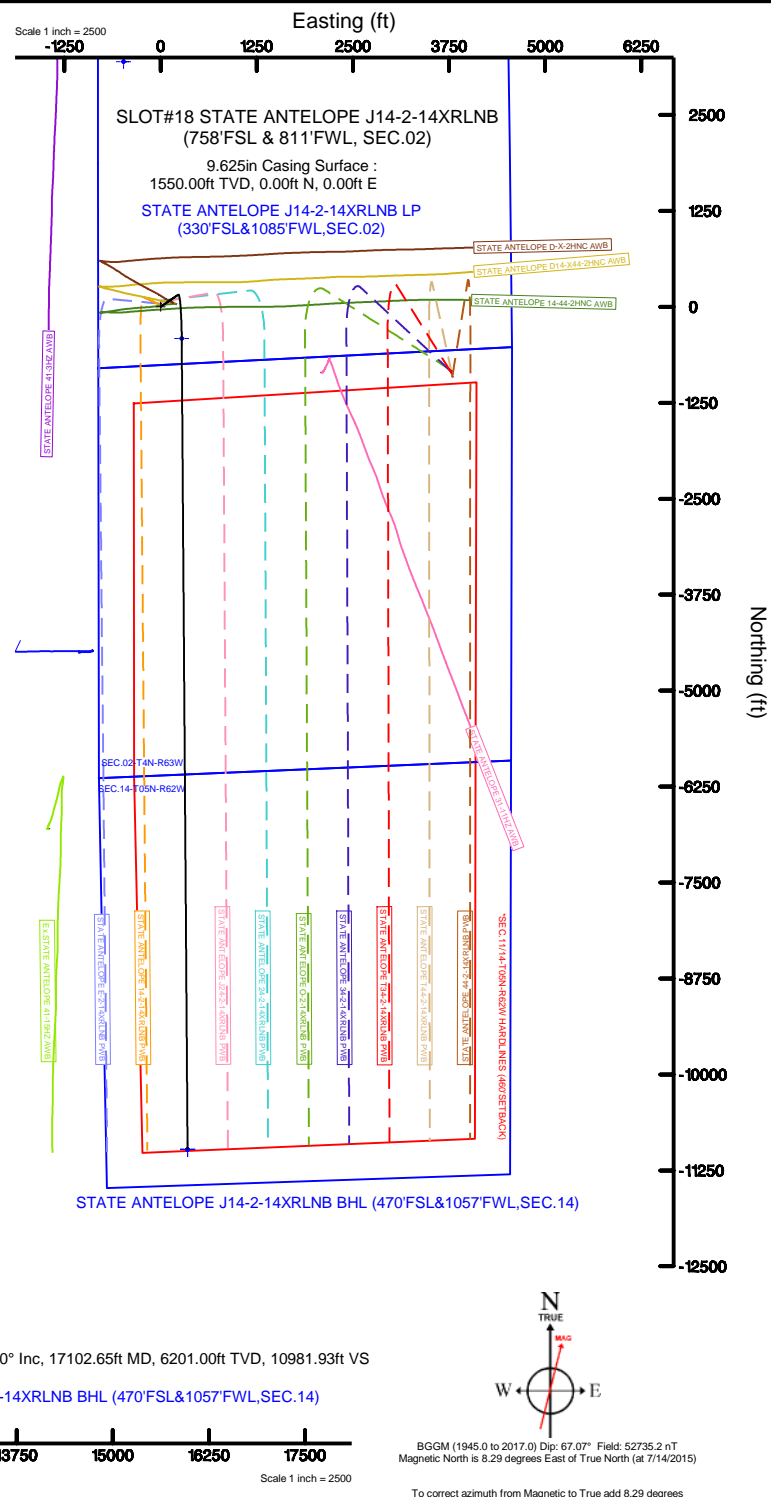
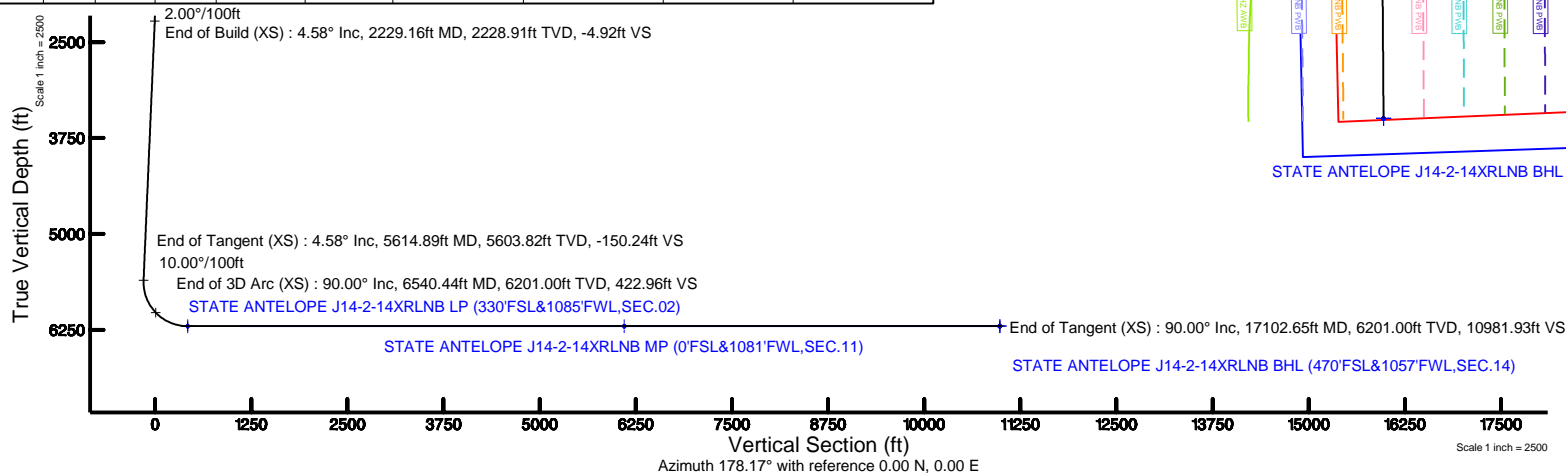
Facility Name				Grid East (US ft)	Grid North (US ft)	Latitude	Longitude
SEC.02-T5N-R62W				3335097.552	1399676.056	40°25'27.372"N	104°17'47.504"W
Slot	Local N (ft)	Local E (ft)	Grid East (US ft)	Grid North (US ft)	Latitude	Longitude	
SLOT#18 STATE ANTELOPE J14-2-14XRLNB (75#FSL & 811FWL, SEC.02)	-41.09	-200.54	3334887.594	1399632.254	40°25'28.966"N	104°17'49.593"W	
RIG (17K8) (R8B) to Mud line (At Slot: SLOT#18 STATE ANTELOPE J14-2-14XRLNB (75#FSL & 811FWL, SEC.02))						4641ft	
Mean Sea Level to Mud line (At Slot: SLOT#18 STATE ANTELOPE J14-2-14XRLNB (75#FSL & 811FWL, SEC.02))						0ft	
RIG (17K8) (R8B) to Mean Sea Level						4641ft	

Design Comment	MD (ft)	Inc (°)	Az (°)	TVD (ft)	Local N (ft)	Local E (ft)	DLS (°/100ft)	VS (ft)
Tie On	17.00	0.000	55.681	17.00	0.00	0.00	0.00	0.00
End of Tangent	2000.00	0.000	55.681	2000.00	0.00	0.00	0.00	0.00
End of Build (XS)	2229.16	4.583	55.681	2228.91	5.16	7.57	2.00	-4.92
End of Tangent (XS)	5614.89	4.583	55.681	5603.82	157.69	231.01	0.00	-150.24
End of 3D Arc (XS)	6540.44	90.000	179.589	6201.00	-414.39	274.84	10.00	422.96
End of Tangent (XS)	17102.65	90.000	179.589	6201.00	-10976.33	350.62	0.00	10981.93

Name	Start MD (ft)	End MD (ft)	Interval (ft)	Start TVD (ft)	End TVD (ft)	Start Local N (ft)	Start Local E (ft)	End Local N (ft)	End Local E (ft)	Wellbore
9.625in Casing Surface	17.00	1550.00	1533.00	17.00	1550.00	0.00	0.00	0.00	0.00	STATE ANTELOPE J14-2-14XR1NB PWB
8.5in Open Hole	1550.00	17102.65	15552.65	1550.00	6201.00	0.00	0.00	-10976.33	350.62	STATE ANTELOPE J14-2-14XR1NB PWB

Start MD (ft)	End MD (ft)	Tool	Model	Log Name/Comment	Wellbore
17.00	1550.00	BHI NavTrak	Custom BHI NavTrak (Standard Rotating-Axial Core) (Rockies 0.03Gt model)		STATE ANTELOPE J14-2-14XR/LNB PWB
1550.00	17108.42	BHI AutoTrak Curve	Custom BHI AutoTrak Curve (Axial Core, Short spacing) (Rockies 0.03Gt model)		STATE ANTELOPE J14-2-14XR/LNB PWB

MD (ft)	Inc (°)	Az (°)	TVD (ft)	Local N (ft)	Local E (ft)	Grid East (US ft)	Grid North (US ft)	Latitude	Longitude
17102.65	90.000	179.589	6201.00	-10976.33	350.62	3335387.06	1388662.13	40°23'38.502"N	104°17'45.065"W





Planned Wellpath Report

STATE ANTELOPE J14-2-14XRLNB PWP (REV-A.0)
Page 1 of 10



REFERENCE WELLPATH IDENTIFICATION

Operator	BONANZA CREEK OIL COMPANY	Slot	SLOT#18 STATE ANTELOPE J14-2-14XRLNB (758'FSL & 811'FWL, SEC.02)
Area	COLORADO	Well	STATE ANTELOPE J14-2-14XRLNB
Field	WELD COUNTY	Wellbore	STATE ANTELOPE J14-2-14XRLNB PWB
Facility	SEC.02-T5N-R62W		

REPORT SETUP INFORMATION

Projection System	NAD83 / Lambert Colorado SP, Northern Zone (501), US feet	Software System	WellArchitect® 5.0
North Reference	True	User	Ingmjmr
Scale	0.999961	Report Generated	12/1/2017 at 10:41:35 AM
Convergence at slot	0.78° East	Database/Source file	Denver/STATE_ANTELOPE_J14-2-14XRLNB_PWP__REV-A.0_.xml

WELLPATH LOCATION

	Local coordinates		Grid coordinates		Geographic coordinates	
	North[ft]	East[ft]	Easting[US ft]	Northing[US ft]	Latitude	Longitude
Slot Location	-41.09	-200.54	3334887.59	1399632.25	40°25'26.966"N	104°17'49.597"W
Facility Reference Pt			3335087.55	1399676.06	40°25'27.372"N	104°17'47.004"W
Field Reference Pt			3224525.77	1254425.87	40°01'44.400"N	104°41'53.556"W

WELLPATH DATUM

Calculation method	Minimum curvature	RIG (17'KB) (RKB) to Facility Vertical Datum	4641.00ft
Horizontal Reference Pt	Slot	RIG (17'KB) (RKB) to Mean Sea Level	4641.00ft
Vertical Reference Pt	RIG (17'KB) (RKB)	RIG (17'KB) (RKB) to Mud Line at Slot (SLOT#18 STATE ANTELOPE J14-2-14XRLNB (758'FSL & 811'FWL, SEC.02))	4641.00ft
MD Reference Pt	RIG (17'KB) (RKB)	Section Origin	N 0.00, E 0.00 ft
Field Vertical Reference	Mean Sea Level	Section Azimuth	178.17°



Planned Wellpath Report

STATE ANTELOPE J14-2-14XRLNB PWP (REV-A.0)

Page 2 of 10



REFERENCE WELLPATH IDENTIFICATION			
Operator	BONANZA CREEK OIL COMPANY	Slot	SLOT#18 STATE ANTELOPE J14-2-14XRLNB (758'FSL & 811'FWL, SEC.02)
Area	COLORADO	Well	STATE ANTELOPE J14-2-14XRLNB
Field	WELD COUNTY	Wellbore	STATE ANTELOPE J14-2-14XRLNB PWB
Facility	SEC.02-T5N-R62W		

WELLPATH DATA (177 stations) † = interpolated/extrapolated station										
MD [ft]	Inclination [°]	Azimuth [°]	TVD [ft]	Vert Sect [ft]	North [ft]	East [ft]	Latitude	Longitude	DLS [°/100ft]	Comments
0.00†	0.000	55.681	0.00	0.00	0.00	0.00	40°25'26.966"N	104°17'49.597"W	0.00	
17.00	0.000	55.681	17.00	0.00	0.00	0.00	40°25'26.966"N	104°17'49.597"W	0.00	Tie On
117.00†	0.000	55.681	117.00	0.00	0.00	0.00	40°25'26.966"N	104°17'49.597"W	0.00	
217.00†	0.000	55.681	217.00	0.00	0.00	0.00	40°25'26.966"N	104°17'49.597"W	0.00	
317.00†	0.000	55.681	317.00	0.00	0.00	0.00	40°25'26.966"N	104°17'49.597"W	0.00	
417.00†	0.000	55.681	417.00	0.00	0.00	0.00	40°25'26.966"N	104°17'49.597"W	0.00	
517.00†	0.000	55.681	517.00	0.00	0.00	0.00	40°25'26.966"N	104°17'49.597"W	0.00	
617.00†	0.000	55.681	617.00	0.00	0.00	0.00	40°25'26.966"N	104°17'49.597"W	0.00	
717.00†	0.000	55.681	717.00	0.00	0.00	0.00	40°25'26.966"N	104°17'49.597"W	0.00	
817.00†	0.000	55.681	817.00	0.00	0.00	0.00	40°25'26.966"N	104°17'49.597"W	0.00	
917.00†	0.000	55.681	917.00	0.00	0.00	0.00	40°25'26.966"N	104°17'49.597"W	0.00	
1017.00†	0.000	55.681	1017.00	0.00	0.00	0.00	40°25'26.966"N	104°17'49.597"W	0.00	
1117.00†	0.000	55.681	1117.00	0.00	0.00	0.00	40°25'26.966"N	104°17'49.597"W	0.00	
1217.00†	0.000	55.681	1217.00	0.00	0.00	0.00	40°25'26.966"N	104°17'49.597"W	0.00	
1317.00†	0.000	55.681	1317.00	0.00	0.00	0.00	40°25'26.966"N	104°17'49.597"W	0.00	
1417.00†	0.000	55.681	1417.00	0.00	0.00	0.00	40°25'26.966"N	104°17'49.597"W	0.00	
1517.00†	0.000	55.681	1517.00	0.00	0.00	0.00	40°25'26.966"N	104°17'49.597"W	0.00	
1617.00†	0.000	55.681	1617.00	0.00	0.00	0.00	40°25'26.966"N	104°17'49.597"W	0.00	
1717.00†	0.000	55.681	1717.00	0.00	0.00	0.00	40°25'26.966"N	104°17'49.597"W	0.00	
1817.00†	0.000	55.681	1817.00	0.00	0.00	0.00	40°25'26.966"N	104°17'49.597"W	0.00	
1917.00†	0.000	55.681	1917.00	0.00	0.00	0.00	40°25'26.966"N	104°17'49.597"W	0.00	
2000.00	0.000	55.681	2000.00	0.00	0.00	0.00	40°25'26.966"N	104°17'49.597"W	0.00	End of Tangent
2017.00†	0.340	55.681	2017.00	-0.03	0.03	0.04	40°25'26.966"N	104°17'49.596"W	2.00	
2117.00†	2.340	55.681	2116.97	-1.28	1.35	1.97	40°25'26.979"N	104°17'49.571"W	2.00	
2217.00†	4.340	55.681	2216.79	-4.41	4.63	6.78	40°25'27.012"N	104°17'49.509"W	2.00	
2229.16	4.583	55.681	2228.91	-4.92	5.16	7.57	40°25'27.017"N	104°17'49.499"W	2.00	End of Build (XS)
2317.00†	4.583	55.681	2316.47	-8.69	9.12	13.36	40°25'27.056"N	104°17'49.424"W	0.00	
2417.00†	4.583	55.681	2416.16	-12.98	13.63	19.96	40°25'27.101"N	104°17'49.339"W	0.00	
2517.00†	4.583	55.681	2515.84	-17.27	18.13	26.56	40°25'27.145"N	104°17'49.254"W	0.00	
2617.00†	4.583	55.681	2615.52	-21.57	22.64	33.16	40°25'27.190"N	104°17'49.168"W	0.00	



Planned Wellpath Report

STATE ANTELOPE J14-2-14XRLNB PWP (REV-A.0)

Page 3 of 10



REFERENCE WELLPATH IDENTIFICATION			
Operator	BONANZA CREEK OIL COMPANY	Slot	SLOT#18 STATE ANTELOPE J14-2-14XRLNB (758'FSL & 811'FWL, SEC.02)
Area	COLORADO	Well	STATE ANTELOPE J14-2-14XRLNB
Field	WELD COUNTY	Wellbore	STATE ANTELOPE J14-2-14XRLNB PWB
Facility	SEC.02-T5N-R62W		

WELLPATH DATA (177 stations) † = interpolated/extrapolated station

MD [ft]	Inclination [°]	Azimuth [°]	TVD [ft]	Vert Sect [ft]	North [ft]	East [ft]	Latitude	Longitude	DLS [°/100ft]	Comments
2717.00†	4.583	55.681	2715.20	-25.86	27.14	39.76	40°25'27.234"N	104°17'49.083"W	0.00	
2817.00†	4.583	55.681	2814.88	-30.15	31.65	46.36	40°25'27.279"N	104°17'48.998"W	0.00	
2917.00†	4.583	55.681	2914.56	-34.44	36.15	52.96	40°25'27.323"N	104°17'48.912"W	0.00	
3017.00†	4.583	55.681	3014.24	-38.73	40.66	59.56	40°25'27.368"N	104°17'48.827"W	0.00	
3117.00†	4.583	55.681	3113.92	-43.03	45.16	66.16	40°25'27.412"N	104°17'48.742"W	0.00	
3217.00†	4.583	55.681	3213.60	-47.32	49.67	72.76	40°25'27.457"N	104°17'48.656"W	0.00	
3317.00†	4.583	55.681	3313.28	-51.61	54.17	79.36	40°25'27.501"N	104°17'48.571"W	0.00	
3417.00†	4.583	55.681	3412.96	-55.90	58.68	85.96	40°25'27.546"N	104°17'48.486"W	0.00	
3517.00†	4.583	55.681	3512.64	-60.20	63.18	92.56	40°25'27.590"N	104°17'48.400"W	0.00	
3617.00†	4.583	55.681	3612.32	-64.49	67.69	99.16	40°25'27.635"N	104°17'48.315"W	0.00	
3717.00†	4.583	55.681	3712.00	-68.78	72.19	105.76	40°25'27.679"N	104°17'48.230"W	0.00	
3817.00†	4.583	55.681	3811.68	-73.07	76.70	112.35	40°25'27.724"N	104°17'48.144"W	0.00	
3917.00†	4.583	55.681	3911.36	-77.36	81.20	118.95	40°25'27.768"N	104°17'48.059"W	0.00	
4017.00†	4.583	55.681	4011.04	-81.66	85.71	125.55	40°25'27.813"N	104°17'47.974"W	0.00	
4117.00†	4.583	55.681	4110.72	-85.95	90.21	132.15	40°25'27.857"N	104°17'47.888"W	0.00	
4217.00†	4.583	55.681	4210.40	-90.24	94.72	138.75	40°25'27.902"N	104°17'47.803"W	0.00	
4317.00†	4.583	55.681	4310.08	-94.53	99.22	145.35	40°25'27.946"N	104°17'47.718"W	0.00	
4417.00†	4.583	55.681	4409.76	-98.82	103.73	151.95	40°25'27.991"N	104°17'47.632"W	0.00	
4517.00†	4.583	55.681	4509.44	-103.12	108.23	158.55	40°25'28.036"N	104°17'47.547"W	0.00	
4617.00†	4.583	55.681	4609.12	-107.41	112.74	165.15	40°25'28.080"N	104°17'47.462"W	0.00	
4717.00†	4.583	55.681	4708.80	-111.70	117.24	171.75	40°25'28.125"N	104°17'47.376"W	0.00	
4817.00†	4.583	55.681	4808.48	-115.99	121.75	178.35	40°25'28.169"N	104°17'47.291"W	0.00	
4917.00†	4.583	55.681	4908.16	-120.28	126.25	184.95	40°25'28.214"N	104°17'47.206"W	0.00	
5017.00†	4.583	55.681	5007.84	-124.58	130.76	191.55	40°25'28.258"N	104°17'47.120"W	0.00	
5117.00†	4.583	55.681	5107.52	-128.87	135.26	198.15	40°25'28.303"N	104°17'47.035"W	0.00	
5217.00†	4.583	55.681	5207.20	-133.16	139.77	204.75	40°25'28.347"N	104°17'46.950"W	0.00	
5317.00†	4.583	55.681	5306.88	-137.45	144.27	211.35	40°25'28.392"N	104°17'46.864"W	0.00	
5417.00†	4.583	55.681	5406.56	-141.74	148.78	217.95	40°25'28.436"N	104°17'46.779"W	0.00	
5517.00†	4.583	55.681	5506.24	-146.04	153.28	224.55	40°25'28.481"N	104°17'46.694"W	0.00	
5614.89	4.583	55.681	5603.82	-150.24	157.69	231.01	40°25'28.524"N	104°17'46.610"W	0.00	End of Tangent (XS)



Planned Wellpath Report

STATE ANTELOPE J14-2-14XRLNB PWP (REV-A.0)

Page 4 of 10



REFERENCE WELLPATH IDENTIFICATION			
Operator	BONANZA CREEK OIL COMPANY	Slot	SLOT#18 STATE ANTELOPE J14-2-14XRLNB (758'FSL & 811'FWL, SEC.02)
Area	COLORADO	Well	STATE ANTELOPE J14-2-14XRLNB
Field	WELD COUNTY	Wellbore	STATE ANTELOPE J14-2-14XRLNB PWB
Facility	SEC.02-T5N-R62W		

WELLPATH DATA (177 stations) † = interpolated/extrapolated station										
MD [ft]	Inclination [°]	Azimuth [°]	TVD [ft]	Vert Sect [ft]	North [ft]	East [ft]	Latitude	Longitude	DLS [°/100ft]	Comments
5617.00†	4.469	57.928	5605.92	-150.32	157.78	231.15	40°25'28.525"N	104°17'46.608"W	10.00	
5717.00†	8.545	153.307	5705.47	-145.53	153.20	237.80	40°25'28.480"N	104°17'46.522"W	10.00	
5817.00†	18.049	167.808	5802.70	-123.50	131.37	244.43	40°25'28.264"N	104°17'46.437"W	10.00	
5917.00†	27.896	172.369	5894.66	-84.89	92.94	250.82	40°25'27.884"N	104°17'46.354"W	10.00	
6017.00†	37.819	174.672	5978.56	-30.88	39.09	256.79	40°25'27.352"N	104°17'46.277"W	10.00	
6117.00†	47.771	176.127	6051.85	36.90	-28.54	262.15	40°25'26.684"N	104°17'46.207"W	10.00	
6217.00†	57.736	177.182	6112.30	116.37	-107.91	266.74	40°25'25.900"N	104°17'46.148"W	10.00	
6317.00†	67.708	178.026	6158.08	205.13	-196.60	270.42	40°25'25.023"N	104°17'46.100"W	10.00	
6417.00†	77.684	178.757	6187.78	300.49	-291.92	273.08	40°25'24.081"N	104°17'46.066"W	10.00	
6517.00†	87.661	179.433	6200.52	399.53	-390.96	274.64	40°25'23.103"N	104°17'46.046"W	10.00	
6540.44	90.000	179.589	6201.00†	422.96	-414.39	274.84	40°25'22.871"N	104°17'46.043"W	10.00	End of 3D Arc (XS)
6617.00†	90.000	179.589	6201.00	499.49	-490.95	275.39	40°25'22.115"N	104°17'46.036"W	0.00	
6717.00†	90.000	179.589	6201.00	599.46	-590.95	276.11	40°25'21.126"N	104°17'46.027"W	0.00	
6817.00†	90.000	179.589	6201.00	699.43	-690.95	276.83	40°25'20.138"N	104°17'46.018"W	0.00	
6917.00†	90.000	179.589	6201.00	799.40	-790.94	277.54	40°25'19.150"N	104°17'46.008"W	0.00	
7017.00†	90.000	179.589	6201.00	899.37	-890.94	278.26	40°25'18.162"N	104°17'45.999"W	0.00	
7117.00†	90.000	179.589	6201.00	999.34	-990.94	278.98	40°25'17.174"N	104°17'45.990"W	0.00	
7217.00†	90.000	179.589	6201.00	1099.31	-1090.94	279.70	40°25'16.186"N	104°17'45.981"W	0.00	
7317.00†	90.000	179.589	6201.00	1199.28	-1190.93	280.41	40°25'15.198"N	104°17'45.971"W	0.00	
7417.00†	90.000	179.589	6201.00	1299.25	-1290.93	281.13	40°25'14.210"N	104°17'45.962"W	0.00	
7517.00†	90.000	179.589	6201.00	1399.22	-1390.93	281.85	40°25'13.221"N	104°17'45.953"W	0.00	
7617.00†	90.000	179.589	6201.00	1499.19	-1490.93	282.57	40°25'12.233"N	104°17'45.944"W	0.00	
7717.00†	90.000	179.589	6201.00	1599.16	-1590.92	283.28	40°25'11.245"N	104°17'45.934"W	0.00	
7817.00†	90.000	179.589	6201.00	1699.13	-1690.92	284.00	40°25'10.257"N	104°17'45.925"W	0.00	
7917.00†	90.000	179.589	6201.00	1799.10	-1790.92	284.72	40°25'09.269"N	104°17'45.916"W	0.00	
8017.00†	90.000	179.589	6201.00	1899.07	-1890.92	285.44	40°25'08.281"N	104°17'45.907"W	0.00	
8117.00†	90.000	179.589	6201.00	1999.03	-1990.91	286.15	40°25'07.293"N	104°17'45.897"W	0.00	
8217.00†	90.000	179.589	6201.00	2099.00	-2090.91	286.87	40°25'06.304"N	104°17'45.888"W	0.00	
8317.00†	90.000	179.589	6201.00	2198.97	-2190.91	287.59	40°25'05.316"N	104°17'45.879"W	0.00	
8417.00†	90.000	179.589	6201.00	2298.94	-2290.91	288.31	40°25'04.328"N	104°17'45.870"W	0.00	



Planned Wellpath Report

STATE ANTELOPE J14-2-14XRLNB PWP (REV-A.0)

Page 5 of 10



REFERENCE WELLPATH IDENTIFICATION			
Operator	BONANZA CREEK OIL COMPANY	Slot	SLOT#18 STATE ANTELOPE J14-2-14XRLNB (758'FSL & 811'FWL, SEC.02)
Area	COLORADO	Well	STATE ANTELOPE J14-2-14XRLNB
Field	WELD COUNTY	Wellbore	STATE ANTELOPE J14-2-14XRLNB PWB
Facility	SEC.02-T5N-R62W		

WELLPATH DATA (177 stations) † = interpolated/extrapolated station										
MD [ft]	Inclination [°]	Azimuth [°]	TVD [ft]	Vert Sect [ft]	North [ft]	East [ft]	Latitude	Longitude	DLS [°/100ft]	Comments
8517.00†	90.000	179.589	6201.00	2398.91	-2390.90	289.02	40°25'03.340"N	104°17'45.860"W	0.00	
8617.00†	90.000	179.589	6201.00	2498.88	-2490.90	289.74	40°25'02.352"N	104°17'45.851"W	0.00	
8717.00†	90.000	179.589	6201.00	2598.85	-2590.90	290.46	40°25'01.364"N	104°17'45.842"W	0.00	
8817.00†	90.000	179.589	6201.00	2698.82	-2690.90	291.18	40°25'00.376"N	104°17'45.833"W	0.00	
8917.00†	90.000	179.589	6201.00	2798.79	-2790.89	291.89	40°24'59.387"N	104°17'45.823"W	0.00	
9017.00†	90.000	179.589	6201.00	2898.76	-2890.89	292.61	40°24'58.399"N	104°17'45.814"W	0.00	
9117.00†	90.000	179.589	6201.00	2998.73	-2990.89	293.33	40°24'57.411"N	104°17'45.805"W	0.00	
9217.00†	90.000	179.589	6201.00	3098.70	-3090.88	294.05	40°24'56.423"N	104°17'45.795"W	0.00	
9317.00†	90.000	179.589	6201.00	3198.67	-3190.88	294.76	40°24'55.435"N	104°17'45.786"W	0.00	
9417.00†	90.000	179.589	6201.00	3298.64	-3290.88	295.48	40°24'54.447"N	104°17'45.777"W	0.00	
9517.00†	90.000	179.589	6201.00	3398.61	-3390.88	296.20	40°24'53.459"N	104°17'45.768"W	0.00	
9617.00†	90.000	179.589	6201.00	3498.57	-3490.87	296.92	40°24'52.471"N	104°17'45.758"W	0.00	
9717.00†	90.000	179.589	6201.00	3598.54	-3590.87	297.63	40°24'51.482"N	104°17'45.749"W	0.00	
9817.00†	90.000	179.589	6201.00	3698.51	-3690.87	298.35	40°24'50.494"N	104°17'45.740"W	0.00	
9917.00†	90.000	179.589	6201.00	3798.48	-3790.87	299.07	40°24'49.506"N	104°17'45.731"W	0.00	
10017.00†	90.000	179.589	6201.00	3898.45	-3890.86	299.79	40°24'48.518"N	104°17'45.721"W	0.00	
10117.00†	90.000	179.589	6201.00	3998.42	-3990.86	300.50	40°24'47.530"N	104°17'45.712"W	0.00	
10217.00†	90.000	179.589	6201.00	4098.39	-4090.86	301.22	40°24'46.542"N	104°17'45.703"W	0.00	
10317.00†	90.000	179.589	6201.00	4198.36	-4190.86	301.94	40°24'45.554"N	104°17'45.694"W	0.00	
10417.00†	90.000	179.589	6201.00	4298.33	-4290.85	302.66	40°24'44.565"N	104°17'45.684"W	0.00	
10517.00†	90.000	179.589	6201.00	4398.30	-4390.85	303.37	40°24'43.577"N	104°17'45.675"W	0.00	
10617.00†	90.000	179.589	6201.00	4498.27	-4490.85	304.09	40°24'42.589"N	104°17'45.666"W	0.00	
10717.00†	90.000	179.589	6201.00	4598.24	-4590.85	304.81	40°24'41.601"N	104°17'45.657"W	0.00	
10817.00†	90.000	179.589	6201.00	4698.21	-4690.84	305.53	40°24'40.613"N	104°17'45.647"W	0.00	
10917.00†	90.000	179.589	6201.00	4798.18	-4790.84	306.24	40°24'39.625"N	104°17'45.638"W	0.00	
11017.00†	90.000	179.589	6201.00	4898.15	-4890.84	306.96	40°24'38.637"N	104°17'45.629"W	0.00	
11117.00†	90.000	179.589	6201.00	4998.12	-4990.84	307.68	40°24'37.648"N	104°17'45.620"W	0.00	
11217.00†	90.000	179.589	6201.00	5098.08	-5090.83	308.40	40°24'36.660"N	104°17'45.610"W	0.00	
11317.00†	90.000	179.589	6201.00	5198.05	-5190.83	309.11	40°24'35.672"N	104°17'45.601"W	0.00	
11417.00†	90.000	179.589	6201.00	5298.02	-5290.83	309.83	40°24'34.684"N	104°17'45.592"W	0.00	



Planned Wellpath Report

STATE ANTELOPE J14-2-14XRLNB PWP (REV-A.0)

Page 6 of 10



REFERENCE WELLPATH IDENTIFICATION			
Operator	BONANZA CREEK OIL COMPANY	Slot	SLOT#18 STATE ANTELOPE J14-2-14XRLNB (758'FSL & 811'FWL, SEC.02)
Area	COLORADO	Well	STATE ANTELOPE J14-2-14XRLNB
Field	WELD COUNTY	Wellbore	STATE ANTELOPE J14-2-14XRLNB PWB
Facility	SEC.02-T5N-R62W		

WELLPATH DATA (177 stations) † = interpolated/extrapolated station										
MD [ft]	Inclination [°]	Azimuth [°]	TVD [ft]	Vert Sect [ft]	North [ft]	East [ft]	Latitude	Longitude	DLS [°/100ft]	Comments
11517.00†	90.000	179.589	6201.00	5397.99	-5390.83	310.55	40°24'33.696"N	104°17'45.582"W	0.00	
11617.00†	90.000	179.589	6201.00	5497.96	-5490.82	311.27	40°24'32.708"N	104°17'45.573"W	0.00	
11717.00†	90.000	179.589	6201.00	5597.93	-5590.82	311.98	40°24'31.720"N	104°17'45.564"W	0.00	
11817.00†	90.000	179.589	6201.00	5697.90	-5690.82	312.70	40°24'30.732"N	104°17'45.555"W	0.00	
11917.00†	90.000	179.589	6201.00	5797.87	-5790.82	313.42	40°24'29.743"N	104°17'45.545"W	0.00	
12017.00†	90.000	179.589	6201.00	5897.84	-5890.81	314.14	40°24'28.755"N	104°17'45.536"W	0.00	
12117.00†	90.000	179.589	6201.00	5997.81	-5990.81	314.85	40°24'27.767"N	104°17'45.527"W	0.00	
12217.00†	90.000	179.589	6201.00	6097.78	-6090.81	315.57	40°24'26.779"N	104°17'45.518"W	0.00	
12317.00†	90.000	179.589	6201.00	6197.75	-6190.81	316.29	40°24'25.791"N	104°17'45.508"W	0.00	
12417.00†	90.000	179.589	6201.00	6297.72	-6290.80	317.01	40°24'24.803"N	104°17'45.499"W	0.00	
12517.00†	90.000	179.589	6201.00	6397.69	-6390.80	317.72	40°24'23.815"N	104°17'45.490"W	0.00	
12617.00†	90.000	179.589	6201.00	6497.66	-6490.80	318.44	40°24'22.826"N	104°17'45.481"W	0.00	
12717.00†	90.000	179.589	6201.00	6597.62	-6590.79	319.16	40°24'21.838"N	104°17'45.471"W	0.00	
12817.00†	90.000	179.589	6201.00	6697.59	-6690.79	319.88	40°24'20.850"N	104°17'45.462"W	0.00	
12917.00†	90.000	179.589	6201.00	6797.56	-6790.79	320.59	40°24'19.862"N	104°17'45.453"W	0.00	
13017.00†	90.000	179.589	6201.00	6897.53	-6890.79	321.31	40°24'18.874"N	104°17'45.444"W	0.00	
13117.00†	90.000	179.589	6201.00	6997.50	-6990.78	322.03	40°24'17.886"N	104°17'45.434"W	0.00	
13217.00†	90.000	179.589	6201.00	7097.47	-7090.78	322.75	40°24'16.898"N	104°17'45.425"W	0.00	
13317.00†	90.000	179.589	6201.00	7197.44	-7190.78	323.46	40°24'15.909"N	104°17'45.416"W	0.00	
13417.00†	90.000	179.589	6201.00	7297.41	-7290.78	324.18	40°24'14.921"N	104°17'45.407"W	0.00	
13517.00†	90.000	179.589	6201.00	7397.38	-7390.77	324.90	40°24'13.933"N	104°17'45.397"W	0.00	
13617.00†	90.000	179.589	6201.00	7497.35	-7490.77	325.62	40°24'12.945"N	104°17'45.388"W	0.00	
13717.00†	90.000	179.589	6201.00	7597.32	-7590.77	326.33	40°24'11.957"N	104°17'45.379"W	0.00	
13817.00†	90.000	179.589	6201.00	7697.29	-7690.77	327.05	40°24'10.969"N	104°17'45.370"W	0.00	
13917.00†	90.000	179.589	6201.00	7797.26	-7790.76	327.77	40°24'09.981"N	104°17'45.360"W	0.00	
14017.00†	90.000	179.589	6201.00	7897.23	-7890.76	328.49	40°24'08.992"N	104°17'45.351"W	0.00	
14117.00†	90.000	179.589	6201.00	7997.20	-7990.76	329.20	40°24'08.004"N	104°17'45.342"W	0.00	
14217.00†	90.000	179.589	6201.00	8097.17	-8090.76	329.92	40°24'07.016"N	104°17'45.333"W	0.00	
14317.00†	90.000	179.589	6201.00	8197.13	-8190.75	330.64	40°24'06.028"N	104°17'45.323"W	0.00	
14417.00†	90.000	179.589	6201.00	8297.10	-8290.75	331.36	40°24'05.040"N	104°17'45.314"W	0.00	



Planned Wellpath Report

STATE ANTELOPE J14-2-14XRLNB PWP (REV-A.0)

Page 7 of 10



REFERENCE WELLPATH IDENTIFICATION			
Operator	BONANZA CREEK OIL COMPANY	Slot	SLOT#18 STATE ANTELOPE J14-2-14XRLNB (758'FSL & 811'FWL, SEC.02)
Area	COLORADO	Well	STATE ANTELOPE J14-2-14XRLNB
Field	WELD COUNTY	Wellbore	STATE ANTELOPE J14-2-14XRLNB PWB
Facility	SEC.02-T5N-R62W		

WELLPATH DATA (177 stations) † = interpolated/extrapolated station										
MD [ft]	Inclination [°]	Azimuth [°]	TVD [ft]	Vert Sect [ft]	North [ft]	East [ft]	Latitude	Longitude	DLS [°/100ft]	Comments
14517.00†	90.000	179.589	6201.00	8397.07	-8390.75	332.07	40°24'04.052"N	104°17'45.305"W	0.00	
14617.00†	90.000	179.589	6201.00	8497.04	-8490.75	332.79	40°24'03.064"N	104°17'45.296"W	0.00	
14717.00†	90.000	179.589	6201.00	8597.01	-8590.74	333.51	40°24'02.076"N	104°17'45.286"W	0.00	
14817.00†	90.000	179.589	6201.00	8696.98	-8690.74	334.23	40°24'01.087"N	104°17'45.277"W	0.00	
14917.00†	90.000	179.589	6201.00	8796.95	-8790.74	334.94	40°24'00.099"N	104°17'45.268"W	0.00	
15017.00†	90.000	179.589	6201.00	8896.92	-8890.74	335.66	40°23'59.111"N	104°17'45.258"W	0.00	
15117.00†	90.000	179.589	6201.00	8996.89	-8990.73	336.38	40°23'58.123"N	104°17'45.249"W	0.00	
15217.00†	90.000	179.589	6201.00	9096.86	-9090.73	337.10	40°23'57.135"N	104°17'45.240"W	0.00	
15317.00†	90.000	179.589	6201.00	9196.83	-9190.73	337.81	40°23'56.147"N	104°17'45.231"W	0.00	
15417.00†	90.000	179.589	6201.00	9296.80	-9290.73	338.53	40°23'55.159"N	104°17'45.221"W	0.00	
15517.00†	90.000	179.589	6201.00	9396.77	-9390.72	339.25	40°23'54.170"N	104°17'45.212"W	0.00	
15617.00†	90.000	179.589	6201.00	9496.74	-9490.72	339.97	40°23'53.182"N	104°17'45.203"W	0.00	
15717.00†	90.000	179.589	6201.00	9596.71	-9590.72	340.68	40°23'52.194"N	104°17'45.194"W	0.00	
15817.00†	90.000	179.589	6201.00	9696.67	-9690.72	341.40	40°23'51.206"N	104°17'45.184"W	0.00	
15917.00†	90.000	179.589	6201.00	9796.64	-9790.71	342.12	40°23'50.218"N	104°17'45.175"W	0.00	
16017.00†	90.000	179.589	6201.00	9896.61	-9890.71	342.84	40°23'49.230"N	104°17'45.166"W	0.00	
16117.00†	90.000	179.589	6201.00	9996.58	-9990.71	343.55	40°23'48.242"N	104°17'45.157"W	0.00	
16217.00†	90.000	179.589	6201.00	10096.55	-10090.70	344.27	40°23'47.253"N	104°17'45.147"W	0.00	
16317.00†	90.000	179.589	6201.00	10196.52	-10190.70	344.99	40°23'46.265"N	104°17'45.138"W	0.00	
16417.00†	90.000	179.589	6201.00	10296.49	-10290.70	345.71	40°23'45.277"N	104°17'45.129"W	0.00	
16517.00†	90.000	179.589	6201.00	10396.46	-10390.70	346.42	40°23'44.289"N	104°17'45.120"W	0.00	
16617.00†	90.000	179.589	6201.00	10496.43	-10490.69	347.14	40°23'43.301"N	104°17'45.110"W	0.00	
16717.00†	90.000	179.589	6201.00	10596.40	-10590.69	347.86	40°23'42.313"N	104°17'45.101"W	0.00	
16817.00†	90.000	179.589	6201.00	10696.37	-10690.69	348.58	40°23'41.325"N	104°17'45.092"W	0.00	
16917.00†	90.000	179.589	6201.00	10796.34	-10790.69	349.29	40°23'40.336"N	104°17'45.083"W	0.00	
17017.00†	90.000	179.589	6201.00	10896.31	-10890.68	350.01	40°23'39.348"N	104°17'45.073"W	0.00	
17102.65	90.000	179.589	6201.00 ²	10981.93	-10976.33	350.62	40°23'38.502"N	104°17'45.065"W	0.00	End of Tangent (XS)



Planned Wellpath Report

STATE ANTELOPE J14-2-14XRLNB PWP (REV-A.0)

Page 8 of 10



REFERENCE WELLPATH IDENTIFICATION			
Operator	BONANZA CREEK OIL COMPANY	Slot	SLOT#18 STATE ANTELOPE J14-2-14XRLNB (758'FSL & 811'FWL, SEC.02)
Area	COLORADO	Well	STATE ANTELOPE J14-2-14XRLNB
Field	WELD COUNTY	Wellbore	STATE ANTELOPE J14-2-14XRLNB PWB
Facility	SEC.02-T5N-R62W		

HOLE & CASING SECTIONS									
- Ref Wellbore: STATE ANTELOPE J14-2-14XRLNB PWB					Ref Wellpath: STATE ANTELOPE J14-2-14XRLNB PWP (REV-A.0)				
String/Diameter	Start MD [ft]	End MD [ft]	Interval [ft]	Start TVD [ft]	End TVD [ft]	Start N/S [ft]	Start E/W [ft]	End N/S [ft]	End E/W [ft]
9.625in Casing Surface	17.00	1550.00	1533.00	17.00	1550.00	0.00	0.00	0.00	0.00
8.5in Open Hole	1550.00	17102.65	15552.65	1550.00	6201.00	0.00	0.00	-10976.33	350.62

TARGETS									
Name	MD [ft]	TVD [ft]	North [ft]	East [ft]	Grid East [US ft]	Grid North [US ft]	Latitude	Longitude	Shape
*SEC.02-T05N-R62W		17.00	3194.23	-481.22	3334363.11	1402819.53	40°25'58.530"N	104°17'55.820"W	polygon
*SEC.11-T05N-R62W		17.00	-10976.34	350.66	3335387.09	1388662.13	40°23'38.502"N	104°17'45.065"W	polygon
*SEC.14-T05N-R62W		17.00	-10976.34	350.66	3335387.09	1388662.13	40°23'38.502"N	104°17'45.065"W	polygon
*SEC.11/14-T05N-R62W HARDLINES (460'SETBACK)		6201.00	-10976.34	350.66	3335387.09	1388662.13	40°23'38.502"N	104°17'45.065"W	polygon
2) STATE ANTELOPE J14-2-14XRLNB BHL (470'FSL&1057'FWL,SEC.14)	17102.65	6201.00	-10976.33	350.62	3335387.06	1388662.13	40°23'38.502"N	104°17'45.065"W	point
1) STATE ANTELOPE J14-2-14XRLNB LP (330'FSL&1085'FWL,SEC.02)	6540.44	6201.00	-414.39	274.84	3335168.02	1399221.64	40°25'22.871"N	104°17'46.043"W	point
STATE ANTELOPE J14-2-14XRLNB MP (0'FSL&1081'FWL,SEC.11)		6201.00	-6095.03	277.90	3335248.13	1393541.80	40°24'26.737"N	104°17'46.005"W	point



Planned Wellpath Report

STATE ANTELOPE J14-2-14XRLNB PWP (REV-A.0)

Page 9 of 10



REFERENCE WELLPATH IDENTIFICATION			
Operator	BONANZA CREEK OIL COMPANY	Slot	SLOT#18 STATE ANTELOPE J14-2-14XRLNB (758'FSL & 811'FWL, SEC.02)
Area	COLORADO	Well	STATE ANTELOPE J14-2-14XRLNB
Field	WELD COUNTY	Wellbore	STATE ANTELOPE J14-2-14XRLNB PWB
Facility	SEC.02-T5N-R62W		

SURVEY PROGRAM - Ref Wellbore: STATE ANTELOPE J14-2-14XRLNB PWB Ref Wellpath: STATE ANTELOPE J14-2-14XRLNB PWP (REV-A.0)				
Start MD [ft]	End MD [ft]	Positional Uncertainty Model	Log Name/Comment	Wellbore
17.00	1550.00	Custom BHI NaviTrak (Standard Rotating+Axial Corr) (Rockies 0.03Gt model)		STATE ANTELOPE J14-2-14XRLNB PWB
1550.00	17108.42	Custom BHI AutoTrak Curve (Axial Corr, Short spacing) (Rockies 0.03Gt model)		STATE ANTELOPE J14-2-14XRLNB PWB



Planned Wellpath Report

STATE ANTELOPE J14-2-14XRLNB PWP (REV-A.0)

Page 10 of 10



REFERENCE WELLPATH IDENTIFICATION			
Operator	BONANZA CREEK OIL COMPANY	Slot	SLOT#18 STATE ANTELOPE J14-2-14XRLNB (758'FSL & 811'FWL, SEC.02)
Area	COLORADO	Well	STATE ANTELOPE J14-2-14XRLNB
Field	WELD COUNTY	Wellbore	STATE ANTELOPE J14-2-14XRLNB PWB
Facility	SEC.02-T5N-R62W		

DESIGN COMMENTS				
MD [ft]	Inclination [°]	Azimuth [°]	TVD [ft]	Comment
17.00	0.000	55.681	17.00	Tie On
2000.00	0.000	55.681	2000.00	End of Tangent
2229.16	4.583	55.681	2228.91	End of Build (XS)
5614.89	4.583	55.681	5603.82	End of Tangent (XS)
6540.44	90.000	179.589	6201.00	End of 3D Arc (XS)
17102.65	90.000	179.589	6201.00	End of Tangent (XS)