

BONANZA CREEK OIL COMPANY

Location: COLORADO Slot: SLOT#04 PRONGHORN 24-7-6XRLNB (428'FN & 1445'FWL, SEC.18)
Field: WELD COUNTY Well: PRONGHORN 24-7-6XRLNB
Facility: SEC.18-T05N-R61W Wellbore: PRONGHORN 24-7-6XRLNB PWB

Plot reference wellpath is PRONGHORN 24-7-6XRLNB PWP (REV-A.0)

True vertical depths are referenced to RIG (17KB) (RKB)	* = Wellpath was transformed from a different geodetic datum
Measured depths are referenced to RIG (17KB) (RKB)	North Reference: True north
RIG (17KB) (RKB) to Mean Sea Level: 4582 feet	Scale: True distance
Mean Sea Level to Mud line (At Slot: SLOT#04 PRONGHORN 24-7-6XRLNB (428'FN & 1445'FWL, SEC.18)): 0 feet	Depths are in feet
Coordinates are in feet referenced to Slot	Created by: ingmjmr on 2018-02-08
	Database: Denver

Location Information

Facility Name			Grid East (US ft)	Grid North (US ft)	Latitude	Longitude
SEC.18-T05N-R61W			3346203.650	1303657.633	40°24'26.388"N	104°15'24.372"W
Slot	Local N (ft)	Local E (ft)	Grid East (US ft)	Grid North (US ft)	Latitude	Longitude
SLOT#04 PRONGHORN 24-7-6XRLNB (428'FN & 1445'FWL, SEC.18)	0.00	19.49	3346223.142	1303657.906	40°24'26.388"N	104°15'24.120"W
RIG (17KB) (RKB) to Mud line (At Slot: SLOT#04 PRONGHORN 24-7-6XRLNB (428'FN & 1445'FWL, SEC.18))					4582ft	
Mean Sea Level to Mud line (At Slot: SLOT#04 PRONGHORN 24-7-6XRLNB (428'FN & 1445'FWL, SEC.18))					0ft	
RIG (17KB) (RKB) to Mean Sea Level					4582ft	

Well Profile Data

Design Comment	MD (ft)	Inc (°)	Az (°)	TVD (ft)	Local N (ft)	Local E (ft)	DLS (°/100ft)	VS (ft)
Tie On	17.00	0.000	51.165	17.00	0.00	0.00	0.00	0.00
End of Tangent	2096.41	0.000	51.165	2096.41	0.00	0.00	0.00	0.00
End of Build (XS)	2546.41	9.000	51.165	2544.56	22.12	27.47	2.00	23.28
End of Tangent (XS)	5588.37	9.000	51.165	5549.07	320.52	398.15	0.00	337.33
End of 3D Arc (XS)	6432.15	90.000	359.941	6062.00	890.79	460.90	10.00	909.76
End of Tangent (XS)	16033.60	90.000	359.941	6062.00	10492.24	450.96	0.00	10501.93

Hole and Casing Sections

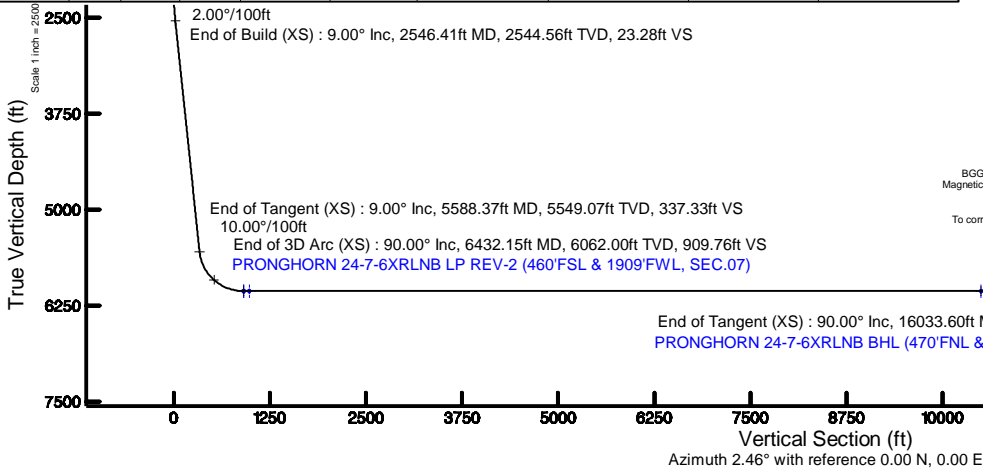
Name	Start MD (ft)	End MD (ft)	Interval (ft)	Start TVD (ft)	End TVD (ft)	Start Local N (ft)	Start Local E (ft)	End Local N (ft)	End Local E (ft)	Wellbore
9.625in Casing Surface	17.00	1550.00	1533.00	17.00	1550.00	0.00	0.00	0.00	0.00	PRONGHORN 24-7-6XRLNB PWB
8.5in Open Hole	1550.00	16033.60	14483.60	1550.00	6062.00	0.00	0.00	10492.24	450.97	PRONGHORN 24-7-6XRLNB PWB

Survey Program

Start MD (ft)	End MD (ft)	Tool	Model	Log Name/Comment	Wellbore
17.00	1550.00	BHI NavTrak	Custom BHI NavTrak (Standard Rotating-Axial Cor) (Rockies 0.03Gt model)		PRONGHORN 24-7-6XRLNB PWB
1550.00	16033.60	BHI AutoTrak Curve	Custom BHI AutoTrak Curve (Axial Cor, Short spacing) (Rockies 0.03Gt model)		PRONGHORN 24-7-6XRLNB PWB

Bottom Hole Location

MD (ft)	Inc (°)	Az (°)	TVD (ft)	Local N (ft)	Local E (ft)	Grid East (US ft)	Grid North (US ft)	Latitude	Longitude
16033.60	90.00	359.941	6062.00	10492.24	450.96	3346266.94	1404155.00	40°26'10.068"N	104°15'18.288"W



Scale 1 inch = 2500

Easting (ft)

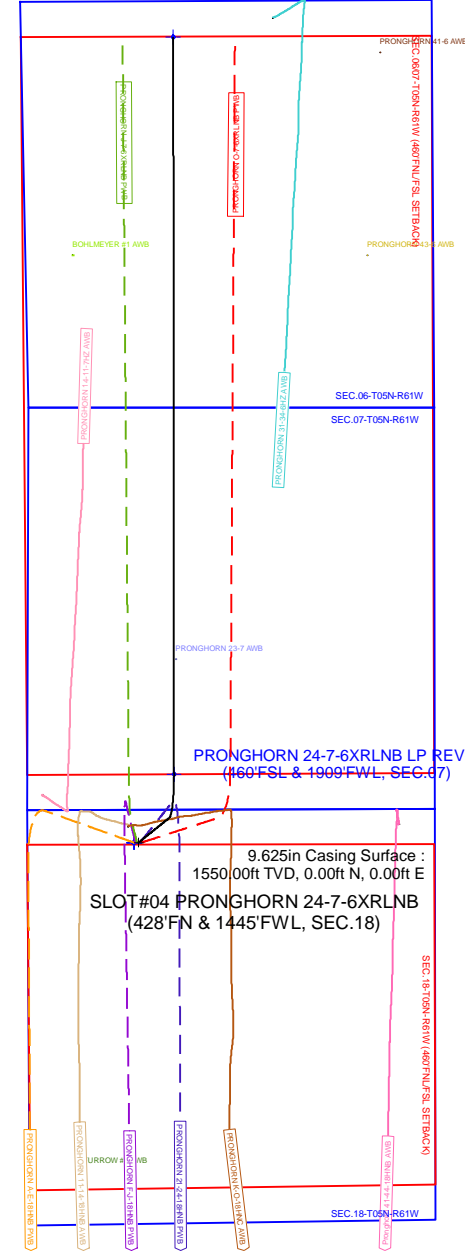
-2500

0

2500

5000

PRONGHORN 24-7-6XRLNB BHL
(470'FNL & 1980'FWL, SEC.06)



North (ft)

10000

7500

5000

2500

0

-2500

-5000



BGGM (1900.0 to 2019.0) Dip: 66.93° Field: 52420 nT
Magnetic North is 8.04 degrees East of True North (at 2/2/2018)

To correct azimuth from Magnetic to True add 8.04 degrees

Scale 1 inch = 2500



Planned Wellpath Report

PRONGHORN 24-7-6XRLNB PWP (REV-A.0)

Page 1 of 9



REFERENCE WELLPATH IDENTIFICATION

Operator	BONANZA CREEK OIL COMPANY	Slot	SLOT#04 PRONGHORN 24-7-6XRLNB (428'FN & 1445'FWL, SEC.18)
Area	COLORADO	Well	PRONGHORN 24-7-6XRLNB
Field	WELD COUNTY	Wellbore	PRONGHORN 24-7-6XRLNB PWB
Facility	SEC.18-T05N-R61W		

REPORT SETUP INFORMATION

Projection System	NAD83 / Lambert Colorado SP, Northern Zone (501), US feet	Software System	WellArchitect® 5.0
North Reference	True	User	Ingmjmr
Scale	0.999961	Report Generated	2/8/2018 at 10:01:22 AM
Convergence at slot	0.81° East	Database/Source file	Denver/PRONGHORN_24-7-6XRLNB_PWP__REV-A.0_.xml

WELLPATH LOCATION

	Local coordinates		Grid coordinates		Geographic coordinates	
	North[ft]	East[ft]	Easting[US ft]	Northing[US ft]	Latitude	Longitude
Slot Location	0.00	19.49	3346223.14	1393657.91	40°24'26.388"N	104°15'24.120"W
Facility Reference Pt			3346203.65	1393657.63	40°24'26.388"N	104°15'24.372"W
Field Reference Pt			3224525.77	1254425.87	40°01'44.400"N	104°41'53.556"W

WELLPATH DATUM

Calculation method	Minimum curvature	RIG (17'KB) (RKB) to Facility Vertical Datum	4582.00ft
Horizontal Reference Pt	Slot	RIG (17'KB) (RKB) to Mean Sea Level	4582.00ft
Vertical Reference Pt	RIG (17'KB) (RKB)	RIG (17'KB) (RKB) to Mud Line at Slot (SLOT#04 PRONGHORN 24-7-6XRLNB (428'FN & 1445'FWL, SEC.18))	4582.00ft
MD Reference Pt	RIG (17'KB) (RKB)	Section Origin	N 0.00, E 0.00 ft
Field Vertical Reference	Mean Sea Level	Section Azimuth	2.46°



Planned Wellpath Report

PRONGHORN 24-7-6XRLNB PWP (REV-A.0)

Page 2 of 9



REFERENCE WELLPATH IDENTIFICATION			
Operator	BONANZA CREEK OIL COMPANY	Slot	SLOT#04 PRONGHORN 24-7-6XRLNB (428'FN & 1445'FWL, SEC.18)
Area	COLORADO	Well	PRONGHORN 24-7-6XRLNB
Field	WELD COUNTY	Wellbore	PRONGHORN 24-7-6XRLNB PWB
Facility	SEC.18-T05N-R61W		

WELLPATH DATA (167 stations) † = interpolated/extrapolated station										
MD [ft]	Inclination [°]	Azimuth [°]	TVD [ft]	Vert Sect [ft]	North [ft]	East [ft]	Latitude	Longitude	DLS [°/100ft]	Comments
0.00†	0.000	51.165	0.00	0.00	0.00	0.00	40°24'26.388"N	104°15'24.120"W	0.00	
17.00	0.000	51.165	17.00	0.00	0.00	0.00	40°24'26.388"N	104°15'24.120"W	0.00	Tie On
117.00†	0.000	51.165	117.00	0.00	0.00	0.00	40°24'26.388"N	104°15'24.120"W	0.00	
217.00†	0.000	51.165	217.00	0.00	0.00	0.00	40°24'26.388"N	104°15'24.120"W	0.00	
317.00†	0.000	51.165	317.00	0.00	0.00	0.00	40°24'26.388"N	104°15'24.120"W	0.00	
417.00†	0.000	51.165	417.00	0.00	0.00	0.00	40°24'26.388"N	104°15'24.120"W	0.00	
517.00†	0.000	51.165	517.00	0.00	0.00	0.00	40°24'26.388"N	104°15'24.120"W	0.00	
617.00†	0.000	51.165	617.00	0.00	0.00	0.00	40°24'26.388"N	104°15'24.120"W	0.00	
717.00†	0.000	51.165	717.00	0.00	0.00	0.00	40°24'26.388"N	104°15'24.120"W	0.00	
817.00†	0.000	51.165	817.00	0.00	0.00	0.00	40°24'26.388"N	104°15'24.120"W	0.00	
917.00†	0.000	51.165	917.00	0.00	0.00	0.00	40°24'26.388"N	104°15'24.120"W	0.00	
1017.00†	0.000	51.165	1017.00	0.00	0.00	0.00	40°24'26.388"N	104°15'24.120"W	0.00	
1117.00†	0.000	51.165	1117.00	0.00	0.00	0.00	40°24'26.388"N	104°15'24.120"W	0.00	
1217.00†	0.000	51.165	1217.00	0.00	0.00	0.00	40°24'26.388"N	104°15'24.120"W	0.00	
1317.00†	0.000	51.165	1317.00	0.00	0.00	0.00	40°24'26.388"N	104°15'24.120"W	0.00	
1417.00†	0.000	51.165	1417.00	0.00	0.00	0.00	40°24'26.388"N	104°15'24.120"W	0.00	
1517.00†	0.000	51.165	1517.00	0.00	0.00	0.00	40°24'26.388"N	104°15'24.120"W	0.00	
1617.00†	0.000	51.165	1617.00	0.00	0.00	0.00	40°24'26.388"N	104°15'24.120"W	0.00	
1717.00†	0.000	51.165	1717.00	0.00	0.00	0.00	40°24'26.388"N	104°15'24.120"W	0.00	
1817.00†	0.000	51.165	1817.00	0.00	0.00	0.00	40°24'26.388"N	104°15'24.120"W	0.00	
1917.00†	0.000	51.165	1917.00	0.00	0.00	0.00	40°24'26.388"N	104°15'24.120"W	0.00	
2017.00†	0.000	51.165	2017.00	0.00	0.00	0.00	40°24'26.388"N	104°15'24.120"W	0.00	
2096.41	0.000	51.165	2096.41	0.00	0.00	0.00	40°24'26.388"N	104°15'24.120"W	0.00	End of Tangent
2117.00†	0.412	51.165	2117.00	0.05	0.05	0.06	40°24'26.388"N	104°15'24.119"W	2.00	
2217.00†	2.412	51.165	2216.96	1.67	1.59	1.98	40°24'26.404"N	104°15'24.094"W	2.00	
2317.00†	4.412	51.165	2316.78	5.60	5.32	6.61	40°24'26.441"N	104°15'24.035"W	2.00	
2417.00†	6.412	51.165	2416.33	11.83	11.24	13.96	40°24'26.499"N	104°15'23.940"W	2.00	
2517.00†	8.412	51.165	2515.49	20.34	19.33	24.01	40°24'26.579"N	104°15'23.810"W	2.00	
2546.41	9.000	51.165	2544.56	23.28	22.12	27.47	40°24'26.607"N	104°15'23.765"W	2.00	End of Build (XS)
2617.00†	9.000	51.165	2614.28	30.56	29.04	36.08	40°24'26.675"N	104°15'23.654"W	0.00	



Planned Wellpath Report

PRONGHORN 24-7-6XRLNB PWP (REV-A.0)

Page 3 of 9



REFERENCE WELLPATH IDENTIFICATION			
Operator	BONANZA CREEK OIL COMPANY	Slot	SLOT#04 PRONGHORN 24-7-6XRLNB (428'FN & 1445'FWL, SEC.18)
Area	COLORADO	Well	PRONGHORN 24-7-6XRLNB
Field	WELD COUNTY	Wellbore	PRONGHORN 24-7-6XRLNB PWB
Facility	SEC.18-T05N-R61W		

WELLPATH DATA (167 stations) † = interpolated/extrapolated station										
MD [ft]	Inclination [°]	Azimuth [°]	TVD [ft]	Vert Sect [ft]	North [ft]	East [ft]	Latitude	Longitude	DLS [°/100ft]	Comments
2717.00†	9.000	51.165	2713.05	40.89	38.85	48.26	40°24'26.772"N	104°15'23.496"W	0.00	
2817.00†	9.000	51.165	2811.82	51.21	48.66	60.45	40°24'26.869"N	104°15'23.339"W	0.00	
2917.00†	9.000	51.165	2910.59	61.54	58.47	72.63	40°24'26.966"N	104°15'23.181"W	0.00	
3017.00†	9.000	51.165	3009.36	71.86	68.28	84.82	40°24'27.063"N	104°15'23.024"W	0.00	
3117.00†	9.000	51.165	3108.13	82.18	78.09	97.00	40°24'27.160"N	104°15'22.866"W	0.00	
3217.00†	9.000	51.165	3206.90	92.51	87.90	109.19	40°24'27.257"N	104°15'22.709"W	0.00	
3317.00†	9.000	51.165	3305.66	102.83	97.71	121.38	40°24'27.354"N	104°15'22.551"W	0.00	
3417.00†	9.000	51.165	3404.43	113.16	107.52	133.56	40°24'27.450"N	104°15'22.393"W	0.00	
3517.00†	9.000	51.165	3503.20	123.48	117.33	145.75	40°24'27.547"N	104°15'22.236"W	0.00	
3617.00†	9.000	51.165	3601.97	133.80	127.14	157.93	40°24'27.644"N	104°15'22.078"W	0.00	
3717.00†	9.000	51.165	3700.74	144.13	136.95	170.12	40°24'27.741"N	104°15'21.921"W	0.00	
3817.00†	9.000	51.165	3799.51	154.45	146.76	182.30	40°24'27.838"N	104°15'21.763"W	0.00	
3917.00†	9.000	51.165	3898.28	164.78	156.57	194.49	40°24'27.935"N	104°15'21.606"W	0.00	
4017.00†	9.000	51.165	3997.05	175.10	166.38	206.67	40°24'28.032"N	104°15'21.448"W	0.00	
4117.00†	9.000	51.165	4095.82	185.42	176.19	218.86	40°24'28.129"N	104°15'21.291"W	0.00	
4217.00†	9.000	51.165	4194.58	195.75	186.00	231.04	40°24'28.226"N	104°15'21.133"W	0.00	
4317.00†	9.000	51.165	4293.35	206.07	195.81	243.23	40°24'28.323"N	104°15'20.976"W	0.00	
4417.00†	9.000	51.165	4392.12	216.39	205.62	255.42	40°24'28.420"N	104°15'20.818"W	0.00	
4517.00†	9.000	51.165	4490.89	226.72	215.43	267.60	40°24'28.517"N	104°15'20.661"W	0.00	
4617.00†	9.000	51.165	4589.66	237.04	225.24	279.79	40°24'28.614"N	104°15'20.503"W	0.00	
4717.00†	9.000	51.165	4688.43	247.37	235.05	291.97	40°24'28.711"N	104°15'20.346"W	0.00	
4817.00†	9.000	51.165	4787.20	257.69	244.86	304.16	40°24'28.808"N	104°15'20.188"W	0.00	
4917.00†	9.000	51.165	4885.97	268.01	254.66	316.34	40°24'28.904"N	104°15'20.031"W	0.00	
5017.00†	9.000	51.165	4984.73	278.34	264.47	328.53	40°24'29.001"N	104°15'19.873"W	0.00	
5117.00†	9.000	51.165	5083.50	288.66	274.28	340.71	40°24'29.098"N	104°15'19.716"W	0.00	
5217.00†	9.000	51.165	5182.27	298.99	284.09	352.90	40°24'29.195"N	104°15'19.558"W	0.00	
5317.00†	9.000	51.165	5281.04	309.31	293.90	365.09	40°24'29.292"N	104°15'19.401"W	0.00	
5417.00†	9.000	51.165	5379.81	319.63	303.71	377.27	40°24'29.389"N	104°15'19.243"W	0.00	
5517.00†	9.000	51.165	5478.58	329.96	313.52	389.46	40°24'29.486"N	104°15'19.086"W	0.00	
5588.37	9.000	51.165	5549.07	337.33	320.52	398.15	40°24'29.555"N	104°15'18.973"W	0.00	End of Tangent (XS)



Planned Wellpath Report

PRONGHORN 24-7-6XRLNB PWP (REV-A.0)

Page 4 of 9



REFERENCE WELLPATH IDENTIFICATION			
Operator	BONANZA CREEK OIL COMPANY	Slot	SLOT#04 PRONGHORN 24-7-6XRLNB (428'FN & 1445'FWL, SEC.18)
Area	COLORADO	Well	PRONGHORN 24-7-6XRLNB
Field	WELD COUNTY	Wellbore	PRONGHORN 24-7-6XRLNB PWB
Facility	SEC.18-T05N-R61W		

WELLPATH DATA (167 stations) † = interpolated/extrapolated station

MD [ft]	Inclination [°]	Azimuth [°]	TVD [ft]	Vert Sect [ft]	North [ft]	East [ft]	Latitude	Longitude	DLS [°/100ft]	Comments
5617.00†	11.008	39.341	5577.27	340.99	324.04	401.63	40°24'29.590"N	104°15'18.928"W	10.00	
5717.00†	19.736	20.072	5673.65	364.78	347.35	413.51	40°24'29.820"N	104°15'18.775"W	10.00	
5817.00†	29.271	12.667	5764.56	405.04	387.16	424.69	40°24'30.214"N	104°15'18.630"W	10.00	
5917.00†	39.025	8.704	5847.23	460.54	442.27	434.84	40°24'30.758"N	104°15'18.499"W	10.00	
6017.00†	48.866	6.132	5919.15	529.59	511.01	443.65	40°24'31.438"N	104°15'18.385"W	10.00	
6117.00†	58.750	4.238	5978.13	610.10	591.29	450.85	40°24'32.231"N	104°15'18.292"W	10.00	
6217.00†	68.655	2.706	6022.38	699.62	680.66	456.22	40°24'33.114"N	104°15'18.222"W	10.00	
6317.00†	78.573	1.371	6050.56	795.44	776.42	459.60	40°24'34.060"N	104°15'18.179"W	10.00	
6417.00†	88.497	0.126	6061.80	894.63	875.65	460.89	40°24'35.041"N	104°15'18.162"W	10.00	
6432.15	90.000	359.941	6062.00†	909.76	890.79	460.90	40°24'35.190"N	104°15'18.162"W	10.00	End of 3D Arc (XS)
6517.00†	90.000	359.941	6062.00	994.53	975.64	460.81	40°24'36.029"N	104°15'18.163"W	0.00	
6617.00†	90.000	359.941	6062.00	1094.43	1075.64	460.71	40°24'37.017"N	104°15'18.164"W	0.00	
6717.00†	90.000	359.941	6062.00	1194.34	1175.64	460.60	40°24'38.005"N	104°15'18.166"W	0.00	
6817.00†	90.000	359.941	6062.00	1294.24	1275.64	460.50	40°24'38.993"N	104°15'18.167"W	0.00	
6917.00†	90.000	359.941	6062.00	1394.14	1375.64	460.40	40°24'39.982"N	104°15'18.168"W	0.00	
7017.00†	90.000	359.941	6062.00	1494.05	1475.64	460.29	40°24'40.970"N	104°15'18.170"W	0.00	
7117.00†	90.000	359.941	6062.00	1593.95	1575.64	460.19	40°24'41.958"N	104°15'18.171"W	0.00	
7217.00†	90.000	359.941	6062.00	1693.85	1675.64	460.09	40°24'42.946"N	104°15'18.172"W	0.00	
7317.00†	90.000	359.941	6062.00	1793.76	1775.64	459.98	40°24'43.934"N	104°15'18.173"W	0.00	
7417.00†	90.000	359.941	6062.00	1893.66	1875.64	459.88	40°24'44.922"N	104°15'18.175"W	0.00	
7517.00†	90.000	359.941	6062.00	1993.56	1975.64	459.78	40°24'45.911"N	104°15'18.176"W	0.00	
7617.00†	90.000	359.941	6062.00	2093.47	2075.64	459.67	40°24'46.899"N	104°15'18.177"W	0.00	
7717.00†	90.000	359.941	6062.00	2193.37	2175.64	459.57	40°24'47.887"N	104°15'18.179"W	0.00	
7817.00†	90.000	359.941	6062.00	2293.27	2275.64	459.47	40°24'48.875"N	104°15'18.180"W	0.00	
7917.00†	90.000	359.941	6062.00	2393.18	2375.64	459.36	40°24'49.863"N	104°15'18.181"W	0.00	
8017.00†	90.000	359.941	6062.00	2493.08	2475.64	459.26	40°24'50.851"N	104°15'18.183"W	0.00	
8117.00†	90.000	359.941	6062.00	2592.98	2575.64	459.16	40°24'51.839"N	104°15'18.184"W	0.00	
8217.00†	90.000	359.941	6062.00	2692.89	2675.64	459.05	40°24'52.828"N	104°15'18.185"W	0.00	
8317.00†	90.000	359.941	6062.00	2792.79	2775.64	458.95	40°24'53.816"N	104°15'18.187"W	0.00	
8417.00†	90.000	359.941	6062.00	2892.69	2875.64	458.85	40°24'54.804"N	104°15'18.188"W	0.00	



Planned Wellpath Report

PRONGHORN 24-7-6XRLNB PWP (REV-A.0)

Page 5 of 9



REFERENCE WELLPATH IDENTIFICATION			
Operator	BONANZA CREEK OIL COMPANY	Slot	SLOT#04 PRONGHORN 24-7-6XRLNB (428'FN & 1445'FWL, SEC.18)
Area	COLORADO	Well	PRONGHORN 24-7-6XRLNB
Field	WELD COUNTY	Wellbore	PRONGHORN 24-7-6XRLNB PWB
Facility	SEC.18-T05N-R61W		

WELLPATH DATA (167 stations) † = interpolated/extrapolated station										
MD [ft]	Inclination [°]	Azimuth [°]	TVD [ft]	Vert Sect [ft]	North [ft]	East [ft]	Latitude	Longitude	DLS [°/100ft]	Comments
8517.00†	90.000	359.941	6062.00	2992.60	2975.64	458.74	40°24'55.792"N	104°15'18.189"W	0.00	
8617.00†	90.000	359.941	6062.00	3092.50	3075.64	458.64	40°24'56.780"N	104°15'18.191"W	0.00	
8717.00†	90.000	359.941	6062.00	3192.40	3175.64	458.54	40°24'57.768"N	104°15'18.192"W	0.00	
8817.00†	90.000	359.941	6062.00	3292.31	3275.64	458.43	40°24'58.757"N	104°15'18.193"W	0.00	
8917.00†	90.000	359.941	6062.00	3392.21	3375.64	458.33	40°24'59.745"N	104°15'18.194"W	0.00	
9017.00†	90.000	359.941	6062.00	3492.11	3475.64	458.22	40°25'00.733"N	104°15'18.196"W	0.00	
9117.00†	90.000	359.941	6062.00	3592.02	3575.64	458.12	40°25'01.721"N	104°15'18.197"W	0.00	
9217.00†	90.000	359.941	6062.00	3691.92	3675.64	458.02	40°25'02.709"N	104°15'18.198"W	0.00	
9317.00†	90.000	359.941	6062.00	3791.82	3775.64	457.91	40°25'03.697"N	104°15'18.200"W	0.00	
9417.00†	90.000	359.941	6062.00	3891.73	3875.64	457.81	40°25'04.686"N	104°15'18.201"W	0.00	
9517.00†	90.000	359.941	6062.00	3991.63	3975.64	457.71	40°25'05.674"N	104°15'18.202"W	0.00	
9617.00†	90.000	359.941	6062.00	4091.53	4075.64	457.60	40°25'06.662"N	104°15'18.204"W	0.00	
9717.00†	90.000	359.941	6062.00	4191.44	4175.64	457.50	40°25'07.650"N	104°15'18.205"W	0.00	
9817.00†	90.000	359.941	6062.00	4291.34	4275.64	457.40	40°25'08.638"N	104°15'18.206"W	0.00	
9917.00†	90.000	359.941	6062.00	4391.24	4375.64	457.29	40°25'09.626"N	104°15'18.208"W	0.00	
10017.00†	90.000	359.941	6062.00	4491.15	4475.64	457.19	40°25'10.615"N	104°15'18.209"W	0.00	
10117.00†	90.000	359.941	6062.00	4591.05	4575.64	457.09	40°25'11.603"N	104°15'18.210"W	0.00	
10217.00†	90.000	359.941	6062.00	4690.95	4675.64	456.98	40°25'12.591"N	104°15'18.212"W	0.00	
10317.00†	90.000	359.941	6062.00	4790.86	4775.64	456.88	40°25'13.579"N	104°15'18.213"W	0.00	
10417.00†	90.000	359.941	6062.00	4890.76	4875.64	456.78	40°25'14.567"N	104°15'18.214"W	0.00	
10517.00†	90.000	359.941	6062.00	4990.66	4975.64	456.67	40°25'15.555"N	104°15'18.216"W	0.00	
10617.00†	90.000	359.941	6062.00	5090.57	5075.64	456.57	40°25'16.543"N	104°15'18.217"W	0.00	
10717.00†	90.000	359.941	6062.00	5190.47	5175.64	456.47	40°25'17.532"N	104°15'18.218"W	0.00	
10817.00†	90.000	359.941	6062.00	5290.37	5275.64	456.36	40°25'18.520"N	104°15'18.219"W	0.00	
10917.00†	90.000	359.941	6062.00	5390.28	5375.64	456.26	40°25'19.508"N	104°15'18.221"W	0.00	
11017.00†	90.000	359.941	6062.00	5490.18	5475.64	456.16	40°25'20.496"N	104°15'18.222"W	0.00	
11117.00†	90.000	359.941	6062.00	5590.08	5575.64	456.05	40°25'21.484"N	104°15'18.223"W	0.00	
11217.00†	90.000	359.941	6062.00	5689.98	5675.64	455.95	40°25'22.472"N	104°15'18.225"W	0.00	
11317.00†	90.000	359.941	6062.00	5789.89	5775.64	455.84	40°25'23.461"N	104°15'18.226"W	0.00	
11417.00†	90.000	359.941	6062.00	5889.79	5875.64	455.74	40°25'24.449"N	104°15'18.227"W	0.00	



Planned Wellpath Report

PRONGHORN 24-7-6XRLNB PWP (REV-A.0)

Page 6 of 9



REFERENCE WELLPATH IDENTIFICATION			
Operator	BONANZA CREEK OIL COMPANY	Slot	SLOT#04 PRONGHORN 24-7-6XRLNB (428'FN & 1445'FWL, SEC.18)
Area	COLORADO	Well	PRONGHORN 24-7-6XRLNB
Field	WELD COUNTY	Wellbore	PRONGHORN 24-7-6XRLNB PWB
Facility	SEC.18-T05N-R61W		

WELLPATH DATA (167 stations) † = interpolated/extrapolated station										
MD [ft]	Inclination [°]	Azimuth [°]	TVD [ft]	Vert Sect [ft]	North [ft]	East [ft]	Latitude	Longitude	DLS [°/100ft]	Comments
11517.00†	90.000	359.941	6062.00	5989.69	5975.64	455.64	40°25'25.437"N	104°15'18.229"W	0.00	
11617.00†	90.000	359.941	6062.00	6089.60	6075.64	455.53	40°25'26.425"N	104°15'18.230"W	0.00	
11717.00†	90.000	359.941	6062.00	6189.50	6175.64	455.43	40°25'27.413"N	104°15'18.231"W	0.00	
11817.00†	90.000	359.941	6062.00	6289.40	6275.64	455.33	40°25'28.401"N	104°15'18.233"W	0.00	
11917.00†	90.000	359.941	6062.00	6389.31	6375.64	455.22	40°25'29.390"N	104°15'18.234"W	0.00	
12017.00†	90.000	359.941	6062.00	6489.21	6475.64	455.12	40°25'30.378"N	104°15'18.235"W	0.00	
12117.00†	90.000	359.941	6062.00	6589.11	6575.64	455.02	40°25'31.366"N	104°15'18.237"W	0.00	
12217.00†	90.000	359.941	6062.00	6689.02	6675.64	454.91	40°25'32.354"N	104°15'18.238"W	0.00	
12317.00†	90.000	359.941	6062.00	6788.92	6775.64	454.81	40°25'33.342"N	104°15'18.239"W	0.00	
12417.00†	90.000	359.941	6062.00	6888.82	6875.64	454.71	40°25'34.330"N	104°15'18.240"W	0.00	
12517.00†	90.000	359.941	6062.00	6988.73	6975.64	454.60	40°25'35.318"N	104°15'18.242"W	0.00	
12617.00†	90.000	359.941	6062.00	7088.63	7075.64	454.50	40°25'36.307"N	104°15'18.243"W	0.00	
12717.00†	90.000	359.941	6062.00	7188.53	7175.64	454.40	40°25'37.295"N	104°15'18.244"W	0.00	
12817.00†	90.000	359.941	6062.00	7288.44	7275.64	454.29	40°25'38.283"N	104°15'18.246"W	0.00	
12917.00†	90.000	359.941	6062.00	7388.34	7375.64	454.19	40°25'39.271"N	104°15'18.247"W	0.00	
13017.00†	90.000	359.941	6062.00	7488.24	7475.64	454.09	40°25'40.259"N	104°15'18.248"W	0.00	
13117.00†	90.000	359.941	6062.00	7588.15	7575.64	453.98	40°25'41.247"N	104°15'18.250"W	0.00	
13217.00†	90.000	359.941	6062.00	7688.05	7675.64	453.88	40°25'42.236"N	104°15'18.251"W	0.00	
13317.00†	90.000	359.941	6062.00	7787.95	7775.64	453.78	40°25'43.224"N	104°15'18.252"W	0.00	
13417.00†	90.000	359.941	6062.00	7887.86	7875.64	453.67	40°25'44.212"N	104°15'18.254"W	0.00	
13517.00†	90.000	359.941	6062.00	7987.76	7975.64	453.57	40°25'45.200"N	104°15'18.255"W	0.00	
13617.00†	90.000	359.941	6062.00	8087.66	8075.64	453.47	40°25'46.188"N	104°15'18.256"W	0.00	
13717.00†	90.000	359.941	6062.00	8187.57	8175.64	453.36	40°25'47.176"N	104°15'18.258"W	0.00	
13817.00†	90.000	359.941	6062.00	8287.47	8275.64	453.26	40°25'48.165"N	104°15'18.259"W	0.00	
13917.00†	90.000	359.941	6062.00	8387.37	8375.64	453.15	40°25'49.153"N	104°15'18.260"W	0.00	
14017.00†	90.000	359.941	6062.00	8487.28	8475.64	453.05	40°25'50.141"N	104°15'18.261"W	0.00	
14117.00†	90.000	359.941	6062.00	8587.18	8575.64	452.95	40°25'51.129"N	104°15'18.263"W	0.00	
14217.00†	90.000	359.941	6062.00	8687.08	8675.64	452.84	40°25'52.117"N	104°15'18.264"W	0.00	
14317.00†	90.000	359.941	6062.00	8786.99	8775.64	452.74	40°25'53.105"N	104°15'18.265"W	0.00	
14417.00†	90.000	359.941	6062.00	8886.89	8875.64	452.64	40°25'54.093"N	104°15'18.267"W	0.00	



Planned Wellpath Report

PRONGHORN 24-7-6XRLNB PWP (REV-A.0)

Page 7 of 9



REFERENCE WELLPATH IDENTIFICATION			
Operator	BONANZA CREEK OIL COMPANY	Slot	SLOT#04 PRONGHORN 24-7-6XRLNB (428'FN & 1445'FWL, SEC.18)
Area	COLORADO	Well	PRONGHORN 24-7-6XRLNB
Field	WELD COUNTY	Wellbore	PRONGHORN 24-7-6XRLNB PWB
Facility	SEC.18-T05N-R61W		

WELLPATH DATA (167 stations) † = interpolated/extrapolated station										
MD [ft]	Inclination [°]	Azimuth [°]	TVD [ft]	Vert Sect [ft]	North [ft]	East [ft]	Latitude	Longitude	DLS [°/100ft]	Comments
14517.00†	90.000	359.941	6062.00	8986.79	8975.64	452.53	40°25'55.082"N	104°15'18.268"W	0.00	
14617.00†	90.000	359.941	6062.00	9086.70	9075.64	452.43	40°25'56.070"N	104°15'18.269"W	0.00	
14717.00†	90.000	359.941	6062.00	9186.60	9175.64	452.33	40°25'57.058"N	104°15'18.271"W	0.00	
14817.00†	90.000	359.941	6062.00	9286.50	9275.64	452.22	40°25'58.046"N	104°15'18.272"W	0.00	
14917.00†	90.000	359.941	6062.00	9386.41	9375.64	452.12	40°25'59.034"N	104°15'18.273"W	0.00	
15017.00†	90.000	359.941	6062.00	9486.31	9475.64	452.02	40°26'00.022"N	104°15'18.275"W	0.00	
15117.00†	90.000	359.941	6062.00	9586.21	9575.64	451.91	40°26'01.011"N	104°15'18.276"W	0.00	
15217.00†	90.000	359.941	6062.00	9686.12	9675.64	451.81	40°26'01.999"N	104°15'18.277"W	0.00	
15317.00†	90.000	359.941	6062.00	9786.02	9775.64	451.71	40°26'02.987"N	104°15'18.279"W	0.00	
15417.00†	90.000	359.941	6062.00	9885.92	9875.64	451.60	40°26'03.975"N	104°15'18.280"W	0.00	
15517.00†	90.000	359.941	6062.00	9985.83	9975.64	451.50	40°26'04.963"N	104°15'18.281"W	0.00	
15617.00†	90.000	359.941	6062.00	10085.73	10075.64	451.40	40°26'05.951"N	104°15'18.283"W	0.00	
15717.00†	90.000	359.941	6062.00	10185.63	10175.64	451.29	40°26'06.939"N	104°15'18.284"W	0.00	
15817.00†	90.000	359.941	6062.00	10285.54	10275.64	451.19	40°26'07.928"N	104°15'18.285"W	0.00	
15917.00†	90.000	359.941	6062.00	10385.44	10375.64	451.09	40°26'08.916"N	104°15'18.286"W	0.00	
16017.00†	90.000	359.941	6062.00	10485.34	10475.64	450.98	40°26'09.904"N	104°15'18.288"W	0.00	
16033.60	90.000	359.941	6062.00 ²	10501.93	10492.24	450.96	40°26'10.068"N	104°15'18.288"W	0.00	End of Tangent (XS)

HOLE & CASING SECTIONS - Ref Wellbore: PRONGHORN 24-7-6XRLNB PWB Ref Wellpath: PRONGHORN 24-7-6XRLNB PWP (REV-A.0)									
String/Diameter	Start MD [ft]	End MD [ft]	Interval [ft]	Start TVD [ft]	End TVD [ft]	Start N/S [ft]	Start E/W [ft]	End N/S [ft]	End E/W [ft]
9.625in Casing Surface	17.00	1550.00	1533.00	17.00	1550.00	0.00	0.00	0.00	0.00
8.5in Open Hole	1550.00	16033.60	14483.60	1550.00	6062.00	0.00	0.00	10492.24	450.97



Planned Wellpath Report

PRONGHORN 24-7-6XRLNB PWP (REV-A.0)

Page 8 of 9



REFERENCE WELLPATH IDENTIFICATION			
Operator	BONANZA CREEK OIL COMPANY	Slot	SLOT#04 PRONGHORN 24-7-6XRLNB (428'FN & 1445'FWL, SEC.18)
Area	COLORADO	Well	PRONGHORN 24-7-6XRLNB
Field	WELD COUNTY	Wellbore	PRONGHORN 24-7-6XRLNB PWB
Facility	SEC.18-T05N-R61W		

TARGETS									
Name	MD [ft]	TVD [ft]	North [ft]	East [ft]	Grid East [US ft]	Grid North [US ft]	Latitude	Longitude	Shape
SEC.06-T05N-R61W		0.00	0.00	-61.27	3346161.88	1393657.05	40°24'26.388"N	104°15'24.912"W	polygon
SEC.07-T05N-R61W		0.00	0.00	-61.27	3346161.88	1393657.05	40°24'26.388"N	104°15'24.912"W	polygon
SEC.18-T05N-R61W		0.00	0.00	-61.27	3346161.88	1393657.05	40°24'26.388"N	104°15'24.912"W	polygon
2) PRONGHORN 24-7-6XRLNB BHL (470'FNL & 1980'FWL, SEC.06)	16033.60	6062.00	10492.24	450.96	3346526.94	1404155.00	40°26'10.068"N	104°15'18.288"W	point
PRONGHORN 24-7-6XRLNB LP (531'FSL & 1980'FWL, SEC.07)		6062.00	961.79	531.90	3346741.48	1394627.02	40°24'35.892"N	104°15'17.244"W	point
PRONGHORN 24-7-6XRLNB LP REV-1 (460'FSL & 1980'FWL, SEC.07)		6062.00	890.79	531.90	3346742.48	1394556.03	40°24'35.190"N	104°15'17.244"W	point
1) PRONGHORN 24-7-6XRLNB LP REV-2 (460'FSL & 1909'FWL, SEC.07)	6432.15	6062.00	890.79	460.90	3346671.49	1394555.03	40°24'35.190"N	104°15'18.162"W	point
SEC.06/07-T05N-R61W (460'FNL/FSL SETBACK)		6200.00	0.00	-61.27	3346161.88	1393657.05	40°24'26.388"N	104°15'24.912"W	polygon
SEC.18-T05N-R61W (460'FNL/FSL SETBACK)		6200.00	0.00	-61.27	3346161.88	1393657.05	40°24'26.388"N	104°15'24.912"W	polygon

SURVEY PROGRAM - Ref Wellbore: PRONGHORN 24-7-6XRLNB PWB Ref Wellpath: PRONGHORN 24-7-6XRLNB PWP (REV-A.0)				
Start MD [ft]	End MD [ft]	Positional Uncertainty Model	Log Name/Comment	Wellbore
17.00	1550.00	Custom BHI NaviTrak (Standard Rotating+Axial Corr) (Rockies 0.03Gt model)		PRONGHORN 24-7-6XRLNB PWB
1550.00	16033.60	Custom BHI AutoTrak Curve (Axial Corr, Short spacing) (Rockies 0.03Gt model)		PRONGHORN 24-7-6XRLNB PWB



Planned Wellpath Report

PRONGHORN 24-7-6XRLNB PWP (REV-A.0)

Page 9 of 9



REFERENCE WELLPATH IDENTIFICATION			
Operator	BONANZA CREEK OIL COMPANY	Slot	SLOT#04 PRONGHORN 24-7-6XRLNB (428'FN & 1445'FWL, SEC.18)
Area	COLORADO	Well	PRONGHORN 24-7-6XRLNB
Field	WELD COUNTY	Wellbore	PRONGHORN 24-7-6XRLNB PWB
Facility	SEC.18-T05N-R61W		

DESIGN COMMENTS				
MD [ft]	Inclination [°]	Azimuth [°]	TVD [ft]	Comment
17.00	0.000	51.165	17.00	Tie On
2096.41	0.000	51.165	2096.41	End of Tangent
2546.41	9.000	51.165	2544.56	End of Build (XS)
5588.37	9.000	51.165	5549.07	End of Tangent (XS)
6432.15	90.000	359.941	6062.00	End of 3D Arc (XS)
16033.60	90.000	359.941	6062.00	End of Tangent (XS)