

T4S, R65W, 6th P.M.

ConocoPhillips Company

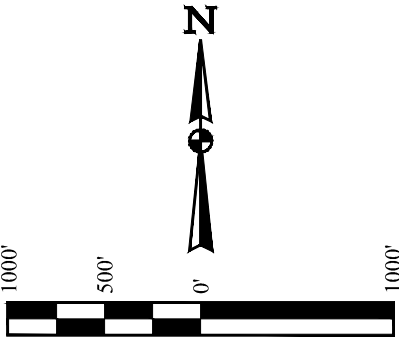
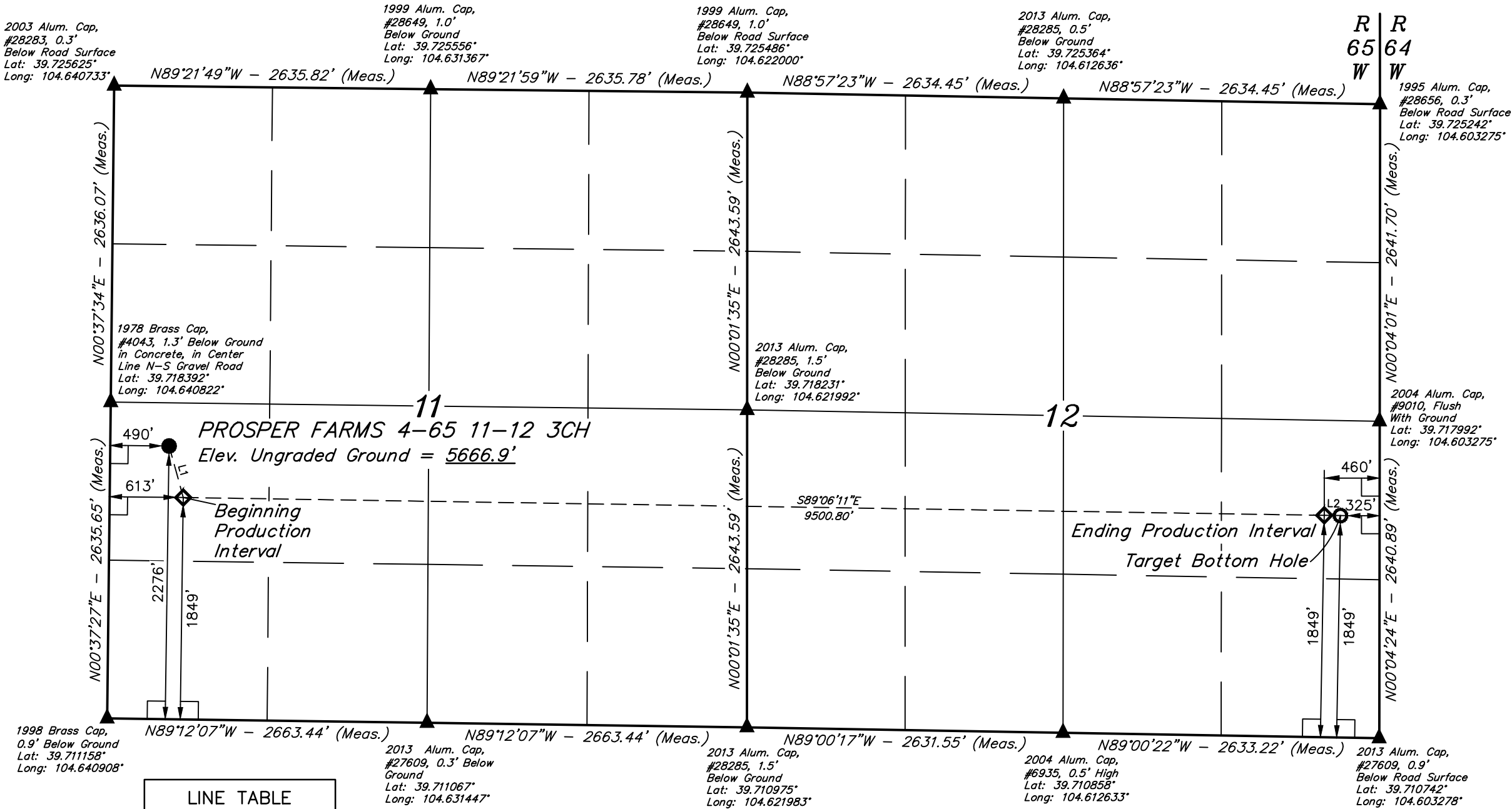
PROSPER FARMS 4-65 11-12 3CH
NW 1/4 SW 1/4, SECTION 11, T4S, R65W, 6th P.M.
ARAPAHOE COUNTY, COLORADO

BASIS OF BEARINGS

BASIS OF BEARINGS IS A G.P.S. OBSERVATION

BASIS OF ELEVATION

USGS COOPERATIVE BASE NETWORK CONTROL STATION,
DESIGNATION "K 374". NGS DATA SHEET LISTS THE NAVD 88
ELEVATION AS BEING 6054.61 FEET.



LINE TABLE		
LINE	DIRECTION	LENGTH
L1	S15°26'12"E	444.56'
L2	S89°00'22"E	135.02'

LEGEND:

- └─ = 90° SYMBOL
- = PROPOSED WELLHEAD.
- ◇ = PRODUCTION INTERVAL.
- = TARGET BOTTOM HOLE.
- ▲ = SECTION CORNERS LOCATED. (NAD 83)

NAD 83 (SURFACE LOCATION)	NAD 83 (BEG. PROD. INTERVAL)	NAD 83 (ENDING PROD. INTERVAL)	NAD 83 (TARGET BOTTOM HOLE)
LATITUDE = 39°43'02.59" (39.717386)	LATITUDE = 39°42'58.36" (39.716212)	LATITUDE = 39°42'57.02" (39.715839)	LATITUDE = 39°42'57.00" (39.715833)
LONGITUDE = 104°38'20.73" (104.639092)	LONGITUDE = 104°38'19.21" (104.638670)	LONGITUDE = 104°36'17.68" (104.604911)	LONGITUDE = 104°36'15.95" (104.604431)
NAD 27 (SURFACE LOCATION)	NAD 27 (BEG. PROD. INTERVAL)	NAD 27 (ENDING PROD. INTERVAL)	NAD 27 (TARGET BOTTOM HOLE)
LATITUDE = 39°43'02.64" (39.717400)	LATITUDE = 39°42'58.41" (39.716225)	LATITUDE = 39°42'57.07" (39.715853)	LATITUDE = 39°42'57.04" (39.715844)
LONGITUDE = 104°38'18.85" (104.638569)	LONGITUDE = 104°38'17.33" (104.638146)	LONGITUDE = 104°36'15.80" (104.604389)	LONGITUDE = 104°36'14.07" (104.603908)
STATE PLANE NAD 83 (CO. CEN.)	STATE PLANE NAD 83 (CO. CEN.)	STATE PLANE NAD 83 (CO. CEN.)	STATE PLANE NAD 83 (CO. CEN.)
N: 1687335.16 E: 3242180.62	N: 1686908.09 E: 3242303.62	N: 1686863.88 E: 3251801.58	N: 1686863.03 E: 3251936.55
STATE PLANE NAD 27 (CO. CEN.)	STATE PLANE NAD 27 (CO. CEN.)	STATE PLANE NAD 27 (CO. CEN.)	STATE PLANE NAD 27 (CO. CEN.)
N: 687327.54 E: 2242334.19	N: 686900.48 E: 2242457.20	N: 686856.41 E: 2251955.07	N: 686855.56 E: 2252090.04

PDOP = 1.5

CERTIFICATE

THIS IS TO CERTIFY THAT THE ABOVE PLAT WAS PREPARED FROM FIELD
NOTES OF ACTUAL SURVEYS MADE BY ME OR UNDER MY SUPERVISION
AND THAT THE SAME ARE TRUE AND CORRECT TO THE BEST OF MY
KNOWLEDGE AND BELIEF.

REGISTERED LAND SURVEYOR
REGISTRATION NO. 28285
STATE OF COLORADO
EXPIRATION DATE 02-15-18

REV: 2 02-15-18 T.S. (BPI CHANGES)



UELS, LLC
Corporate Office * 85 South 200 East
Vernal, UT 84078 * (435) 789-1017

SURVEYED BY	DALLAS NIELSEN, C.M.	09-21-17	SCALE
DRAWN BY	J.J.	07-07-17	1" = 1000'

WELL LOCATION PLAT