



May 24, 2018

Ms. Julie Murphy, Director
Colorado Oil & Gas Conservation Commission
1120 Lincoln Street, Ste. 801
Denver, Colorado 80203

RE: Rule 318.A.e. Proposed Spacing Unit 30 Day Notification Certification

Rinn Valley East N17-20-1C
Rinn Valley East N17-20-2N

Surface Location: SWSE, Section 17, Township 2 North, Range 68 West
Weld County, CO

Dear Ms. Murphy:

Extraction Oil and Gas, Inc. (Extraction) is planning to drill the captioned horizontal wells in accordance with the provision of COGCC Rule 318A.e.

The proposed wellbore spacing unit consists of:

E2E2 of Section 17, W2W2 of Section 16, E2E2 of Section 8 & W2W2 of Section 9 in T2N R68W.

The spacing unit is an 640-acre wellbore spacing unit for the Niobrara and Codell formations.

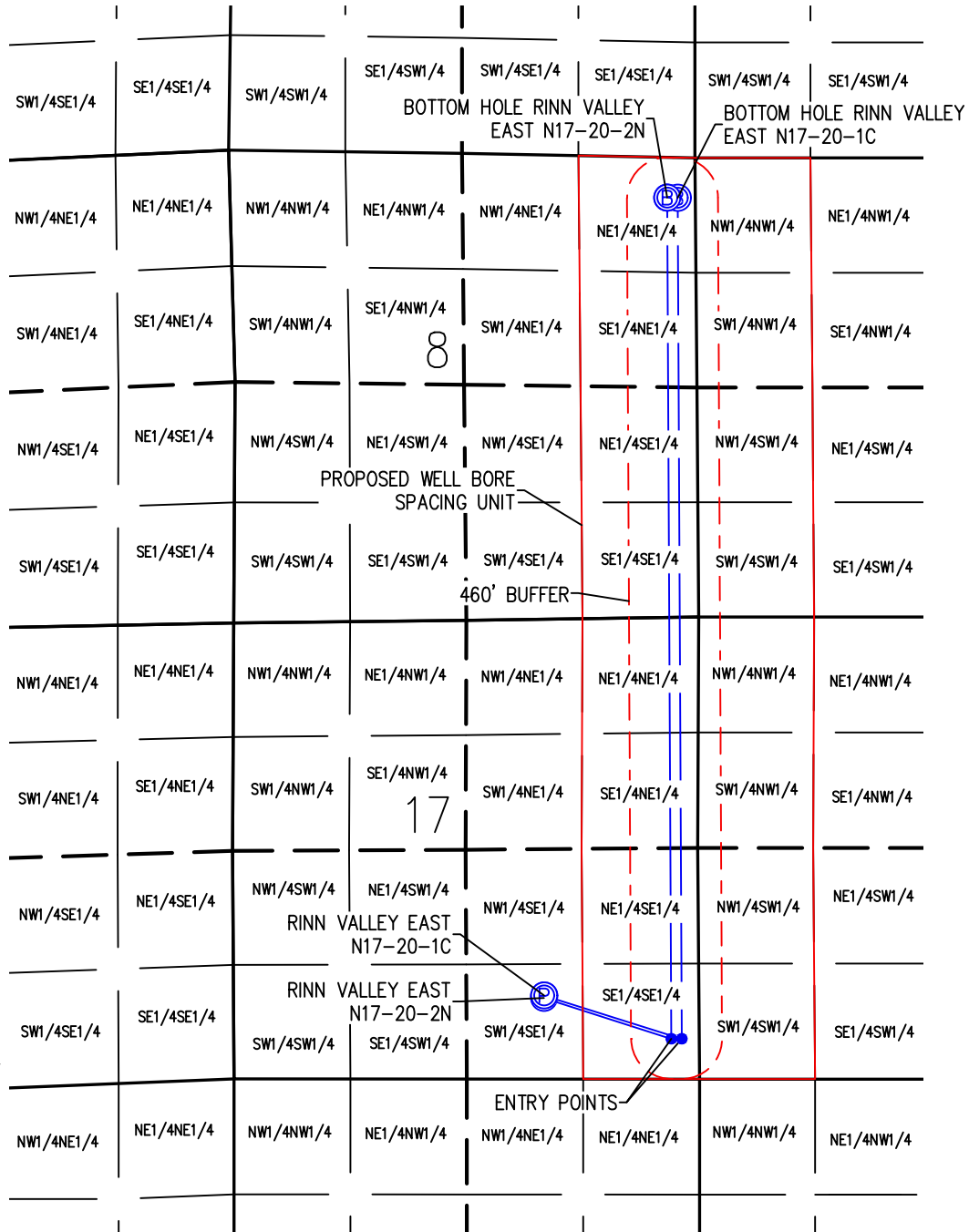
Extraction hereby certifies to the Director that all Owners within the proposed spacing unit above were notified and 30 days have passed without objection.

If you have any questions or issues regarding this permit, please contact Kelsi Welch at (720) 354-4607.

Sincerely,

Kelsi Welch
Regulatory Analyst
Extraction Oil & Gas, Inc.

WELL BORE DIAGRAM RINN VALLEY EAST PAD RINN VALLEY N17-20-1C & N17-20-2N



RINN VALLEY EAST N17-20-1C

SURFACE LOCATION
SEC. 17, T2N, R68W
GROUND ELEVATION = 4914.9'
PDOP = 1.2
LATITUDE = 40.134107°
LONGITUDE = -105.023979°
954' FSL, 1769' FEL
ENTRY POINT LOCATION
SEC. 17, T2N, R68W
LATITUDE = 40.132726°
LONGITUDE = -105.018360°
460' FSL, 200' FEL
BOTTOM HOLE LOCATION
SEC. 8, T2N, R68W
LATITUDE = 40.159120°
LONGITUDE = -105.018338°
460' FNL, 200' FEL

RINN VALLEY EAST N17-20-2N

SURFACE LOCATION
SEC. 17, T2N, R68W
GROUND ELEVATION = 4915.8'
PDOP = 1.2
LATITUDE = 40.134030°
LONGITUDE = -105.023981°
926' FSL, 1770' FEL
ENTRY POINT LOCATION
SEC. 17, T2N, R68W
LATITUDE = 40.132728°
LONGITUDE = -105.018789°
460' FSL, 320' FEL
BOTTOM HOLE LOCATION
SEC. 8, T2N, R68W
LATITUDE = 40.159129°
LONGITUDE = -105.018768°
460' FNL, 320' FEL

NOTES:

- THIS SKETCH DOES NOT REPRESENT A BOUNDARY SURVEY.
- THE DATUM FOR THE LATITUDES AND LONGITUDES ON THIS SKETCH IS NAD83.

LEGEND

- PROPOSED WELL HEAD
- PROPOSED BOTTOM HOLE
- ENTRY POINT



DRAWN BY	BGR	CHECKED BY	AAD
INITIAL SUBMITTAL	3/9/2018	REVISED	5/22/2018
DRAWING SIZE	8.5" X 11"	JOB NO.	EXT02N68W17-01
SHEET	1 OF 1		

BASELINE
Engineering - Planning - Surveying
4007 S. LINCOLN AVENUE, SUITE 405 • LOVELAND, COLORADO 80537
P: 970.363.7600 • F: 970.363.7601 • www.baselinecorp.com

