



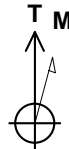
Well: 70 Ranch 10-08-4L  
Site: Section 03-T04N-R63W  
Project: Weld County, Colorado  
Wellbore: Original Hole  
Design: plan1

#### DESIGN TARGET DETAILS

Name	TVD	+N/-S	+E/-W	Northing	Easting	Latitude	Longitude
70 Ranch 10-08-4L SL 260 FSL 1037 FWL	-4592.00	-29.27	-3.7914649105.45	1799228.01	40.33464359	-104.43012974	
70 Ranch 10-08-4L BHL 470 FSL 470 FWL	6534.00	-10398.56	-509.5414638733.14	1798789.03	40.30616995	-104.43194364	
70 Ranch 10-08-4L LP 470 FNL 470 FWL	6534.00	-792.09	-581.1014648338.93	1798655.62	40.33254890	-104.43220121	

#### Section Details

Sec	MD	Inc	Azi	TVD	+N/-S	+E/-W	Dleg	Vsect	Annotation
1	0.00	0.00	0.00	0.00	0.00	0.00	0.00	0.00	
2	2000.00	0.00	0.00	2000.00	0.00	0.00	0.00	0.00	KOP Begin 10°/100' build
3	2080.56	8.06	246.93	2080.30	-2.22	-5.20	10.00	2.47	Begin 8.06° tangent
4	6035.83	8.06	246.93	5996.53	-219.46	-515.16	0.00	244.41	Begin 10°/100' build/turn
5	6904.89	90.00	179.57	6534.00	-792.09	-581.10	10.00	819.58	LP Begin 90° lateral
6	16511.63	90.00	179.57	6534.00	-10398.56	-509.54	0.00	10411.04	PBHL/TD 16511.62 MD/6534.00 TVD



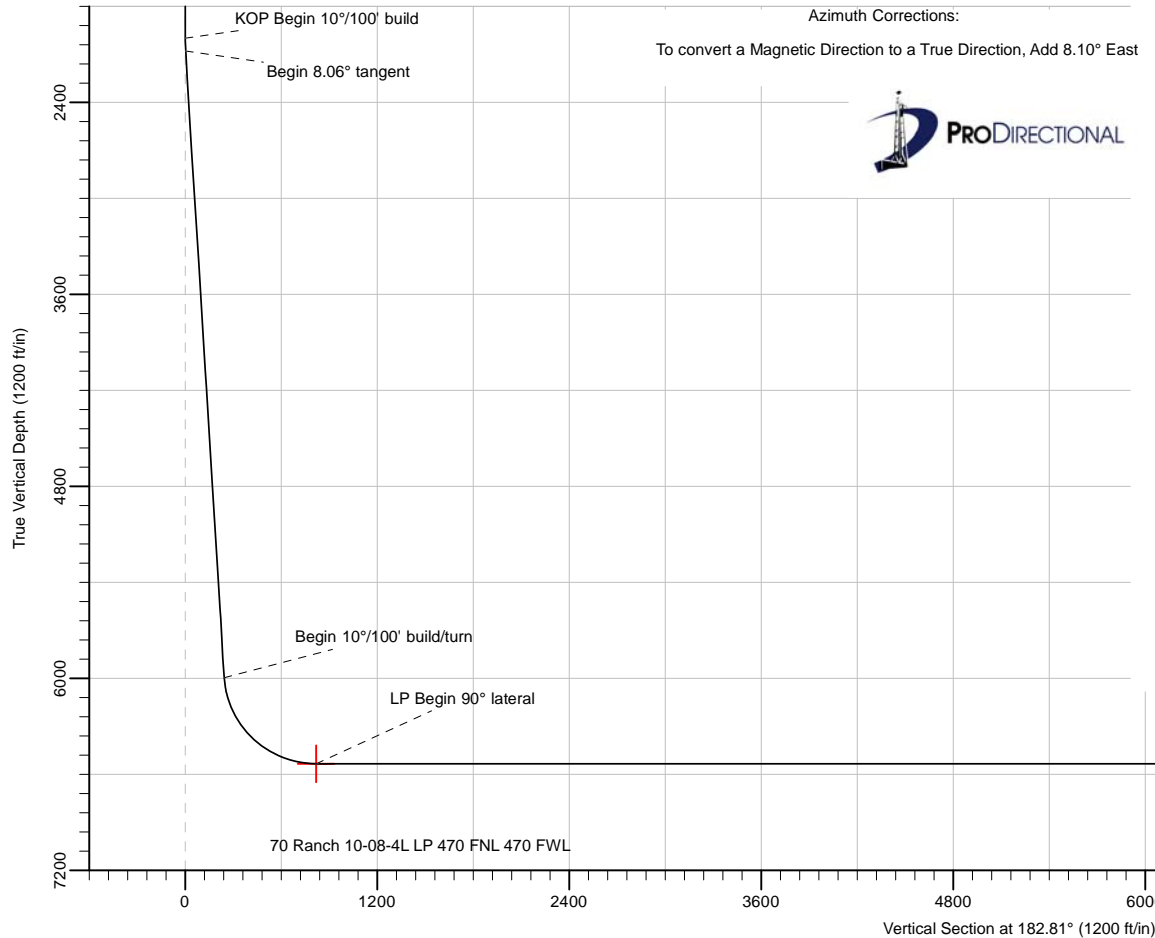
Azimuths to True North  
Magnetic North: 8.10°

Magnetic Field  
Strength: 52259.6snT  
Dip Angle: 66.92°  
Date: 5/21/2018  
Model: HDGM

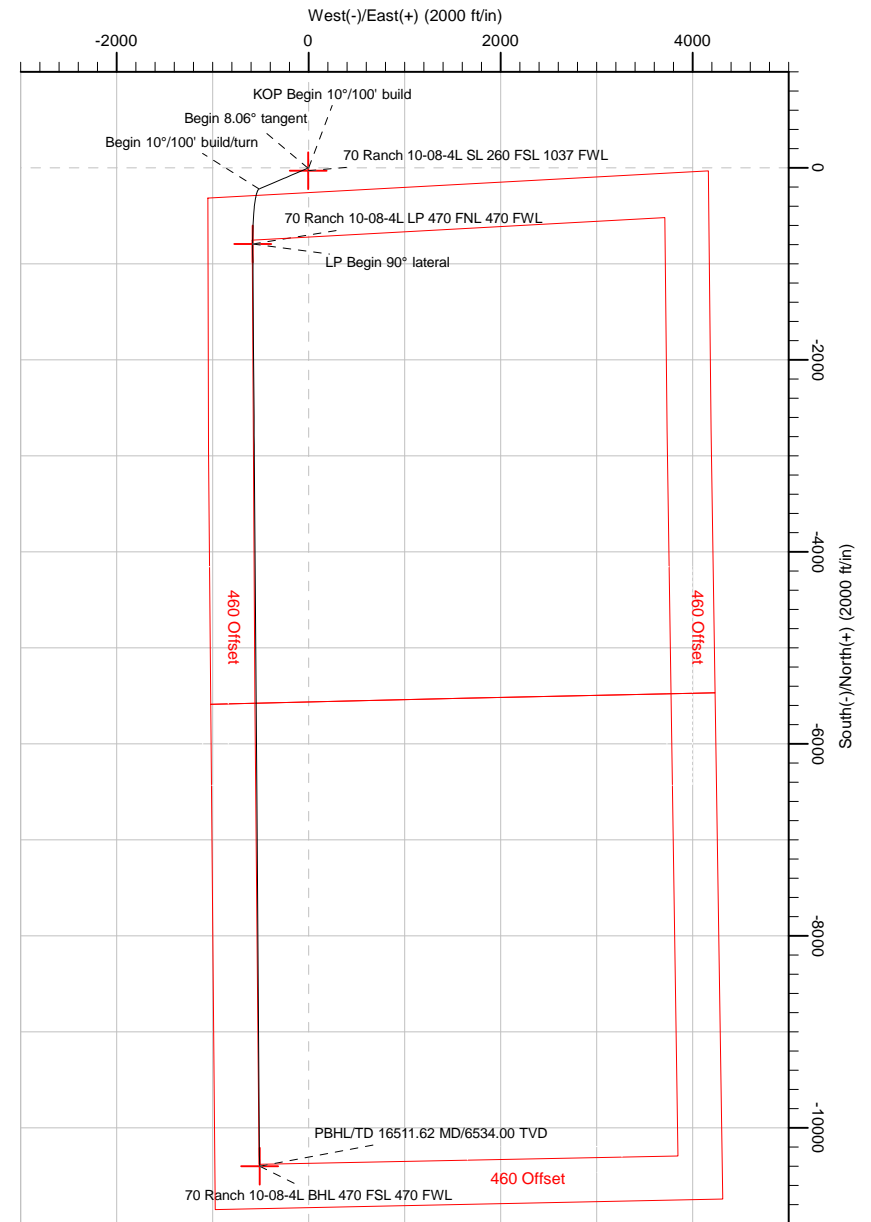
70 Ranch 10-08-4L Surf loc: 260 FSL 1037 FWL Section 03-T04N-R63W			
NAD83 Colorado - HARN Universal Transverse Mercator (US Survey Feet) Zone 13N (108 W to 102 W) RKB=4592+24 @ 4624.00ft			
Northing	Easting	Latitude	Longitude
14649134.75	1799231.61	40.33472397	-104.43011615

#### Azimuth Corrections:

To convert a Magnetic Direction to a True Direction, Add 8.10° East



Date: 3:55, May 21 2018



PBHL/TD 16511.62 MD/6534.00 TVD  
70 Ranch 10-08-4L BHL 470 FSL 470 FWL

Note: All lease lines and hard lines are estimates only and are subject to customers approval.

<b>Database:</b>	DB_Jul2216dt_v14	<b>Local Co-ordinate Reference:</b>	Well 70 Ranch 10-08-4L
<b>Company:</b>	Confluence Resources	<b>TVD Reference:</b>	Mean Sea Level
<b>Project:</b>	Weld County, Colorado	<b>MD Reference:</b>	RKB=4592+24 @ 4624.00ft
<b>Site:</b>	Section 03-T04N-R63W	<b>North Reference:</b>	True
<b>Well:</b>	70 Ranch 10-08-4L	<b>Survey Calculation Method:</b>	Minimum Curvature
<b>Wellbore:</b>	Original Hole		
<b>Design:</b>	plan1		

<b>Project</b>	Weld County, Colorado		
<b>Map System:</b>	Universal Transverse Mercator (US Survey Feet)	<b>System Datum:</b>	Mean Sea Level
<b>Geo Datum:</b>	NAD83 Colorado - HARN		
<b>Map Zone:</b>	Zone 13N (108 W to 102 W)		

Site		Section 03-T04N-R63W			
Site Position:		Northing:	14,650,244.32 usft	Latitude:	40.33774036
From:	Map	Easting:	1,800,940.24 usft	Longitude:	-104.42395937
Position Uncertainty:	0.00 ft	Slot Radius:	13-3/16 "	Grid Convergence:	0.37 °

Well	70 Ranch 10-08-4L, Surf loc: 260 FSL 1037 FWL Section 03-T04N-R63W					
Well Position	+N/-S	-1,098.43 ft	Northing:	14,649,134.75 usft	Latitude:	40.33472397
	+E/-W	-1,715.82 ft	Easting:	1,799,231.61 usft	Longitude:	-104.43011615
Position Uncertainty		0.00 ft	Wellhead Elevation:		Ground Level:	4,592.00 ft

<b>Wellbore</b>	Original Hole				
<b>Magnetics</b>	<b>Model Name</b>	<b>Sample Date</b>	<b>Declination (°)</b>	<b>Dip Angle (°)</b>	<b>Field Strength (nT)</b>
	HDGM	5/21/2018	8.10	66.92	52,259.60000000

<b>Design</b>	plan1			
<b>Audit Notes:</b>				
<b>Version:</b>	<b>Phase:</b>	PLAN	<b>Tie On Depth:</b>	0.00
<b>Vertical Section:</b>	<b>Depth From (TVD) (ft)</b>	<b>+N/-S (ft)</b>	<b>+E/-W (ft)</b>	<b>Direction (°)</b>
	-4,624.00	0.00	0.00	182.81

<b>Plan Survey Tool Program</b>	<b>Date</b>	5/21/2018		
<b>Depth From (ft)</b>	<b>Depth To (ft)</b>	<b>Survey (Wellbore)</b>	<b>Tool Name</b>	<b>Remarks</b>
1	0.00	16,511.63	plan1 (Original Hole)	

<b>Plan Sections</b>										
<b>Measured Depth (ft)</b>	<b>Inclination (°)</b>	<b>Azimuth (°)</b>	<b>TVD Below System (ft)</b>	<b>+N/-S (ft)</b>	<b>+E/-W (ft)</b>	<b>Dogleg Rate (°/100ft)</b>	<b>Build Rate (°/100ft)</b>	<b>Turn Rate (°/100ft)</b>	<b>TFO (°)</b>	<b>Target</b>
0.00	0.00	0.00	0.00	0.00	0.00	0.00	0.00	0.00	0.00	
2,000.00	0.00	0.00	2,000.00	0.00	0.00	0.00	0.00	0.00	0.00	
2,080.56	8.06	246.93	2,080.30	-2.22	-5.20	10.00	10.00	0.00	246.93	
6,035.83	8.06	246.93	5,996.53	-219.46	-515.16	0.00	0.00	0.00	0.00	
6,904.89	90.00	179.57	6,534.00	-792.09	-581.10	10.00	9.43	-7.75	-67.55	70 Ranch 10-08-4L LI
16,511.63	90.00	179.57	6,534.00	-10,398.56	-509.54	0.00	0.00	0.00	0.00	70 Ranch 10-08-4L BI

<b>Database:</b>	DB_Jul2216dt_v14	<b>Local Co-ordinate Reference:</b>	Well 70 Ranch 10-08-4L
<b>Company:</b>	Confluence Resources	<b>TVD Reference:</b>	Mean Sea Level
<b>Project:</b>	Weld County, Colorado	<b>MD Reference:</b>	RKB=4592+24 @ 4624.00ft
<b>Site:</b>	Section 03-T04N-R63W	<b>North Reference:</b>	True
<b>Well:</b>	70 Ranch 10-08-4L	<b>Survey Calculation Method:</b>	Minimum Curvature
<b>Wellbore:</b>	Original Hole		
<b>Design:</b>	plan1		

Planned Survey									
Measured Depth (ft)	Inclination (°)	Azimuth (°)	TVD Below System (ft)	+N/-S (ft)	+E/-W (ft)	Vertical Section (ft)	Dogleg Rate (°/100ft)	Build Rate (°/100ft)	Turn Rate (°/100ft)
0.00	0.00	0.00	0.00	0.00	0.00	0.00	0.00	0.00	0.00
100.00	0.00	0.00	100.00	0.00	0.00	0.00	0.00	0.00	0.00
200.00	0.00	0.00	200.00	0.00	0.00	0.00	0.00	0.00	0.00
300.00	0.00	0.00	300.00	0.00	0.00	0.00	0.00	0.00	0.00
400.00	0.00	0.00	400.00	0.00	0.00	0.00	0.00	0.00	0.00
500.00	0.00	0.00	500.00	0.00	0.00	0.00	0.00	0.00	0.00
600.00	0.00	0.00	600.00	0.00	0.00	0.00	0.00	0.00	0.00
700.00	0.00	0.00	700.00	0.00	0.00	0.00	0.00	0.00	0.00
800.00	0.00	0.00	800.00	0.00	0.00	0.00	0.00	0.00	0.00
900.00	0.00	0.00	900.00	0.00	0.00	0.00	0.00	0.00	0.00
1,000.00	0.00	0.00	1,000.00	0.00	0.00	0.00	0.00	0.00	0.00
1,100.00	0.00	0.00	1,100.00	0.00	0.00	0.00	0.00	0.00	0.00
1,200.00	0.00	0.00	1,200.00	0.00	0.00	0.00	0.00	0.00	0.00
1,300.00	0.00	0.00	1,300.00	0.00	0.00	0.00	0.00	0.00	0.00
1,400.00	0.00	0.00	1,400.00	0.00	0.00	0.00	0.00	0.00	0.00
1,500.00	0.00	0.00	1,500.00	0.00	0.00	0.00	0.00	0.00	0.00
1,600.00	0.00	0.00	1,600.00	0.00	0.00	0.00	0.00	0.00	0.00
1,700.00	0.00	0.00	1,700.00	0.00	0.00	0.00	0.00	0.00	0.00
1,800.00	0.00	0.00	1,800.00	0.00	0.00	0.00	0.00	0.00	0.00
1,900.00	0.00	0.00	1,900.00	0.00	0.00	0.00	0.00	0.00	0.00
2,000.00	0.00	0.00	2,000.00	0.00	0.00	0.00	0.00	0.00	0.00
<b>KOP Begin 10°/100' build</b>									
2,080.56	8.06	246.93	2,080.30	-2.22	-5.20	2.47	10.00	10.00	0.00
<b>Begin 8.06° tangent</b>									
2,100.00	8.06	246.93	2,099.54	-3.28	-7.71	3.66	0.00	0.00	0.00
2,200.00	8.06	246.93	2,198.56	-8.78	-20.60	9.77	0.00	0.00	0.00
2,300.00	8.06	246.93	2,297.57	-14.27	-33.49	15.89	0.00	0.00	0.00
2,400.00	8.06	246.93	2,396.58	-19.76	-46.39	22.01	0.00	0.00	0.00
2,500.00	8.06	246.93	2,495.60	-25.25	-59.28	28.13	0.00	0.00	0.00
2,600.00	8.06	246.93	2,594.61	-30.75	-72.17	34.24	0.00	0.00	0.00
2,700.00	8.06	246.93	2,693.62	-36.24	-85.07	40.36	0.00	0.00	0.00
2,800.00	8.06	246.93	2,792.63	-41.73	-97.96	46.48	0.00	0.00	0.00
2,900.00	8.06	246.93	2,891.65	-47.22	-110.85	52.59	0.00	0.00	0.00
3,000.00	8.06	246.93	2,990.66	-52.72	-123.75	58.71	0.00	0.00	0.00
3,100.00	8.06	246.93	3,089.67	-58.21	-136.64	64.83	0.00	0.00	0.00
3,200.00	8.06	246.93	3,188.69	-63.70	-149.53	70.94	0.00	0.00	0.00
3,300.00	8.06	246.93	3,287.70	-69.20	-162.42	77.06	0.00	0.00	0.00
3,400.00	8.06	246.93	3,386.71	-74.69	-175.32	83.18	0.00	0.00	0.00
3,500.00	8.06	246.93	3,485.73	-80.18	-188.21	89.30	0.00	0.00	0.00
3,600.00	8.06	246.93	3,584.74	-85.67	-201.10	95.41	0.00	0.00	0.00
3,700.00	8.06	246.93	3,683.75	-91.17	-214.00	101.53	0.00	0.00	0.00
3,800.00	8.06	246.93	3,782.77	-96.66	-226.89	107.65	0.00	0.00	0.00
3,900.00	8.06	246.93	3,881.78	-102.15	-239.78	113.76	0.00	0.00	0.00
4,000.00	8.06	246.93	3,980.79	-107.64	-252.68	119.88	0.00	0.00	0.00
4,100.00	8.06	246.93	4,079.81	-113.14	-265.57	126.00	0.00	0.00	0.00
4,200.00	8.06	246.93	4,178.82	-118.63	-278.46	132.11	0.00	0.00	0.00
4,300.00	8.06	246.93	4,277.83	-124.12	-291.36	138.23	0.00	0.00	0.00
4,400.00	8.06	246.93	4,376.85	-129.61	-304.25	144.35	0.00	0.00	0.00
4,500.00	8.06	246.93	4,475.86	-135.11	-317.14	150.47	0.00	0.00	0.00
4,600.00	8.06	246.93	4,574.87	-140.60	-330.03	156.58	0.00	0.00	0.00
4,700.00	8.06	246.93	4,673.88	-146.09	-342.93	162.70	0.00	0.00	0.00
4,800.00	8.06	246.93	4,772.90	-151.58	-355.82	168.82	0.00	0.00	0.00
4,900.00	8.06	246.93	4,871.91	-157.08	-368.71	174.93	0.00	0.00	0.00

<b>Database:</b>	DB_Jul2216dt_v14	<b>Local Co-ordinate Reference:</b>	Well 70 Ranch 10-08-4L
<b>Company:</b>	Confluence Resources	<b>TVD Reference:</b>	Mean Sea Level
<b>Project:</b>	Weld County, Colorado	<b>MD Reference:</b>	RKB=4592+24 @ 4624.00ft
<b>Site:</b>	Section 03-T04N-R63W	<b>North Reference:</b>	True
<b>Well:</b>	70 Ranch 10-08-4L	<b>Survey Calculation Method:</b>	Minimum Curvature
<b>Wellbore:</b>	Original Hole		
<b>Design:</b>	plan1		

Planned Survey									
Measured Depth (ft)	Inclination (°)	Azimuth (°)	TVD Below System (ft)	+N/-S (ft)	+E/-W (ft)	Vertical Section (ft)	Dogleg Rate (°/100ft)	Build Rate (°/100ft)	Turn Rate (°/100ft)
5,000.00	8.06	246.93	4,970.92	-162.57	-381.61	181.05	0.00	0.00	0.00
5,100.00	8.06	246.93	5,069.94	-168.06	-394.50	187.17	0.00	0.00	0.00
5,200.00	8.06	246.93	5,168.95	-173.55	-407.39	193.29	0.00	0.00	0.00
5,300.00	8.06	246.93	5,267.96	-179.05	-420.29	199.40	0.00	0.00	0.00
5,400.00	8.06	246.93	5,366.98	-184.54	-433.18	205.52	0.00	0.00	0.00
5,500.00	8.06	246.93	5,465.99	-190.03	-446.07	211.64	0.00	0.00	0.00
5,600.00	8.06	246.93	5,565.00	-195.53	-458.97	217.75	0.00	0.00	0.00
5,700.00	8.06	246.93	5,664.02	-201.02	-471.86	223.87	0.00	0.00	0.00
5,800.00	8.06	246.93	5,763.03	-206.51	-484.75	229.99	0.00	0.00	0.00
5,900.00	8.06	246.93	5,862.04	-212.00	-497.64	236.10	0.00	0.00	0.00
6,000.00	8.06	246.93	5,961.06	-217.50	-510.54	242.22	0.00	0.00	0.00
6,035.83	8.06	246.93	5,996.53	-219.46	-515.16	244.41	0.00	0.00	0.00
Begin 10°/100' build/turn									
6,100.00	12.06	217.28	6,059.74	-226.57	-523.36	251.91	10.00	6.23	-46.19
6,200.00	20.83	199.65	6,155.62	-251.68	-535.70	277.60	10.00	8.77	-17.63
6,300.00	30.35	192.46	6,245.72	-293.20	-547.16	319.63	10.00	9.52	-7.19
6,400.00	40.09	188.50	6,327.33	-349.87	-557.40	376.73	10.00	9.74	-3.96
6,500.00	49.92	185.88	6,397.95	-419.95	-566.10	447.15	10.00	9.83	-2.62
6,600.00	59.79	183.93	6,455.44	-501.32	-573.00	528.76	10.00	9.87	-1.95
6,700.00	69.69	182.34	6,498.06	-591.51	-577.90	619.09	10.00	9.90	-1.59
6,800.00	79.60	180.95	6,524.51	-687.78	-580.64	715.37	10.00	9.91	-1.40
6,900.00	89.51	179.64	6,533.98	-787.20	-581.13	814.70	10.00	9.91	-1.31
6,904.89	90.00	179.57	6,534.00	-792.09	-581.10	819.58	10.00	9.92	-1.30
LP Begin 90° lateral									
7,000.00	90.00	179.57	6,534.00	-887.20	-580.39	914.54	0.00	0.00	0.00
7,100.00	90.00	179.57	6,534.00	-987.20	-579.65	1,014.38	0.00	0.00	0.00
7,200.00	90.00	179.57	6,534.00	-1,087.19	-578.90	1,114.22	0.00	0.00	0.00
7,300.00	90.00	179.57	6,534.00	-1,187.19	-578.16	1,214.06	0.00	0.00	0.00
7,400.00	90.00	179.57	6,534.00	-1,287.19	-577.41	1,313.91	0.00	0.00	0.00
7,500.00	90.00	179.57	6,534.00	-1,387.19	-576.67	1,413.75	0.00	0.00	0.00
7,600.00	90.00	179.57	6,534.00	-1,487.18	-575.92	1,513.59	0.00	0.00	0.00
7,700.00	90.00	179.57	6,534.00	-1,587.18	-575.18	1,613.43	0.00	0.00	0.00
7,800.00	90.00	179.57	6,534.00	-1,687.18	-574.43	1,713.27	0.00	0.00	0.00
7,900.00	90.00	179.57	6,534.00	-1,787.17	-573.69	1,813.11	0.00	0.00	0.00
8,000.00	90.00	179.57	6,534.00	-1,887.17	-572.94	1,912.95	0.00	0.00	0.00
8,100.00	90.00	179.57	6,534.00	-1,987.17	-572.20	2,012.79	0.00	0.00	0.00
8,200.00	90.00	179.57	6,534.00	-2,087.17	-571.45	2,112.63	0.00	0.00	0.00
8,300.00	90.00	179.57	6,534.00	-2,187.16	-570.71	2,212.47	0.00	0.00	0.00
8,400.00	90.00	179.57	6,534.00	-2,287.16	-569.96	2,312.31	0.00	0.00	0.00
8,500.00	90.00	179.57	6,534.00	-2,387.16	-569.22	2,412.16	0.00	0.00	0.00
8,600.00	90.00	179.57	6,534.00	-2,487.15	-568.47	2,512.00	0.00	0.00	0.00
8,700.00	90.00	179.57	6,534.00	-2,587.15	-567.73	2,611.84	0.00	0.00	0.00
8,800.00	90.00	179.57	6,534.00	-2,687.15	-566.98	2,711.68	0.00	0.00	0.00
8,900.00	90.00	179.57	6,534.00	-2,787.15	-566.24	2,811.52	0.00	0.00	0.00
9,000.00	90.00	179.57	6,534.00	-2,887.14	-565.49	2,911.36	0.00	0.00	0.00
9,100.00	90.00	179.57	6,534.00	-2,987.14	-564.75	3,011.20	0.00	0.00	0.00
9,200.00	90.00	179.57	6,534.00	-3,087.14	-564.00	3,111.04	0.00	0.00	0.00
9,300.00	90.00	179.57	6,534.00	-3,187.14	-563.26	3,210.88	0.00	0.00	0.00
9,400.00	90.00	179.57	6,534.00	-3,287.13	-562.51	3,310.72	0.00	0.00	0.00
9,500.00	90.00	179.57	6,534.00	-3,387.13	-561.77	3,410.56	0.00	0.00	0.00
9,600.00	90.00	179.57	6,534.00	-3,487.13	-561.02	3,510.41	0.00	0.00	0.00
9,700.00	90.00	179.57	6,534.00	-3,587.12	-560.28	3,610.25	0.00	0.00	0.00
9,800.00	90.00	179.57	6,534.00	-3,687.12	-559.53	3,710.09	0.00	0.00	0.00
9,900.00	90.00	179.57	6,534.00	-3,787.12	-558.79	3,809.93	0.00	0.00	0.00

<b>Database:</b>	DB_Jul2216dt_v14	<b>Local Co-ordinate Reference:</b>	Well 70 Ranch 10-08-4L
<b>Company:</b>	Confluence Resources	<b>TVD Reference:</b>	Mean Sea Level
<b>Project:</b>	Weld County, Colorado	<b>MD Reference:</b>	RKB=4592+24 @ 4624.00ft
<b>Site:</b>	Section 03-T04N-R63W	<b>North Reference:</b>	True
<b>Well:</b>	70 Ranch 10-08-4L	<b>Survey Calculation Method:</b>	Minimum Curvature
<b>Wellbore:</b>	Original Hole		
<b>Design:</b>	plan1		

Planned Survey									
Measured Depth (ft)	Inclination (°)	Azimuth (°)	TVD Below System (ft)	+N/-S (ft)	+E/-W (ft)	Vertical Section (ft)	Dogleg Rate (°/100ft)	Build Rate (°/100ft)	Turn Rate (°/100ft)
10,000.00	90.00	179.57	6,534.00	-3,887.12	-558.04	3,909.77	0.00	0.00	0.00
10,100.00	90.00	179.57	6,534.00	-3,987.11	-557.30	4,009.61	0.00	0.00	0.00
10,200.00	90.00	179.57	6,534.00	-4,087.11	-556.55	4,109.45	0.00	0.00	0.00
10,300.00	90.00	179.57	6,534.00	-4,187.11	-555.81	4,209.29	0.00	0.00	0.00
10,400.00	90.00	179.57	6,534.00	-4,287.10	-555.06	4,309.13	0.00	0.00	0.00
10,500.00	90.00	179.57	6,534.00	-4,387.10	-554.32	4,408.97	0.00	0.00	0.00
10,600.00	90.00	179.57	6,534.00	-4,487.10	-553.57	4,508.82	0.00	0.00	0.00
10,700.00	90.00	179.57	6,534.00	-4,587.10	-552.83	4,608.66	0.00	0.00	0.00
10,800.00	90.00	179.57	6,534.00	-4,687.09	-552.08	4,708.50	0.00	0.00	0.00
10,900.00	90.00	179.57	6,534.00	-4,787.09	-551.34	4,808.34	0.00	0.00	0.00
11,000.00	90.00	179.57	6,534.00	-4,887.09	-550.59	4,908.18	0.00	0.00	0.00
11,100.00	90.00	179.57	6,534.00	-4,987.09	-549.85	5,008.02	0.00	0.00	0.00
11,200.00	90.00	179.57	6,534.00	-5,087.08	-549.11	5,107.86	0.00	0.00	0.00
11,300.00	90.00	179.57	6,534.00	-5,187.08	-548.36	5,207.70	0.00	0.00	0.00
11,400.00	90.00	179.57	6,534.00	-5,287.08	-547.62	5,307.54	0.00	0.00	0.00
11,500.00	90.00	179.57	6,534.00	-5,387.07	-546.87	5,407.38	0.00	0.00	0.00
11,600.00	90.00	179.57	6,534.00	-5,487.07	-546.13	5,507.22	0.00	0.00	0.00
11,700.00	90.00	179.57	6,534.00	-5,587.07	-545.38	5,607.07	0.00	0.00	0.00
11,800.00	90.00	179.57	6,534.00	-5,687.07	-544.64	5,706.91	0.00	0.00	0.00
11,900.00	90.00	179.57	6,534.00	-5,787.06	-543.89	5,806.75	0.00	0.00	0.00
12,000.00	90.00	179.57	6,534.00	-5,887.06	-543.15	5,906.59	0.00	0.00	0.00
12,100.00	90.00	179.57	6,534.00	-5,987.06	-542.40	6,006.43	0.00	0.00	0.00
12,200.00	90.00	179.57	6,534.00	-6,087.06	-541.66	6,106.27	0.00	0.00	0.00
12,300.00	90.00	179.57	6,534.00	-6,187.05	-540.91	6,206.11	0.00	0.00	0.00
12,400.00	90.00	179.57	6,534.00	-6,287.05	-540.17	6,305.95	0.00	0.00	0.00
12,500.00	90.00	179.57	6,534.00	-6,387.05	-539.42	6,405.79	0.00	0.00	0.00
12,600.00	90.00	179.57	6,534.00	-6,487.04	-538.68	6,505.63	0.00	0.00	0.00
12,700.00	90.00	179.57	6,534.00	-6,587.04	-537.93	6,605.47	0.00	0.00	0.00
12,800.00	90.00	179.57	6,534.00	-6,687.04	-537.19	6,705.32	0.00	0.00	0.00
12,900.00	90.00	179.57	6,534.00	-6,787.04	-536.44	6,805.16	0.00	0.00	0.00
13,000.00	90.00	179.57	6,534.00	-6,887.03	-535.70	6,905.00	0.00	0.00	0.00
13,100.00	90.00	179.57	6,534.00	-6,987.03	-534.95	7,004.84	0.00	0.00	0.00
13,200.00	90.00	179.57	6,534.00	-7,087.03	-534.21	7,104.68	0.00	0.00	0.00
13,300.00	90.00	179.57	6,534.00	-7,187.02	-533.46	7,204.52	0.00	0.00	0.00
13,400.00	90.00	179.57	6,534.00	-7,287.02	-532.72	7,304.36	0.00	0.00	0.00
13,500.00	90.00	179.57	6,534.00	-7,387.02	-531.97	7,404.20	0.00	0.00	0.00
13,600.00	90.00	179.57	6,534.00	-7,487.02	-531.23	7,504.04	0.00	0.00	0.00
13,700.00	90.00	179.57	6,534.00	-7,587.01	-530.48	7,603.88	0.00	0.00	0.00
13,800.00	90.00	179.57	6,534.00	-7,687.01	-529.74	7,703.73	0.00	0.00	0.00
13,900.00	90.00	179.57	6,534.00	-7,787.01	-528.99	7,803.57	0.00	0.00	0.00
14,000.00	90.00	179.57	6,534.00	-7,887.01	-528.25	7,903.41	0.00	0.00	0.00
14,100.00	90.00	179.57	6,534.00	-7,987.00	-527.50	8,003.25	0.00	0.00	0.00
14,200.00	90.00	179.57	6,534.00	-8,087.00	-526.76	8,103.09	0.00	0.00	0.00
14,300.00	90.00	179.57	6,534.00	-8,187.00	-526.01	8,202.93	0.00	0.00	0.00
14,400.00	90.00	179.57	6,534.00	-8,286.99	-525.27	8,302.77	0.00	0.00	0.00
14,500.00	90.00	179.57	6,534.00	-8,386.99	-524.52	8,402.61	0.00	0.00	0.00
14,600.00	90.00	179.57	6,534.00	-8,486.99	-523.78	8,502.45	0.00	0.00	0.00
14,700.00	90.00	179.57	6,534.00	-8,586.99	-523.03	8,602.29	0.00	0.00	0.00
14,800.00	90.00	179.57	6,534.00	-8,686.98	-522.29	8,702.13	0.00	0.00	0.00
14,900.00	90.00	179.57	6,534.00	-8,786.98	-521.54	8,801.98	0.00	0.00	0.00
15,000.00	90.00	179.57	6,534.00	-8,886.98	-520.80	8,901.82	0.00	0.00	0.00
15,100.00	90.00	179.57	6,534.00	-8,986.97	-520.05	9,001.66	0.00	0.00	0.00
15,200.00	90.00	179.57	6,534.00	-9,086.97	-519.31	9,101.50	0.00	0.00	0.00
15,300.00	90.00	179.57	6,534.00	-9,186.97	-518.56	9,201.34	0.00	0.00	0.00

<b>Database:</b>	DB_Jul2216dt_v14	<b>Local Co-ordinate Reference:</b>	Well 70 Ranch 10-08-4L
<b>Company:</b>	Confluence Resources	<b>TVD Reference:</b>	Mean Sea Level
<b>Project:</b>	Weld County, Colorado	<b>MD Reference:</b>	RKB=4592+24 @ 4624.00ft
<b>Site:</b>	Section 03-T04N-R63W	<b>North Reference:</b>	True
<b>Well:</b>	70 Ranch 10-08-4L	<b>Survey Calculation Method:</b>	Minimum Curvature
<b>Wellbore:</b>	Original Hole		
<b>Design:</b>	plan1		

Planned Survey										
Measured Depth (ft)	Inclination (°)	Azimuth (°)	TVD Below System (ft)	+N/-S (ft)	+E/-W (ft)	Vertical Section (ft)	Dogleg Rate (°/100ft)	Build Rate (°/100ft)	Turn Rate (°/100ft)	
15,400.00	90.00	179.57	6,534.00	-9,286.97	-517.82	9,301.18	0.00	0.00	0.00	
15,500.00	90.00	179.57	6,534.00	-9,386.96	-517.07	9,401.02	0.00	0.00	0.00	
15,600.00	90.00	179.57	6,534.00	-9,486.96	-516.33	9,500.86	0.00	0.00	0.00	
15,700.00	90.00	179.57	6,534.00	-9,586.96	-515.58	9,600.70	0.00	0.00	0.00	
15,800.00	90.00	179.57	6,534.00	-9,686.96	-514.84	9,700.54	0.00	0.00	0.00	
15,900.00	90.00	179.57	6,534.00	-9,786.95	-514.09	9,800.38	0.00	0.00	0.00	
16,000.00	90.00	179.57	6,534.00	-9,886.95	-513.35	9,900.23	0.00	0.00	0.00	
16,100.00	90.00	179.57	6,534.00	-9,986.95	-512.60	10,000.07	0.00	0.00	0.00	
16,200.00	90.00	179.57	6,534.00	-10,086.94	-511.86	10,099.91	0.00	0.00	0.00	
16,300.00	90.00	179.57	6,534.00	-10,186.94	-511.11	10,199.75	0.00	0.00	0.00	
16,400.00	90.00	179.57	6,534.00	-10,286.94	-510.37	10,299.59	0.00	0.00	0.00	
16,500.00	90.00	179.57	6,534.00	-10,386.94	-509.62	10,399.43	0.00	0.00	0.00	
16,511.62	90.00	179.57	6,534.00	-10,398.56	-509.54	10,411.03	0.00	0.00	0.00	
<b>PBHL/TD 16511.62 MD/6534.00 TVD</b>										
16,511.63	90.00	179.57	6,534.00	-10,398.56	-509.54	10,411.04	0.00	0.00	0.00	

Design Targets										
Target Name	Dip Angle (°)	Dip Dir. (°)	TVD (ft)	+N/-S (ft)	+E/-W (ft)	Northing (usft)	Easting (usft)	Latitude	Longitude	
- hit/miss target										
- Shape										
70 Ranch 10-08-4L LP 4	0.00	0.37	6,534.00	-792.09	-581.10	14,648,338.93	1,798,655.62	40.33254890	-104.43220122	
- plan hits target center										
- Point										
70 Ranch 10-08-4L BHL	0.00	0.37	6,534.00	-10,398.56	-509.54	14,638,733.14	1,798,789.03	40.30616996	-104.43194365	
- plan hits target center										
- Point										
70 Ranch 10-08-4L SL 2	0.00	0.37	-4,592.00	-29.27	-3.79	14,649,105.45	1,799,228.01	40.33464358	-104.43012974	
- plan misses target center by 4592.09ft at 0.00ft MD (0.00 TVD, 0.00 N, 0.00 E)										
- Point										

Plan Annotations					
Measured Depth (ft)	Vertical Depth (ft)	Local Coordinates			
		+N/-S (ft)	+E/-W (ft)	Comment	
2,000.00	2,000.00	0.00	0.00	KOP Begin 10°/100' build	
2,080.56	2,080.30	-2.22	-5.20	Begin 8.06° tangent	
6,035.83	5,996.53	-219.46	-515.16	Begin 10°/100' build/turn	
6,904.89	6,534.00	-792.09	-581.10	LP Begin 90° lateral	
16,511.62	6,534.00	-10,398.56	-509.54	PBHL/TD 16511.62 MD/6534.00 TVD	

<b>Database:</b>	DB_Jul2216dt_v14	<b>Local Co-ordinate Reference:</b>	Well 70 Ranch 10-08-4L
<b>Company:</b>	Confluence Resources	<b>TVD Reference:</b>	Mean Sea Level
<b>Project:</b>	Weld County, Colorado	<b>MD Reference:</b>	RKB=4592+24 @ 4624.00ft
<b>Site:</b>	Section 03-T04N-R63W	<b>North Reference:</b>	True
<b>Well:</b>	70 Ranch 10-08-4L	<b>Survey Calculation Method:</b>	Minimum Curvature
<b>Wellbore:</b>	Original Hole		
<b>Design:</b>	plan1		

<b>Project</b>	Weld County, Colorado		
<b>Map System:</b>	Universal Transverse Mercator (US Survey Feet)	<b>System Datum:</b>	Mean Sea Level
<b>Geo Datum:</b>	NAD83 Colorado - HARN		
<b>Map Zone:</b>	Zone 13N (108 W to 102 W)		

Site		Section 03-T04N-R63W			
Site Position:		Northing:	14,650,244.32 usft	Latitude:	40.33774036
From:	Map	Easting:	1,800,940.24 usft	Longitude:	-104.42395937
Position Uncertainty:	0.00 ft	Slot Radius:	13-3/16 "	Grid Convergence:	0.37 °

Well	70 Ranch 10-08-4L, Surf loc: 260 FSL 1037 FWL Section 03-T04N-R63W					
Well Position	+N/-S	0.00 ft	Northing:	14,649,134.75 usft	Latitude:	40.33472397
	+E/-W	0.00 ft	Easting:	1,799,231.61 usft	Longitude:	-104.43011615
Position Uncertainty		0.00 ft	Wellhead Elevation:		Ground Level:	4,592.00 ft

<b>Wellbore</b>	Original Hole				
<b>Magnetics</b>	<b>Model Name</b>	<b>Sample Date</b>	<b>Declination (°)</b>	<b>Dip Angle (°)</b>	<b>Field Strength (nT)</b>
	HDGM	5/21/2018	8.10	66.92	52,259.60000000

<b>Design</b>	plan1			
<b>Audit Notes:</b>				
<b>Version:</b>	<b>Phase:</b>	PLAN	<b>Tie On Depth:</b>	0.00
<b>Vertical Section:</b>	<b>Depth From (TVD) (ft)</b>	<b>+N/-S (ft)</b>	<b>+E/-W (ft)</b>	<b>Direction (°)</b>
	-4,624.00	0.00	0.00	182.81

<b>Plan Survey Tool Program</b>	<b>Date</b>	5/21/2018		
<b>Depth From (ft)</b>	<b>Depth To (ft)</b>	<b>Survey (Wellbore)</b>	<b>Tool Name</b>	<b>Remarks</b>
1	0.00	16,511.63 plan1 (Original Hole)		

<b>Plan Sections</b>										
<b>Measured Depth (ft)</b>	<b>Inclination (°)</b>	<b>Azimuth (°)</b>	<b>TVD Below System (ft)</b>	<b>+N/-S (ft)</b>	<b>+E/-W (ft)</b>	<b>Dogleg Rate (°/100ft)</b>	<b>Build Rate (°/100ft)</b>	<b>Turn Rate (°/100ft)</b>	<b>TFO (°)</b>	<b>Target</b>
0.00	0.00	0.00	0.00	0.00	0.00	0.00	0.00	0.00	0.00	
2,000.00	0.00	0.00	2,000.00	0.00	0.00	0.00	0.00	0.00	0.00	
2,080.56	8.06	246.93	2,080.30	-2.22	-5.20	10.00	10.00	0.00	246.93	
6,035.83	8.06	246.93	5,996.53	-219.46	-515.16	0.00	0.00	0.00	0.00	
6,904.89	90.00	179.57	6,534.00	-792.09	-581.10	10.00	9.43	-7.75	-67.55	70 Ranch 10-08-4L LI
16,511.63	90.00	179.57	6,534.00	-10,398.56	-509.54	0.00	0.00	0.00	0.00	70 Ranch 10-08-4L BI



<b>Database:</b>	DB_Jul2216dt_v14	<b>Local Co-ordinate Reference:</b>	Well 70 Ranch 10-08-4L
<b>Company:</b>	Confluence Resources	<b>TVD Reference:</b>	Mean Sea Level
<b>Project:</b>	Weld County, Colorado	<b>MD Reference:</b>	RKB=4592+24 @ 4624.00ft
<b>Site:</b>	Section 03-T04N-R63W	<b>North Reference:</b>	True
<b>Well:</b>	70 Ranch 10-08-4L	<b>Survey Calculation Method:</b>	Minimum Curvature
<b>Wellbore:</b>	Original Hole		
<b>Design:</b>	plan1		

Planned Survey									
Measured Depth (ft)	Inclination (°)	Azimuth (°)	TVD Below System (ft)	+N/-S (ft)	+E/-W (ft)	Map Northing (usft)	Map Easting (usft)	Latitude	Longitude
0.00	0.00	0.00	0.00	0.00	0.00	14,649,134.75	1,799,231.61	40.33472397	-104.43011615
100.00	0.00	0.00	100.00	0.00	0.00	14,649,134.75	1,799,231.61	40.33472397	-104.43011615
200.00	0.00	0.00	200.00	0.00	0.00	14,649,134.75	1,799,231.61	40.33472397	-104.43011615
300.00	0.00	0.00	300.00	0.00	0.00	14,649,134.75	1,799,231.61	40.33472397	-104.43011615
400.00	0.00	0.00	400.00	0.00	0.00	14,649,134.75	1,799,231.61	40.33472397	-104.43011615
500.00	0.00	0.00	500.00	0.00	0.00	14,649,134.75	1,799,231.61	40.33472397	-104.43011615
600.00	0.00	0.00	600.00	0.00	0.00	14,649,134.75	1,799,231.61	40.33472397	-104.43011615
700.00	0.00	0.00	700.00	0.00	0.00	14,649,134.75	1,799,231.61	40.33472397	-104.43011615
800.00	0.00	0.00	800.00	0.00	0.00	14,649,134.75	1,799,231.61	40.33472397	-104.43011615
900.00	0.00	0.00	900.00	0.00	0.00	14,649,134.75	1,799,231.61	40.33472397	-104.43011615
1,000.00	0.00	0.00	1,000.00	0.00	0.00	14,649,134.75	1,799,231.61	40.33472397	-104.43011615
1,100.00	0.00	0.00	1,100.00	0.00	0.00	14,649,134.75	1,799,231.61	40.33472397	-104.43011615
1,200.00	0.00	0.00	1,200.00	0.00	0.00	14,649,134.75	1,799,231.61	40.33472397	-104.43011615
1,300.00	0.00	0.00	1,300.00	0.00	0.00	14,649,134.75	1,799,231.61	40.33472397	-104.43011615
1,400.00	0.00	0.00	1,400.00	0.00	0.00	14,649,134.75	1,799,231.61	40.33472397	-104.43011615
1,500.00	0.00	0.00	1,500.00	0.00	0.00	14,649,134.75	1,799,231.61	40.33472397	-104.43011615
1,600.00	0.00	0.00	1,600.00	0.00	0.00	14,649,134.75	1,799,231.61	40.33472397	-104.43011615
1,700.00	0.00	0.00	1,700.00	0.00	0.00	14,649,134.75	1,799,231.61	40.33472397	-104.43011615
1,800.00	0.00	0.00	1,800.00	0.00	0.00	14,649,134.75	1,799,231.61	40.33472397	-104.43011615
1,900.00	0.00	0.00	1,900.00	0.00	0.00	14,649,134.75	1,799,231.61	40.33472397	-104.43011615
2,000.00	0.00	0.00	2,000.00	0.00	0.00	14,649,134.75	1,799,231.61	40.33472397	-104.43011615
<b>KOP Begin 10°/100' build</b>									
2,080.56	8.06	246.93	2,080.30	-2.22	-5.20	14,649,132.50	1,799,226.42	40.33471788	-104.43013482
<b>Begin 8.06° tangent</b>									
2,100.00	8.06	246.93	2,099.54	-3.28	-7.71	14,649,131.41	1,799,223.92	40.33471495	-104.43014381
2,200.00	8.06	246.93	2,198.56	-8.78	-20.60	14,649,125.84	1,799,211.07	40.33469987	-104.43019008
2,300.00	8.06	246.93	2,297.57	-14.27	-33.49	14,649,120.26	1,799,198.21	40.33468478	-104.43023634
2,400.00	8.06	246.93	2,396.58	-19.76	-46.39	14,649,114.69	1,799,185.35	40.33466970	-104.43028260
2,500.00	8.06	246.93	2,495.60	-25.25	-59.28	14,649,109.11	1,799,172.49	40.33465462	-104.43032887
2,600.00	8.06	246.93	2,594.61	-30.75	-72.17	14,649,103.54	1,799,159.64	40.33463954	-104.43037513
2,700.00	8.06	246.93	2,693.62	-36.24	-85.07	14,649,097.96	1,799,146.78	40.33462445	-104.43042139
2,800.00	8.06	246.93	2,792.63	-41.73	-97.96	14,649,092.39	1,799,133.92	40.33460937	-104.43046766
2,900.00	8.06	246.93	2,891.65	-47.22	-110.85	14,649,086.81	1,799,121.06	40.33459429	-104.43051392
3,000.00	8.06	246.93	2,990.66	-52.72	-123.75	14,649,081.23	1,799,108.21	40.33457921	-104.43056018
3,100.00	8.06	246.93	3,089.67	-58.21	-136.64	14,649,075.66	1,799,095.35	40.33456412	-104.43060645
3,200.00	8.06	246.93	3,188.69	-63.70	-149.53	14,649,070.08	1,799,082.49	40.33454904	-104.43065271
3,300.00	8.06	246.93	3,287.70	-69.20	-162.42	14,649,064.51	1,799,069.63	40.33453396	-104.43069897
3,400.00	8.06	246.93	3,386.71	-74.69	-175.32	14,649,058.93	1,799,056.78	40.33451888	-104.43074524
3,500.00	8.06	246.93	3,485.73	-80.18	-188.21	14,649,053.36	1,799,043.92	40.33450379	-104.43079150
3,600.00	8.06	246.93	3,584.74	-85.67	-201.10	14,649,047.78	1,799,031.06	40.33448871	-104.43083776
3,700.00	8.06	246.93	3,683.75	-91.17	-214.00	14,649,042.21	1,799,018.20	40.33447363	-104.43088403
3,800.00	8.06	246.93	3,782.77	-96.66	-226.89	14,649,036.63	1,799,005.35	40.33445855	-104.43093029
3,900.00	8.06	246.93	3,881.78	-102.15	-239.78	14,649,031.06	1,798,992.49	40.33444346	-104.43097655
4,000.00	8.06	246.93	3,980.79	-107.64	-252.68	14,649,025.48	1,798,979.63	40.33442838	-104.43102282
4,100.00	8.06	246.93	4,079.81	-113.14	-265.57	14,649,019.90	1,798,966.78	40.33441330	-104.43106908
4,200.00	8.06	246.93	4,178.82	-118.63	-278.46	14,649,014.33	1,798,953.92	40.33439821	-104.43111534
4,300.00	8.06	246.93	4,277.83	-124.12	-291.36	14,649,008.75	1,798,941.06	40.33438313	-104.43116161
4,400.00	8.06	246.93	4,376.85	-129.61	-304.25	14,649,003.18	1,798,928.20	40.33436805	-104.43120787
4,500.00	8.06	246.93	4,475.86	-135.11	-317.14	14,648,997.60	1,798,915.35	40.33435297	-104.43125413
4,600.00	8.06	246.93	4,574.87	-140.60	-330.03	14,648,992.03	1,798,902.49	40.33433788	-104.43130039
4,700.00	8.06	246.93	4,673.88	-146.09	-342.93	14,648,986.45	1,798,889.63	40.33432280	-104.43134666
4,800.00	8.06	246.93	4,772.90	-151.58	-355.82	14,648,980.88	1,798,876.77	40.33430772	-104.43139292
4,900.00	8.06	246.93	4,871.91	-157.08	-368.71	14,648,975.30	1,798,863.92	40.33429263	-104.43143918
5,000.00	8.06	246.93	4,970.92	-162.57	-381.61	14,648,969.72	1,798,851.06	40.33427755	-104.43148545



<b>Database:</b>	DB_Jul2216dt_v14	<b>Local Co-ordinate Reference:</b>	Well 70 Ranch 10-08-4L
<b>Company:</b>	Confluence Resources	<b>TVD Reference:</b>	Mean Sea Level
<b>Project:</b>	Weld County, Colorado	<b>MD Reference:</b>	RKB=4592+24 @ 4624.00ft
<b>Site:</b>	Section 03-T04N-R63W	<b>North Reference:</b>	True
<b>Well:</b>	70 Ranch 10-08-4L	<b>Survey Calculation Method:</b>	Minimum Curvature
<b>Wellbore:</b>	Original Hole		
<b>Design:</b>	plan1		

Planned Survey										
Measured Depth (ft)	Inclination (°)	Azimuth (°)	TVD Below System (ft)	+N/-S (ft)	+E/-W (ft)	Map Northing (usft)	Map Easting (usft)	Latitude	Longitude	
5,100.00	8.06	246.93	5,069.94	-168.06	-394.50	14,648,964.15	1,798,838.20	40.33426247	-104.43153171	
5,200.00	8.06	246.93	5,168.95	-173.55	-407.39	14,648,958.57	1,798,825.34	40.33424738	-104.43157797	
5,300.00	8.06	246.93	5,267.96	-179.05	-420.29	14,648,953.00	1,798,812.49	40.33423230	-104.43162424	
5,400.00	8.06	246.93	5,366.98	-184.54	-433.18	14,648,947.42	1,798,799.63	40.33421722	-104.43167050	
5,500.00	8.06	246.93	5,465.99	-190.03	-446.07	14,648,941.85	1,798,786.77	40.33420214	-104.43171676	
5,600.00	8.06	246.93	5,565.00	-195.53	-458.97	14,648,936.27	1,798,773.91	40.33418705	-104.43176302	
5,700.00	8.06	246.93	5,664.02	-201.02	-471.86	14,648,930.70	1,798,761.06	40.33417197	-104.43180929	
5,800.00	8.06	246.93	5,763.03	-206.51	-484.75	14,648,925.12	1,798,748.20	40.33415689	-104.43185555	
5,900.00	8.06	246.93	5,862.04	-212.00	-497.64	14,648,919.55	1,798,735.34	40.33414180	-104.43190181	
6,000.00	8.06	246.93	5,961.06	-217.50	-510.54	14,648,913.97	1,798,722.48	40.33412672	-104.43194807	
6,035.83	8.06	246.93	5,996.53	-219.46	-515.16	14,648,911.97	1,798,717.88	40.33412132	-104.43196465	
Begin 10°/100' build/turn										
6,100.00	12.06	217.28	6,059.74	-226.57	-523.36	14,648,904.82	1,798,709.72	40.33410181	-104.43199409	
6,200.00	20.83	199.65	6,155.62	-251.68	-535.70	14,648,879.62	1,798,697.54	40.33403284	-104.43203835	
6,300.00	30.35	192.46	6,245.72	-293.20	-547.16	14,648,838.03	1,798,686.35	40.33391883	-104.43207948	
6,400.00	40.09	188.50	6,327.33	-349.87	-557.40	14,648,781.30	1,798,676.48	40.33376324	-104.43211621	
6,500.00	49.92	185.88	6,397.95	-419.95	-566.10	14,648,711.16	1,798,668.23	40.33357079	-104.43214743	
6,600.00	59.79	183.93	6,455.44	-501.32	-573.00	14,648,629.75	1,798,661.85	40.33334735	-104.43217220	
6,700.00	69.69	182.34	6,498.06	-591.51	-577.90	14,648,539.53	1,798,657.53	40.33309969	-104.43218975	
6,800.00	79.60	180.95	6,524.51	-687.78	-580.64	14,648,443.24	1,798,655.41	40.33283534	-104.43219957	
6,900.00	89.51	179.64	6,533.98	-787.20	-581.13	14,648,343.82	1,798,655.56	40.33256233	-104.43220134	
6,904.89	90.00	179.57	6,534.00	-792.09	-581.10	14,648,338.93	1,798,655.62	40.33254890	-104.43220122	
LP Begin 90° lateral										
7,000.00	90.00	179.57	6,534.00	-887.20	-580.39	14,648,243.83	1,798,656.94	40.33228774	-104.43219867	
7,100.00	90.00	179.57	6,534.00	-987.20	-579.65	14,648,143.84	1,798,658.33	40.33201316	-104.43219599	
7,200.00	90.00	179.57	6,534.00	-1,087.19	-578.90	14,648,043.85	1,798,659.72	40.33173857	-104.43219331	
7,300.00	90.00	179.57	6,534.00	-1,187.19	-578.16	14,647,943.86	1,798,661.11	40.33146398	-104.43219062	
7,400.00	90.00	179.57	6,534.00	-1,287.19	-577.41	14,647,843.87	1,798,662.50	40.33118939	-104.43218794	
7,500.00	90.00	179.57	6,534.00	-1,387.19	-576.67	14,647,743.88	1,798,663.89	40.33091481	-104.43218526	
7,600.00	90.00	179.57	6,534.00	-1,487.18	-575.92	14,647,643.89	1,798,665.28	40.33064022	-104.43218258	
7,700.00	90.00	179.57	6,534.00	-1,587.18	-575.18	14,647,543.90	1,798,666.66	40.33036563	-104.43217990	
7,800.00	90.00	179.57	6,534.00	-1,687.18	-574.43	14,647,443.91	1,798,668.05	40.33009104	-104.43217722	
7,900.00	90.00	179.57	6,534.00	-1,787.17	-573.69	14,647,343.92	1,798,669.44	40.32981645	-104.43217454	
8,000.00	90.00	179.57	6,534.00	-1,887.17	-572.94	14,647,243.93	1,798,670.83	40.32954187	-104.43217185	
8,100.00	90.00	179.57	6,534.00	-1,987.17	-572.20	14,647,143.94	1,798,672.22	40.32926728	-104.43216917	
8,200.00	90.00	179.57	6,534.00	-2,087.17	-571.45	14,647,043.95	1,798,673.61	40.32899269	-104.43216649	
8,300.00	90.00	179.57	6,534.00	-2,187.16	-570.71	14,646,943.96	1,798,675.00	40.32871810	-104.43216381	
8,400.00	90.00	179.57	6,534.00	-2,287.16	-569.96	14,646,843.97	1,798,676.39	40.32844352	-104.43216113	
8,500.00	90.00	179.57	6,534.00	-2,387.16	-569.22	14,646,743.98	1,798,677.77	40.32816893	-104.43215845	
8,600.00	90.00	179.57	6,534.00	-2,487.15	-568.47	14,646,643.99	1,798,679.16	40.32789434	-104.43215577	
8,700.00	90.00	179.57	6,534.00	-2,587.15	-567.73	14,646,544.00	1,798,680.55	40.32761975	-104.43215308	
8,800.00	90.00	179.57	6,534.00	-2,687.15	-566.98	14,646,444.01	1,798,681.94	40.32734517	-104.43215040	
8,900.00	90.00	179.57	6,534.00	-2,787.15	-566.24	14,646,344.02	1,798,683.33	40.32707058	-104.43214772	
9,000.00	90.00	179.57	6,534.00	-2,887.14	-565.49	14,646,244.03	1,798,684.72	40.32679599	-104.43214504	
9,100.00	90.00	179.57	6,534.00	-2,987.14	-564.75	14,646,144.04	1,798,686.11	40.32652140	-104.43214236	
9,200.00	90.00	179.57	6,534.00	-3,087.14	-564.00	14,646,044.05	1,798,687.50	40.32624682	-104.43213968	
9,300.00	90.00	179.57	6,534.00	-3,187.14	-563.26	14,645,944.06	1,798,688.88	40.32597223	-104.43213700	
9,400.00	90.00	179.57	6,534.00	-3,287.13	-562.51	14,645,844.07	1,798,690.27	40.32569764	-104.43213431	
9,500.00	90.00	179.57	6,534.00	-3,387.13	-561.77	14,645,744.08	1,798,691.66	40.32542305	-104.43213163	
9,600.00	90.00	179.57	6,534.00	-3,487.13	-561.02	14,645,644.09	1,798,693.05	40.32514846	-104.43212895	
9,700.00	90.00	179.57	6,534.00	-3,587.12	-560.28	14,645,544.10	1,798,694.44	40.32487388	-104.43212627	
9,800.00	90.00	179.57	6,534.00	-3,687.12	-559.53	14,645,444.11	1,798,695.83	40.32459929	-104.43212359	
9,900.00	90.00	179.57	6,534.00	-3,787.12	-558.79	14,645,344.12	1,798,697.22	40.32432470	-104.43212091	
10,000.00	90.00	179.57	6,534.00	-3,887.12	-558.04	14,645,244.13	1,798,698.60	40.32405011	-104.43211823	

<b>Database:</b>	DB_Jul2216dt_v14	<b>Local Co-ordinate Reference:</b>	Well 70 Ranch 10-08-4L
<b>Company:</b>	Confluence Resources	<b>TVD Reference:</b>	Mean Sea Level
<b>Project:</b>	Weld County, Colorado	<b>MD Reference:</b>	RKB=4592+24 @ 4624.00ft
<b>Site:</b>	Section 03-T04N-R63W	<b>North Reference:</b>	True
<b>Well:</b>	70 Ranch 10-08-4L	<b>Survey Calculation Method:</b>	Minimum Curvature
<b>Wellbore:</b>	Original Hole		
<b>Design:</b>	plan1		

Planned Survey									
Measured Depth (ft)	Inclination (°)	Azimuth (°)	TVD Below System (ft)	+N/-S (ft)	+E/-W (ft)	Map Northing (usft)	Map Easting (usft)	Latitude	Longitude
10,100.00	90.00	179.57	6,534.00	-3,987.11	-557.30	14,645,144.14	1,798,699.99	40.32377553	-104.43211554
10,200.00	90.00	179.57	6,534.00	-4,087.11	-556.55	14,645,044.15	1,798,701.38	40.32350094	-104.43211286
10,300.00	90.00	179.57	6,534.00	-4,187.11	-555.81	14,644,944.16	1,798,702.77	40.32322635	-104.43211018
10,400.00	90.00	179.57	6,534.00	-4,287.10	-555.06	14,644,844.17	1,798,704.16	40.32295176	-104.43210750
10,500.00	90.00	179.57	6,534.00	-4,387.10	-554.32	14,644,744.18	1,798,705.55	40.32267717	-104.43210482
10,600.00	90.00	179.57	6,534.00	-4,487.10	-553.57	14,644,644.19	1,798,706.94	40.32240259	-104.43210214
10,700.00	90.00	179.57	6,534.00	-4,587.10	-552.83	14,644,544.20	1,798,708.33	40.32212800	-104.43209946
10,800.00	90.00	179.57	6,534.00	-4,687.09	-552.08	14,644,444.21	1,798,709.71	40.32185341	-104.43209678
10,900.00	90.00	179.57	6,534.00	-4,787.09	-551.34	14,644,344.22	1,798,711.10	40.32157882	-104.43209409
11,000.00	90.00	179.57	6,534.00	-4,887.09	-550.59	14,644,244.23	1,798,712.49	40.32130423	-104.43209141
11,100.00	90.00	179.57	6,534.00	-4,987.09	-549.85	14,644,144.24	1,798,713.88	40.32102965	-104.43208873
11,200.00	90.00	179.57	6,534.00	-5,087.08	-549.11	14,644,044.25	1,798,715.27	40.32075506	-104.43208605
11,300.00	90.00	179.57	6,534.00	-5,187.08	-548.36	14,643,944.25	1,798,716.66	40.32048047	-104.43208337
11,400.00	90.00	179.57	6,534.00	-5,287.08	-547.62	14,643,844.26	1,798,718.05	40.32020588	-104.43208069
11,500.00	90.00	179.57	6,534.00	-5,387.07	-546.87	14,643,744.27	1,798,719.44	40.31993129	-104.43207801
11,600.00	90.00	179.57	6,534.00	-5,487.07	-546.13	14,643,644.28	1,798,720.82	40.31965671	-104.43207533
11,700.00	90.00	179.57	6,534.00	-5,587.07	-545.38	14,643,544.29	1,798,722.21	40.31938212	-104.43207265
11,800.00	90.00	179.57	6,534.00	-5,687.07	-544.64	14,643,444.30	1,798,723.60	40.31910753	-104.43206996
11,900.00	90.00	179.57	6,534.00	-5,787.06	-543.89	14,643,344.31	1,798,724.99	40.31883294	-104.43206728
12,000.00	90.00	179.57	6,534.00	-5,887.06	-543.15	14,643,244.32	1,798,726.38	40.31855835	-104.43206460
12,100.00	90.00	179.57	6,534.00	-5,987.06	-542.40	14,643,144.33	1,798,727.77	40.31828377	-104.43206192
12,200.00	90.00	179.57	6,534.00	-6,087.06	-541.66	14,643,044.34	1,798,729.16	40.31800918	-104.43205924
12,300.00	90.00	179.57	6,534.00	-6,187.05	-540.91	14,642,944.35	1,798,730.55	40.31773459	-104.43205656
12,400.00	90.00	179.57	6,534.00	-6,287.05	-540.17	14,642,844.36	1,798,731.93	40.31746000	-104.43205388
12,500.00	90.00	179.57	6,534.00	-6,387.05	-539.42	14,642,744.37	1,798,733.32	40.31718541	-104.43205120
12,600.00	90.00	179.57	6,534.00	-6,487.04	-538.68	14,642,644.38	1,798,734.71	40.31691082	-104.43204852
12,700.00	90.00	179.57	6,534.00	-6,587.04	-537.93	14,642,544.39	1,798,736.10	40.31663624	-104.43204583
12,800.00	90.00	179.57	6,534.00	-6,687.04	-537.19	14,642,444.40	1,798,737.49	40.31636165	-104.43204315
12,900.00	90.00	179.57	6,534.00	-6,787.04	-536.44	14,642,344.41	1,798,738.88	40.31608706	-104.43204047
13,000.00	90.00	179.57	6,534.00	-6,887.03	-535.70	14,642,244.42	1,798,740.27	40.31581247	-104.43203779
13,100.00	90.00	179.57	6,534.00	-6,987.03	-534.95	14,642,144.43	1,798,741.65	40.31553788	-104.43203511
13,200.00	90.00	179.57	6,534.00	-7,087.03	-534.21	14,642,044.44	1,798,743.04	40.31526330	-104.43203243
13,300.00	90.00	179.57	6,534.00	-7,187.02	-533.46	14,641,944.45	1,798,744.43	40.31498871	-104.43202975
13,400.00	90.00	179.57	6,534.00	-7,287.02	-532.72	14,641,844.46	1,798,745.82	40.31471412	-104.43202707
13,500.00	90.00	179.57	6,534.00	-7,387.02	-531.97	14,641,744.47	1,798,747.21	40.31443953	-104.43202439
13,600.00	90.00	179.57	6,534.00	-7,487.02	-531.23	14,641,644.48	1,798,748.60	40.31416494	-104.43202171
13,700.00	90.00	179.57	6,534.00	-7,587.01	-530.48	14,641,544.49	1,798,749.99	40.31389035	-104.43201902
13,800.00	90.00	179.57	6,534.00	-7,687.01	-529.74	14,641,444.50	1,798,751.38	40.31361577	-104.43201634
13,900.00	90.00	179.57	6,534.00	-7,787.01	-528.99	14,641,344.51	1,798,752.76	40.31334118	-104.43201366
14,000.00	90.00	179.57	6,534.00	-7,887.01	-528.25	14,641,244.52	1,798,754.15	40.31306659	-104.43201098
14,100.00	90.00	179.57	6,534.00	-7,987.00	-527.50	14,641,144.53	1,798,755.54	40.31279201	-104.43200830
14,200.00	90.00	179.57	6,534.00	-8,087.00	-526.76	14,641,044.54	1,798,756.93	40.31251742	-104.43200562
14,300.00	90.00	179.57	6,534.00	-8,187.00	-526.01	14,640,944.55	1,798,758.32	40.31224283	-104.43200294
14,400.00	90.00	179.57	6,534.00	-8,286.99	-525.27	14,640,844.56	1,798,759.71	40.31196825	-104.43200026
14,500.00	90.00	179.57	6,534.00	-8,386.99	-524.52	14,640,744.57	1,798,761.10	40.31169366	-104.43199758
14,600.00	90.00	179.57	6,534.00	-8,486.99	-523.78	14,640,644.58	1,798,762.49	40.31141907	-104.43199490
14,700.00	90.00	179.57	6,534.00	-8,586.99	-523.03	14,640,544.59	1,798,763.87	40.31114448	-104.43199221
14,800.00	90.00	179.57	6,534.00	-8,686.98	-522.29	14,640,444.60	1,798,765.26	40.31086989	-104.43198953
14,900.00	90.00	179.57	6,534.00	-8,786.98	-521.54	14,640,344.61	1,798,766.65	40.31059530	-104.43198685
15,000.00	90.00	179.57	6,534.00	-8,886.98	-520.80	14,640,244.62	1,798,768.04	40.31032072	-104.43198417
15,100.00	90.00	179.57	6,534.00	-8,986.97	-520.05	14,640,144.63	1,798,769.43	40.31004613	-104.43198149
15,200.00	90.00	179.57	6,534.00	-9,086.97	-519.31	14,640,044.64	1,798,770.82	40.30977154	-104.43197881
15,300.00	90.00	179.57	6,534.00	-9,186.97	-518.56	14,639,944.65	1,798,772.21	40.30949695	-104.43197613
15,400.00	90.00	179.57	6,534.00	-9,286.97	-517.82	14,639,844.66	1,798,773.60	40.30922236	-104.43197345
15,500.00	90.00	179.57	6,534.00	-9,386.96	-517.07	14,639,744.67	1,798,774.98	40.30894777	-104.43197077

<b>Database:</b>	DB_Jul2216dt_v14	<b>Local Co-ordinate Reference:</b>	Well 70 Ranch 10-08-4L
<b>Company:</b>	Confluence Resources	<b>TVD Reference:</b>	Mean Sea Level
<b>Project:</b>	Weld County, Colorado	<b>MD Reference:</b>	RKB=4592+24 @ 4624.00ft
<b>Site:</b>	Section 03-T04N-R63W	<b>North Reference:</b>	True
<b>Well:</b>	70 Ranch 10-08-4L	<b>Survey Calculation Method:</b>	Minimum Curvature
<b>Wellbore:</b>	Original Hole		
<b>Design:</b>	plan1		

Planned Survey									
Measured Depth (ft)	Inclination (°)	Azimuth (°)	TVD Below System (ft)	+N/-S (ft)	+E/-W (ft)	Map Northing (usft)	Map Easting (usft)	Latitude	Longitude
15,600.00	90.00	179.57	6,534.00	-9,486.96	-516.33	14,639,644.68	1,798,776.37	40.30867318	-104.43196809
15,700.00	90.00	179.57	6,534.00	-9,586.96	-515.58	14,639,544.69	1,798,777.76	40.30839860	-104.43196541
15,800.00	90.00	179.57	6,534.00	-9,686.96	-514.84	14,639,444.70	1,798,779.15	40.30812401	-104.43196273
15,900.00	90.00	179.57	6,534.00	-9,786.95	-514.09	14,639,344.71	1,798,780.54	40.30784942	-104.43196004
16,000.00	90.00	179.57	6,534.00	-9,886.95	-513.35	14,639,244.72	1,798,781.93	40.30757483	-104.43195736
16,100.00	90.00	179.57	6,534.00	-9,986.95	-512.60	14,639,144.73	1,798,783.32	40.30730024	-104.43195468
16,200.00	90.00	179.57	6,534.00	-10,086.94	-511.86	14,639,044.74	1,798,784.71	40.30702565	-104.43195200
16,300.00	90.00	179.57	6,534.00	-10,186.94	-511.11	14,638,944.75	1,798,786.09	40.30675106	-104.43194932
16,400.00	90.00	179.57	6,534.00	-10,286.94	-510.37	14,638,844.76	1,798,787.48	40.30647647	-104.43194664
16,500.00	90.00	179.57	6,534.00	-10,386.94	-509.62	14,638,744.77	1,798,788.87	40.30620189	-104.43194396
16,511.62	90.00	179.57	6,534.00	-10,398.56	-509.54	14,638,733.15	1,798,789.03	40.30616998	-104.43194365
<b>PBHL/TD 16511.62 MD/6534.00 TVD</b>									
16,511.63	90.00	179.57	6,534.00	-10,398.56	-509.54	14,638,733.14	1,798,789.03	40.30616996	-104.43194365

Design Targets									
Target Name - hit/miss target - Shape	Dip Angle (°)	Dip Dir. (°)	TVD (ft)	+N/-S (ft)	+E/-W (ft)	Northing (usft)	Easting (usft)	Latitude	Longitude
70 Ranch 10-08-4L LP 4 - plan hits target center - Point	0.00	0.37	6,534.00	-792.09	-581.10	14,648,338.93	1,798,655.62	40.33254890	-104.43220122
70 Ranch 10-08-4L BHL - plan hits target center - Point	0.00	0.37	6,534.00	-10,398.56	-509.54	14,638,733.14	1,798,789.03	40.30616996	-104.43194365
70 Ranch 10-08-4L SL 2 - plan misses target center by 4592.09ft at 0.00ft MD (0.00 TVD, 0.00 N, 0.00 E) - Point	0.00	0.37	-4,592.00	-29.27	-3.79	14,649,105.45	1,799,228.01	40.33464358	-104.43012974

Plan Annotations				
Measured Depth (ft)	Vertical Depth (ft)	Local Coordinates		Comment
		+N/-S (ft)	+E/-W (ft)	
2,000.00	2,000.00	0.00	0.00	KOP Begin 10°/100' build
2,080.56	2,080.30	-2.22	-5.20	Begin 8.06° tangent
6,035.83	5,996.53	-219.46	-515.16	Begin 10°/100' build/turn
6,904.89	6,534.00	-792.09	-581.10	LP Begin 90° lateral
16,511.62	6,534.00	-10,398.56	-509.54	PBHL/TD 16511.62 MD/6534.00 TVD