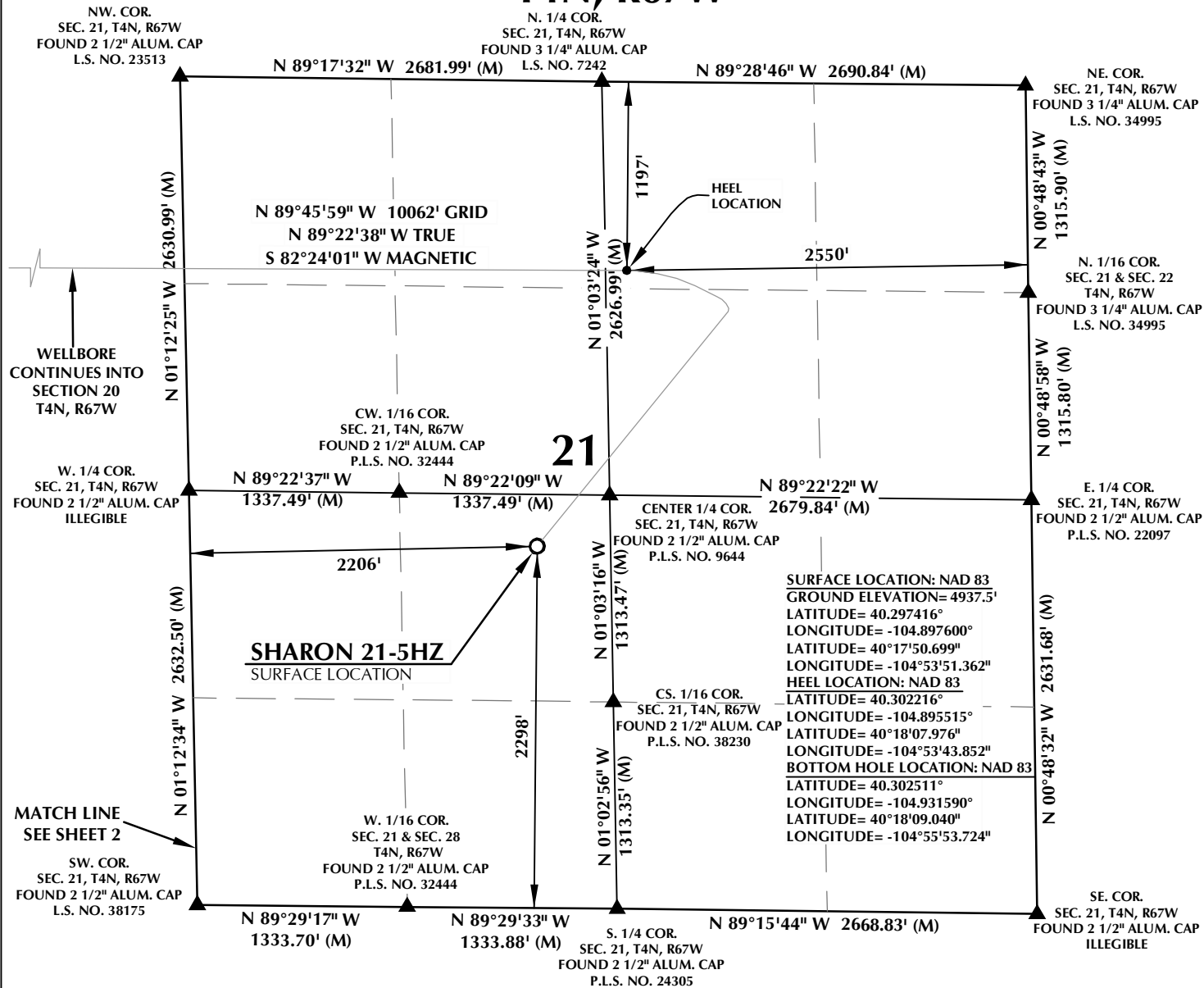


# T4N, R67W

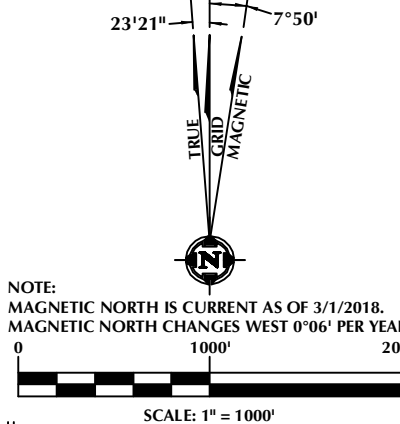


## CERTIFICATE OF SURVEYOR:

THIS IS TO CERTIFY THAT THE ABOVE PLAT WAS PREPARED FROM FIELD NOTES OF ACTUAL SURVEYS MADE BY ME OR UNDER MY SUPERVISION AND THAT THE SAME ARE TRUE AND CORRECT TO THE BEST OF MY KNOWLEDGE AND BELIEF. THIS CERTIFICATE DOES NOT REPRESENT A LAND SURVEY PLAT OR IMPROVEMENT SURVEY PLAT AS DEFINED BY C.R.S. 38-5-102 AND CANNOT BE RELIED UPON TO DETERMINE OWNERSHIP.

*Randall K. French*  
 RANDALL K. FRENCH  
 PROFESSIONAL LAND SURVEYOR  
 COLORADO REGISTRATION NUMBER 38512  
 3/22/18

**NOTICE:**  
 ACCORDING TO COLORADO STATE LAW YOU MUST COMMENCE LEGAL ACTION BASED UPON ANY DEFECT IN THIS SURVEY WITHIN THREE YEARS AFTER YOU FIRST DISCOVER SUCH DEFECT. IN NO EVENT MAY ANY ACTION BASED UPON ANY DEFECT IN THIS SURVEY BE COMMENCED MORE THAN TEN YEARS FROM THE DATE ON THE CERTIFICATION SHOWN HEREON.



## NOTES:

- ▲ INDICATES SECTION CORNER.
- INDICATES CALCULATED CORNER.
- ELEVATION BASED ON NAVD88 (GEOID12B).
- BASIS OF BEARING DERIVED FROM COLORADO COORDINATE SYSTEM OF 1983 NORTH ZONE.
- ALL MEASURED DISTANCES ARE GRID.  
 COMBINED SCALE FACTOR: .99972673 CALCULATED FROM THE CENTER 1/4 CORNER OF SECTION 20, T4N, R67W.  
 OPERATOR: NICK ROADIFER / PDOP = 1.2.
- SEE ADDENDUM TO WELL LOCATION CERTIFICATE FOR EXISTING IMPROVEMENTS WITHIN 500' OF THE WELL PAD.
- WELL FOOTAGES ARE MEASURED AT RIGHT ANGLES TO THE SECTION LINES.
- THE BOTTOM OF HOLE BEARS N89°45'59"W, 10062' FROM THE HEEL LOCATION.

## WELL PAD - SHARON 11-21HZ

SHARON 21-5HZ  
 WELL LOCATION CERTIFICATE  
 2298' FSL & 2206' FWL NESW (SURFACE)  
 1197' FNL & 2550' FEL NWNE (HEEL)  
 LOCATED IN SECTION 21  
 1351' FNL & 2390' FEL SWNE (BOTTOM)  
 LOCATED IN SECTION 19  
 T4N, R67W, 6TH P.M.  
 WELD COUNTY, COLORADO

**Kerr-McGee Oil &  
 Gas Onshore L.P.**  
 1099 18th Street  
 Denver, Colorado 80202



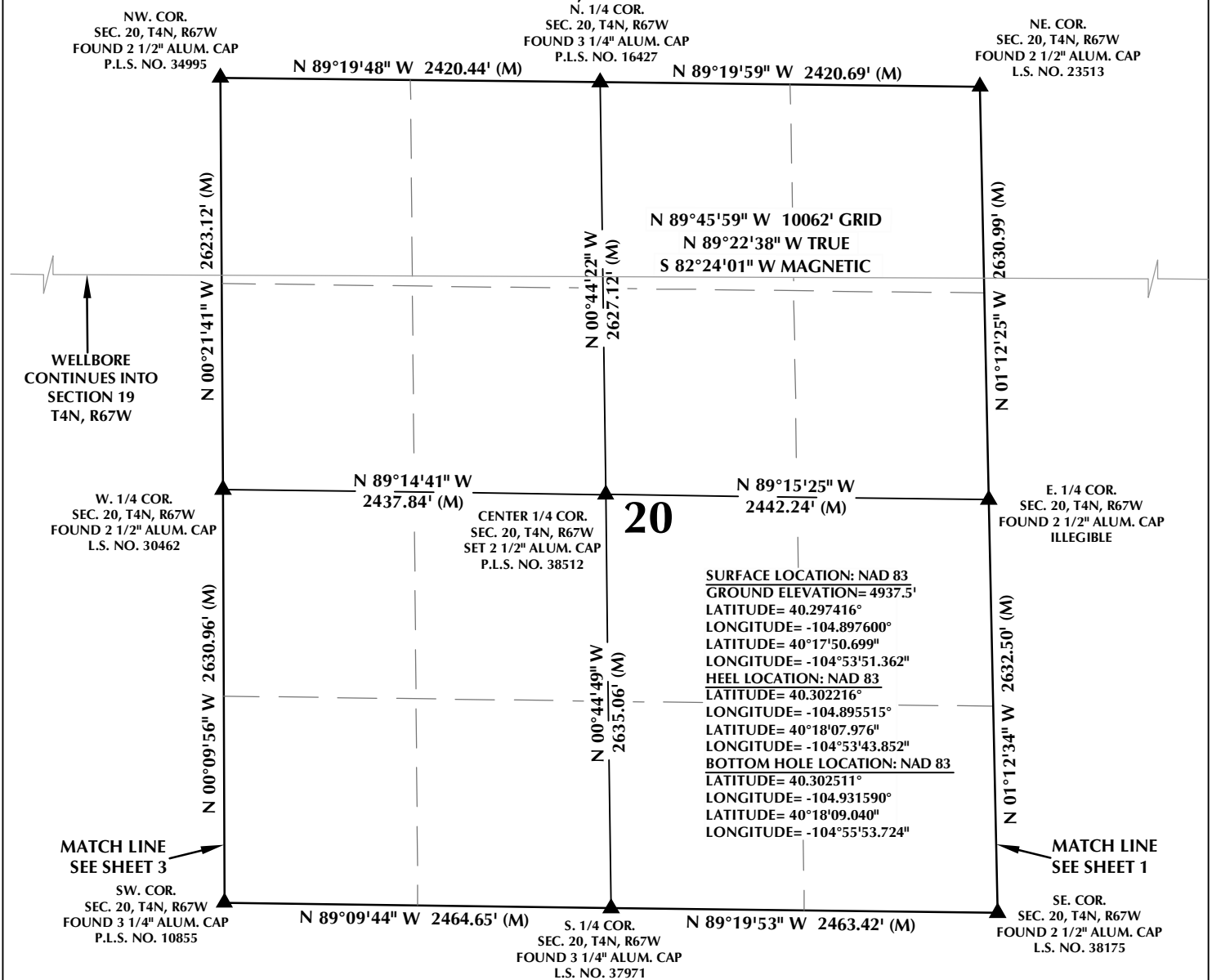
## CONSULTING, LLC

**SHERIDAN OFFICE**  
 1095 Saberton Avenue  
 Sheridan, Wyoming 82801  
 Phone 307-674-0609

**LOVELAND OFFICE**  
 1635 Foxtrail Drive, Suite 204  
 Loveland, Colorado 80538  
 Phone 970-776-4331

DRAFTED BY:	LMO	CHECKED BY:	RKF	SHEET NO:
DATE DRAFTED:	3/22/18	DATE SURVEYED:	3/1/18	1
REVISED:		FILE NAME:	17-235	1 OF 3

# T4N, R67W

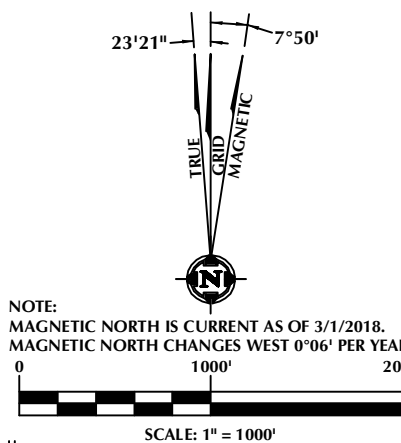


## CERTIFICATE OF SURVEYOR:

THIS IS TO CERTIFY THAT THE ABOVE PLAT WAS PREPARED FROM FIELD NOTES OF ACTUAL SURVEYS MADE BY ME OR UNDER MY SUPERVISION AND THAT THE SAME ARE TRUE AND CORRECT TO THE BEST OF MY KNOWLEDGE AND BELIEF. THIS CERTIFICATE DOES NOT REPRESENT A LAND SURVEY PLAT OR IMPROVEMENT SURVEY PLAT AS DEFINED BY C.R.S. 38-5-102 AND CANNOT BE RELIED UPON TO DETERMINE OWNERSHIP.

*Randall K. French*  
 RANDALL K. FRENCH  
 PROFESSIONAL LAND SURVEYOR  
 COLORADO REGISTRATION NUMBER 38512  
 3/22/18

NOTICE: ACCORDING TO COLORADO STATE LAW YOU MUST COMMENCE A LEGAL ACTION BASED UPON ANY DEFECT IN THIS SURVEY WITHIN THREE YEARS AFTER YOU FIRST DISCOVER SUCH DEFECT. IN NO EVENT MAY ANY ACTION BASED UPON ANY DEFECT IN THIS SURVEY BE COMMENCED MORE THAN TEN YEARS FROM THE DATE ON THE CERTIFICATION SHOWN HEREON.



## NOTES:

- ▲ INDICATES SECTION CORNER.
- INDICATES CALCULATED CORNER.
- ELEVATION BASED ON NAVD88 (GEOID12B).
- BASIS OF BEARING DERIVED FROM COLORADO COORDINATE SYSTEM OF 1983 NORTH ZONE.
- ALL MEASURED DISTANCES ARE GRID.
- COMBINED SCALE FACTOR: .99972673 CALCULATED FROM THE CENTER 1/4 CORNER OF SECTION 20, T4N, R67W.
- OPERATOR: NICK ROADIFER / PDOP = 1.2.
- SEE ADDENDUM TO WELL LOCATION CERTIFICATE FOR EXISTING IMPROVEMENTS WITHIN 500' OF THE WELL PAD.
- WELL FOOTAGES ARE MEASURED AT RIGHT ANGLES TO THE SECTION LINES.
- THE BOTTOM OF HOLE BEARS N89°45'59"W, 10062' FROM THE HEEL LOCATION.

## WELL PAD - SHARON 11-21HZ

SHARON 21-5HZ  
 WELL LOCATION CERTIFICATE  
 2298' FSL & 2206' FWL NESW (SURFACE)  
 1197' FNL & 2550' FEL NWNE (HEEL)  
 LOCATED IN SECTION 21  
 1351' FNL & 2390' FEL SWNE (BOTTOM)  
 LOCATED IN SECTION 19  
 T4N, R67W, 6TH P.M.  
 WELD COUNTY, COLORADO

**Kerr-McGee Oil & Gas Onshore L.P.**  
 1099 18th Street  
 Denver, Colorado 80202



## CONSULTING, LLC

**SHERIDAN OFFICE**  
 1095 Saberton Avenue  
 Sheridan, Wyoming 82801  
 Phone 307-674-0609

**LOVELAND OFFICE**  
 1635 Foxtrail Drive, Suite 204  
 Loveland, Colorado 80538  
 Phone 970-776-4331

DRAFTED BY:	LMO	CHECKED BY:	RKF	SHEET NO:
DATE DRAFTED:	3/22/18	DATE SURVEYED:	3/1/18	2
REVISED:		FILE NAME:	17-235	2 OF 3

# T4N, R67W

N. 1/4 COR.  
SEC. 19, T4N, R67W  
FOUND 3 1/4" ALUM. CAP  
ILLEGIBLE

NW. COR.  
SEC. 19, T4N, R67W  
FOUND 2 1/2" ALUM. CAP  
P.L.S. NO. 34995

NE. COR.  
SEC. 19, T4N, R67W  
FOUND 2 1/2" ALUM. CAP  
P.L.S. NO. 34995

N 00°18'08" W 2648.47' (M)

N 87°53'44" W 2599.88' (M)

N 87°28'31" W 2622.25' (M)

N 00°21'41" W 2623.12' (M)

BOTTOM OF HOLE:  
1351' FNL & 2390' FEL

N 89°45'59" W 10062' GRID  
N 89°22'38" W TRUE  
S 82°24'01" W MAGNETIC

NO. 2

NO. 1

234'

1078'

2390'

N 00°06'33" W 2645.02' (C)

1351'

31'

1290'

W. 1/4 COR.  
SEC. 19, T4N, R67W  
FOUND 2 1/2" ALUM. CAP  
P.L.S. NO. 38065

N 87°57'49" W 2590.83' (C)

N 87°57'49" W 2632.87' (C)

19

E. 1/4 COR.  
SEC. 19, T4N, R67W  
FOUND 2 1/2" ALUM. CAP  
P.L.S. NO. 30462

MATCH LINE  
SEE SHEET 2

N 00°18'22" W 2648.50' (M)

NO. 2

NO. 1

N 00°06'33" W 2639.46' (C)

SURFACE LOCATION: NAD 83  
GROUND ELEVATION= 4937.5'  
LATITUDE= 40.297416°  
LONGITUDE= -104.897600°  
LATITUDE= 40°17'50.699"  
LONGITUDE= -104°53'51.362"  
HEEL LOCATION: NAD 83  
LATITUDE= 40.302216°  
LONGITUDE= -104.895515°  
LATITUDE= 40°18'07.976"  
LONGITUDE= -104°53'43.852"  
BOTTOM HOLE LOCATION: NAD 83  
LATITUDE= 40.302511°  
LONGITUDE= -104.931590°  
LATITUDE= 40°18'09.040"  
LONGITUDE= -104°55'53.724"

SW. COR.  
SEC. 19, T4N, R67W  
FOUND 3 1/4" ALUM. CAP  
P.L.S. NO. 38285

N 88°09'23" W 2581.42' (M)

S. 1/4 COR.  
SEC. 19, T4N, R67W  
FOUND 2 1/2" ALUM. CAP  
P.L.S. NO. 10945

N 88°09'02" W 2635.14' (M)

SE. COR.  
SEC. 19, T4N, R67W  
FOUND 3 1/4" ALUM. CAP  
P.L.S. NO. 10855

23'21" 7°50'



SCALE: 1" = 1000'

## NOTES:

- ▲ INDICATES SECTION CORNER.
- INDICATES CALCULATED CORNER.
- ELEVATION BASED ON NAVD88 (GEOID12B).
- BASIS OF BEARING DERIVED FROM COLORADO COORDINATE SYSTEM OF 1983 NORTH ZONE.
- ALL MEASURED DISTANCES ARE GRID.  
COMBINED SCALE FACTOR: .99972673 CALCULATED FROM THE CENTER 1/4 CORNER OF SECTION 20, T4N, R67W.  
OPERATOR: NICK ROADIFER / DOP = 1.2.
- SEE ADDENDUM TO WELL LOCATION CERTIFICATE FOR EXISTING IMPROVEMENTS WITHIN 500' OF THE WELL PAD.
- WELL FOOTAGES ARE MEASURED AT RIGHT ANGLES TO THE SECTION LINES.
- THE BOTTOM OF HOLE BEARS N89°45'59"W, 10062' FROM THE HEEL LOCATION.
- NO. 1 & NO. 2 AS SHOWN HEREON ARE GOVERNMENT LOTS 1 & 2 PER THE ORIGINAL GLO SURVEY.

## CERTIFICATE OF SURVEYOR:

THIS IS TO CERTIFY THAT THE ABOVE PLAT WAS PREPARED FROM FIELD NOTES OF ACTUAL SURVEYS MADE BY ME OR UNDER MY SUPERVISION AND THAT THE SAME ARE TRUE AND CORRECT TO THE BEST OF MY KNOWLEDGE AND BELIEF. THIS CERTIFICATE DOES NOT REPRESENT A LAND SURVEY PLAT OR IMPROVEMENT SURVEY PLAT AS DEFINED BY C.R.S. 38-5-102 AND CANNOT BE RELIED UPON TO DETERMINE OWNERSHIP.

*Randall K. French*  
38512  
3/22/18  
PROFESSIONAL LAND SURVEYOR

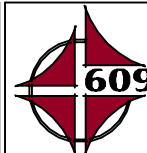
RANDALL K. FRENCH  
PROFESSIONAL LAND SURVEYOR  
COLORADO REGISTRATION NUMBER 38512

NOTICE:  
ACCORDING TO COLORADO STATE LAW YOU MUST COMMENCE A LEGAL ACTION BASED UPON ANY DEFECT IN THIS SURVEY WITHIN THREE YEARS AFTER YOU FIRST DISCOVER SUCH DEFECT. IN NO EVENT MAY ANY ACTION BASED UPON ANY DEFECT IN THIS SURVEY BE COMMENCED MORE THAN TEN YEARS FROM THE DATE ON THE CERTIFICATION SHOWN HEREON.

## WELL PAD - SHARON 11-21HZ

SHARON 21-5HZ  
WELL LOCATION CERTIFICATE  
2298' FSL & 2206' FWL NESW (SURFACE)  
1197' FNL & 2550' FEL NWNE (HEEL)  
LOCATED IN SECTION 21  
1351' FNL & 2390' FEL SWNE (BOTTOM)  
LOCATED IN SECTION 19  
T4N, R67W, 6TH P.M.  
WELD COUNTY, COLORADO

Kerr-McGee Oil &  
Gas Onshore L.P.  
1099 18th Street  
Denver, Colorado 80202



## CONSULTING, LLC

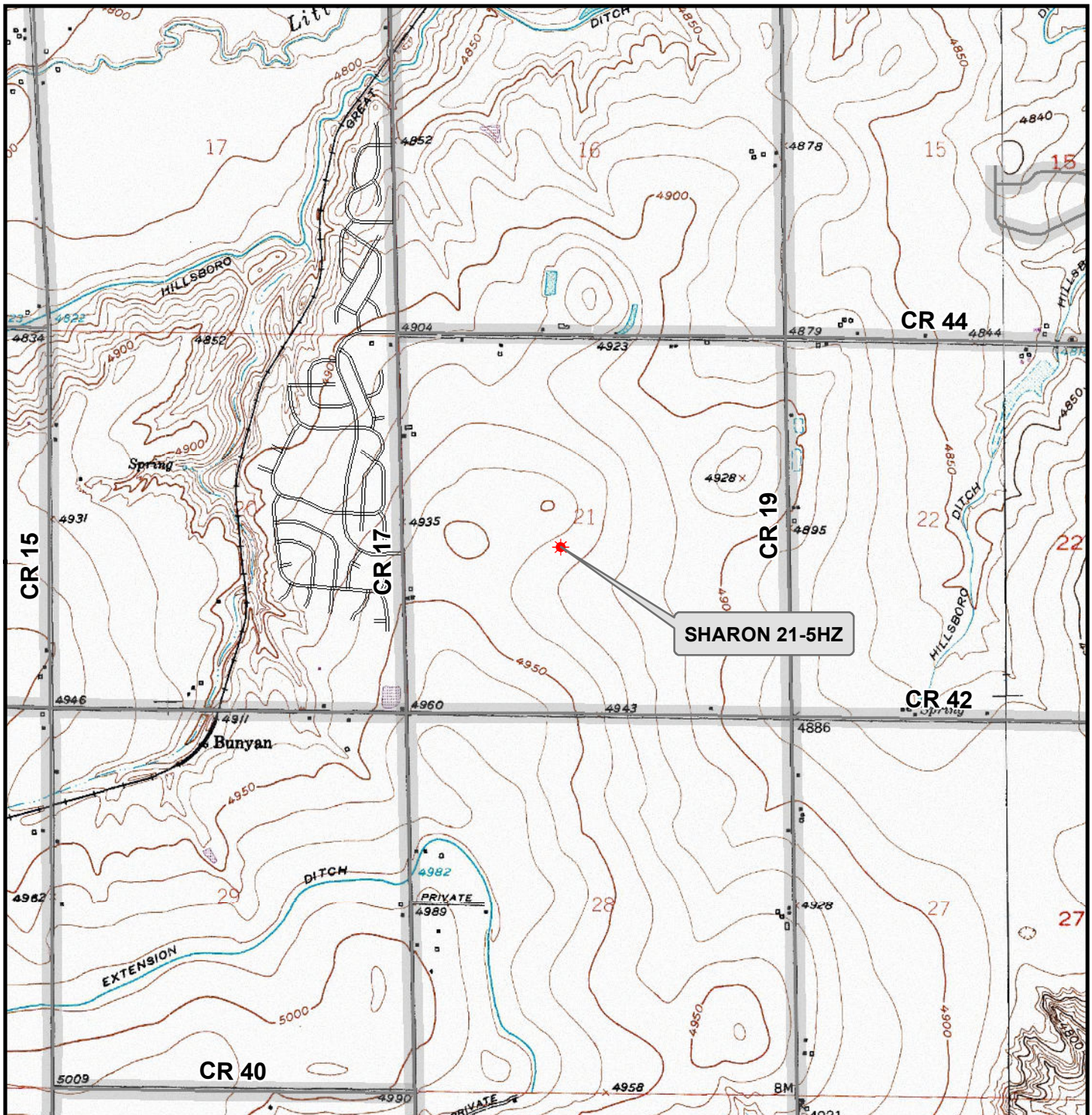
SHERIDAN OFFICE  
1095 Saberton Avenue  
Sheridan, Wyoming 82801  
Phone 307-674-0609

LOVELAND OFFICE  
1635 Foxtrail Drive, Suite 204  
Loveland, Colorado 80538  
Phone 970-776-4331

DRAFTED BY:	LMO	CHECKED BY:	RKF	SHEET NO:
DATE DRAFTED:	3/22/18	DATE SURVEYED:	3/1/18	3
REVISED:		FILE NAME:	17-235	3 OF 3



K:\ANADARKO\2017\2017\_235\_SHARON\_11-21HZ\Sharon 11-21HZ\Sharon 21-5HZ.mxd 3/13/2018 3:57:30 PM



### Legend

- ★ Well - Fee - Proposed    === Road - Primitive - Existing    — Road - County - Existing  
— Road - Improved - Existing    — Road - Highway - Existing

**WELL PAD - SHARON 11-21HZ**  
**GENERAL LOCATION MAP**  
**SHARON 21-5HZ**  
**LOCATED IN SECTION 21**  
**T4N, R67W, 6th P.M.**  
**WELD COUNTY, COLORADO**

**Kerr-McGee Oil &  
Gas Onshore L.P.**  
**1099 18th Street**  
**Denver, Colorado 80202**



### CONSULTING, LLC

**SHERIDAN OFFICE**    **LOVELAND OFFICE**  
1095 Saberton Avenue    1635 Foxtail Drive, Suite 204  
Sheridan, Wyoming 82801    Loveland, Colorado 80538  
Phone 307-674-0609    Phone 970-776-4331

SCALE: 1" = 2,000ft

NAD83 CO-Nft

DRAWN: DP

DATE: 22 Mar 2018

REVISED:

DATE: