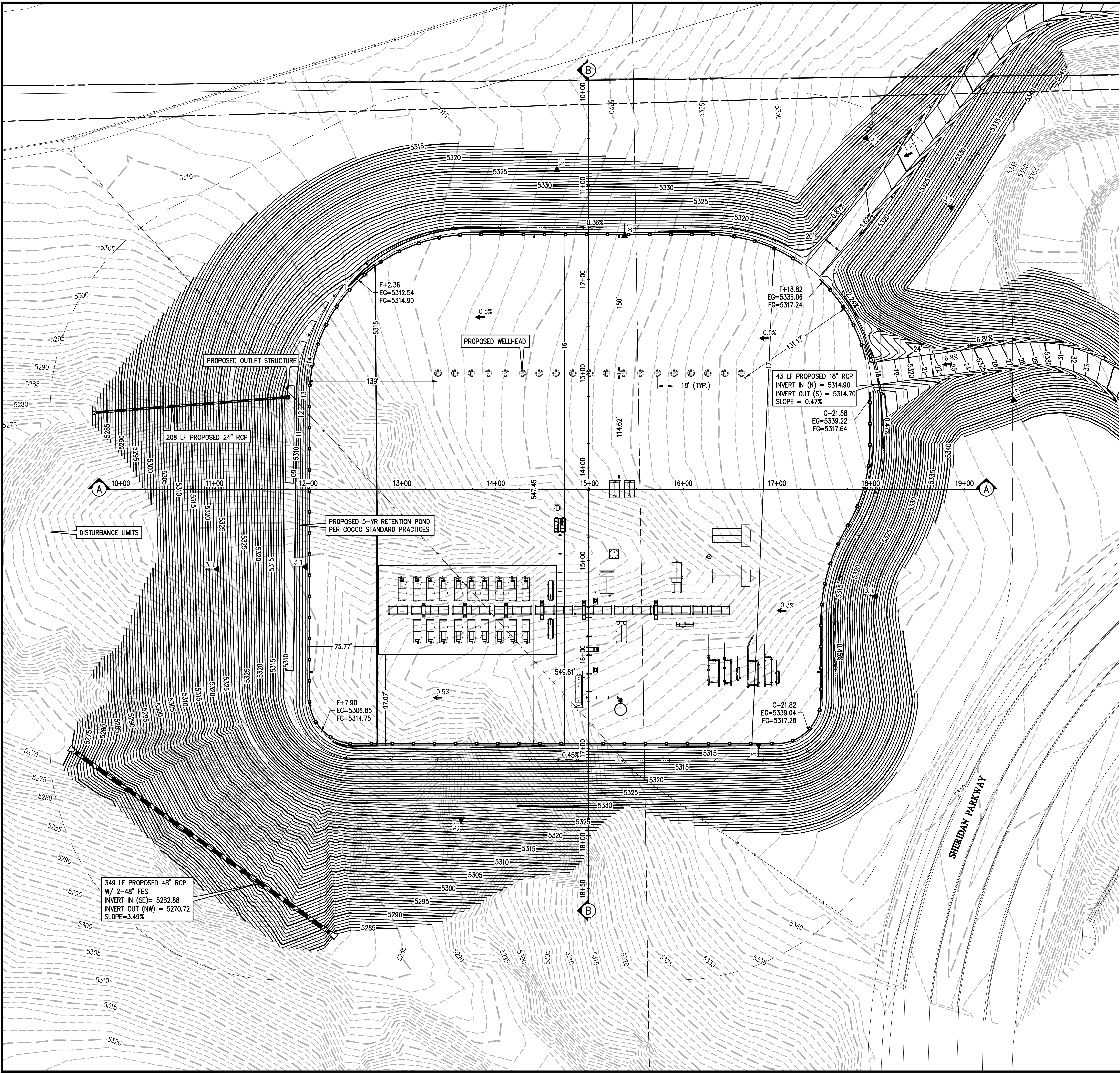


M:\co-15272 Extraction Broomfield-Thornton Gathering Line Feed\Drawings\03-Livingston\Livingston Layout Exhibit.dwg, 5/23/2018 5:59:25 PM, Luke Seebler



LEGEND

EXISTING LINETYPES		PROPOSED LINETYPES		
81		81		MINOR CONTOUR (1' INTERVAL)
81		81		MINOR CONTOUR (1' INTERVAL)
				EDGE OF ASPHALT
				EDGE OF GRAVEL
				SECTION LINE
				ALIQUOT LINE
				CURB AND GUTTER (SPILL/CATCH)
				WIRE FENCE
				DITCH FLOWLINE
EXISTING SYMBOLS	PROPOSED SYMBOLS			
		LIGHT POLE		
		CONTROL POINT		
		FIRE HYDRANT		
		SANITARY MANHOLE		
		STORM DRAIN MANHOLE		
		SIGN		
		EXISTING WELL HEAD		
		PROPOSED WELL HEAD		
		NOMINAL SLOPE		
		PERCENT SLOPE		

DRILLING PAD QUANTITIES

TOTAL CUT FOR WELL PAD	144,017 CY
FILL FOR WELL PAD	131,627 CY
10% FILL FACTOR	13,162 CY
TOTAL FILL	144,789 CY

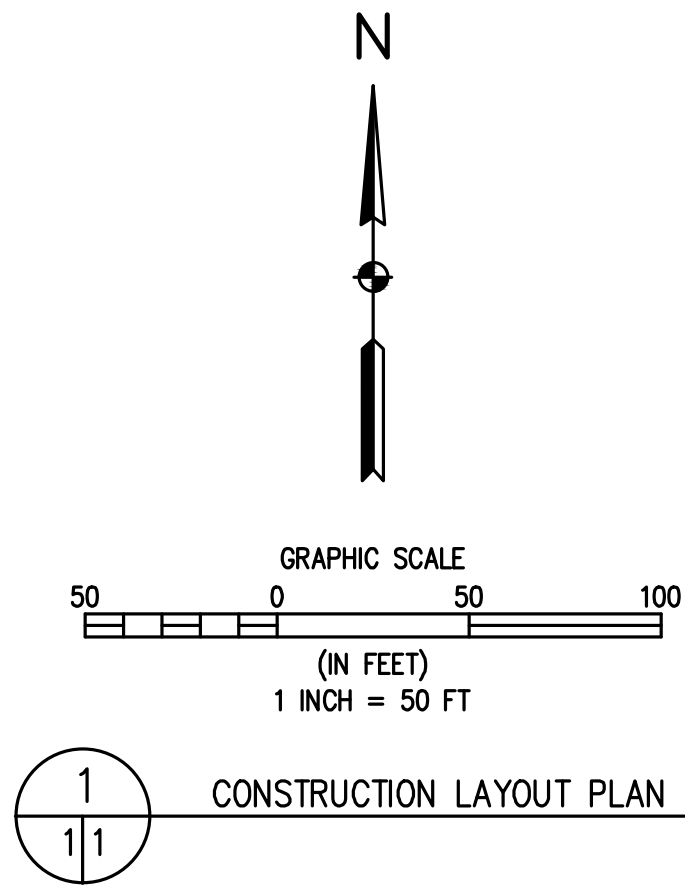
NET DIRTWORK	772 CY (FILL)
TOPSOIL FROM GRADED AREA	8,200 CY
TOTAL DISTURBANCE AREA	17.0 ACRES

PLATING QUANTITIES

NORTHEAST CORNER PLATING ELEVATION	5317.64'
SOUTHEAST CORNER PLATING ELEVATION	5314.63'
TOTAL PLATING AREA	303,200 SQ. FT.
PLATING DEPTH FOR QUANTITIES	6 IN (COMPACTED TO 4")
TOTAL PLATING MATERIAL	5,615 CY

NOTES

1. AREAS DISTURBED BY CONSTRUCTION SHALL BE REVEGETATED ACCORDING TO COGCC REQUIREMENTS.



EXTRACTION OIL & GAS

CITY OF BROOMFIELD
COUNTY OF BROOMFIELD
CONSTRUCTION LAYOUT - LIVINGSTON PAD
SOUTHEAST 1/4 OF SECTION 7, TOWNSHIP 1 SOUTH, RANGE 68 WEST
DRILLING GRADING PLAN

PRELIMINARY
NOT FOR
CONSTRUCTION

FOR AND ON BEHALF OF BASELINE CORPORATION	
INITIAL SUBMITTAL	12/15/2017
DRAWING SIZE	24" x 36"
SURVEY FIRM	SURVEY DATE
BASELINE	11/10/2017
JOB NO.	C015272
DRAWING NAME	Livingston Layout Exhibit.dwg
SHEET	1 OF 2

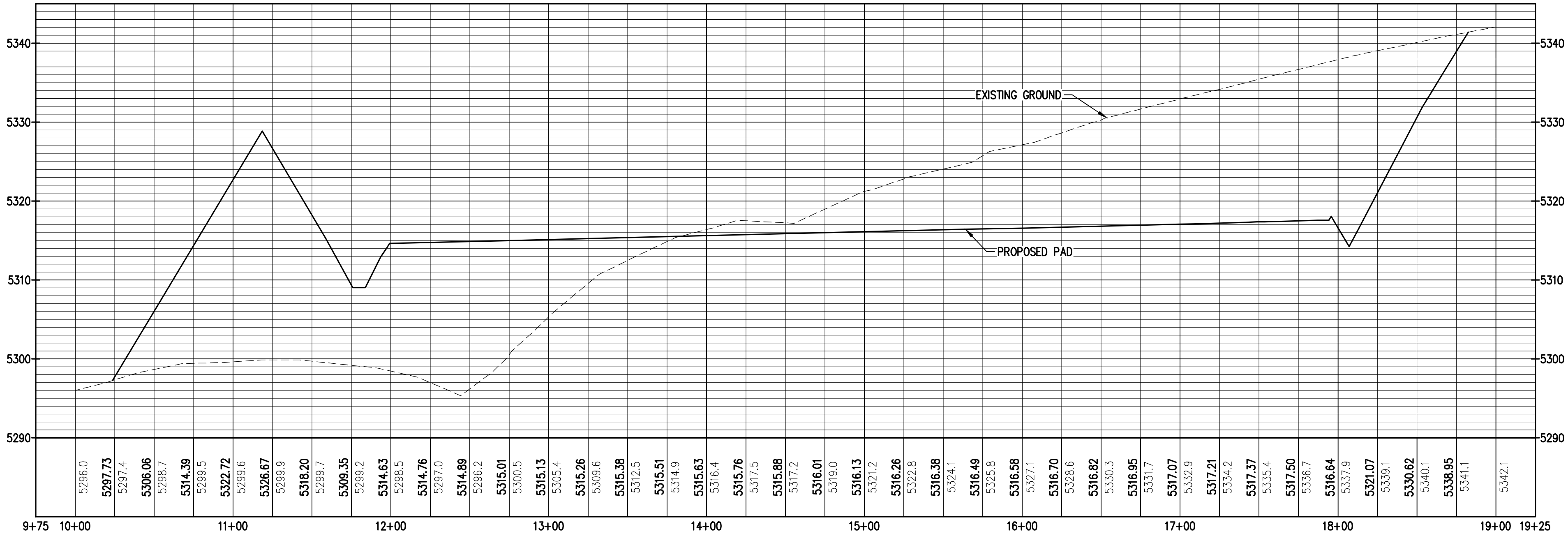
BASELINE
Engineering - Planning - Surveying
4007 S. LINCOLN AVENUE, SUITE 405 • LOVELAND, COLORADO 80537
P. 970.533.7800 • F. 970.533.4864 • WWW.BASELINECORP.COM

DESIGNED BY	LDS
DRAWN BY	LDS
CHECKED BY	AAD

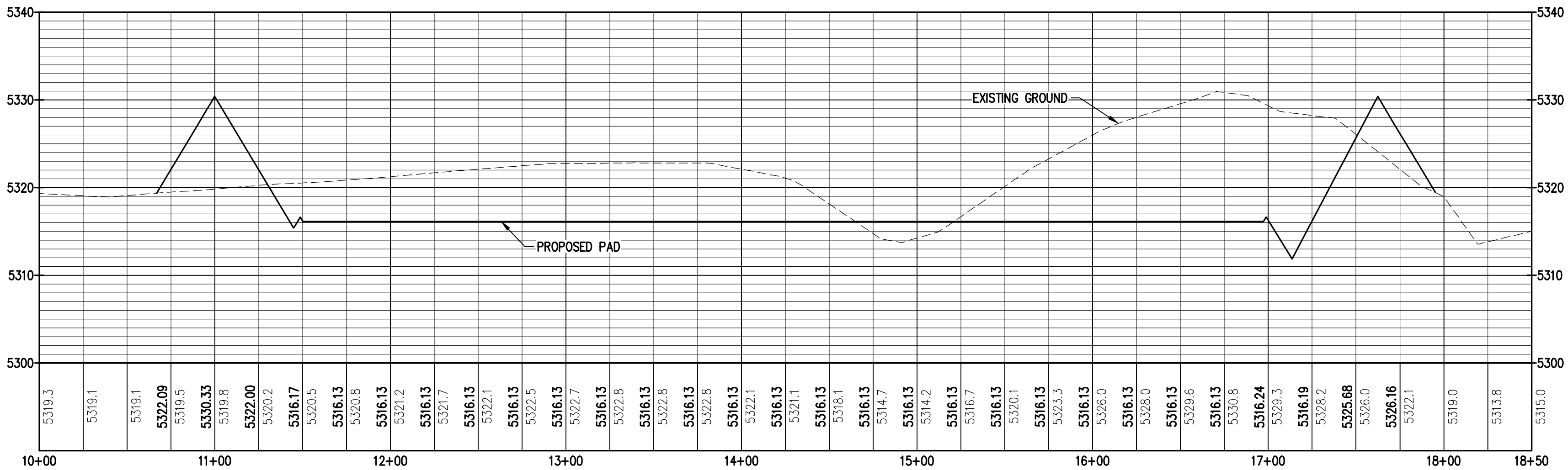
DATE	
PREPARED BY	

REVISION	DESCRIPTION

M:\co-15272 Extraction Broomfield-Thornton Gathering Line Feed\Drawings\03-Livingston\Livingston Layout Exhibit.dwg, 5/23/2018 5:59:30 PM, Luke Seeber



SECTION A-A
EAST-WEST CROSS SECTION



SECTION B-B
NORTH-SOUTH CROSS SECTION

BASELINE

Engineering • Planning • Surveying

4007 S. LINCOLN AVENUE, SUITE 405 • LOVELAND, COLORADO 80537
P. 970.533.7600 • F. 966.679.4864 • www.baselinecorp.com

DESIGNED BY
LDS

DRAWN BY
LDS

CHECKED BY
AAD

REVISION

DESCRIPTION

DATE

PREPARED BY

EXTRACTION OIL & GAS

CITY OF BROOMFIELD

COUNTY OF BROOMFIELD

CONSTRUCTION LAYOUT – LIVINGSTON PAD

SOUTHEAST 1/4 OF SECTION 7, TOWNSHIP 1 SOUTH, RANGE 68 WEST

PAD CROSS SECTIONS

FOR AND ON BEHALF OF
BASELINE CORPORATION

INITIAL SUBMITTAL 12/15/2017

DRAWING SIZE 24" X 36"

SURVEY FIRM BASELINE

SURVEY DATE 11/10/2017

JOB NO. C015272

DRAWING NAME Livingston Layout Exhibit.dwg

SHEET 2 OF 2

PRELIMINARY
NOT FOR
CONSTRUCTION

FOR AND ON BEHALF OF
BASELINE CORPORATION

INITIAL SUBMITTAL 12/15/2017

DRAWING SIZE 24" X 36"

SURVEY FIRM BASELINE

SURVEY DATE 11/10/2017

JOB NO. C015272

DRAWING NAME Livingston Layout Exhibit.dwg

SHEET 2 OF 2

2