

# T2N, R67W

N. 1/4 COR.  
SEC. 35, T2N, R67W  
FOUND 2" ALUM. CAP  
L.S. NO. 25937

NW. COR.  
SEC. 35, T2N, R67W  
FOUND 3 1/4" ALUM. CAP  
P.L.S. NO. 13258

S 89°51'37" W 2635.21' (M)

S 89°50'45" W 2634.67' (M)

NE. COR.  
SEC. 35, T2N, R67W  
FOUND 3 1/4" ALUM. CAP  
L.S. NO. 22098

SURFACE LOCATION: NAD 83  
GROUND ELEVATION= 4932.5'  
LATITUDE= 40.090618°  
LONGITUDE= -104.858919°  
LATITUDE= 40°05'26.224"  
LONGITUDE= -104°51'32.108"  
HEEL LOCATION: NAD 83  
LATITUDE= 40.089433°  
LONGITUDE= -104.857364°  
LATITUDE= 40°05'21.959"  
LONGITUDE= -104°51'26.512"  
BOTTOM HOLE LOCATION: NAD 83  
LATITUDE= 40.089012°  
LONGITUDE= -104.822428°  
LATITUDE= 40°05'20.443"  
LONGITUDE= -104°49'20.741"

MATCH LINE  
SEE SHEET 2

N. 1/16 COR.  
SEC. 35 & SEC. 36  
T2N, R67W  
FOUND 3 1/4" ALUM. CAP  
P.L.S. NO. 23027

E. 1/4 COR.  
SEC. 35, T2N, R67W  
FOUND 2 1/2" ALUM. CAP  
L.S. NO. 34980

S. 1/16 COR.  
SEC. 35 & SEC. 36  
T2N, R67W  
SET 2 1/2" ALUM. CAP  
P.L.S. NO. 38512

WELLBORE  
CONTINUES INTO  
SECTION 36

SE. COR.  
SEC. 35, T2N, R67W  
FOUND 2" ALUM. CAP  
L.S. NO. 25937

S. 1/4 COR.  
SEC. 35, T2N, R67W  
FOUND 2 1/2" ALUM. CAP  
P.L.S. NO. 24307

**BAJA BERG 35-7HZ**  
SURFACE LOCATION

W. 1/4 COR.  
SEC. 35, T2N, R67W  
FOUND 2" ALUM. CAP  
L.S. NO. 25937

S 89°39'54" W

S 89°38'28" W

S 89°39'06" W

1317.75' (M)

1317.28' (M)

2634.36' (M)

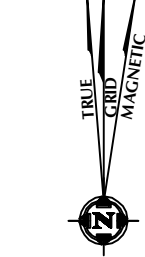
CW. 1/16 COR.

SEC. 35, T2N, R67W

SET 2 1/2" ALUM. CAP

P.L.S. NO. 38512

24°51" 7°47'



N 00°28'39" W 2648.02' (M)

N 00°28'39" W 2648.02' (M)

N 00°28'39" W 2648.02' (M)

N 00°28'39" W 2648.02' (M)

N 00°28'39" W 2648.02' (M)

N 00°28'39" W 2648.02' (M)

N 00°28'39" W 2648.02' (M)

N 00°28'39" W 2648.02' (M)

N 00°28'39" W 2648.02' (M)

N 00°28'39" W 2648.02' (M)

N 00°28'39" W 2648.02' (M)

N 00°28'39" W 2648.02' (M)

N 00°28'39" W 2648.02' (M)

N 00°28'39" W 2648.02' (M)

N 00°28'39" W 2648.02' (M)

N 00°28'39" W 2648.02' (M)

N 00°28'39" W 2648.02' (M)

N 00°28'39" W 2648.02' (M)

N 00°28'39" W 2648.02' (M)

N 00°28'39" W 2648.02' (M)

N 00°28'39" W 2648.02' (M)

N 00°28'39" W 2648.02' (M)

N 00°28'39" W 2648.02' (M)

N 00°28'39" W 2648.02' (M)

N 00°28'39" W 2648.02' (M)

N 00°28'39" W 2648.02' (M)

N 00°28'39" W 2648.02' (M)

N 00°28'39" W 2648.02' (M)

N 00°28'39" W 2648.02' (M)

N 00°28'39" W 2648.02' (M)

N 00°28'39" W 2648.02' (M)

N 00°28'39" W 2648.02' (M)

N 00°28'39" W 2648.02' (M)

N 00°28'39" W 2648.02' (M)

N 00°28'39" W 2648.02' (M)

N 00°28'39" W 2648.02' (M)

N 00°28'39" W 2648.02' (M)

N 00°28'39" W 2648.02' (M)

N 00°28'39" W 2648.02' (M)

N 00°28'39" W 2648.02' (M)

N 00°28'39" W 2648.02' (M)

N 00°28'39" W 2648.02' (M)

N 00°28'39" W 2648.02' (M)

N 00°28'39" W 2648.02' (M)

N 00°28'39" W 2648.02' (M)

## CERTIFICATE OF SURVEYOR:

THIS IS TO CERTIFY THAT THE ABOVE PLAT WAS PREPARED FROM FIELD NOTES OF ACTUAL SURVEYS MADE BY ME OR UNDER MY SUPERVISION AND THAT THE SAME ARE TRUE AND CORRECT TO THE BEST OF MY KNOWLEDGE AND BELIEF. THIS CERTIFICATE DOES NOT REPRESENT A LAND SURVEY PLAT OR IMPROVEMENT SURVEY PLAT AS DEFINED BY C.R.S. 38-5-102 AND CANNOT BE RELIED UPON TO DETERMINE OWNERSHIP.

*Randall K. French*  
2/26/18  
PROFESSIONAL LAND SURVEYOR  
COLORADO REGISTRATION NUMBER 38512

RANDALL K. FRENCH  
PROFESSIONAL LAND SURVEYOR  
COLORADO REGISTRATION NUMBER 38512

NOTICE:  
ACCORDING TO COLORADO STATE LAW YOU MUST COMMENCE LEGAL ACTION BASED UPON ANY DEFECT IN THIS SURVEY WITHIN THREE YEARS AFTER YOU FIRST DISCOVER SUCH DEFECT. IN NO EVENT MAY ANY ACTION BASED UPON ANY DEFECT IN THIS SURVEY BE COMMENCED MORE THAN TEN YEARS FROM THE DATE ON THE CERTIFICATION SHOWN HEREON.

NOTE:  
MAGNETIC NORTH IS CURRENT AS OF 9/25/2017.  
MAGNETIC NORTH CHANGES WEST 0°06' PER YEAR.

SCALE: 1" = 1000'

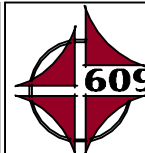
## NOTES:

- ▲ INDICATES SECTION CORNER.
- INDICATES CALCULATED CORNER.
- ELEVATION BASED ON NAVD88 (GEOID12B).
- BASIS OF BEARING DERIVED FROM COLORADO COORDINATE SYSTEM OF 1983 NORTH ZONE.
- ALL MEASURED DISTANCES ARE GRID.
- COMBINED SCALE FACTOR: .99972874 CALCULATED FROM THE E. 1/4 CORNER OF SECTION 35, T2N, R67W.
- OPERATOR: ROB WILSON / PDOP = 1.6.
- SEE ADDENDUM TO WELL LOCATION CERTIFICATE FOR EXISTING IMPROVEMENTS WITHIN 500' OF THE WELL PAD.
- WELL FOOTAGES ARE MEASURED AT RIGHT ANGLES TO THE SECTION LINES.
- THE BOTTOM OF HOLE BEARS S89°31'39"E, 9776' FROM THE HEEL LOCATION.

## WELL PAD - BAJA BERG 14-35HZ

BAJA BERG 35-7HZ  
WELL LOCATION CERTIFICATE  
1132' FSL & 2450' FWL SESW (SURFACE)  
699' FSL & 2385' FEL SWSE (HEEL)  
LOCATED IN SECTION 35  
T2N, R67W, 6TH P.M.  
601' FSL & 2125' FWL LOT 1 (SESW) (BOTTOM)  
LOCATED IN SECTION 31  
T2N, R66W, 6TH P.M.  
WELD COUNTY, COLORADO

**Kerr-McGee Oil &  
Gas Onshore L.P.**  
1099 18th Street  
Denver, Colorado 80202

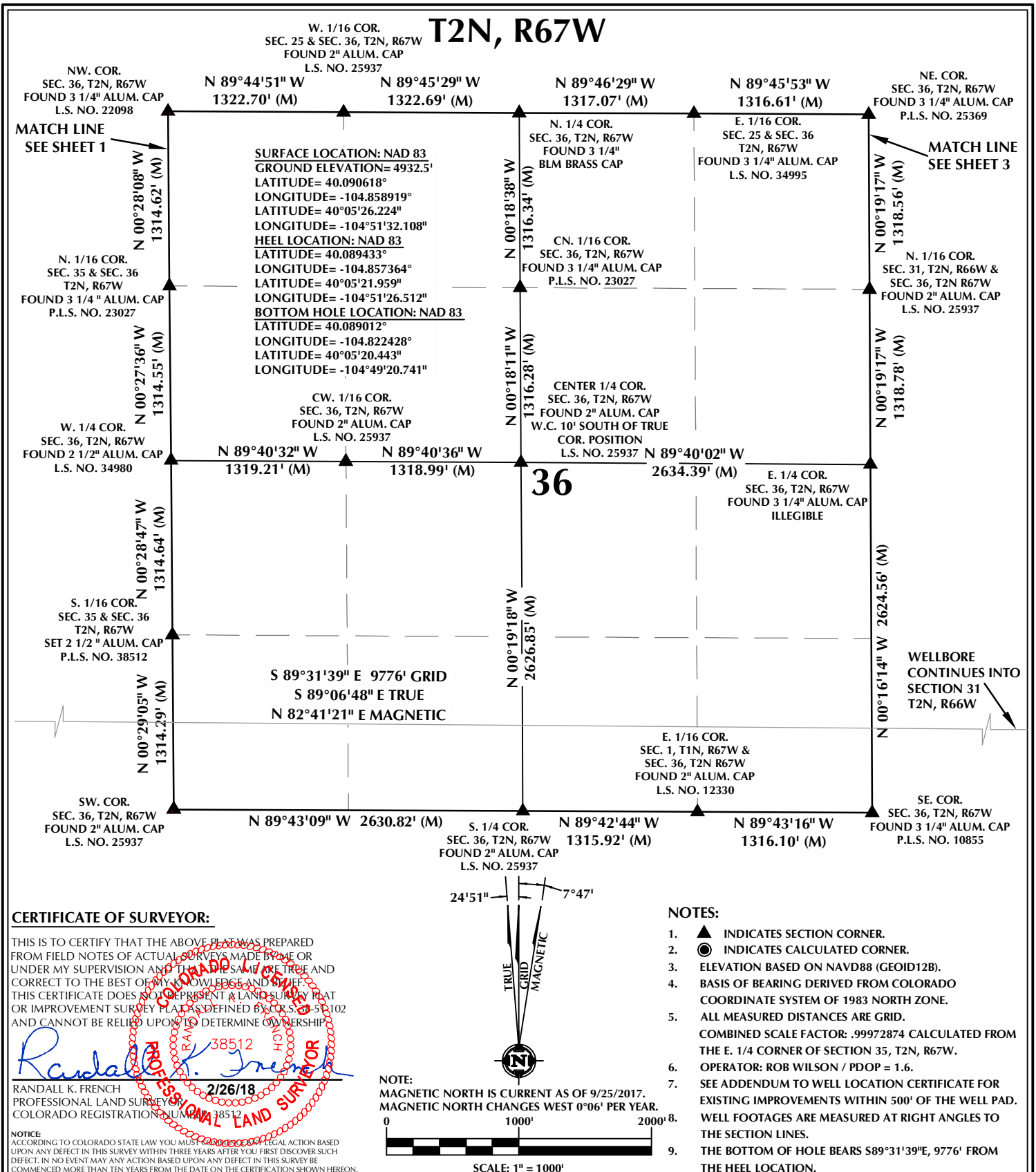


## CONSULTING, LLC

SHERIDAN OFFICE  
1095 Saberton Avenue  
Sheridan, Wyoming 82801  
Phone 307-674-0609

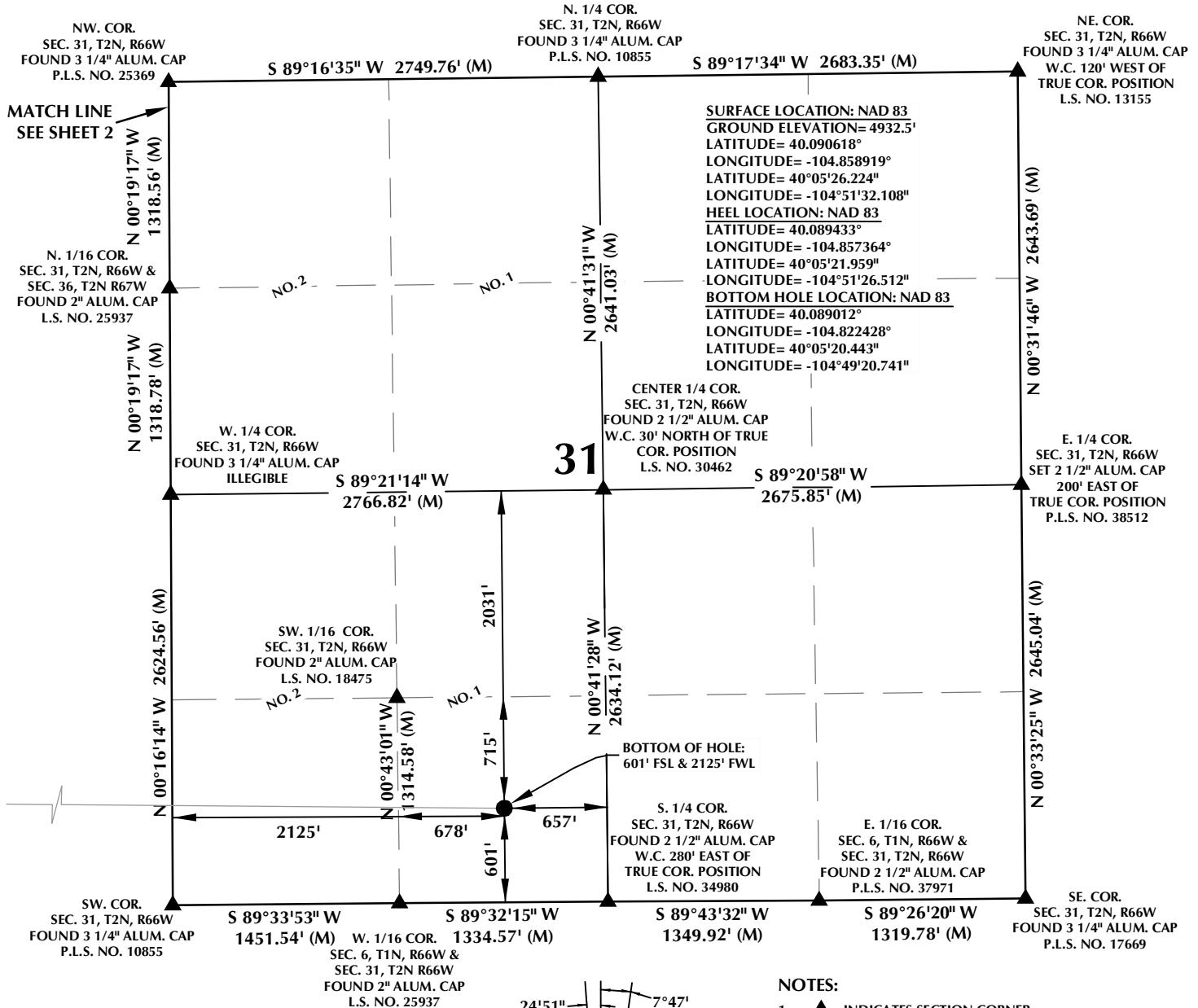
LOVELAND OFFICE  
1635 Foxtrail Drive, Suite 204  
Loveland, Colorado 80538  
Phone 970-776-4331

DRAFTED BY:	LMO	CHECKED BY:	RKF	SHEET NO:
DATE DRAFTED:	2/26/18	DATE SURVEYED:	2/12/18	1
REVISED:		FILE NAME:	16-136	1 OF 3



DRAFTED BY: LMO	CHECKED BY: RKF	SHEET NO: <div style="font-size: 2em; font-weight: bold; text-align: center;">2</div> 2 OF 3
DATE DRAFTED: 2/26/18	DATE SURVEYED: 2/12/18	
REVISED:	FILE NAME: 16-136	

# T2N, R66W

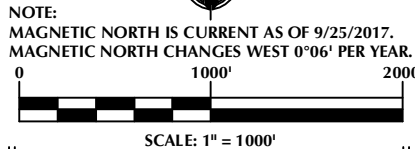


## CERTIFICATE OF SURVEYOR:

THIS IS TO CERTIFY THAT THE ABOVE PLAT WAS PREPARED FROM FIELD NOTES OF ACTUAL SURVEYS MADE BY ME OR UNDER MY SUPERVISION AND THAT THE SAME ARE TRUE AND CORRECT TO THE BEST OF MY KNOWLEDGE AND BELIEF. THIS CERTIFICATE DOES NOT REPRESENT A LAND SURVEY PLAT OR IMPROVEMENT SURVEY PLAT AS DEFINED BY C.R.S. 38-5-102 AND CANNOT BE RELIED UPON TO DETERMINE OWNERSHIP.

*Randall K. French*  
 RANDALL K. FRENCH  
 PROFESSIONAL LAND SURVEYOR  
 COLORADO REGISTRATION NUMBER 38512  
 2/26/18

NOTICE: ACCORDING TO COLORADO STATE LAW YOU MUST COME TO COURT AND TAKE LEGAL ACTION BASED UPON ANY DEFECT IN THIS SURVEY WITHIN THREE YEARS AFTER YOU FIRST DISCOVER SUCH DEFECT. IN NO EVENT MAY ANY ACTION BASED UPON ANY DEFECT IN THIS SURVEY BE COMMENCED MORE THAN TEN YEARS FROM THE DATE ON THE CERTIFICATION SHOWN HEREON.



## NOTES:

- ▲ INDICATES SECTION CORNER.
- INDICATES CALCULATED CORNER.
- ELEVATION BASED ON NAVD88 (GEOID12B).
- BASIS OF BEARING DERIVED FROM COLORADO COORDINATE SYSTEM OF 1983 NORTH ZONE.
- ALL MEASURED DISTANCES ARE GRID.  
COMBINED SCALE FACTOR: .99972874 CALCULATED FROM THE E. 1/4 CORNER OF SECTION 35, T2N, R67W.
- OPERATOR: ROB WILSON / PDOP = 1.6.
- SEE ADDENDUM TO WELL LOCATION CERTIFICATE FOR EXISTING IMPROVEMENTS WITHIN 500' OF THE WELL PAD.
- WELL FOOTAGES ARE MEASURED AT RIGHT ANGLES TO THE SECTION LINES.
- THE BOTTOM OF HOLE BEARS S89°31'39"E, 9776' FROM THE HEEL LOCATION.
- NO. 1 & NO. 2 AS SHOWN HEREON ARE GOVERNMENT LOTS 1 & 2 PER THE ORIGINAL GLO SURVEY.

## WELL PAD - BAJA BERG 14-35HZ

BAJA BERG 35-7HZ  
 WELL LOCATION CERTIFICATE  
 1132' FSL & 2450' FWL SESW (SURFACE)  
 699' FSL & 2385' FEL SWSE (HEEL)  
 LOCATED IN SECTION 35  
 T2N, R67W, 6TH P.M.  
 601' FSL & 2125' FWL LOT 1 (SESW) (BOTTOM)  
 LOCATED IN SECTION 31  
 T2N, R66W, 6TH P.M.  
 WELD COUNTY, COLORADO

**Kerr-McGee Oil &  
 Gas Onshore L.P.**  
 1099 18th Street  
 Denver, Colorado 80202



## CONSULTING, LLC

SHERIDAN OFFICE  
 1095 Saberton Avenue  
 Sheridan, Wyoming 82801  
 Phone 307-674-0609

LOVELAND OFFICE  
 1635 Foxtrail Drive, Suite 204  
 Loveland, Colorado 80538  
 Phone 970-776-4331

DRAFTED BY:	LMO	CHECKED BY:	RKF	SHEET NO:
DATE DRAFTED:	2/26/18	DATE SURVEYED:	2/12/18	3
REVISED:		FILE NAME:	16-136	3 OF 3