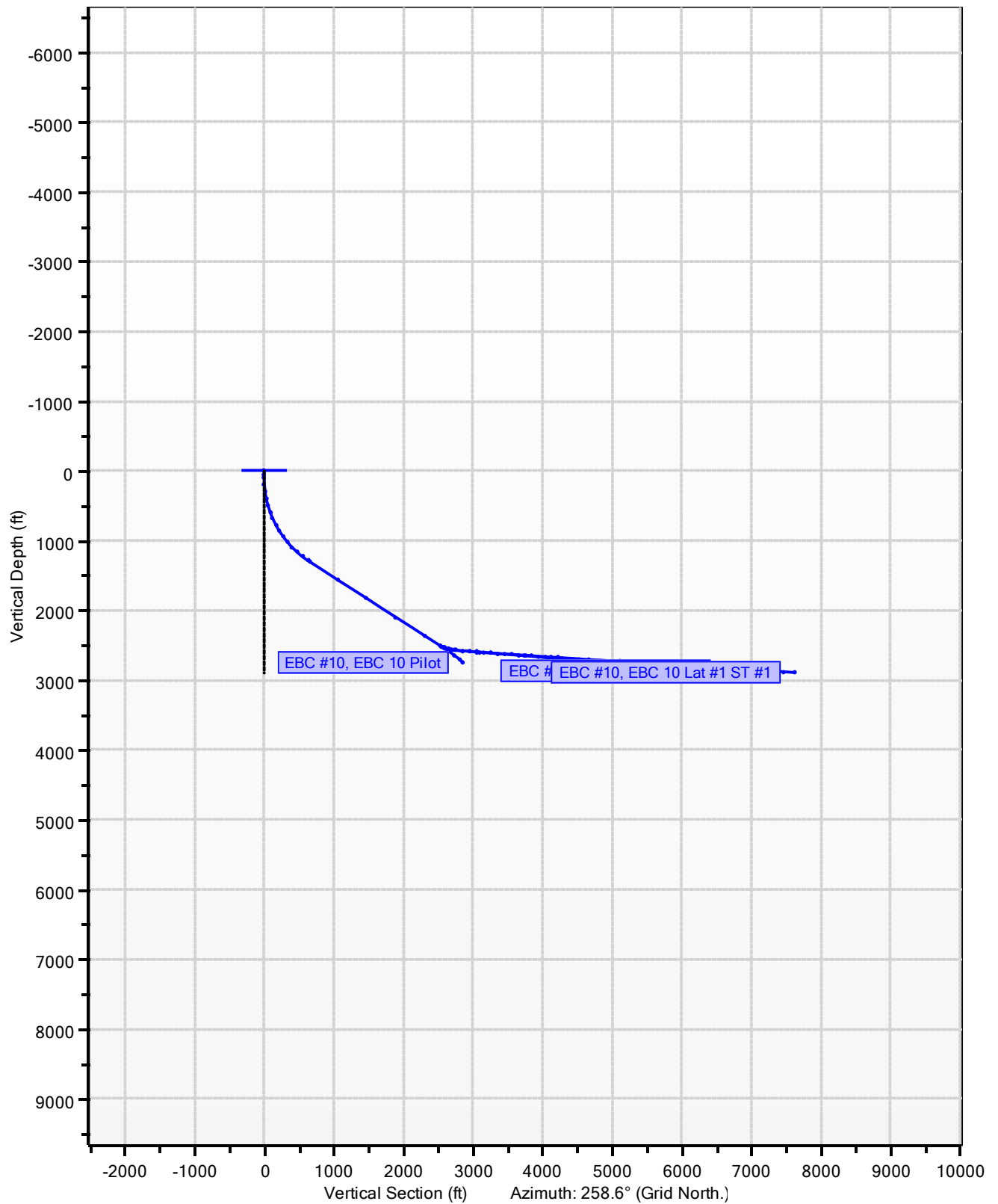


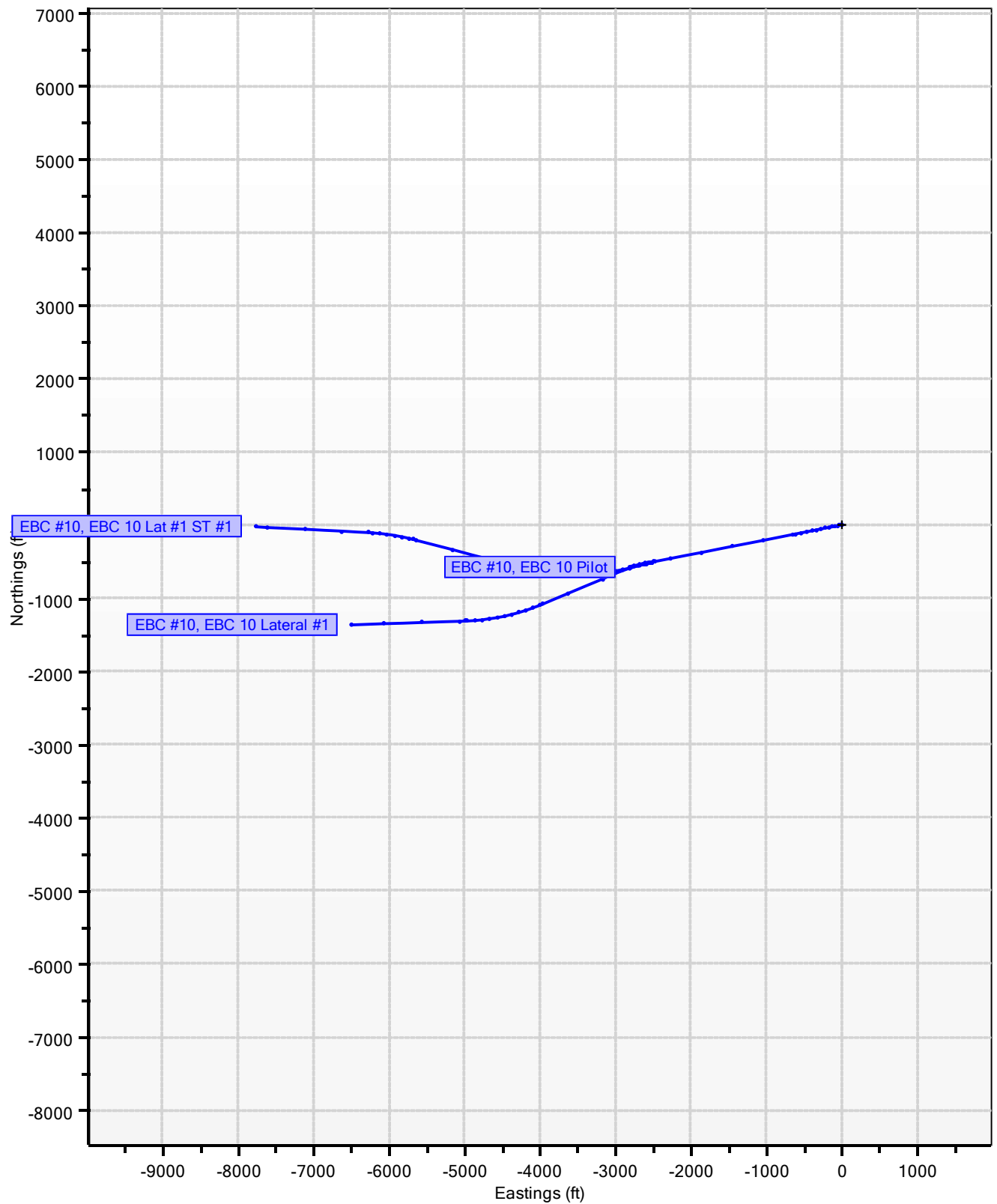
**East Bull Creek Well
EBC Pad 5
EBC #10
EBC 10 Lat #1 ST #1**

Catamount Energy Partners Proposal Report

EBC Pad 5, EBC #10



EBC Pad 5, EBC #10



Catamount Energy Partners

Proposal Report



Database:	San Juan Basin	Local Coordinate Reference:	EBC #10
Company:		TVD Reference:	EBC #10
Project:	East Bull Creek Well	MD Reference:	EBC #10
Site:	EBC Pad 5	North reference:	Grid North
Well:	EBC #10	Survey Calculation Method:	Minimum Curvature
Wellbore:			
Proposal:	EBC 10 Lat #1 ST #1		

Project	East Bull Creek Well		
Map System:	HPGN Colorado State Planes	System Datum:	Mean Sea Level
Geo Datum:	High Precision GPS Network (aka HARN, NAD83/9)		
Map Zone:	Southern Zone		

Site	EBC Pad 5			
Site Position:		Northing:	+1180469	Latitude: 37.14711221° N
From:	Map	Easting:	+2451364	Longitude: 107.38240999° W
Position Uncertainty:	0ft	Slot Radius:	0in	Grid Convergence: -1.2°

Well	EBC #10			
Well Position:	+N/-S	0ft	Northing:	+1180469
	+E/-W	0ft	Easting:	+2451364
Position Uncertainty:		1ft	Wellhead Elevation:	6530ft
			Ground Level:	6514ft

Magnetics	Model Name	Sample Date	Declination (°)	Dip Angle (°)	Field Strength (nT)
	User Defined	2/7/2018	0.0	0.0	0.0

Proposal	EBC 10 Lat #1 ST #1			
Audit Notes:				
Version:		Phase:		Tie On Depth: 4000ft

Vertical Section:	Depth from TVD (ft)	+N/-S (ft)	+E/-W (ft)	Direction (°)
	0	0	0	269.8

Survey Program		3/7/2018			
From (ft)	To (ft)	Survey (Wellbore)	Tool Name	Description	
0	3690	EBC 10 Pilot	MWD	MWD	
3690	4000	EBC 10 Pilot	MWD	MWD	
4000	9155	EBC 10 Lat #1 ST #1	MWD	MWD	

Plan Sections										
Measured Depth (ft)	Inclination (°)	Azimuth (°)	Vertical Depth (ft)	+N/-S (ft)	+E/-W (ft)	Dogleg Rate (°/100ft)	Build Rate (°/100ft)	Turn Rate (°/100ft)	TFO (°)	Target
4000	85.8	253.4	2572	-559	-2705					
5579	86.7	285.0	2679	-580	-4260	2.0	0.1	2.0	89.5	
7054	86.7	285.0	2765	-198	-5682	0.0	0.0	0.0	0.0	
7655	86.6	273.0	2800	-104	-6274	2.0	0.0	-2.0	-90.7	
9155	86.6	273.0	2889	-26	-7769	0.0	0.0	0.0	0.0	Lat 1 ST 1 BHL

Planned Survey											
Measured Depth (ft)	Incl. (°)	Az. (°)	Vertical Depth (ft)	Sub Sea Depth (ft)	+N/-S (ft)	+E/-W (ft)	Vertical Section (ft)	Closure Distance (ft)	Closure Azimuth (°)	Dogleg Rate (°/100ft)	Comments/ Formations
0	0.0	0.0	0	-6530	0	0	0	0	0.0	0.0	MWD
50	0.0	0.0	50	-6480	0	0	0	0	0.0	0.0	
100	0.0	0.0	100	-6430	0	0	0	0	0.0	0.0	
120	0.8	258.6	120	-6410	0	0	0	0	258.6	4.0	
150	2.0	258.6	150	-6380	0	-1	1	1	258.6	4.0	

Catamount Energy Partners

Proposal Report



Database:	San Juan Basin	Local Coordinate Reference:	EBC #10
Company:		TVD Reference:	EBC #10
Project:	East Bull Creek Well	MD Reference:	EBC #10
Site:	EBC Pad 5	North reference:	Grid North
Well:	EBC #10	Survey Calculation Method:	Minimum Curvature
Wellbore:			
Proposal:	EBC 10 Lat #1 ST #1		

Planned Survey											
Measured Depth (ft)	Incl. (°)	Az. (°)	Vertical Depth (ft)	Sub Sea Depth (ft)	+N/-S (ft)	+E/-W (ft)	Vertical Section (ft)	Closure Distance (ft)	Closure Azimuth (°)	Dogleg Rate (°/100ft)	Comments/ Formations
180	3.2	258.6	180	-6350	0	-2	2	2	258.6	4.0	
210	4.4	258.6	210	-6320	-1	-4	4	4	258.6	4.0	
240	5.6	258.6	240	-6290	-1	-7	7	7	258.6	4.0	
270	6.8	258.6	270	-6260	-2	-10	10	10	258.6	4.0	
300	8.0	258.6	299	-6231	-3	-14	14	14	258.6	4.0	
330	9.2	258.6	329	-6201	-4	-18	18	18	258.6	4.0	
360	10.4	258.6	359	-6171	-5	-23	23	24	258.6	4.0	
390	11.6	258.6	388	-6142	-6	-29	29	29	258.6	4.0	
420	12.8	258.6	417	-6113	-7	-35	35	36	258.6	4.0	
450	14.0	258.6	447	-6083	-8	-42	42	43	258.6	4.0	
480	15.2	258.6	476	-6054	-10	-49	49	50	258.6	4.0	
510	16.4	258.6	504	-6026	-12	-57	57	58	258.6	4.0	
540	17.6	258.6	533	-5997	-13	-66	66	67	258.6	4.0	
570	18.8	258.6	562	-5968	-15	-75	75	76	258.6	4.0	
600	20.0	258.6	590	-5940	-17	-85	85	86	258.6	4.0	
630	21.2	258.6	618	-5912	-19	-95	95	97	258.6	4.0	
660	22.4	258.6	646	-5884	-21	-106	106	108	258.6	4.0	
690	23.6	258.6	673	-5857	-24	-117	117	120	258.6	4.0	
720	24.8	258.6	701	-5829	-26	-129	130	132	258.6	4.0	
750	26.0	258.6	728	-5802	-29	-142	142	145	258.6	4.0	
780	27.2	258.6	755	-5775	-31	-155	155	158	258.6	4.0	
810	28.4	258.6	781	-5749	-34	-169	169	172	258.6	4.0	
840	29.6	258.6	808	-5722	-37	-183	183	187	258.6	4.0	
870	30.8	258.6	833	-5697	-40	-198	198	202	258.6	4.0	
900	32.0	258.6	859	-5671	-43	-213	213	218	258.6	4.0	
930	33.2	258.6	884	-5646	-46	-229	229	234	258.6	4.0	
960	34.4	258.6	909	-5621	-50	-246	246	251	258.6	4.0	
990	35.6	258.6	934	-5596	-53	-262	263	268	258.6	4.0	
1020	36.8	258.6	958	-5572	-57	-280	280	285	258.6	4.0	
1050	38.0	258.6	982	-5548	-60	-298	298	304	258.6	4.0	
1080	39.2	258.6	1005	-5525	-64	-316	316	322	258.6	4.0	
1110	40.4	258.6	1028	-5502	-68	-335	335	342	258.6	4.0	
1140	41.6	258.6	1051	-5479	-72	-354	354	361	258.6	4.0	
1170	42.8	258.6	1073	-5457	-76	-374	374	381	258.6	4.0	
1200	44.0	258.6	1095	-5435	-80	-394	394	402	258.6	4.0	
1230	45.2	258.6	1116	-5414	-84	-415	415	423	258.6	4.0	
1260	46.4	258.6	1137	-5393	-88	-436	436	445	258.6	4.0	
1290	47.6	258.6	1158	-5372	-93	-457	458	467	258.6	4.0	
1320	48.8	258.6	1178	-5352	-97	-479	479	489	258.6	4.0	
1350	50.0	258.6	1197	-5333	-102	-501	502	512	258.6	4.0	
1380	51.2	258.6	1216	-5314	-106	-524	525	535	258.6	4.0	
1410	52.4	258.6	1235	-5295	-111	-547	548	558	258.6	4.0	
1440	53.6	258.6	1253	-5277	-116	-571	571	582	258.6	4.0	
1470	54.8	258.6	1270	-5260	-120	-595	595	607	258.6	4.0	
1500	56.0	258.6	1288	-5242	-125	-619	619	631	258.6	4.0	
1530	57.2	258.6	1304	-5226	-130	-643	644	656	258.6	4.0	
1534	57.4	258.6	1306	-5224	-131	-647	647	660	258.6	4.0	
1600	57.4	258.6	1342	-5188	-142	-701	702	715	258.6	0.0	
1700	57.4	258.6	1396	-5134	-159	-784	784	800	258.6	0.0	
1800	57.4	258.6	1450	-5080	-175	-866	867	884	258.6	0.0	

Catamount Energy Partners

Proposal Report



Database:	San Juan Basin	Local Coordinate Reference:	EBC #10
Company:		TVD Reference:	EBC #10
Project:	East Bull Creek Well	MD Reference:	EBC #10
Site:	EBC Pad 5	North reference:	Grid North
Well:	EBC #10	Survey Calculation Method:	Minimum Curvature
Wellbore:			
Proposal:	EBC 10 Lat #1 ST #1		

Planned Survey											
Measured Depth (ft)	Incl. (°)	Az. (°)	Vertical Depth (ft)	Sub Sea Depth (ft)	+N/-S (ft)	+E/-W (ft)	Vertical Section (ft)	Closure Distance (ft)	Closure Azimuth (°)	Dogleg Rate (°/100ft)	Comments/ Formations
1900	57.4	258.6	1504	-5026	-192	-949	949	968	258.6	0.0	
2000	57.4	258.6	1557	-4973	-209	-1031	1032	1052	258.6	0.0	
2100	57.4	258.6	1611	-4919	-225	-1114	1115	1136	258.6	0.0	
2200	57.4	258.6	1665	-4865	-242	-1196	1197	1221	258.6	0.0	
2300	57.4	258.6	1719	-4811	-259	-1279	1280	1305	258.6	0.0	
2400	57.4	258.6	1773	-4757	-276	-1361	1362	1389	258.6	0.0	
2500	57.4	258.6	1827	-4703	-292	-1444	1445	1473	258.6	0.0	
2600	57.4	258.6	1881	-4649	-309	-1527	1528	1558	258.6	0.0	
2700	57.4	258.6	1935	-4595	-326	-1609	1610	1642	258.6	0.0	
2800	57.4	258.6	1989	-4541	-342	-1692	1693	1726	258.6	0.0	
2900	57.4	258.6	2043	-4487	-359	-1774	1775	1810	258.6	0.0	
3000	57.4	258.6	2097	-4433	-376	-1857	1858	1894	258.6	0.0	
3100	57.4	258.6	2151	-4379	-393	-1939	1941	1979	258.6	0.0	
3200	57.4	258.6	2205	-4325	-409	-2022	2023	2063	258.6	0.0	
3300	57.4	258.6	2259	-4271	-426	-2104	2106	2147	258.6	0.0	
3400	57.4	258.6	2312	-4218	-443	-2187	2188	2231	258.6	0.0	
3500	57.4	258.6	2366	-4164	-459	-2269	2271	2315	258.6	0.0	
3600	57.4	258.6	2420	-4110	-476	-2352	2354	2400	258.6	0.0	
3690	57.4	258.6	2469	-4061	-491	-2426	2428	2475	258.6	0.0	MWD
3700	57.4	258.6	2474	-4056	-493	-2435	2436	2484	258.6	0.0	
3750	57.4	258.6	2501	-4029	-501	-2476	2477	2526	258.6	0.0	
3780	61.2	257.8	2516	-4014	-506	-2501	2503	2552	258.6	13.1	
3810	65.1	257.1	2530	-4000	-512	-2527	2529	2579	258.5	13.1	
3840	69.0	256.5	2542	-3988	-519	-2554	2556	2606	258.5	13.1	
3870	72.9	255.9	2552	-3978	-525	-2582	2583	2634	258.5	13.1	
3900	76.7	255.3	2559	-3971	-533	-2610	2611	2663	258.5	13.1	
3930	80.6	254.7	2565	-3965	-540	-2638	2640	2693	258.4	13.1	
3960	84.5	254.2	2569	-3961	-548	-2667	2669	2722	258.4	13.1	
3970	85.8	254.0	2570	-3960	-551	-2676	2678	2732	258.4	13.1	
3990	85.8	253.6	2571	-3959	-556	-2695	2697	2752	258.3	2.0	
4000	85.8	253.4	2572	-3958	-559	-2705	2707	2762	258.3	2.0	KOP MWD
4020	85.8	253.8	2574	-3956	-565	-2724	2726	2782	258.3	2.0	
4050	85.8	254.4	2576	-3954	-573	-2753	2755	2812	258.2	2.0	
4080	85.8	255.0	2578	-3952	-581	-2782	2784	2842	258.2	2.0	
4110	85.8	255.6	2580	-3950	-589	-2811	2813	2872	258.2	2.0	
4140	85.8	256.2	2582	-3948	-596	-2840	2842	2902	258.1	2.0	
4170	85.8	256.8	2585	-3945	-603	-2869	2871	2931	258.1	2.0	
4200	85.8	257.4	2587	-3943	-609	-2898	2900	2961	258.1	2.0	
4230	85.8	258.0	2589	-3941	-616	-2927	2929	2991	258.1	2.0	
4260	85.8	258.6	2591	-3939	-622	-2957	2959	3021	258.1	2.0	
4290	85.8	259.2	2593	-3937	-628	-2986	2988	3051	258.1	2.0	
4320	85.9	259.8	2596	-3934	-633	-3015	3017	3081	258.1	2.0	
4350	85.9	260.4	2598	-3932	-638	-3045	3047	3111	258.2	2.0	
4380	85.9	261.0	2600	-3930	-643	-3074	3076	3141	258.2	2.0	
4410	85.9	261.6	2602	-3928	-648	-3104	3106	3171	258.2	2.0	
4440	85.9	262.2	2604	-3926	-652	-3133	3136	3201	258.2	2.0	
4470	85.9	262.8	2606	-3924	-656	-3163	3165	3230	258.3	2.0	
4500	85.9	263.4	2608	-3922	-659	-3193	3195	3260	258.3	2.0	
4530	85.9	264.0	2611	-3919	-663	-3223	3225	3290	258.4	2.0	
4560	86.0	264.6	2613	-3917	-666	-3252	3255	3320	258.4	2.0	

Catamount Energy Partners

Proposal Report



Database:	San Juan Basin	Local Coordinate Reference:	EBC #10
Company:		TVD Reference:	EBC #10
Project:	East Bull Creek Well	MD Reference:	EBC #10
Site:	EBC Pad 5	North reference:	Grid North
Well:	EBC #10	Survey Calculation Method:	Minimum Curvature
Wellbore:			
Proposal:	EBC 10 Lat #1 ST #1		

Planned Survey											
Measured Depth (ft)	Incl. (°)	Az. (°)	Vertical Depth (ft)	Sub Sea Depth (ft)	+N/-S (ft)	+E/-W (ft)	Vertical Section (ft)	Closure Distance (ft)	Closure Azimuth (°)	Dogleg Rate (°/100ft)	Comments/ Formations
4590	86.0	265.2	2615	-3915	-668	-3282	3284	3350	258.5	2.0	
4620	86.0	265.8	2617	-3913	-670	-3312	3314	3379	258.6	2.0	
4650	86.0	266.4	2619	-3911	-673	-3342	3344	3409	258.6	2.0	
4680	86.0	267.0	2621	-3909	-674	-3372	3374	3439	258.7	2.0	
4710	86.0	267.6	2623	-3907	-676	-3402	3404	3468	258.8	2.0	
4740	86.0	268.2	2625	-3905	-677	-3432	3434	3498	258.8	2.0	
4770	86.1	268.8	2627	-3903	-677	-3462	3464	3527	258.9	2.0	
4800	86.1	269.4	2629	-3901	-678	-3491	3494	3557	259.0	2.0	
4830	86.1	270.0	2631	-3899	-678	-3521	3524	3586	259.1	2.0	
4860	86.1	270.6	2633	-3897	-678	-3551	3554	3615	259.2	2.0	
4890	86.1	271.2	2636	-3894	-677	-3581	3583	3645	259.3	2.0	
4920	86.2	271.8	2638	-3892	-677	-3611	3613	3674	259.4	2.0	
4950	86.2	272.4	2640	-3890	-675	-3641	3643	3703	259.5	2.0	
4980	86.2	273.0	2642	-3888	-674	-3671	3673	3732	259.6	2.0	
5010	86.2	273.6	2644	-3886	-672	-3701	3703	3761	259.7	2.0	
5040	86.2	274.2	2645	-3885	-670	-3731	3733	3790	259.8	2.0	
5070	86.3	274.8	2647	-3883	-668	-3761	3763	3819	259.9	2.0	
5100	86.3	275.4	2649	-3881	-665	-3790	3793	3848	260.0	2.0	
5130	86.3	276.0	2651	-3879	-662	-3820	3822	3877	260.2	2.0	
5160	86.3	276.6	2653	-3877	-659	-3850	3852	3906	260.3	2.0	
5190	86.3	277.2	2655	-3875	-655	-3880	3882	3935	260.4	2.0	
5220	86.4	277.9	2657	-3873	-651	-3909	3911	3963	260.5	2.0	
5250	86.4	278.5	2659	-3871	-647	-3939	3941	3992	260.7	2.0	
5280	86.4	279.1	2661	-3869	-642	-3969	3971	4020	260.8	2.0	
5310	86.4	279.7	2663	-3867	-638	-3998	4000	4049	260.9	2.0	
5340	86.5	280.3	2665	-3865	-632	-4028	4030	4077	261.1	2.0	
5370	86.5	280.9	2666	-3864	-627	-4057	4059	4105	261.2	2.0	
5400	86.5	281.5	2668	-3862	-621	-4086	4088	4133	261.4	2.0	
5430	86.5	282.1	2670	-3860	-615	-4116	4118	4161	261.5	2.0	
5460	86.6	282.7	2672	-3858	-609	-4145	4147	4189	261.6	2.0	
5490	86.6	283.3	2674	-3856	-602	-4174	4176	4217	261.8	2.0	
5520	86.6	283.9	2676	-3854	-595	-4203	4205	4245	261.9	2.0	
5550	86.6	284.5	2677	-3853	-588	-4232	4234	4273	262.1	2.0	
5579	86.7	285.0	2679	-3851	-580	-4260	4262	4300	262.2	2.0	
5600	86.7	285.0	2680	-3850	-575	-4281	4282	4319	262.4	0.0	
5700	86.7	285.0	2686	-3844	-549	-4377	4379	4411	262.9	0.0	
5800	86.7	285.0	2692	-3838	-523	-4473	4475	4504	263.3	0.0	
5900	86.7	285.0	2698	-3832	-497	-4570	4571	4597	263.8	0.0	
6000	86.7	285.0	2703	-3827	-471	-4666	4668	4690	264.2	0.0	
6100	86.7	285.0	2709	-3821	-445	-4763	4764	4783	264.7	0.0	
6200	86.7	285.0	2715	-3815	-419	-4859	4860	4877	265.1	0.0	
6300	86.7	285.0	2721	-3809	-394	-4955	4957	4971	265.5	0.0	
6400	86.7	285.0	2727	-3803	-368	-5052	5053	5065	265.8	0.0	
6500	86.7	285.0	2732	-3798	-342	-5148	5149	5160	266.2	0.0	
6600	86.7	285.0	2738	-3792	-316	-5245	5246	5254	266.6	0.0	
6700	86.7	285.0	2744	-3786	-290	-5341	5342	5349	266.9	0.0	
6800	86.7	285.0	2750	-3780	-264	-5437	5438	5444	267.2	0.0	
6900	86.7	285.0	2756	-3774	-238	-5534	5535	5539	267.5	0.0	
7000	86.7	285.0	2762	-3768	-212	-5630	5631	5634	267.8	0.0	
7054	86.7	285.0	2765	-3765	-198	-5682	5683	5686	268.0	0.0	

Catamount Energy Partners

Proposal Report



Database:	San Juan Basin	Local Coordinate Reference:	EBC #10
Company:		TVD Reference:	EBC #10
Project:	East Bull Creek Well	MD Reference:	EBC #10
Site:	EBC Pad 5	North reference:	Grid North
Well:	EBC #10	Survey Calculation Method:	Minimum Curvature
Wellbore:			
Proposal:	EBC 10 Lat #1 ST #1		

Planned Survey											
Measured Depth (ft)	Incl. (°)	Az. (°)	Vertical Depth (ft)	Sub Sea Depth (ft)	+N/-S (ft)	+E/-W (ft)	Vertical Section (ft)	Closure Distance (ft)	Closure Azimuth (°)	Dogleg Rate (°/100ft)	Comments/ Formations
7080	86.7	284.5	2766	-3764	-192	-5707	5708	5711	268.1	2.0	
7110	86.7	283.9	2768	-3762	-184	-5736	5737	5739	268.2	2.0	
7140	86.7	283.3	2770	-3760	-177	-5766	5766	5768	268.2	2.0	
7170	86.6	282.7	2771	-3759	-170	-5795	5795	5797	268.3	2.0	
7200	86.6	282.1	2773	-3757	-164	-5824	5825	5826	268.4	2.0	
7230	86.6	281.5	2775	-3755	-158	-5853	5854	5855	268.5	2.0	
7260	86.6	280.9	2777	-3753	-152	-5883	5883	5885	268.5	2.0	
7290	86.6	280.3	2778	-3752	-147	-5912	5913	5914	268.6	2.0	
7320	86.6	279.7	2780	-3750	-141	-5942	5942	5943	268.6	2.0	
7350	86.6	279.1	2782	-3748	-136	-5971	5972	5973	268.7	2.0	
7380	86.6	278.5	2784	-3746	-132	-6001	6001	6002	268.7	2.0	
7410	86.6	277.9	2786	-3744	-128	-6030	6031	6032	268.8	2.0	
7440	86.6	277.3	2787	-3743	-124	-6060	6060	6061	268.8	2.0	
7470	86.6	276.7	2789	-3741	-120	-6090	6090	6091	268.9	2.0	
7500	86.6	276.1	2791	-3739	-117	-6120	6120	6121	268.9	2.0	
7530	86.6	275.5	2793	-3737	-114	-6149	6150	6150	268.9	2.0	
7560	86.6	274.9	2794	-3736	-111	-6179	6180	6180	269.0	2.0	
7590	86.6	274.3	2796	-3734	-108	-6209	6209	6210	269.0	2.0	
7620	86.6	273.7	2798	-3732	-106	-6239	6239	6240	269.0	2.0	
7650	86.6	273.1	2800	-3730	-105	-6269	6269	6270	269.0	2.0	
7655	86.6	273.0	2800	-3730	-104	-6274	6274	6275	269.0	2.0	
7700	86.6	273.0	2803	-3727	-102	-6319	6319	6319	269.1	0.0	
7800	86.6	273.0	2809	-3721	-97	-6418	6419	6419	269.1	0.0	
7900	86.6	273.0	2815	-3715	-92	-6518	6518	6519	269.2	0.0	
8000	86.6	273.0	2821	-3709	-86	-6618	6618	6618	269.3	0.0	
8100	86.6	273.0	2826	-3704	-81	-6717	6718	6718	269.3	0.0	
8200	86.6	273.0	2832	-3698	-76	-6817	6817	6818	269.4	0.0	
8300	86.6	273.0	2838	-3692	-71	-6917	6917	6917	269.4	0.0	
8400	86.6	273.0	2844	-3686	-65	-7016	7017	7017	269.5	0.0	
8500	86.6	273.0	2850	-3680	-60	-7116	7116	7116	269.5	0.0	
8600	86.6	273.0	2856	-3674	-55	-7216	7216	7216	269.6	0.0	
8700	86.6	273.0	2862	-3668	-50	-7316	7316	7316	269.6	0.0	
8800	86.6	273.0	2868	-3662	-45	-7415	7415	7415	269.7	0.0	
8900	86.6	273.0	2874	-3656	-39	-7515	7515	7515	269.7	0.0	
9000	86.6	273.0	2880	-3650	-34	-7615	7615	7615	269.7	0.0	
9100	86.6	273.0	2886	-3644	-29	-7714	7714	7714	269.8	0.0	
9155	86.6	273.0	2889	-3641	-26	-7769	7769	7769	269.8	0.0	Lat 1 ST 1 BHL

Targets									
Target Name	Dip Angle (°)	Dip Dir. (°)	TVD (ft)	+N/-S (ft)	+E/-W (ft)	Northing (ft)	Easting (ft)	Latitude	Longitude
-hit/miss target									
-Shape									
Lat 1 ST 1 BHL			2889	-26	-7769	+1180443	+2443595	37.14660782° N	107.40905680° W
- proposal hits the target center									
- Point									

Catamount Energy Partners

Proposal Report



Database:	San Juan Basin	Local Coordinate Reference:	EBC #10
Company:		TVD Reference:	EBC #10
Project:	East Bull Creek Well	MD Reference:	EBC #10
Site:	EBC Pad 5	North reference:	Grid North
Well:	EBC #10	Survey Calculation Method:	Minimum Curvature
Wellbore:			
Proposal:	EBC 10 Lat #1 ST #1		

Proposal Annotations				
Measured Depth (ft)	Vertical Depth (ft)	+N/-S (ft)	+E/-W (ft)	Comment
4000	2572	-559	-2705	KOP

Checked By:	Approved By:	Date:
-------------	--------------	-------

Disclaimer Notice
Catamount Energy Partners makes no warranty of any kind with respect to the subject matter included herein or the completeness or accuracy of this document.
Catamount Energy Partners are not responsible for any actions (or lack thereof) taken as a result of relying on or in any way using information contained in this document and in no event shall be liable for any damages resulting from reliance on or use of this information.