


SURFACE LOCATION: 2206' FSL & 1867' FWL

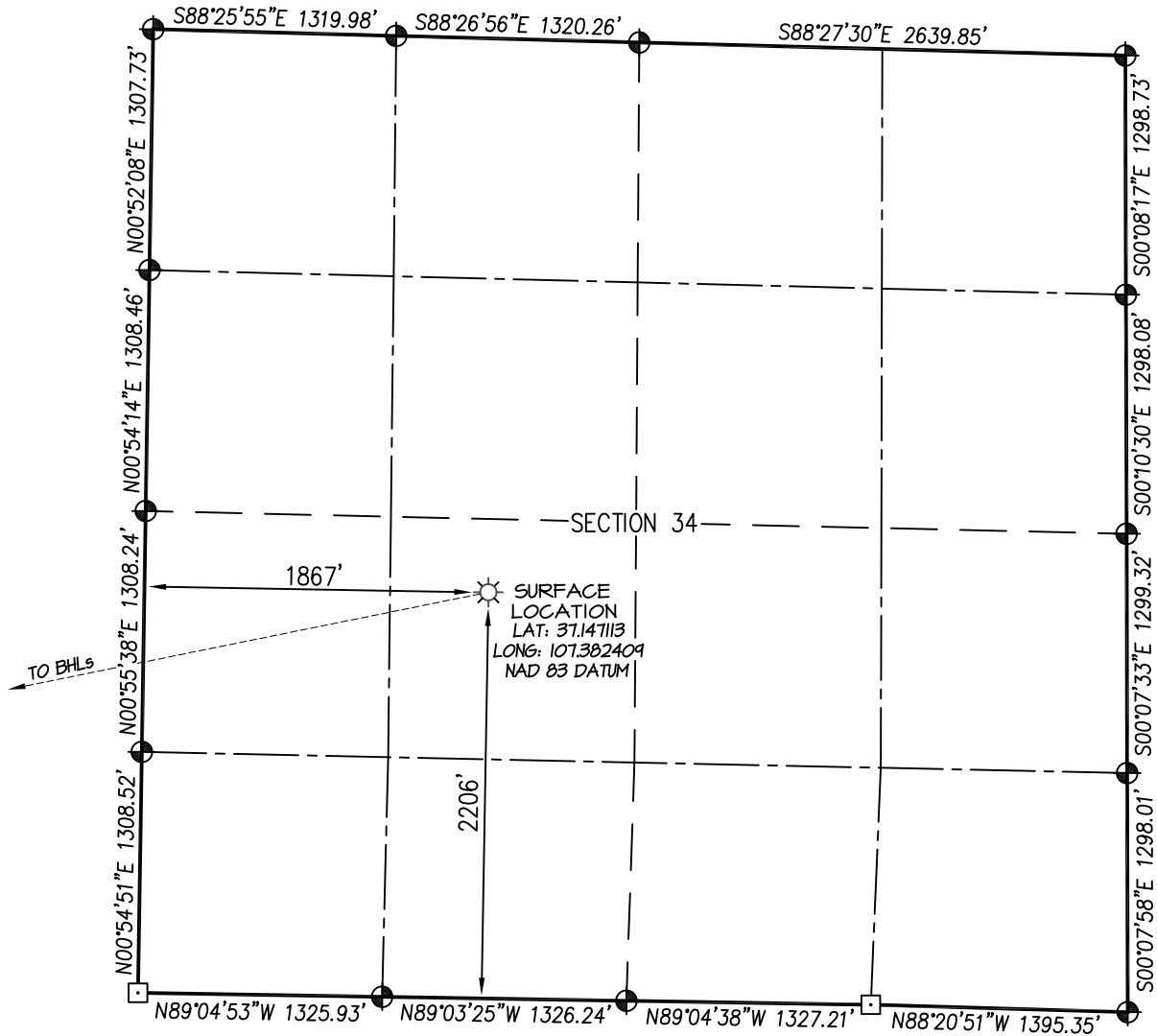
LATERAL #1 BOTTOM HOLE LOCATION: 731' FSL, 672' FWL

LATERAL #1 ST1 BOTTOM HOLE LOCATION: 2049' FSL, 634' FEL

GRAPHIC SCALE 1"=1000'




A horizontal graphic scale bar with alternating black and white segments. Below the bar, the numbers 0, 1000, and 2000 are printed, indicating the scale in feet. The text "GRAPHIC SCALE 1"=1000'" is printed vertically to the left of the bar.



- denotes found 3-1/4" B.L.M. brass cap.
 ⊕ denotes found 3-1/4" B.L.M. aluminum cap.
 ◇ denotes single proportion calculated position.

SEE SHEET 4 OF 4 FOR COORDINATE TABLE,
SURVEY NOTES, AND SURVEYOR'S CERTIFICATE.

SHEET 1 OF 4

DRAWN BY: K.R.	CHECKED BY: K.R.	FILE NO. CFP35IMP	JOB NO. CFP35	SURVEYED: 10/13/17 DRAWN: 3/8/18
				PREPARED FOR: CATAMOUNT ENERGY PARTNERS
<div style="text-align: center;">  <p>NORTHSTAR SURVEYING & MAPPING, INC.</p> </div>				
<div style="text-align: center;"> <p>768 County Rd. 308 DURANGO, CO. 81303 (970) 385-0851</p> </div>				

CATAMOUNT ENERGY PARTNERS: EBC #10

SURFACE LOCATION: 2206' FSL & 1867' FWL

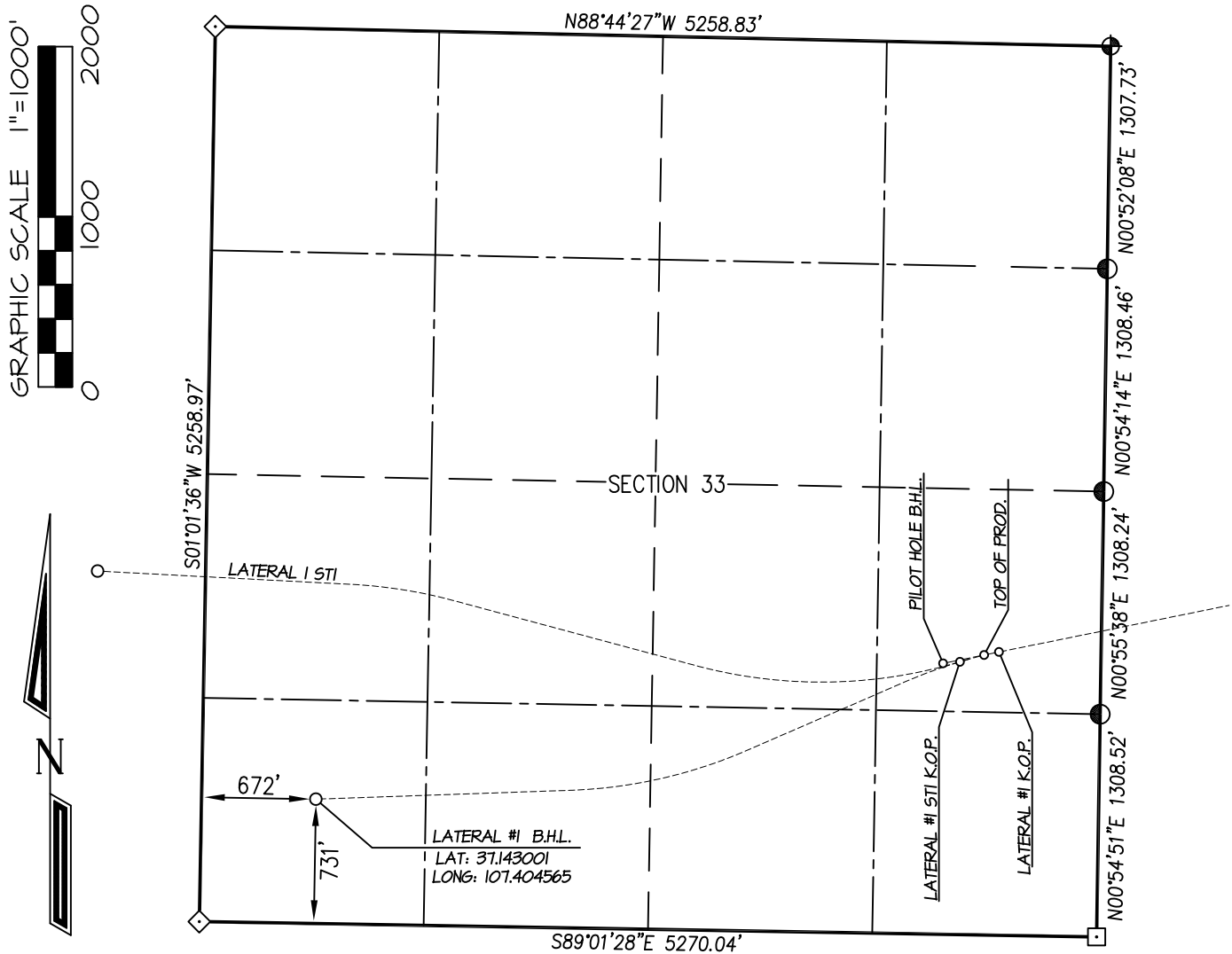
SECTION 34, T-34-N, R-5-W, S.U.L., N.M.P.M., ARCHULETA COUNTY, COLORADO. GROUND LEVEL ELEVATION: 6514'

LATERAL #1 BOTTOM HOLE LOCATION: 731' FSL, 672' FWL

SECTION 33, T-34-N, R-5-W, S.U.L., N.M.P.M., ARCHULETA COUNTY, COLORADO.

LATERAL #1 ST1 BOTTOM HOLE LOCATION: 2049' FSL, 634' FEL

SECTION 32, T-34-N, R-5-W, S.U.L., N.M.P.M., ARCHULETA COUNTY, COLORADO.



- denotes found 3-1/4" B.L.M. brass cap.
- ⊕ denotes found 3-1/4" B.L.M. aluminum cap.
- ◇ denotes single proportion calculated position.

NOTE:

SEE SHEET 4 OF 4 FOR COORDINATE TABLE,
SURVEY NOTES, AND SURVEYOR'S CERTIFICATE.

SHEET 2 OF 4

DRAWN BY: K.R.	SURVEYED: 10/13/17	PREPARED FOR:	
CHECKED BY: K.R.	DRAWN: 3/8/18	CATAMOUNT ENERGY PARTNERS	
FILE NO.: CEP-35WP	JOB NO.: CEP-35		
NORTHSTAR SURVEYING & MAPPING, INC. 768 County Rd. 308 DURANGO, CO. 81303 (970) 385-0851			

CATAMOUNT ENERGY PARTNERS: EBC #10

SURFACE LOCATION: 2206' FSL & 1867' FWL

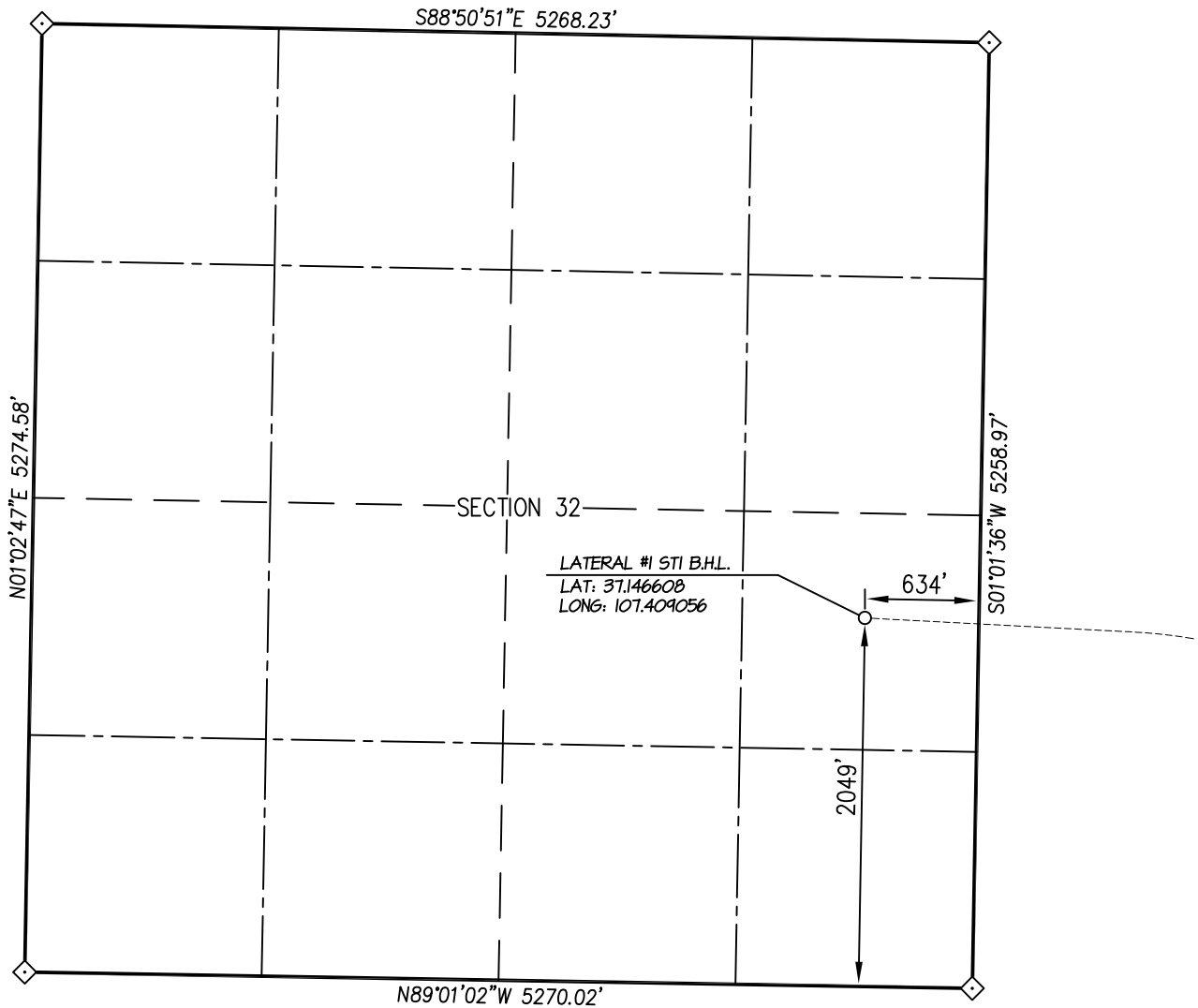
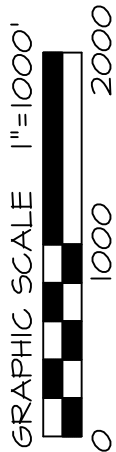
SECTION 34, T-34-N, R-5-W, S.U.L., N.M.P.M., ARCHULETA COUNTY, COLORADO. GROUND LEVEL ELEVATION: 6514'

LATERAL #1 BOTTOM HOLE LOCATION: 731' FSL, 672' FWL

SECTION 33, T-34-N, R-5-W, S.U.L., N.M.P.M., ARCHULETA COUNTY, COLORADO.

LATERAL #1 ST1 BOTTOM HOLE LOCATION: 2049' FSL, 634' FEL

SECTION 32, T-34-N, R-5-W, S.U.L., N.M.P.M., ARCHULETA COUNTY, COLORADO.



- denotes found 3-1/4" B.L.M. brass cap.
- ⊕ denotes found 3-1/4" B.L.M. aluminum cap.
- ◇ denotes single proportion calculated position.

NOTE:

SEE SHEET 4 OF 4 FOR COORDINATE TABLE,
SURVEY NOTES, AND SURVEYOR'S CERTIFICATE.

SHEET 3 OF 4

DRAWN BY: K.R.	SURVEYED: 10/13/17	PREPARED FOR:	
		CATAMOUNT ENERGY PARTNERS	
CHECKED BY: K.R.	DRAWN: 3/8/18	NORTHSTAR SURVEYING & MAPPING, INC.	
FILE NO.: CEP-35WP	JOB NO.: CEP-35		
		768 County Rd. 308 DURANGO, CO. 81303 (970) 385-0851	

CATAMOUNT ENERGY PARTNERS: EBC #10**SURFACE LOCATION: 2206' FSL & 1867' FWL****SECTION 34, T-34-N, R-5-W, S.U.L., N.M.P.M., ARCHULETA COUNTY, COLORADO. GROUND LEVEL ELEVATION: 6514'**

EBC 10	CSZ NAD '83	NAD '83	TIES	SEC/TWP/RNG
SURFACE HOLE LOCATION	N (Y) = 1,180,469.14' E (X) = 2,451,364.20'	LAT: 37.147113°N LONG: 107.382409°W	FSL = 2206' FWL = 1867'	SECTION 34 T-34-N, R-5-W
TOP OF PRODUCTION	N (Y) = 1,179,950.14' E (X) = 2,448,801.20'	LAT: 37.145545°N LONG: 107.391165°W	FSL = 1645' FEL = 687'	SECTION 33 T-34-N, R-5-W
PILOT HOLE - BOTTOM HOLE LOCATION	N (Y) = 1,179,901.14' E (X) = 2,448,560.20'	LAT: 37.145397°N LONG: 107.391988°W	FSL = 1592' FEL = 927'	SECTION 33 T-34-N, R-5-W
LATERAL #1 K.O.P.	N (Y) = 1,179,968.14' E (X) = 2,448,888.20'	LAT: 37.145600°N LONG: 107.390868°W	FSL = 1664' FEL = 600'	SECTION 33 T-34-N, R-5-W
PROPOSED BOTTOM HOLE LOCATION LATERAL #1	N (Y) = 1,179,103.14' E (X) = 2,444,877.20'	LAT: 37.143001°N LONG: 107.404565°W	FSL = 731' FWL = 672'	SECTION 33 T-34-N, R-5-W
LATERAL #1 ST1 K.O.P.	N (Y) = 1,179,910.14' E (X) = 2,448,659.20'	LAT: 37.145428°N LONG: 107.391649°W	FSL = 1602' FEL = 828'	SECTION 33 T-34-N, R-5-W
PROPOSED BOTTOM HOLE LOCATION LATERAL #1 ST1	N (Y) = 1,180,443.14' E (X) = 2,443,595.20'	LAT: 37.146608°N LONG: 107.409056°W	FSL = 2049' FEL = 634'	SECTION 32 T-34-N, R-5-W

NOTES:

1. WELL LOCATION FOOTAGE CALLS MEASURED PERPENDICULAR TO SECTION LINES.
2. WELL GPS OBSERVATION PERFORMED BY NELSON ROSS ON 10/13/17 - PDOP VALUE = 1.89
3. BEARINGS & DISTANCE SHOWN ARE FIELD MEASURED UNLESS OTHERWISE NOTED.
4. ALL MEASURED DISTANCES SHOWN ARE GRID DISTANCE WITH NO SCALE FACTOR APPLIED.
5. BEARINGS ARE BASED ON THE NORTH AMERICAN DATUM OF 1983, COLORADO SOUTH STATE PLANE COORDINATE SYSTEM, ZONE 0503.
6. ELEVATION IS BASED ON THE NORTH AMERICAN VERTICAL DATUM OF 1988 (GEOID12A).



I, KENNETH E. REA, A REGISTERED PROFESSIONAL LAND SURVEYOR IN THE STATE OF COLORADO, DO HEREBY CERTIFY THAT THE WELL LOCATION SHOWN ON THIS PLAT IS ACCURATELY PLOTTED FROM FIELD NOTES OF ACTUAL SURVEYS MADE UNDER MY DIRECT SUPERVISION, AND THAT THIS PLAT IS NOT A LAND SURVEY PLAT OR IMPROVEMENT SURVEY PLAT, AND THAT IT IS NOT TO BE RELIED UPON FOR THE ESTABLISHMENT OF FENCE, BUILDING, OR OTHER FUTURE IMPROVEMENT LINES.

SHEET 4 OF 4

DRAWN BY: K.R.		CHECKED BY: K.R.		FILE NO.: CEP35WP		JOB NO.	
SURVEYED: 10/13/17		DRAWN: 3/8/18		CEP35			
PREPARED FOR:							
CATAMOUNT ENERGY PARTNERS							
NORTHSTAR SURVEYING & MAPPING, INC. 768 County Rd. 308 DURANGO, CO. 81303 (970) 385-0851							