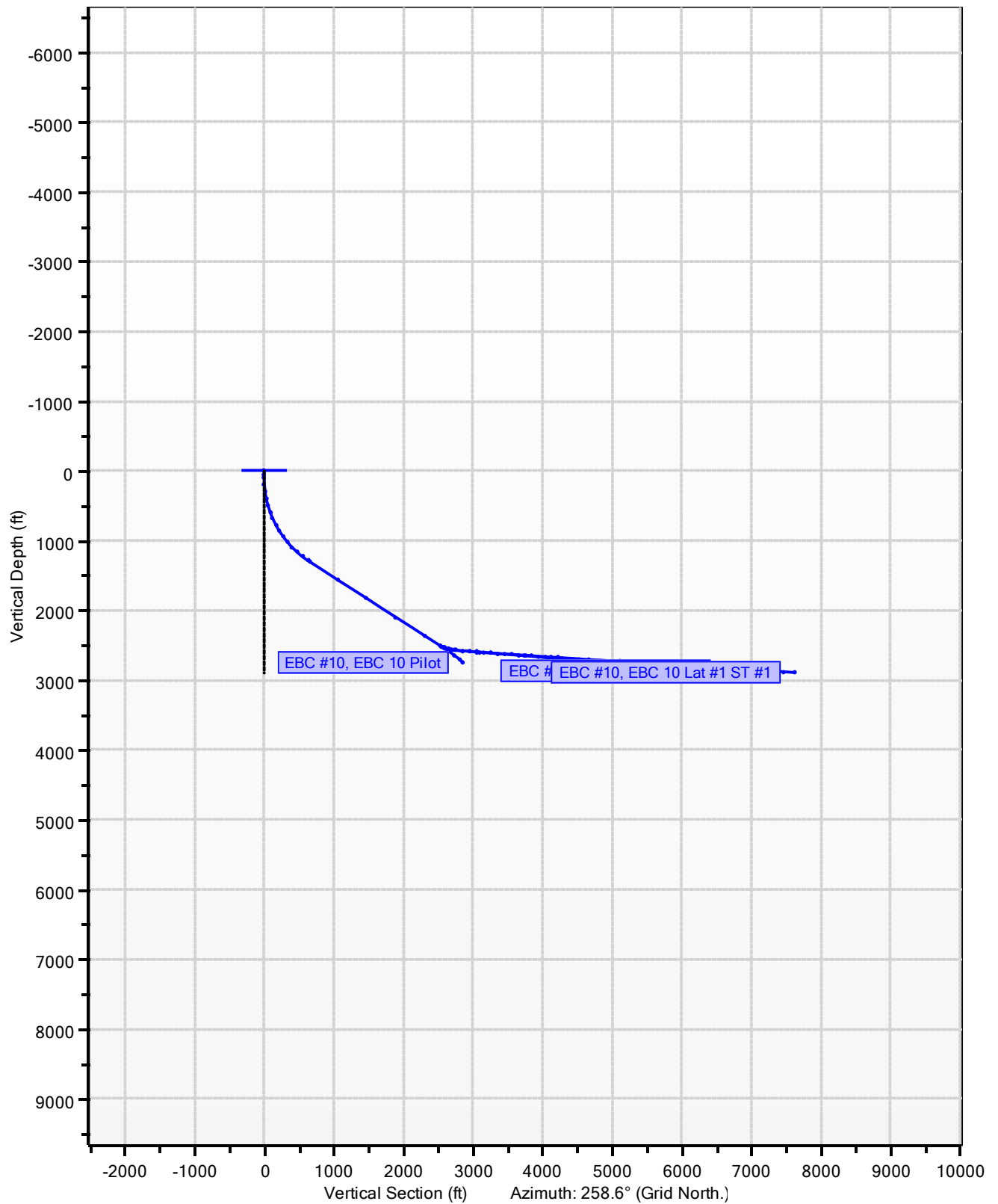


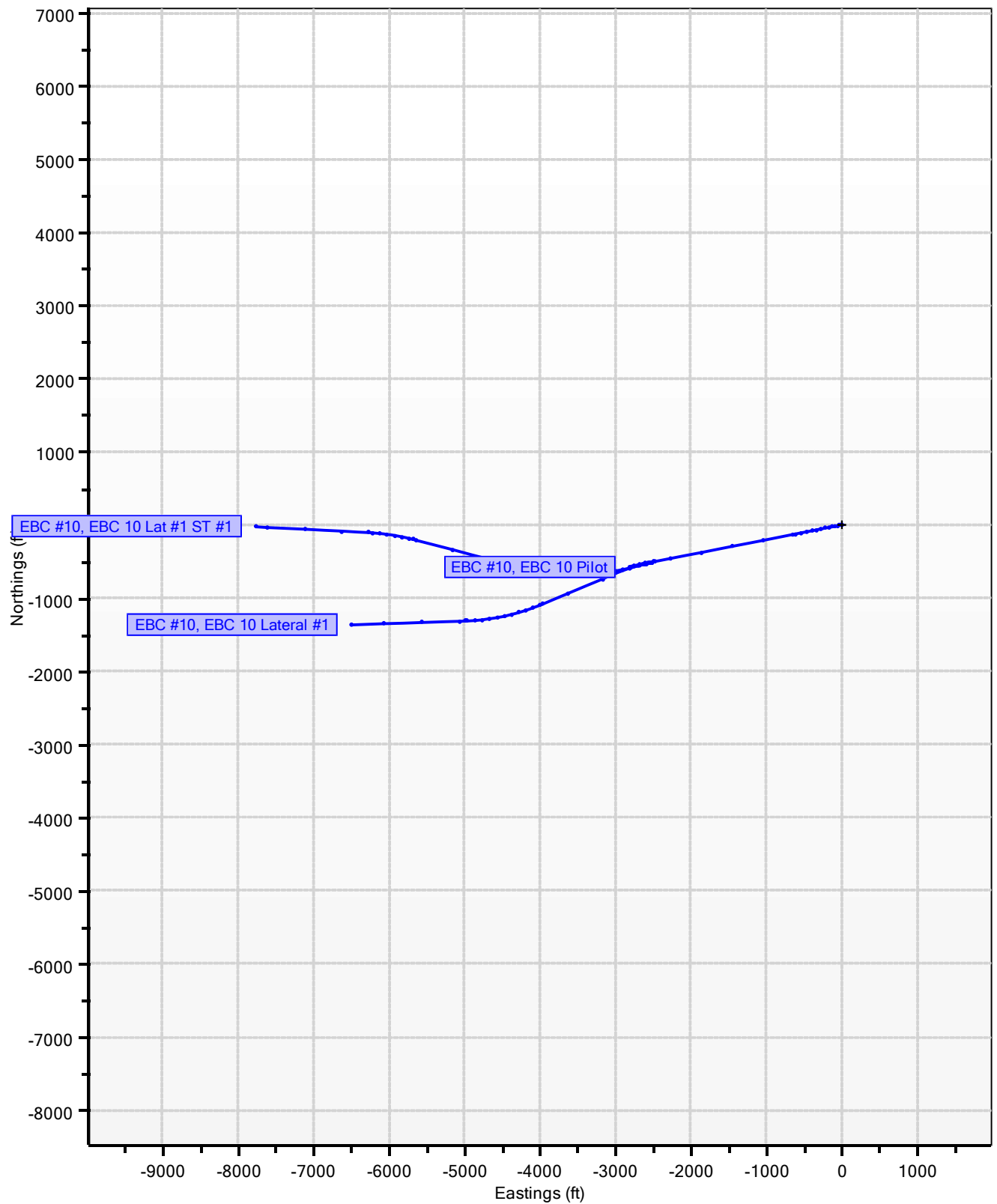
**East Bull Creek Well
EBC Pad 5
EBC #10
EBC 10 Pilot**

**Catamount Energy Partners
Proposal Report**

EBC Pad 5, EBC #10



EBC Pad 5, EBC #10



Catamount Energy Partners

Proposal Report



Database:	San Juan Basin	Local Coordinate Reference:	EBC #10
Company:		TVD Reference:	EBC #10
Project:	East Bull Creek Well	MD Reference:	EBC #10
Site:	EBC Pad 5	North reference:	Grid North
Well:	EBC #10	Survey Calculation Method:	Minimum Curvature
Wellbore:			
Proposal:	EBC 10 Pilot		

Project	East Bull Creek Well		
Map System:	HPGN Colorado State Planes	System Datum:	Mean Sea Level
Geo Datum:	High Precision GPS Network (aka HARN, NAD83/9)		
Map Zone:	Southern Zone		

Site	EBC Pad 5			
Site Position:		Northing:	+1180469	Latitude: 37.14711221° N
From:	Map	Easting:	+2451364	Longitude: 107.38240999° W
Position Uncertainty:	0ft	Slot Radius:	0in	Grid Convergence: -1.2°

Well	EBC #10			
Well Position:	+N/-S	0ft	Northing:	+1180469
	+E/-W	0ft	Easting:	+2451364
Position Uncertainty:		1ft	Wellhead Elevation:	6530ft
			Ground Level:	6514ft

Magnetics	Model Name	Sample Date	Declination (°)	Dip Angle (°)	Field Strength (nT)
	User Defined	2/7/2018	0.0	0.0	0.0

Proposal	EBC 10 Pilot			
Audit Notes:				
Version:		Phase:		Tie On Depth: 0ft

Vertical Section:	Depth from TVD (ft)	+N/-S (ft)	+E/-W (ft)	Direction (°)
	0	0	0	258.6

Survey Program		2/21/2018			
From (ft)	To (ft)	Survey (Wellbore)	Tool Name	Description	
0	4167	EBC 10 Pilot	MWD	MWD	

Plan Sections										
Measured Depth (ft)	Inclination (°)	Azimuth (°)	Vertical Depth (ft)	+N/-S (ft)	+E/-W (ft)	Dogleg Rate (°/100ft)	Build Rate (°/100ft)	Turn Rate (°/100ft)	TFO (°)	Target
0	0.0	0.0	0	0	0					
50	0.0	0.0	50	0	0	0.0	0.0	0.0	0.0	
100	0.0	0.0	100	0	0	0.0	0.0	0.0	0.0	
1534	57.4	258.6	1306	-131	-647	4.0	4.0	0.0	-101.4	
3839	57.4	258.6	2549	-516	-2549	0.0	0.0	0.0	0.0	Lat 1 HL Entry
4167	47.5	258.6	2749	-568	-2804	3.0	-3.0	0.0	179.8	Lat 1 ST 1 BHL

Planned Survey											
Measured Depth (ft)	Incl. (°)	Az. (°)	Vertical Depth (ft)	Sub Sea Depth (ft)	+N/-S (ft)	+E/-W (ft)	Vertical Section (ft)	Closure Distance (ft)	Closure Azimuth (°)	Dogleg Rate (°/100ft)	Comments/ Formations
0	0.0	0.0	0	-6530	0	0	0	0	0.0	0.0	MWD
16	0.0	0.0	16	-6514	0	0	0	0	0.0	0.0	Animas
50	0.0	0.0	50	-6480	0	0	0	0	0.0	0.0	
100	0.0	0.0	100	-6430	0	0	0	0	0.0	0.0	
120	0.8	258.6	120	-6410	0	0	0	0	258.6	4.0	

Catamount Energy Partners

Proposal Report



Database:	San Juan Basin	Local Coordinate Reference:	EBC #10
Company:		TVD Reference:	EBC #10
Project:	East Bull Creek Well	MD Reference:	EBC #10
Site:	EBC Pad 5	North reference:	Grid North
Well:	EBC #10	Survey Calculation Method:	Minimum Curvature
Wellbore:			
Proposal:	EBC 10 Pilot		

Planned Survey											
Measured Depth (ft)	Incl. (°)	Az. (°)	Vertical Depth (ft)	Sub Sea Depth (ft)	+N/-S (ft)	+E/-W (ft)	Vertical Section (ft)	Closure Distance (ft)	Closure Azimuth (°)	Dogleg Rate (°/100ft)	Comments/ Formations
150	2.0	258.6	150	-6380	0	-1	1	1	258.6	4.0	
180	3.2	258.6	180	-6350	0	-2	2	2	258.6	4.0	
210	4.4	258.6	210	-6320	-1	-4	4	4	258.6	4.0	
240	5.6	258.6	240	-6290	-1	-7	7	7	258.6	4.0	
270	6.8	258.6	270	-6260	-2	-10	10	10	258.6	4.0	
300	8.0	258.6	299	-6231	-3	-14	14	14	258.6	4.0	
330	9.2	258.6	329	-6201	-4	-18	18	18	258.6	4.0	
360	10.4	258.6	359	-6171	-5	-23	24	24	258.6	4.0	
390	11.6	258.6	388	-6142	-6	-29	29	29	258.6	4.0	
420	12.8	258.6	417	-6113	-7	-35	36	36	258.6	4.0	
450	14.0	258.6	447	-6083	-8	-42	43	43	258.6	4.0	
480	15.2	258.6	476	-6054	-10	-49	50	50	258.6	4.0	
510	16.4	258.6	504	-6026	-12	-57	58	58	258.6	4.0	
540	17.6	258.6	533	-5997	-13	-66	67	67	258.6	4.0	
570	18.8	258.6	562	-5968	-15	-75	76	76	258.6	4.0	
600	20.0	258.6	590	-5940	-17	-85	86	86	258.6	4.0	
630	21.2	258.6	618	-5912	-19	-95	97	97	258.6	4.0	
660	22.4	258.6	646	-5884	-21	-106	108	108	258.6	4.0	
690	23.6	258.6	673	-5857	-24	-117	120	120	258.6	4.0	
720	24.8	258.6	701	-5829	-26	-129	132	132	258.6	4.0	
750	26.0	258.6	728	-5802	-29	-142	145	145	258.6	4.0	
780	27.2	258.6	755	-5775	-31	-155	158	158	258.6	4.0	
810	28.4	258.6	781	-5749	-34	-169	172	172	258.6	4.0	
840	29.6	258.6	808	-5722	-37	-183	187	187	258.6	4.0	
870	30.8	258.6	833	-5697	-40	-198	202	202	258.6	4.0	
900	32.0	258.6	859	-5671	-43	-213	218	218	258.6	4.0	
930	33.2	258.6	884	-5646	-46	-229	234	234	258.6	4.0	
960	34.4	258.6	909	-5621	-50	-246	251	251	258.6	4.0	
990	35.6	258.6	934	-5596	-53	-262	268	268	258.6	4.0	
1020	36.8	258.6	958	-5572	-57	-280	285	285	258.6	4.0	
1050	38.0	258.6	982	-5548	-60	-298	304	304	258.6	4.0	
1080	39.2	258.6	1005	-5525	-64	-316	322	322	258.6	4.0	
1110	40.4	258.6	1028	-5502	-68	-335	342	342	258.6	4.0	
1140	41.6	258.6	1051	-5479	-72	-354	361	361	258.6	4.0	
1170	42.8	258.6	1073	-5457	-76	-374	381	381	258.6	4.0	
1200	44.0	258.6	1095	-5435	-80	-394	402	402	258.6	4.0	
1230	45.2	258.6	1116	-5414	-84	-415	423	423	258.6	4.0	
1260	46.4	258.6	1137	-5393	-88	-436	445	445	258.6	4.0	
1290	47.6	258.6	1158	-5372	-93	-457	467	467	258.6	4.0	
1320	48.8	258.6	1178	-5352	-97	-479	489	489	258.6	4.0	
1350	50.0	258.6	1197	-5333	-102	-501	512	512	258.6	4.0	
1380	51.2	258.6	1216	-5314	-106	-524	535	535	258.6	4.0	
1410	52.4	258.6	1235	-5295	-111	-547	558	558	258.6	4.0	
1440	53.6	258.6	1253	-5277	-116	-571	582	582	258.6	4.0	
1470	54.8	258.6	1270	-5260	-120	-595	607	607	258.6	4.0	
1500	56.0	258.6	1288	-5242	-125	-619	631	631	258.6	4.0	
1530	57.2	258.6	1304	-5226	-130	-643	656	656	258.6	4.0	
1534	57.4	258.6	1306	-5224	-131	-647	660	660	258.6	4.0	
1600	57.4	258.6	1342	-5188	-142	-701	715	715	258.6	0.0	
1700	57.4	258.6	1396	-5134	-159	-784	800	800	258.6	0.0	

Catamount Energy Partners

Proposal Report



Database:	San Juan Basin	Local Coordinate Reference:	EBC #10
Company:		TVD Reference:	EBC #10
Project:	East Bull Creek Well	MD Reference:	EBC #10
Site:	EBC Pad 5	North reference:	Grid North
Well:	EBC #10	Survey Calculation Method:	Minimum Curvature
Wellbore:			
Proposal:	EBC 10 Pilot		

Planned Survey											
Measured Depth (ft)	Incl. (°)	Az. (°)	Vertical Depth (ft)	Sub Sea Depth (ft)	+N/-S (ft)	+E/-W (ft)	Vertical Section (ft)	Closure Distance (ft)	Closure Azimuth (°)	Dogleg Rate (°/100ft)	Comments/ Formations
1800	57.4	258.6	1450	-5080	-175	-866	884	884	258.6	0.0	
1900	57.4	258.6	1504	-5026	-192	-949	968	968	258.6	0.0	
2000	57.4	258.6	1557	-4973	-209	-1031	1052	1052	258.6	0.0	
2100	57.4	258.6	1611	-4919	-225	-1114	1136	1136	258.6	0.0	
2200	57.4	258.6	1665	-4865	-242	-1196	1221	1221	258.6	0.0	
2300	57.4	258.6	1719	-4811	-259	-1279	1305	1305	258.6	0.0	
2400	57.4	258.6	1773	-4757	-276	-1361	1389	1389	258.6	0.0	
2500	57.4	258.6	1827	-4703	-292	-1444	1473	1473	258.6	0.0	
2600	57.4	258.6	1881	-4649	-309	-1527	1558	1558	258.6	0.0	
2650	57.4	258.6	1908	-4622	-317	-1568	1600	1600	258.6	0.0	Kirtland
2700	57.4	258.6	1935	-4595	-326	-1609	1642	1642	258.6	0.0	
2800	57.4	258.6	1989	-4541	-342	-1692	1726	1726	258.6	0.0	
2819	57.4	258.6	1999	-4531	-346	-1707	1742	1742	258.6	0.0	Farmington
2900	57.4	258.6	2043	-4487	-359	-1774	1810	1810	258.6	0.0	
3000	57.4	258.6	2097	-4433	-376	-1857	1894	1894	258.6	0.0	
3100	57.4	258.6	2151	-4379	-393	-1939	1979	1979	258.6	0.0	
3200	57.4	258.6	2205	-4325	-409	-2022	2063	2063	258.6	0.0	
3300	57.4	258.6	2259	-4271	-426	-2104	2147	2147	258.6	0.0	
3342	57.4	258.6	2281	-4249	-433	-2139	2182	2182	258.6	0.0	Lower Kirtland
3400	57.4	258.6	2312	-4218	-443	-2187	2231	2231	258.6	0.0	
3500	57.4	258.6	2366	-4164	-459	-2269	2315	2315	258.6	0.0	
3600	57.4	258.6	2420	-4110	-476	-2352	2400	2400	258.6	0.0	
3700	57.4	258.6	2474	-4056	-493	-2435	2484	2484	258.6	0.0	
3800	57.4	258.6	2528	-4002	-510	-2517	2568	2568	258.6	0.0	
3839	57.4	258.6	2549	-3981	-516	-2549	2601	2601	258.6	0.0	Lat 1 HL Entry
3840	57.3	258.6	2550	-3980	-516	-2550	2602	2602	258.6	3.0	
3855	56.9	258.6	2558	-3972	-519	-2563	2615	2615	258.6	3.0	Fruitland
3870	56.4	258.6	2566	-3964	-521	-2575	2627	2627	258.6	3.0	
3900	55.5	258.6	2583	-3947	-526	-2599	2652	2652	258.6	3.0	
3930	54.6	258.6	2600	-3930	-531	-2623	2676	2676	258.6	3.0	
3960	53.7	258.6	2618	-3912	-536	-2647	2701	2701	258.6	3.0	
3990	52.8	258.6	2636	-3894	-541	-2671	2725	2725	258.6	3.0	
4001	52.5	258.6	2642	-3888	-542	-2679	2733	2733	258.6	3.0	Pictured Cliffs
4020	51.9	258.6	2654	-3876	-545	-2694	2749	2749	258.6	3.0	
4050	51.0	258.6	2673	-3857	-550	-2717	2772	2772	258.6	3.0	
4080	50.1	258.6	2692	-3838	-555	-2740	2795	2795	258.6	3.0	
4110	49.2	258.6	2711	-3819	-559	-2762	2818	2818	258.6	3.0	
4140	48.3	258.6	2731	-3799	-564	-2784	2841	2841	258.6	3.0	
4167	47.5	258.6	2749	-3781	-568	-2804	2861	2861	258.6	3.0	Lat 1 BHL Lat 1 ST 1 BHL

Targets										
Target Name	Dip Angle (°)	Dip Dir. (°)	TVD (ft)	+N/-S (ft)	+E/-W (ft)	Northing (ft)	Easting (ft)	Latitude	Longitude	
-hit/miss target										
-Shape										
Lat 1 BHL			2870	-1366	-6487	+1179103	+2444877	37.14300029° N	107.40456567° W	
- proposal misses the target center by 3771ft at 4167ft MD (2749TVD, -568, -2804)										
- Point										

Catamount Energy Partners

Proposal Report



Database:	San Juan Basin	Local Coordinate Reference:	EBC #10
Company:		TVD Reference:	EBC #10
Project:	East Bull Creek Well	MD Reference:	EBC #10
Site:	EBC Pad 5	North reference:	Grid North
Well:	EBC #10	Survey Calculation Method:	Minimum Curvature
Wellbore:			
Proposal:	EBC 10 Pilot		

Targets									
Target Name	Dip Angle (°)	Dip Dir. (°)	TVD (ft)	+N/-S (ft)	+E/-W (ft)	Northing (ft)	Easting (ft)	Latitude	Longitude
-hit/miss target									
-Shape									
Lat 1 HL Entry			2549	-516	-2549	+1179953	+2448815	37.14555397° N	107.39111757° W
- proposal hits the target center									
- Point									
Lat 1 ST 1 BHL			2889	-26	-7769	+1180443	+2443595	37.14660782° N	107.40905680° W
- proposal misses the target center by 4996ft at 4167ft MD (2749TVD, -568, -2804)									
- Point									

Formations						Dip Angle (°)	Dip Direction (°)
Measured Depth (ft)	Vertical Depth (ft)	Subsea Depth (ft)	Name				
16	16	-6514	Animas			0.0	0.0
2650	1908	-4622	Kirtland			0.0	0.0
2819	1999	-4531	Farmington			0.0	0.0
3342	2281	-4249	Lower Kirtland			0.0	0.0
3855	2558	-3972	Fruitland			0.0	0.0
4001	2642	-3888	Pictured Cliffs			0.0	0.0

Checked By:	Approved By:	Date:
-------------	--------------	-------

Disclaimer Notice

Catamount Energy Partners makes no warranty of any kind with respect to the subject matter included herein or the completeness or accuracy of this document.

Catamount Energy Partners are not responsible for any actions (or lack thereof) taken as a result of relying on or in any way using information contained in this document and in no event shall be liable for any damages resulting from reliance on or use of this information.