

OPERATOR: **Extraction Oil & Gas**

WELL NAME: **WS Sunrise 1-5-5**

FIELD NAME: DJ Basin - Wattenberg

DRILLING RIG: Patterson 346

API #: 05-123-46047

LAT/LONG: 40.43719, -104.68387

SURFACE HOLE: SWSE S32-T6N-R65W, 248' FSL, 1722' FEL

BOTTOM HOLE: S5-T5N-R65W, 460' FSL, 1918' FEL



Earth Science Agency, LLC

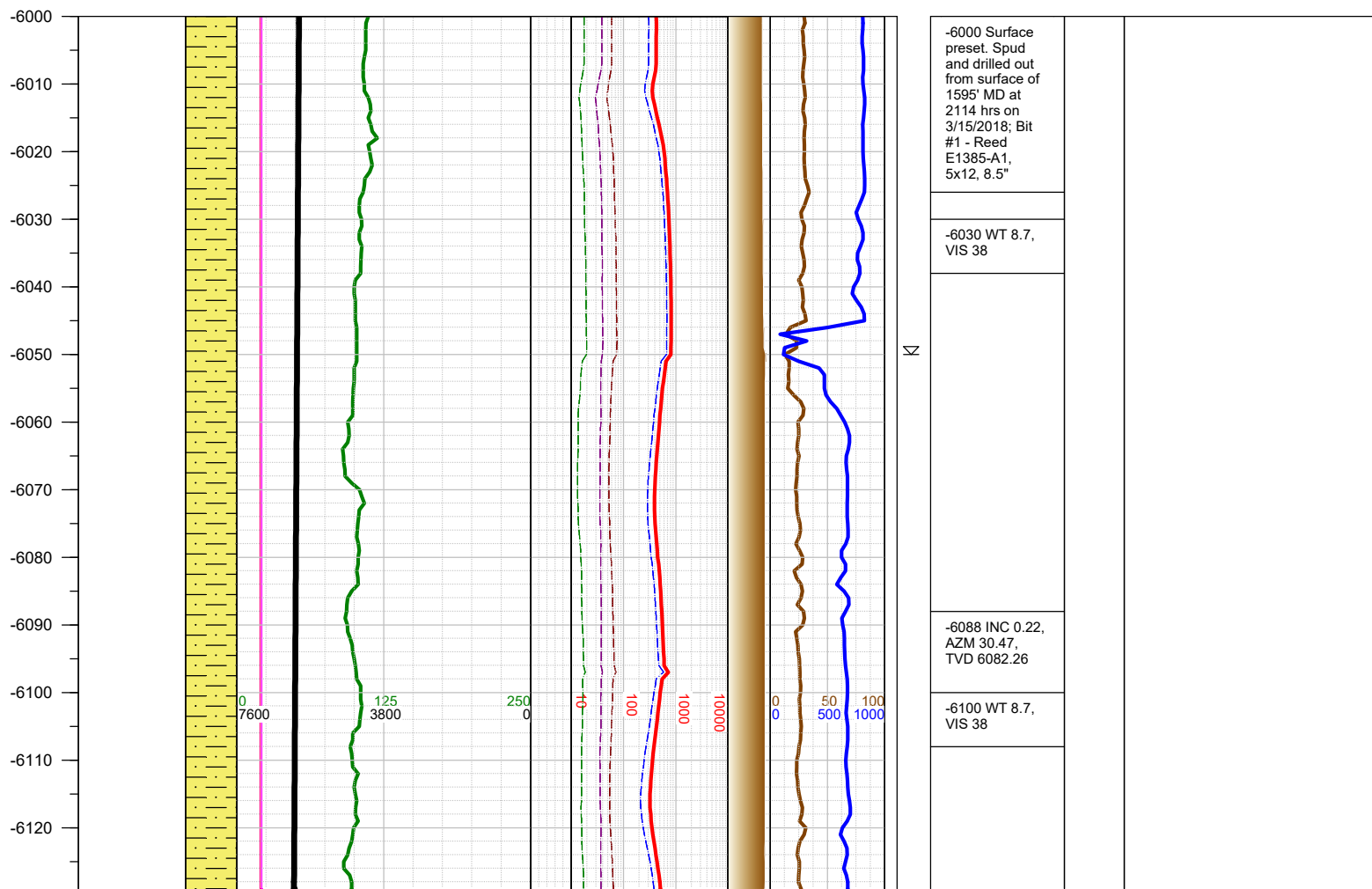
COUNTY: Weld
STATE: Colorado
GROUND ELEVATION: 4641'
KELLY BUSHING: 4666'
DRILLING FLUID: OBM
TVD VS. MD: 6969' / 11830'
SPUD DATE: March 15, 2018
TD DATE: March 18, 2018

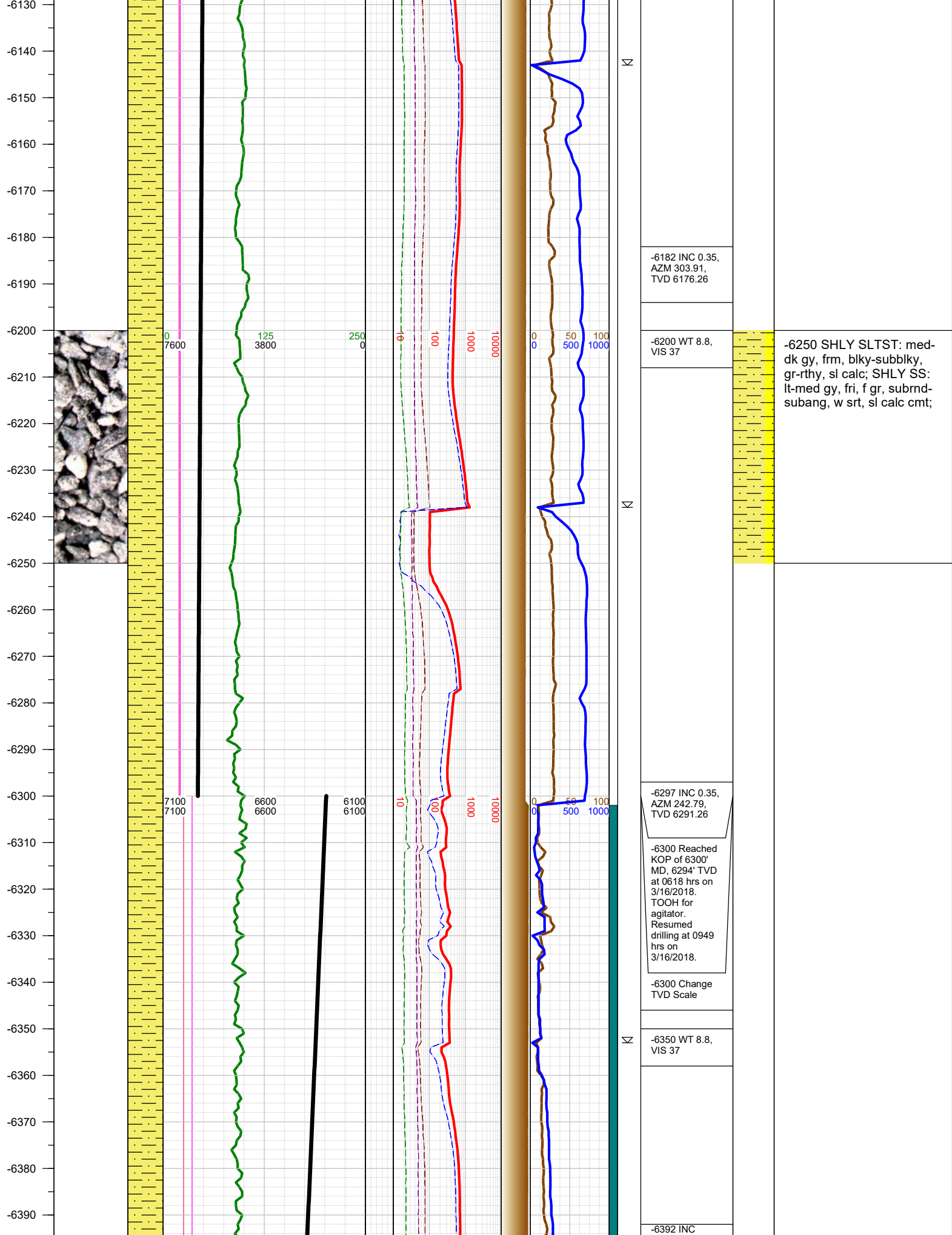
DEPTHS LOGGED: 6000' - 11830'
DATES LOGGED: March 16, 2018 - March 18, 2018
GEOLOGISTS: Brian Whitfield, Levi Heintzelman
SCALE: 5" = 100'

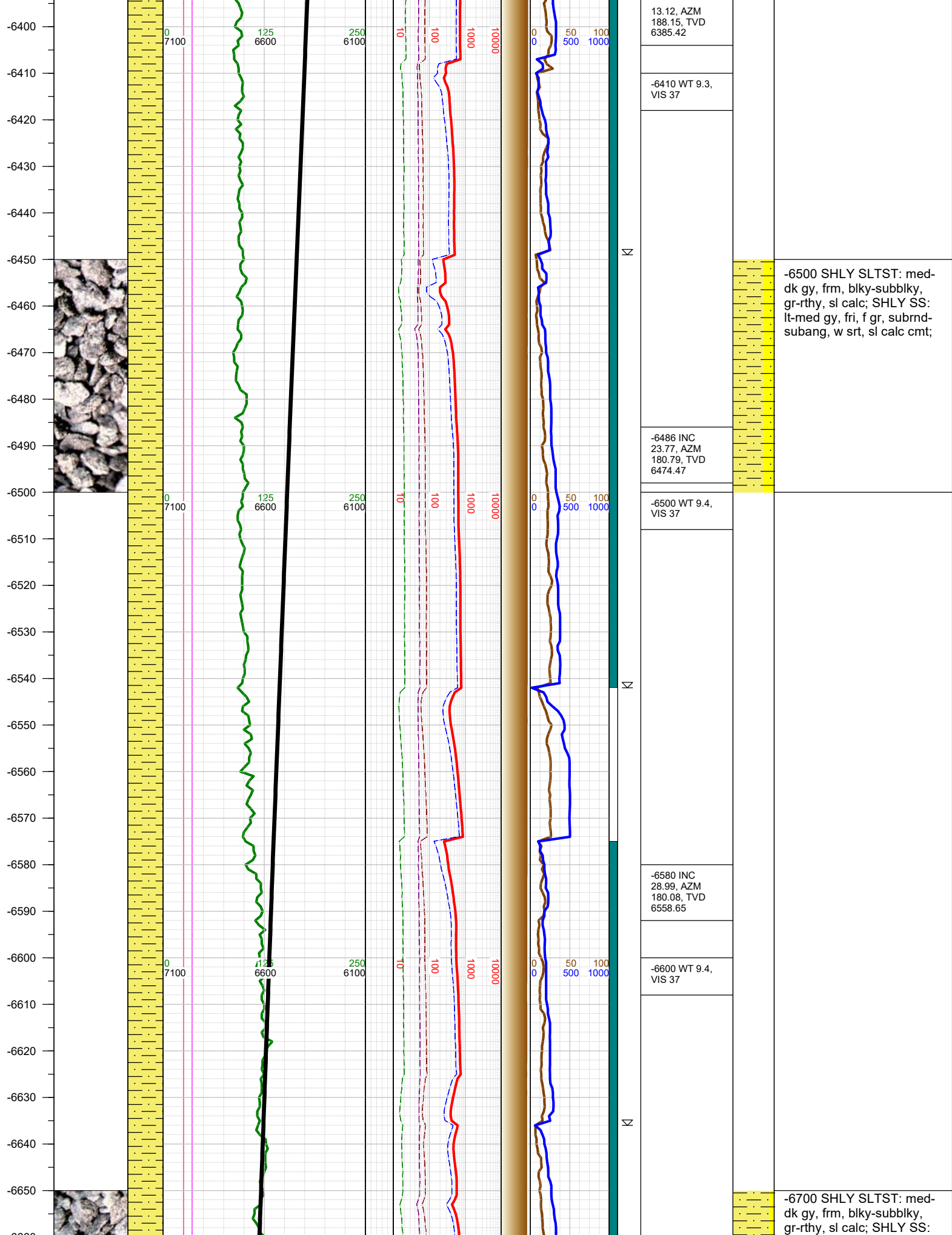
LEGEND

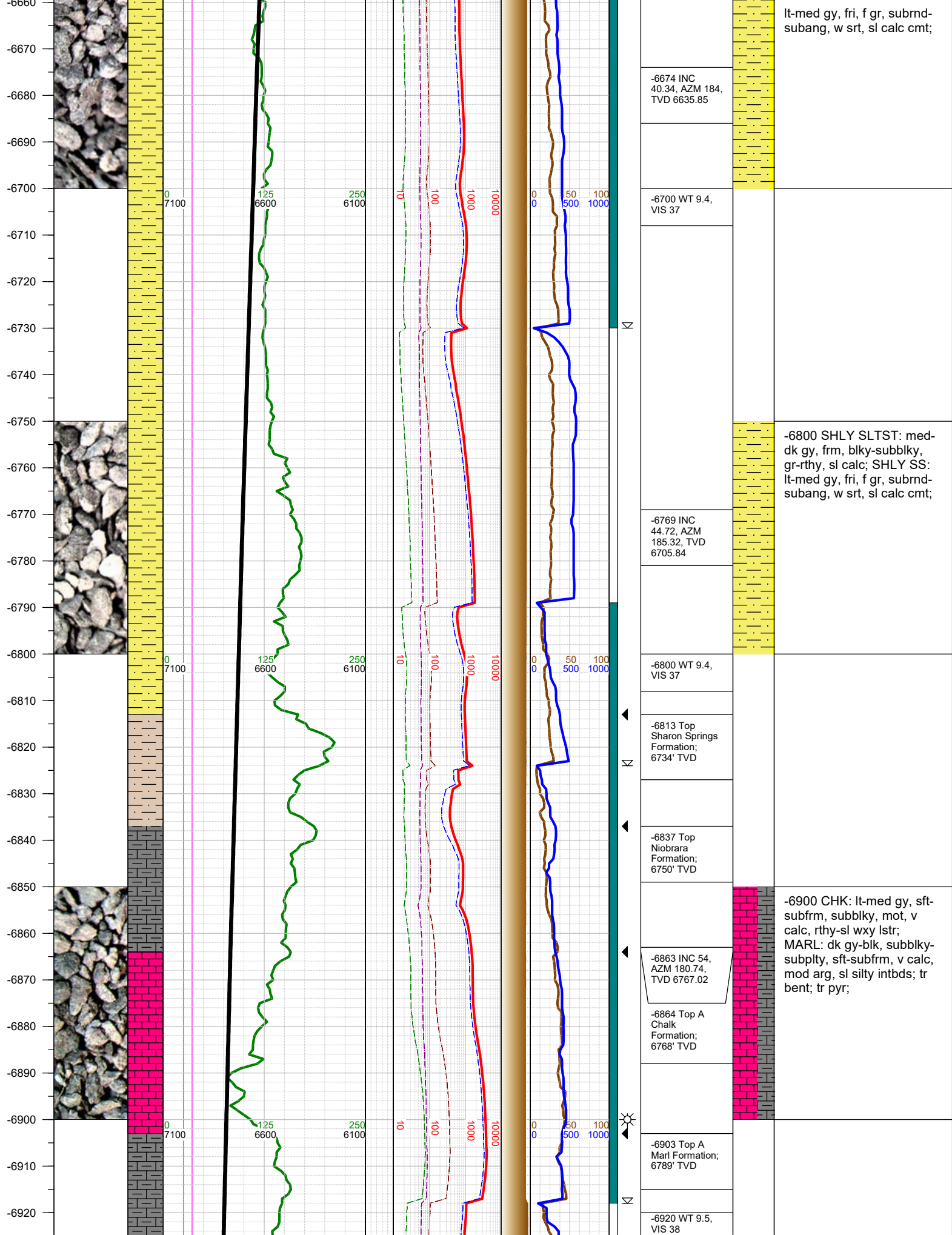


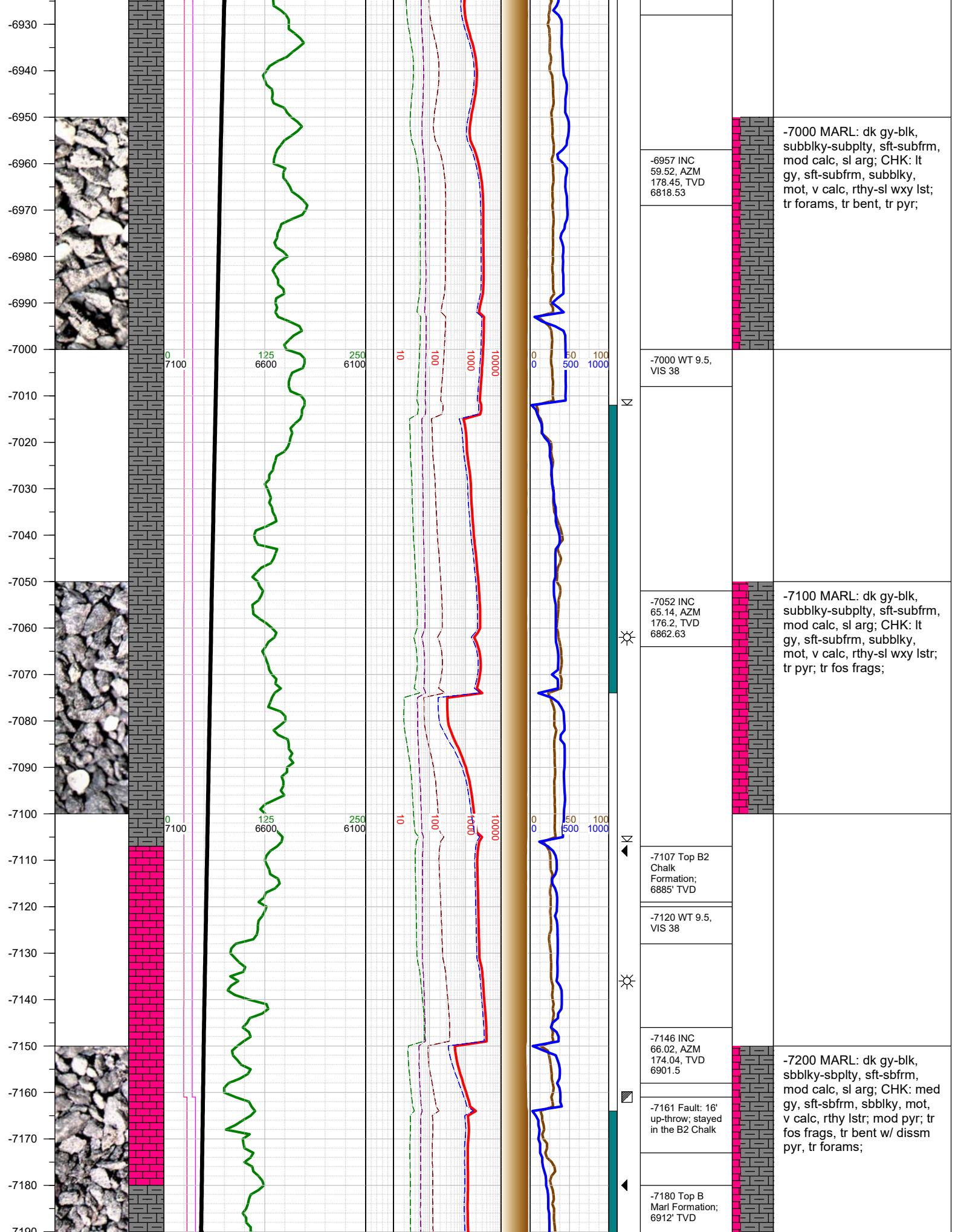
FORMATION \approx CONNECTION Δ MIDNIGHT NEW BIT GAS SHOW FAULT

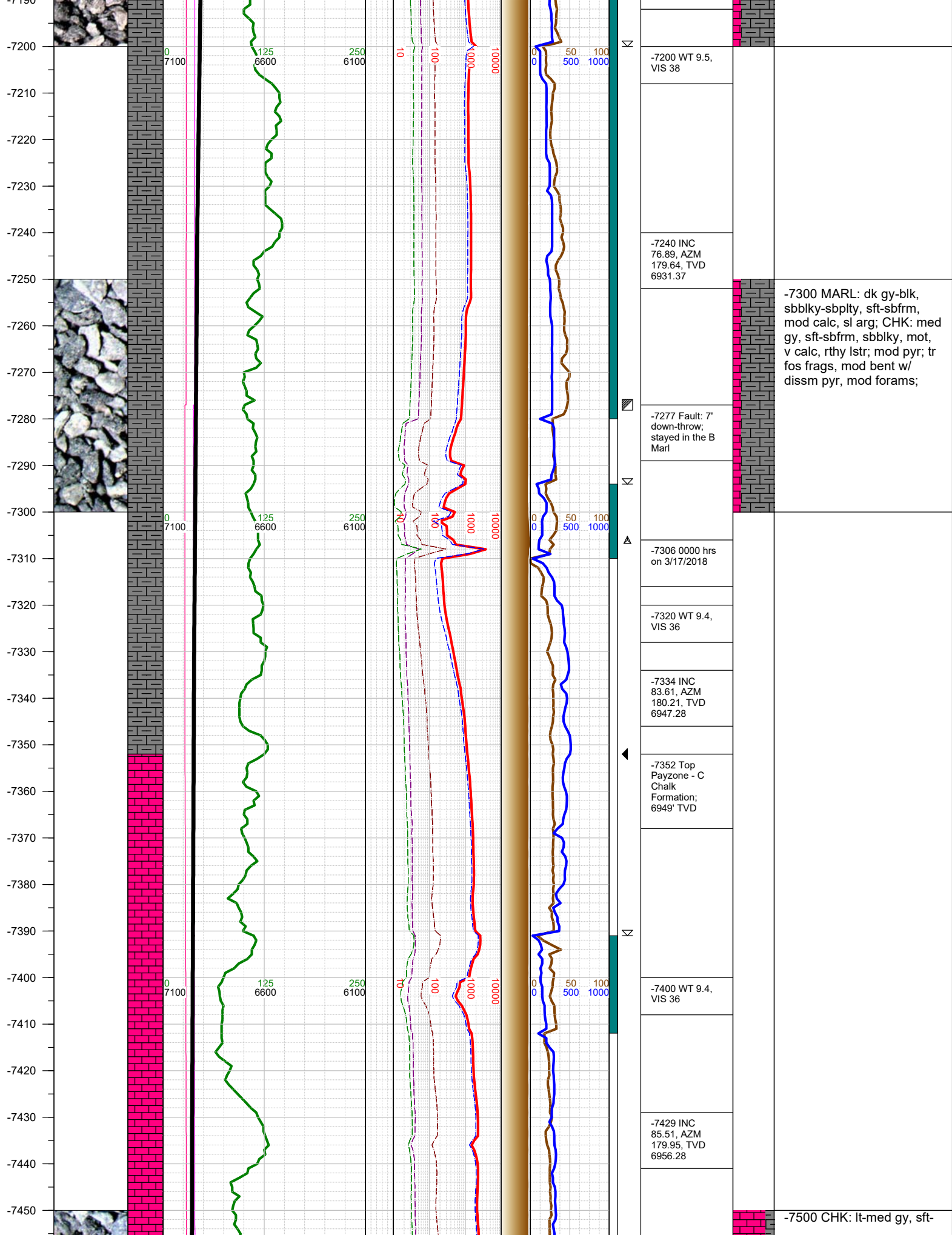


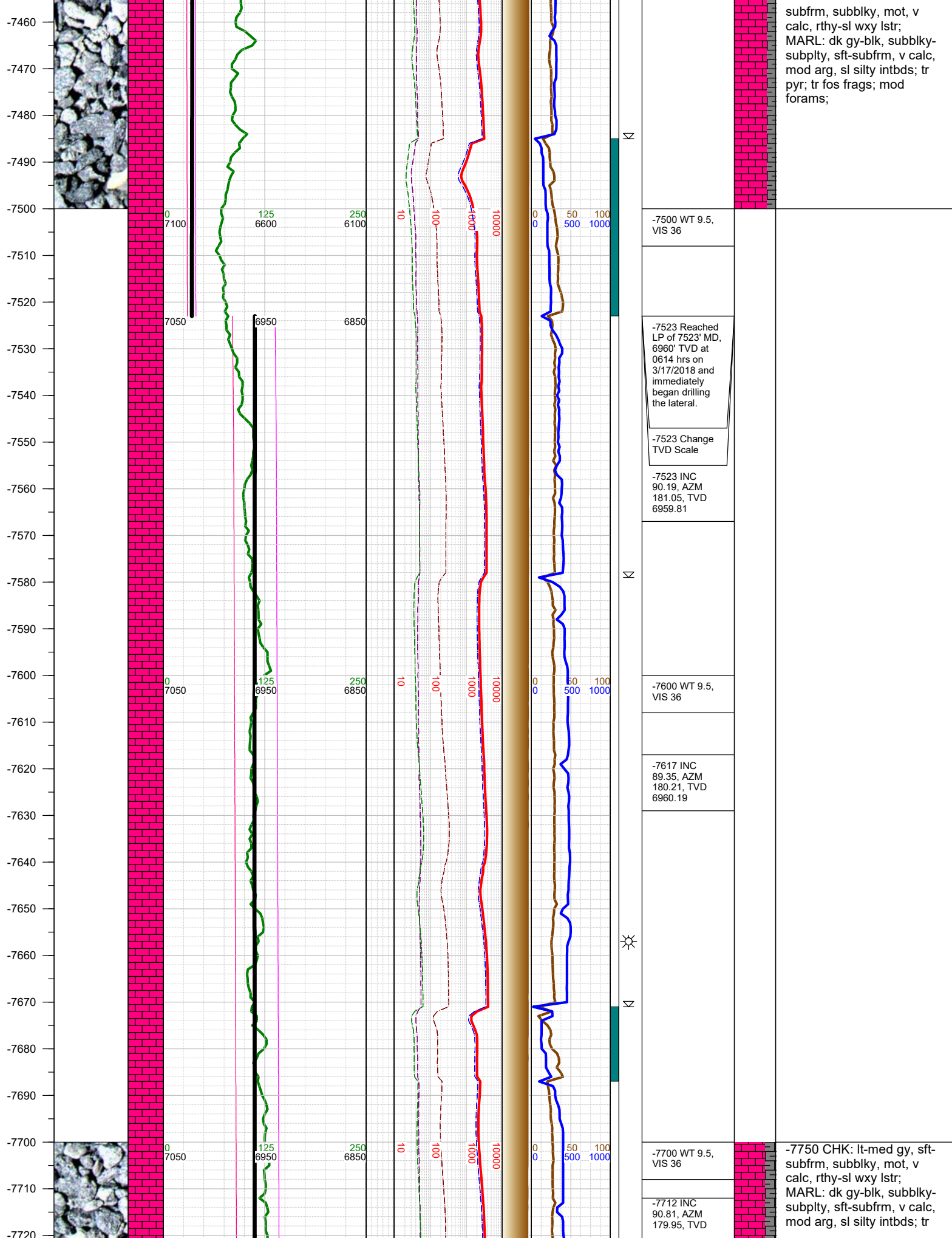


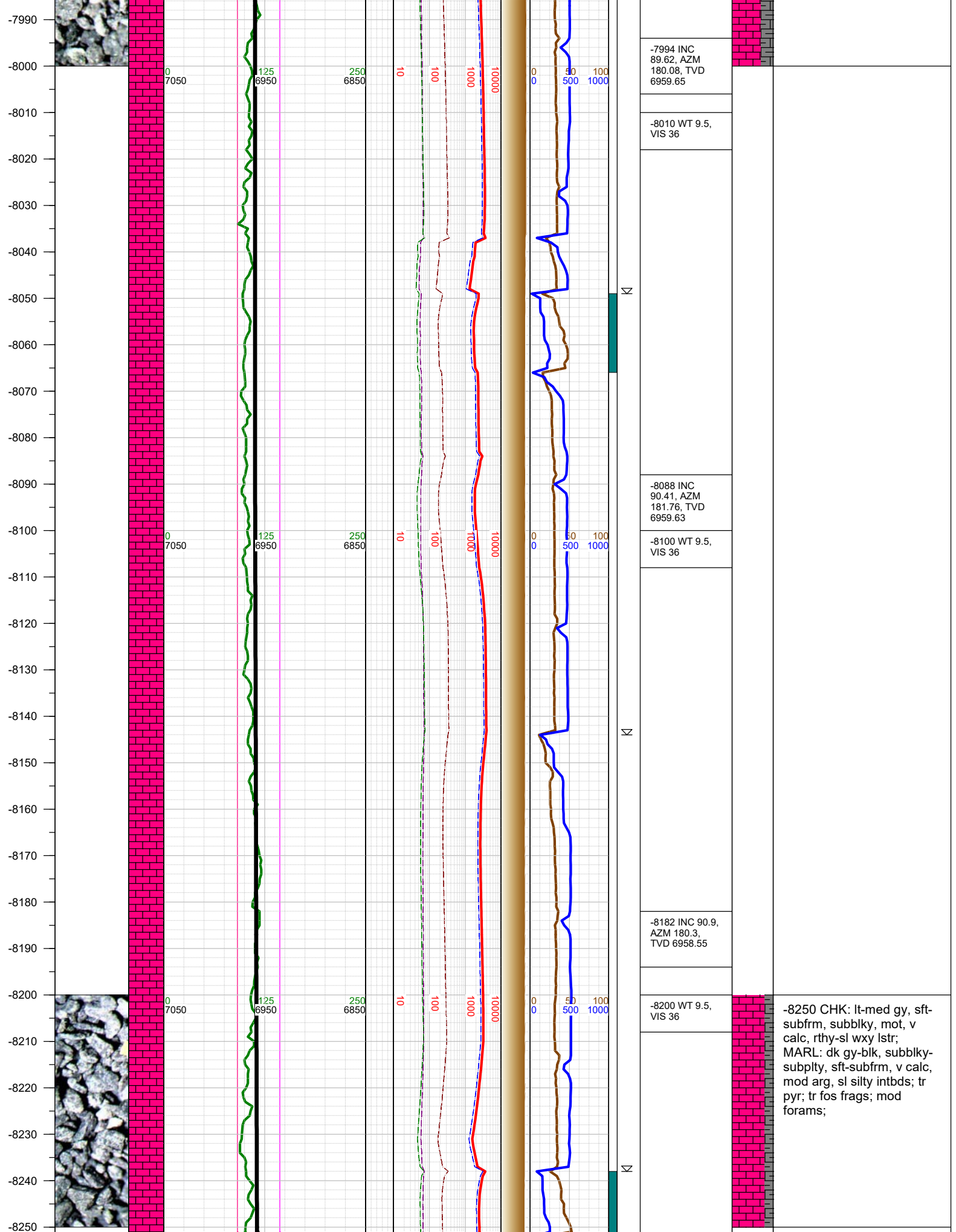


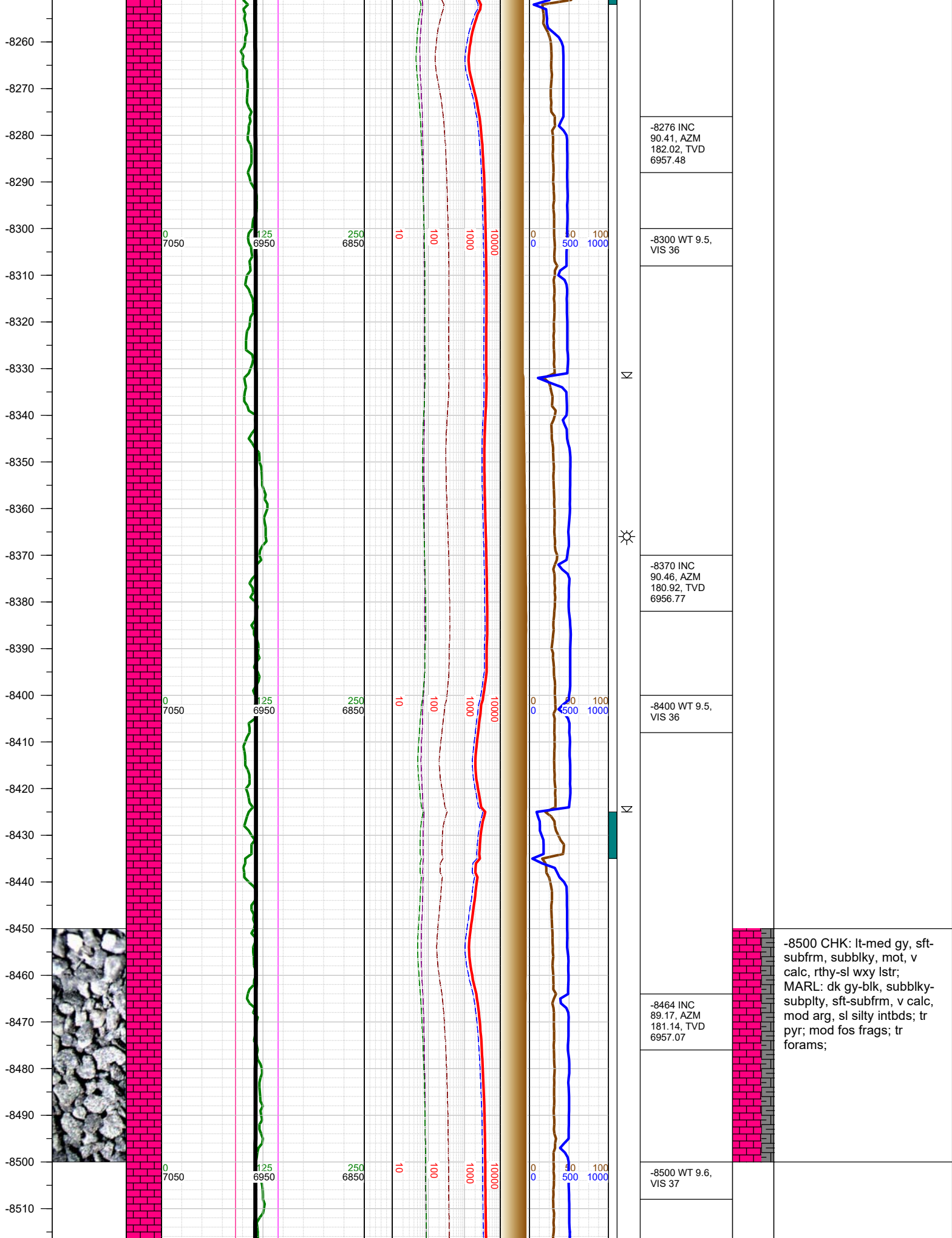




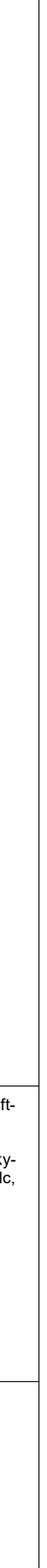
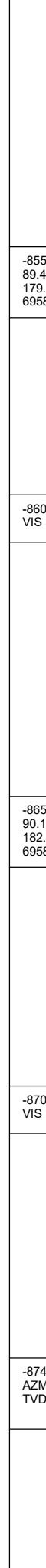
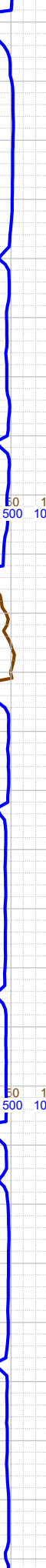
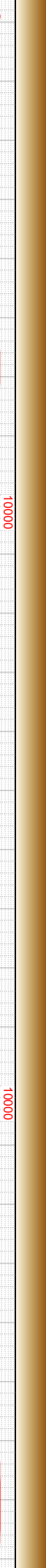
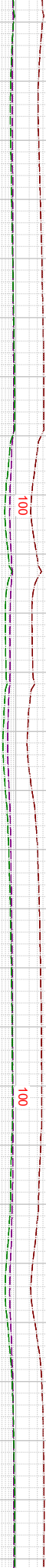
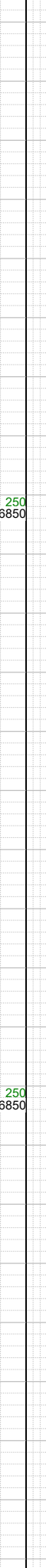
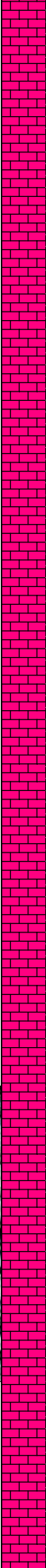
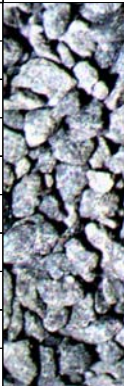








-8520
-8530
-8540
-8550
-8560
-8570
-8580
-8590
-8600
-8610
-8620
-8630
-8640
-8650
-8660
-8670
-8680
-8690
-8700
-8710
-8720
-8730
-8740
-8750
-8760
-8770
-8780



-8558 INC
89.48, AZM
179.82, TVD
6958.18

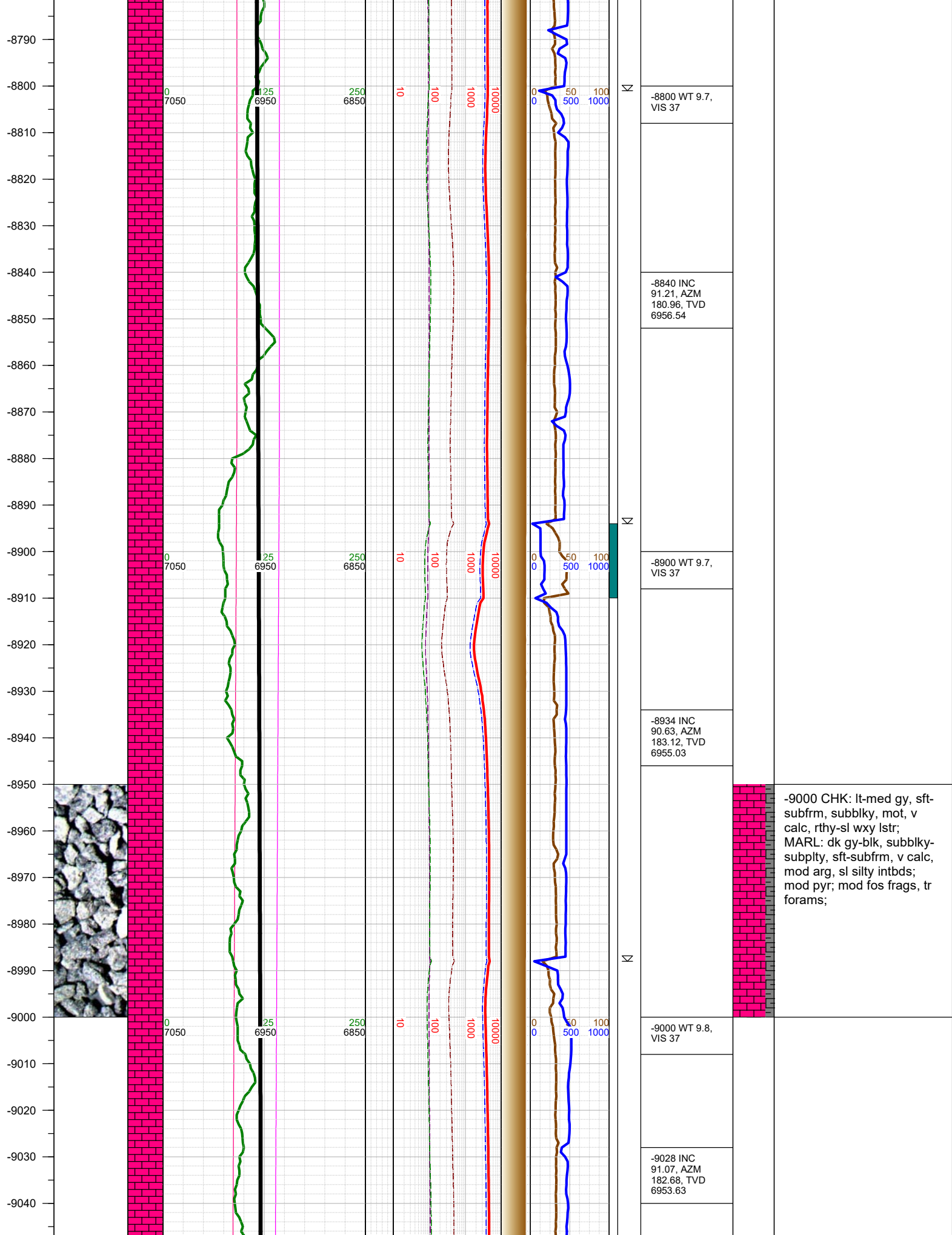
-8600 WT 9.6,
VIS 37

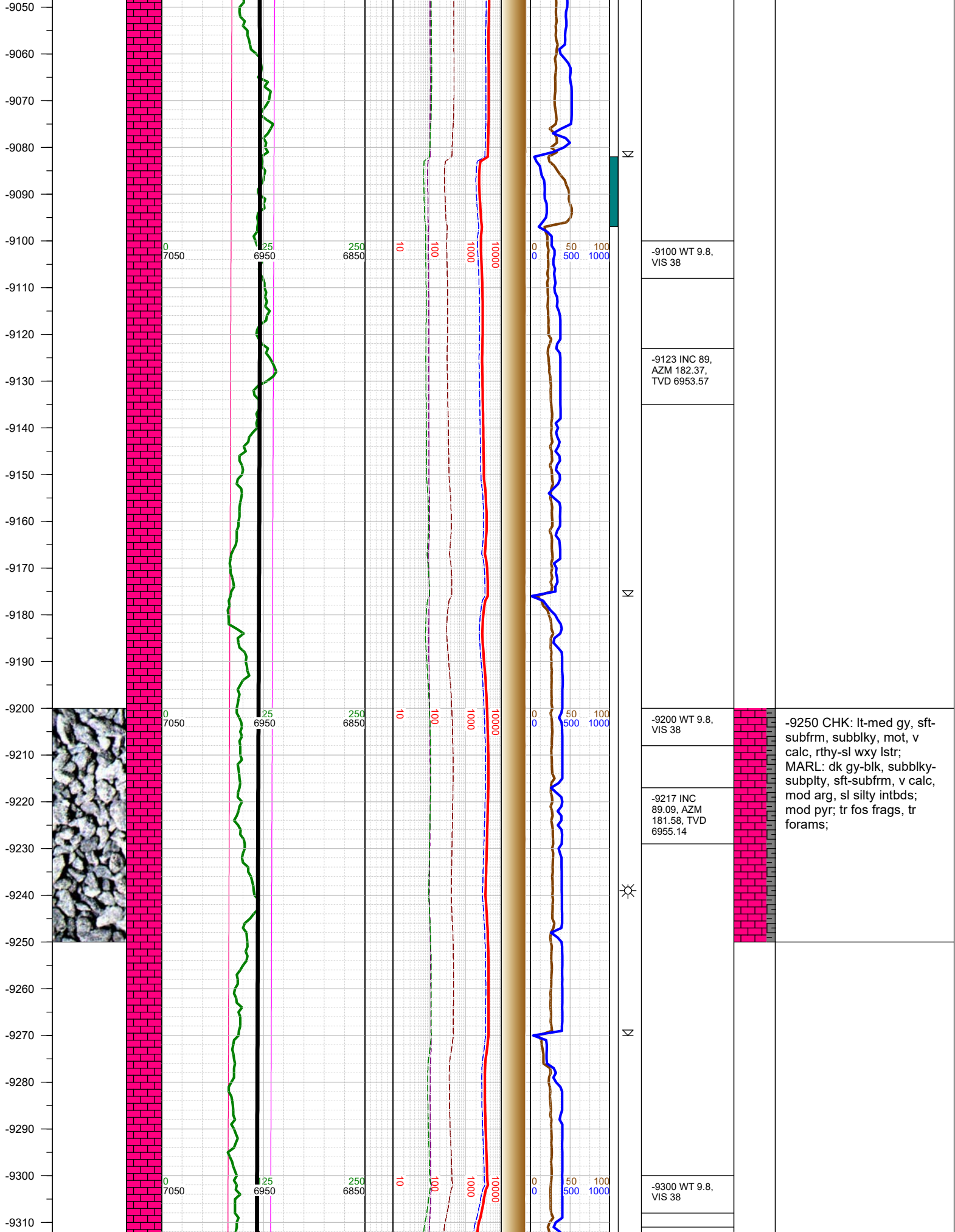
-8651 INC
90.15, AZM
182.2, TVD
6958.48

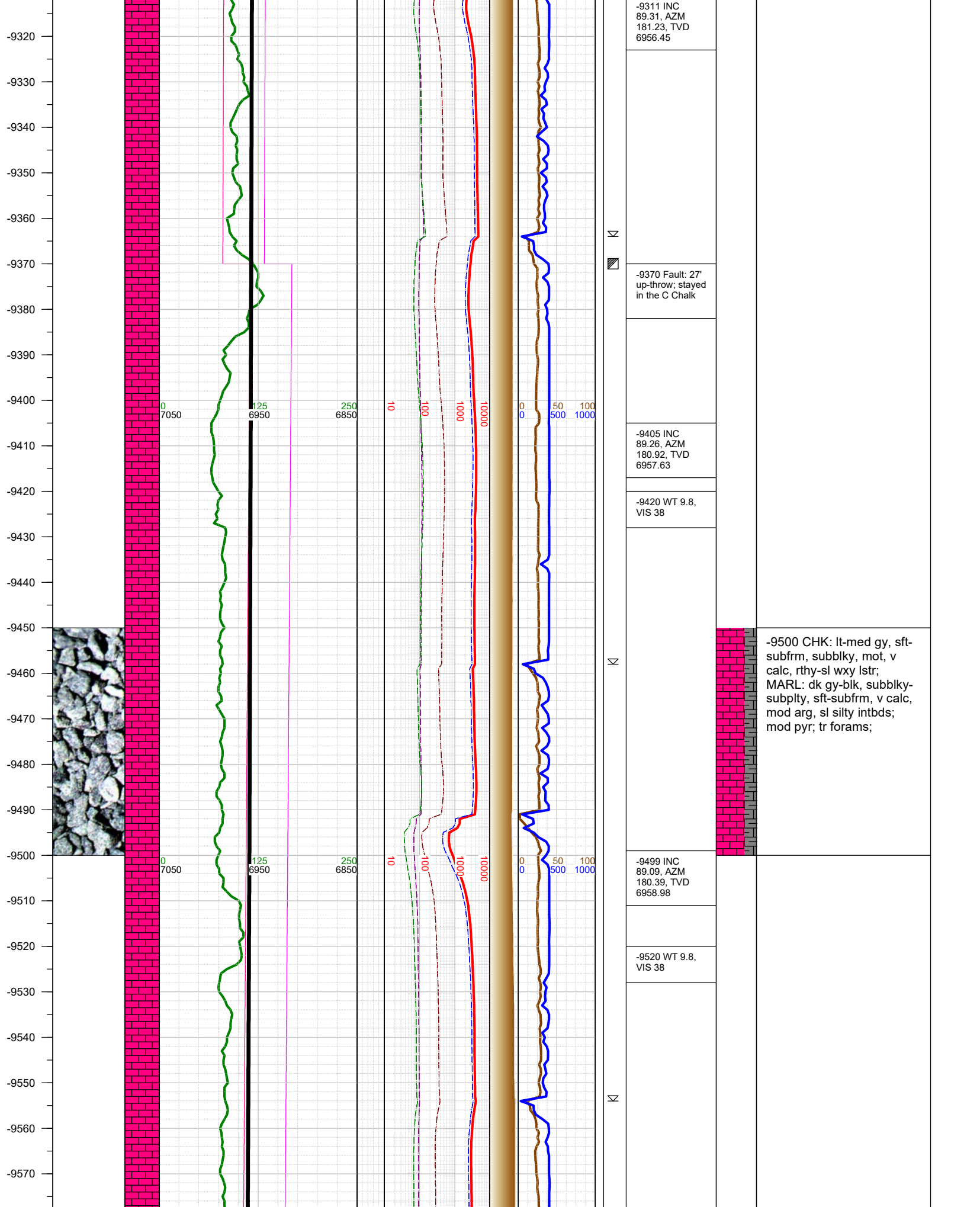
-8700 WT 9.7,
VIS 37

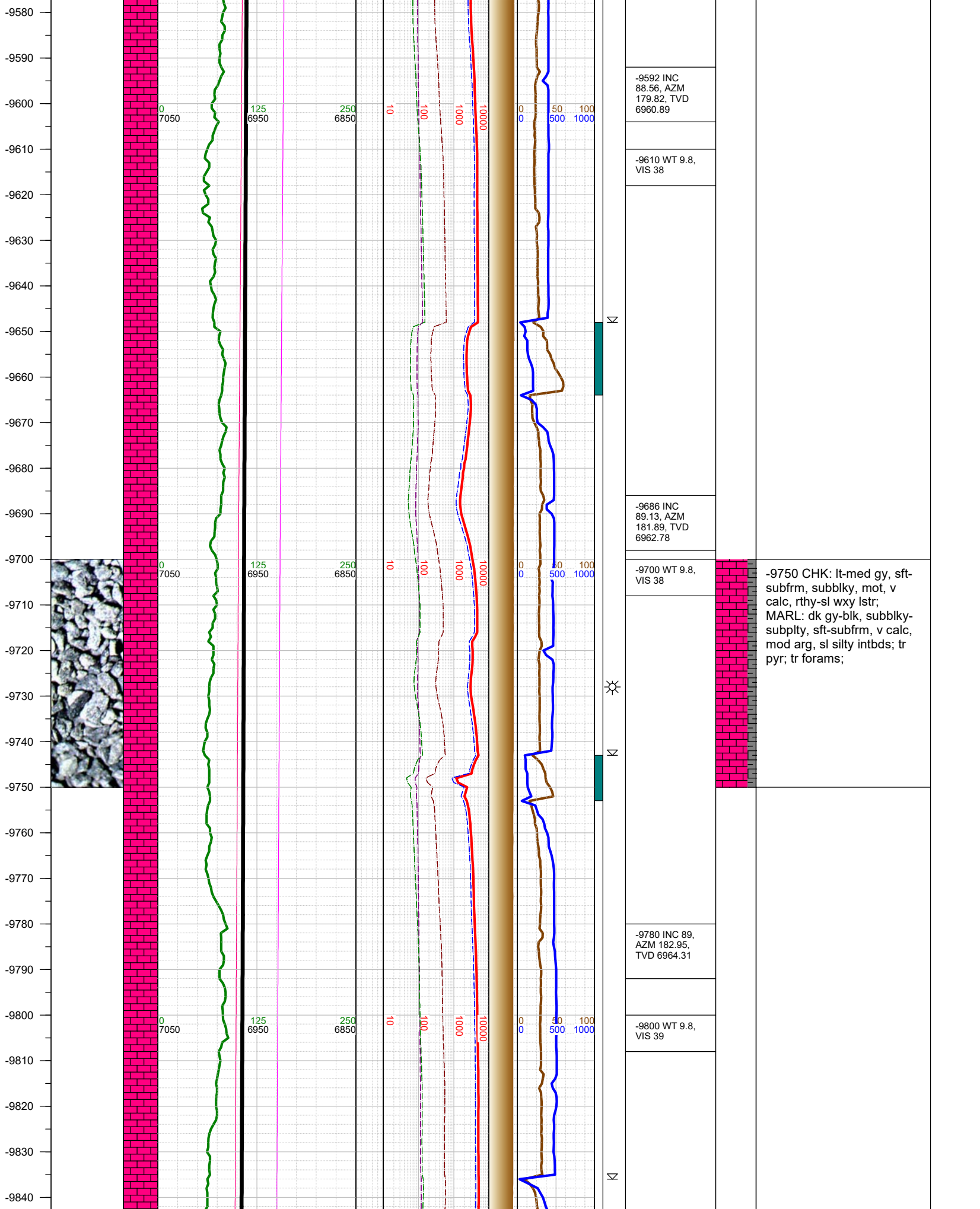
-8746 INC 90.5,
AZM 181.89,
TVD 6957.94

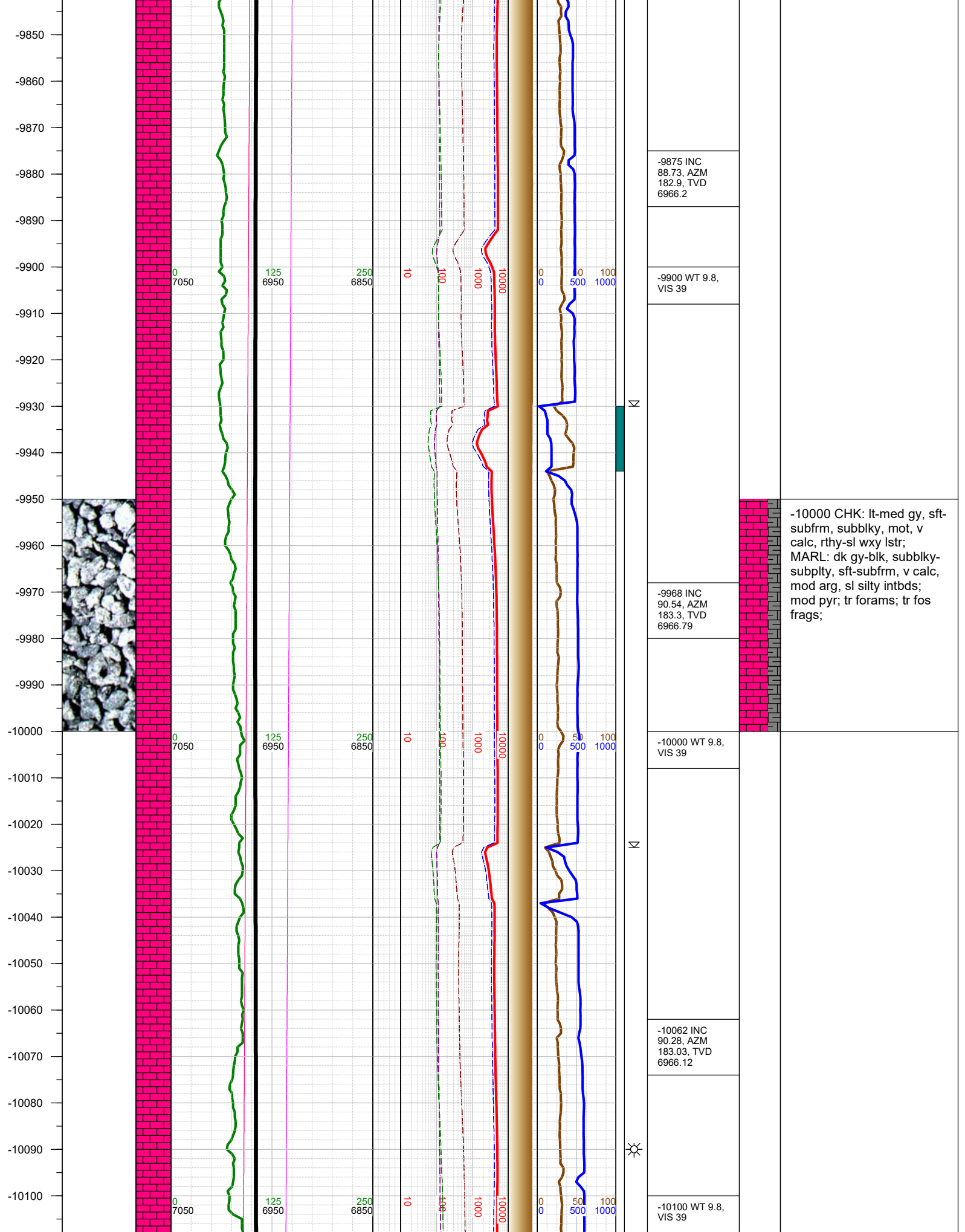
-8750 CHK: lt-med gy, sft-
subfrm, subblky, mot, v
calc, rthy-sl wxy lstr;
MARL: dk gy-blk, subblky-
subply, sft-subfrm, v calc,
mod arg, sl silty intbds;
mod pyr; tr forams;

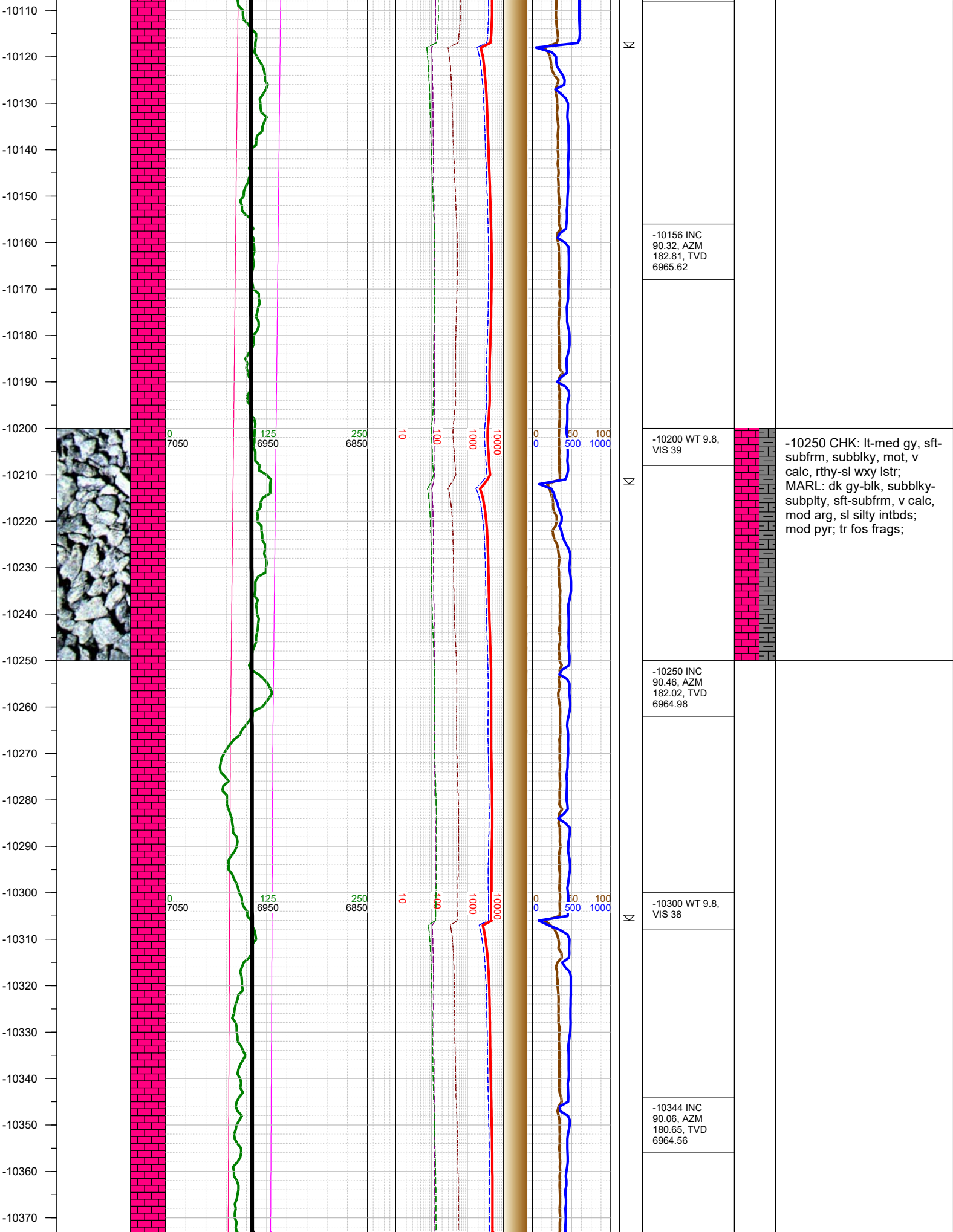


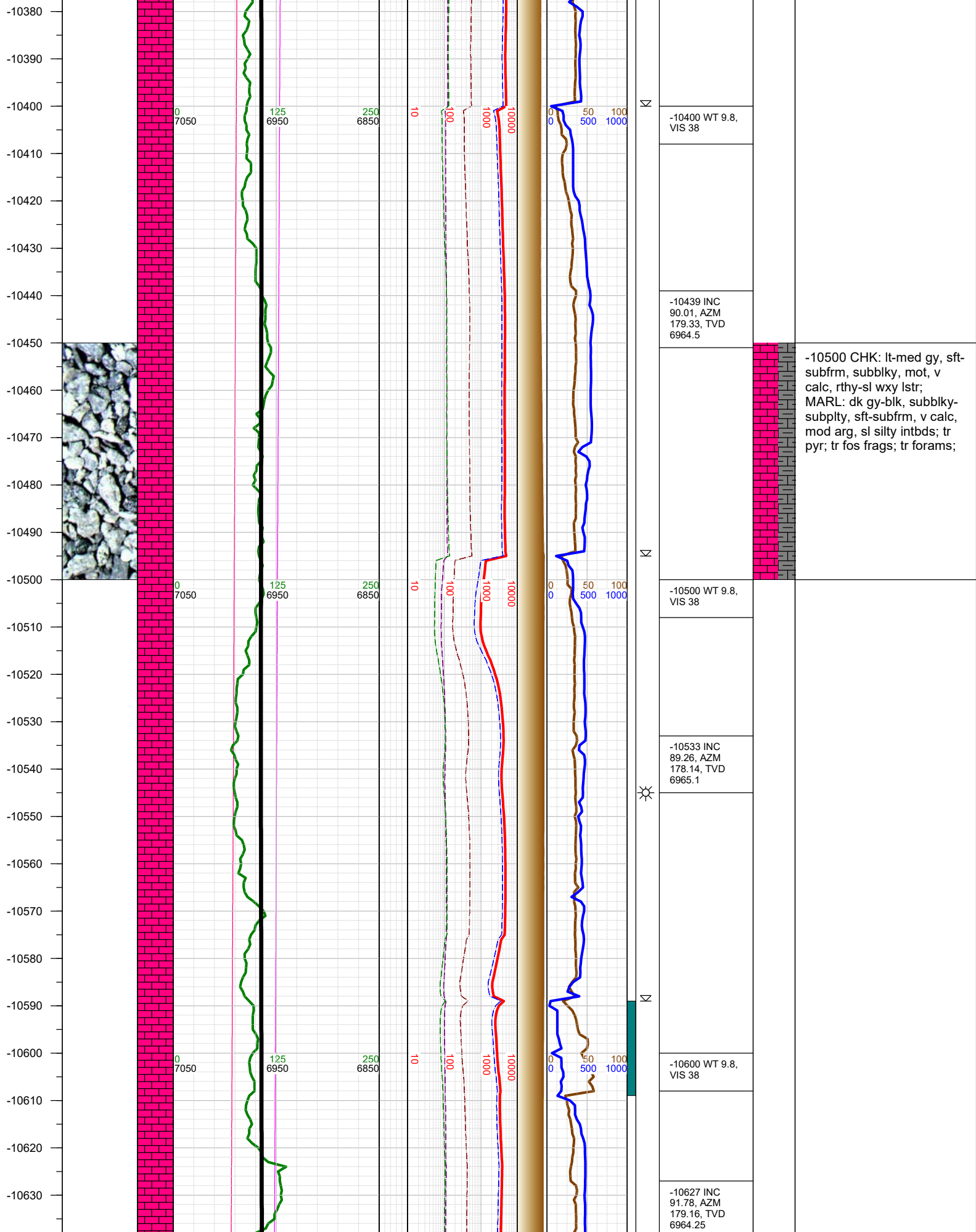


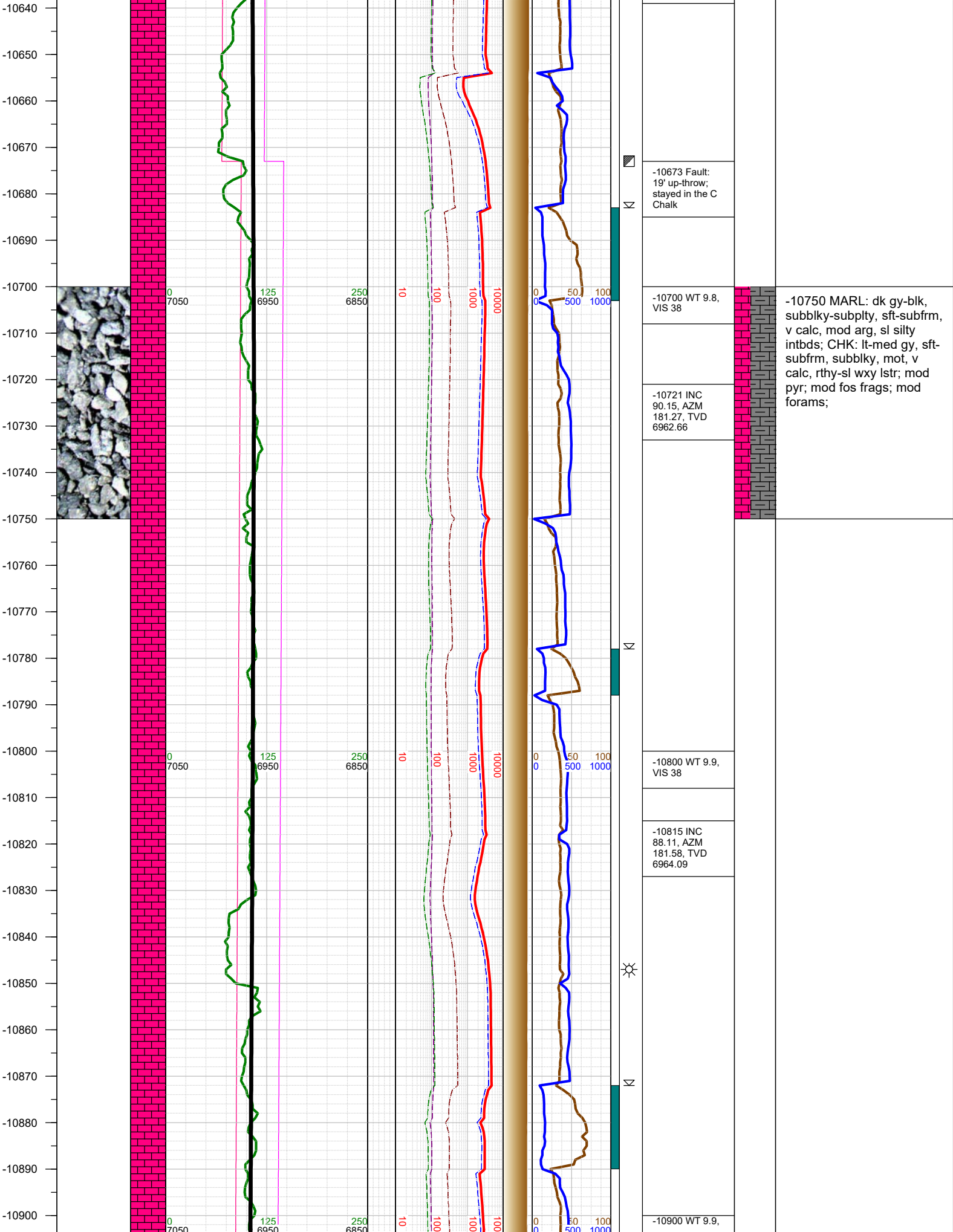


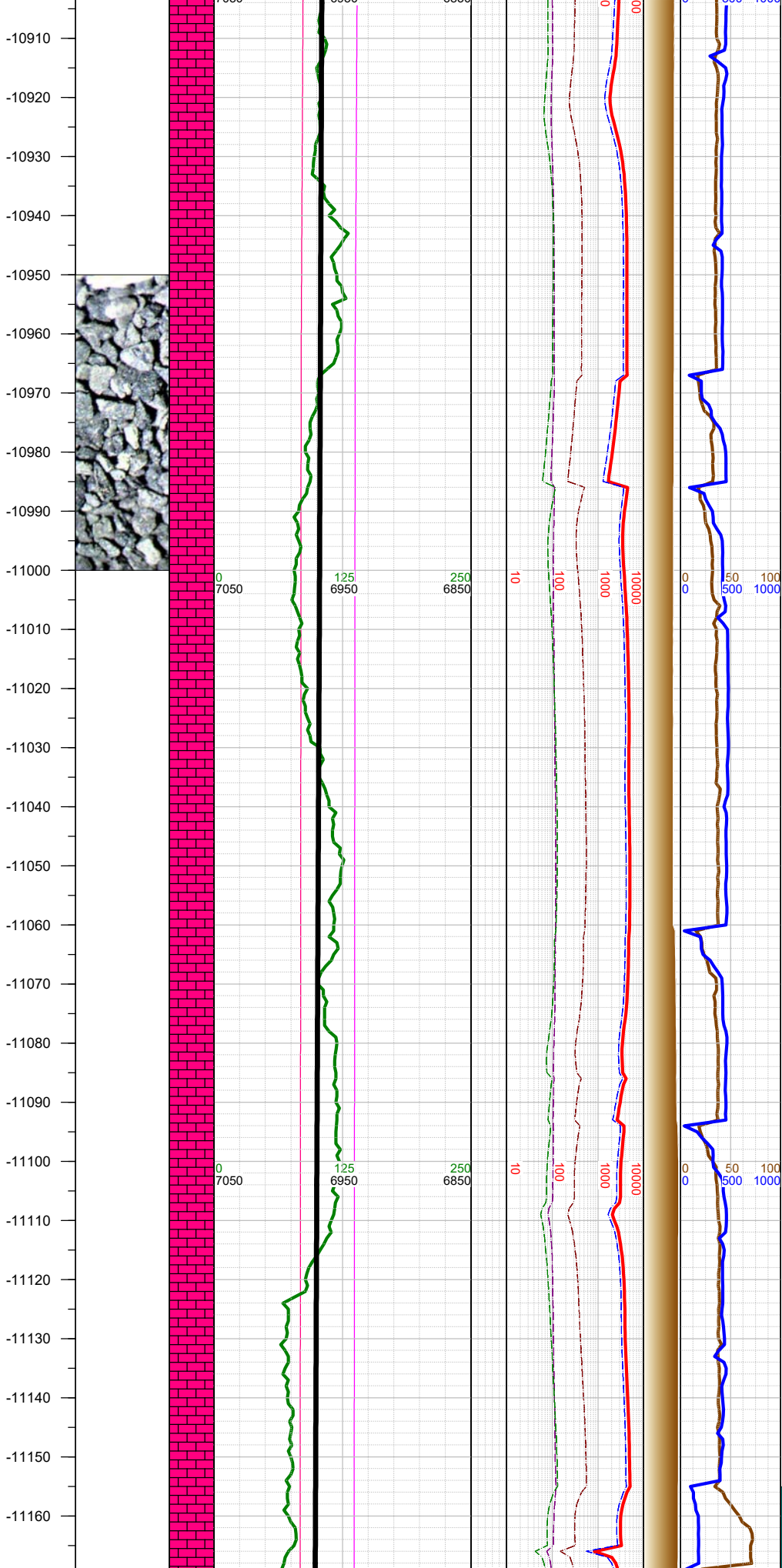




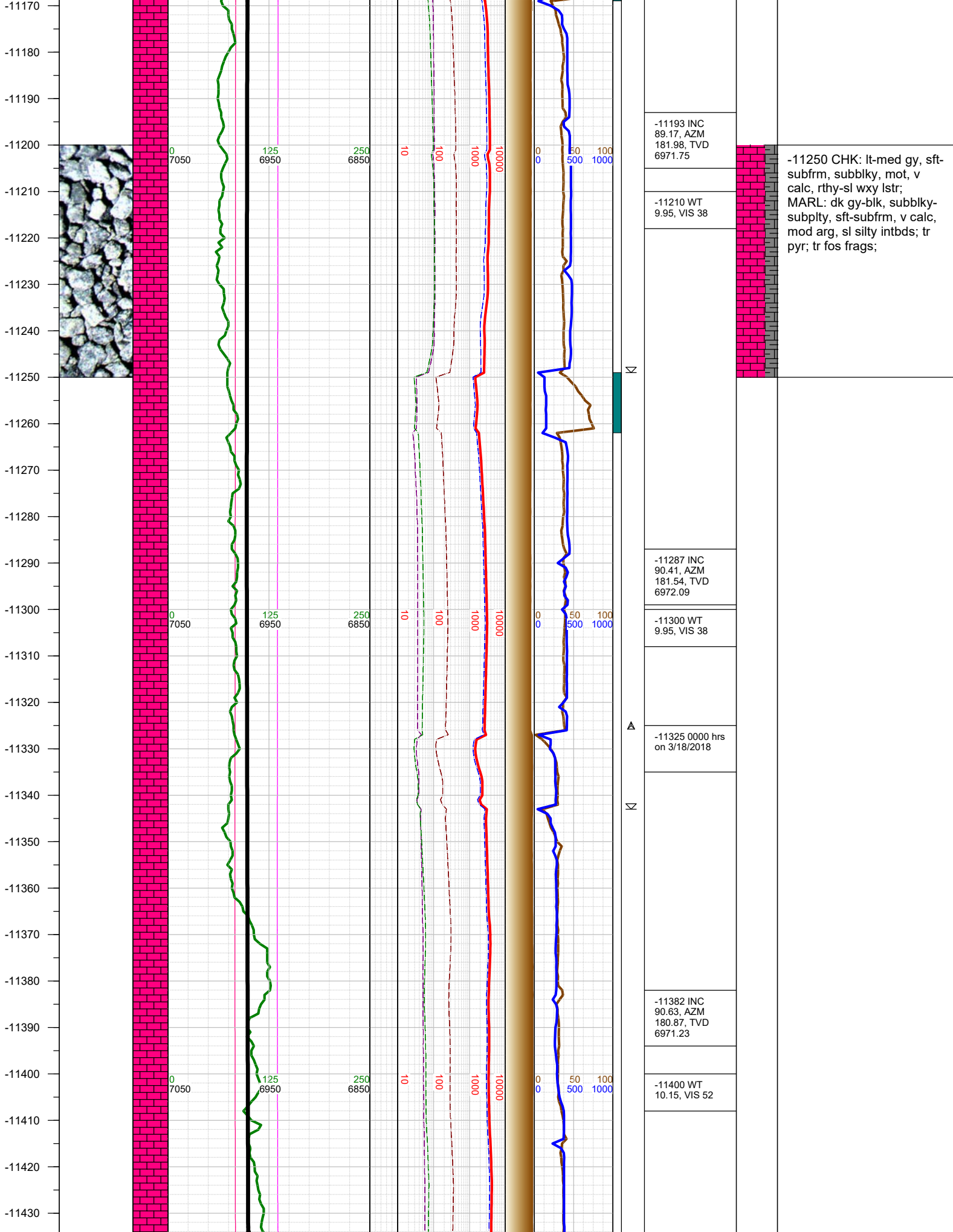




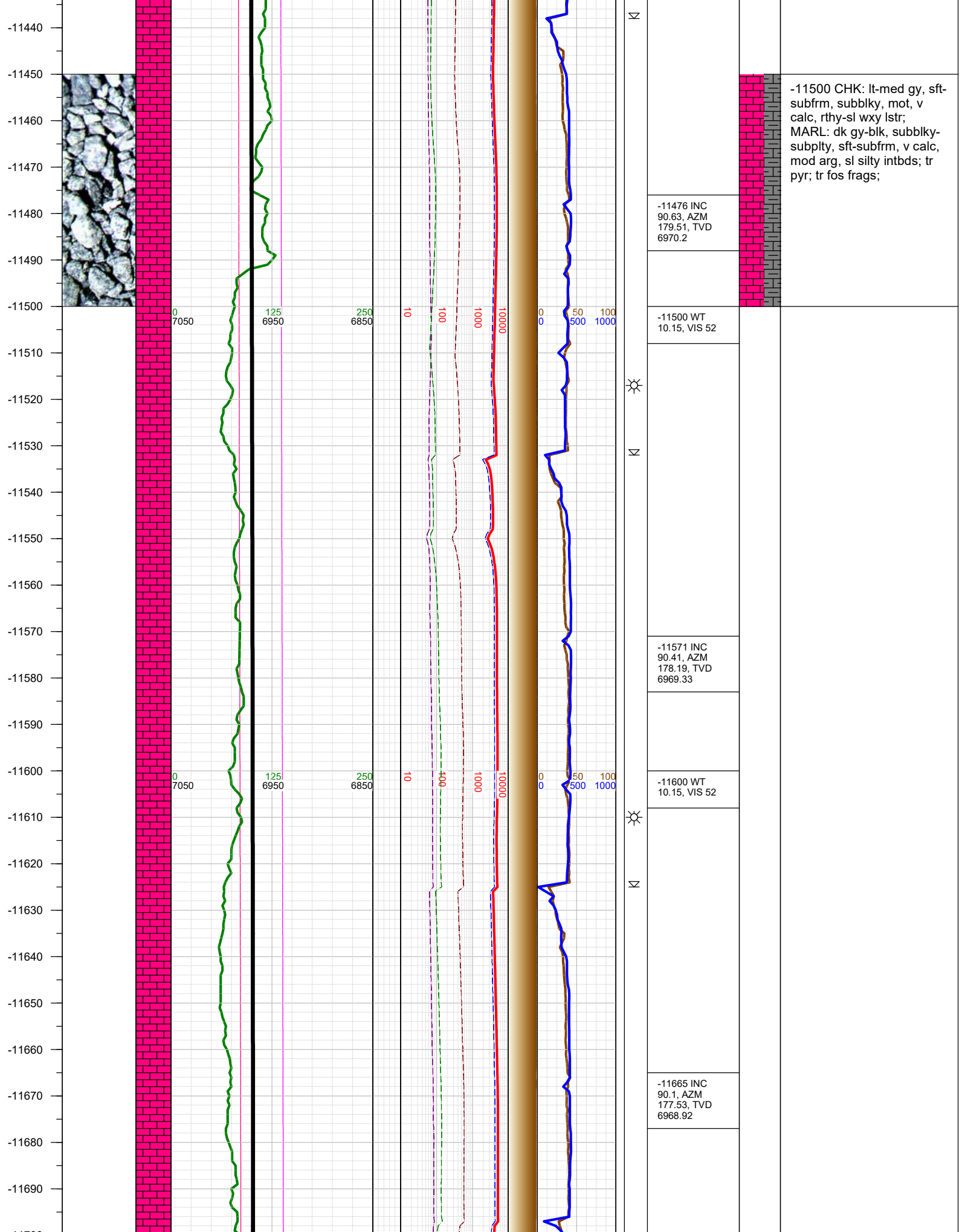


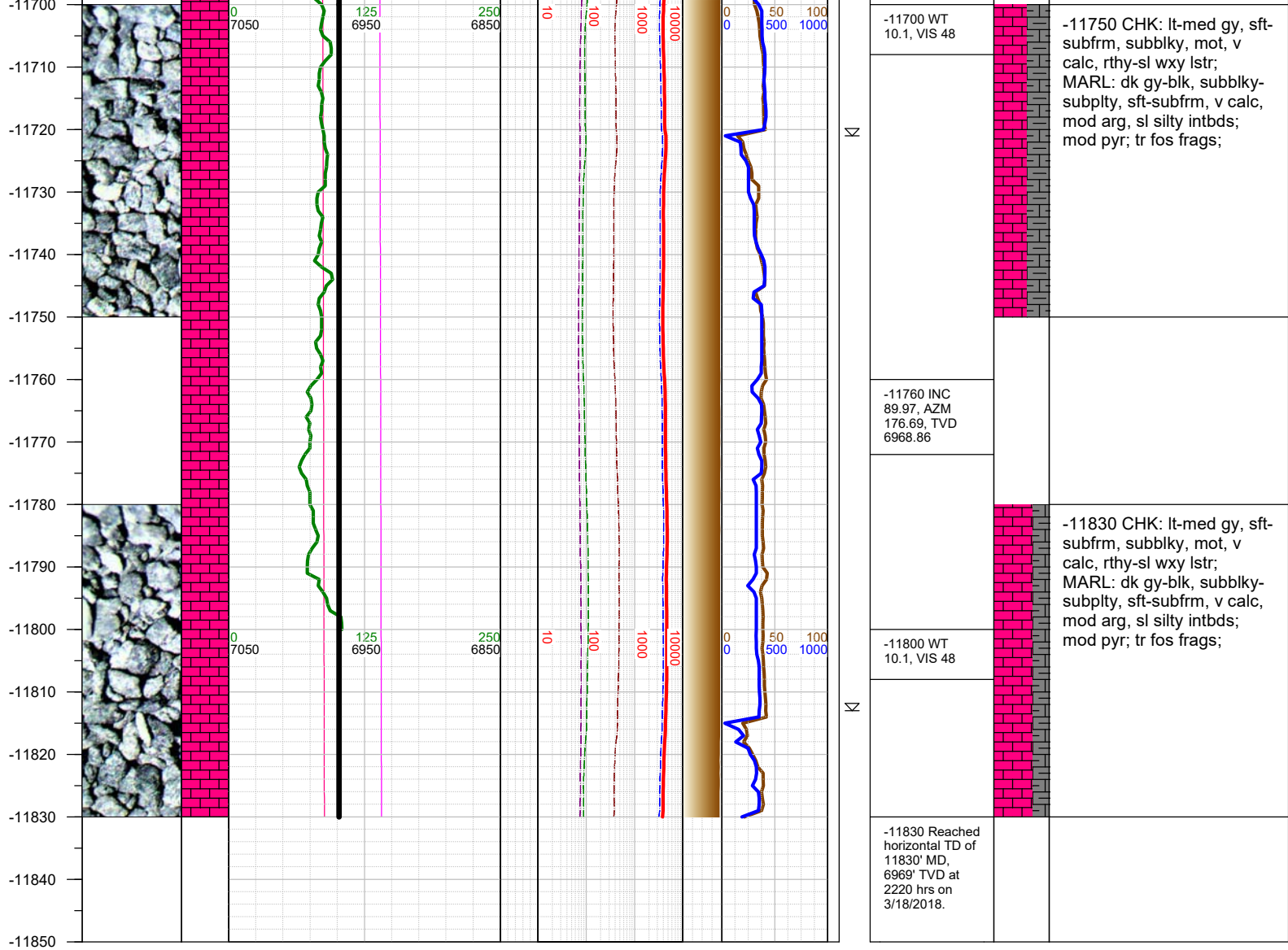


VIS 38	-10910 INC 89.13, AZM 184.31, TVD 6966.38		
N			-11000 CHK: lt-med gy, sft-subfrm, subblky, mot, v calc, rthy-sl wxy lstr; MARL: dk gy-blk, subblky-subply, sft-subfrm, v calc, mod arg, sl silty intbds; mod pyr; mod fos frags; mod forams;
N	-11004 INC 88.86, AZM 182.42, TVD 6968.03		
N	-11020 WT 9.9, VIS 38		
N	-11099 INC 88.73, AZM 180.74, TVD 6970.02		
N	-11120 WT 9.9, VIS 38		
N			



-11250 CHK: lt-med gy, sft-subfrm, subblky, mot, v calc, rthy-sl wxy lstr; MARL: dk gy-blk, subblky-subply, sft-subfrm, v calc, mod arg, sl silty intbds; tr pyr; tr fos frags;





TOTAL DEPTH = 11830'

Thank you for using Earth Science Agency