

OPERATOR: **Extraction Oil & Gas**

WELL NAME: **WS Sunrise 4-5-5**

FIELD NAME: DJ Basin - Wattenberg

DRILLING RIG: Patterson 346

API #: 05-123-46049

LAT/LONG: 40.43718, -104.68368

SURFACE HOLE: SWSE S32-T6N-R65W, 251' FSL, 1668' FEL

BOTTOM HOLE: S5-T5N-R65W, 460' FSL, 990' FEL



Earth Science Agency, LLC

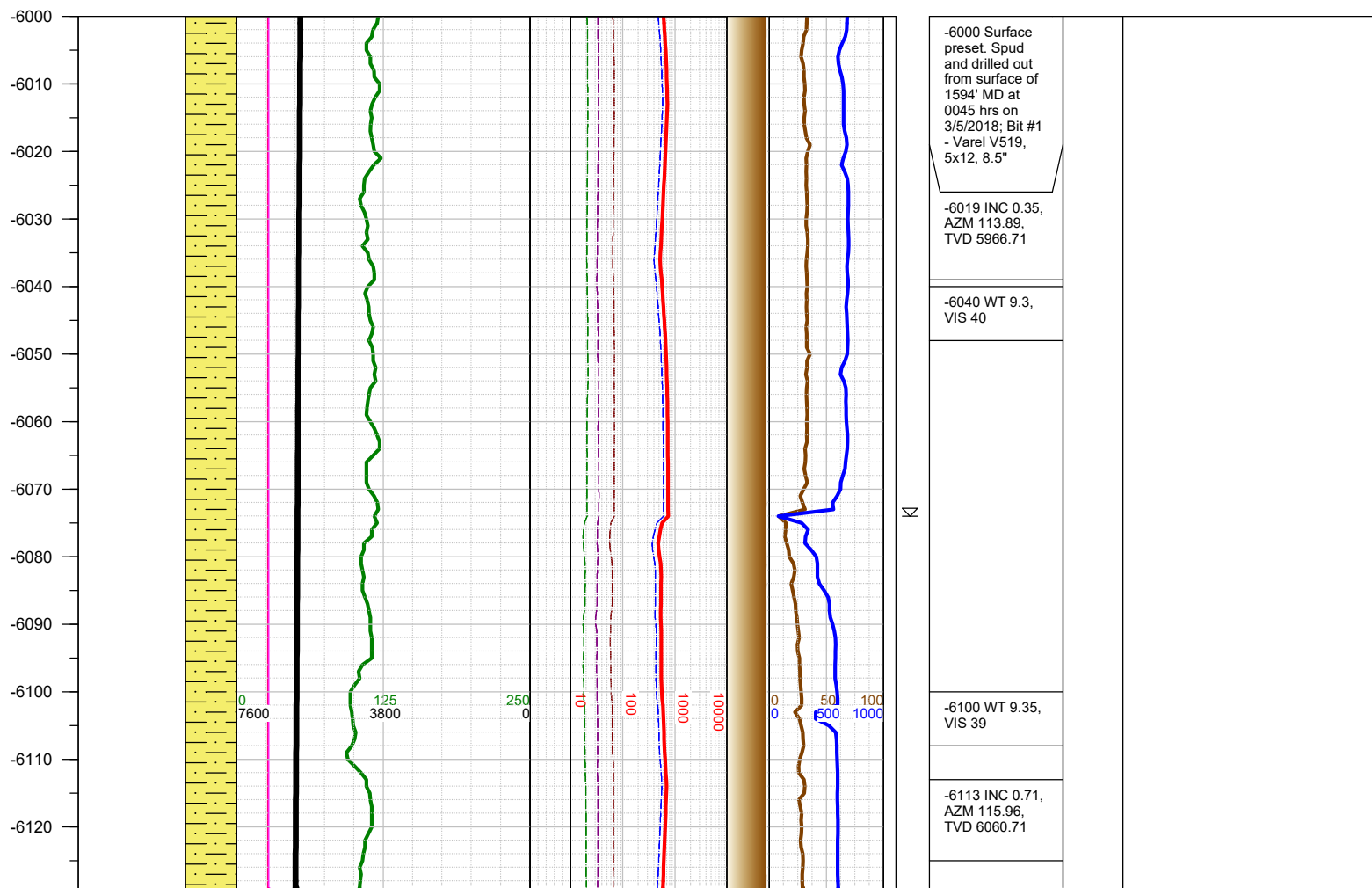
COUNTY: Weld
STATE: Colorado
GROUND ELEVATION: 4642'
KELLY BUSHING: 4667'
DRILLING FLUID: OBM
TVD VS. MD: 6792' / 11819'
SPUD DATE: March 5, 2018
TD DATE: March 6, 2018

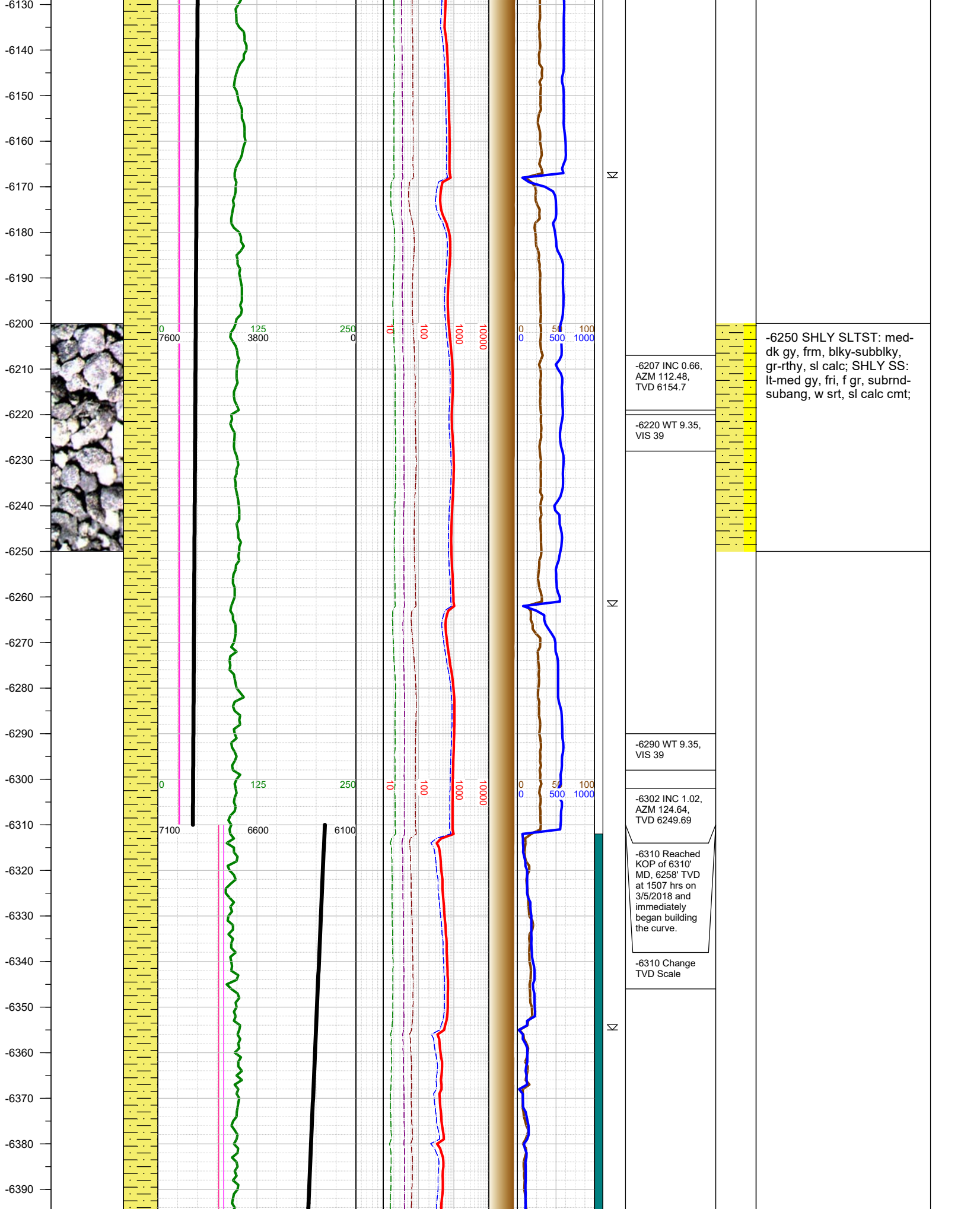
DEPTHS LOGGED: 6000' - 11819'
DATES LOGGED: March 5, 2018 - March 6, 2018
GEOLOGISTS: Ross Apodaca, Levi Heintzelman
SCALE: 5" = 100'

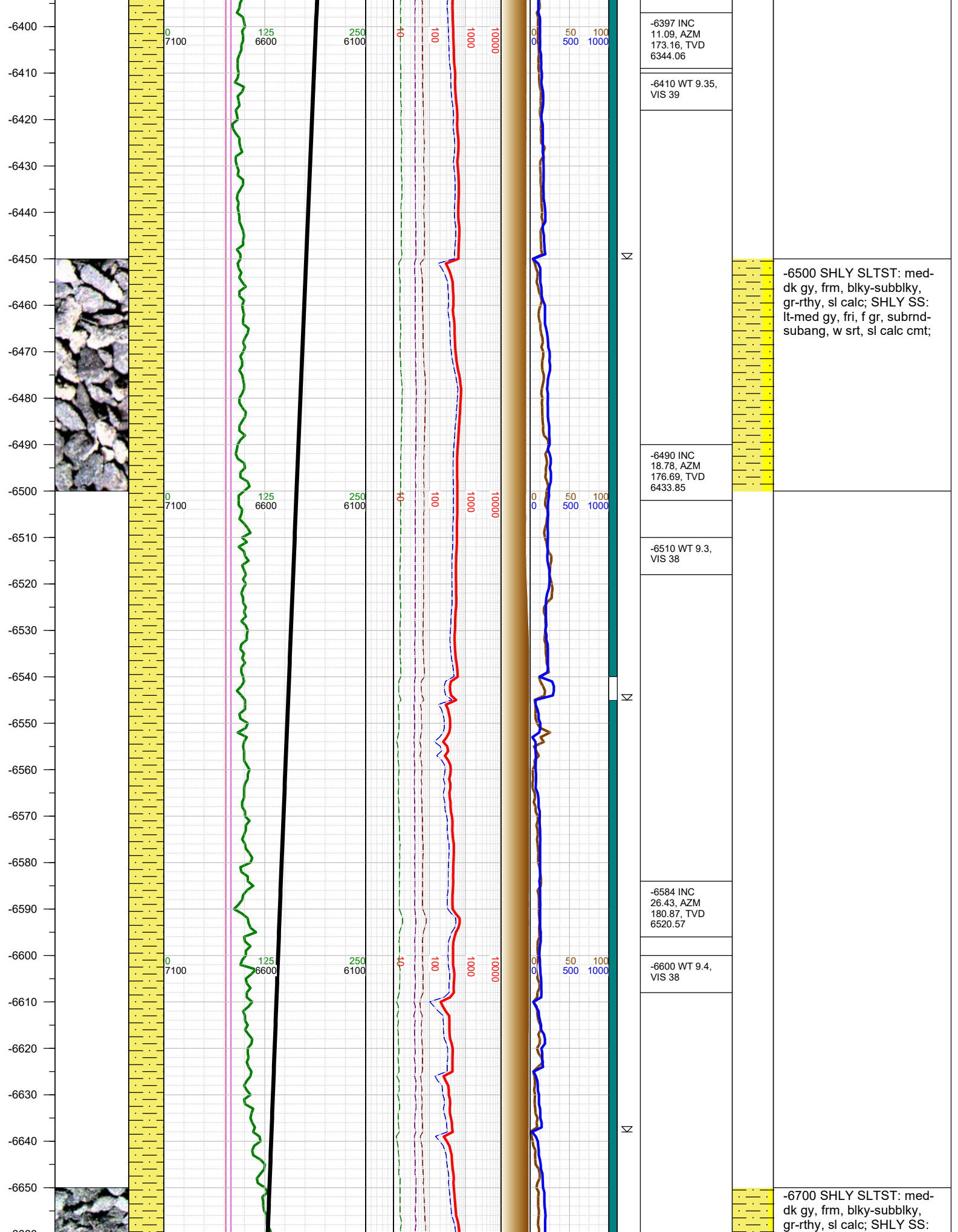
LEGEND

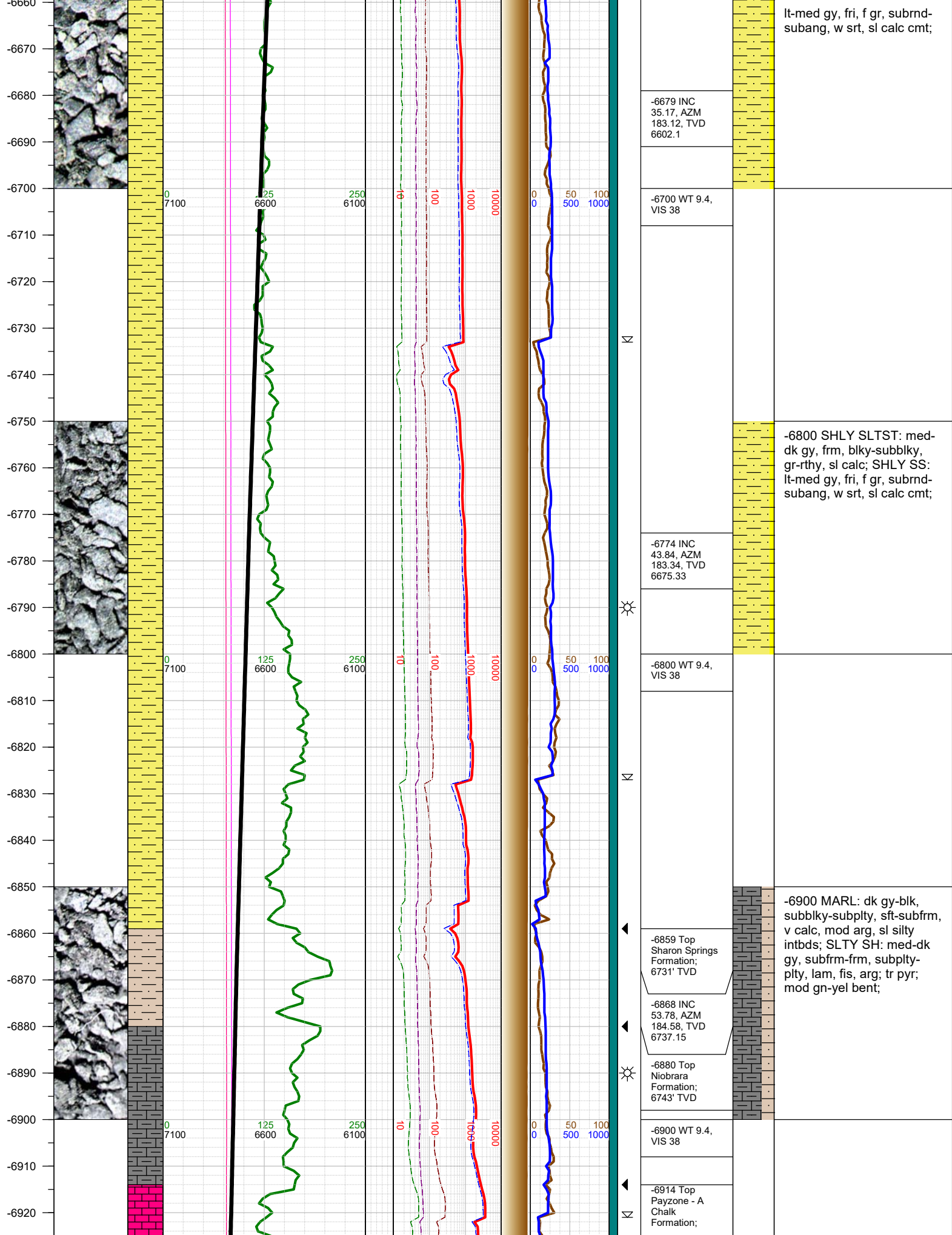


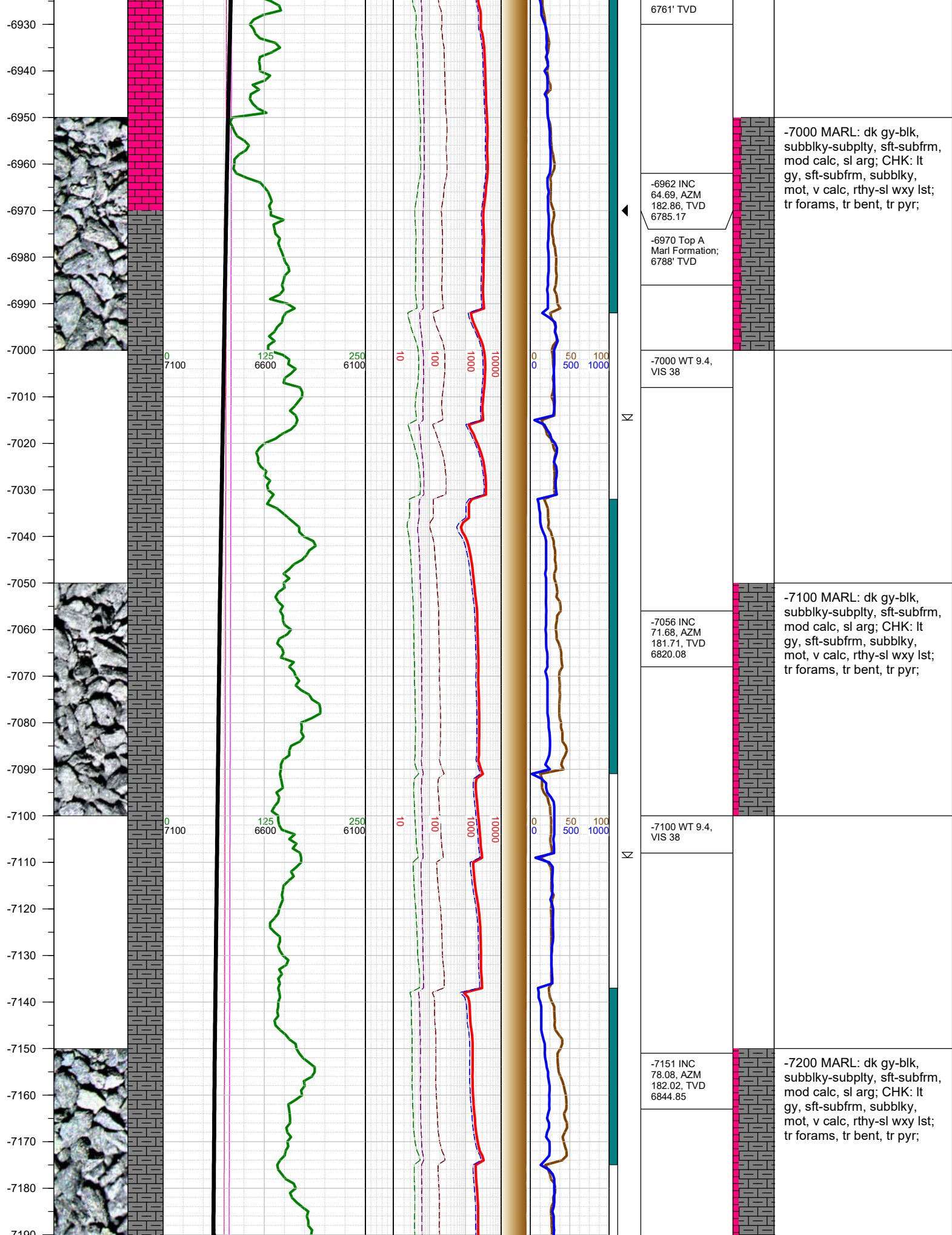
FORMATION CONNECTION MIDNIGHT NEW BIT GAS SHOW FAULT

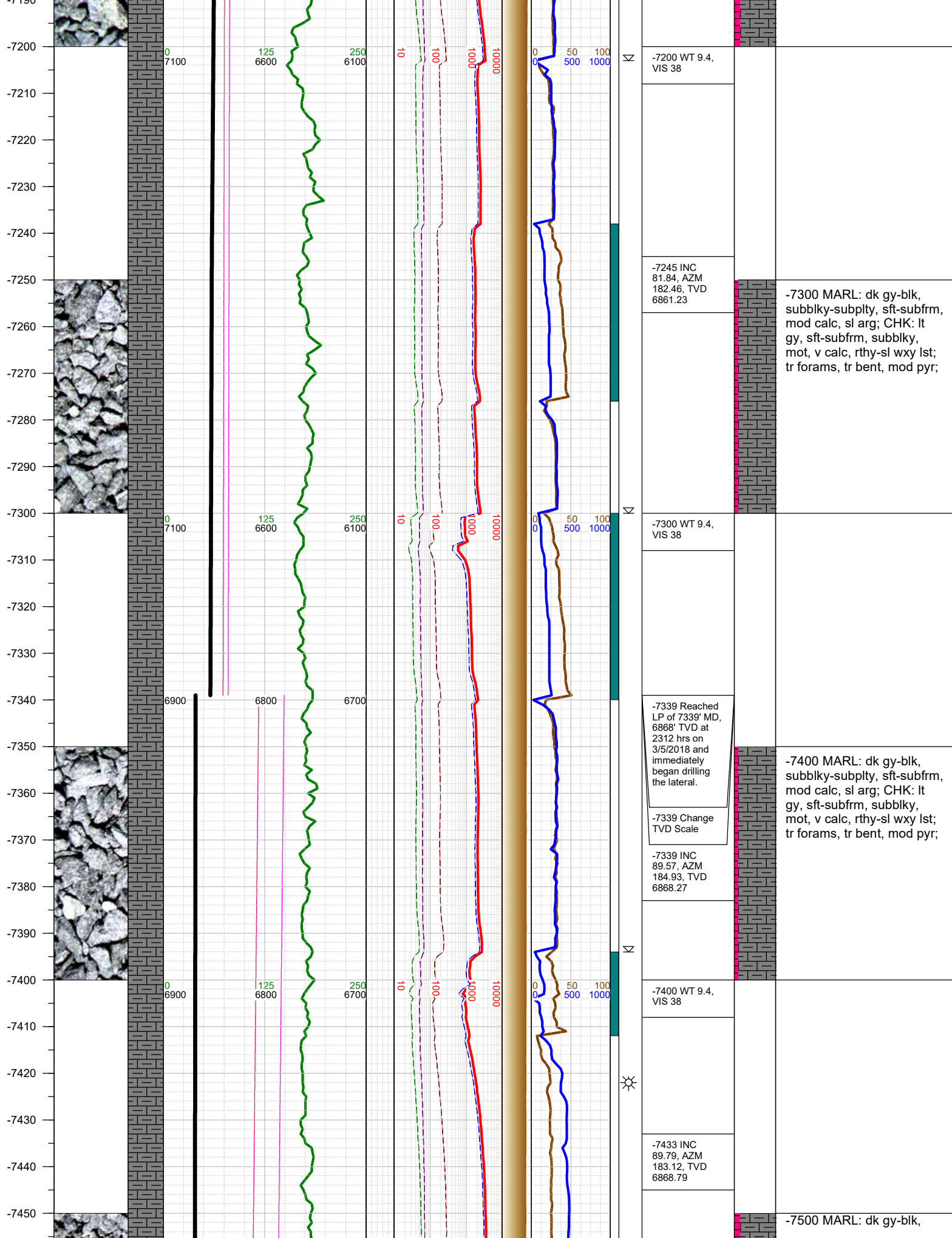


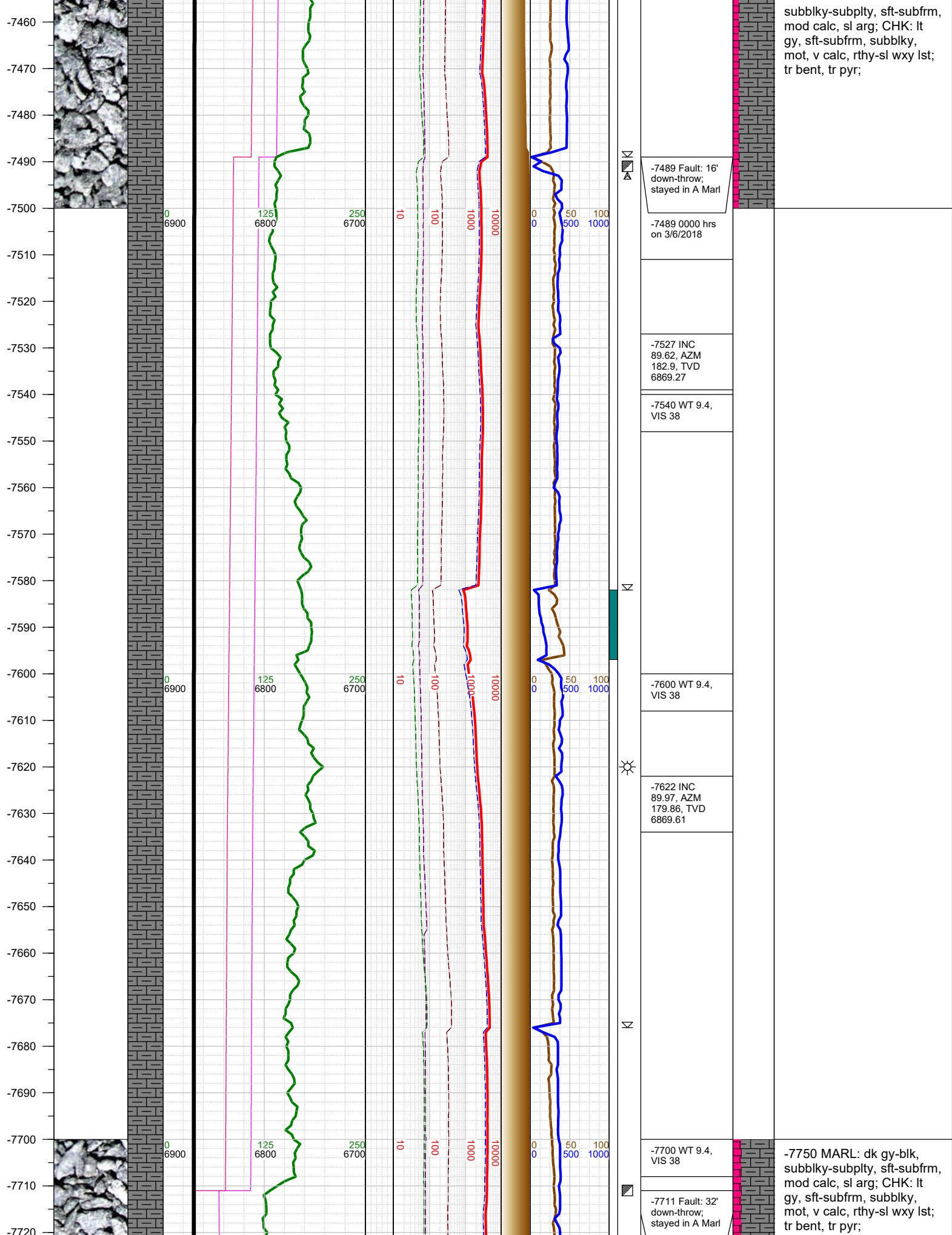


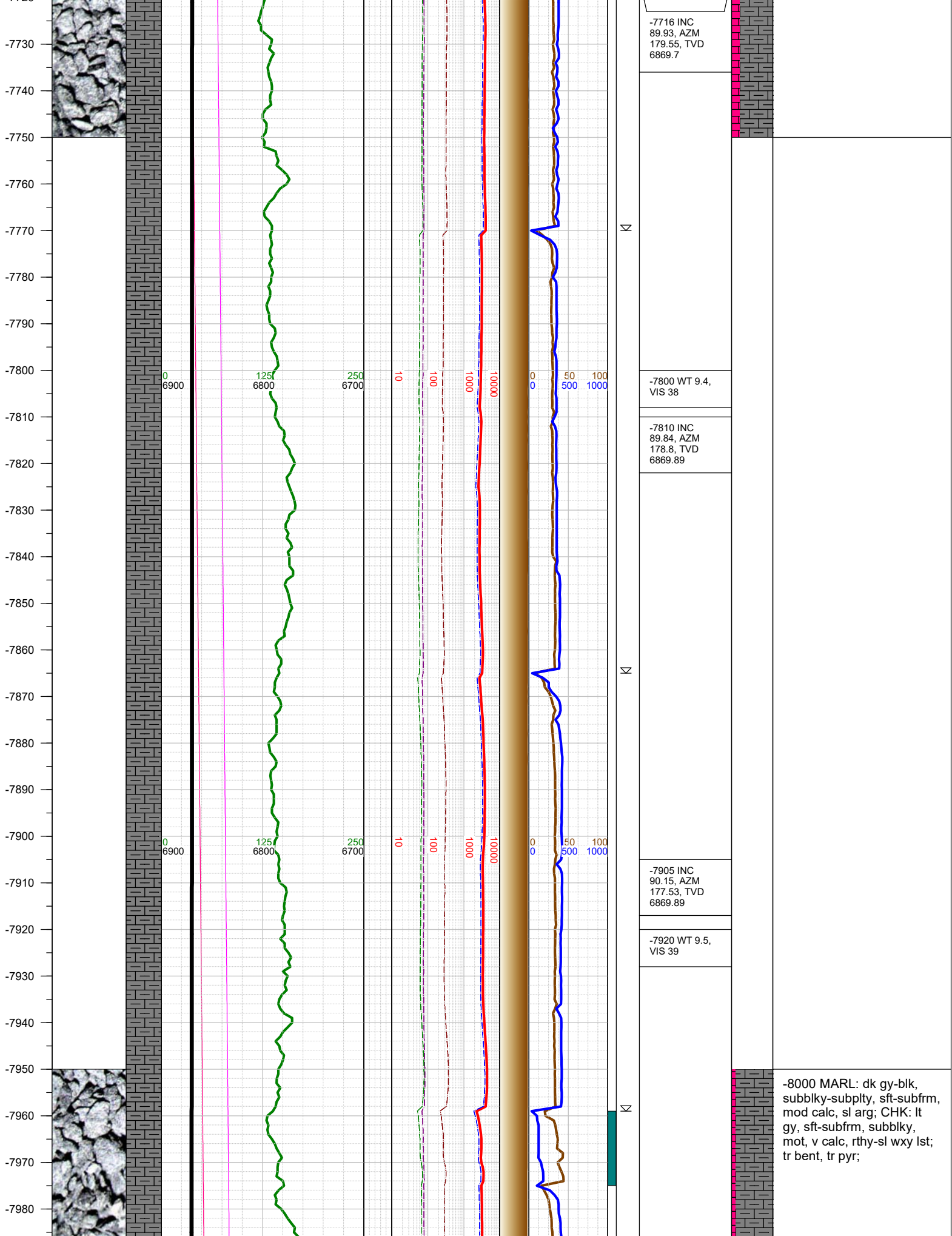


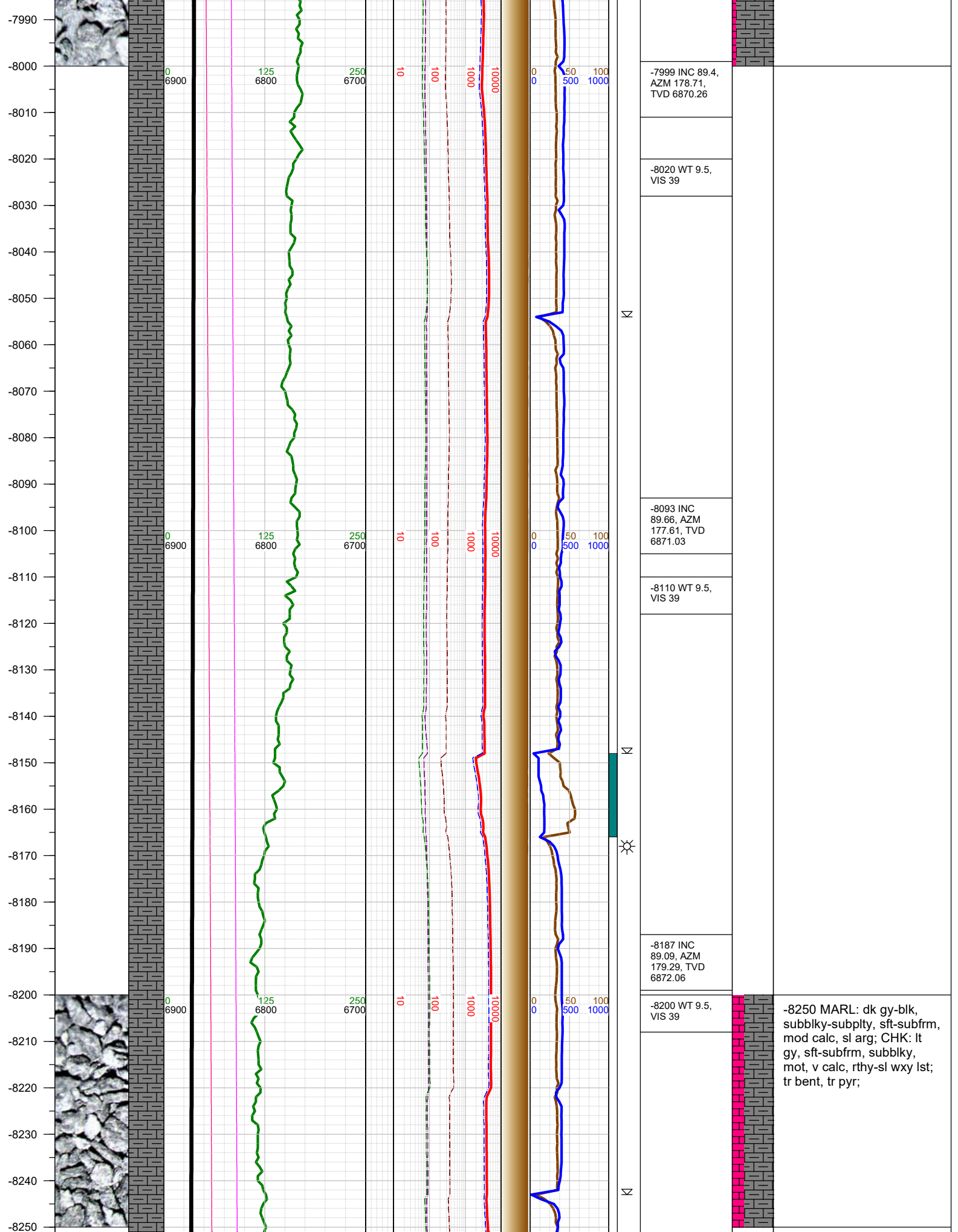


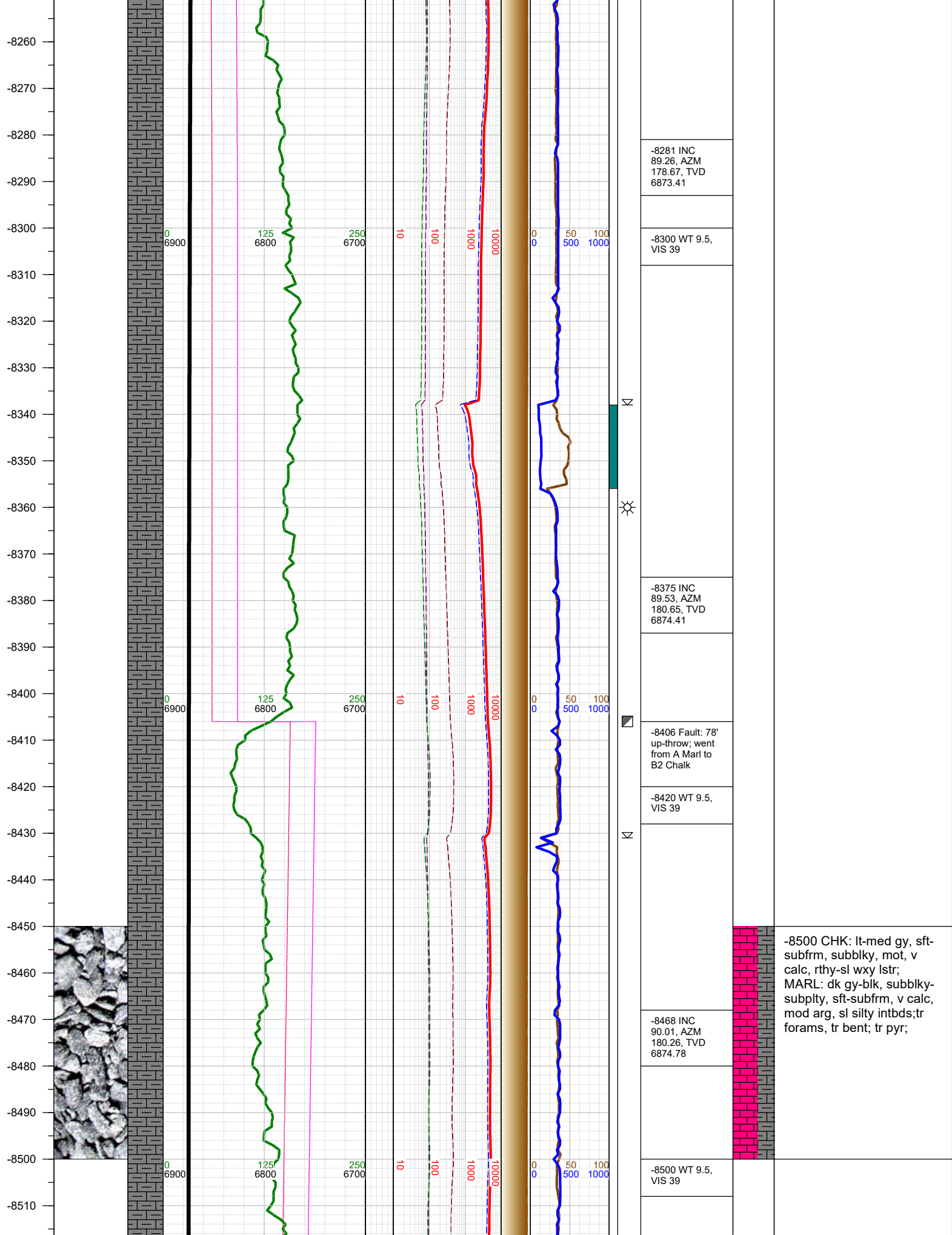




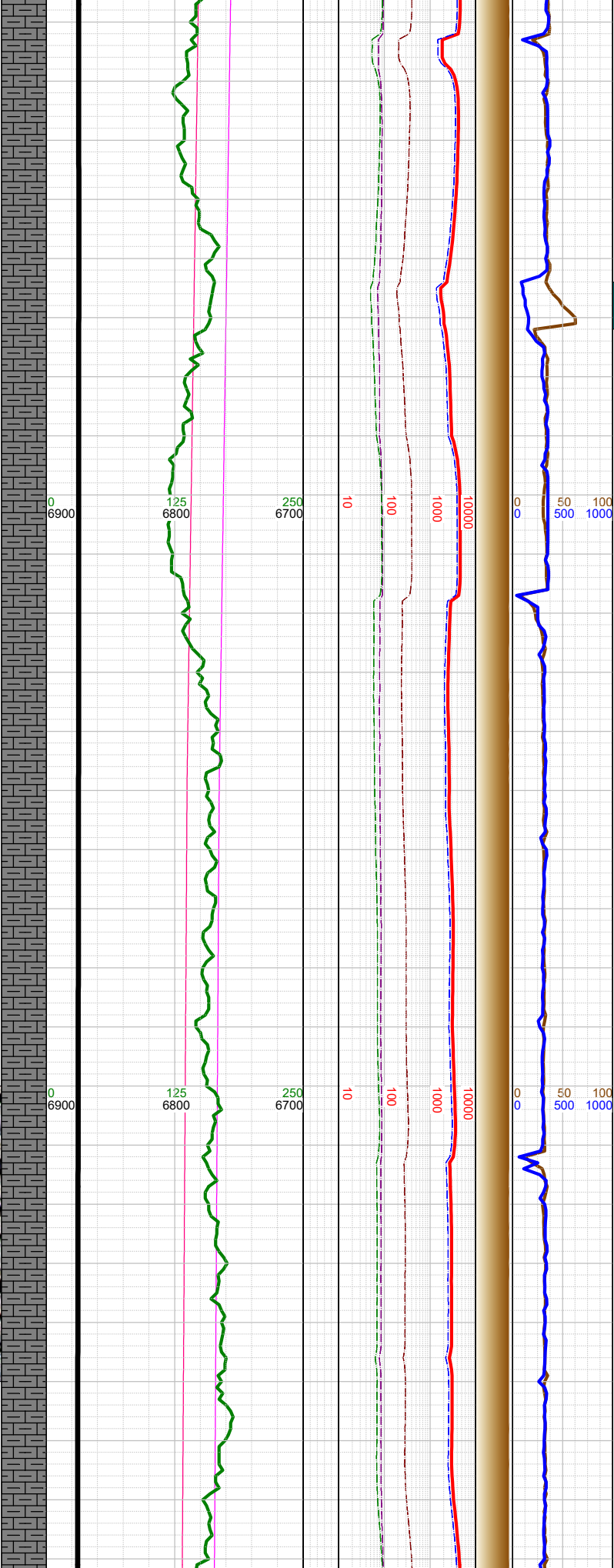








-8520
-8530
-8540
-8550
-8560
-8570
-8580
-8590
-8600
-8610
-8620
-8630
-8640
-8650
-8660
-8670
-8680
-8690
-8700
-8710
-8720
-8730
-8740
-8750
-8760
-8770
-8780



N

☀

N

N

☀

-8563 INC 90.1,
AZM 179.9,
TVD 6874.69

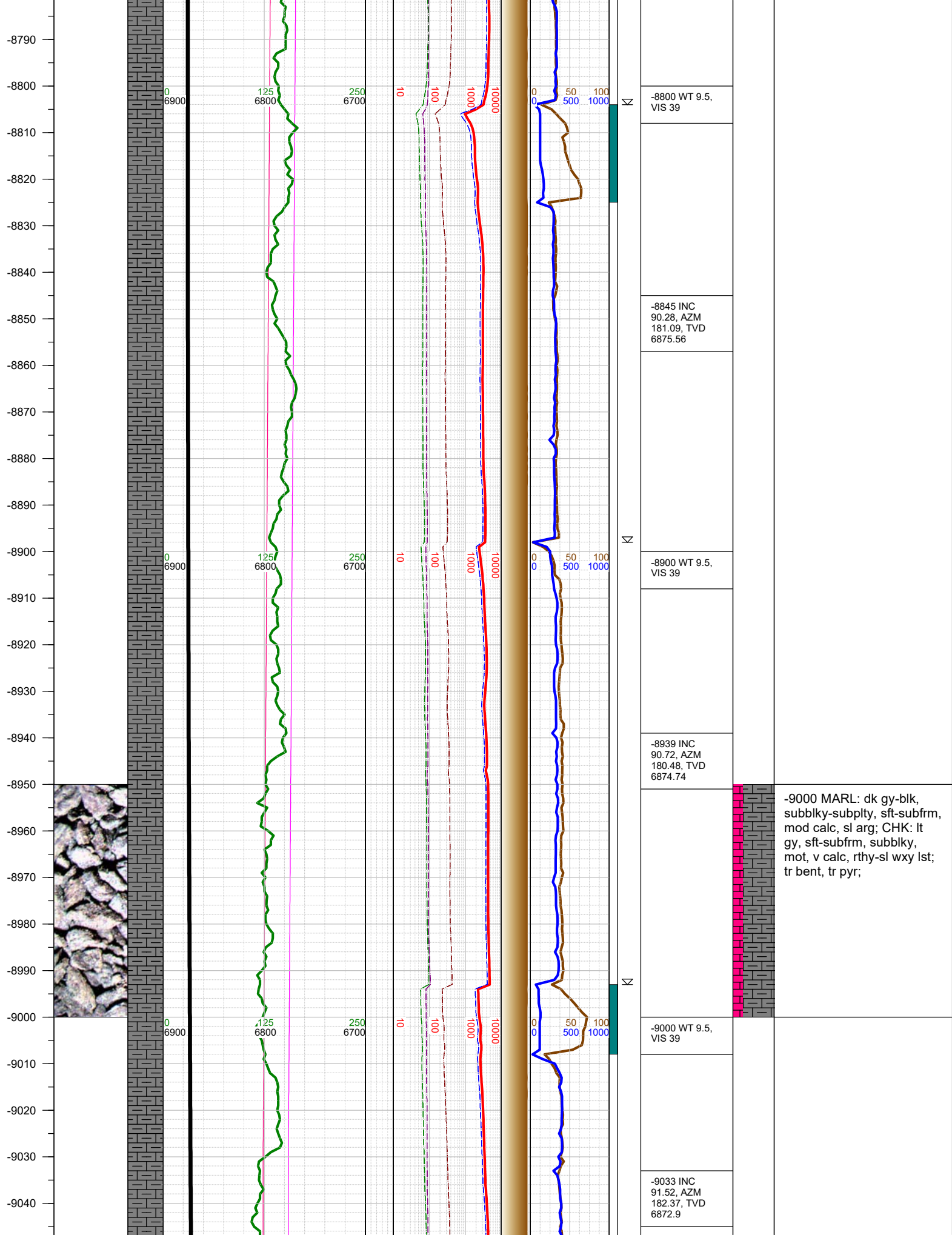
-8600 WT 9.5,
VIS 39

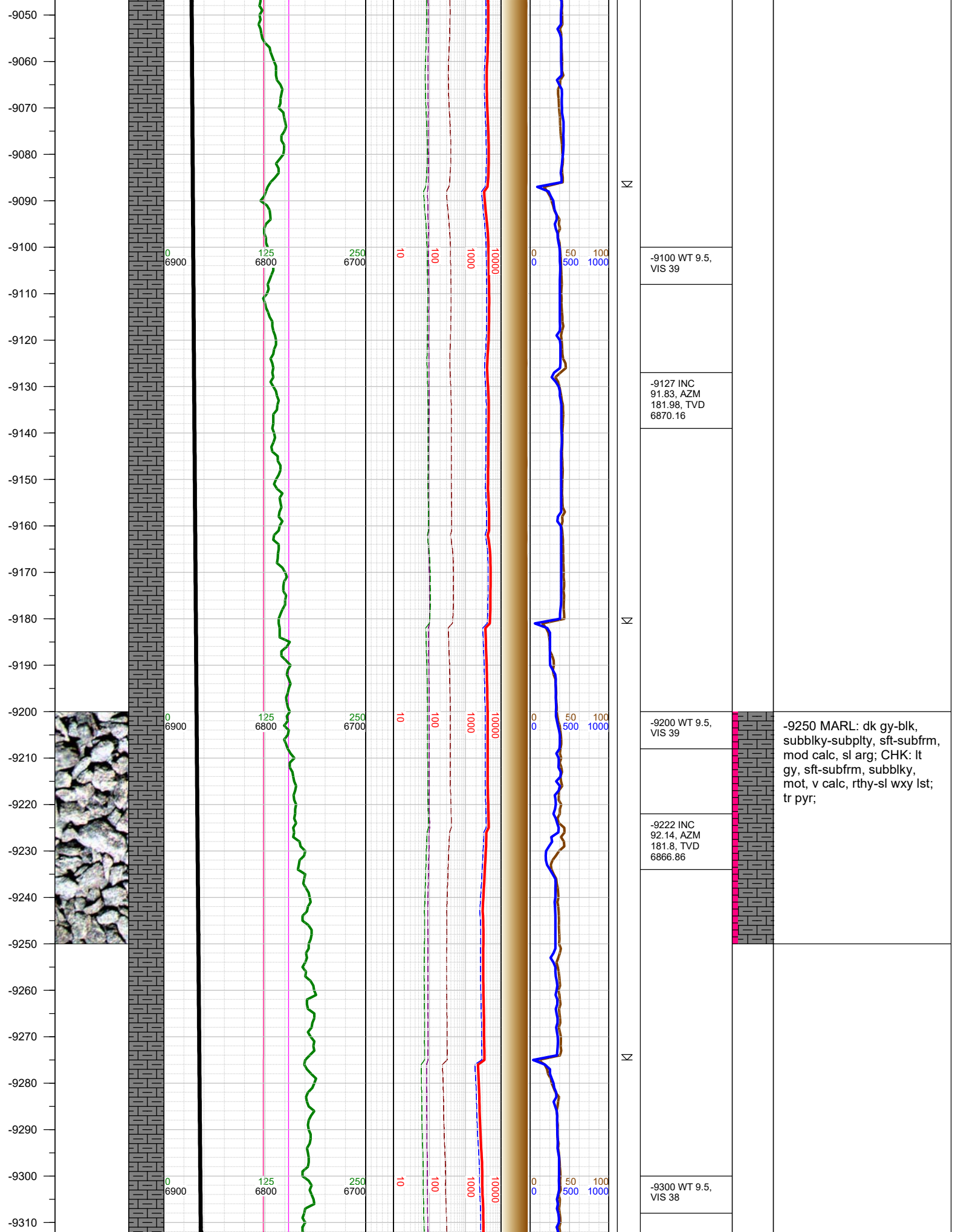
-8656 INC
89.62, AZM
179.9, TVD
6874.91

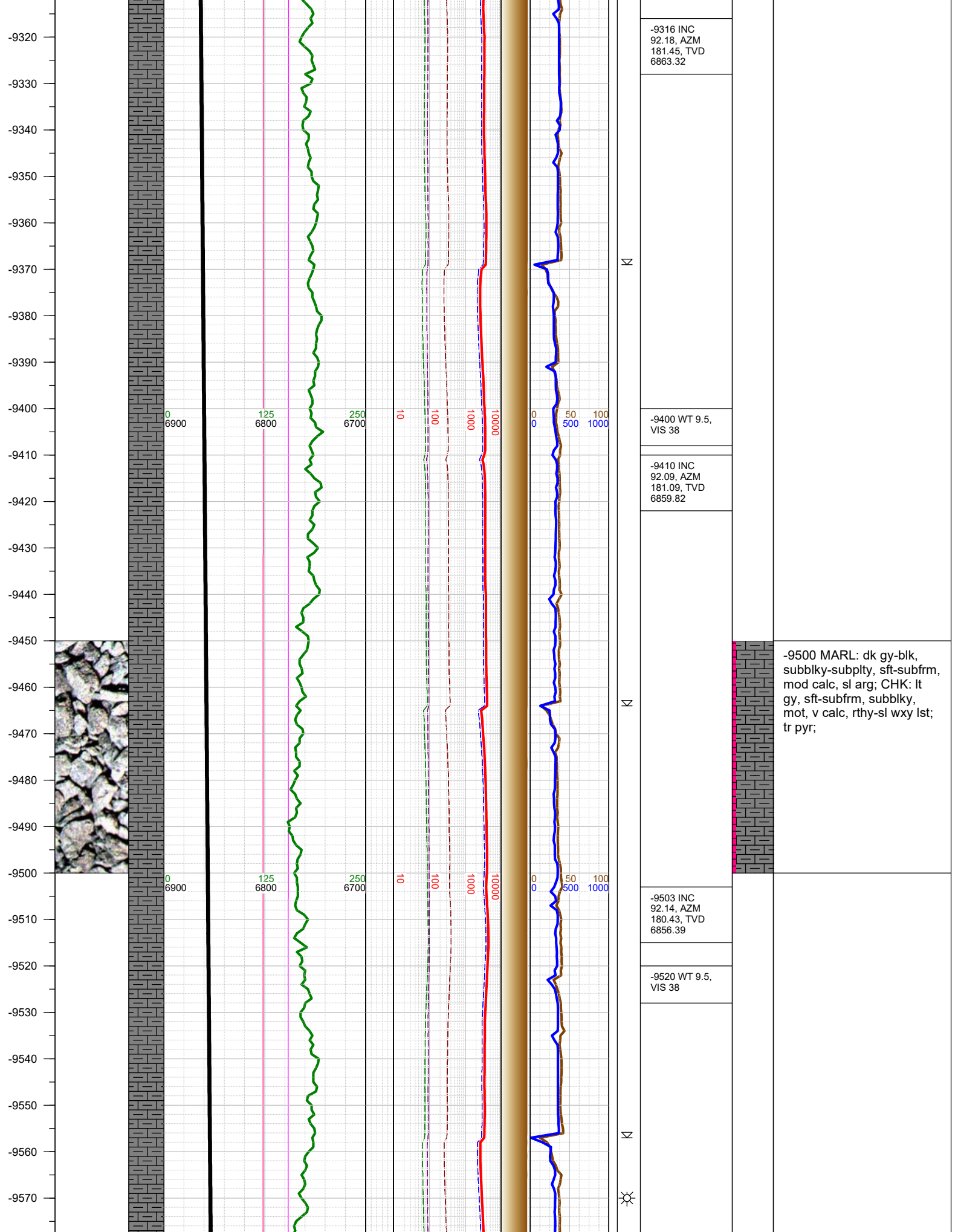
-8700 WT 9.5,
VIS 39

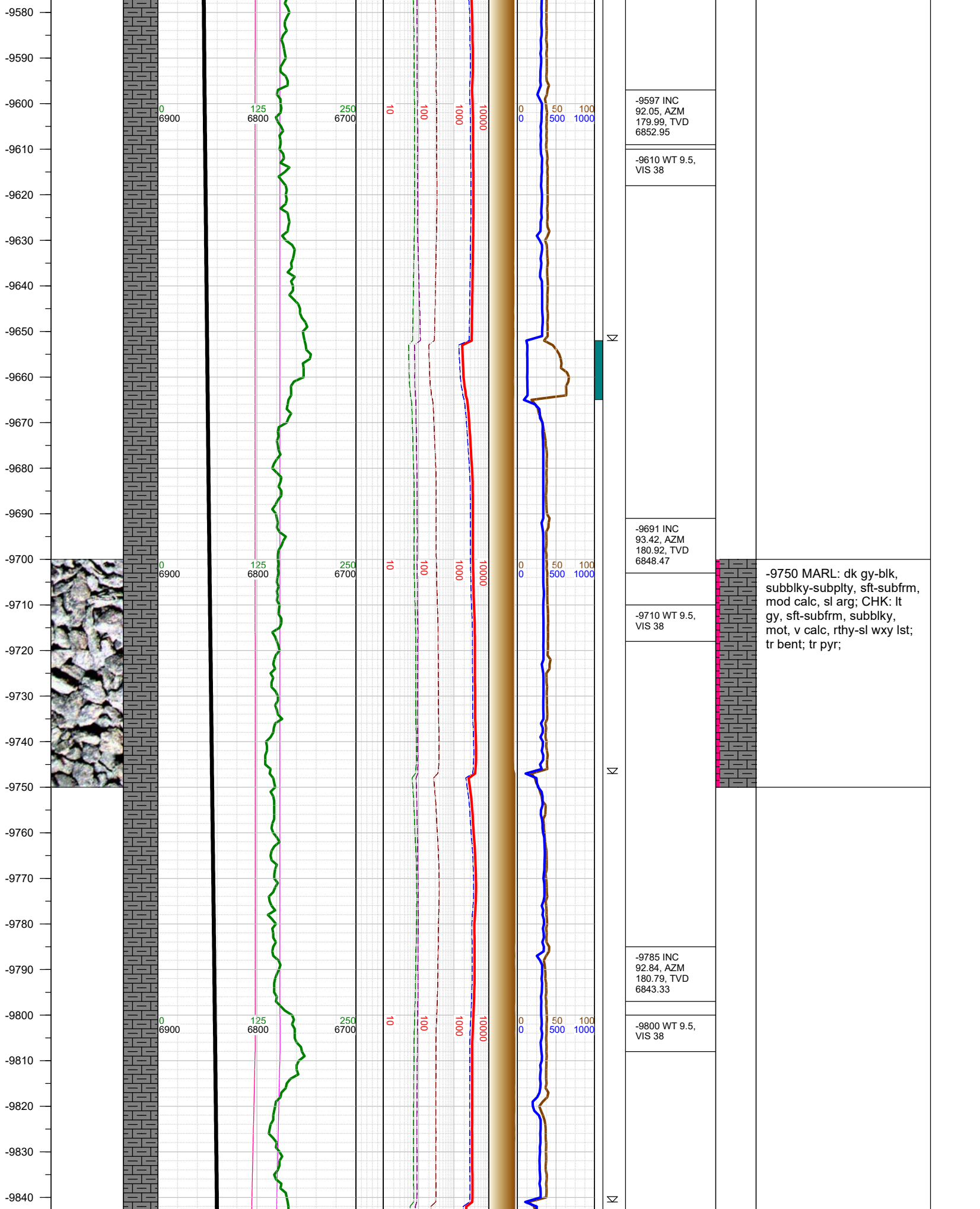
-8751 INC
89.66, AZM
178.76, TVD
6875.51

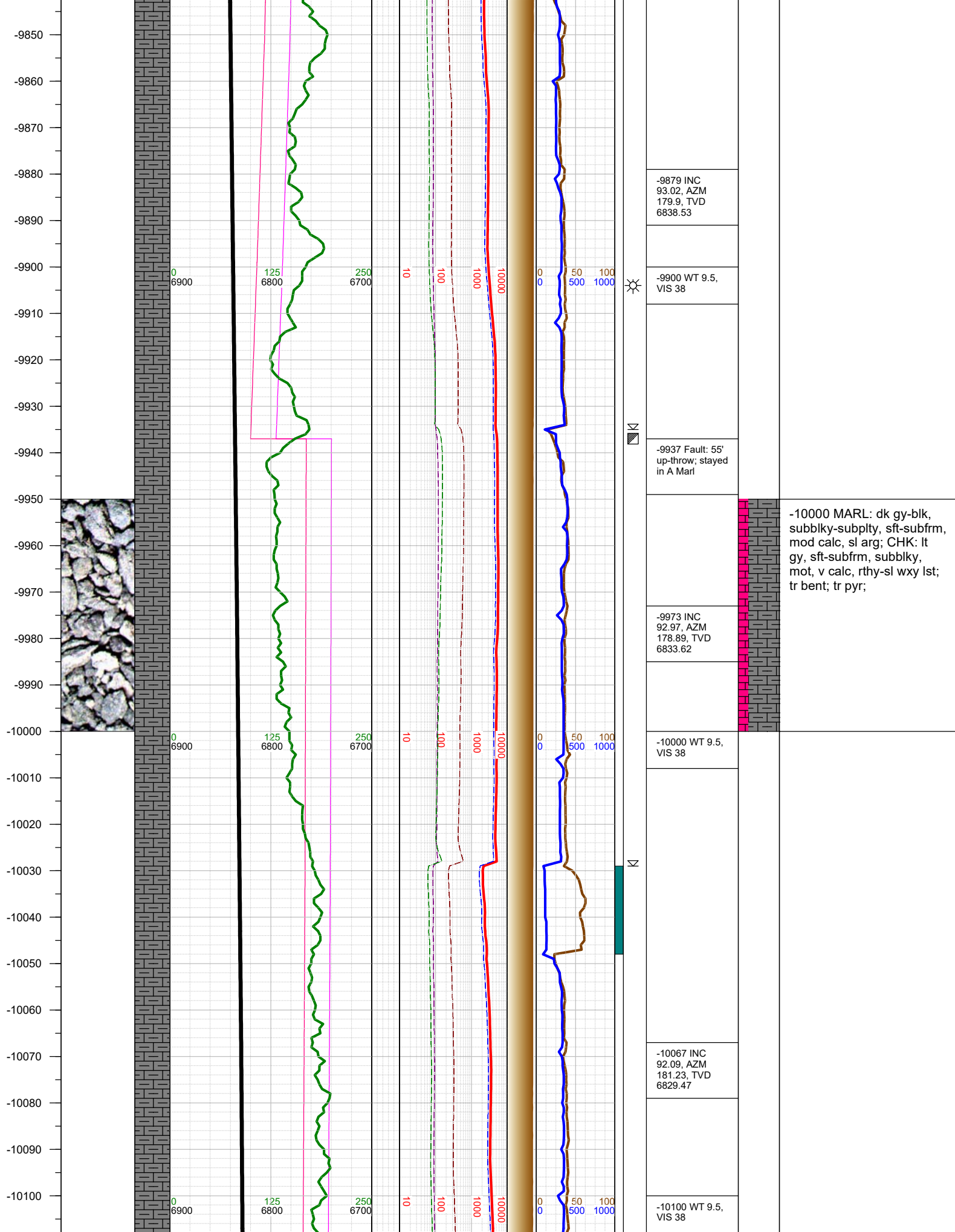
-8750 MARL: dk gy-blk,
subblky-subplty, sft-subfrm,
mod calc, sl arg; CHK: lt
gy, sft-subfrm, subblky,
mot, v calc, rthy-sl wxy lst;
tr bent, tr pyr;

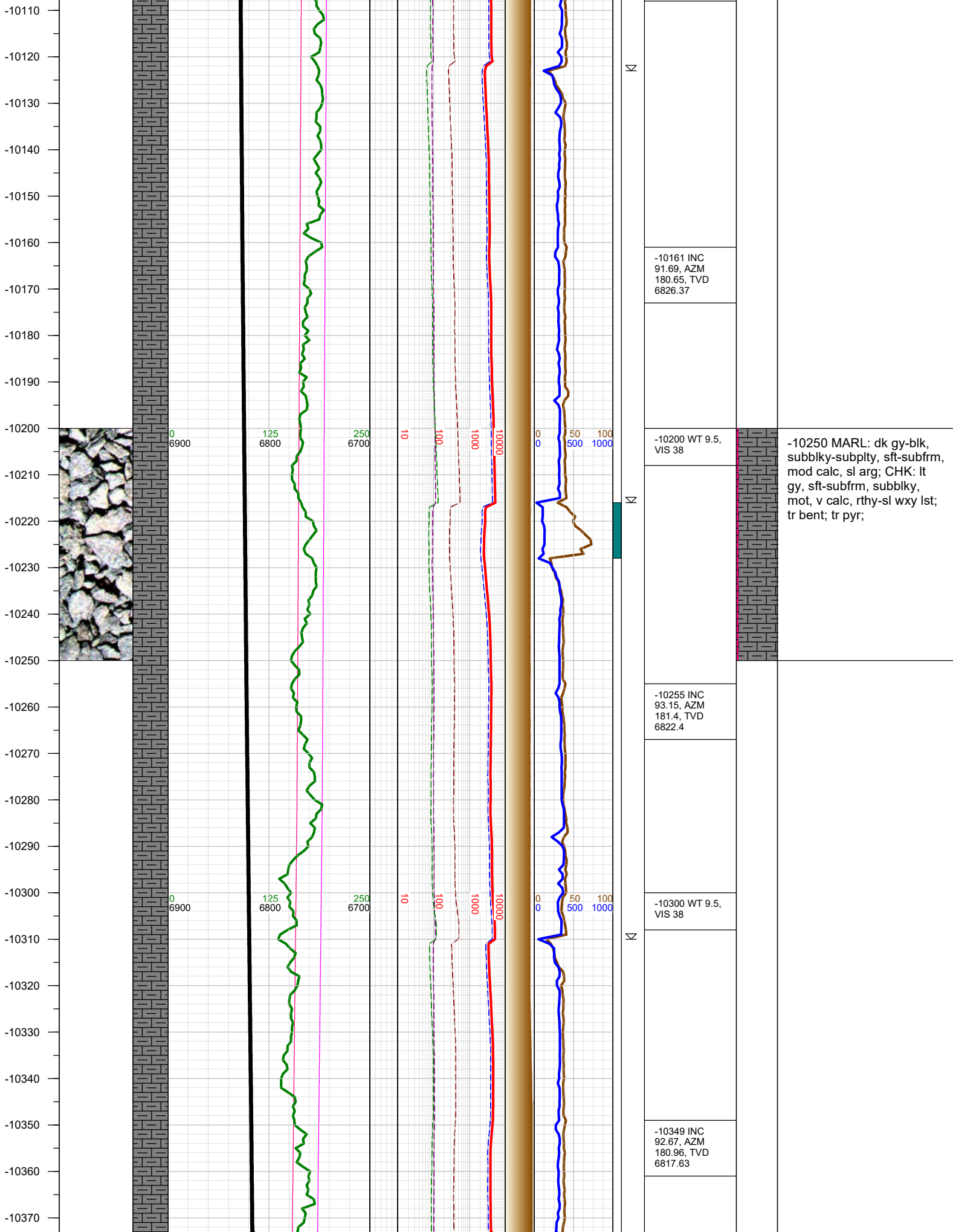




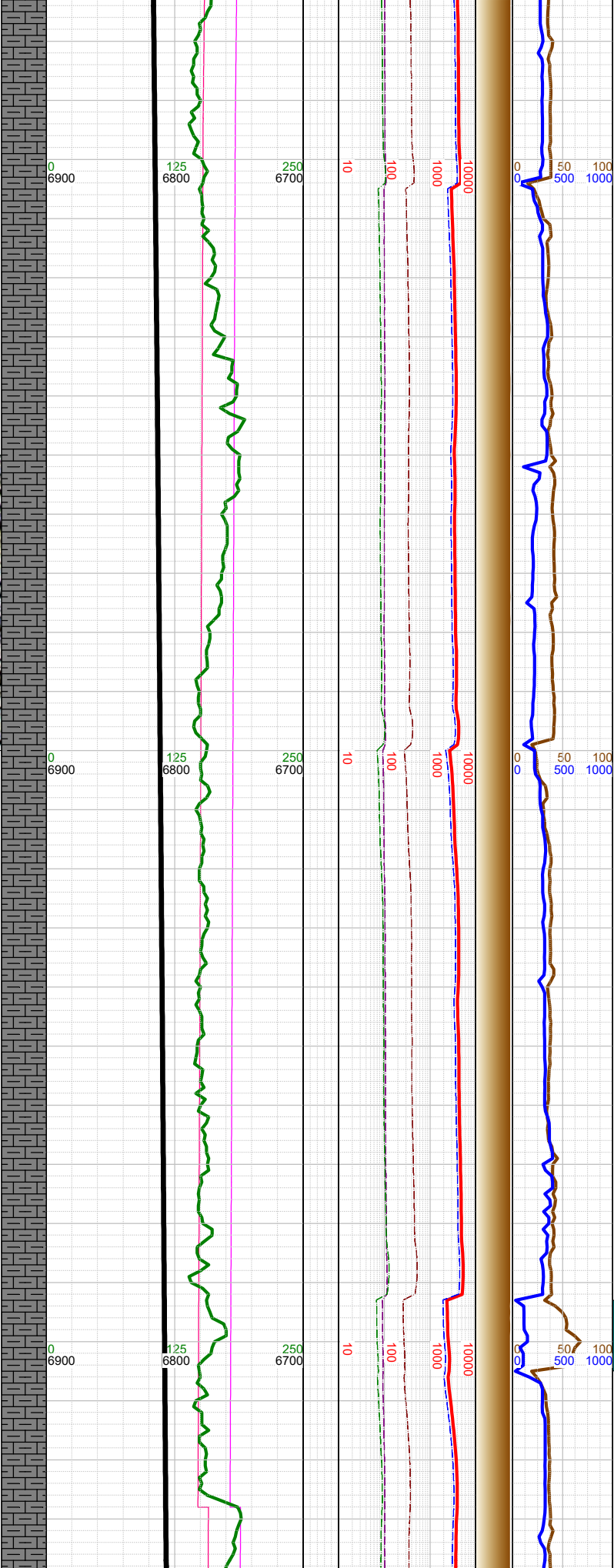
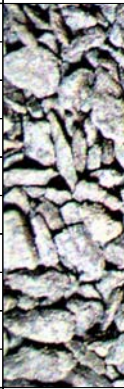




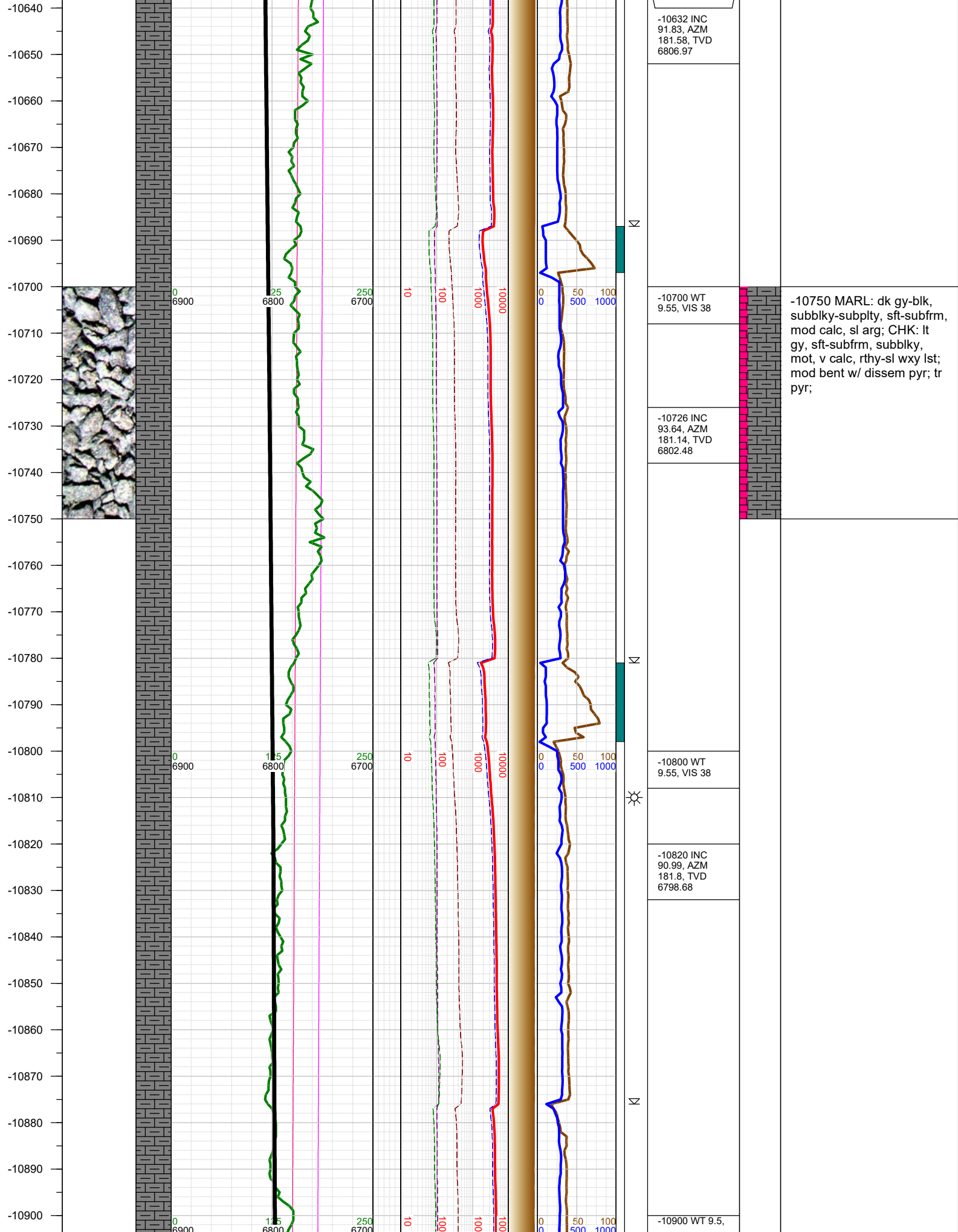




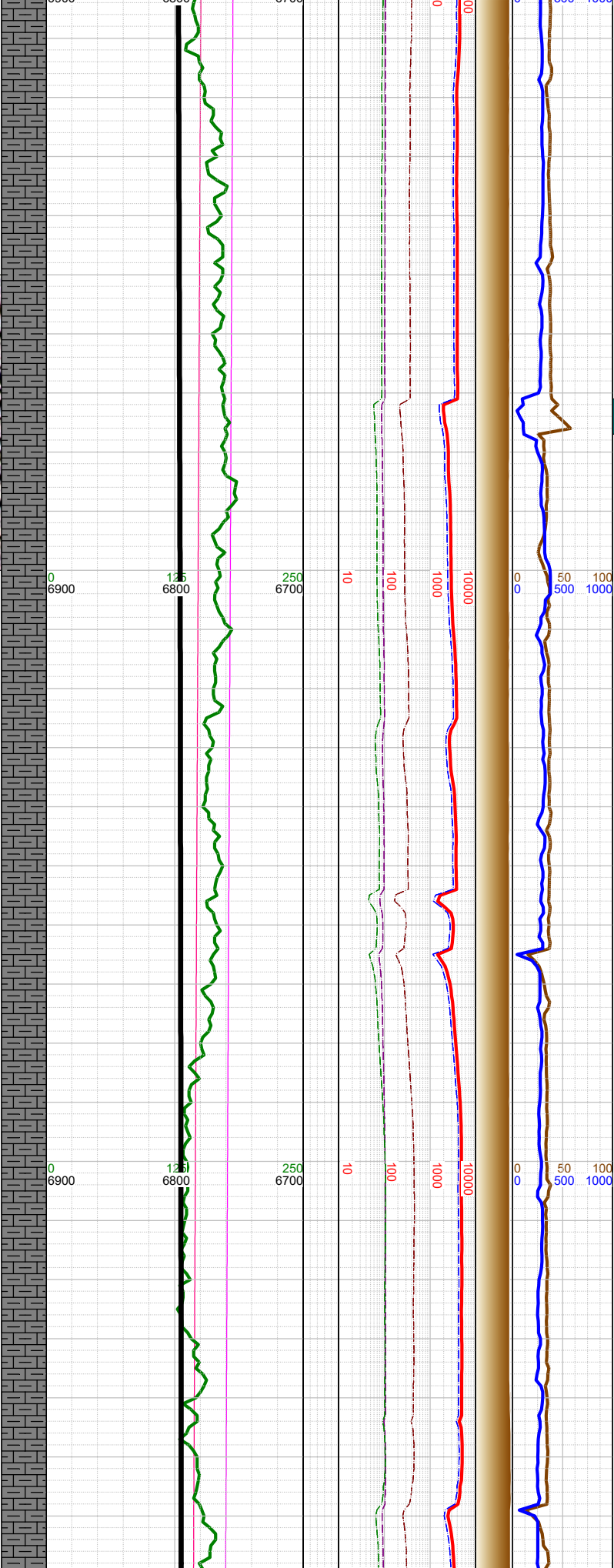
-10380
-10390
-10400
-10410
-10420
-10430
-10440
-10450
-10460
-10470
-10480
-10490
-10500
-10510
-10520
-10530
-10540
-10550
-10560
-10570
-10580
-10590
-10600
-10610
-10620
-10630



N	-10400 WT 9.5, VIS 38	
	-10443 INC 92.4, AZM 180.21, TVD 6813.47	
		-10500 MARL: dk gy-blk, subblky-subplty, sft-subfrm, mod calc, sl arg; CHK: lt gy, sft-subfrm, subblky, mot, v calc, rthy-sl wxy lst; tr bent; tr pyr;
N	-10500 WT 9.55, VIS 38	
	-10537 INC 91.83, AZM 180.52, TVD 6810	
N	-10600 WT 9.55, VIS 38	
	-10628 Fault: 8' up-throw; stayed in A Marl	



-10910
-10920
-10930
-10940
-10950
-10960
-10970
-10980
-10990
-11000
-11010
-11020
-11030
-11040
-11050
-11060
-11070
-11080
-11090
-11100
-11110
-11120
-11130
-11140
-11150
-11160

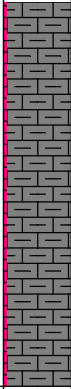


Σ

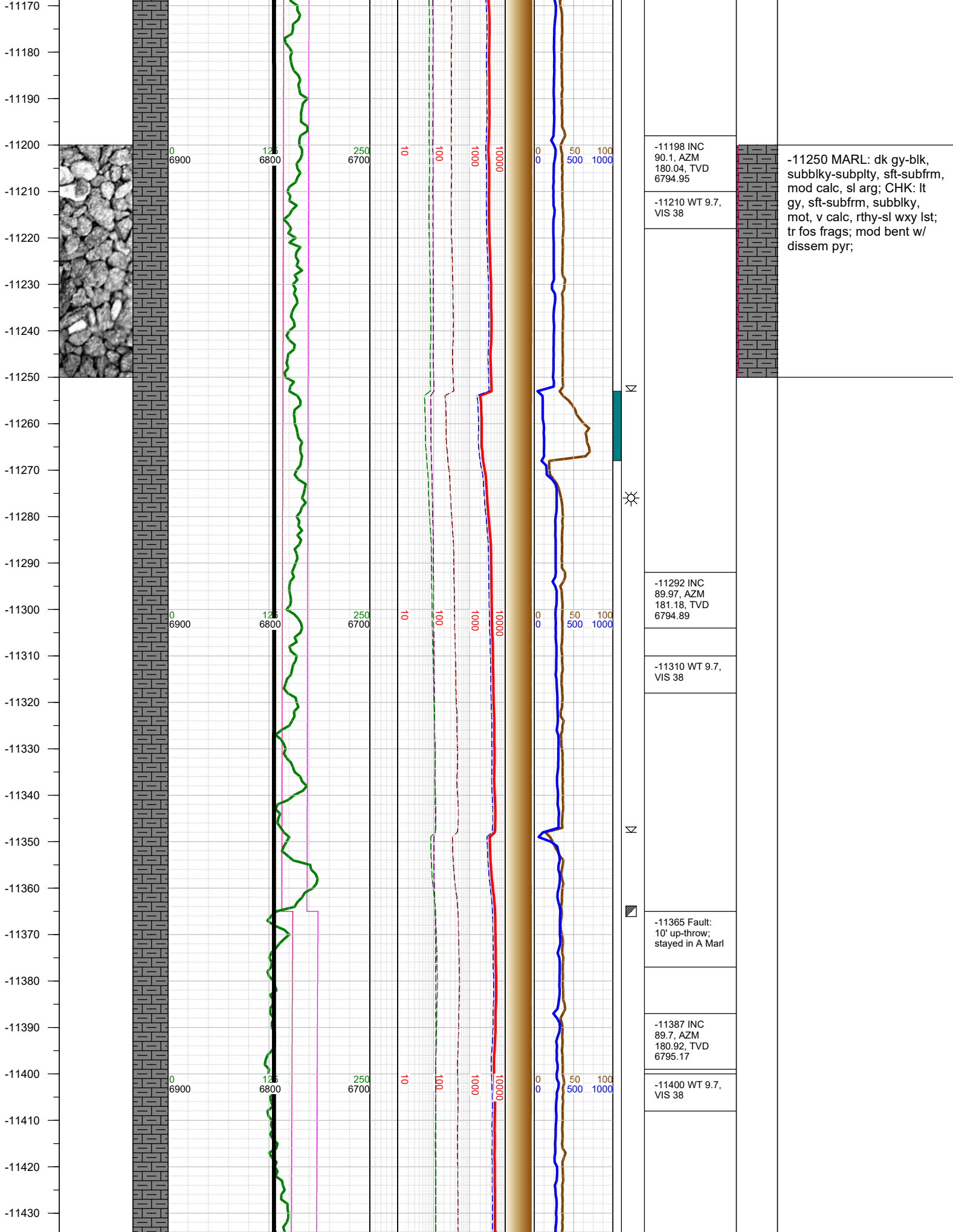
Σ

Σ

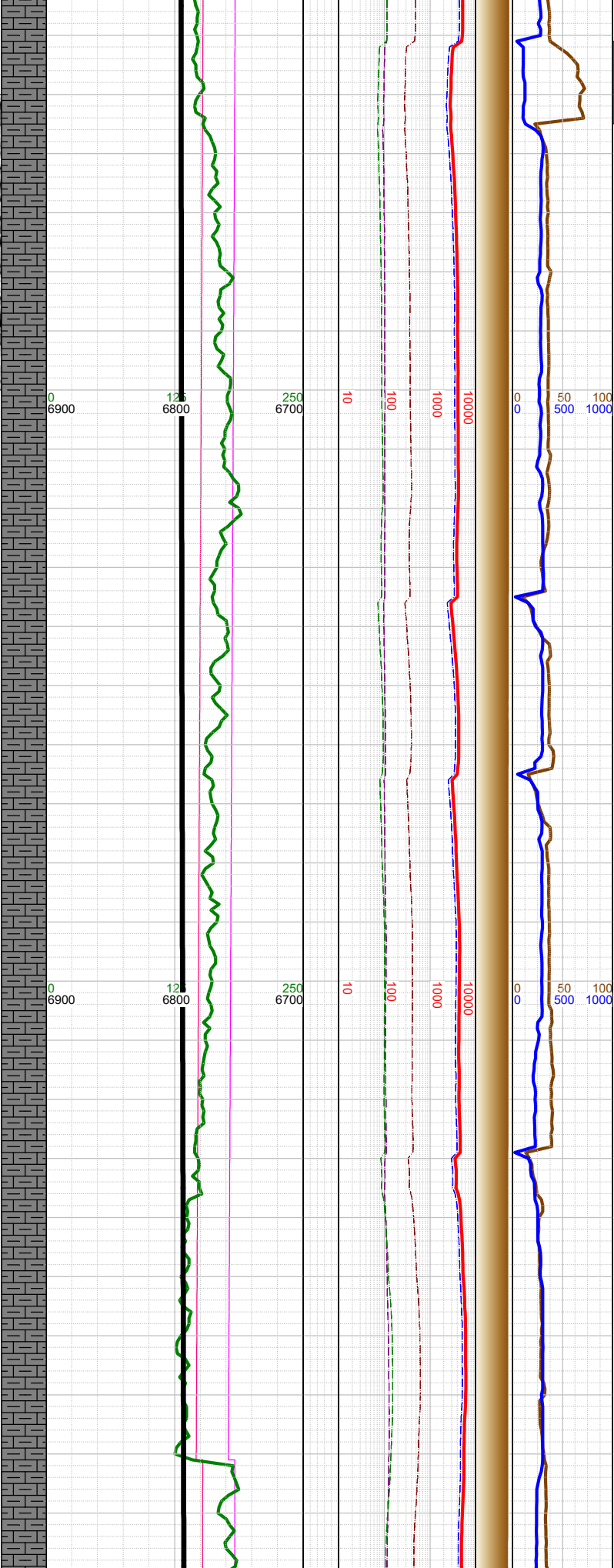
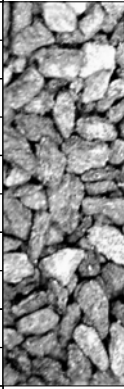
VIS 38
-10914 INC 91.03, AZM 181.23, TVD 6797.03
-11000 WT 9.5, VIS 38
-11009 INC 90.46, AZM 180.61, TVD 6795.79
-11103 INC 90.23, AZM 180.57, TVD 6795.23
-11120 WT 9.5, VIS 38



-11000 MARL: dk gy-blk, subblky-subplty, sft-subfrm, mod calc, sl arg; CHK: lt gy, sft-subfrm, subblky, mot, v calc, rthy-sl wxy lst; mod bent w/ dissem pyr; tr pyr;



-11440
-11450
-11460
-11470
-11480
-11490
-11500
-11510
-11520
-11530
-11540
-11550
-11560
-11570
-11580
-11590
-11600
-11610
-11620
-11630
-11640
-11650
-11660
-11670
-11680
-11690



Σ
Σ
Σ
☀
Σ

-11481 INC
90.54, AZM
181.67, TVD
6794.97

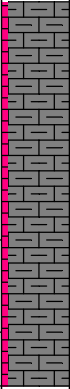
-11500 WT 9.7,
VIS 38

-11576 INC
90.37, AZM
181.71, TVD
6794.22

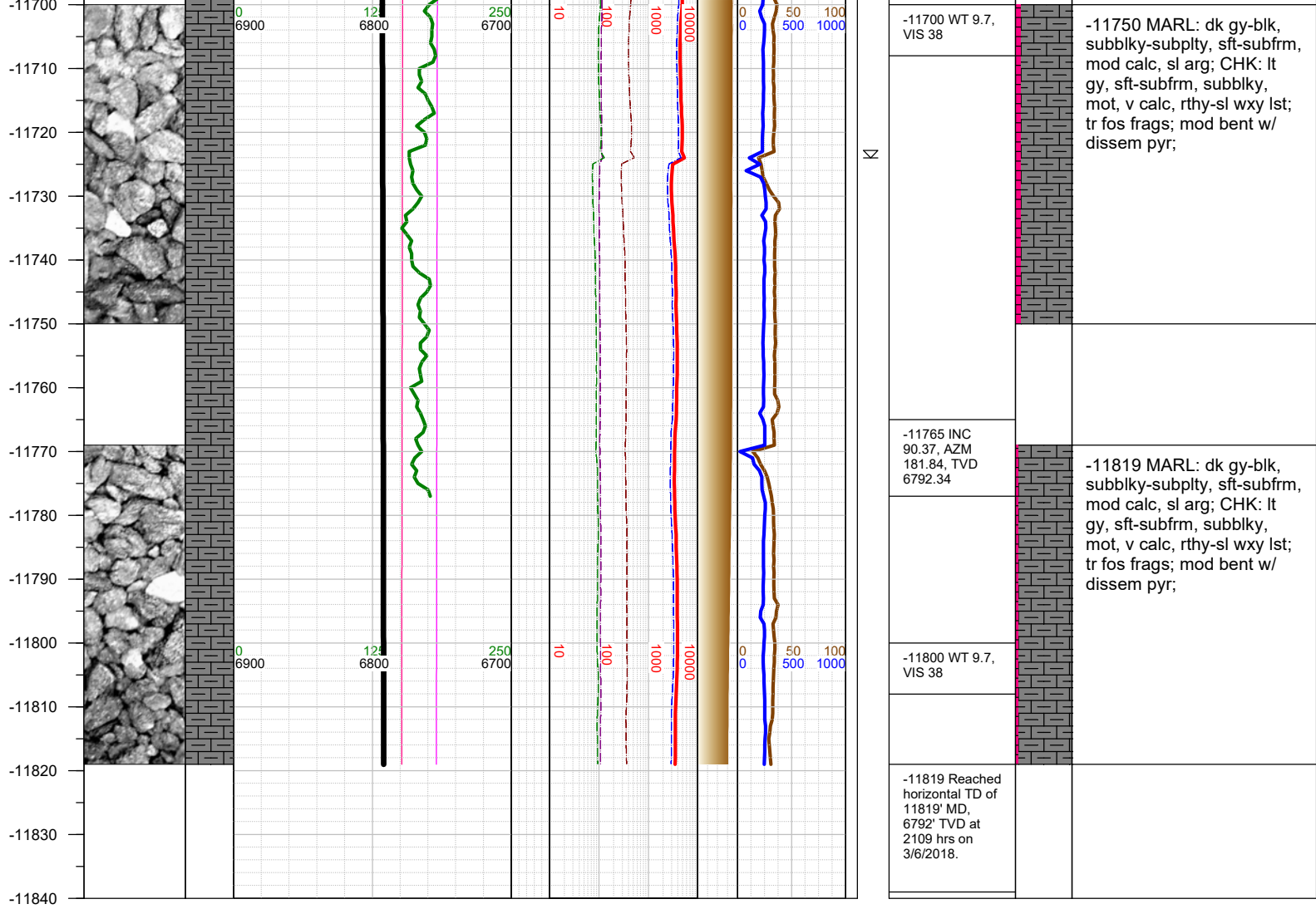
-11600 WT 9.7,
VIS 38

-11670 INC
90.77, AZM
181.67, TVD
6793.28

-11681 Fault: 5'
up-throw; stayed
in A Marl



-11500 MARL: dk gy-blk,
subbly-subply, sft-subfrm,
mod calc, sl arg; CHK: lt
gy, sft-subfrm, subbly,
mot, v calc, rthy-sl wxy lst;
tr fos frags; mod bent w/
dissem pyr;



TOTAL DEPTH = 11819'

Thank you for using Earth Science Agency