

OPERATOR: **Extraction Oil & Gas**

WELL NAME: **WS Sunrise 2-5-5**

FIELD NAME: DJ Basin - Wattenberg

DRILLING RIG: Patterson 346

API #: 05-123-46048

LAT/LONG: 40.43719, -104.68381

SURFACE HOLE: SWSE S32-T6N-R65W, 249' FSL, 1704' FEL

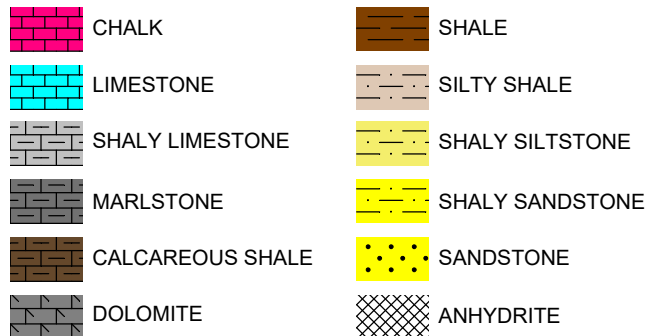
BOTTOM HOLE: S5-T5N-R65W, 460' FSL, 1650' FEL



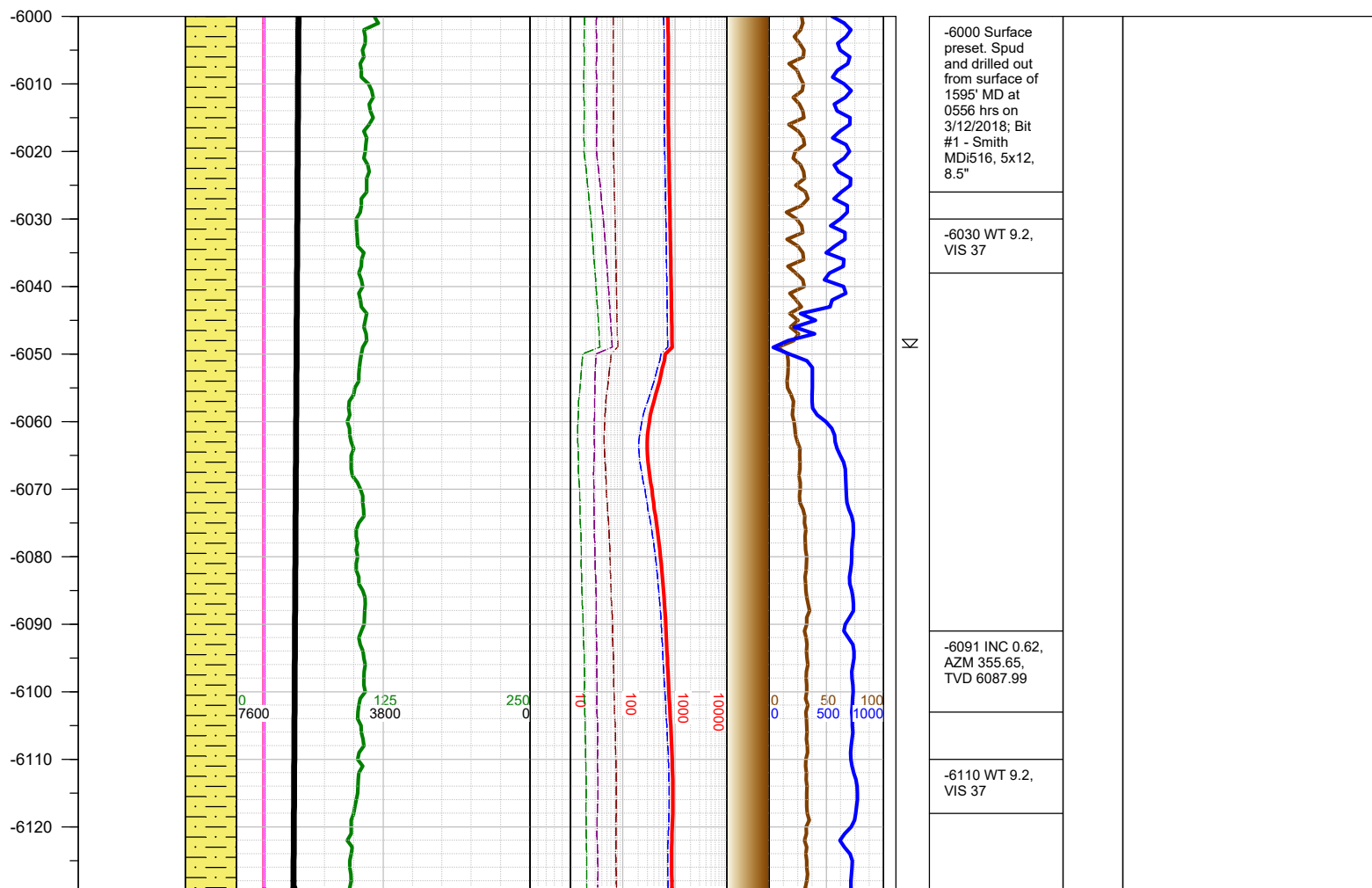
Earth Science Agency, LLC

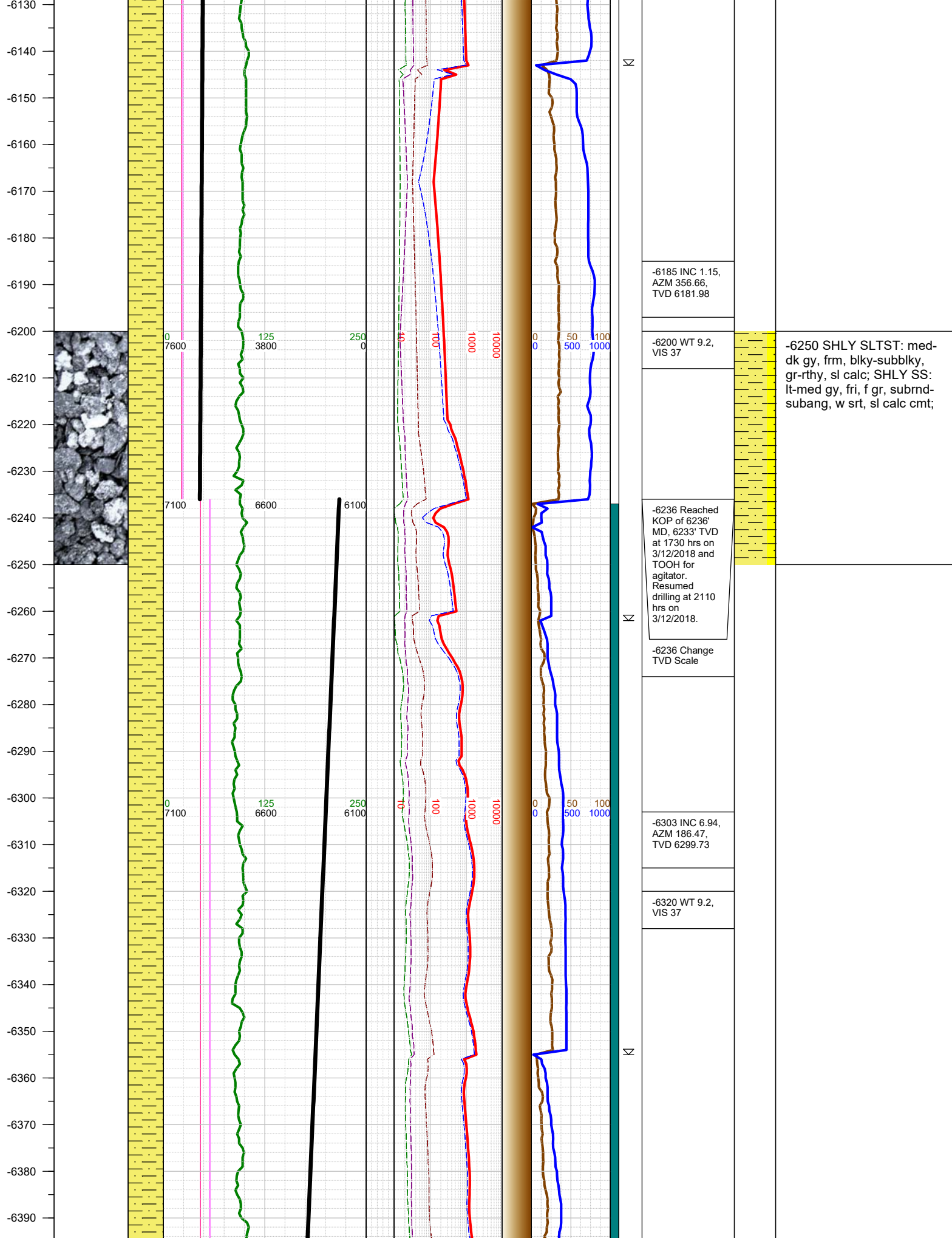
COUNTY: Weld  
STATE: Colorado  
GROUND ELEVATION: 4641'  
KELLY BUSHING: 4666'  
DRILLING FLUID: OBM  
TVD VS. MD: 6901' / 11782'  
SPUD DATE: March 12, 2018  
TD DATE: March 14, 2018  
  
DEPTHS LOGGED: 6000' - 11782'  
DATES LOGGED: March 12, 2018 - March 14, 2018  
GEOLOGISTS: Brian Whitfield, Levi Heintzelman  
SCALE: 5" = 100'

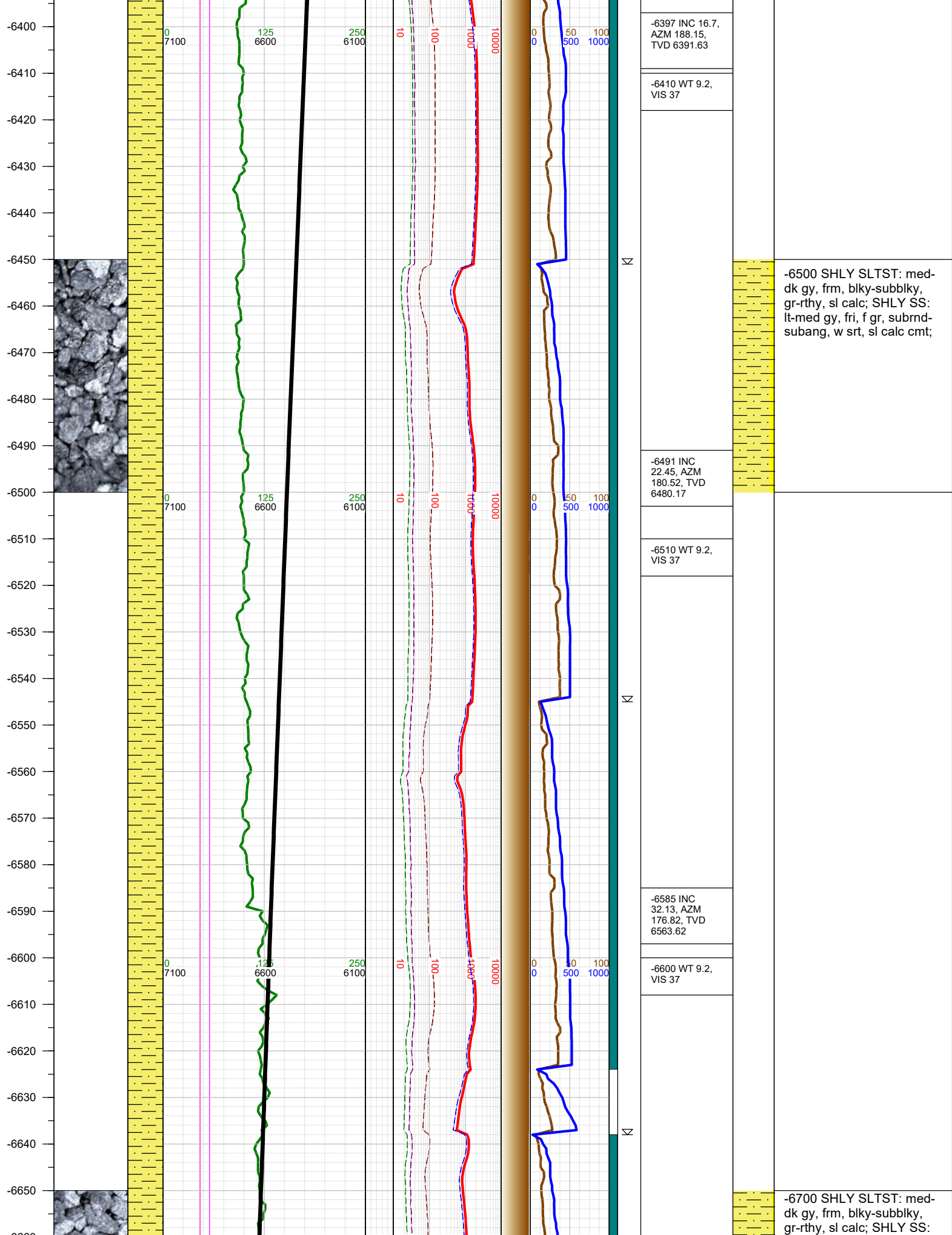
#### LEGEND



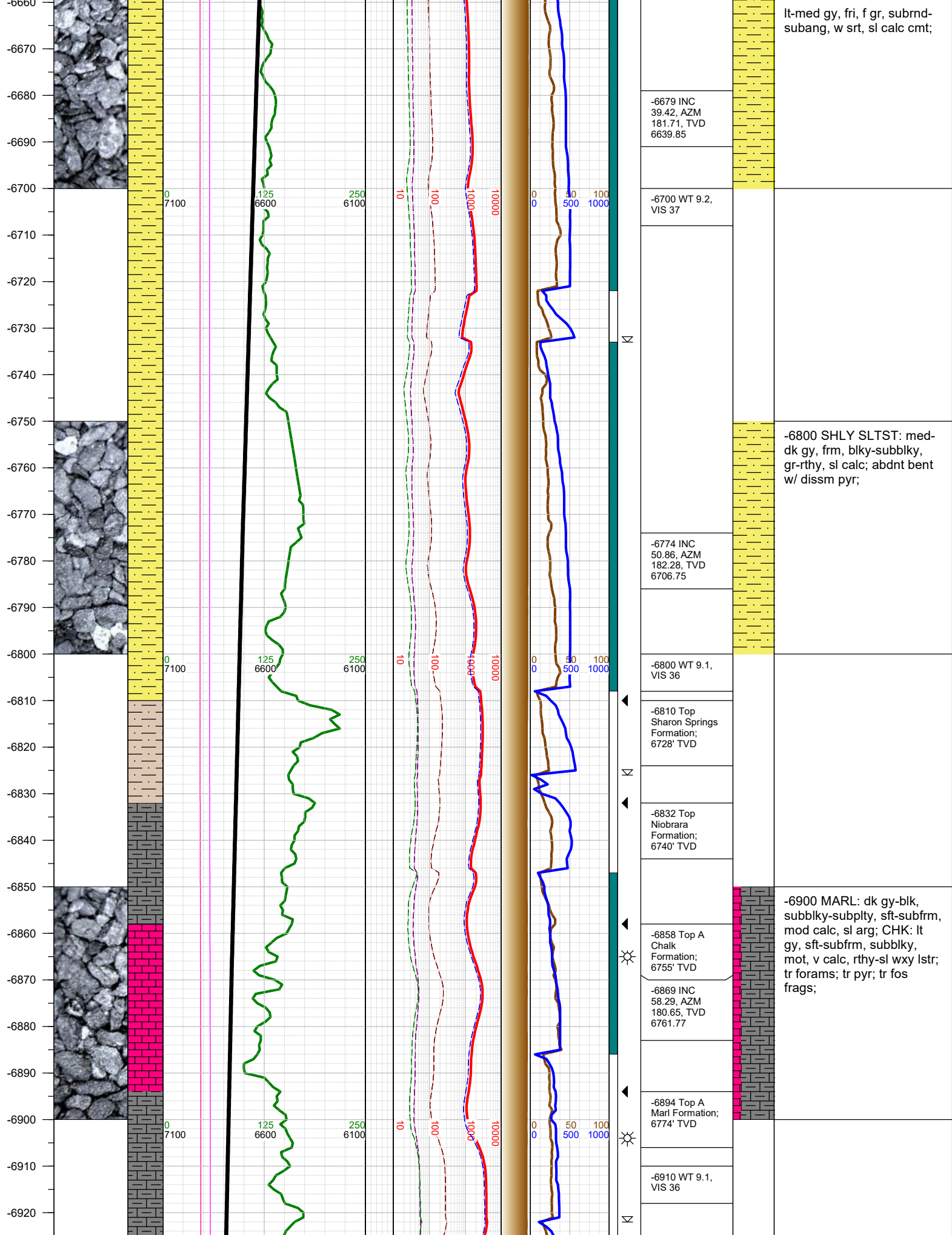
FORMATION  $\approx$  CONNECTION  $\Delta$  MIDNIGHT NEW BIT GAS SHOW FAULT

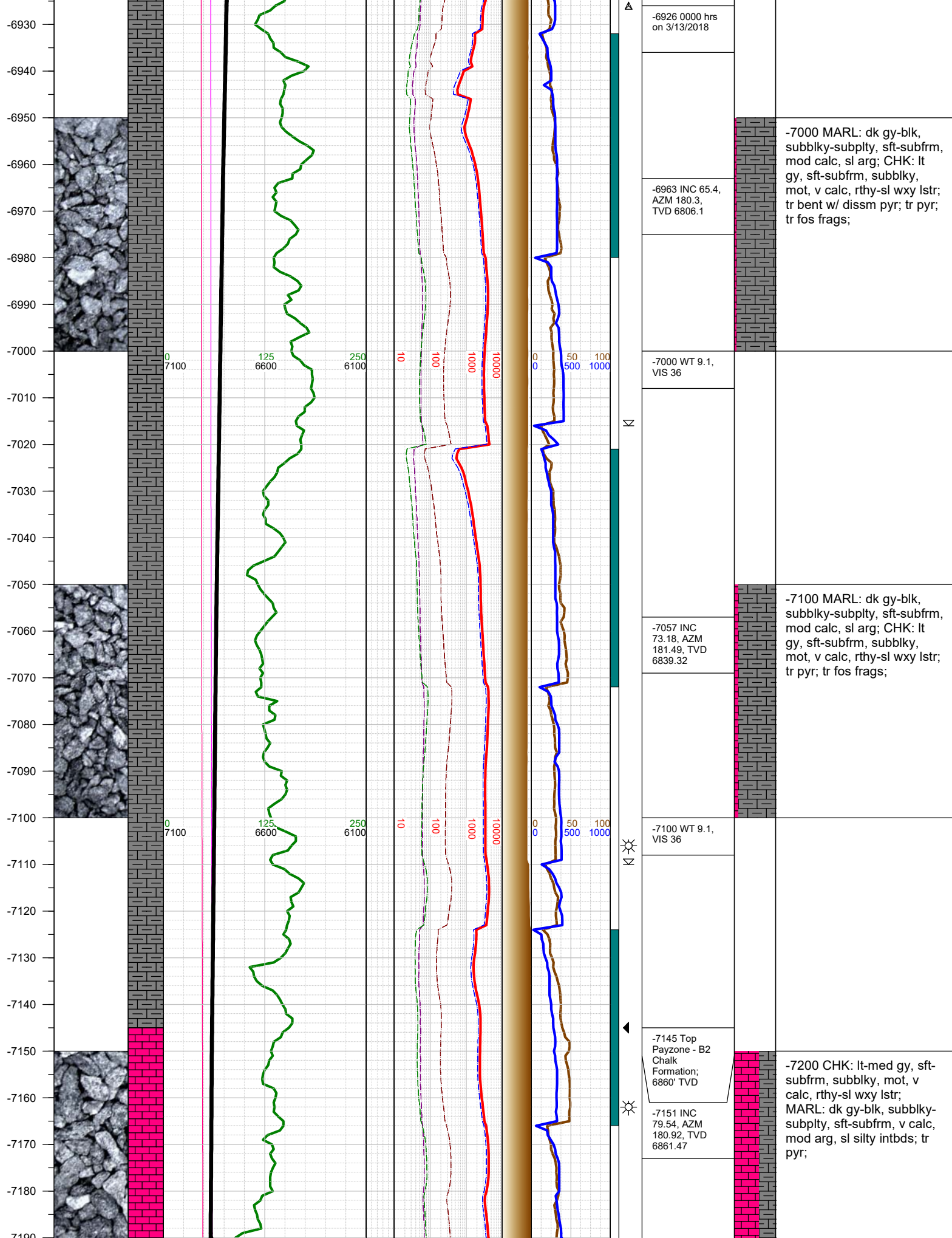


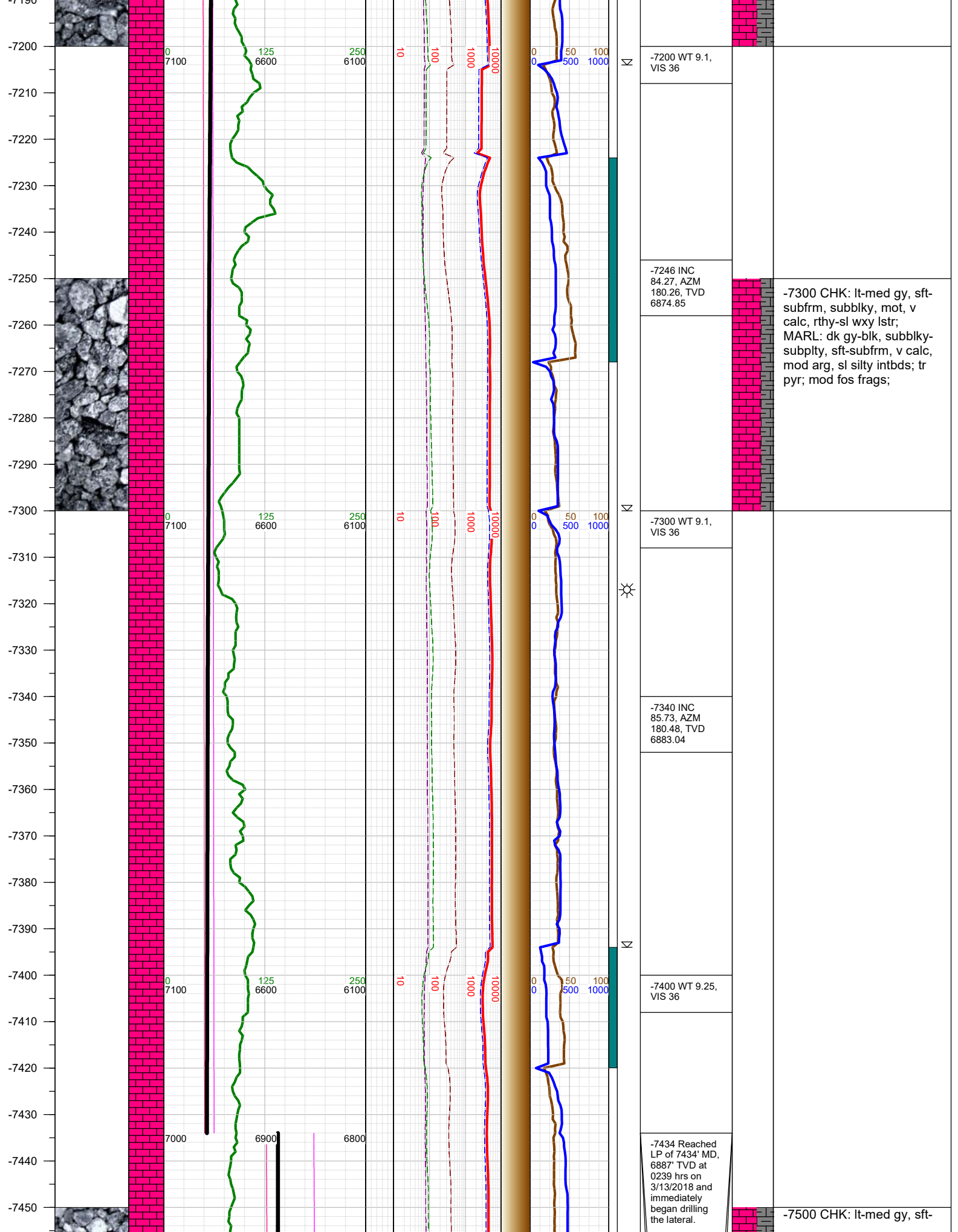




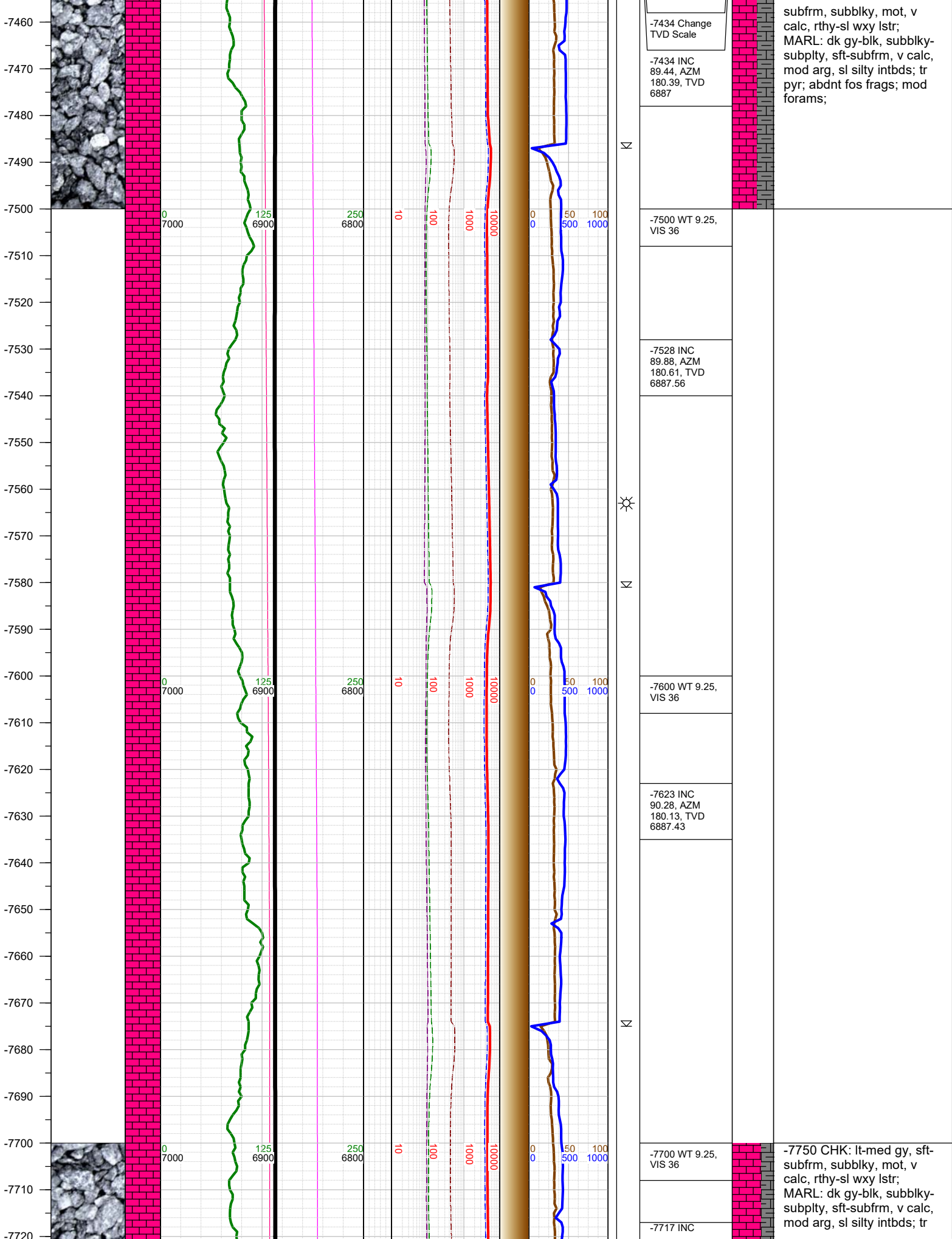


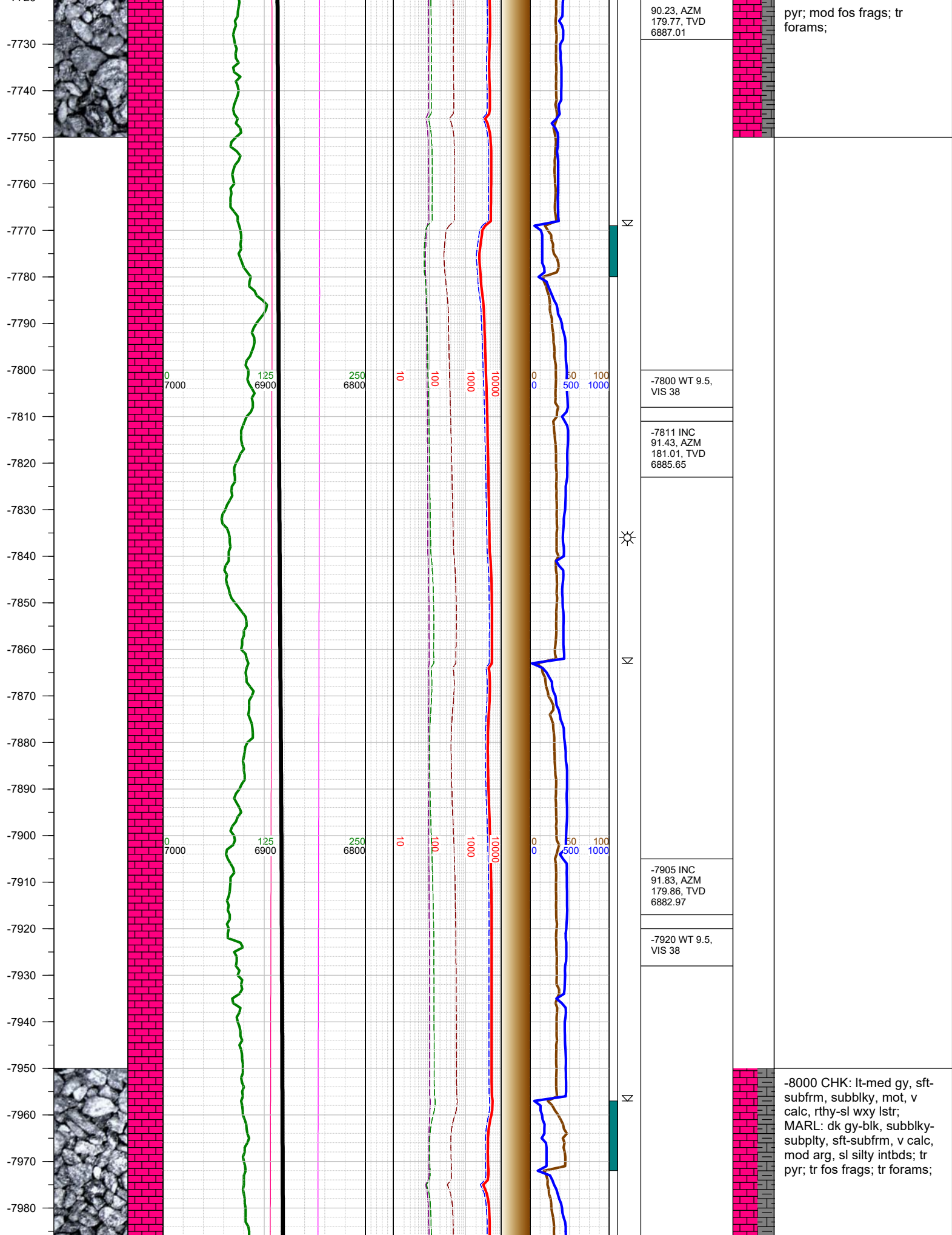




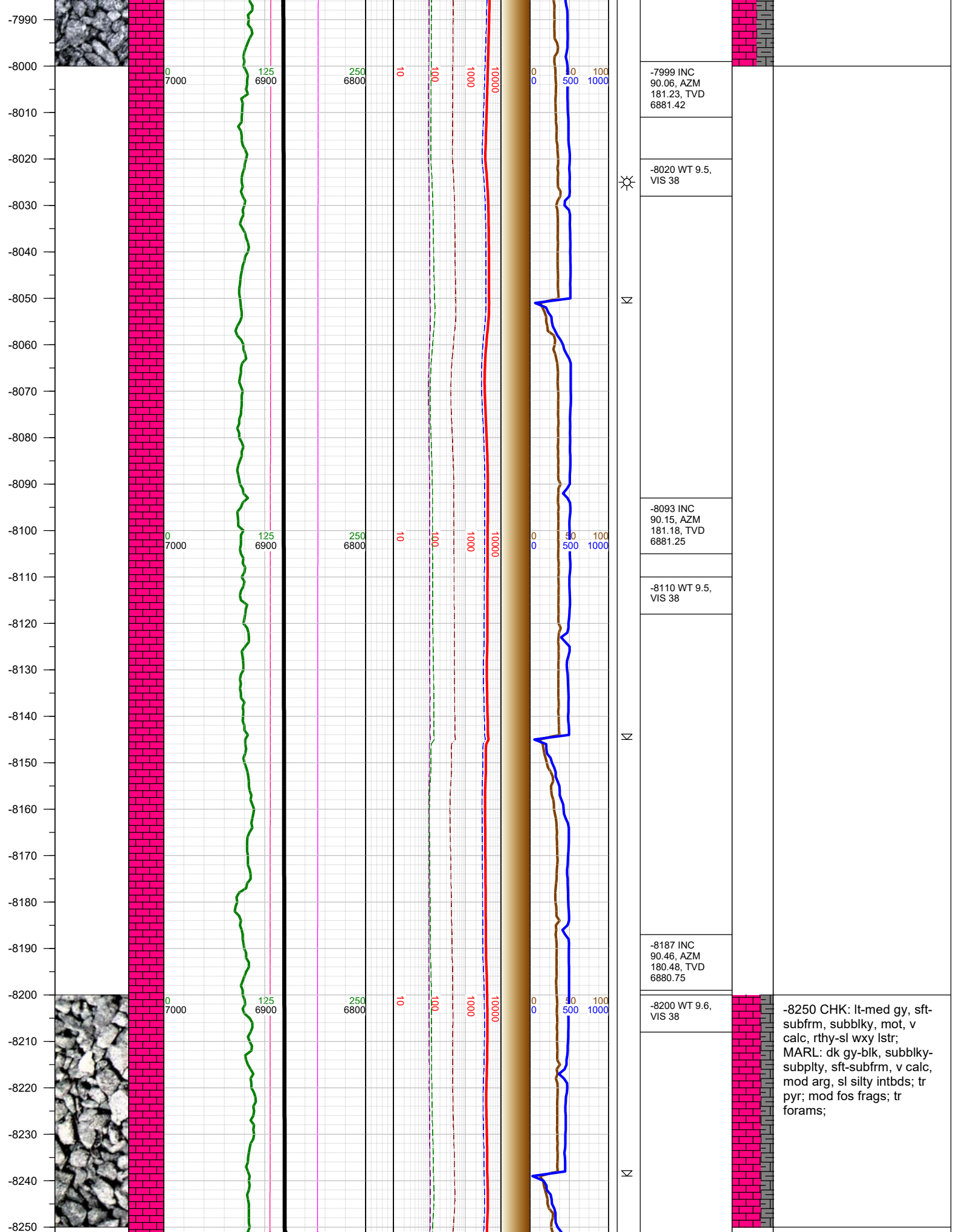


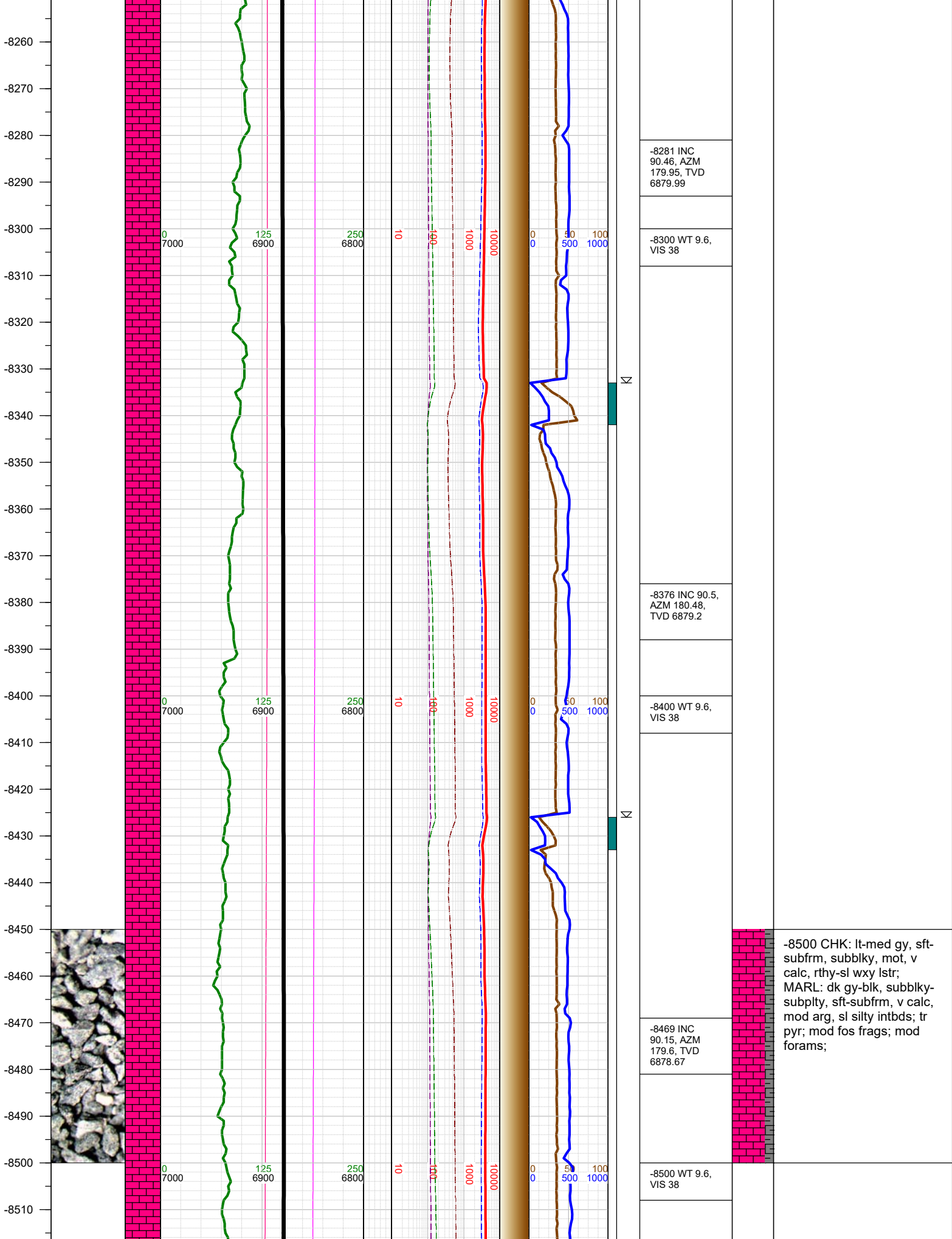




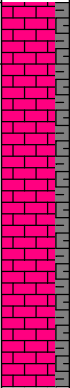
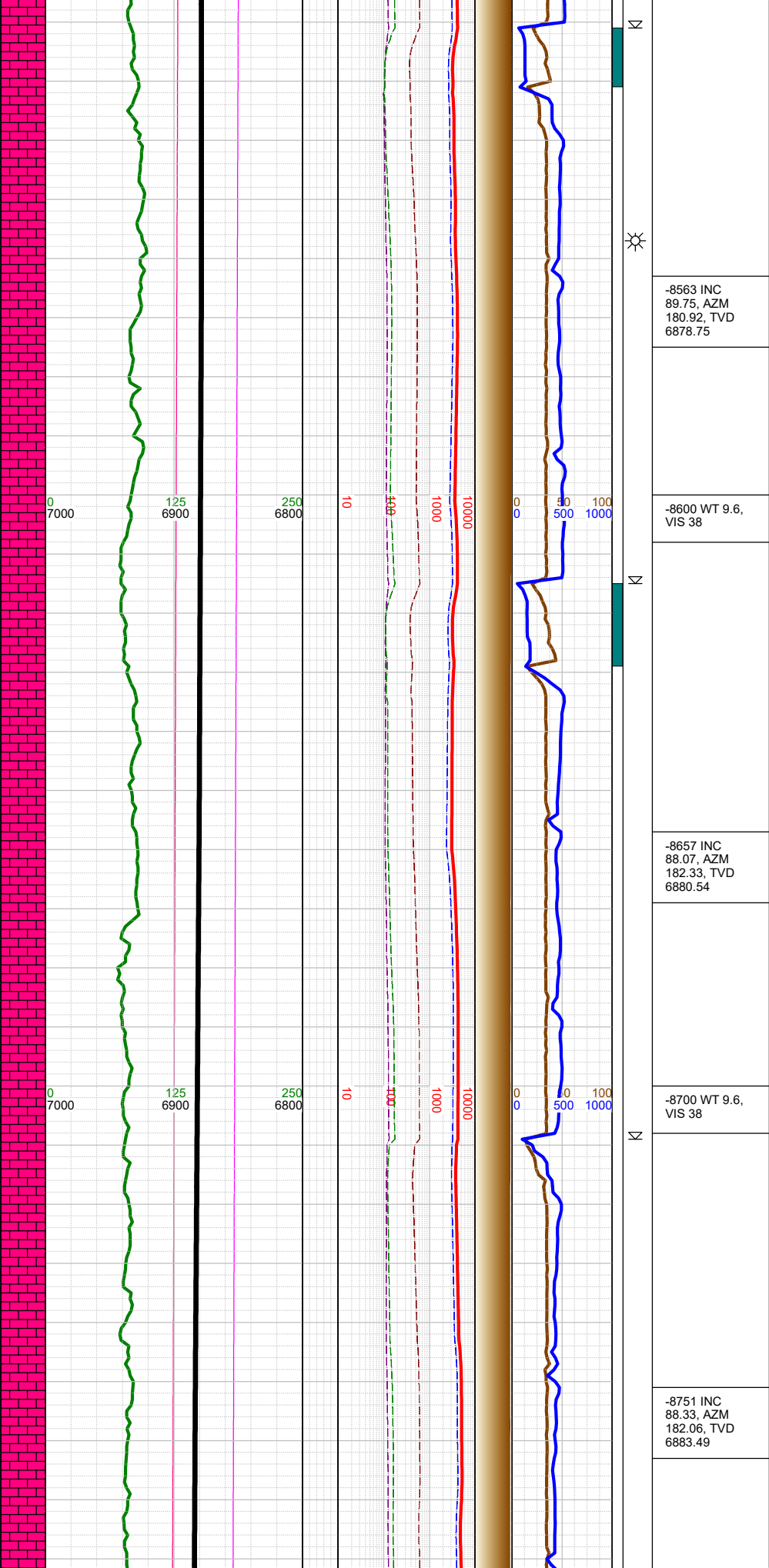






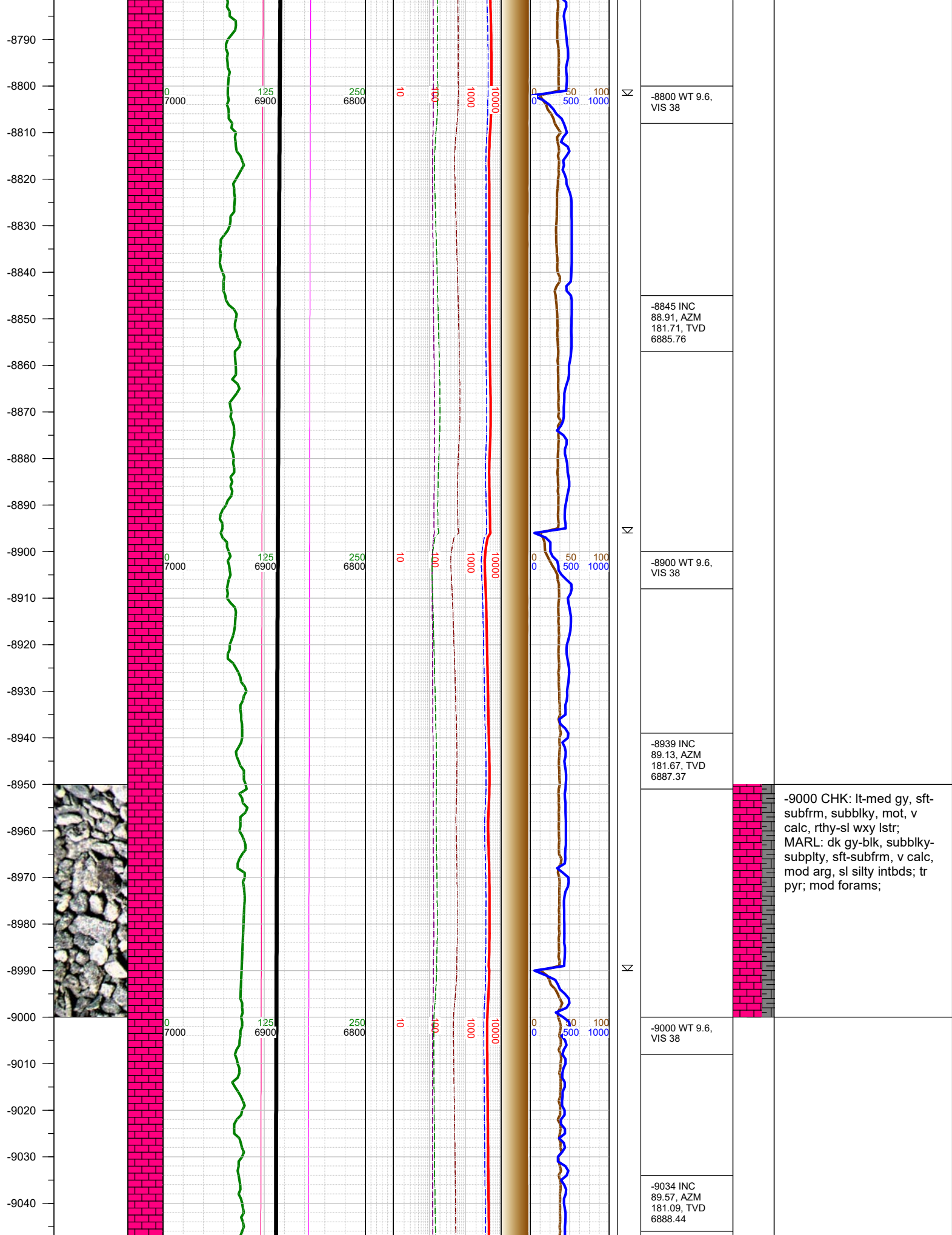


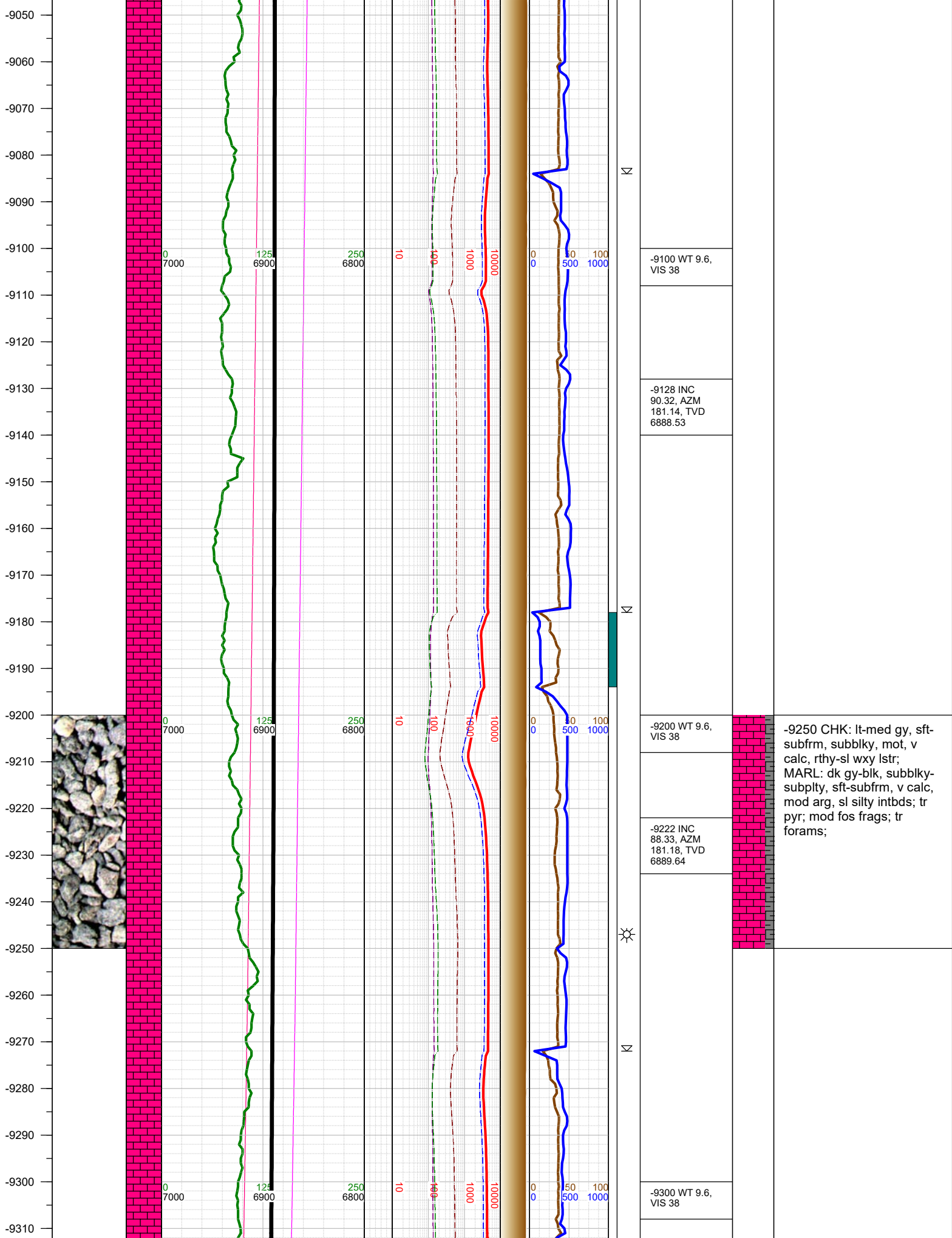
-8520  
-8530  
-8540  
-8550  
-8560  
-8570  
-8580  
-8590  
-8600  
-8610  
-8620  
-8630  
-8640  
-8650  
-8660  
-8670  
-8680  
-8690  
-8700  
-8710  
-8720  
-8730  
-8740  
-8750  
-8760  
-8770  
-8780

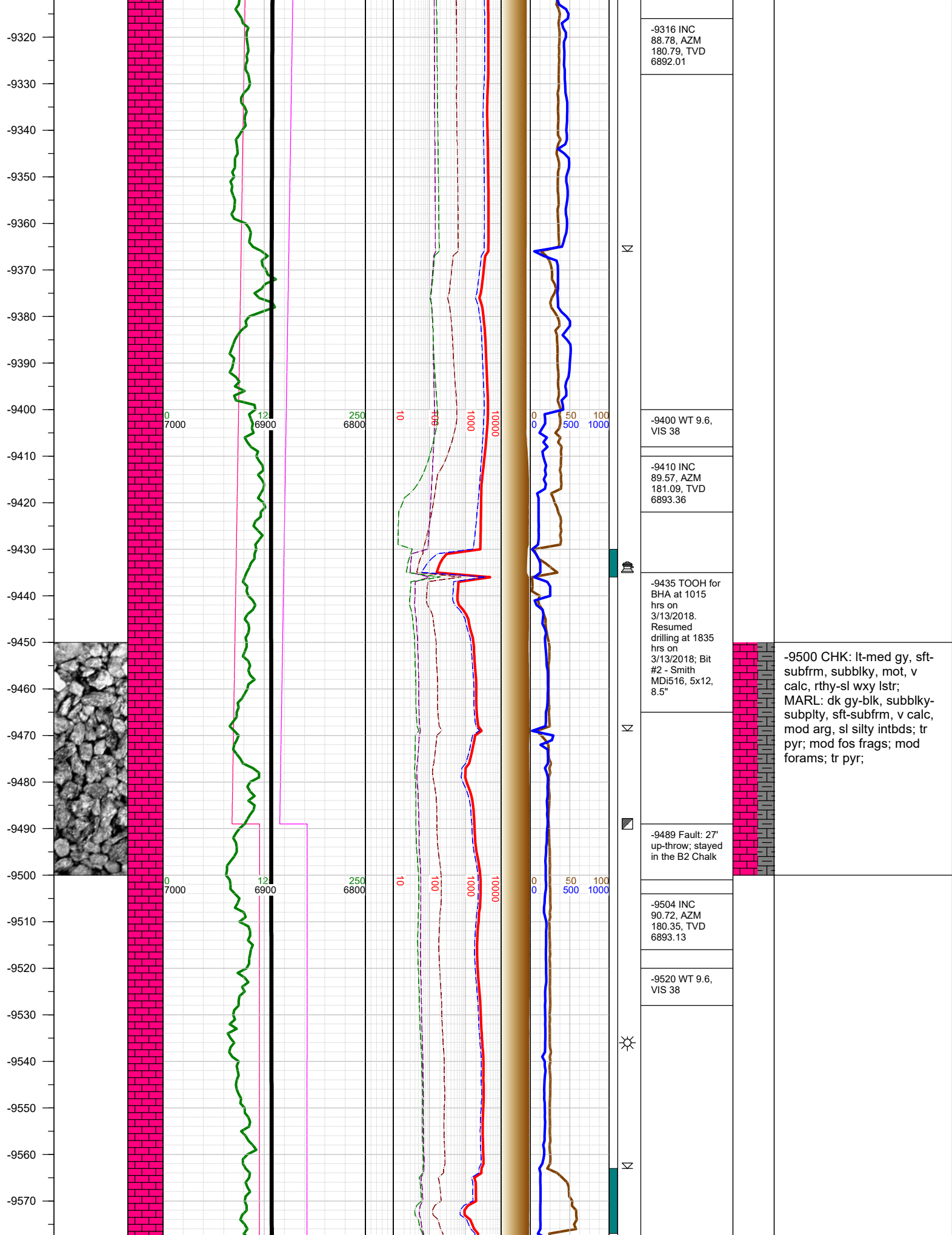


-8750 CHK: lt-med gy, sft-subfrm, subblky, mot, v calc, rthy-sl wxy lstr; MARL: dk gy-blk, subblky-subply, sft-subfrm, v calc, mod arg, sl silty intbds; tr pyr; mod fos frags; mod forams;

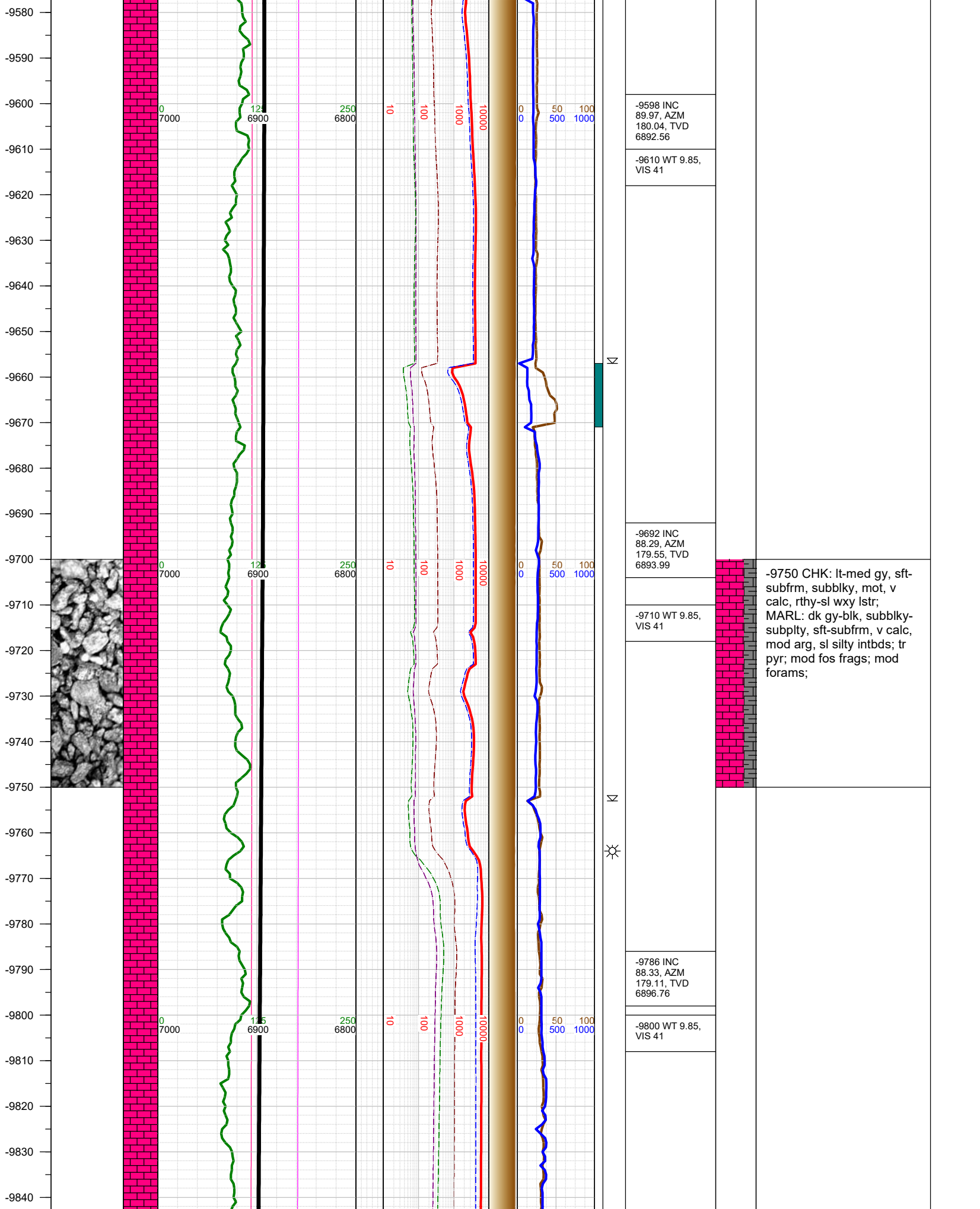


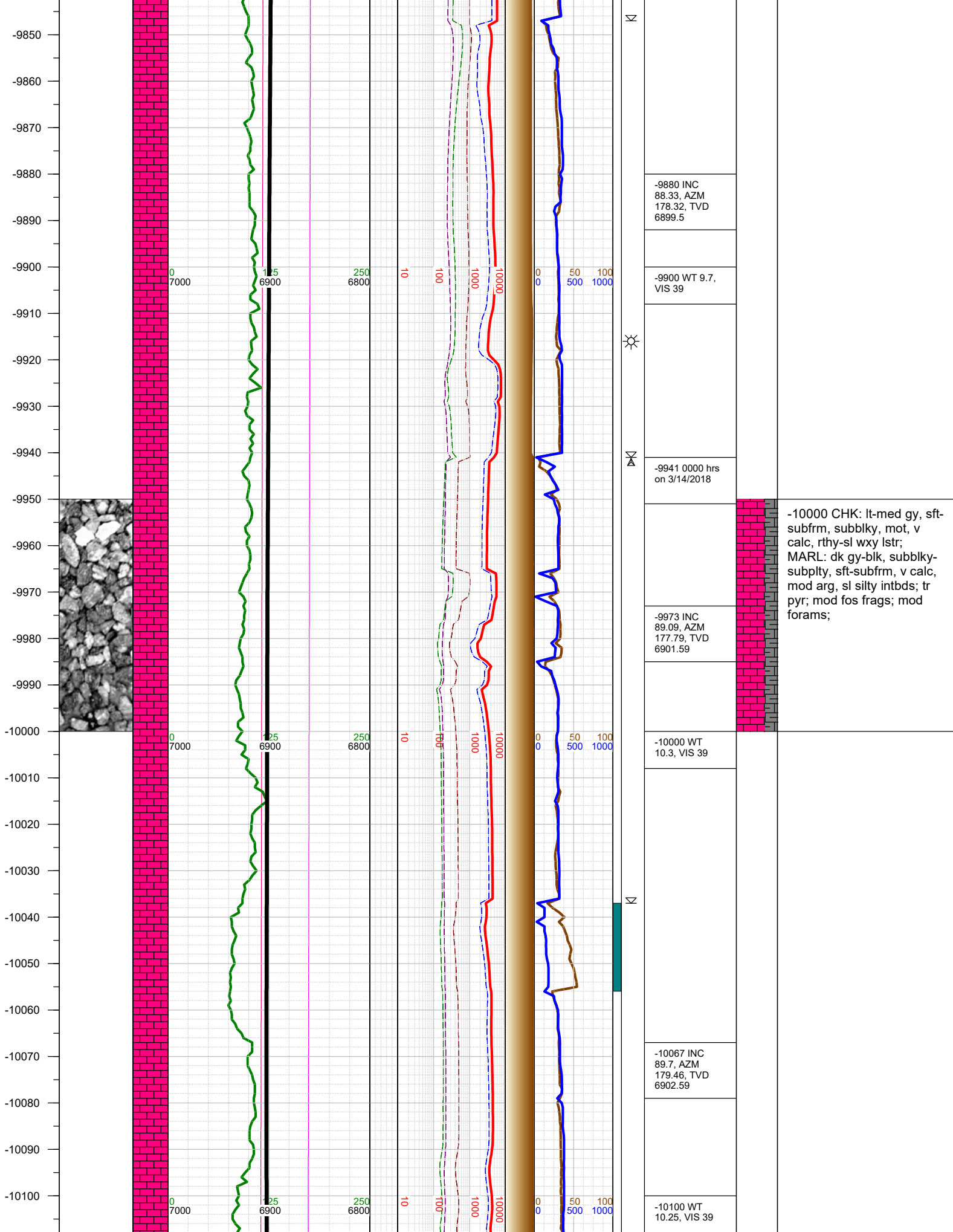


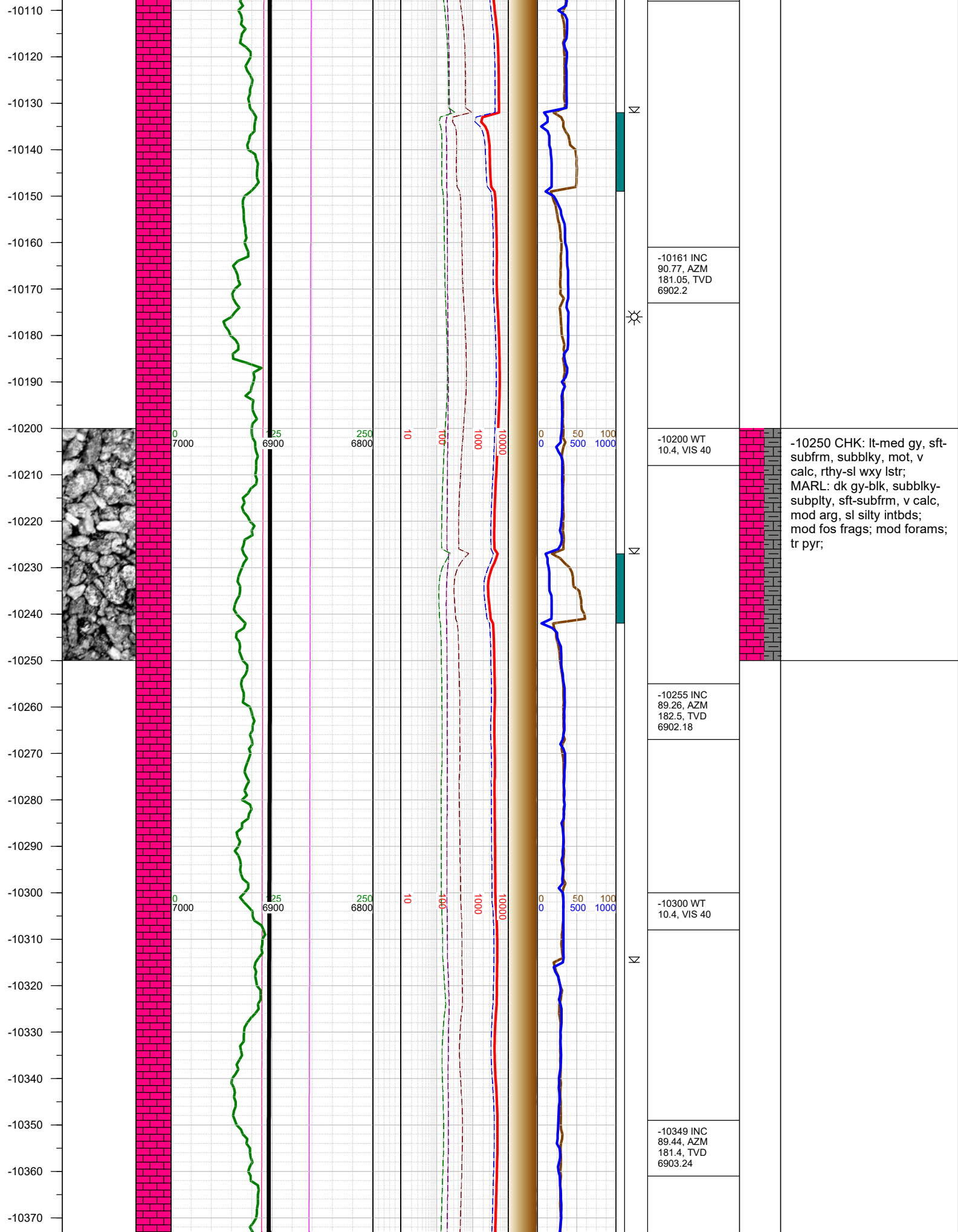




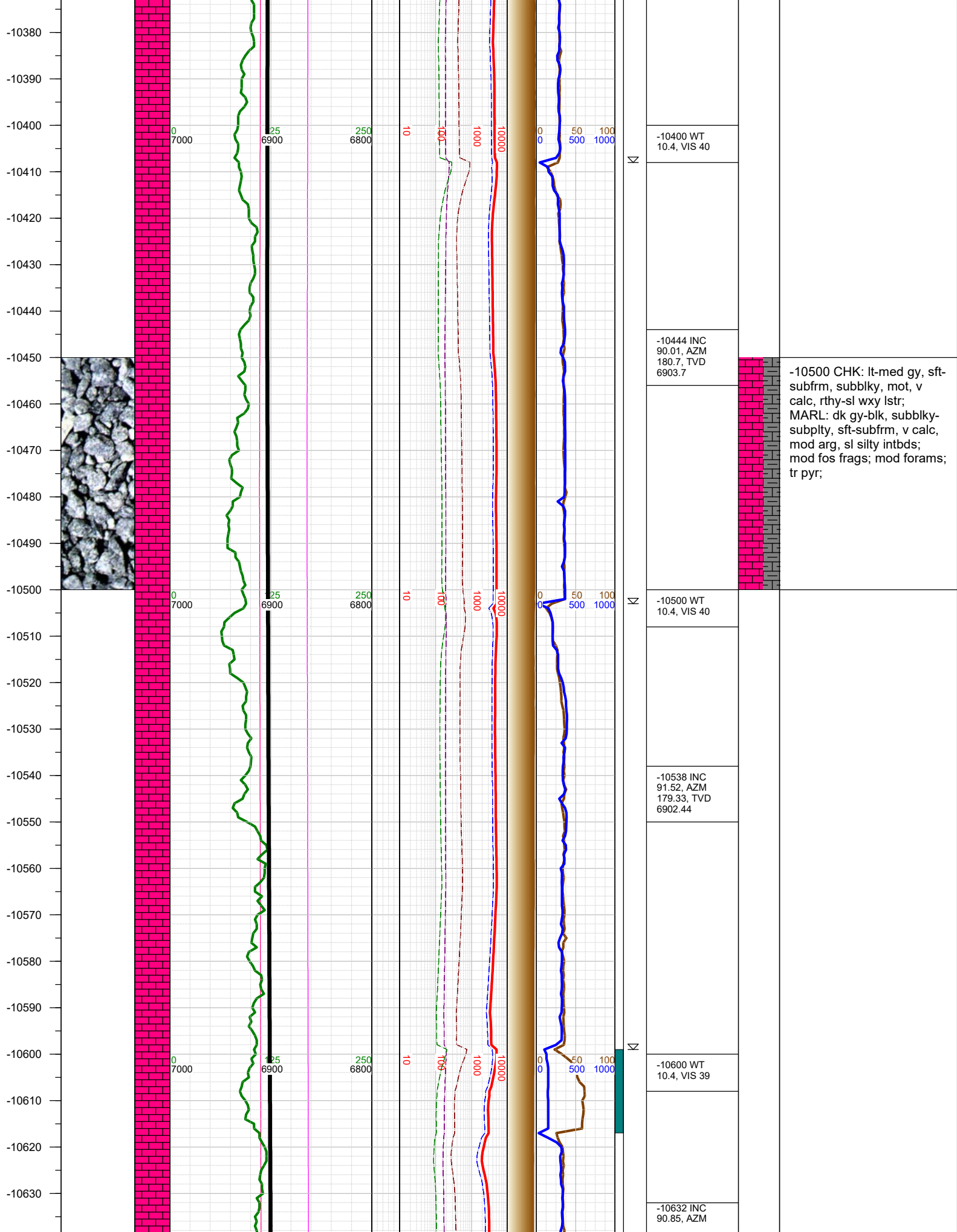


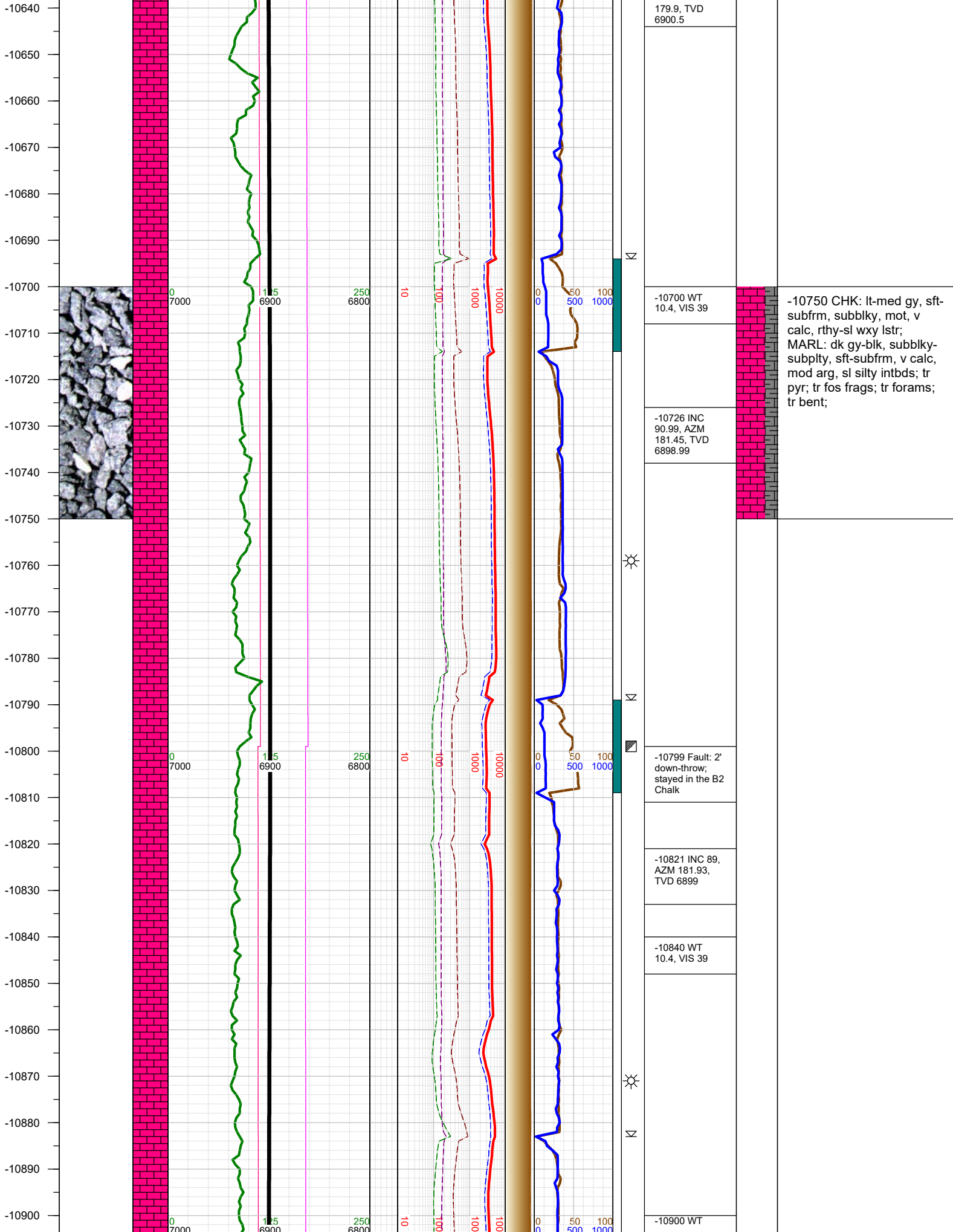




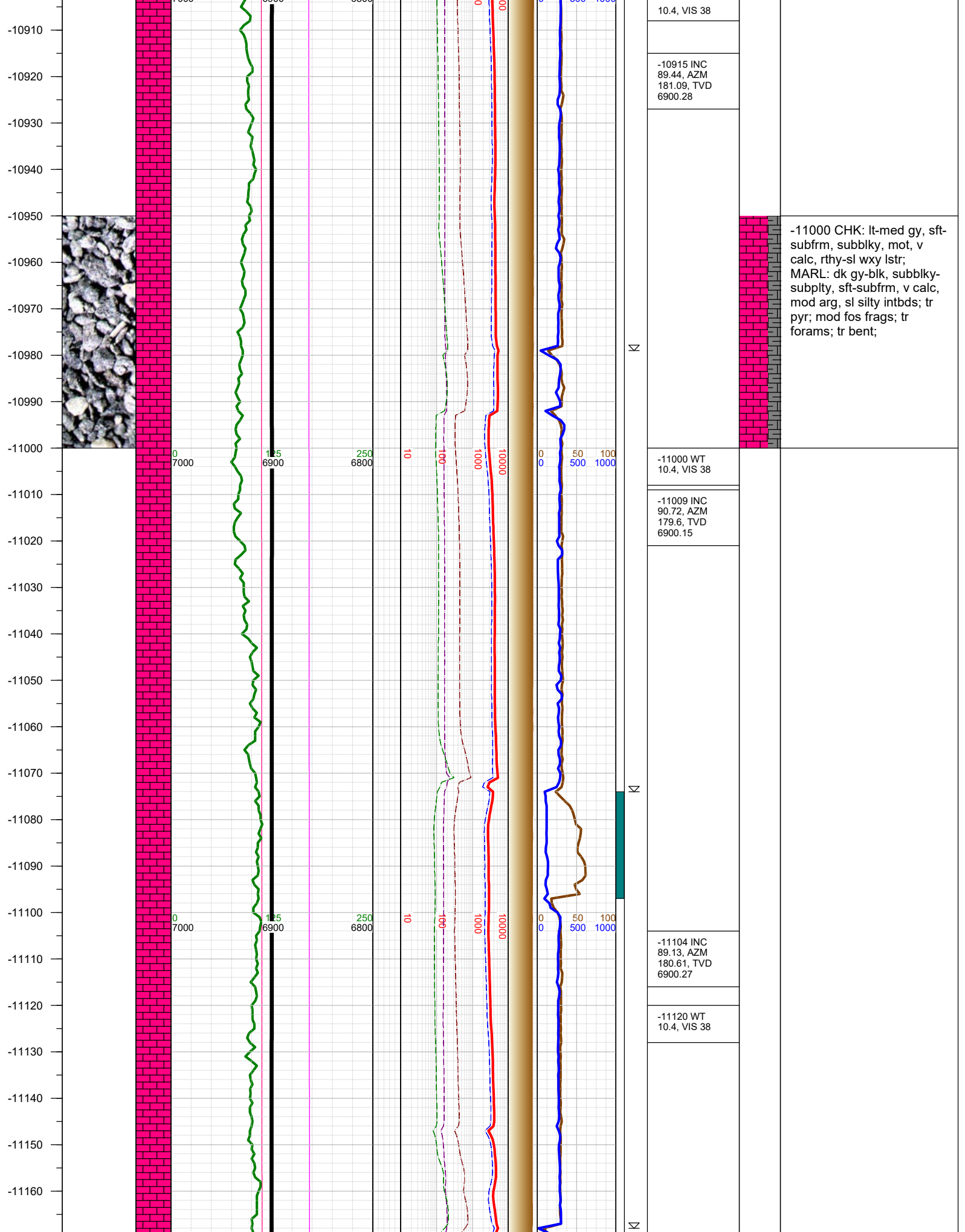




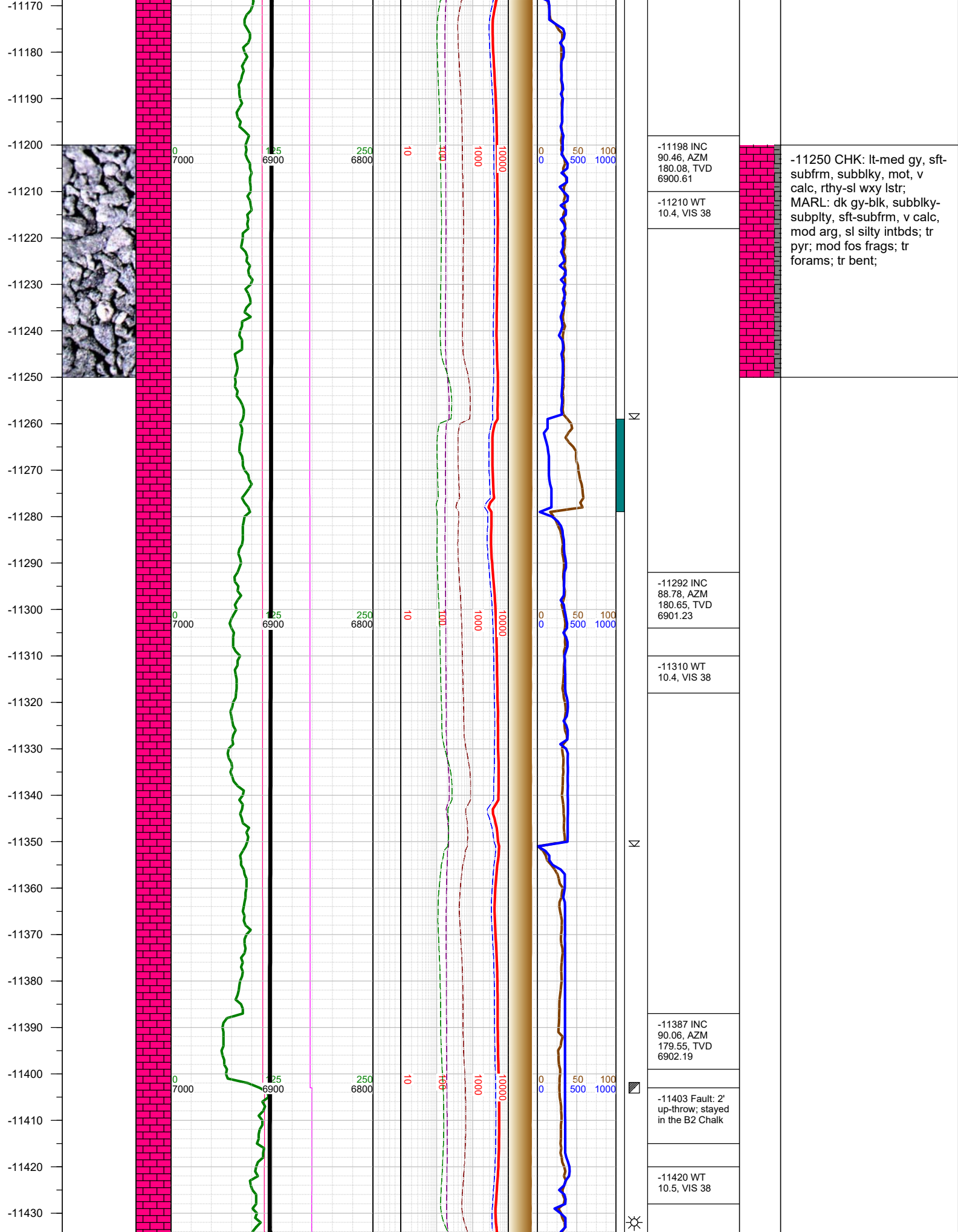




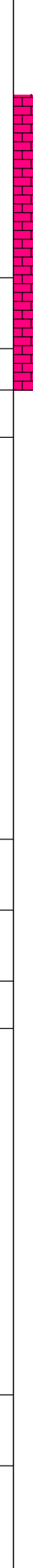
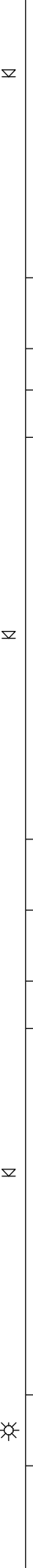
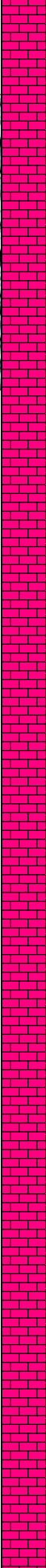
-10750 CHK: lt-med gy, sft-subfrm, subblky, mot, v calc, rthy-sl wxy lstr; MARL: dk gy-blk, subblky-subply, sft-subfrm, v calc, mod arg, sl silty intbds; tr pyr; tr fos frags; tr forams; tr bent;







-11440  
-11450  
-11460  
-11470  
-11480  
-11490  
-11500  
-11510  
-11520  
-11530  
-11540  
-11550  
-11560  
-11570  
-11580  
-11590  
-11600  
-11610  
-11620  
-11630  
-11640  
-11650  
-11660  
-11670  
-11680  
-11690



-11500 CHK: lt-med gy, sft-subfrm, subblky, mot, v calc, rthy-sl wxy lstr; MARL: dk gy-blk, subblky-subplty, sft-subfrm, v calc, mod arg, sl silty intbds; tr pyr; tr fos frags; tr forams; tr bent;

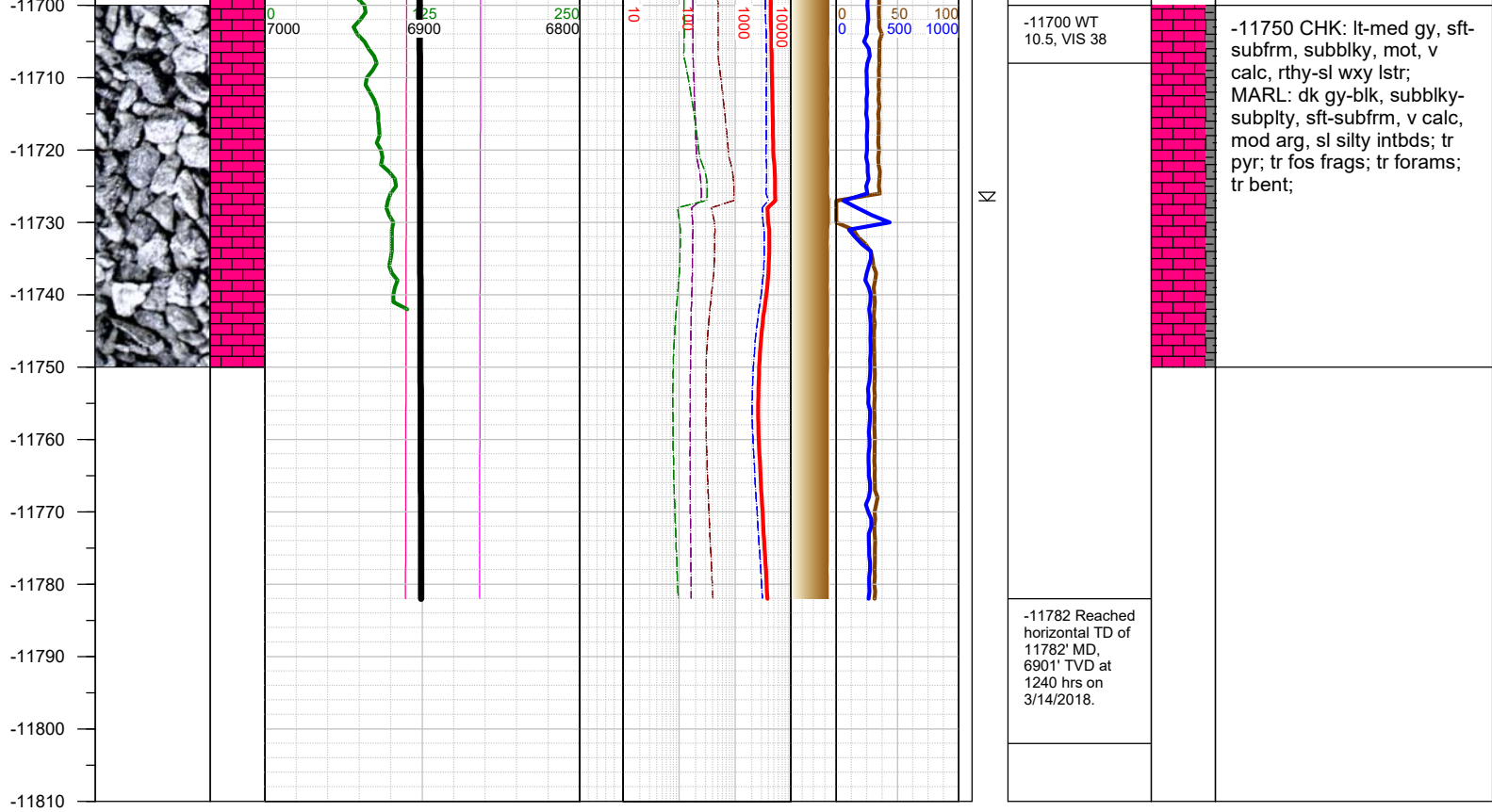
-11481 INC  
89.53, AZM  
181.31, TVD  
6902.53

-11500 WT  
10.5, VIS 38

-11576 INC  
90.1, AZM  
180.74, TVD  
6902.83

-11600 WT  
10.5, VIS 38

-11670 INC  
90.72, AZM  
179.95, TVD  
6902.16



TOTAL DEPTH = 11782'

Thank you for using Earth Science Agency