

OPERATOR: **Extraction Oil & Gas**

WELL NAME: **WS Sunrise C1-5-5**

FIELD NAME: DJ Basin - Wattenberg

DRILLING RIG: Patterson 346

API #: 05-123-46045

LAT/LONG: 40.43719, -104.68374

SURFACE HOLE: SWSE S32-T6N-R65W, 250' FSL, 1686' FEL

BOTTOM HOLE: S5-T5N-R65W, 460' FSL, 1320' FEL



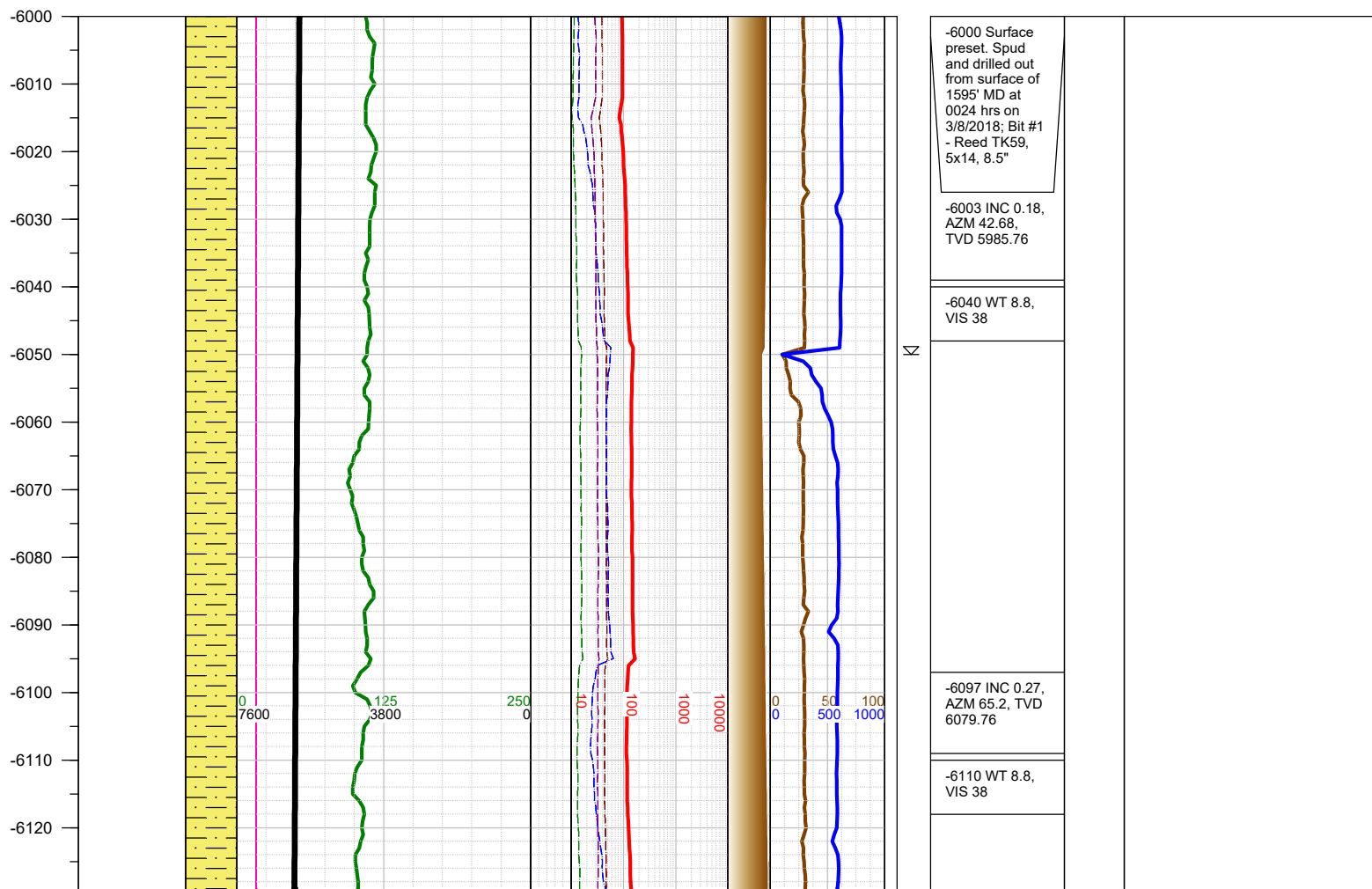
Earth Science Agency, LLC

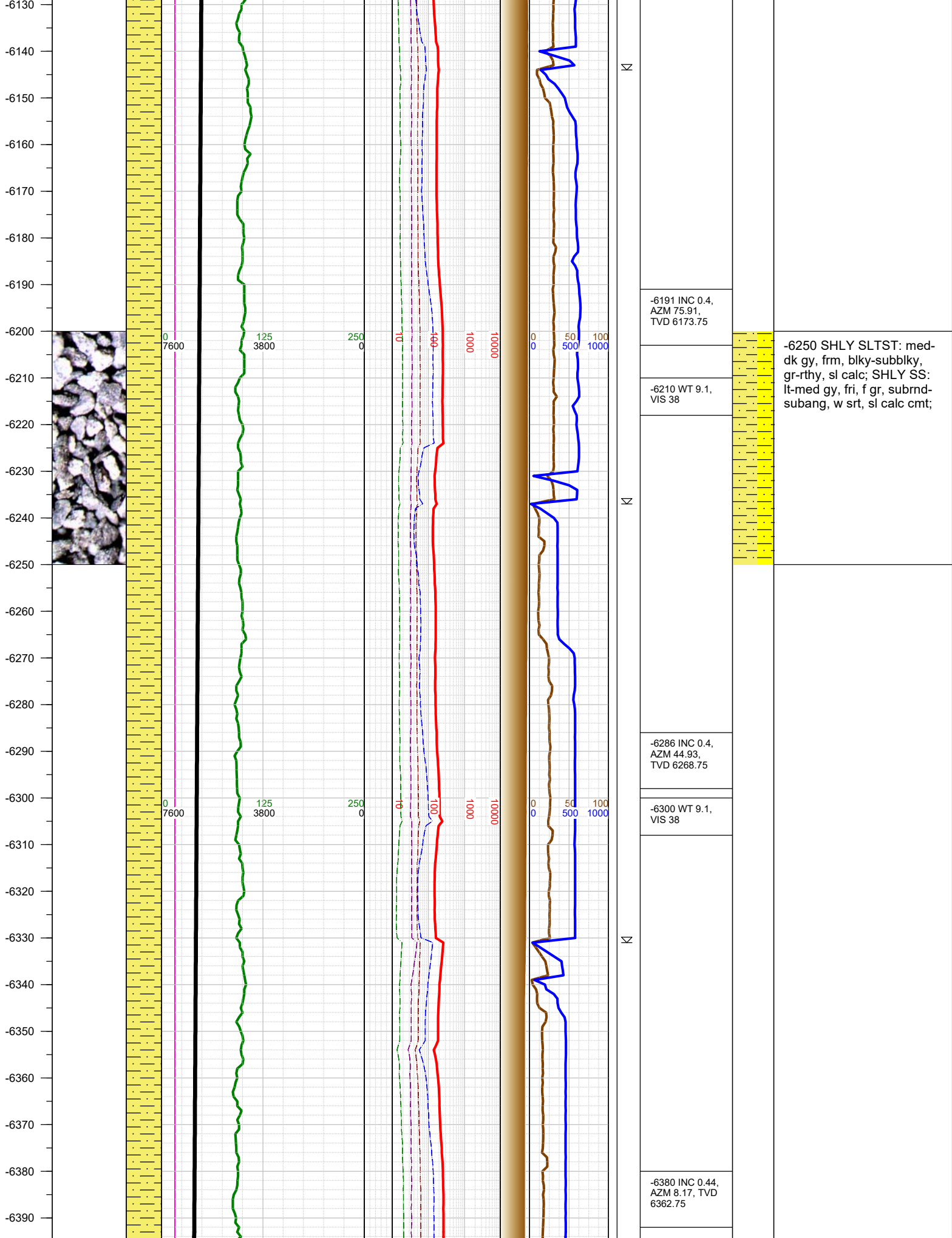
COUNTY: Weld  
STATE: Colorado  
GROUND ELEVATION: 4641'  
KELLY BUSHING: 4666'  
DRILLING FLUID: OBM  
TVD VS. MD: 7069' / 11942'  
SPUD DATE: March 8, 2018  
TD DATE: March 10, 2018  
  
DEPTHS LOGGED: 6000' - 11942'  
DATES LOGGED: March 8, 2018 - March 10, 2018  
GEOLOGISTS: Ross Apodaca, Levi Heintzelman  
SCALE: 5" = 100'

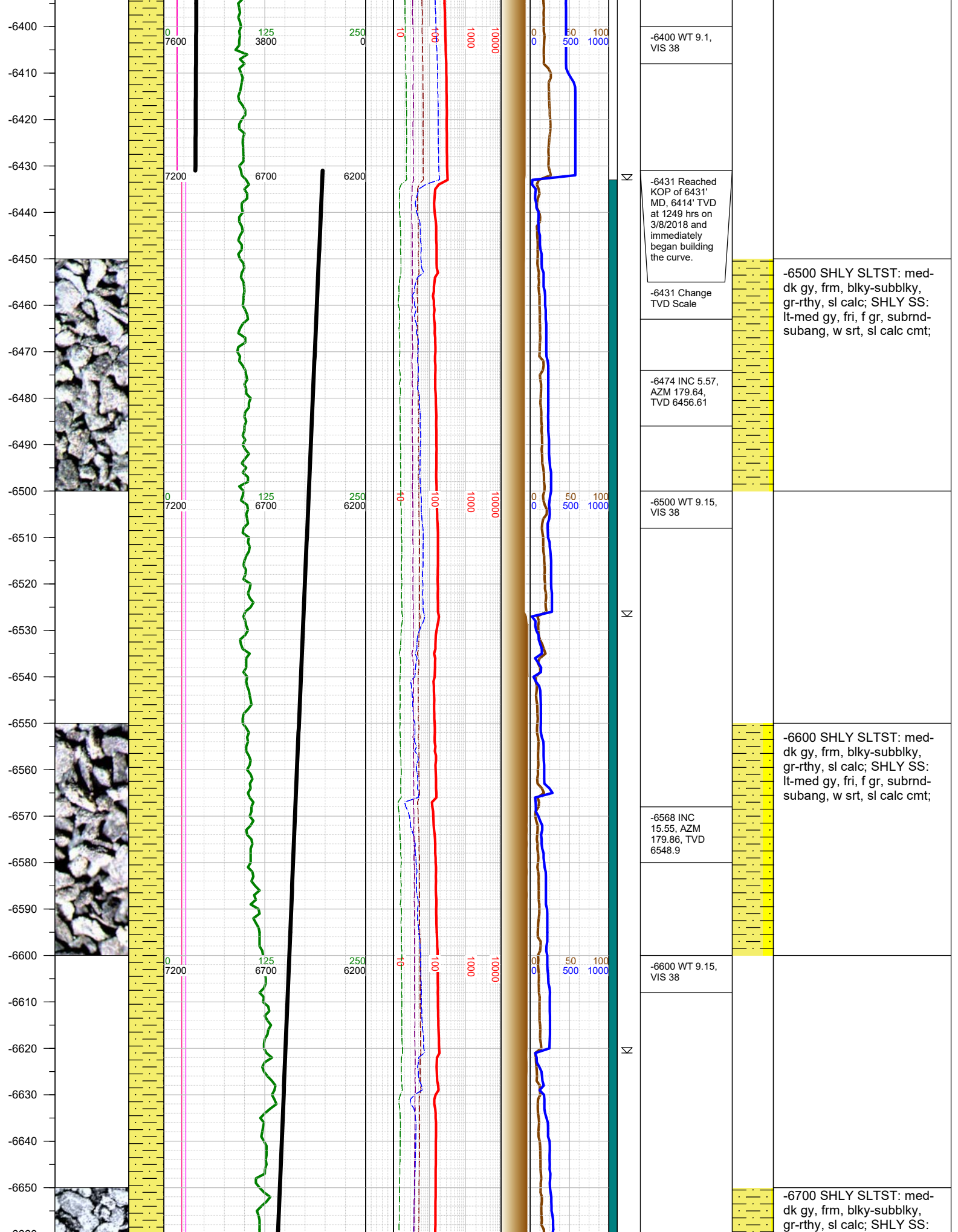
#### LEGEND



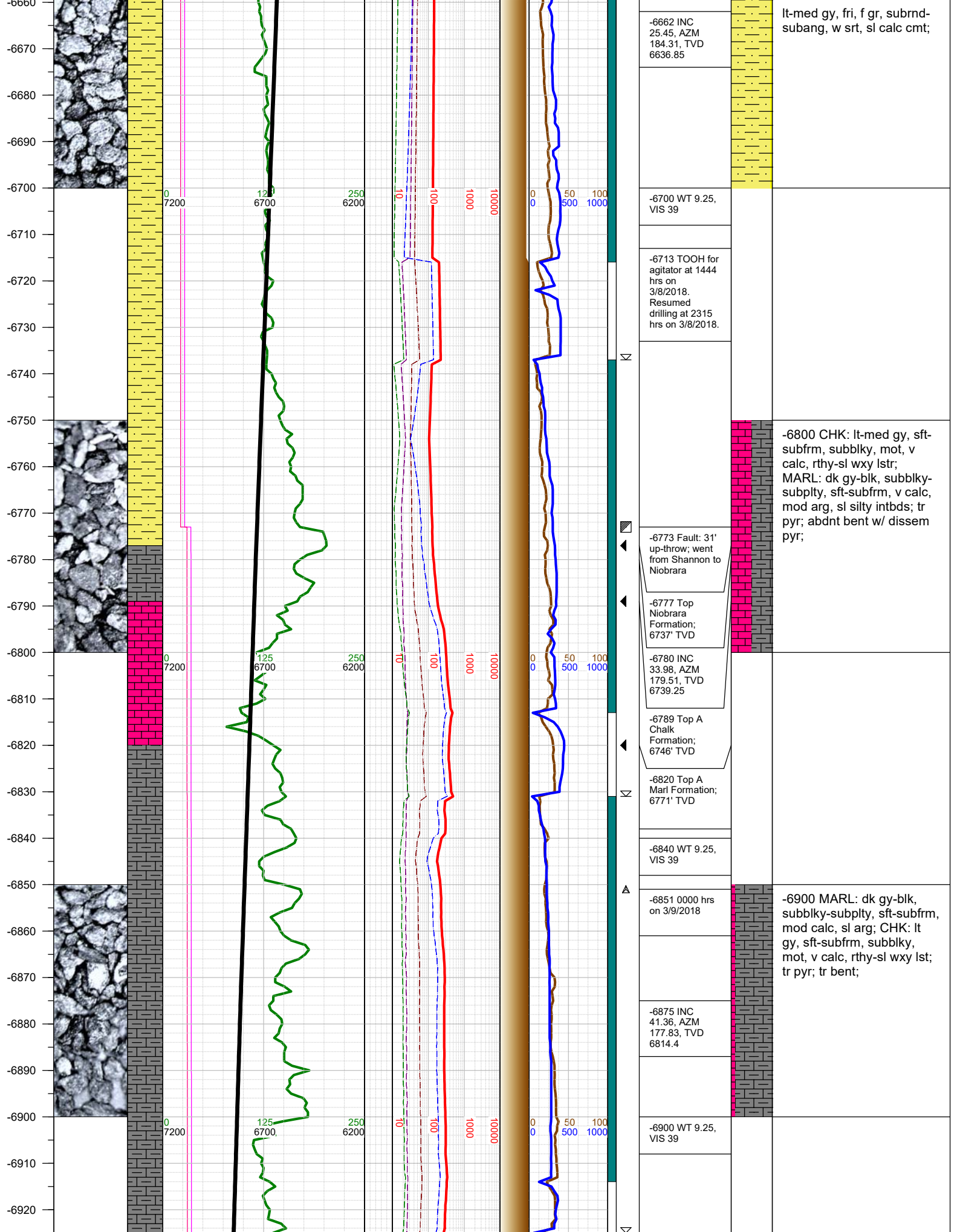
FORMATION  $\approx$  CONNECTION  $\Delta$  MIDNIGHT NEW BIT GAS SHOW FAULT

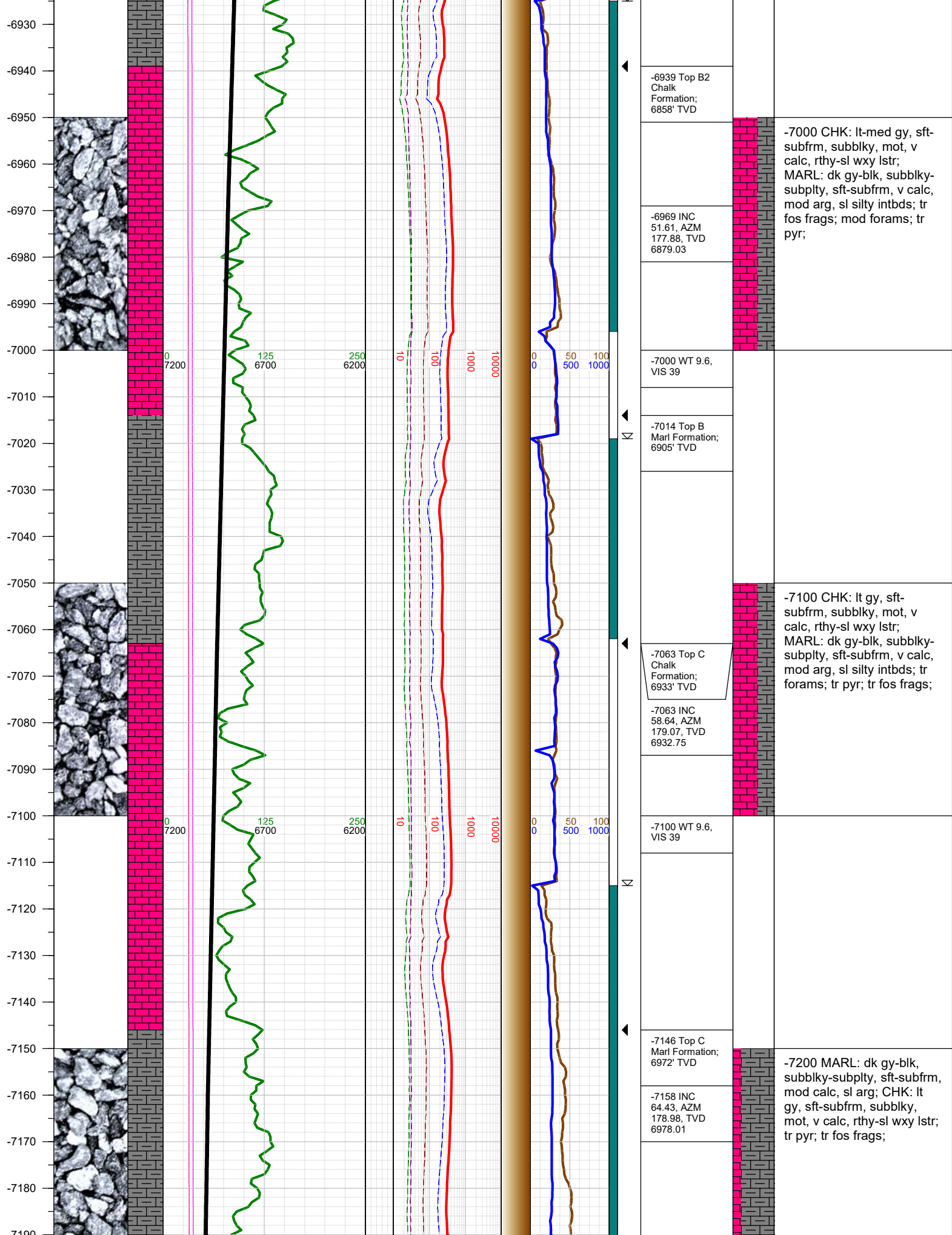


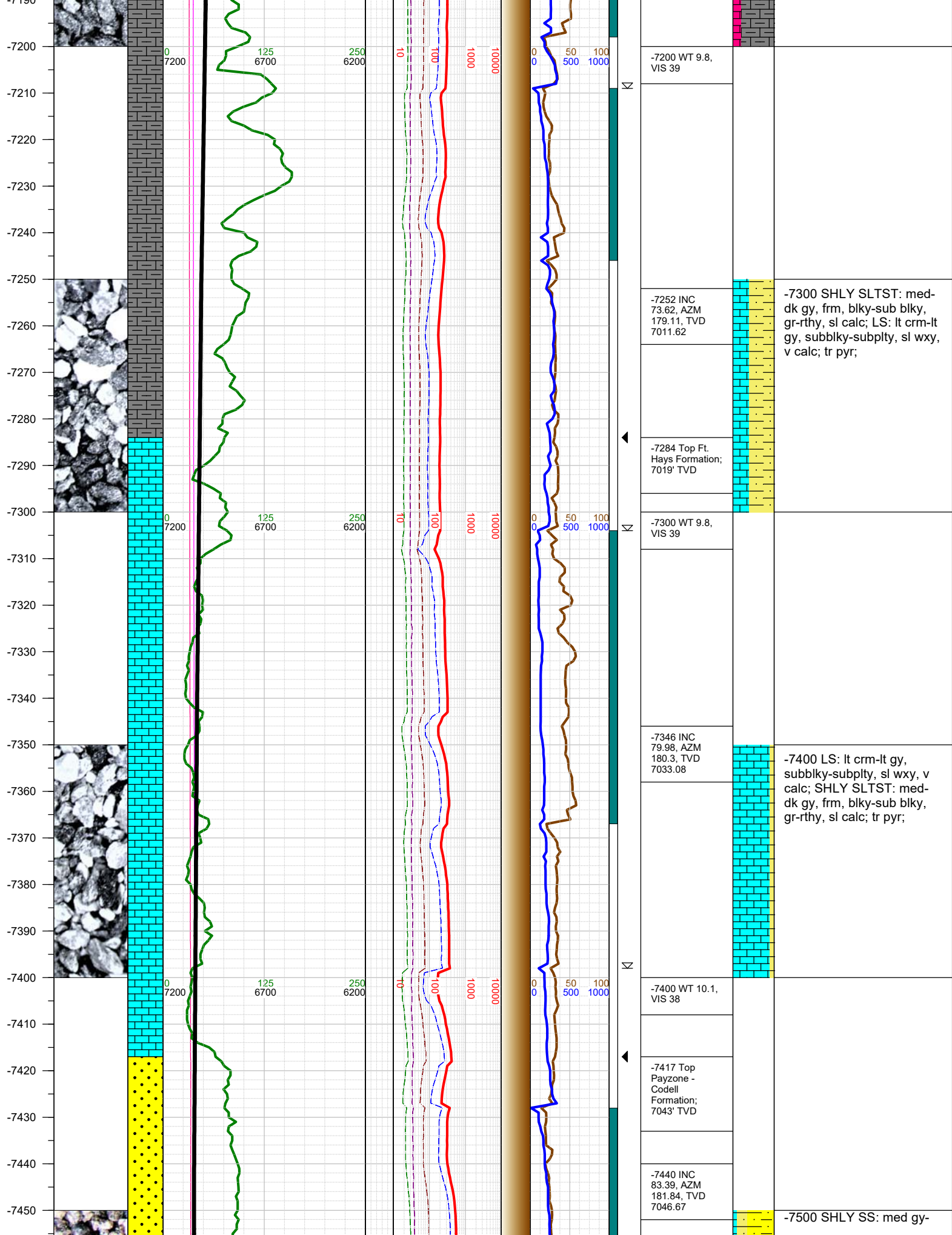




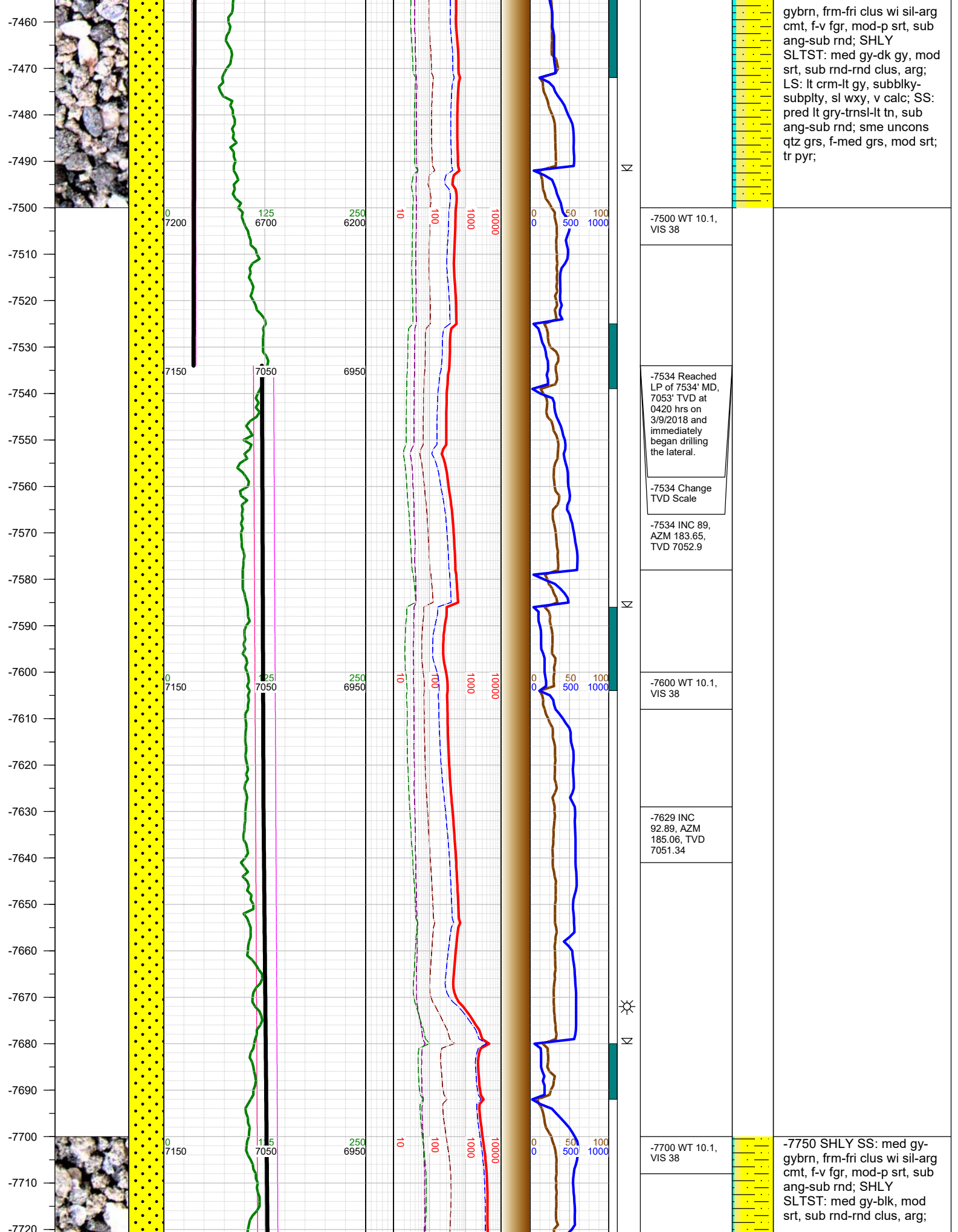


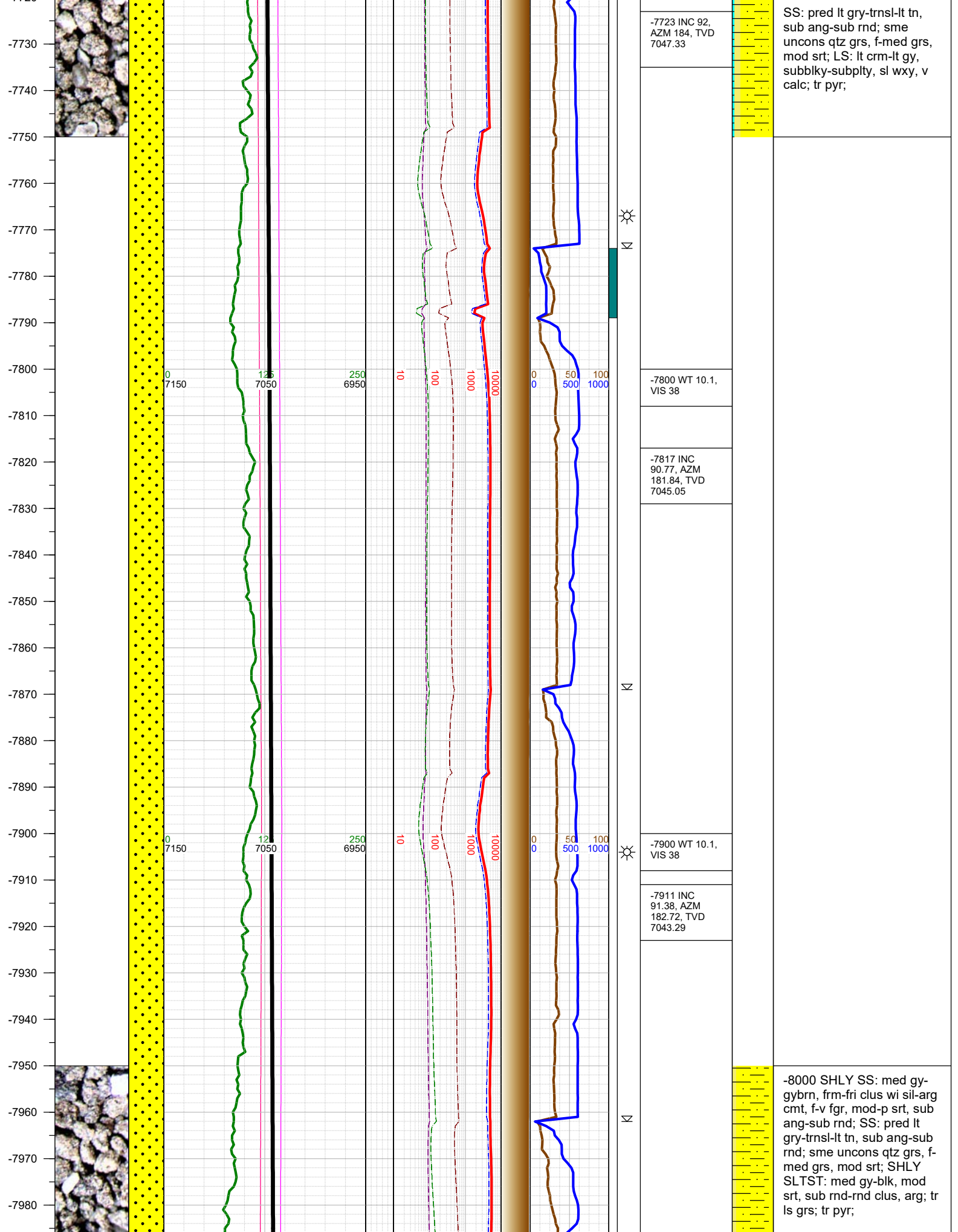




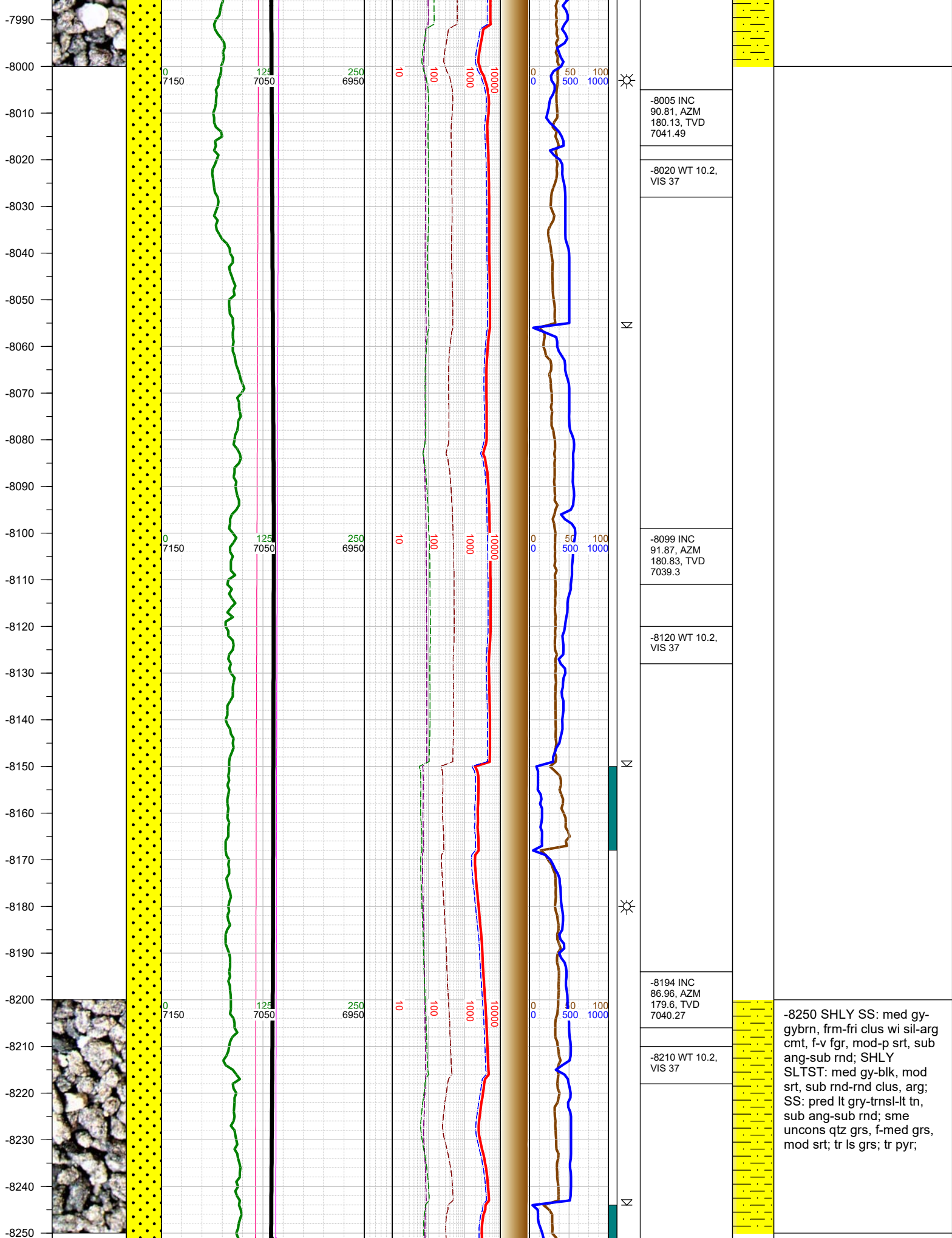


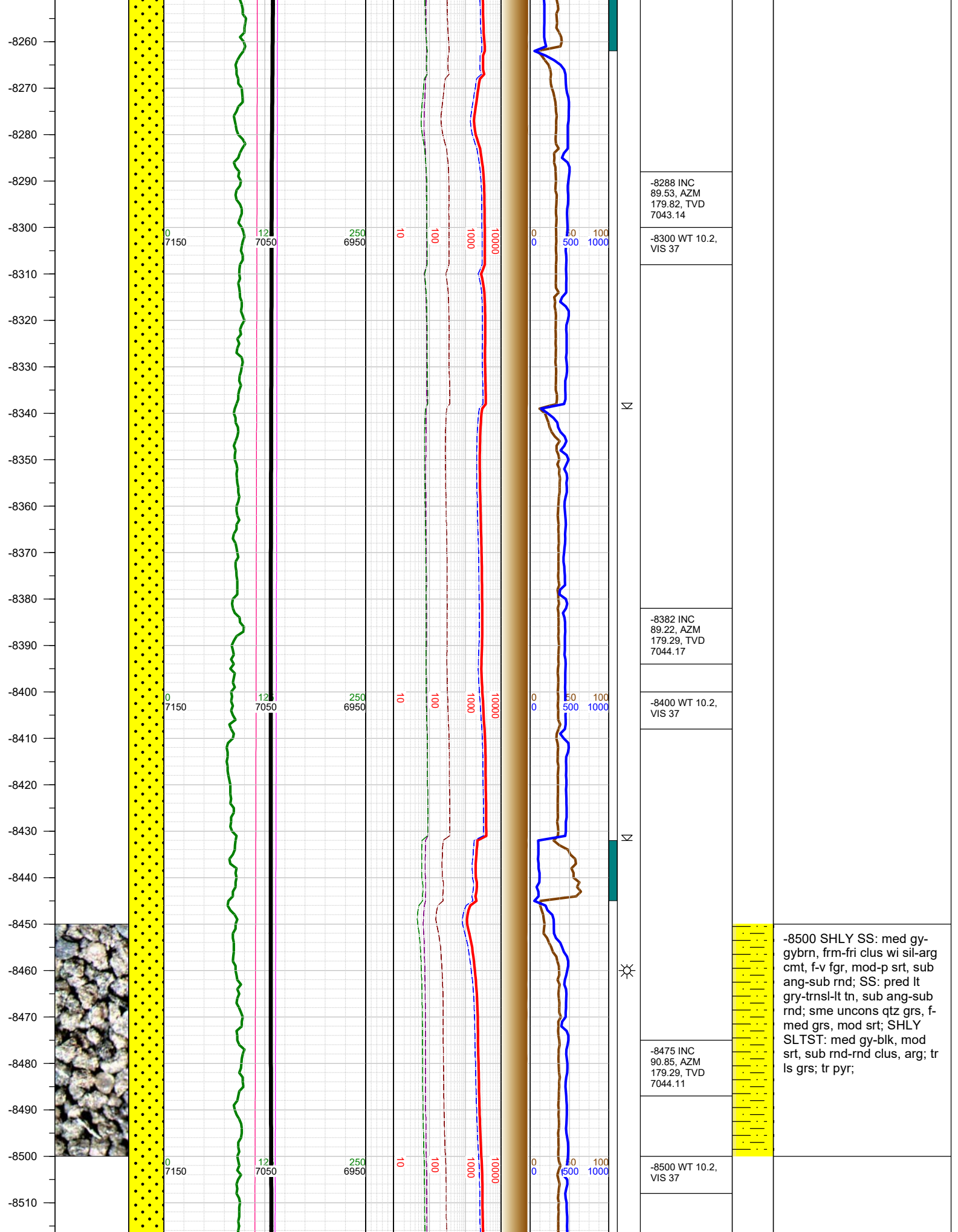




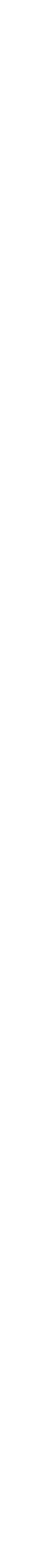
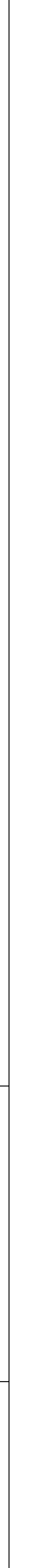
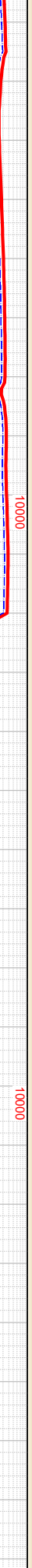
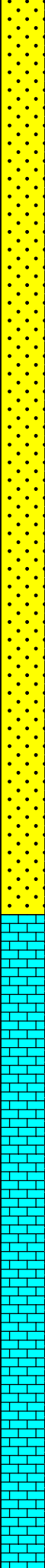








-8520  
-8530  
-8540  
-8550  
-8560  
-8570  
-8580  
-8590  
-8600  
-8610  
-8620  
-8630  
-8640  
-8650  
-8660  
-8670  
-8680  
-8690  
-8700  
-8710  
-8720  
-8730  
-8740  
-8750  
-8760  
-8770  
-8780



-8569 INC  
90.81, AZM  
178.89, TVD  
7042.75

-8600 WT 10.2,  
VIS 37

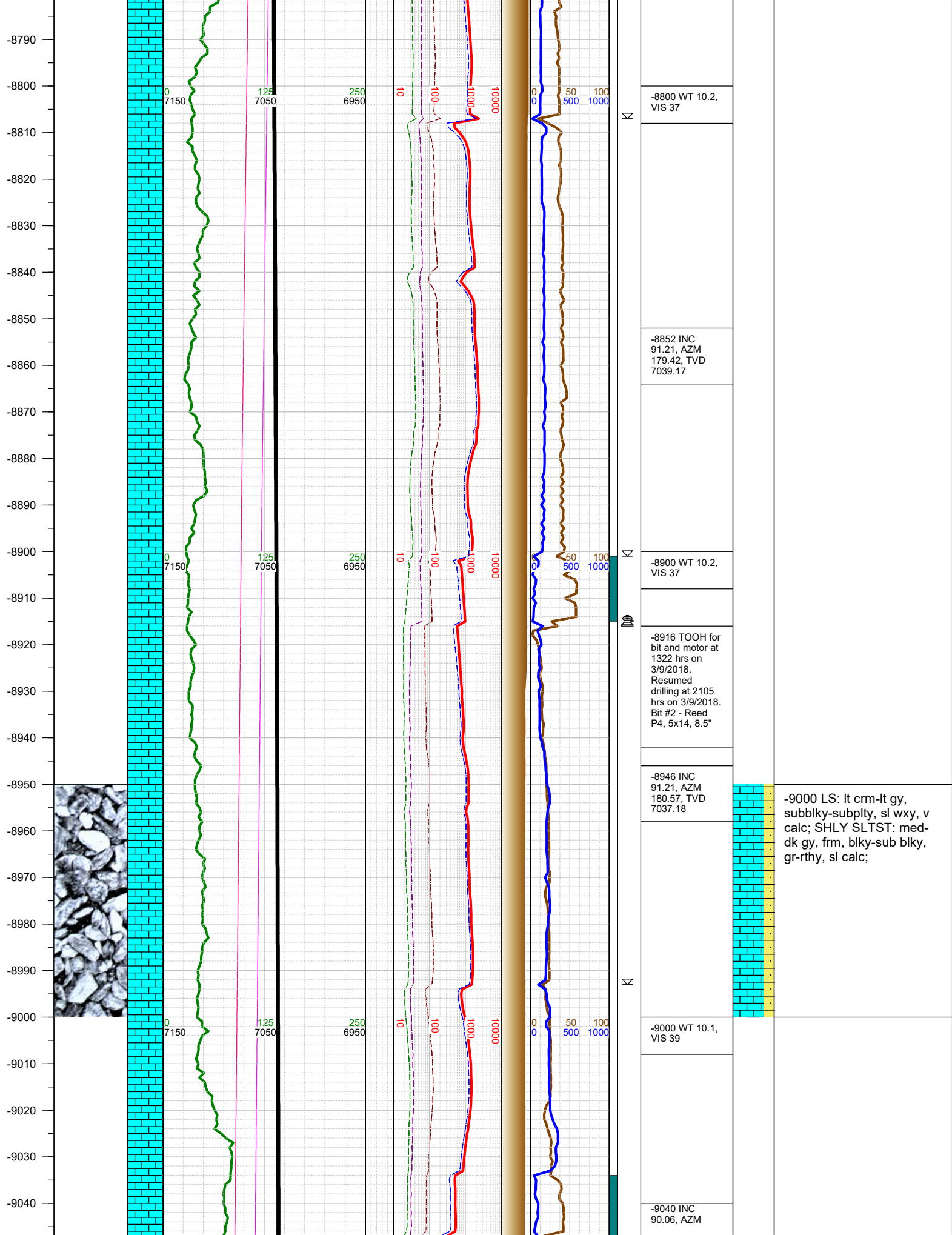
☀  
-8663 INC 90.1,  
AZM 179.82,  
TVD 7042.01

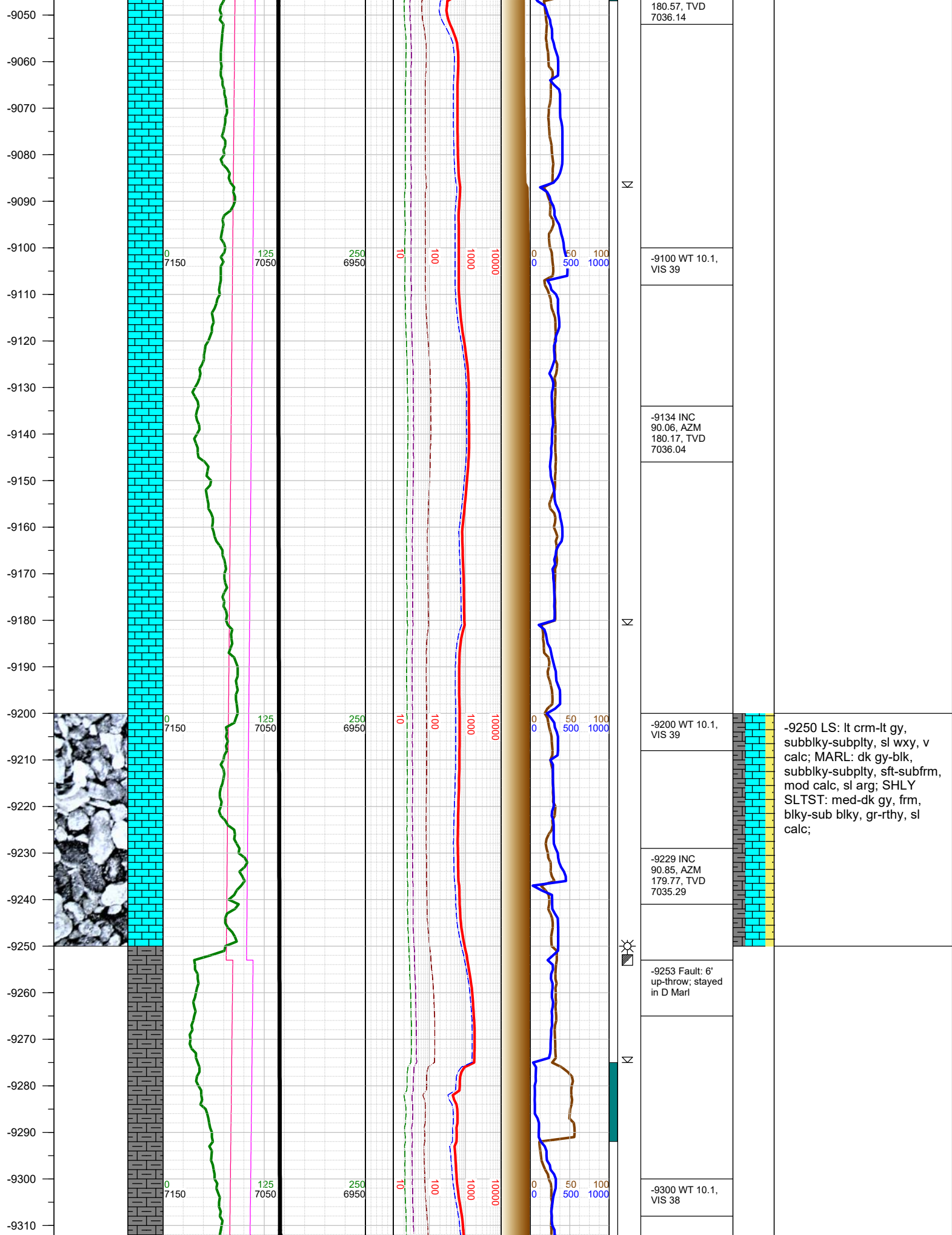
-8700 WT 10.2,  
VIS 37

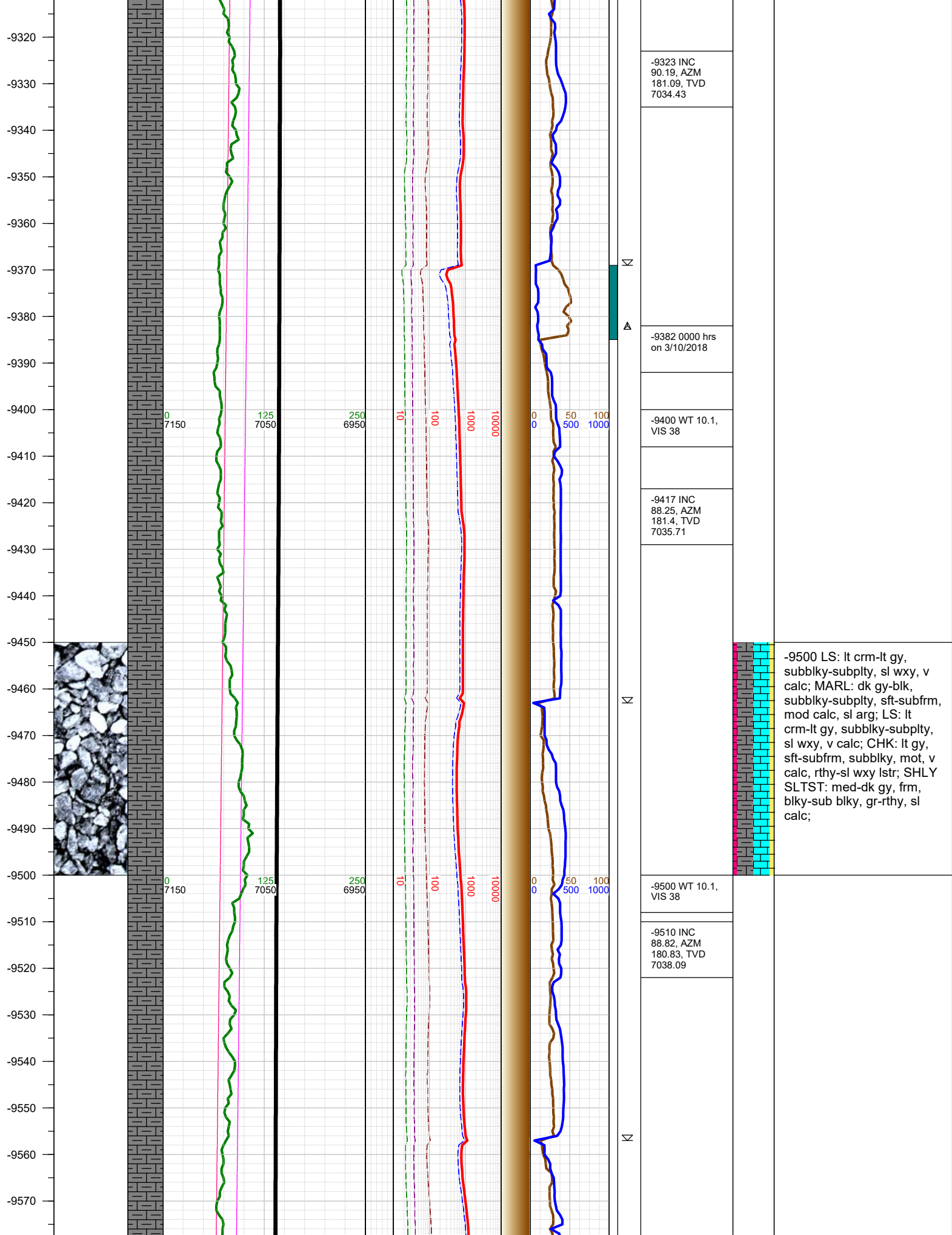
-8758 INC  
91.07, AZM  
180.26, TVD  
7041.04

-8750 LS: lt crm-lt gy,  
subblky-subplty, sl wxy, v  
calc; SHLY SLTST: med-  
dk gy, frm, blkly-sub blkly,  
gr-rthy, sl calc;

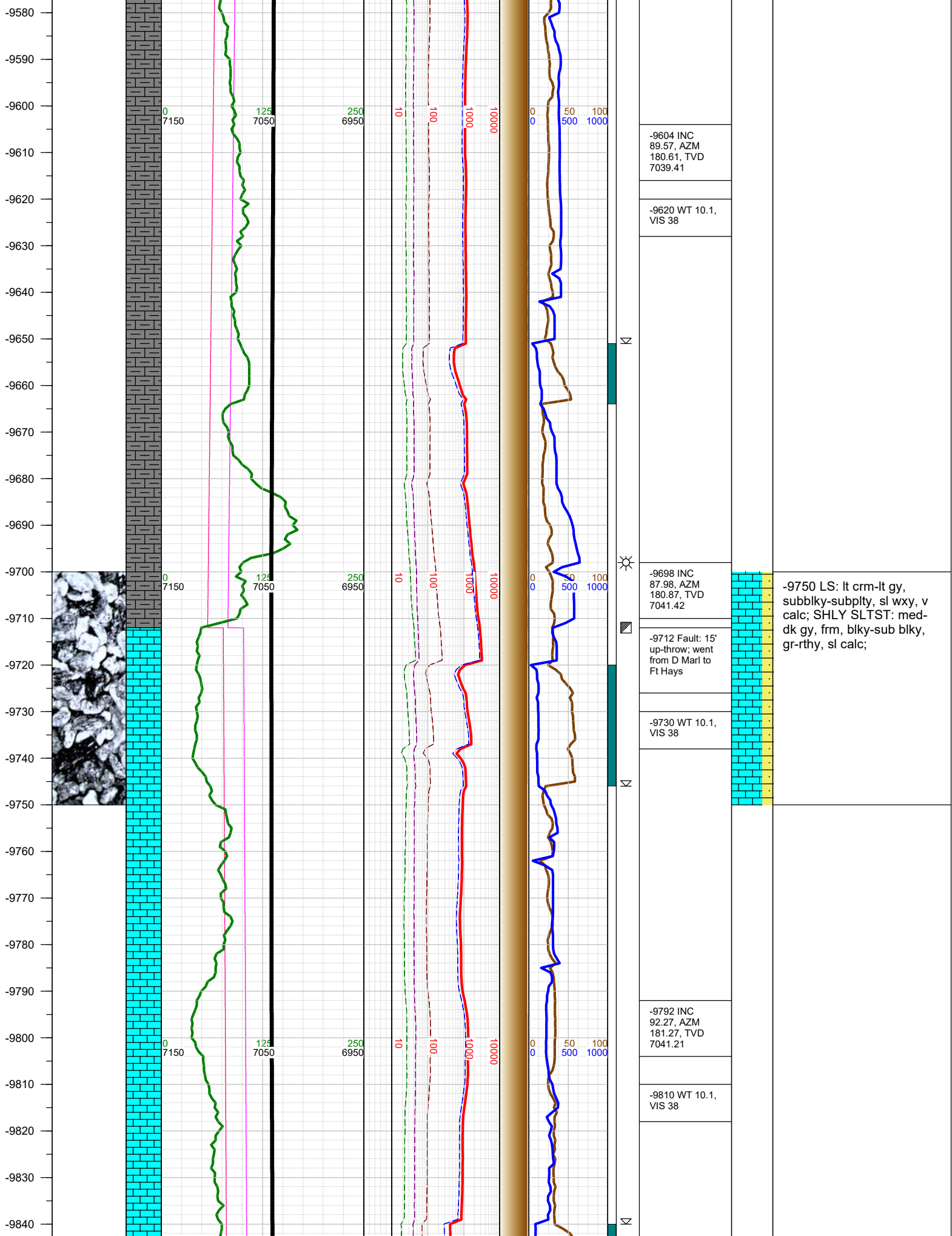


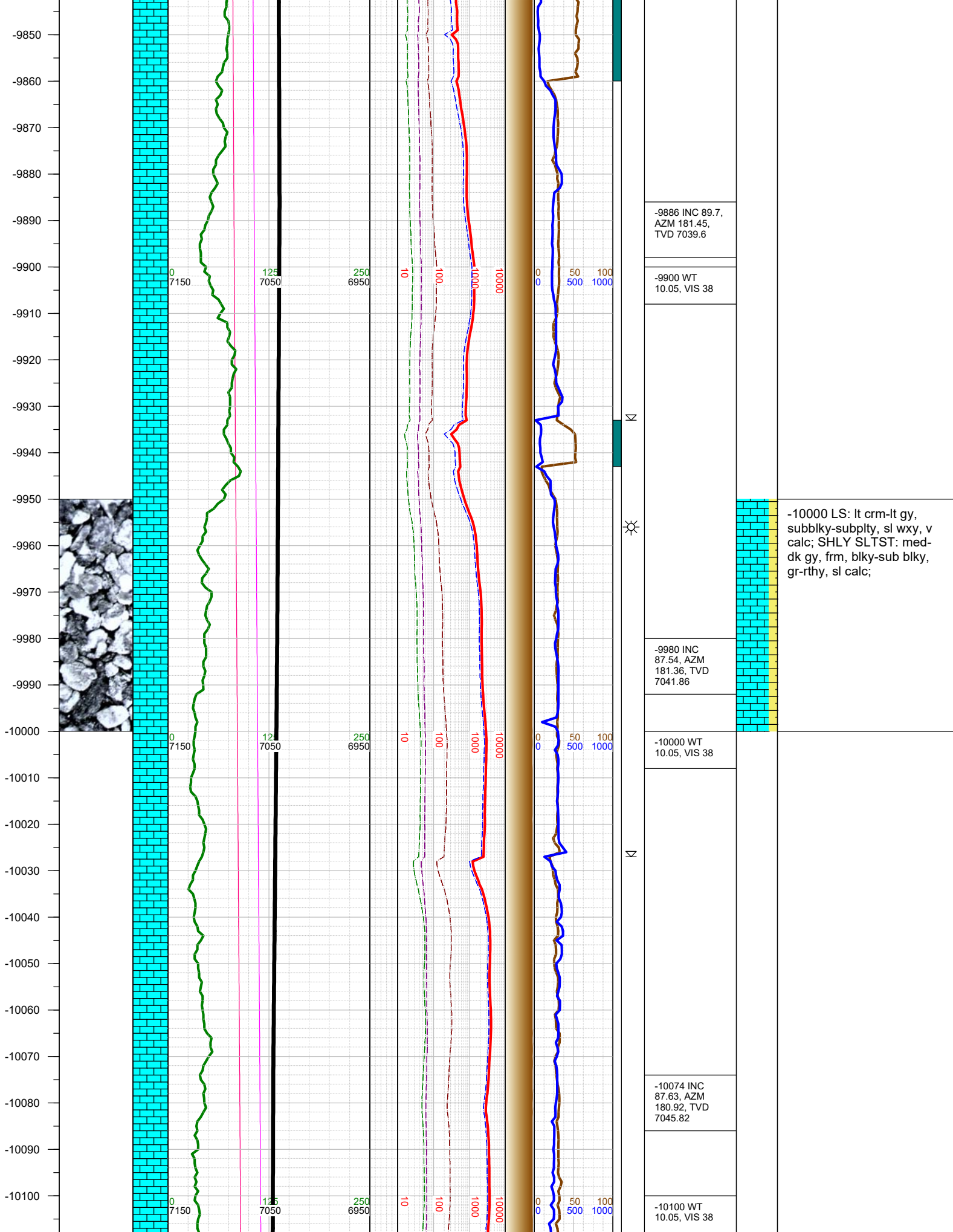


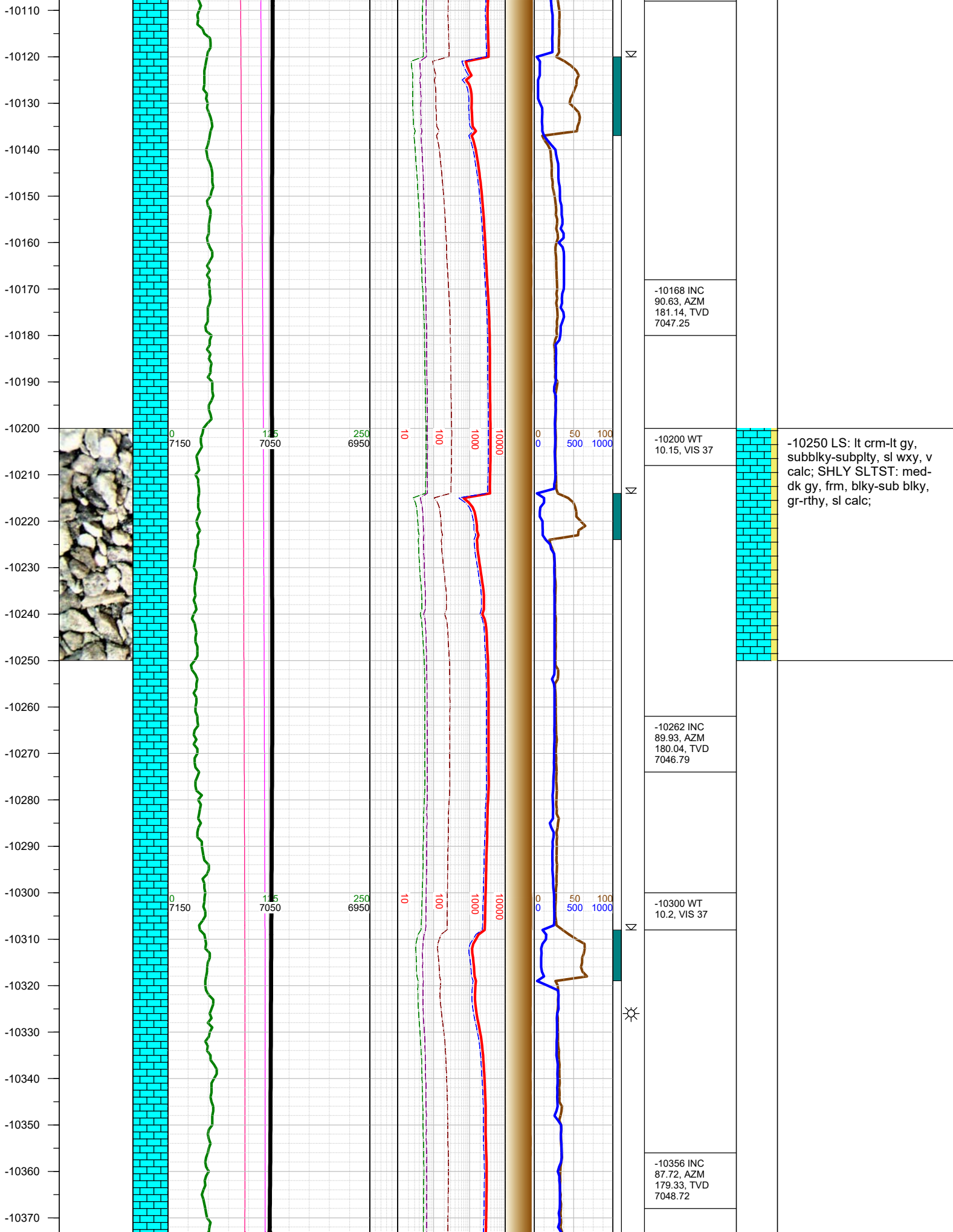












-10168 INC  
90.63, AZM  
181.14, TVD  
7047.25

-10200 WT  
10.15, VIS 37

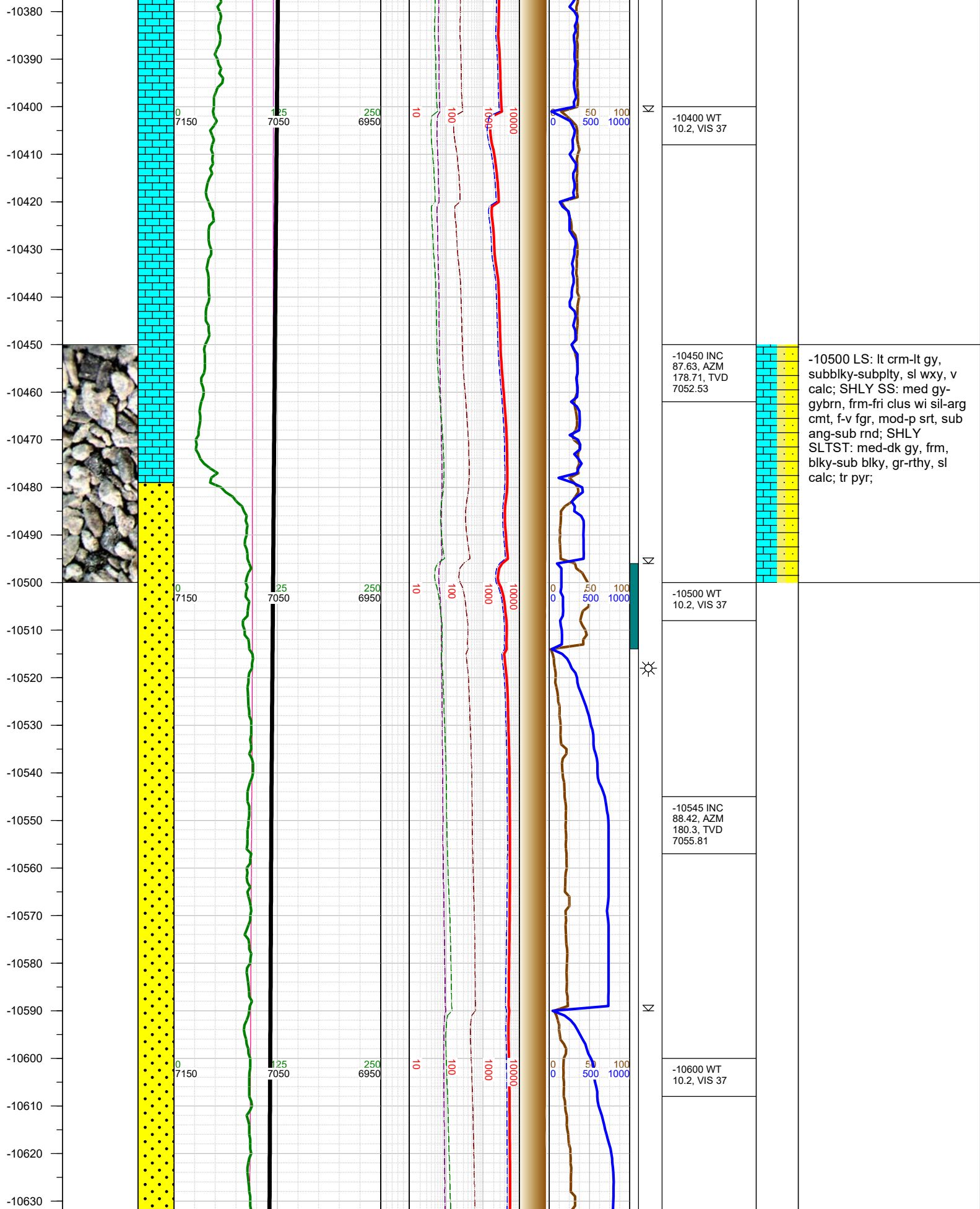
-10262 INC  
89.93, AZM  
180.04, TVD  
7046.79

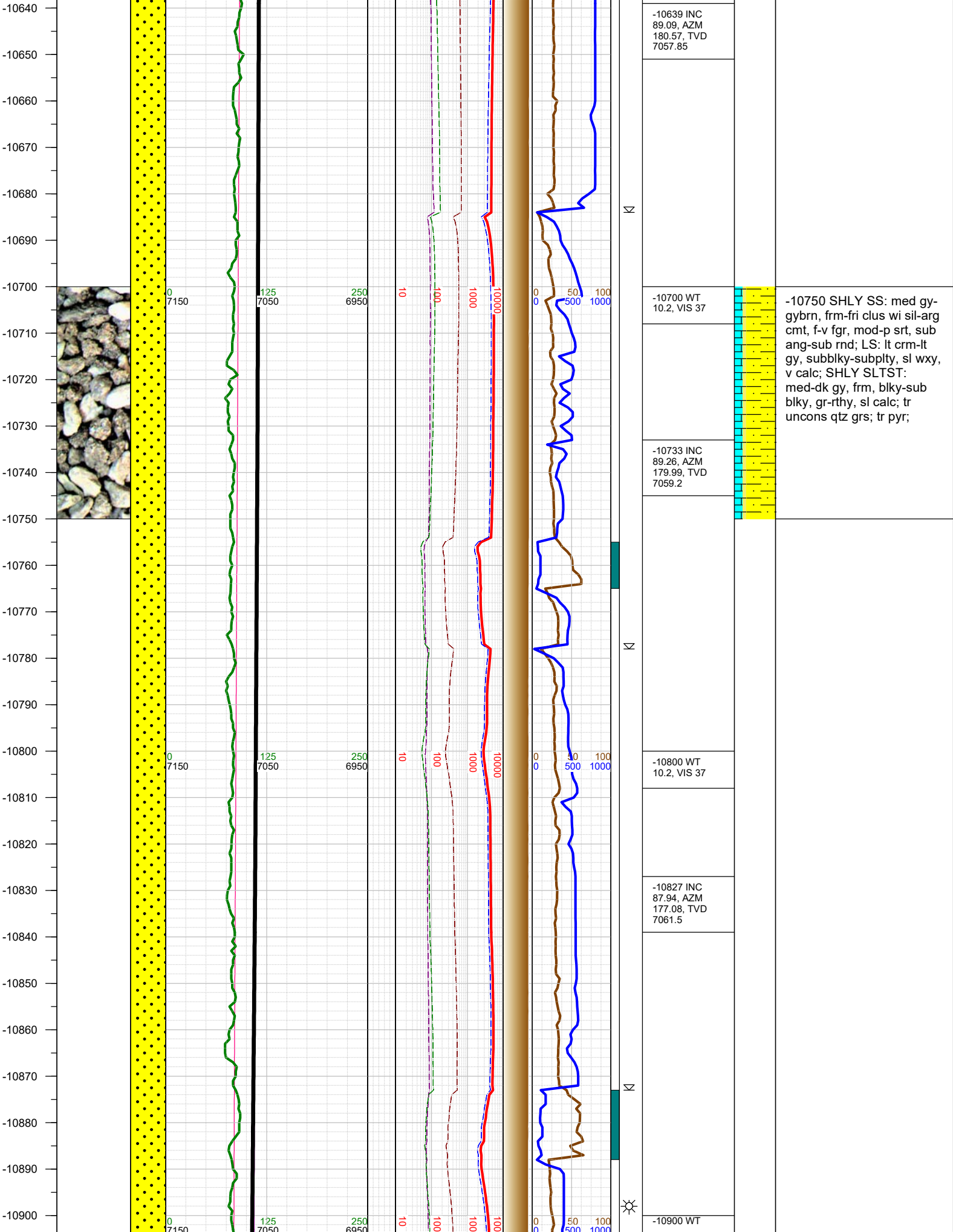
-10300 WT  
10.2, VIS 37

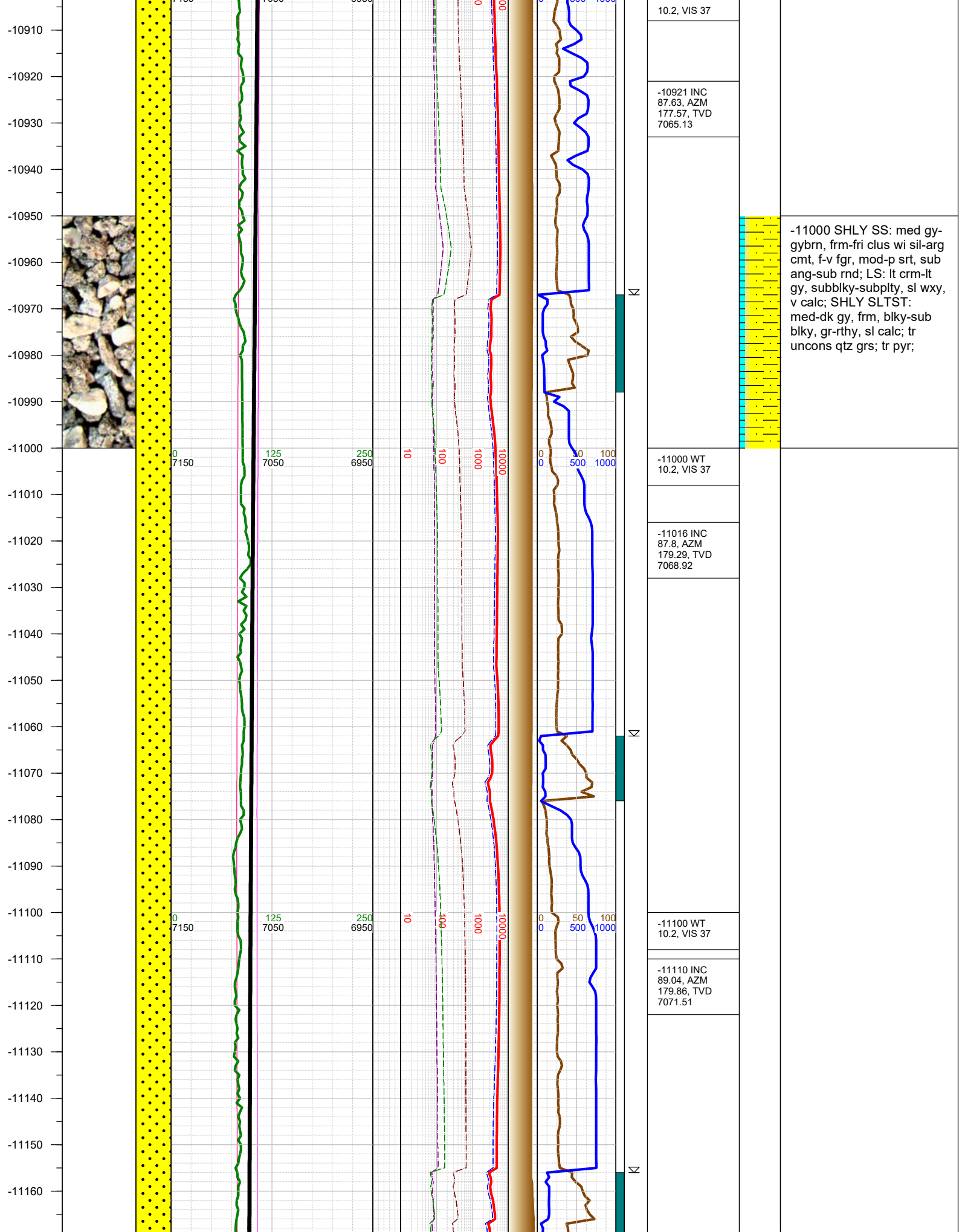
-10356 INC  
87.72, AZM  
179.33, TVD  
7048.72

-10250 LS: lt crm-lt gy,  
subbly-subply, sl wxy, v  
calc; SHLY SLTST: med-  
dk gy, frm, bly-sub bly,  
gr-rthy, sl calc;

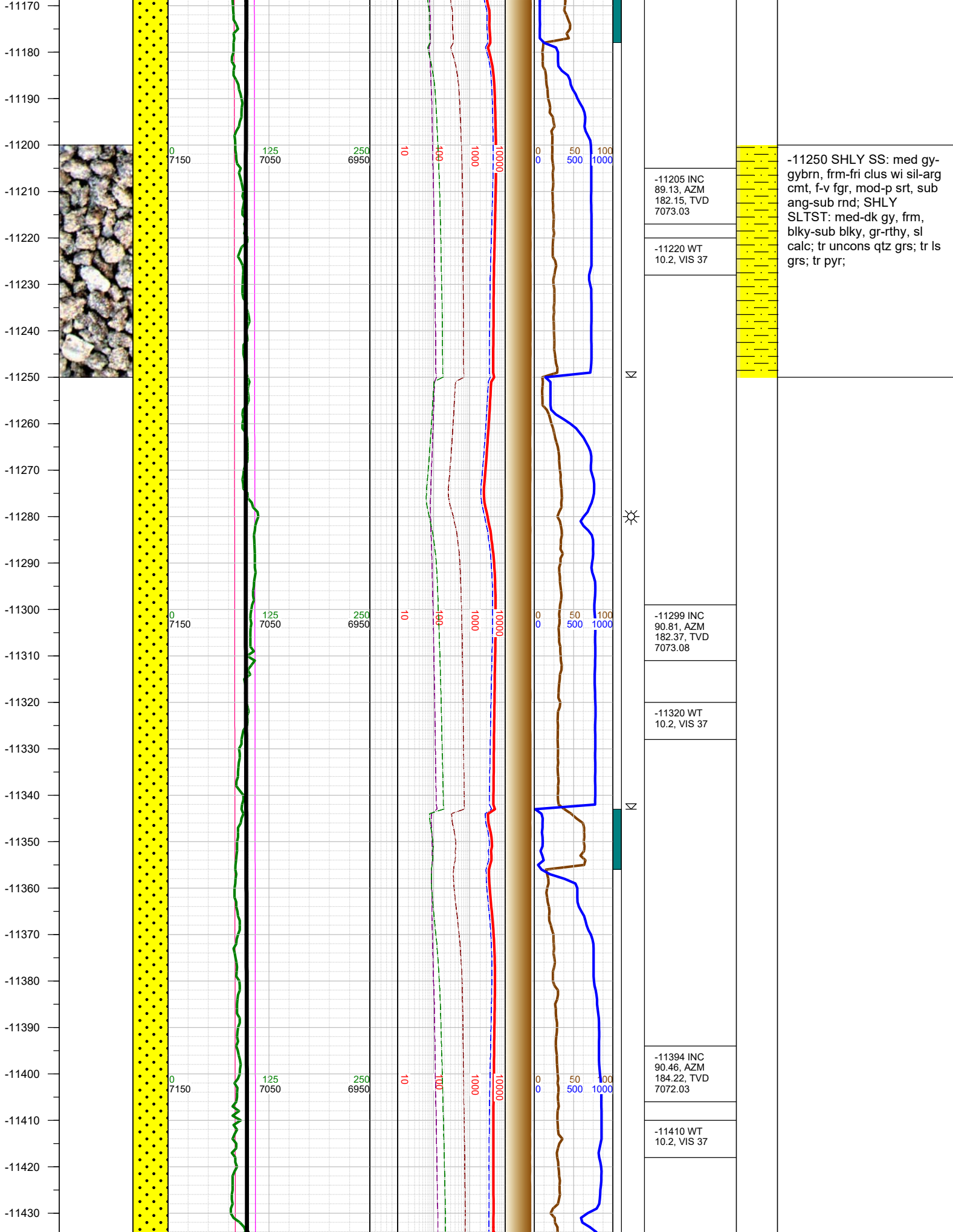




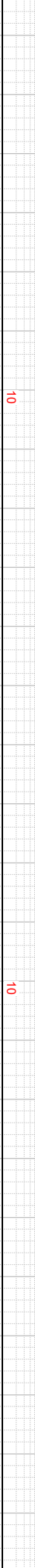
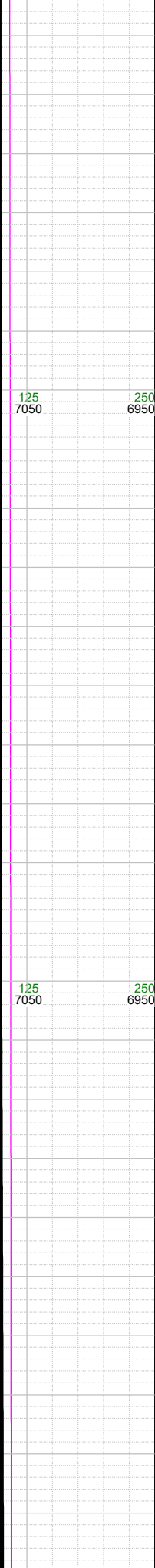
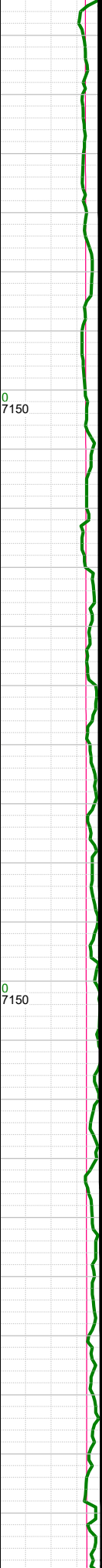
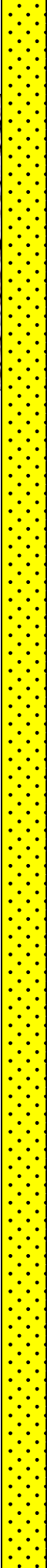
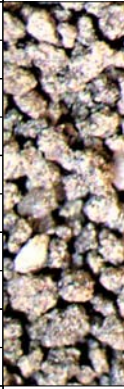








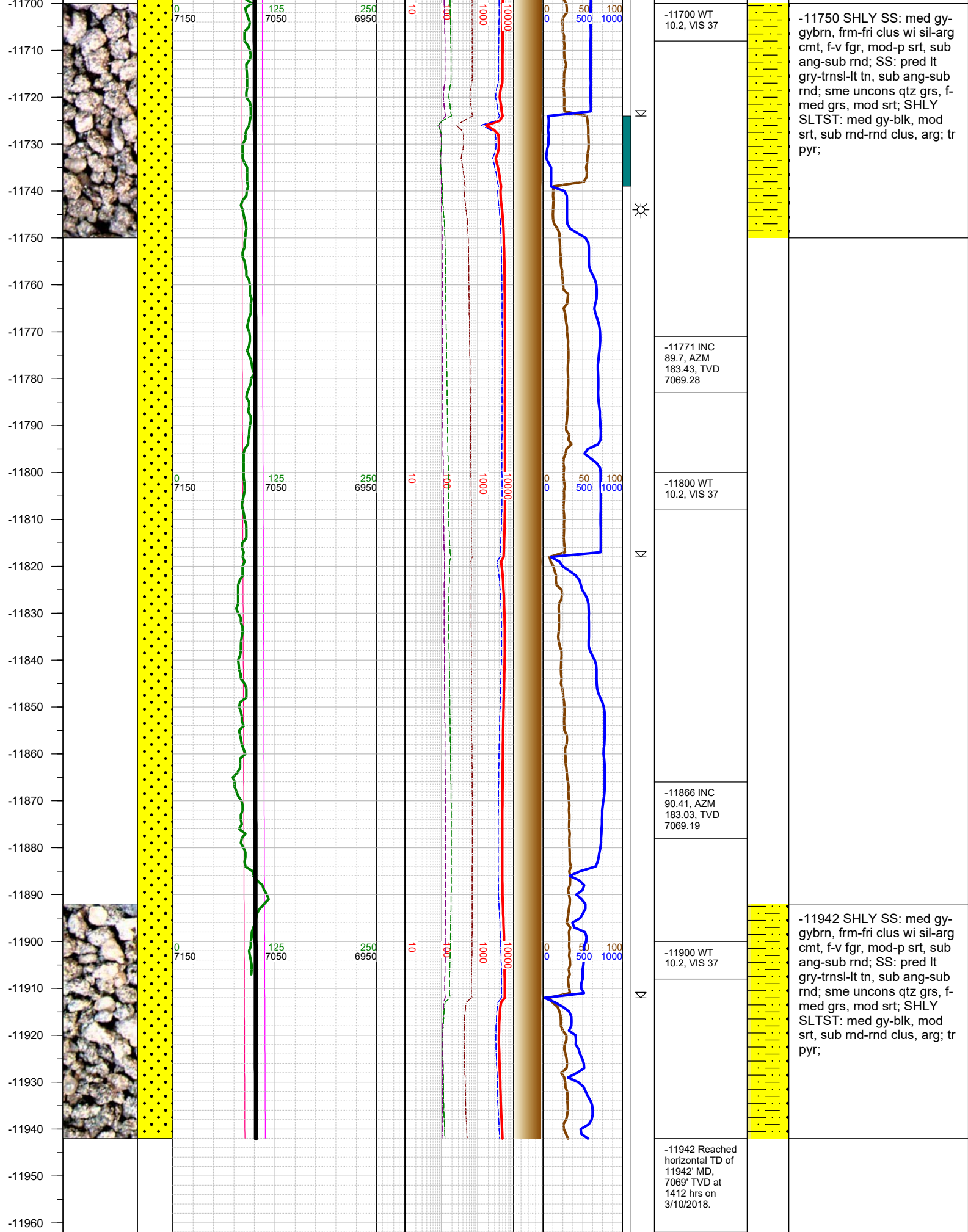
-11440  
-11450  
-11460  
-11470  
-11480  
-11490  
-11500  
-11510  
-11520  
-11530  
-11540  
-11550  
-11560  
-11570  
-11580  
-11590  
-11600  
-11610  
-11620  
-11630  
-11640  
-11650  
-11660  
-11670  
-11680  
-11690



-11488 INC 89.84, AZM 184.14, TVD 7071.78	
-11500 WT 10.2, VIS 37	
-11583 INC 90.32, AZM 183.34, TVD 7071.65	
-11600 WT 10.2, VIS 37	
-11677 INC 91.43, AZM 182.9, TVD 7070.21	



-11500 SHLY SS: med gy-  
gybrn, frm-fri clus wi sil-arg  
cmt, f-v fgr, mod-p srt, sub  
ang-sub rnd; SS: pred lt  
gry-trns-lt tn, sub ang-sub  
rnd; sme uncons qtz grs, f-  
med grs, mod srt; SHLY  
SLTST: med gy-blk, mod  
srt, sub rnd-rnd clus, arg; tr  
ls grs; tr pyr;





-11970

TOTAL DEPTH = 11942'

Thank you for using Earth Science Agency