



April 30, 2018

Ms. Julie Murphy, Director
Colorado Oil & Gas Conservation Commission
1120 Lincoln Street, Ste. 801
Denver, Colorado 80203

RE: Rule 318.A.e.
Raindance 29E-20-4C Well
SE/4 SE/4, Section 30, Township 6N, Range 67W, Weld County, CO

Dear Ms. Murphy,

Extraction Oil and Gas, Inc. (Extraction) is planning to drill the captioned horizontal wells in accordance with the provision of COGCC Rule 318A.e.

The spacing unit will consist of the 640-acres comprised of Section 32: N/2; Section 33: N/2, Township 6 North, Range 67 West, 6th P.M. and target the Codell formation. The well spacing unit is depicted on the enclosed spacing unit exhibit.

Extraction hereby certifies to the Director that all Owners within the proposed spacing unit above were notified and 30 days have passed without objection.

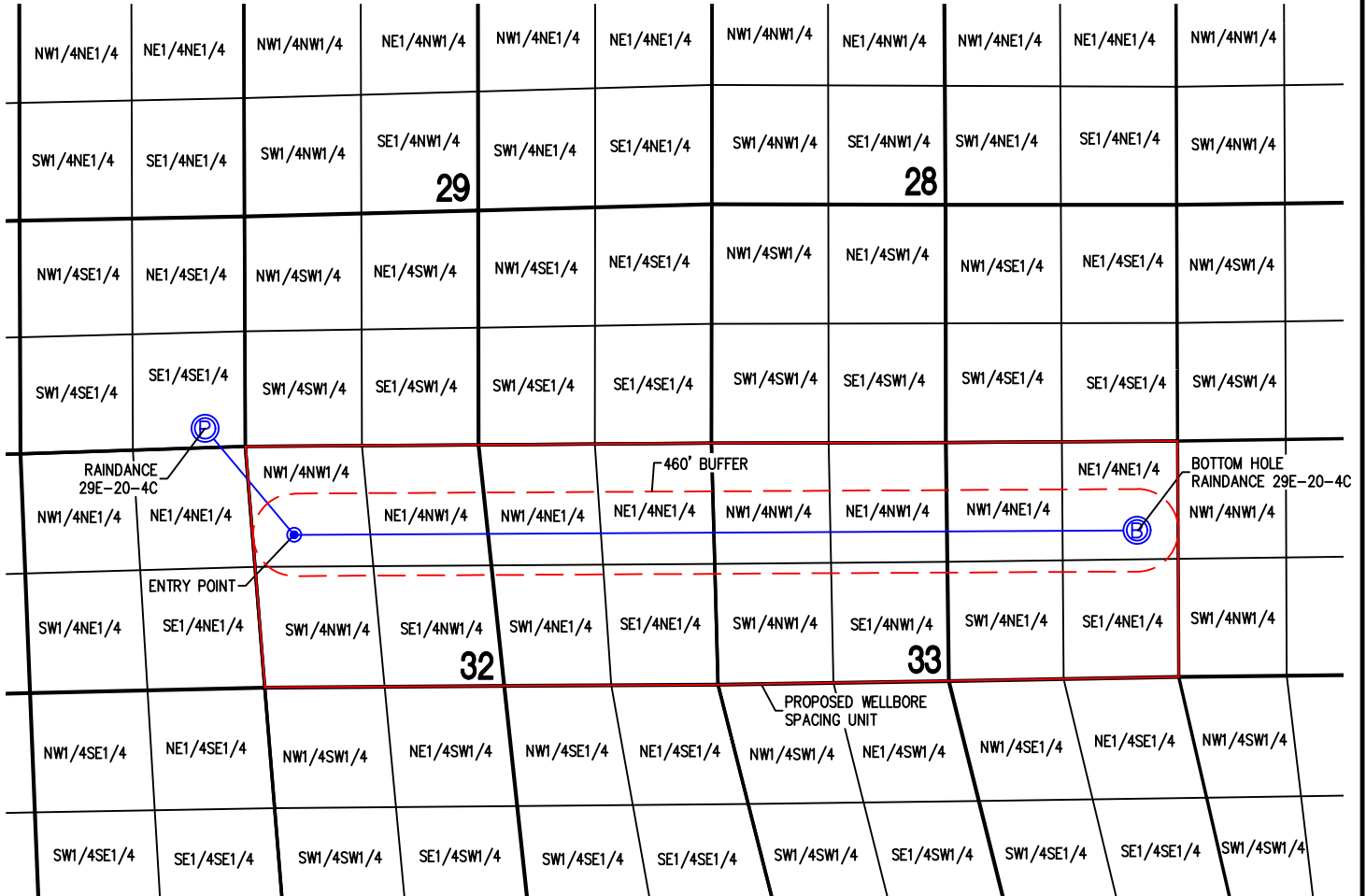
Sincerely,

Bonnie Lamond
Regulatory Analyst
Extraction Oil & Gas, Inc.

WELL □ORE SPACIN□ UNIT

RAINDANCE PAD

RAINDANCE 29E-20-4C



SURFACE LOCATION

SEC. 30, T6N, R67W
 LATITUDE = 40.451285°
 LONGITUDE = -104.928123°
 214' FSL, 451' FEL

BOTTOM HOLE LOCATION

SEC. 33, T6N, R67W
 LATITUDE = 40.447979°
 LONGITUDE = -104.890831°
 994' FNL, 460' FEL

ENTRY POINT LOCATION

SEC. 32, T6N, R67W
 LATITUDE = 40.448014°
 LONGITUDE = -104.924583°
 990' FNL, 460' FWL

NOTES:

- THIS SKETCH DOES NOT REPRESENT A BOUNDARY SURVEY.
- THE DATUM FOR THE LATITUDES AND LONGITUDES ON THIS SKETCH IS NAD83.

NOTES:

- Ⓟ - PROPOSED WELL HEAD
- Ⓡ - PROPOSED BOTTOM HOLE
- - ENTRY POINT

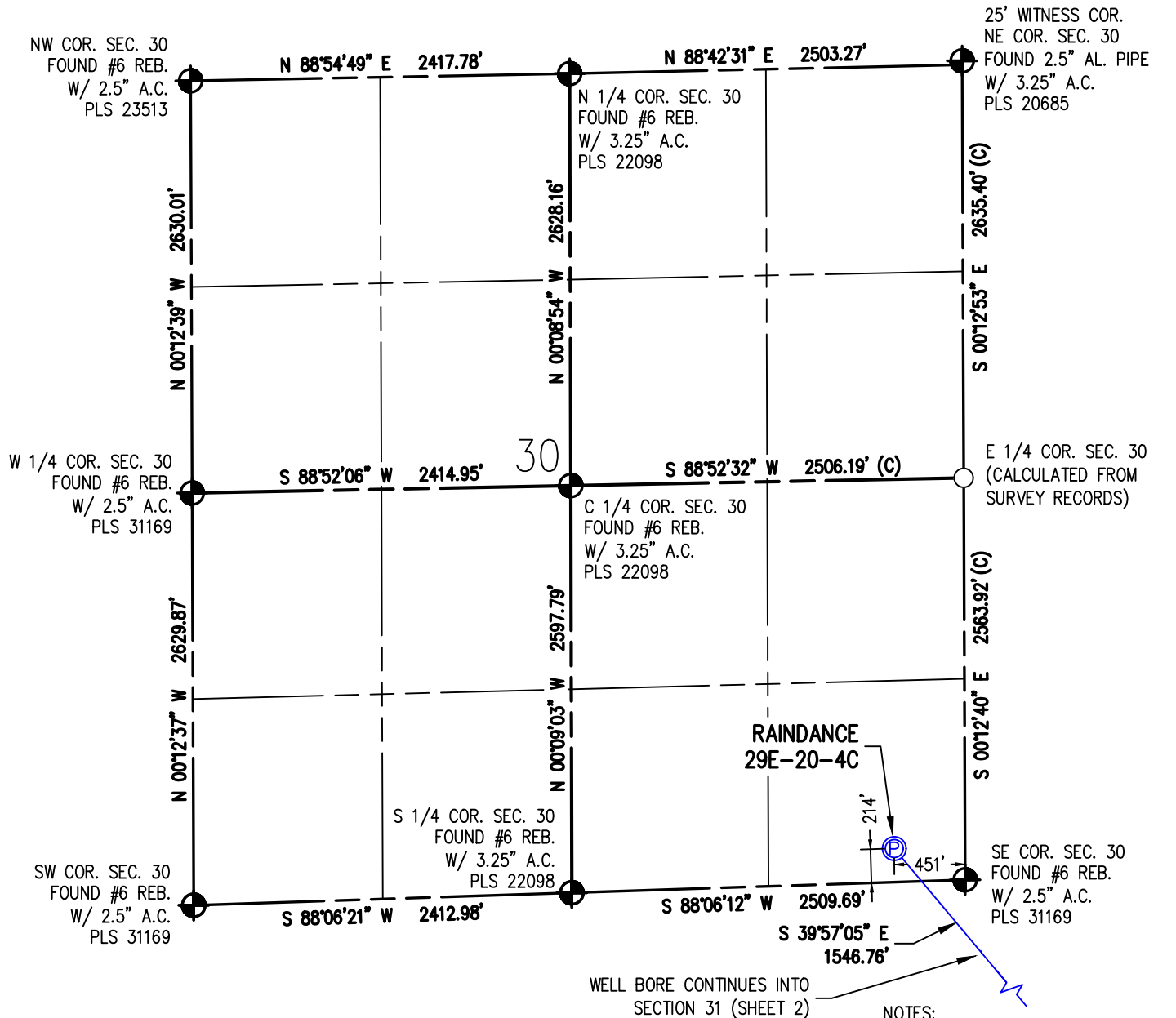


DRAWN BY	RPM	CHECKED BY	AAD
INITIAL SUBMITTAL	2/14/2018		
REVISED	2/21/2018		
DRAWING SIZE	8.5" X 11"		
JOB NO.	EXT06N67W30-01		
SHEET	1	OF	1



WELL LOCATION PLAT RAINDANCE 29E-20-4C

SE 1/4 SE 1/4 SEC. 30, T6N, R67W, 6TH P.M.



I HEREBY CERTIFY THAT THIS WELL LOCATION CERTIFICATE WAS PREPARED BY ME, OR UNDER MY DIRECT SUPERVISION, THAT THE FIELD WORK WAS COMPLETED ON 3/2/2017, THAT IT IS NOT A LAND SURVEY PLAT OR AN IMPROVEMENT SURVEY PLAT, AND THAT IT IS NOT TO BE RELED UPON FOR ESTABLISHMENT OF FENCE, BUILDING OR OTHER FUTURE IMPROVEMENT LINES.

AARON A. DEMO
Professional Land Surveyor Registration No. 38285
State of Colorado
FOR AND ON BEHALF OF BASELINE ENGINEERING CORP.

N

Scale 1" = 1000' ft

SURFACE LOCATION
SEC. 30, T6N, R67W
GROUND ELEVATION = 4977.7'
PDOP = 1.3
LATITUDE = 40.451285°
LONGITUDE = -104.928123°
214' FSL, 451' FEL
ENTRY POINT LOCATION
SEC. 32, T6N, R67W
LATITUDE = 40.448014°
LONGITUDE = -104.924583°
990' FNL, 460' FWL
BOTTOM HOLE LOCATION
SEC. 33, T6N, R67W
LATITUDE = 40.447979°
LONGITUDE = -104.890831°
994' FNL, 460' FEL

NOTES:

1. INDICATES SECTION CORNER
2. INDICATES CALCULATED CORNER
3. (C) INDICATES CALCULATED DIMENSION
4. ELEVATION BASED ON NAVD88 (GEOID12B)
5. BEARINGS DERIVED FROM COLORADO COORDINATE SYSTEM OF 1983 NORTH ZONE.
6. OPERATOR: JEFF VAN HORN
7. IMPROVEMENTS: SEE LOCATION DRAWING FOR ALL VISIBLE IMPROVEMENTS WITHIN 500' OF DISTURBED AREA.
8. WELL FOOTAGES ARE MEASURED AT RIGHT ANGLES TO THE SECTION LINES.

NEAREST CULTURAL ITEMS:

BUILDING: 696' NE
BUILDING UNIT: 814' SE
HIGH OCCUPANCY BUILDING UNIT: 5280'+
DESIGNATED OUTSIDE ACTIVITY AREA: 5280'+
PUBLIC ROAD: WELD COUNTY ROAD 64 222' S
ABOVE GROUND UTILITY: 5280'+
RAILROAD: 5280'+
PROPERTY LINE: 142' NE
SURFACE USE: GRASSLAND.
NEAREST EXISTING WELL: RAINDANCE 8 15' E

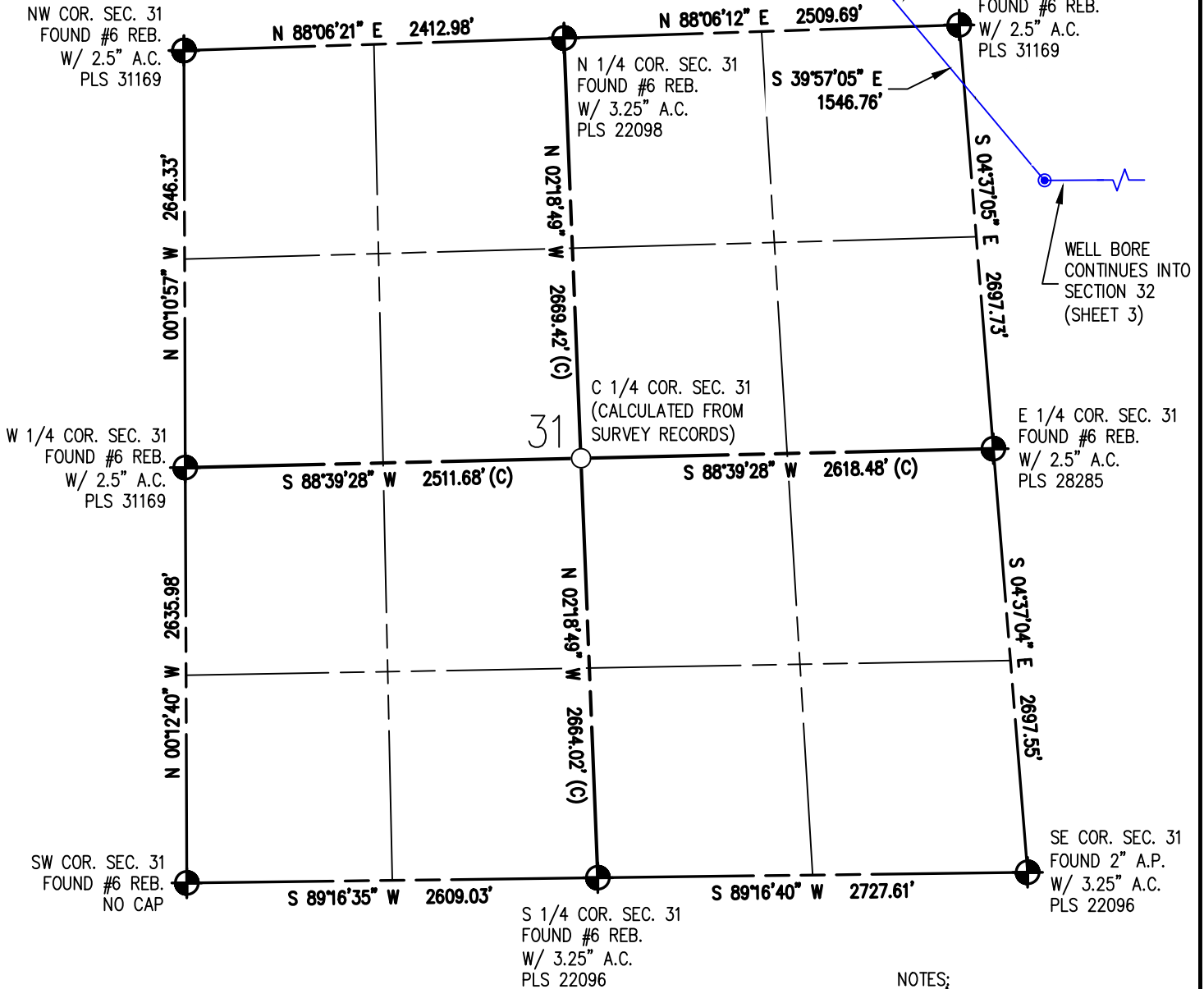


DRAWN BY	RPM	CHECKED BY	AAD
INITIAL SUBMITTAL	2/14/2018		
REVISED	2/21/2018		
DRAWING SIZE	8.5" X 11"		
JOB NO.	EXT06N67W30-01		
SHEET	1 OF 4		



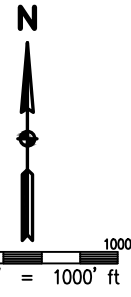
WELL LOCATION PLAT RAINANCE 29E-20-4C

SE 1/4 SE 1/4 SEC. 30, T6N, R67W, 6TH P.M.



I HEREBY CERTIFY THAT THIS WELL LOCATION CERTIFICATE WAS PREPARED BY ME, OR UNDER MY DIRECT SUPERVISION, THAT THE FIELD WORK WAS COMPLETED ON 3/2/2017, THAT IT IS NOT A LAND SURVEY PLAT OR AN IMPROVEMENT SURVEY PLAT, AND THAT IT IS NOT TO BE RELED UPON FOR ESTABLISHMENT OF FENCE, BUILDING, OR OTHER FUTURE IMPROVEMENT LINES.

AARON A. DEMO
Professional Land Surveyor Registration No. 38285
State of Colorado
FOR AND ON BEHALF OF BASELINE ENGINEERING CORP.



SURFACE LOCATION
SEC. 30, T6N, R67W
GROUND ELEVATION = 4977.7'
PDOP = 1.3
LATITUDE = 40.451285°
LONGITUDE = -104.928123°
214' FSL, 451' FEL
ENTRY POINT LOCATION
SEC. 32, T6N, R67W
LATITUDE = 40.448014°
LONGITUDE = -104.924583°
990' FNL, 460' FWL
BOTTOM HOLE LOCATION
SEC. 33, T6N, R67W
LATITUDE = 40.447979°
LONGITUDE = -104.890831°
994' FNL, 460' FEL

- NOTES:
1. INDICATES SECTION CORNER
 2. INDICATES CALCULATED CORNER
 3. (C) INDICATES CALCULATED DIMENSION
 4. ELEVATION BASED ON NAVD88 (GEOID12B)
 5. BEARINGS DERIVED FROM COLORADO COORDINATE SYSTEM OF 1983 NORTH ZONE.
 6. OPERATOR: JEFF VAN HORN
 7. IMPROVEMENTS: SEE LOCATION DRAWING FOR ALL VISIBLE IMPROVEMENTS WITHIN 500' OF DISTURBED AREA.
 8. WELL FOOTAGES ARE MEASURED AT RIGHT ANGLES TO THE SECTION LINES.

NEAREST CULTURAL ITEMS:

BUILDING: 696' NE
BUILDING UNIT: 814' SE
HIGH OCCUPANCY BUILDING UNIT: 5280'+
DESIGNATED OUTSIDE ACTIVITY AREA: 5280'+
PUBLIC ROAD: WELD COUNTY ROAD 64 222' S
ABOVE GROUND UTILITY: 5280'+
RAILROAD: 5280'+
PROPERTY LINE: 142' NE
SURFACE USE: GRASSLAND
NEAREST EXISTING WELL: RAINANCE 8 15' E



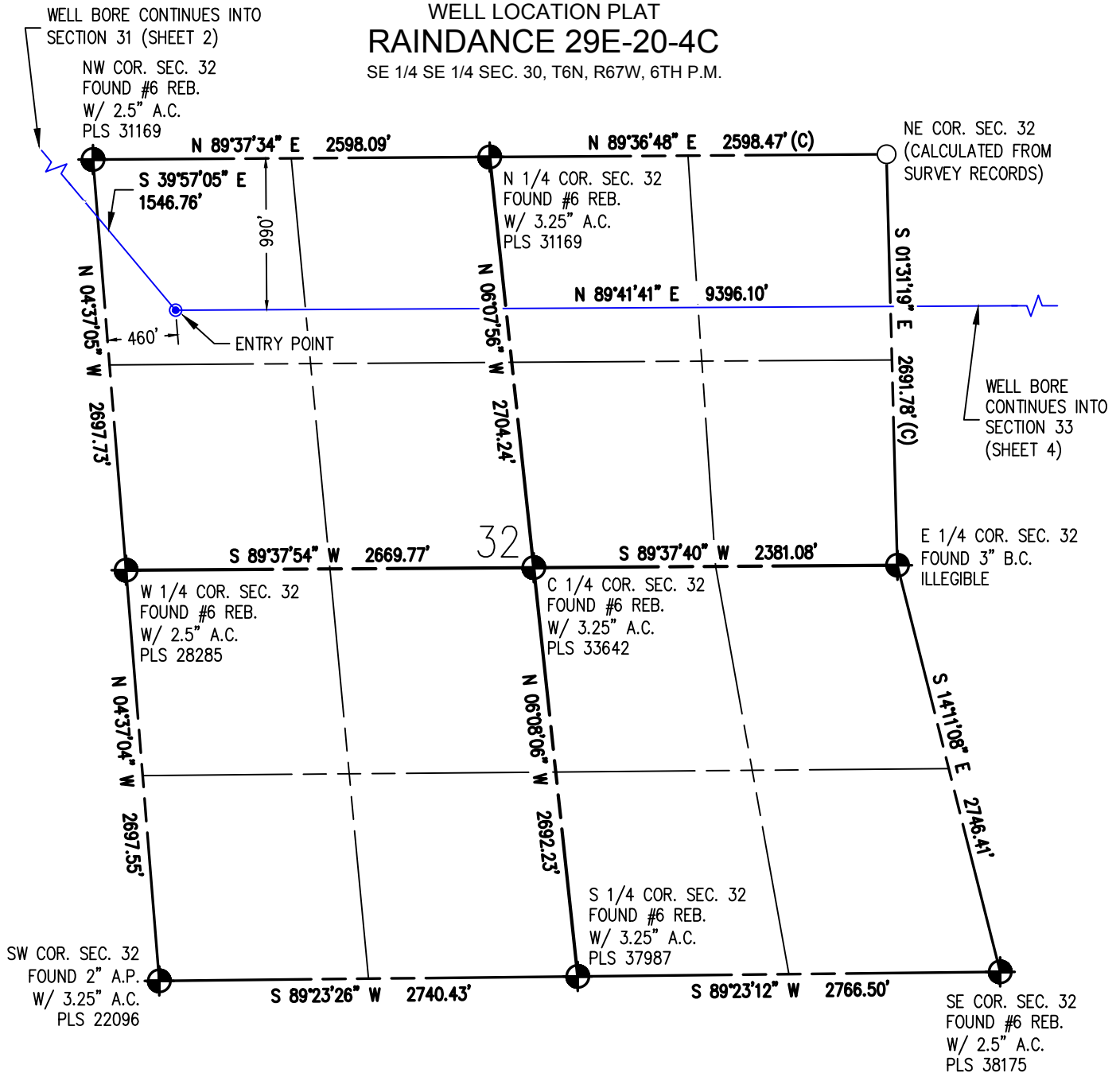
DRAWN BY	RPM	CHECKED BY	AAD
INITIAL SUBMITTAL	2/14/2018		
REVISED	2/21/2018		
DRAWING SIZE	8.5" X 11"		
JOB NO.	EXT06N67W30-01		
SHEET	2 OF 4		

BASELINE
Engineering - Planning - Surveying

4007 S. LINCOLN AVENUE, SUITE 405 • LOVELAND, COLORADO 80537
P: 970.353.7600 • F: 970.353.7601 • www.baselinecorp.com

WELL LOCATION PLAT RAINANCE 29E-20-4C

SE 1/4 SE 1/4 SEC. 30, T6N, R67W, 6TH P.M.



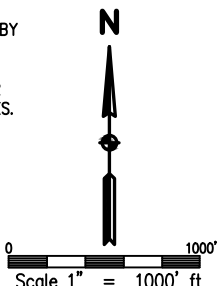
NOTES:

1. INDICATES SECTION CORNER
2. INDICATES CALCULATED CORNER
3. (C) INDICATES CALCULATED DIMENSION
4. ELEVATION BASED ON NAVD88 (GEOID12B)
5. BEARINGS DERIVED FROM COLORADO COORDINATE SYSTEM OF 1983 NORTH ZONE.
6. OPERATOR: JEFF VAN HORN
7. IMPROVEMENTS: SEE LOCATION DRAWING FOR ALL VISIBLE IMPROVEMENTS WITHIN 500' OF DISTURBED AREA.
8. WELL FOOTAGES ARE MEASURED AT RIGHT ANGLES TO THE SECTION LINES.

SURFACE LOCATION
SEC. 30, T6N, R67W
GROUND ELEVATION = 4977.7'
PDOP = 1.3
LATITUDE = 40.451285°
LONGITUDE = -104.928123°
214' FSL, 451' FEL
ENTRY POINT LOCATION
SEC. 32, T6N, R67W
LATITUDE = 40.448014°
LONGITUDE = -104.924583°
990' FNL, 460' FWL
BOTTOM HOLE LOCATION
SEC. 33, T6N, R67W
LATITUDE = 40.447979°
LONGITUDE = -104.890831°
994' FNL, 460' FEL

I HEREBY CERTIFY THAT THIS WELL LOCATION CERTIFICATE WAS PREPARED BY ME, OR UNDER MY DIRECT SUPERVISION, THAT THE FIELD WORK WAS COMPLETED ON 3/2/2017, THAT IT IS NOT A LAND SURVEY PLAT OR AN IMPROVEMENT SURVEY PLAT, AND THAT IT IS NOT TO BE RELED UPON FOR ESTABLISHMENT OF FENCE, BUILDING, OR OTHER FUTURE IMPROVEMENT LINES.

AARON A. DEMO
Professional Land Surveyor Registration No. 38285
State of Colorado
FOR AND ON BEHALF OF BASELINE ENGINEERING CORP.



NEAREST CULTURAL ITEMS:

BUILDING: 696' NE
BUILDING UNIT: 814' SE
HIGH OCCUPANCY BUILDING UNIT: 5280'+
DESIGNATED OUTSIDE ACTIVITY AREA: 5280'+
PUBLIC ROAD: WELD COUNTY ROAD 64 222' S
ABOVE GROUND UTILITY: 5280'+
RAILROAD: 5280'+
PROPERTY LINE: 142' NE
SURFACE USE: GRASSLAND,
NEAREST EXISTING WELL: RAINANCE 8 15' E

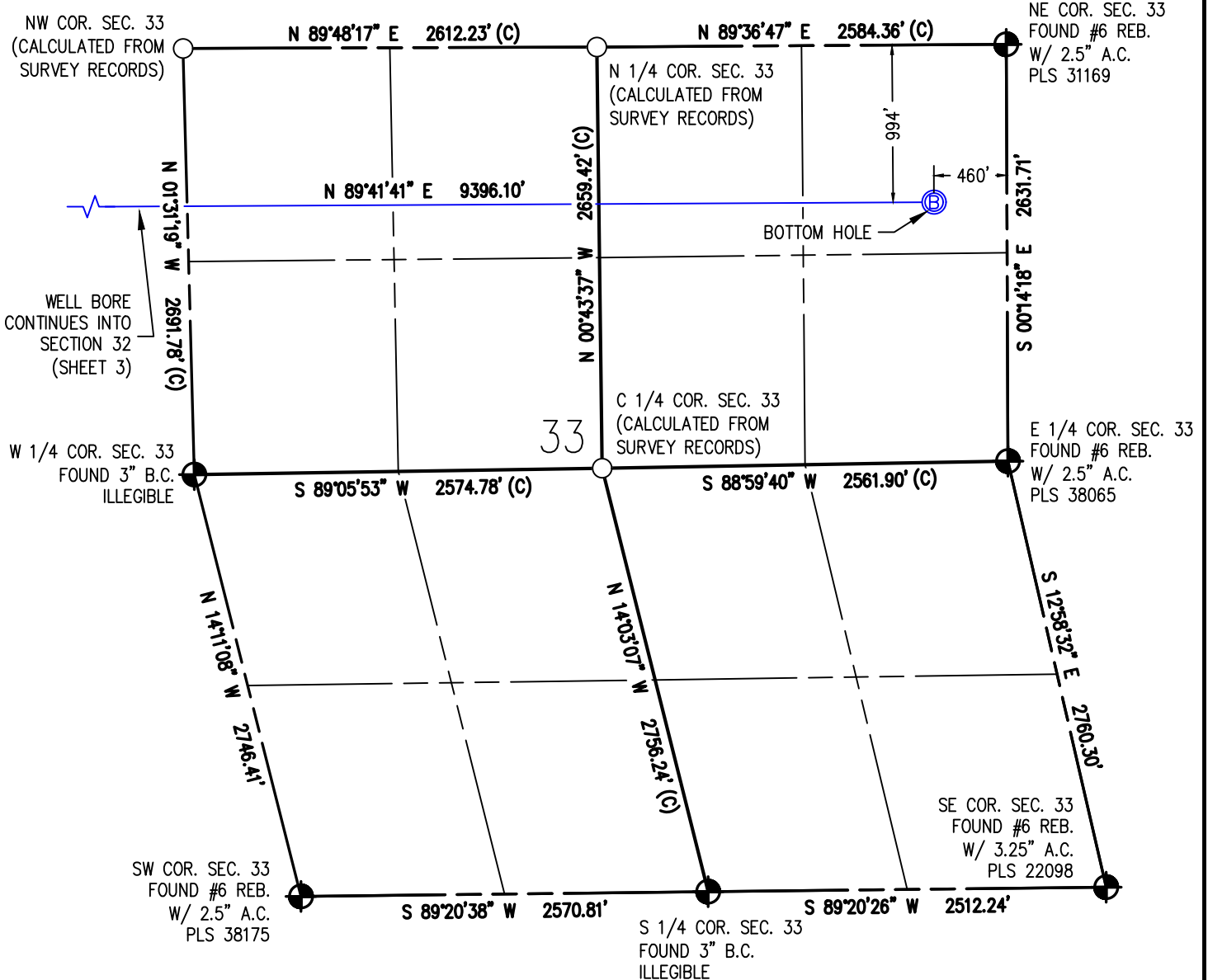


DRAWN BY	RPM	CHECKED BY	AAD
INITIAL SUBMITTAL	2/14/2018		
REVISED	2/21/2018		
DRAWING SIZE	8.5" X 11"		
JOB NO.	EXT06N67W30-01		
SHEET	3 OF 4		

BASELINE
Engineering - Planning - Surveying
4007 S. LINCOLN AVENUE, SUITE 405 - LOVELAND, COLORADO 80537
P: 970.353.7600 • F: 970.353.7601 • www.baselinecorp.com

WELL LOCATION PLAT RAINANCE 29E-20-4C

SE 1/4 SE 1/4 SEC. 30, T6N, R67W, 6TH P.M.



I HEREBY CERTIFY THAT THIS WELL LOCATION CERTIFICATE WAS PREPARED BY ME, OR UNDER MY DIRECT SUPERVISION, THAT THE FIELD WORK WAS COMPLETED ON 3/2/2017, THAT IT IS NOT A LAND SURVEY PLAT OR AN IMPROVEMENT SURVEY PLAT, AND THAT IT IS NOT TO BE RELIED UPON FOR ESTABLISHMENT OF FENCE, BUILDING OR OTHER FUTURE IMPROVEMENT LINES.

AARON A. DEMO
Professional Land Surveyor Registration No. 38285
State of Colorado
FOR AND ON BEHALF OF BASELINE ENGINEERING CORP.

N

0 1000'
Scale 1" = 1000' ft

SURFACE LOCATION
SEC. 30, T6N, R67W
GROUND ELEVATION = 4977.7'
PDOP = 1.3
LATITUDE = 40.451285°
LONGITUDE = -104.928123°
214' FSL, 451' FEL
ENTRY POINT LOCATION
SEC. 32, T6N, R67W
LATITUDE = 40.448014°
LONGITUDE = -104.924583°
990' FNL, 460' FWL
BOTTOM HOLE LOCATION
SEC. 33, T6N, R67W
LATITUDE = 40.447979°
LONGITUDE = -104.890831°
994' FNL, 460' FEL

NOTES:

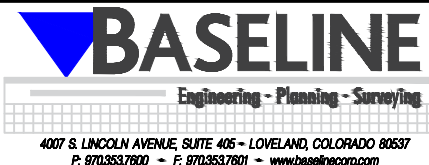
1. INDICATES SECTION CORNER
2. INDICATES CALCULATED CORNER
3. (C) INDICATES CALCULATED DIMENSION
4. ELEVATION BASED ON NAVD88 (GEOID12B)
5. BEARINGS DERIVED FROM COLORADO COORDINATE SYSTEM OF 1983 NORTH ZONE.
6. OPERATOR: JEFF VAN HORN
7. IMPROVEMENTS: SEE LOCATION DRAWING FOR ALL VISIBLE IMPROVEMENTS WITHIN 500' OF DISTURBED AREA.
8. WELL FOOTAGES ARE MEASURED AT RIGHT ANGLES TO THE SECTION LINES.

NEAREST CULTURAL ITEMS:

BUILDING: 696' NE
BUILDING UNIT: 814' SE
HIGH OCCUPANCY BUILDING UNIT: 5280'+
DESIGNATED OUTSIDE ACTIVITY AREA: 5280'+
PUBLIC ROAD: WELD COUNTY ROAD 64 222' S
ABOVE GROUND UTILITY: 5280'+
RAILROAD: 5280'+
PROPERTY LINE: 142' NE
SURFACE USE: GRASSLAND.
NEAREST EXISTING WELL: RAINANCE 8 15' E



DRAWN BY	CHECKED BY
RPM	AAD
INITIAL SUBMITTAL	2/14/2018
REVISED	2/21/2018
DRAWING SIZE	8.5" X 11"
JOB NO.	EXT06N67W30-01
SHEET	4 OF 4



4007 S. LINCOLN AVENUE, SUITE 405 - LOVELAND, COLORADO 80537
P: 970.353.7600 - F: 970.353.7601 - www.baselinecorp.com