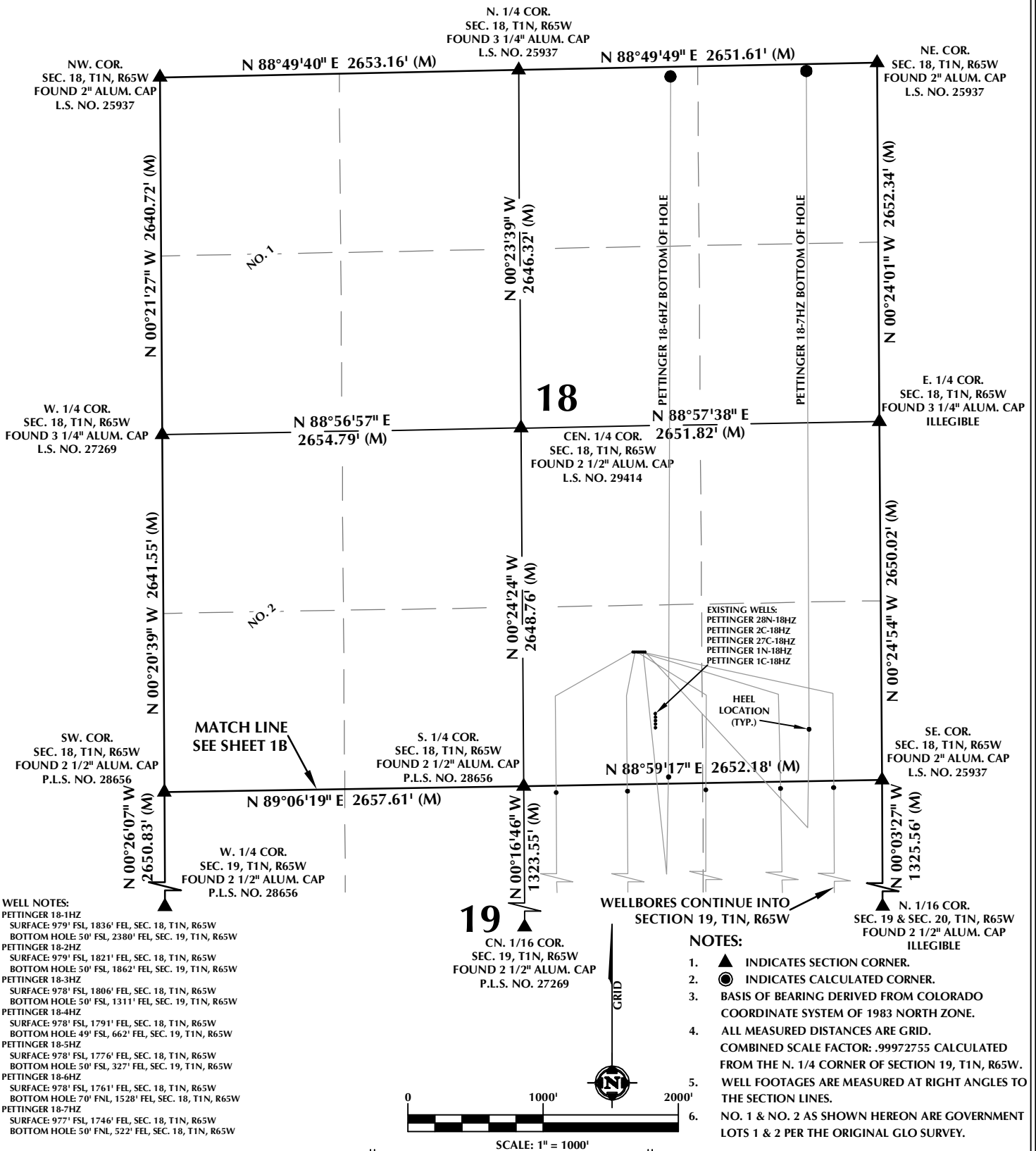


# MULTI-WELL PLAN SECTIONS 18 & 19, T1N, R65W



## WELL PAD - PETTINGER 20-18HZ

MULTI-WELL PLAN  
PETTINGER 18-1HZ,  
PETTINGER 18-2HZ, PETTINGER 18-3HZ,  
PETTINGER 18-4HZ, PETTINGER 18-5HZ,  
PETTINGER 18-6HZ & PETTINGER 18-7HZ  
LOCATED IN SECTIONS 18 & 19,  
T1N, R65W, 6TH P.M.  
WELD COUNTY, COLORADO

**Kerr-McGee Oil &  
Gas Onshore L.P.**  
1099 18th Street  
Denver, Colorado 80202



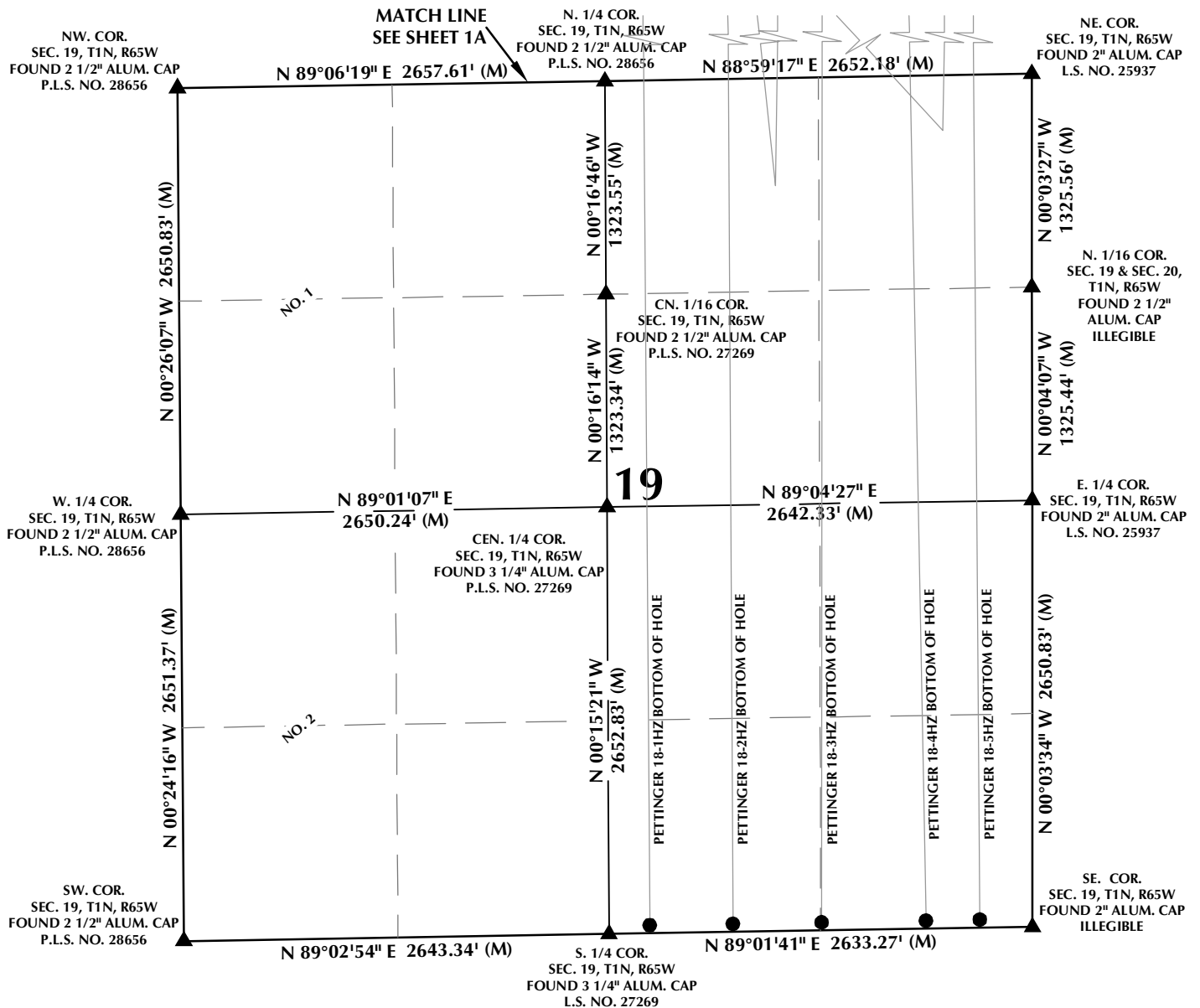
## CONSULTING, LLC

**SHERIDAN OFFICE**  
1095 Saberton Avenue  
Sheridan, Wyoming 82801  
Phone 307-674-0609

**LOVELAND OFFICE**  
1635 Foxtrail Drive, Suite 204  
Loveland, Colorado 80538  
Phone 970-776-4331

DRAFTED BY:	GLK	CHECKED BY:	RKF	SHEET NO:
DATE DRAFTED:	2/27/18	DATE SURVEYED:	1/30/18	<b>1A</b>
REVISED:		FILE NAME:	17-03	1A OF 1

# MULTI-WELL PLAN SECTION 19, T1N, R65W

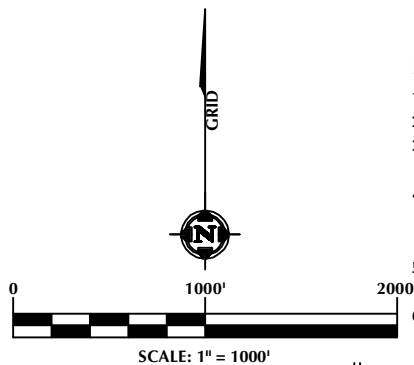


## WELL NOTES:

PETTINGER 18-1HZ  
SURFACE: 979' FSL, 1836' FEL, SEC. 18, T1N, R65W  
BOTTOM HOLE: 50' FSL, 2380' FEL, SEC. 19, T1N, R65W  
PETTINGER 18-2HZ  
SURFACE: 979' FSL, 1821' FEL, SEC. 18, T1N, R65W  
BOTTOM HOLE: 50' FSL, 1862' FEL, SEC. 19, T1N, R65W  
PETTINGER 18-3HZ  
SURFACE: 978' FSL, 1806' FEL, SEC. 18, T1N, R65W  
BOTTOM HOLE: 50' FSL, 1311' FEL, SEC. 19, T1N, R65W  
PETTINGER 18-4HZ  
SURFACE: 978' FSL, 1791' FEL, SEC. 18, T1N, R65W  
BOTTOM HOLE: 49' FSL, 662' FEL, SEC. 19, T1N, R65W  
PETTINGER 18-5HZ  
SURFACE: 978' FSL, 1776' FEL, SEC. 18, T1N, R65W  
BOTTOM HOLE: 50' FSL, 327' FEL, SEC. 19, T1N, R65W  
PETTINGER 18-6HZ  
SURFACE: 978' FSL, 1761' FEL, SEC. 18, T1N, R65W  
BOTTOM HOLE: 70' FSL, 1528' FEL, SEC. 18, T1N, R65W  
PETTINGER 18-7HZ  
SURFACE: 977' FSL, 1746' FEL, SEC. 18, T1N, R65W  
BOTTOM HOLE: 50' FSL, 522' FEL, SEC. 18, T1N, R65W

## NOTES:

- ▲ INDICATES SECTION CORNER.
- INDICATES CALCULATED CORNER.
- BASIS OF BEARING DERIVED FROM COLORADO COORDINATE SYSTEM OF 1983 NORTH ZONE.
- ALL MEASURED DISTANCES ARE GRID.
- COMBINED SCALE FACTOR: .99972755 CALCULATED FROM THE N. 1/4 CORNER OF SECTION 19, T1N, R65W.
- WELL FOOTAGES ARE MEASURED AT RIGHT ANGLES TO THE SECTION LINES.
- NO. 1 & NO. 2 AS SHOWN HEREON ARE GOVERNMENT LOTS 1 & 2 PER THE ORIGINAL GLO SURVEY.



## WELL PAD - PETTINGER 20-18HZ

MULTI-WELL PLAN  
PETTINGER 18-1HZ,  
PETTINGER 18-2HZ, PETTINGER 18-3HZ,  
PETTINGER 18-4HZ, PETTINGER 18-5HZ,  
PETTINGER 18-6HZ & PETTINGER 18-7HZ  
LOCATED IN SECTIONS 18 & 19,  
T1N, R65W, 6TH P.M.  
WELD COUNTY, COLORADO

**Kerr-McGee Oil &  
Gas Onshore L.P.**  
1099 18th Street  
Denver, Colorado 80202



## CONSULTING, LLC

**SHERIDAN OFFICE** 1095 Saberton Avenue  
Sheridan, Wyoming 82801  
Phone 307-674-0609  
**LOVELAND OFFICE** 1635 Foxtrail Drive, Suite 204  
Loveland, Colorado 80538  
Phone 970-776-4331

DRAFTED BY:	GLK	CHECKED BY:	RKF	SHEET NO:
DATE DRAFTED:	2/27/18	DATE SURVEYED:	1/30/18	<b>1B</b>
REVISED:		FILE NAME:	17-03	1B OF 1