

T1N, R65W

N. 1/4 COR.
SEC. 18, T1N, R65W
FOUND 3 1/4" ALUM. CAP
L.S. NO. 25937

N 88°49'49" E 2651.61' (M)

NE. COR.
SEC. 18, T1N, R65W
FOUND 2" ALUM. CAP
L.S. NO. 25937

NW. COR.
SEC. 18, T1N, R65W
FOUND 2" ALUM. CAP
L.S. NO. 25937

N 88°49'40" E 2653.16' (M)

N 00°21'27" W 2640.72' (M)

SURFACE LOCATION: NAD 83
GROUND ELEVATION= 4998.6'
LATITUDE= 40.046850°
LONGITUDE= -104.703631°
LATITUDE= 40°02'48.662"
LONGITUDE= -104°42'13.071"
HEEL LOCATION: NAD 83
LATITUDE= 40.044012°
LONGITUDE= -104.705694°
LATITUDE= 40°02'38.444"
LONGITUDE= -104°42'20.497"
BOTTOM HOLE LOCATION: NAD 83
LATITUDE= 40.029737°
LONGITUDE= -104.705728°
LATITUDE= 40°01'47.053"
LONGITUDE= -104°42'20.621"

N 00°23'39" W
2646.32' (M)

N 00°24'01" W 2652.34' (M)

18

W. 1/4 COR.
SEC. 18, T1N, R65W
FOUND 3 1/4" ALUM. CAP
L.S. NO. 27269

N 88°56'57" E
2654.79' (M)

N 88°57'38" E
2651.82' (M)

E. 1/4 COR.
SEC. 18, T1N, R65W
FOUND 3 1/4" ALUM. CAP
ILLEGIBLE

CEN. 1/4 COR.
SEC. 18, T1N, R65W
FOUND 2 1/2" ALUM. CAP
L.S. NO. 29414

N 00°20'39" W 2641.55' (M)

NO. 2

N 00°24'24" W
2648.76' (M)

N 00°24'54" W 2650.02' (M)

PETTINGER 18-1HZ

SURFACE LOCATION

1836'

979'

SW. COR.
SEC. 18, T1N, R65W
FOUND 2 1/2" ALUM. CAP
P.L.S. NO. 28656

MATCH LINE
SEE SHEET 2

N 89°06'19" E 2657.61' (M)

S. 1/4 COR.
SEC. 18, T1N, R65W
FOUND 2 1/2" ALUM. CAP
P.L.S. NO. 28656

N 88°59'17" E 2652.18' (M)
WELLBORE CONTINUES INTO
SECTION 19, T1N, R65W

SE. COR.
SEC. 18, T1N, R65W
FOUND 2" ALUM. CAP
L.S. NO. 25937

30°52" 7°34"



NOTE:
MAGNETIC NORTH IS CURRENT AS OF 1/30/2018.
MAGNETIC NORTH CHANGES WEST 0°06' PER YEAR.



SCALE: 1" = 1000'

NOTES:

- ▲ INDICATES SECTION CORNER.
- INDICATES CALCULATED CORNER.
- ELEVATION BASED ON NAVD88 (GEOID12B).
- BASIS OF BEARING DERIVED FROM COLORADO COORDINATE SYSTEM OF 1983 NORTH ZONE.
- ALL MEASURED DISTANCES ARE GRID.
COMBINED SCALE FACTOR: .99972755 CALCULATED FROM THE N. 1/4 CORNER OF SECTION 19, T1N, R65W.
- OPERATOR: ROB WILSON / PDOP = 1.5.
- SEE ADDENDUM TO WELL LOCATION CERTIFICATE FOR EXISTING IMPROVEMENTS WITHIN 500' OF THE WELL PAD.
- WELL FOOTAGES ARE MEASURED AT RIGHT ANGLES TO THE SECTION LINES.
- THE BOTTOM OF HOLE BEARS S00°24'25"E, 5200' FROM THE HEEL LOCATION.
- NO. 1 & NO. 2 AS SHOWN HEREON ARE GOVERNMENT LOTS 1 & 2 PER THE ORIGINAL GLO SURVEY.

CERTIFICATE OF SURVEYOR:

THIS IS TO CERTIFY THAT THE ABOVE PLAT WAS PREPARED FROM FIELD NOTES OF ACTUAL SURVEYS MADE BY ME OR UNDER MY SUPERVISION AND THAT THE SAME ARE TRUE AND CORRECT TO THE BEST OF MY KNOWLEDGE AND BELIEF. THIS CERTIFICATE DOES NOT REPRESENT A LAND SURVEY PLAT OR IMPROVEMENT SURVEY PLAT AS DEFINED BY C.R.S. § 8-31-102 AND CANNOT BE RELIED UPON TO DETERMINE OWNERSHIP.

Randall K. French
2/27/18
PROFESSIONAL LAND SURVEYOR
COLORADO REGISTRATION NUMBER 38512

RANDALL K. FRENCH
PROFESSIONAL LAND SURVEYOR
COLORADO REGISTRATION NUMBER 38512

NOTICE:
ACCORDING TO COLORADO STATE LAW YOU MUST COMMENCE LEGAL ACTION BASED UPON ANY DEFECT IN THIS SURVEY WITHIN THREE YEARS AFTER YOU FIRST DISCOVER SUCH DEFECT. IN NO EVENT MAY ANY ACTION BASED UPON ANY DEFECT IN THIS SURVEY BE COMMENCED MORE THAN TEN YEARS FROM THE DATE ON THE CERTIFICATION SHOWN HEREON.

WELL PAD - PETTINGER 20-18HZ

PETTINGER 18-1HZ
WELL LOCATION CERTIFICATE
979' FSL & 1836' FEL SWSE (SURFACE)
LOCATED IN SECTION 18
50' FNL & 2411' FEL NWNE (HEEL)
50' FSL & 2380' FEL SWSE (BOTTOM)
LOCATED IN SECTION 19
T1N, R65W, 6TH P.M.
WELD COUNTY, COLORADO

Kerr-McGee Oil &
Gas Onshore L.P.
1099 18th Street
Denver, Colorado 80202



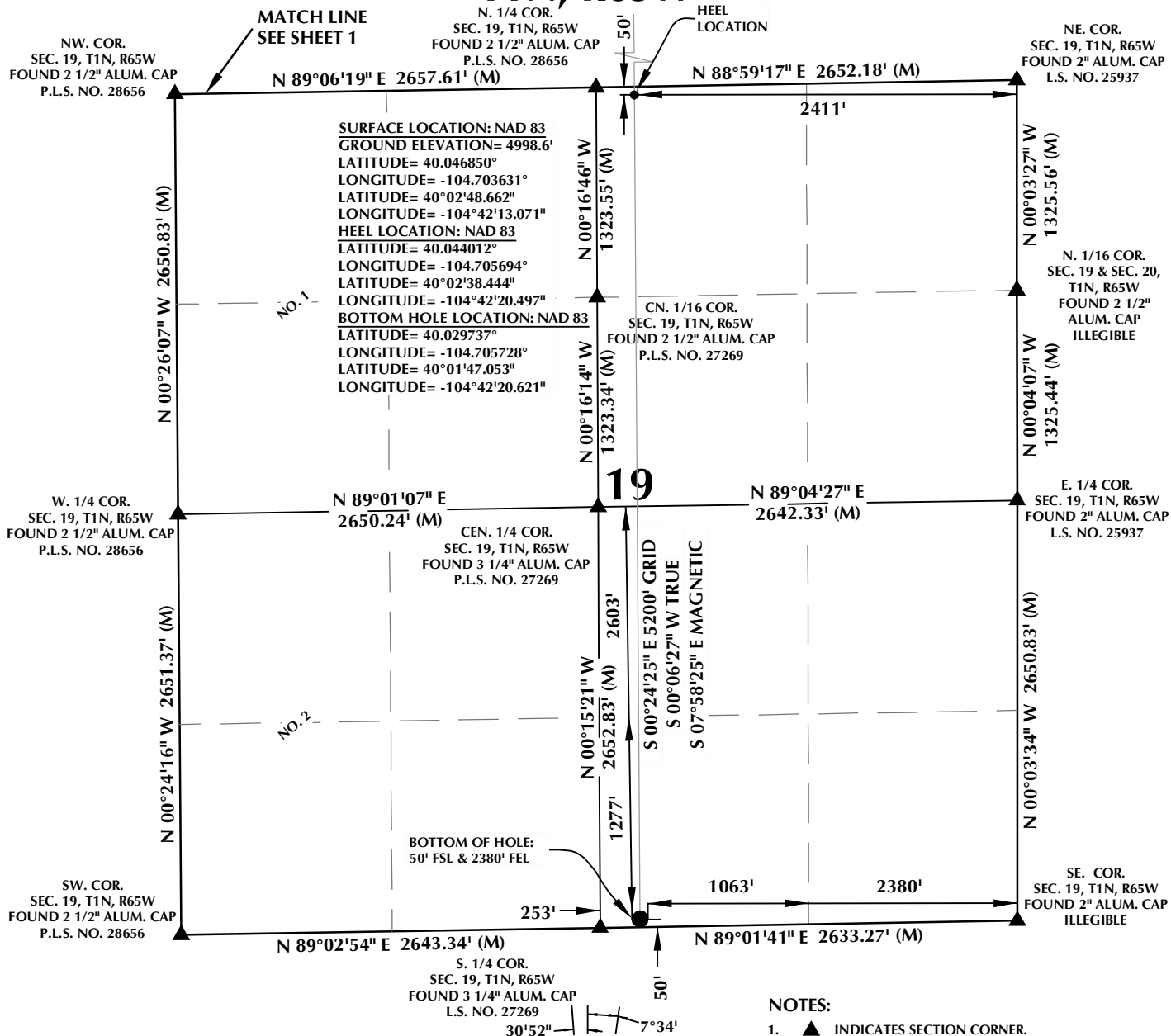
CONSULTING, LLC

SHERIDAN OFFICE
1095 Saberton Avenue
Sheridan, Wyoming 82801
Phone 307-674-0609

LOVELAND OFFICE
1635 Foxtrail Drive, Suite 204
Loveland, Colorado 80538
Phone 970-776-4331

DRAFTED BY:	GLK	CHECKED BY:	RKF	SHEET NO:
DATE DRAFTED:	2/27/18	DATE SURVEYED:	1/30/18	1
REVISED:		FILE NAME:	17-03	1 OF 2

T1N, R65W

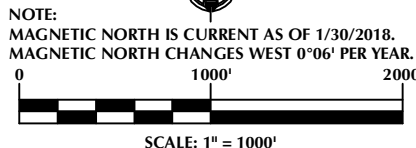


CERTIFICATE OF SURVEYOR:

THIS IS TO CERTIFY THAT THE ABOVE PLAT WAS PREPARED FROM FIELD NOTES OF ACTUAL SURVEYS MADE BY ME OR UNDER MY SUPERVISION AND THAT THE SAME ARE TRUE AND CORRECT TO THE BEST OF MY KNOWLEDGE AND BELIEF. THIS CERTIFICATE DOES NOT REPRESENT A LAND SURVEY PLAT OR IMPROVEMENT SURVEY PLAT AS DEFINED BY C.R.S. 38-31-102 AND CANNOT BE RELIED UPON TO DETERMINE OWNERSHIP.

Randall K. French
 38512
 2/27/18
 RANDALL K. FRENCH
 PROFESSIONAL LAND SURVEYOR
 COLORADO REGISTRATION NUMBER 38512

NOTICE:
 ACCORDING TO COLORADO STATE LAW YOU MUST SIGN OFF ON ANY LEGAL ACTION BASED UPON ANY DEFECT IN THIS SURVEY WITHIN THREE YEARS AFTER YOU FIRST DISCOVER SUCH DEFECT. IN NO EVENT MAY ANY ACTION BASED UPON ANY DEFECT IN THIS SURVEY BE COMMENCED MORE THAN TEN YEARS FROM THE DATE ON THE CERTIFICATION SHOWN HEREON.



NOTES:

- ▲ INDICATES SECTION CORNER.
- INDICATES CALCULATED CORNER.
- ELEVATION BASED ON NAVD88 (GEOID12B).
- BASIS OF BEARING DERIVED FROM COLORADO COORDINATE SYSTEM OF 1983 NORTH ZONE.
- ALL MEASURED DISTANCES ARE GRID.
COMBINED SCALE FACTOR: .99972755 CALCULATED FROM THE N. 1/4 CORNER OF SECTION 19, T1N, R65W.
- OPERATOR: ROB WILSON / PDOP = 1.5.
- SEE ADDENDUM TO WELL LOCATION CERTIFICATE FOR EXISTING IMPROVEMENTS WITHIN 500' OF THE WELL PAD.
- WELL FOOTAGES ARE MEASURED AT RIGHT ANGLES TO THE SECTION LINES.
- THE BOTTOM OF HOLE BEARS S00°24'25\"/>

WELL PAD - PETTINGER 20-18HZ

PETTINGER 18-1HZ
 WELL LOCATION CERTIFICATE
 979' FSL & 1836' FEL SWSE (SURFACE)
 LOCATED IN SECTION 18
 50' FNL & 2411' FEL NWNE (HEEL)
 50' FSL & 2380' FEL SWSE (BOTTOM)
 LOCATED IN SECTION 19
 T1N, R65W, 6TH P.M.
 WELD COUNTY, COLORADO

**Kerr-McGee Oil &
 Gas Onshore L.P.**
 1099 18th Street
 Denver, Colorado 80202



CONSULTING, LLC

SHERIDAN OFFICE
 1095 Saberton Avenue
 Sheridan, Wyoming 82801
 Phone 307-674-0609

LOVELAND OFFICE
 1635 Foxtrail Drive, Suite 204
 Loveland, Colorado 80538
 Phone 970-776-4331

DRAFTED BY:	GLK	CHECKED BY:	RKF	SHEET NO:
DATE DRAFTED:	2/27/18	DATE SURVEYED:	1/30/18	2
REVISED:		FILE NAME:	17-03	2 OF 2