

Ursa Operating Company LLC

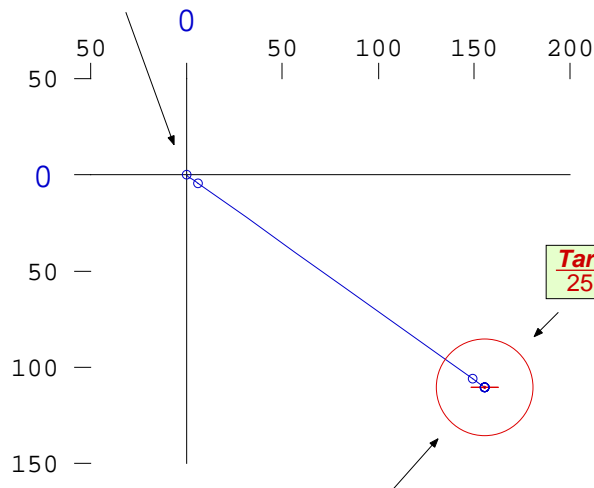
Norcross Well A-6
Garfield County, CO



Horizontal Plan
1" = 100'



Surface Location
Y=1623067.9'
X=2371368.61'
NAD 83

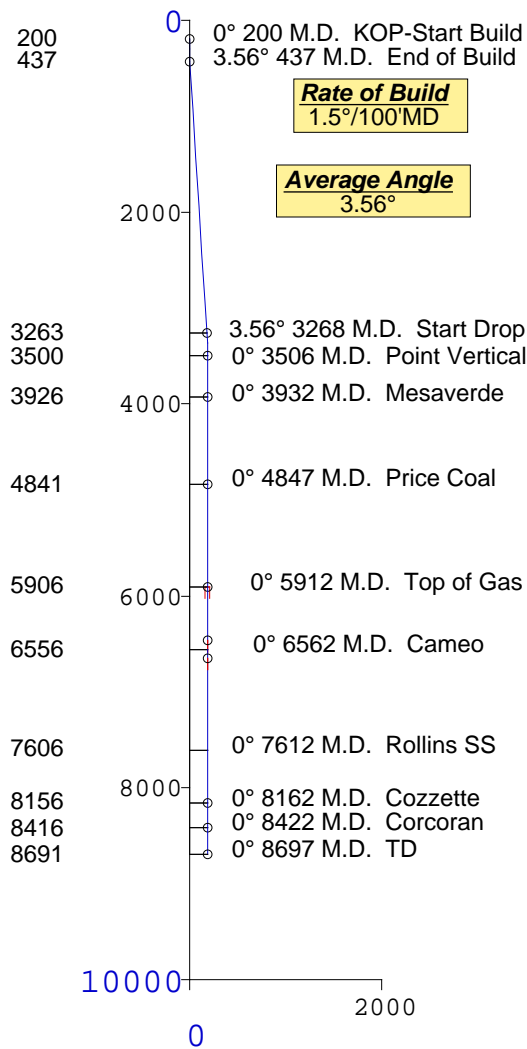


Target Area
25' Radius

Top of Gas
190.63' Displacement
@ 125.45° Azimuth
South-110.56' East-155.3'
TVD-5906' MD-5912'
Y=1622957.3', X=2371523.9'

Vertical Section
1" = 2000'

Plane of Proposal
125.45° Azimuth



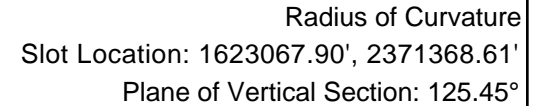
Rate of Build
1.5°/100'MD

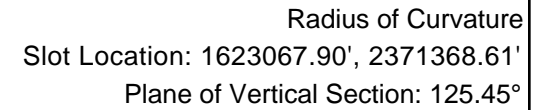
Average Angle
3.56°

Rate of Drop
1.5°/100'MD

Formation	TVD
Vertical	3500
Mesaverde	3926
Price Coal	4841
Top Gas	5906
Cameo	6556
Rollins SS	7606
Cozzette	8156
Corcoran	8416
TD	8691



[illegible]

TD