



# Bonanza Creek Energy

## Production Post Job Report

---

State Pronghorn V-29-30XRLNB

S:28 T:5N R:61W Weld CO

Quote #:

06724

Execution #:

04532

---



## Bonanza Creek Energy

Attention: Mr. Joel Dill | (720) 633-5871 | JDill@bonanzacrk.com

Bonanza Creek Energy | 410 17th St Suite 1400 | Denver, CO. 80202

---

Dear Mr. Joel Dill,

Thank you for the opportunity to provide cementing services on this well. BJ Services strives to achieve complete customer satisfaction. If you have any questions regarding the services or data provided, please contact BJ Services at any time.

Sincerely,  
Jacob Ojeda  
Field Engineer I | (763) 516-3012 | jacob.ojeda@bjservices.com

Field Office 1716 East Allison Rd., Cheyenne WY, 82007  
Phone: (307) 638-5585

Sales Office 999 18th St. Suite 1200 Denver, CO 80202  
Phone: (281) 408-2361

---

# Cementing Treatment



<b>Start Date</b>	<b>3-11-2018</b>	<b>Well</b>	State Pronghorn V-29-30XRLNB
<b>End Date</b>	<b>3-11-2018</b>	<b>County</b>	WELD
<b>Client</b>	BONANZA CREEK ENERGY	<b>State/Province</b>	CO
<b>Client Field Rep</b>	KENNY	<b>API</b>	05-123-44113
<b>Service Supervisor</b>	ALBERT SNYDER	<b>Formation</b>	
<b>Field Ticket No.</b>	3755	<b>Rig</b>	XTREME 19
<b>District</b>	CHEYENNE, WY	<b>Type of Job</b>	LONG STRING

## WELL GEOMETRY

Type	ID (in)	OD (in)	Wt. (lb/ft)	MD (ft)	TVD (ft)	Excess(%)
Previous Casing	8.92	9.63	36.00	1,600.00	1,600.00	
Open Hole	8.50			16187.00	6,074.00	12.50
Casing	4.89	5.50	17.00	16177.00	6,074.00	

**Shoe Length (ft):** 66

## HARDWARE

<b>Bottom Plug Used?</b>	NO	<b>Tool Type</b>	FLOAT COLLAR
<b>Top Plug Used?</b>	YES	<b>Tool Depth (ft)</b>	16111
<b>Top Plug Provided By</b>	3RDPARTY DART	<b>Max Casing Pressure - Rated (psi)</b>	5320 PSI
<b>Top Plug Size</b>	5.5	<b>Max Casing Pressure - Operated (psi)</b>	3200 PSI
<b>Centralizers Used</b>	NO	<b>Pipe Movement</b>	NO
<b>Landing Collar Depth (ft)</b>	16111.00	<b>Job Pumped Through</b>	CEMENT HEAD
		<b>Top Connection Thread</b>	8RD
		<b>Top Connection Size</b>	5.5

# Cementing Treatment



## CIRCULATION PRIOR TO JOB

Well Circulated By	RIG	Solids Present at End of Circulation	NO
Circulation Prior to Job	YES	10 sec SGS	6
Circulation Time (min)	180 MIN	10 min SGS	9
Circulation Rate (bpm)	8BPM	30 min SGS	13
Circulation Volume (bbls)	2300 BBLS	Flare Prior to/during the Cement Job	NO
Lost Circulation Prior to Cement Job	NO	Gas Present	NO
Mud Density In (ppg)	9.4		
Mud Density Out (ppg)	9.4		
PV Mud In	47		
PV Mud Out	47		
YP Mud In	8		
YP Mud Out	8		

## TEMPERATURE

Ambient Temperature (°F)	25	Slurry Cement Temperature (°F)	60
Mix Water Temperature (°F)	60	Flow Line Temperature (°F)	110

## BJ FLUID DETAILS

Fluid Type	Fluid Name	Density (ppg)	Yield (Cu Ft/sk)	H2O Req. (gals/sk)	Planned Top of Fluid (Ft)	Length (Ft)	Vol (sk)	Vol (Cu Ft)	Vol (bbls)
Spacer / Pre Flush / Flush	IntegraGuard EZ Spacer	11.5000			0.00				40.0000
Lead Slurry	BJCem P100.3.01C	12.5000	2.0754	11.84	0.00	5,000.00	630	1,307.0000	232.7000
Tail Slurry	BJCem P50.6.01C	13.5000	1.4774	7.45	5,000.00	11,099.00	1,940	2,866.0000	510.4000
Displacement 2	Retarded Water	8.3337			15,197.00			0.0000	20.0000
Displacement Final	Displacement Final (Water)	8.3308			0.00			0.0000	353.3000

# Cementing Treatment



Fluid Type	Fluid Name	Component	Concentration	UOM
Spacer / Pre Flush / Flush	IntegraGuard EZ Spacer	SAND, S-8, Silica Flour, 200 Mesh	208.5300	PPB
Spacer / Pre Flush / Flush	IntegraGuard EZ Spacer	Spacer Surfactant, SS-247	0.5000	GPB
Spacer / Pre Flush / Flush	IntegraGuard EZ Spacer	EXTENDER, BENTONITE	5.0000	PPB
Spacer / Pre Flush / Flush	IntegraGuard EZ Spacer	RETARDER, R-31	0.5100	PPB
Spacer / Pre Flush / Flush	IntegraGuard EZ Spacer	SPACER SURFACTANT, SS-267	0.5000	GPB
Spacer / Pre Flush / Flush	IntegraGuard EZ Spacer	GELLANT WATER, GW-86	0.9000	PPB
Lead Slurry	BJCem P100.3.01C	Foam Preventer, FP-25	0.3000	BWOB
Lead Slurry	BJCem P100.3.01C	FLUID LOSS, FL-24	0.3000	BWOB
Lead Slurry	BJCem P100.3.01C	IntegraSeal CELLO	0.1300	LBS/SK
Lead Slurry	BJCem P100.3.01C	GELLANT WATER, GW-86	0.0500	BWOB
Lead Slurry	BJCem P100.3.01C	BONDING AGENT, BA-60	0.4000	BWOB
Lead Slurry	BJCem P100.3.01C	RETARDER, R-31	0.1700	BWOB
Lead Slurry	BJCem P100.3.01C	CEMENT, ASTM TYPE III	100.0000	PCT
Tail Slurry	BJCem P50.6.01C	CEMENT, CLASS G	50.0000	PCT
Tail Slurry	BJCem P50.6.01C	GELLANT WATER, GW-86	0.1000	BWOB
Tail Slurry	BJCem P50.6.01C	EXTENDER, BENTONITE	2.0000	BWOB
Tail Slurry	BJCem P50.6.01C	Foam Preventer, FP-25	0.3000	BWOB
Tail Slurry	BJCem P50.6.01C	RETARDER, SR-20	0.1000	BWOB
Tail Slurry	BJCem P50.6.01C	Flyash (Rockies)	50.0000	PCT
Tail Slurry	BJCem P50.6.01C	FLUID LOSS, FL-66	0.2000	BWOB
Displacement 2	Retarded Water	RETARDER, R-8L	0.5000	GPB
Displacement 2	Retarded Water	BIOCIDE, BIOC11139W	0.0100	GPB
Displacement Final	Displacement Final (Water)	BIOCIDE, BIOC11139W	0.0100	GPB

# Cementing Treatment



## TREATMENT SUMMARY

Time	Fluid	Rate (bpm)	Fluid Vol. (bbls)	Pipe Pressure (psi)
06:25	IntegraGuard EZ Spacer	5.00	40.00	700
06:47	BJCem P100.3.01C	6.00	232.70	800
07:02	BJCem P50.6.01C	6.00	510.40	950
09:12	Retarded Water	5.00	20.00	
09:20	Displacement Final (Water)	8.00	353.30	

## DISPLACEMENT AND END OF JOB SUMMARY

Displaced By	BJ SERVICES	Amount of Cement Returned/Reversed	80BLS
Calculated Displacement Volume (bbls)	374	Method Used to Verify Returns	VISUAL
Actual Displacement Volume (bbls)	374	Amount of Spacer to Surface	40
Did Float Hold?	Yes	Pressure Left on Casing (psi)	0
Bump Plug	YES	Amount Bled Back After Job	4 BBLS
Bump Plug Pressure (psi)	3200 PSI	Total Volume Pumped (bbls)	1157 BBLS
Were Returns Planned at Surface	YES	Top Out Cement Spotted	No
Cement returns During Job	YES	Lost Circulation During Cement Job	No

### Job Summary

PLUG LANDED ON CALCULATED THAT WAS 374 BBLS FLOAT IS HOLDING. GOT BACK 80 BBLS OF CEMENT AND 40 BBLS OF SPACER, ALL CEMENT WAS SCALED AND SAMPLES WERE TAKEN.WE HAD NO PROBLEMS ON THE JOB , JOB WENT WELL

Customer Name Bonanaza Creek

Well Name State Pronghorn V-29-30-XRLNB

Job Type Long String

District Cheyenne

Supervisor ALBERT SNYDER

Engineer



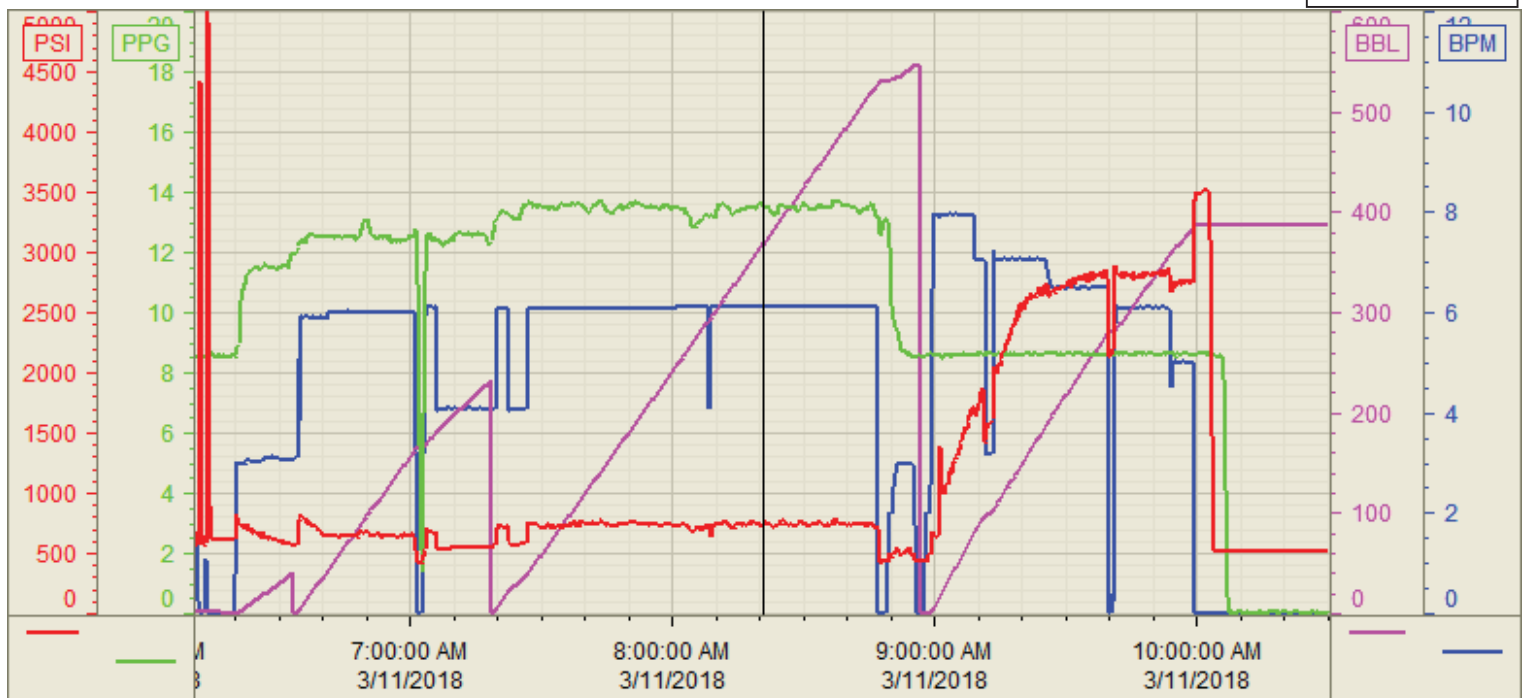
Seq No.	Start Date/Time	Category	Event	Equipment	Event ID	Density (lb/gal)	Pump Rate (bpm)	Pump Vol (bbls)	Pipe Pressure (psi)	Comments
1	3/10/2018 15:00		Called out							
2	3/11/2018 0:00		Requested on location							
3	3/10/2018 23:02		Arrived on location							
4	3/11/2018 1:00		Steacs briefing							
5	3/11/2018 13:00		rig up							
6	3/11/2018 2:00		Wait to circulate well							
7	3/11/2018 6:00		Safety Meeting		53					
8	3/11/2018 6:22		Fill Lines			8.33	3	3	700	Filled lines with water
9	3/11/2018 6:25		Pump Spacer		56	11.5	6	40	750	Mix and pump Spacer at 11.5#/gal
10	3/11/2018 6:47		Pump lead			12.5	6	233	800	Mix and pump Lead cement P100-.3.01c at 12.5# with 2.07yield and 11.43wr
11	3/11/2018 7:02		Pump Tail			13.5	6	508	925	Mix ad pump 1940 sks of P50-.6.01c at 13.5# with 1.47 yied and 7.45 wr
12	3/11/2018 9:10		Drop plug							Dropped dart
13	3/1/2018 9:12		Wash to the pit							Used their dart
14	3/11/2018 9:12		Pump Displacement		64	8.33	8	20	1500	R-8L/Biocide
15	3/11/2018 9:20		Pump Displacement		64	8.33	8	100	2000	Bioicide/ClayStabilizer
16	3/11/2018 9:34		Pump Displacement		64	8.33	8	150	2700	Bioicide/ClayStabilizer
17	3/11/2018 9:44		Pump Displacement		64	8.33	8	200	2700	Bioicide/ClayStabilizer
18	3/11/2018 9:49		Pump Displacement		64	8.33	8	230	2900	Good circulation
19	3/11/2018 10:01		Pump Displacement		64	8.33	7	254	3100	Got back 40 bbls spacer to surface
20	3/11/2018 10:04		Pump Displacement		64	8.33	7	294	3200	Got back 80 bbls of cement to surface
21	3/11/2018 10:10		Slow rate				5	374	2900/3200	
22	3/11/2018 10:13		land the plug							Plug landed on calculated
23	3/11/2018 10:20		Check the float							Float is holding and flowed back 4 bbls
24	3/11/2018 10:45		Steacs Briefing							Discussed rigging down
25	3/11/2018 11:00		rig down		73					Used team work to work safely
26	3/11/2018 11:30		After action Review							Discussed entire job and how it went
27	3/11/2018 12:00		Steacs journey							Discussed Driving back
28	3/11/2018 12:00		depart loocation							Talked about our trip back

Customer: BONANZA CREEK  
Well Number: V-29-30 XRLNB  
Lease Info: STATE PRONGHORN



Print Date/Time

3/11/2018 11:06:04 AM



	Name	Y value	X value/time stamp	Tag name Y
1	DS - Press (PSI)	738.1	3/11/2018 8:20:41 AM	Cementer\DS_DISCHARGE_PRESS_DIAL
2	DH - Density (PPG)	13.60 i.	3/11/2018 8:20:37 AM i.	Cementer\DENSITY2_ACTUAL_RATE
3	Down Hole Total (BBLs)	367.3	3/11/2018 8:20:31 AM	Cementer\DOWNHOLE_FLOW_TOTAL
4	Combined Rate	6.11	3/11/2018 8:20:31 AM	Cementer\Flow_Combined
5				

Source: Control1 11:05:59 AM