



# Bonanza Creek Energy

## Production Post Job Report

---

State Pronghorn W42-29-30XRLNB

S:28 T:5N R:61W Weld CO

Quote #:

I Execution #:

---



## Bonanza Creek Energy

Attention: Mr. Joel Dill | (720) 633-5871 | JDill@bonanzacrk.com

Bonanza Creek Energy | 410 17th St Suite 1400 | Denver, CO. 80202

---

Dear Mr. Joel Dill,

Thank you for the opportunity to provide cementing services on this well. BJ Services strives to achieve complete customer satisfaction. If you have any questions regarding the services or data provided, please contact BJ Services at any time.

Sincerely,  
Jacob Ojeda  
Field Engineer I | (763) 516-3012 | jacob.ojeda@bjservices.com

Field Office 1716 East Allison Rd., Cheyenne WY, 82007  
Phone: (307) 638-5585

Sales Office 999 18th St. Suite 1200 Denver, CO 80202  
Phone: (281) 408-2361

---

# Cementing Treatment



<b>Start Date</b>	3/21/18	<b>Well</b>	W42-29-30XRLNB State Pronghorn
<b>End Date</b>	3/21/18	<b>County</b>	WELD
<b>Client</b>	BONANZA CREEK ENERGY	<b>State/Province</b>	CO
<b>Client Field Rep</b>	Sam	<b>API</b>	05-123-44114
<b>Service Supervisor</b>	C. Johnson	<b>Rig</b>	Xtreme 19
<b>District</b>	Cheyenne, WY	<b>Type of Job</b>	Long String

## WELL GEOMETRY

Type	ID (in)	OD (in)	Wt. (lb./ft)	MD (ft)	TVD (ft)	Excess (%)
Previous Casing	8.92	9.63	36.00	1,628.00	1,628.00	
Open Hole	8.50			16,224.00	6,046.00	12.50
Casing	4.89	5.50	17.00	16,212.00	6,046.00	

**Shoe Length (ft):** 42

## HARDWARE

<b>Bottom Plug Used?</b>	No	<b>Landing Collar Depth (ft)</b>	16,170
<b>Top Plug Used?</b>	Yes	<b>Job Pumped Through</b>	Cement Head
<b>Top Plug Provided By</b>	Team Oil Tools	<b>Top Connection Thread</b>	LTC
<b>Top Plug Size</b>	5.5	<b>Top Connection Size</b>	5.5

## CIRCULATION PRIOR TO JOB

<b>Well Circulated By</b>	Rig	<b>Mud Density Out (ppg)</b>	9.5
<b>Circulation Prior to Job</b>	Yes	<b>Solids Present at End of Circulation</b>	No
<b>Lost Circulation Prior to Cement Job</b>	No	<b>Flare Prior to/during the Cement Job</b>	No
<b>Mud Density In (ppg)</b>	9.5	<b>Gas Present</b>	No

## TEMPERATURE

<b>Ambient Temperature (°F)</b>	55	<b>Mix Water Temperature (°F)</b>	65
---------------------------------	----	-----------------------------------	----

# Cementing Treatment



## BJ FLUID DETAILS

Fluid Type	Fluid Name	Density (ppg)	Yield (Cu Ft/sk)	H2O Req. (gals/sk)	Planned Top of Fluid (Ft)	Length (Ft)	Vol (sk)	Vol (Cu Ft)	Vol (bbls)
Spacer / Pre Flush / Flush	CD Spacer	11.5000			0.00				40.0000
Lead Slurry	P100-X2 (Lead)	12.5000	2.0754	11.84	0.00	5,000.00	630	1,307.0000	232.7000
Tail Slurry	P50-X1 (Tail)	13.5000	1.4774	7.45	5,000.00	11,180.00	1,954	2,887.0000	514.1000
Displacement 2	Retarded Water	8.3337			15,278.00			0.0000	20.0000
Displacement Final	Displacement Final (Water)	8.3308			0.00			0.0000	355.2000

# Cementing Treatment



Fluid Type	Fluid Name	Component	Concentration	UOM
Spacer / Pre Flush / Flush	CD Spacer	GELLANT WATER, GW-86	0.9000	PPB
Spacer / Pre Flush / Flush	CD Spacer	EXTENDER, BENTONITE	5.0000	PPB
Spacer / Pre Flush / Flush	CD Spacer	SAND, S-8, Silica Flour, 200 Mesh	208.5300	PPB
Spacer / Pre Flush / Flush	CD Spacer	Spacer Surfactant, SS-247	0.5000	GPB
Spacer / Pre Flush / Flush	CD Spacer	SPACER SURFACTANT, SS-267	0.5000	GPB
Spacer / Pre Flush / Flush	CD Spacer	RETARDER, R-31	0.5100	PPB
Lead Slurry	P100-X2 (Lead)	GELLANT WATER, GW-86	0.0500	BWOB
Lead Slurry	P100-X2 (Lead)	IntegraSeal CELLO	0.1300	LBS/SK
Lead Slurry	P100-X2 (Lead)	CEMENT, ASTM TYPE III	100.0000	PCT
Lead Slurry	P100-X2 (Lead)	BONDING AGENT, BA-60	0.4000	BWOB
Lead Slurry	P100-X2 (Lead)	FLUID LOSS, FL-24	0.3000	BWOB
Lead Slurry	P100-X2 (Lead)	RETARDER, R-31	0.1700	BWOB
Lead Slurry	P100-X2 (Lead)	Foam Preventer, FP-25	0.3000	BWOB
Tail Slurry	P50-X1 (Tail)	EXTENDER, BENTONITE	2.0000	BWOB
Tail Slurry	P50-X1 (Tail)	Flyash (Rockies)	50.0000	PCT
Tail Slurry	P50-X1 (Tail)	CEMENT, CLASS G	50.0000	PCT
Tail Slurry	P50-X1 (Tail)	FLUID LOSS, FL-66	0.2000	BWOB
Tail Slurry	P50-X1 (Tail)	GELLANT WATER, GW-86	0.1000	BWOB
Tail Slurry	P50-X1 (Tail)	Foam Preventer, FP-25	0.3000	BWOB
Tail Slurry	P50-X1 (Tail)	RETARDER, SR-20	0.1000	BWOB
Displacement 2	Retarded Water	BIOCIDE, BIOC11139W	0.0100	GPB
Displacement 2	Retarded Water	RETARDER, R-8L	0.5000	GPB
Displacement Final	Displacement Final (Water)	BIOCIDE, BIOC11139W	0.0100	GPB

## TREATMENT SUMMARY

Fluid	Rate (bpm)	Fluid Vol. (bbls)	Pipe Pressure (psi)
CD Spacer	5.00	40.00	400
P100-X2 (Lead)	6.00	232.70	500
P50-X1 (Tail)	6.00	514.10	500
Retarded Water	5.00	20.00	1000
Displacement Final (Water)	8.00	355.20	2700

# Cementing Treatment



## DISPLACEMENT AND END OF JOB SUMMARY

Displaced By	BJ	Amount of Cement Returned/Reversed	60
Calculated Displacement Volume (bbls)	375	Method Used to Verify Returns	Visual
Actual Displacement Volume (bbls)	375	Amount of Spacer to Surface	40
Did Float Hold?	Yes	Pressure Left on Casing (psi)	0
Bump Plug	Yes	Amount Bled Back After Job	4
Bump Plug Pressure (psi)	2600	Total Volume Pumped (bbls)	1170
Were Returns Planned at Surface	Yes	Top Out Cement Spotted	No
Cement returns During Job	Yes	Lost Circulation During Cement Job	No

Customer Name Bonanza Creek  
 Well Name State Pronghorn W42-29-30XRLNB  
 Job Type Long String

District Cheyenne  
 Supervisor C. Johnson  
 Engineer \_\_\_\_\_



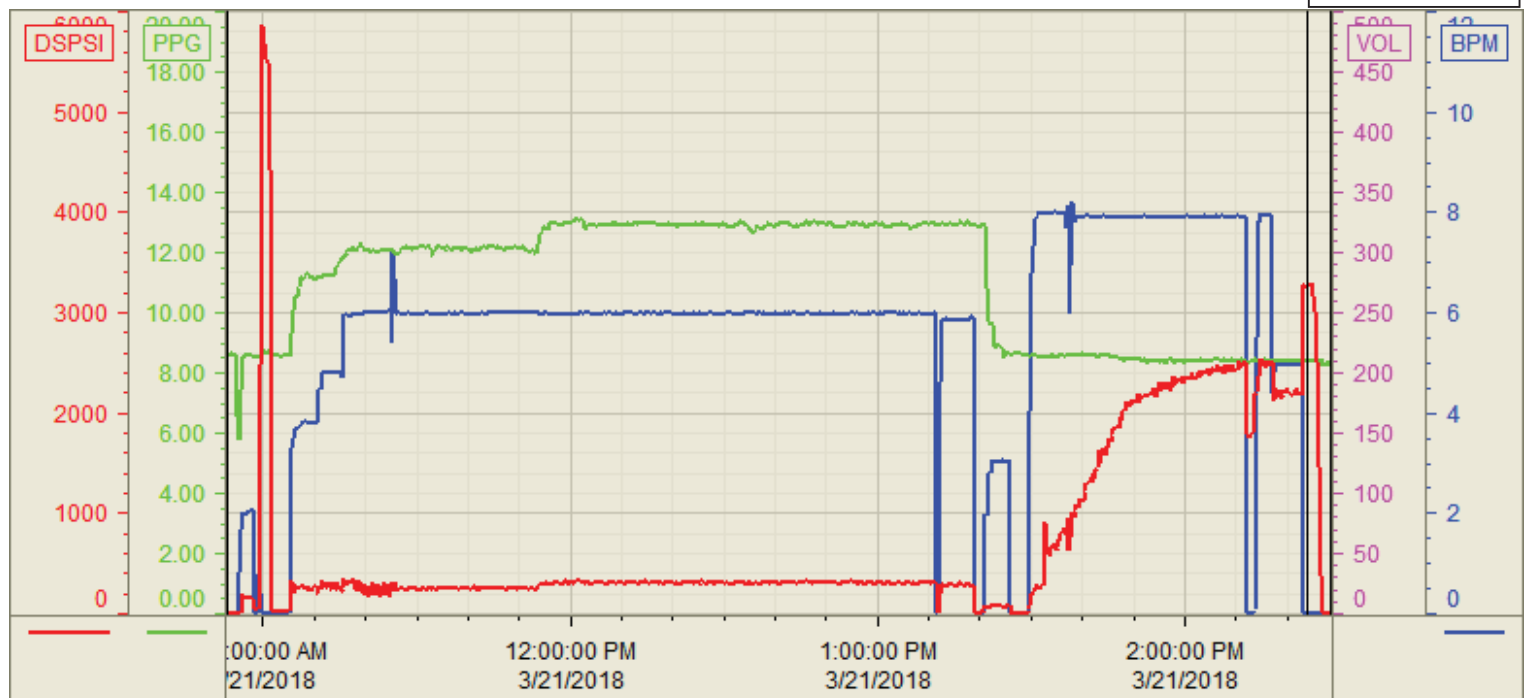
Seq No.	Start Date/Time	Category	Event	Event ID	Density (lb/gal)	Pump Rate (bpm)	Pump Vol (bbls)	Pipe Pressure (psi)	Comments
1	3/21/18 0400	Mobilization	Callout	1					Crew called out requested on location at 0800
2	3/21/18 0800	Mobilization	Arrive on Location	48					Crew departed yard at 0600 and arrived at location at 0800
3	3/21/18 0810	Operational	Safety Meeting	53					Safety meeting
4	3/21/18 0820	Operational	Spot Units	49					Spotted all equipment
5	3/21/18 0830	Operational	Rig Up	50					Rigged up all equipment
6	3/21/18 1000	Operational	Safety Meeting	53					Safety meeting
7	3/21/18 1056	Operational	Prime Up	52	8.3	2	5	250	Fill lines with 5 bbls fresh water
8	3/21/18 1059	Operational	Pressure Test	54					Pressure test lines to 5000 psi
9	3/21/18 1105	Operational	Pump Spacer	56	11.5	5	40	400	Pump 40 bbls spacer at 11.5 ppg
10	3/21/18 1115	Operational	Pump Lead Cement	58	12.5	6	233	500	Pump 233 bbls lead cement at 12.5 ppg (630 sks, 2.08 Y, 11.84 gal/sk)
11	3/21/18 1154	Operational	Pump Tail Cement	60	13.5	6	515	500	Pump 515 bbls tail cement at 13.5 ppg (1954 sks, 1.48 Y, 7.45 gal/sk)
12	3/21/18 1319	Operational	Other (See comments)	76					Shutdown
13	3/21/18 1320	Operational	Clean Pumps and Lines	62					Wash pumps and lines to pit
14	3/21/18 1326	Operational	Drop Top Plug	63					Drop third party plug
15	3/21/18 1327	Operational	Pump Displacement	64	8.34	8	350	2700	Pump 375 bbls water displacement
16	3/21/18 1406	Operational	Spacer Back to Surface	65					Spacer back to surface at 275 bbls away, 40 bbls spacer to surface
17	3/21/18 1412	Operational	Cement Back to Surface	66					Cement back to surface at 315 bbls away, 60 bbls cement to surface
18	3/21/18 1417	Operational	Other (See comments)	76	8.34	5	25	2100	Slow pump rate to 5 bpm at 350 bbls away
19	3/21/18 1423	Operational	Land Plug	67					Land plug at 2600 psi took to 3100 psi
20	3/21/18 1426	Operational	Check Floats	68					Check floats, floats holding, 4 bbls back
21	3/21/18 1445	Operational	Safety Meeting	53					Safety meeting
22	3/21/18 1500	Operational	Rig Down	73					Rigged down all equipment
23	3/21/18 1630	Mobilization	Leave Location	74					Crew departed location

Customer: Bonanza Creek  
Well Number: W42-29-30XRLNB  
Lease Info: State Pronghorn



Print Date/Time

3/21/2018 2:58:14 PM



	Name	Y value	X value/time stamp	Tag name Y
1	DS - Press(PSI)	3281.5 i.	3/21/2018 2:24:03 PM i.	Cementer\DS_DISCHARGE_PRESS_DIAL
2	DH - Density (PPG)	8.39	3/21/2018 2:23:58 PM	Cementer\DENSITY2_ACTUAL_RATE
3	Combined rate (BPM)	0.00	3/21/2018 2:24:04 PM	Cementer\Flow_Combined
4				
5				

Source: Control1 2:58:09 PM