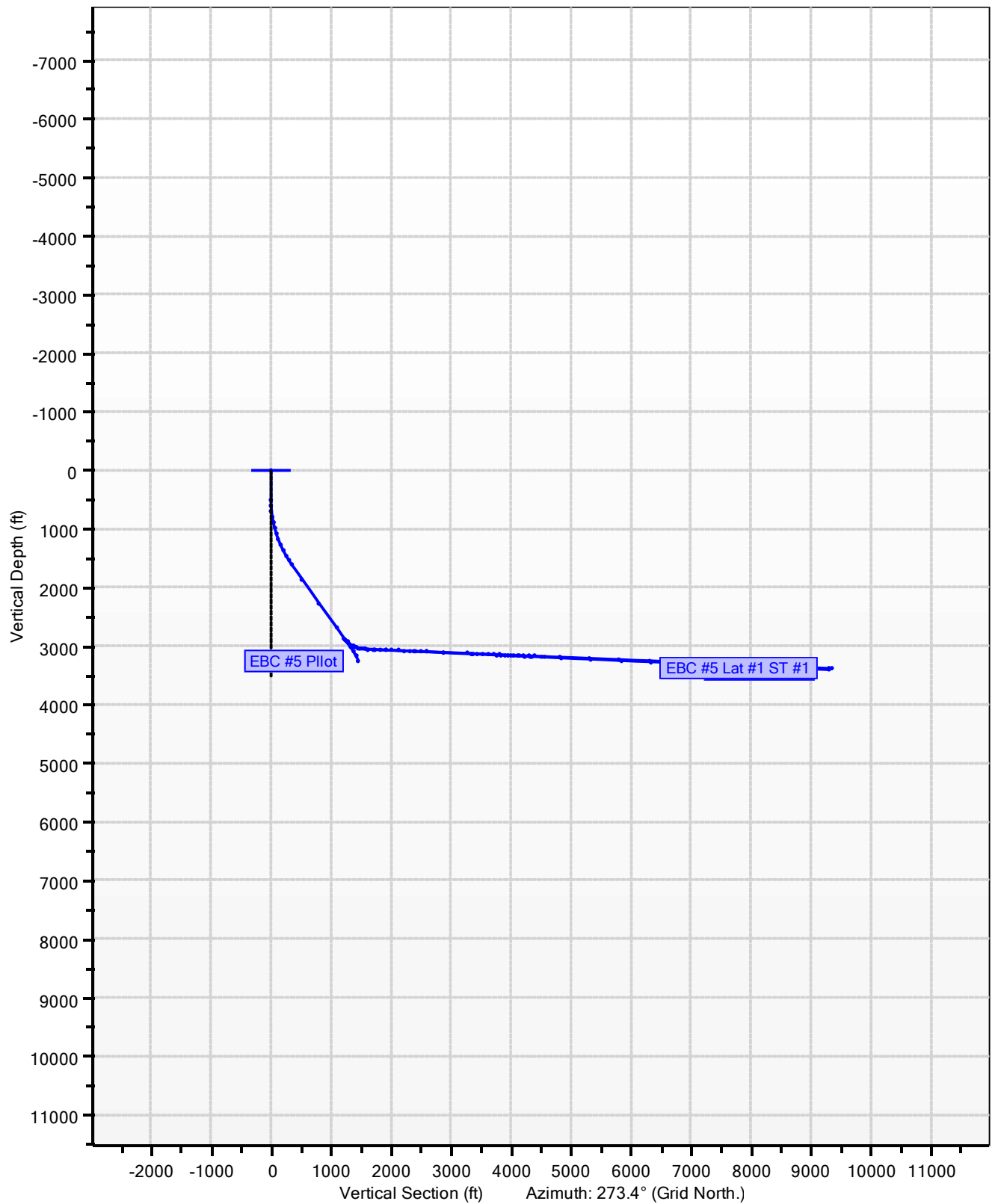


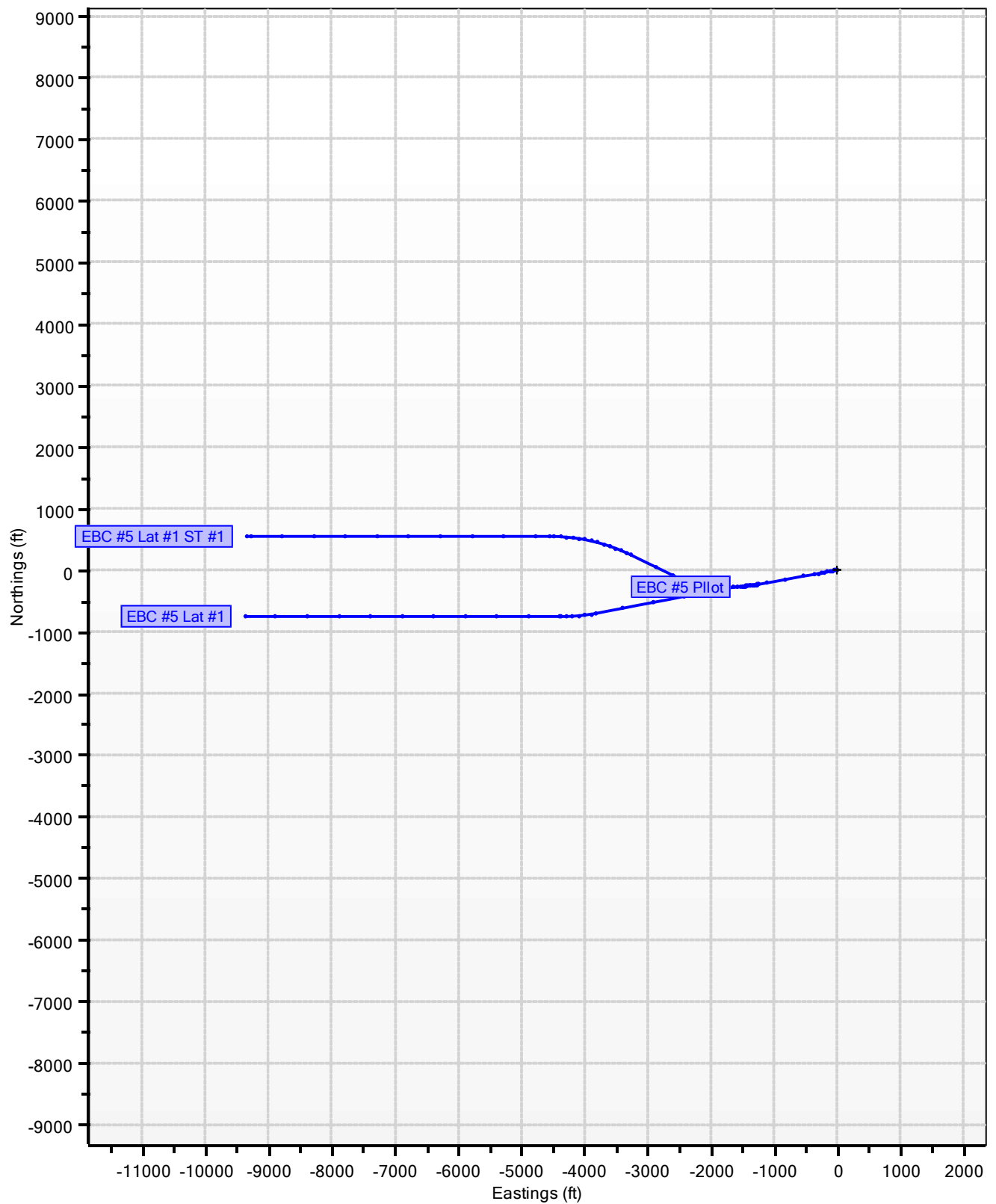
**East Bull Creek Well
EBC Pad 3
EBC #5
EBC #5 Lat #1 ST #1**

Catamount Energy Partners Proposal Report

EBC Pad 3, EBC #5



EBC Pad 3, EBC #5



Catamount Energy Partners

Proposal Report



Database:	San Juan Basin	Local Coordinate Reference:	EBC #5
Company:		TVD Reference:	EBC #5
Project:	East Bull Creek Well	MD Reference:	EBC #5
Site:	EBC Pad 3	North reference:	Grid North
Well:	EBC #5	Survey Calculation Method:	Minimum Curvature
Wellbore:			
Proposal:	EBC #5 Lat #1 ST #1		

Project	East Bull Creek Well		
Map System:	HPGN Colorado State Planes	System Datum:	Mean Sea Level
Geo Datum:	High Precision GPS Network (aka HARN, NAD83/9)		
Map Zone:	Southern Zone		

Site	EBC Pad 3			
Site Position:		Northing:	0	Latitude: 33.48902771° N
From:	Map	Easting:	0	Longitude: 115.33027986° W
Position Uncertainty:	6946ft	Slot Radius:	0in	Grid Convergence: -6.0°

Well	EBC #5			
Well Position:	+N/-S	1187929ft	Northing:	+1187929
	+E/-W	2445884ft	Easting:	+2445884
Position Uncertainty:		1ft	Wellhead Elevation:	6946ft
			Latitude:	37.16729125° N
			Longitude:	107.40172813° W
			Ground Level:	6930ft

Magnetics	Model Name	Sample Date	Declination (°)	Dip Angle (°)	Field Strength (nT)
	User Defined	2/9/2018	0.0	0.0	0.0

Proposal	EBC #5 Lat #1 ST #1		
Audit Notes:			
Version:	Phase:	Tie On Depth:	3636ft

Vertical Section:	Depth from TVD (ft)	+N/-S (ft)	+E/-W (ft)	Direction (°)
	0	0	0	273.4

Plan Sections										
Measured Depth (ft)	Inclination (°)	Azimuth (°)	Vertical Depth (ft)	+N/-S (ft)	+E/-W (ft)	Dogleg Rate (°/100ft)	Build Rate (°/100ft)	Turn Rate (°/100ft)	TFO (°)	Target
3636	87.5	264.4	3054	-271	-1575					
4702	87.8	296.4	3099	-81	-2608	3.0	0.0	3.0	90.3	
5441	87.8	296.4	3127	248	-3269	0.0	0.0	0.0	0.0	
6761	87.6	270.0	3182	547	-4542	2.0	0.0	-2.0	-91.0	
11561	87.6	270.0	3386	547	-9338	0.0	0.0	0.0	0.0	EBC 5 Lat 1 ST 1 BHL

Planned Survey											
Measured Depth (ft)	Incl. (°)	Az. (°)	Vertical Depth (ft)	Sub Sea Depth (ft)	+N/-S (ft)	+E/-W (ft)	Vertical Section (ft)	Closure Distance (ft)	Closure Azimuth (°)	Dogleg Rate (°/100ft)	Comments/ Formations
0	0.0	0.0	0	-6946	0	0	0	0	0.0	0.0	
100	0.0	0.0	100	-6846	0	0	0	0	0.0	0.0	
200	0.0	0.0	200	-6746	0	0	0	0	0.0	0.0	
300	0.0	0.0	300	-6646	0	0	0	0	0.0	0.0	
400	0.0	0.0	400	-6546	0	0	0	0	0.0	0.0	
500	0.0	0.0	500	-6446	0	0	0	0	0.0	0.0	
510	0.3	259.5	510	-6436	0	0	0	0	259.5	3.0	
540	1.2	259.5	540	-6406	0	0	0	0	259.5	3.0	
570	2.1	259.5	570	-6376	0	-1	1	1	259.5	3.0	
600	3.0	259.5	600	-6346	0	-3	3	3	259.5	3.0	

Catamount Energy Partners

Proposal Report



Database:	San Juan Basin	Local Coordinate Reference:	EBC #5
Company:		TVD Reference:	EBC #5
Project:	East Bull Creek Well	MD Reference:	EBC #5
Site:	EBC Pad 3	North reference:	Grid North
Well:	EBC #5	Survey Calculation Method:	Minimum Curvature
Wellbore:			
Proposal:	EBC #5 Lat #1 ST #1		

Planned Survey											
Measured Depth (ft)	Incl. (°)	Az. (°)	Vertical Depth (ft)	Sub Sea Depth (ft)	+N/-S (ft)	+E/-W (ft)	Vertical Section (ft)	Closure Distance (ft)	Closure Azimuth (°)	Dogleg Rate (°/100ft)	Comments/ Formations
630	3.9	259.5	630	-6316	-1	-4	4	4	259.5	3.0	
660	4.8	259.5	660	-6286	-1	-7	7	7	259.5	3.0	
690	5.7	259.5	690	-6256	-2	-9	9	9	259.5	3.0	
720	6.6	259.5	720	-6226	-2	-12	12	13	259.5	3.0	
750	7.5	259.5	749	-6197	-3	-16	16	16	259.5	3.0	
780	8.4	259.5	779	-6167	-4	-20	20	20	259.5	3.0	
810	9.3	259.5	809	-6137	-5	-25	24	25	259.5	3.0	
840	10.2	259.5	838	-6108	-6	-30	29	30	259.5	3.0	
870	11.1	259.5	868	-6078	-7	-35	35	36	259.5	3.0	
900	12.0	259.5	897	-6049	-8	-41	41	42	259.5	3.0	
930	12.9	259.5	926	-6020	-9	-47	47	48	259.5	3.0	
960	13.8	259.5	956	-5990	-10	-54	54	55	259.5	3.0	
990	14.7	259.5	985	-5961	-11	-61	61	63	259.5	3.0	
1020	15.6	259.5	1014	-5932	-13	-69	68	70	259.5	3.0	
1050	16.5	259.5	1042	-5904	-14	-77	76	79	259.5	3.0	
1080	17.4	259.5	1071	-5875	-16	-86	85	87	259.5	3.0	
1110	18.3	259.5	1100	-5846	-18	-95	94	97	259.5	3.0	
1140	19.2	259.5	1128	-5818	-19	-104	103	106	259.5	3.0	
1170	20.1	259.5	1156	-5790	-21	-114	113	116	259.5	3.0	
1200	21.0	259.5	1184	-5762	-23	-125	123	127	259.5	3.0	
1230	21.9	259.5	1212	-5734	-25	-136	134	138	259.5	3.0	
1260	22.8	259.5	1240	-5706	-27	-147	145	149	259.5	3.0	
1290	23.7	259.5	1268	-5678	-29	-158	156	161	259.5	3.0	
1320	24.6	259.5	1295	-5651	-32	-170	168	173	259.5	3.0	
1350	25.5	259.5	1322	-5624	-34	-183	181	186	259.5	3.0	
1380	26.4	259.5	1349	-5597	-36	-196	193	199	259.5	3.0	
1410	27.3	259.5	1376	-5570	-39	-209	207	213	259.5	3.0	
1440	28.2	259.5	1403	-5543	-41	-223	220	227	259.5	3.0	
1470	29.1	259.5	1429	-5517	-44	-237	234	241	259.5	3.0	
1500	30.0	259.5	1455	-5491	-47	-252	248	256	259.5	3.0	
1530	30.9	259.5	1481	-5465	-50	-267	263	271	259.5	3.0	
1560	31.8	259.5	1506	-5440	-52	-282	278	287	259.5	3.0	
1590	32.7	259.5	1532	-5414	-55	-298	294	303	259.5	3.0	
1620	33.6	259.5	1557	-5389	-58	-314	310	319	259.5	3.0	
1650	34.5	259.5	1582	-5364	-61	-330	326	336	259.5	3.0	
1680	35.4	259.5	1606	-5340	-65	-347	343	353	259.5	3.0	
1686	35.6	259.5	1611	-5335	-65	-350	346	356	259.5	3.0	
1700	35.6	259.5	1623	-5323	-67	-359	354	365	259.5	0.0	
1800	35.6	259.5	1704	-5242	-77	-416	411	423	259.5	0.0	
1900	35.6	259.5	1785	-5161	-88	-473	467	481	259.5	0.0	
2000	35.6	259.5	1867	-5079	-99	-530	523	539	259.5	0.0	
2100	35.6	259.5	1948	-4998	-109	-587	580	597	259.5	0.0	
2200	35.6	259.5	2029	-4917	-120	-645	636	656	259.5	0.0	
2300	35.6	259.5	2111	-4835	-130	-702	693	714	259.5	0.0	
2400	35.6	259.5	2192	-4754	-141	-759	749	772	259.5	0.0	
2500	35.6	259.5	2273	-4673	-152	-816	806	830	259.5	0.0	
2600	35.6	259.5	2355	-4591	-162	-873	862	888	259.5	0.0	
2700	35.6	259.5	2436	-4510	-173	-930	919	946	259.5	0.0	
2800	35.6	259.5	2517	-4429	-184	-988	975	1005	259.5	0.0	
2900	35.6	259.5	2599	-4347	-194	-1045	1032	1063	259.5	0.0	

Catamount Energy Partners

Proposal Report



Database:	San Juan Basin	Local Coordinate Reference:	EBC #5
Company:		TVD Reference:	EBC #5
Project:	East Bull Creek Well	MD Reference:	EBC #5
Site:	EBC Pad 3	North reference:	Grid North
Well:	EBC #5	Survey Calculation Method:	Minimum Curvature
Wellbore:			
Proposal:	EBC #5 Lat #1 ST #1		

Planned Survey											
Measured Depth (ft)	Incl. (°)	Az. (°)	Vertical Depth (ft)	Sub Sea Depth (ft)	+N/-S (ft)	+E/-W (ft)	Vertical Section (ft)	Closure Distance (ft)	Closure Azimuth (°)	Dogleg Rate (°/100ft)	Comments/ Formations
3000	35.6	259.5	2680	-4266	-205	-1102	1088	1121	259.5	0.0	
3100	35.6	259.5	2761	-4185	-216	-1159	1145	1179	259.5	0.0	
3200	35.6	259.5	2843	-4103	-226	-1216	1201	1237	259.5	0.0	
3240	35.6	259.5	2875	-4071	-230	-1239	1224	1261	259.5	0.0	
3270	39.6	260.3	2899	-4047	-234	-1257	1242	1279	259.5	13.5	
3300	43.6	261.0	2921	-4025	-237	-1277	1261	1299	259.5	13.5	
3330	47.7	261.5	2942	-4004	-240	-1298	1282	1320	259.5	13.5	
3360	51.7	262.1	2962	-3984	-243	-1321	1304	1343	259.6	13.5	
3390	55.7	262.5	2980	-3966	-247	-1345	1328	1367	259.6	13.5	
3420	59.8	262.9	2996	-3950	-250	-1370	1353	1393	259.7	13.5	
3450	63.8	263.3	3010	-3936	-253	-1396	1379	1419	259.7	13.5	
3480	67.8	263.7	3022	-3924	-256	-1423	1406	1446	259.8	13.5	
3510	71.9	264.0	3032	-3914	-259	-1451	1434	1474	259.9	13.5	
3540	75.9	264.3	3041	-3905	-262	-1480	1462	1503	260.0	13.5	
3570	80.0	264.7	3047	-3899	-265	-1509	1491	1532	260.0	13.5	
3583	81.7	264.8	3049	-3897	-266	-1522	1504	1545	260.1	13.5	
3600	83.6	264.7	3051	-3895	-268	-1539	1521	1562	260.1	11.0	
3630	86.9	264.5	3054	-3892	-270	-1569	1550	1592	260.2	11.0	
3636	87.5	264.4	3054	-3892	-271	-1575	1556	1598	260.2	11.0	
3660	87.5	265.2	3055	-3891	-273	-1598	1580	1622	260.3	3.0	
3690	87.5	266.1	3056	-3890	-275	-1628	1609	1651	260.4	3.0	
3720	87.5	267.0	3058	-3888	-277	-1658	1639	1681	260.5	3.0	
3750	87.5	267.9	3059	-3887	-279	-1688	1669	1711	260.6	3.0	
3780	87.5	268.8	3060	-3886	-279	-1718	1699	1741	260.8	3.0	
3810	87.5	269.7	3061	-3885	-280	-1748	1729	1770	260.9	3.0	
3840	87.5	270.6	3063	-3883	-280	-1778	1759	1800	261.1	3.0	
3870	87.5	271.5	3064	-3882	-279	-1808	1789	1829	261.2	3.0	
3900	87.5	272.4	3065	-3881	-278	-1838	1819	1859	261.4	3.0	
3930	87.5	273.3	3067	-3879	-277	-1868	1849	1888	261.6	3.0	
3960	87.5	274.2	3068	-3878	-275	-1898	1878	1918	261.8	3.0	
3990	87.5	275.1	3069	-3877	-272	-1928	1908	1947	262.0	3.0	
4020	87.5	276.0	3070	-3876	-270	-1958	1938	1976	262.2	3.0	
4050	87.5	276.9	3072	-3874	-266	-1987	1968	2005	262.4	3.0	
4080	87.6	277.8	3073	-3873	-262	-2017	1998	2034	262.6	3.0	
4110	87.6	278.7	3074	-3872	-258	-2047	2028	2063	262.8	3.0	
4140	87.6	279.6	3076	-3870	-253	-2076	2058	2092	263.0	3.0	
4170	87.6	280.5	3077	-3869	-248	-2106	2088	2120	263.3	3.0	
4200	87.6	281.4	3078	-3868	-243	-2135	2117	2149	263.5	3.0	
4230	87.6	282.3	3079	-3867	-236	-2165	2147	2177	263.8	3.0	
4260	87.6	283.2	3081	-3865	-230	-2194	2177	2206	264.0	3.0	
4290	87.6	284.1	3082	-3864	-223	-2223	2206	2234	264.3	3.0	
4320	87.6	285.0	3083	-3863	-215	-2252	2236	2262	264.5	3.0	
4350	87.6	285.9	3084	-3862	-207	-2281	2265	2290	264.8	3.0	
4380	87.6	286.8	3086	-3860	-199	-2310	2294	2318	265.1	3.0	
4410	87.6	287.7	3087	-3859	-190	-2338	2323	2346	265.4	3.0	
4440	87.6	288.6	3088	-3858	-181	-2367	2352	2374	265.6	3.0	
4470	87.7	289.5	3089	-3857	-171	-2395	2381	2401	265.9	3.0	
4500	87.7	290.4	3091	-3855	-161	-2423	2410	2429	266.2	3.0	
4530	87.7	291.3	3092	-3854	-150	-2451	2438	2456	266.5	3.0	
4560	87.7	292.2	3093	-3853	-139	-2479	2467	2483	266.8	3.0	

Catamount Energy Partners

Proposal Report



Database:	San Juan Basin	Local Coordinate Reference:	EBC #5
Company:		TVD Reference:	EBC #5
Project:	East Bull Creek Well	MD Reference:	EBC #5
Site:	EBC Pad 3	North reference:	Grid North
Well:	EBC #5	Survey Calculation Method:	Minimum Curvature
Wellbore:			
Proposal:	EBC #5 Lat #1 ST #1		

Planned Survey											
Measured Depth (ft)	Incl. (°)	Az. (°)	Vertical Depth (ft)	Sub Sea Depth (ft)	+N/-S (ft)	+E/-W (ft)	Vertical Section (ft)	Closure Distance (ft)	Closure Azimuth (°)	Dogleg Rate (°/100ft)	Comments/ Formations
4590	87.7	293.1	3094	-3852	-127	-2507	2495	2510	267.1	3.0	
4620	87.7	294.0	3095	-3851	-115	-2534	2523	2537	267.4	3.0	
4650	87.7	294.9	3097	-3849	-103	-2562	2551	2564	267.7	3.0	
4680	87.8	295.8	3098	-3848	-90	-2589	2579	2590	268.0	3.0	
4702	87.8	296.4	3099	-3847	-81	-2608	2599	2609	268.2	3.0	
4800	87.8	296.4	3102	-3844	-37	-2696	2689	2696	269.2	0.0	
4900	87.8	296.4	3106	-3840	8	-2786	2781	2786	270.2	0.0	
5000	87.8	296.4	3110	-3836	52	-2875	2873	2876	271.0	0.0	
5100	87.8	296.4	3114	-3832	97	-2965	2965	2966	271.9	0.0	
5200	87.8	296.4	3118	-3828	141	-3054	3057	3057	272.6	0.0	
5300	87.8	296.4	3122	-3824	185	-3143	3149	3149	273.4	0.0	
5400	87.8	296.4	3126	-3820	230	-3233	3241	3241	274.1	0.0	
5441	87.8	296.4	3127	-3819	248	-3269	3278	3279	274.3	0.0	
5460	87.8	296.0	3128	-3818	257	-3287	3296	3297	274.5	2.0	
5490	87.8	295.4	3129	-3817	270	-3314	3324	3325	274.7	2.0	
5520	87.7	294.8	3130	-3816	282	-3341	3352	3353	274.8	2.0	
5550	87.7	294.2	3132	-3814	295	-3368	3380	3381	275.0	2.0	
5580	87.7	293.6	3133	-3813	307	-3395	3408	3409	275.2	2.0	
5610	87.7	293.0	3134	-3812	319	-3423	3436	3438	275.3	2.0	
5640	87.7	292.4	3135	-3811	330	-3451	3464	3466	275.5	2.0	
5670	87.7	291.8	3136	-3810	342	-3478	3492	3495	275.6	2.0	
5700	87.7	291.2	3138	-3808	353	-3506	3521	3524	275.7	2.0	
5730	87.7	290.6	3139	-3807	363	-3534	3550	3553	275.9	2.0	
5760	87.7	290.0	3140	-3806	374	-3562	3578	3582	276.0	2.0	
5790	87.7	289.4	3141	-3805	384	-3591	3607	3611	276.1	2.0	
5820	87.7	288.8	3142	-3804	394	-3619	3636	3640	276.2	2.0	
5850	87.7	288.2	3144	-3802	403	-3647	3665	3670	276.3	2.0	
5880	87.6	287.6	3145	-3801	413	-3676	3694	3699	276.4	2.0	
5910	87.6	287.0	3146	-3800	422	-3704	3723	3728	276.5	2.0	
5940	87.6	286.4	3147	-3799	430	-3733	3752	3758	276.6	2.0	
5970	87.6	285.8	3149	-3797	438	-3762	3781	3787	276.6	2.0	
6000	87.6	285.2	3150	-3796	446	-3791	3810	3817	276.7	2.0	
6030	87.6	284.6	3151	-3795	454	-3820	3840	3847	276.8	2.0	
6060	87.6	284.0	3152	-3794	462	-3849	3869	3876	276.8	2.0	
6090	87.6	283.4	3154	-3792	469	-3878	3899	3906	276.9	2.0	
6120	87.6	282.8	3155	-3791	476	-3907	3928	3936	276.9	2.0	
6150	87.6	282.2	3156	-3790	482	-3936	3958	3966	277.0	2.0	
6180	87.6	281.6	3157	-3789	488	-3966	3988	3996	277.0	2.0	
6210	87.6	281.0	3159	-3787	494	-3995	4017	4026	277.1	2.0	
6240	87.6	280.4	3160	-3786	500	-4025	4047	4056	277.1	2.0	
6270	87.6	279.8	3161	-3785	505	-4054	4077	4085	277.1	2.0	
6300	87.6	279.2	3162	-3784	510	-4084	4107	4115	277.1	2.0	
6330	87.6	278.6	3164	-3782	515	-4113	4136	4145	277.1	2.0	
6360	87.6	278.0	3165	-3781	519	-4143	4166	4175	277.1	2.0	
6390	87.6	277.4	3166	-3780	523	-4173	4196	4205	277.1	2.0	
6420	87.6	276.8	3168	-3778	527	-4202	4226	4235	277.1	2.0	
6450	87.6	276.2	3169	-3777	530	-4232	4256	4265	277.1	2.0	
6480	87.6	275.6	3170	-3776	533	-4262	4286	4295	277.1	2.0	
6510	87.6	275.0	3171	-3775	536	-4292	4316	4325	277.1	2.0	
6540	87.6	274.4	3173	-3773	538	-4322	4346	4355	277.1	2.0	

Catamount Energy Partners

Proposal Report



Database:	San Juan Basin	Local Coordinate Reference:	EBC #5
Company:		TVD Reference:	EBC #5
Project:	East Bull Creek Well	MD Reference:	EBC #5
Site:	EBC Pad 3	North reference:	Grid North
Well:	EBC #5	Survey Calculation Method:	Minimum Curvature
Wellbore:			
Proposal:	EBC #5 Lat #1 ST #1		

Planned Survey											
Measured Depth (ft)	Incl. (°)	Az. (°)	Vertical Depth (ft)	Sub Sea Depth (ft)	+N/-S (ft)	+E/-W (ft)	Vertical Section (ft)	Closure Distance (ft)	Closure Azimuth (°)	Dogleg Rate (°/100ft)	Comments/ Formations
6570	87.6	273.8	3174	-3772	541	-4352	4376	4385	277.1	2.0	
6600	87.6	273.2	3175	-3771	542	-4381	4406	4415	277.1	2.0	
6630	87.6	272.6	3176	-3770	544	-4411	4436	4445	277.0	2.0	
6660	87.6	272.0	3178	-3768	545	-4441	4466	4475	277.0	2.0	
6690	87.6	271.4	3179	-3767	546	-4471	4496	4505	277.0	2.0	
6720	87.6	270.8	3180	-3766	547	-4501	4526	4534	276.9	2.0	
6750	87.6	270.2	3182	-3764	547	-4531	4556	4564	276.9	2.0	
6761	87.6	270.0	3182	-3764	547	-4542	4567	4575	276.9	2.0	
6800	87.6	270.0	3184	-3762	547	-4581	4605	4614	276.8	0.0	
6900	87.6	270.0	3188	-3758	547	-4681	4705	4713	276.7	0.0	
7000	87.6	270.0	3192	-3754	547	-4781	4805	4812	276.5	0.0	
7100	87.6	270.0	3196	-3750	547	-4881	4905	4912	276.4	0.0	
7200	87.6	270.0	3201	-3745	547	-4981	5004	5011	276.3	0.0	
7300	87.6	270.0	3205	-3741	547	-5081	5104	5110	276.1	0.0	
7400	87.6	270.0	3209	-3737	547	-5181	5204	5209	276.0	0.0	
7500	87.6	270.0	3213	-3733	547	-5281	5304	5309	275.9	0.0	
7600	87.6	270.0	3218	-3728	547	-5381	5403	5408	275.8	0.0	
7700	87.6	270.0	3222	-3724	547	-5480	5503	5508	275.7	0.0	
7800	87.6	270.0	3226	-3720	547	-5580	5603	5607	275.6	0.0	
7900	87.6	270.0	3230	-3716	547	-5680	5703	5707	275.5	0.0	
8000	87.6	270.0	3235	-3711	547	-5780	5802	5806	275.4	0.0	
8100	87.6	270.0	3239	-3707	547	-5880	5902	5905	275.3	0.0	
8200	87.6	270.0	3243	-3703	547	-5980	6002	6005	275.2	0.0	
8300	87.6	270.0	3247	-3699	547	-6080	6101	6104	275.1	0.0	
8400	87.6	270.0	3252	-3694	547	-6180	6201	6204	275.1	0.0	
8500	87.6	270.0	3256	-3690	547	-6280	6301	6303	275.0	0.0	
8600	87.6	270.0	3260	-3686	547	-6380	6401	6403	274.9	0.0	
8700	87.6	270.0	3264	-3682	547	-6480	6500	6503	274.8	0.0	
8800	87.6	270.0	3269	-3677	547	-6579	6600	6602	274.8	0.0	
8900	87.6	270.0	3273	-3673	547	-6679	6700	6702	274.7	0.0	
9000	87.6	270.0	3277	-3669	547	-6779	6800	6801	274.6	0.0	
9100	87.6	270.0	3281	-3665	547	-6879	6899	6901	274.5	0.0	
9200	87.6	270.0	3286	-3660	547	-6979	6999	7000	274.5	0.0	
9300	87.6	270.0	3290	-3656	547	-7079	7099	7100	274.4	0.0	
9400	87.6	270.0	3294	-3652	547	-7179	7199	7200	274.4	0.0	
9500	87.6	270.0	3298	-3648	547	-7279	7298	7299	274.3	0.0	
9600	87.6	270.0	3303	-3643	547	-7379	7398	7399	274.2	0.0	
9700	87.6	270.0	3307	-3639	547	-7479	7498	7499	274.2	0.0	
9800	87.6	270.0	3311	-3635	547	-7579	7598	7598	274.1	0.0	
9900	87.6	270.0	3315	-3631	547	-7678	7697	7698	274.1	0.0	
10000	87.6	270.0	3320	-3626	547	-7778	7797	7798	274.0	0.0	
10100	87.6	270.0	3324	-3622	547	-7878	7897	7897	274.0	0.0	
10200	87.6	270.0	3328	-3618	547	-7978	7996	7997	273.9	0.0	
10300	87.6	270.0	3332	-3614	547	-8078	8096	8097	273.9	0.0	
10400	87.6	270.0	3337	-3609	547	-8178	8196	8196	273.8	0.0	
10500	87.6	270.0	3341	-3605	547	-8278	8296	8296	273.8	0.0	
10600	87.6	270.0	3345	-3601	547	-8378	8395	8396	273.7	0.0	
10700	87.6	270.0	3349	-3597	547	-8478	8495	8495	273.7	0.0	
10800	87.6	270.0	3354	-3592	547	-8578	8595	8595	273.6	0.0	
10900	87.6	270.0	3358	-3588	547	-8678	8695	8695	273.6	0.0	

Catamount Energy Partners

Proposal Report



Database:	San Juan Basin	Local Coordinate Reference:	EBC #5
Company:		TVD Reference:	EBC #5
Project:	East Bull Creek Well	MD Reference:	EBC #5
Site:	EBC Pad 3	North reference:	Grid North
Well:	EBC #5	Survey Calculation Method:	Minimum Curvature
Wellbore:			
Proposal:	EBC #5 Lat #1 ST #1		

Planned Survey											
Measured Depth (ft)	Incl. (°)	Az. (°)	Vertical Depth (ft)	Sub Sea Depth (ft)	+N/-S (ft)	+E/-W (ft)	Vertical Section (ft)	Closure Distance (ft)	Closure Azimuth (°)	Dogleg Rate (°/100ft)	Comments/ Formations
11000	87.6	270.0	3362	-3584	547	-8777	8794	8794	273.6	0.0	
11100	87.6	270.0	3366	-3580	547	-8877	8894	8894	273.5	0.0	
11200	87.6	270.0	3371	-3575	547	-8977	8994	8994	273.5	0.0	
11300	87.6	270.0	3375	-3571	547	-9077	9094	9094	273.4	0.0	
11400	87.6	270.0	3379	-3567	547	-9177	9193	9193	273.4	0.0	
11500	87.6	270.0	3383	-3563	547	-9277	9293	9293	273.4	0.0	
11561	87.6	270.0	3386	-3560	547	-9338	9354	9354	273.4	0.0	EBC 5 Lat 1 ST 1 BHL

Targets										
Target Name	-hit/miss target	-Shape	Dip Angle (°)	Dip Dir. (°)	TVD (ft)	+N/-S (ft)	+E/-W (ft)	Northing (ft)	Easting (ft)	Latitude Longitude
EBC 5 Lat 1 ST 1 BHL	- proposal hits the target center	- Point			3386	547	-9338	+1188476	+2436546	37.16826673° N 107.43380595° W

Checked By:	Approved By:	Date:
-------------	--------------	-------

Disclaimer Notice
Catamount Energy Partners makes no warranty of any kind with respect to the subject matter included herein or the completeness or accuracy of this document.
Catamount Energy Partners are not responsible for any actions (or lack thereof) taken as a result of relying on or in any way using information contained in this document and in no event shall be liable for any damages resulting from reliance on or use of this information.