

# CATAMOUNT ENERGY PARTNERS: EBC #5

SURFACE LOCATION: 946' FNL & 1534' FWL

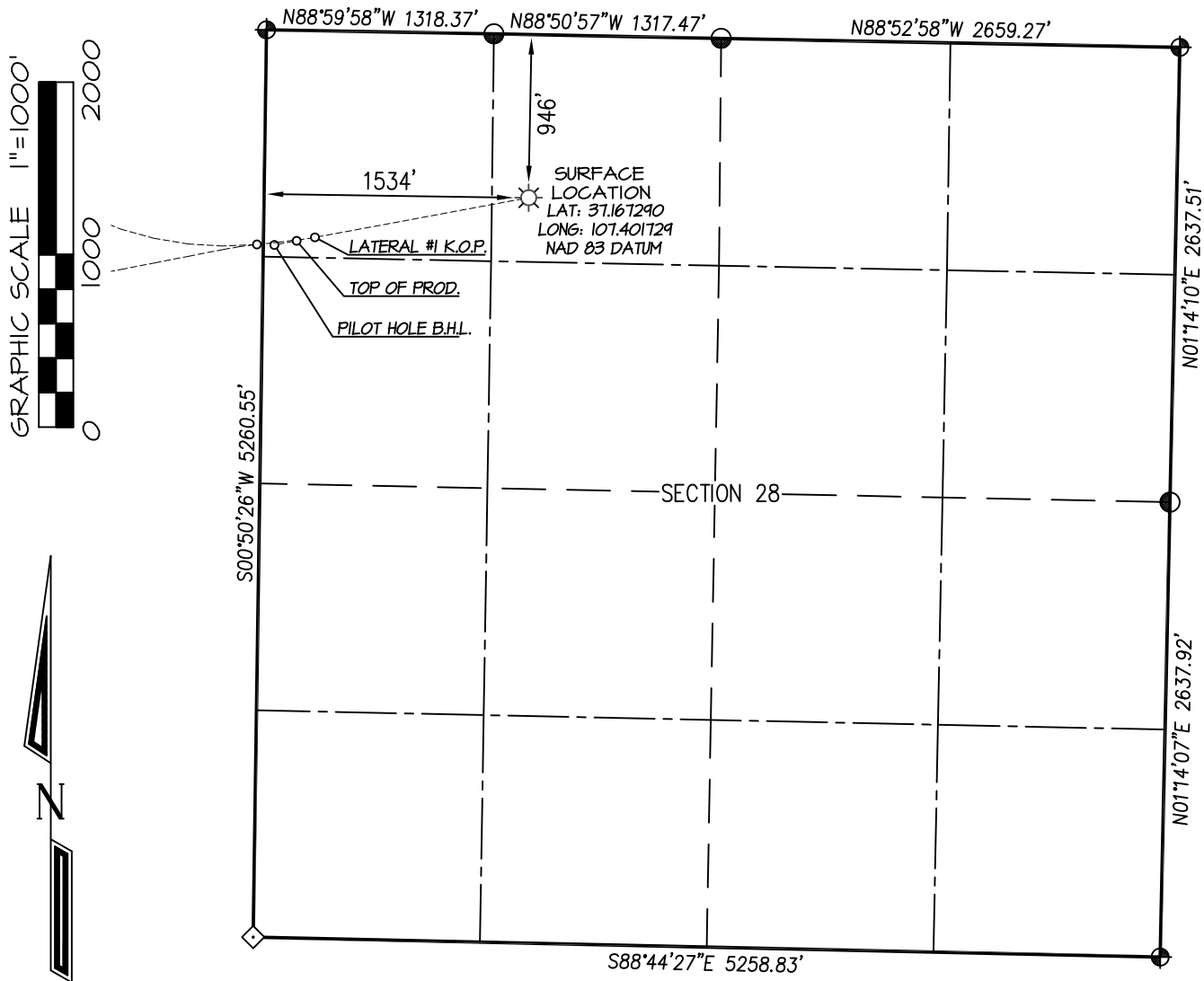
SECTION 28, T-34-N, R-5-W, S.U.L., N.M.P.M., ARCHULETA COUNTY, COLORADO. GROUND LEVEL ELEVATION: 6930'

LATERAL #1 BOTTOM HOLE LOCATION: 1897' FNL, 2563' FEL

SECTION 30, T-34-N, R-5-W, S.U.L., N.M.P.M., ARCHULETA COUNTY, COLORADO.

LATERAL #1 ST1 BOTTOM HOLE LOCATION: 596' FNL, 2567' FEL

SECTION 30, T-34-N, R-5-W, S.U.L., N.M.P.M., ARCHULETA COUNTY, COLORADO.



⊕ and ⊙ denote found 3-1/4" B.L.M. aluminum cap.  
◇ denotes single proportion calculated position

## NOTE:

SEE SHEET 4 OF 4 FOR COORDINATE TABLE,  
SURVEY NOTES, AND SURVEYOR'S CERTIFICATE.

SHEET 1 OF 4

DRAWN BY: K.R.	SURVEYED: 11/22/17	PREPARED FOR:
CHECKED BY: K.R.	DRAWN: 2/26/18	CATAMOUNT ENERGY PARTNERS
FILE NO.: CEP28WP	JOB NO. CEP28	
NORTHSTAR SURVEYING & MAPPING, INC.		
768 County Rd. 308 DURANGO, CO. 81303 (970) 385-0851		

# CATAMOUNT ENERGY PARTNERS: EBC #5

SURFACE LOCATION: 946' FNL & 1534' FWL

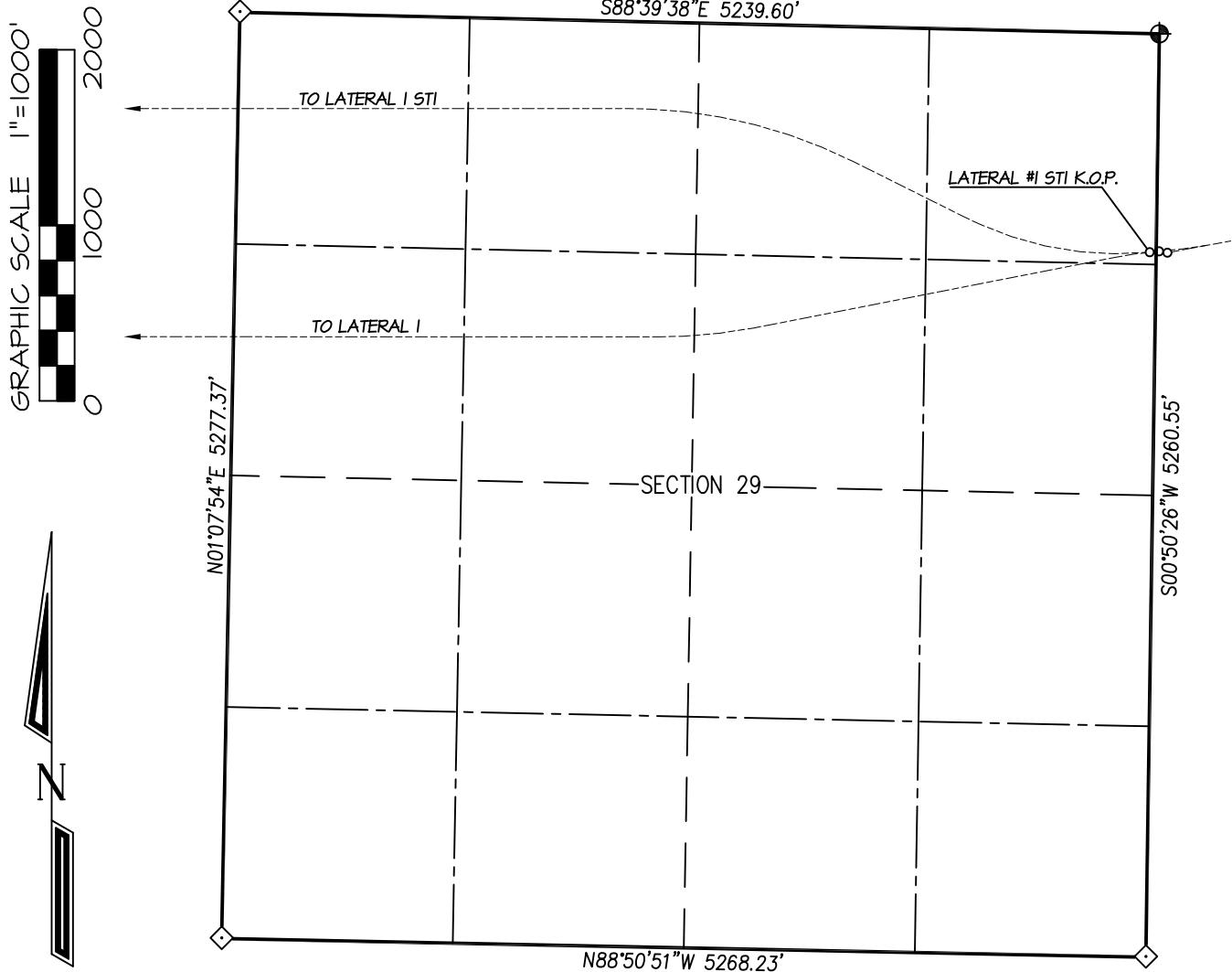
SECTION 28, T-34-N, R-5-W, S.U.L., N.M.P.M., ARCHULETA COUNTY, COLORADO. GROUND LEVEL ELEVATION: 6930'

LATERAL #1 BOTTOM HOLE LOCATION: 1897' FNL, 2563' FEL

SECTION 30, T-34-N, R-5-W, S.U.L., N.M.P.M., ARCHULETA COUNTY, COLORADO.

LATERAL #1 ST1 BOTTOM HOLE LOCATION: 596' FNL, 2567' FEL

SECTION 30, T-34-N, R-5-W, S.U.L., N.M.P.M., ARCHULETA COUNTY, COLORADO.



- ⊕ and ⊙ denote found 3-1/4" B.L.M. aluminum cap.
- ◇ denotes single proportion calculated position

## NOTE:

SEE SHEET 4 OF 4 FOR COORDINATE TABLE,  
SURVEY NOTES, AND SURVEYOR'S CERTIFICATE.

**SHEET 2 OF 4**

DRAWN BY: K.R.	SURVEYED: 11/22/17	DRAWN: 2/26/18	PREPARED FOR:	
			CATAMOUNT ENERGY PARTNERS	
CHECKED BY: K.R.	FILE NO.: CEP28WP	JOB NO. CEP28	<b>NORTHSTAR</b> <b>SURVEYING &amp; MAPPING, INC.</b> 768 County Rd. 308 DURANGO, CO. 81303 (970) 385-0851	

# CATAMOUNT ENERGY PARTNERS: EBC #5

SURFACE LOCATION: 946' FNL & 1534' FWL

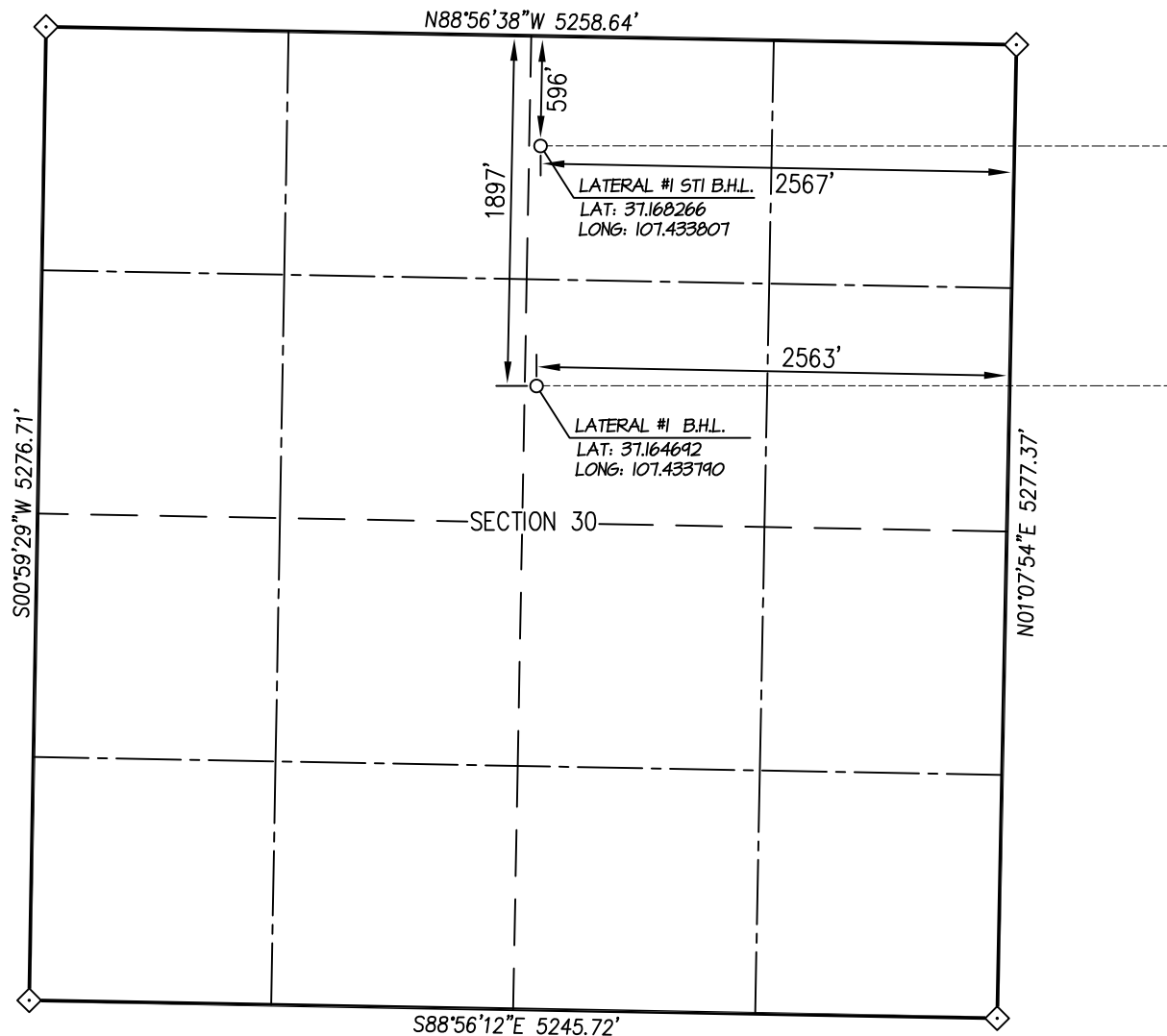
SECTION 28, T-34-N, R-5-W, S.U.L., N.M.P.M., ARCHULETA COUNTY, COLORADO. GROUND LEVEL ELEVATION: 6930'

LATERAL #1 BOTTOM HOLE LOCATION: 1897' FNL, 2563' FEL

SECTION 30, T-34-N, R-5-W, S.U.L., N.M.P.M., ARCHULETA COUNTY, COLORADO.

LATERAL #1 ST1 BOTTOM HOLE LOCATION: 596' FNL, 2567' FEL

SECTION 30, T-34-N, R-5-W, S.U.L., N.M.P.M., ARCHULETA COUNTY, COLORADO.



- ⊕ and ⊙ denote found 3-1/4" B.L.M. aluminum cap.
- ◇ denotes single proportion calculated position

## NOTE:

SEE SHEET 2 OF 2 FOR COORDINATE TABLE,  
SURVEY NOTES, AND SURVEYOR'S CERTIFICATE.

SHEET 3 OF 4

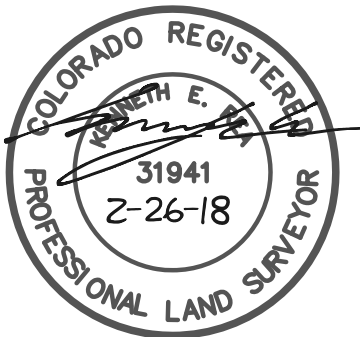
DRAWN BY: K.R.	SURVEYED: 11/22/17	CHECKED BY: K.R.	DRAWN: 2/26/18	FILE NO.: CEP28WP	JOB NO.: CEP28	PREPARED FOR:					
						CATAMOUNT ENERGY PARTNERS					
						NORTHSTAR SURVEYING & MAPPING, INC.  768 County Rd. 308 DURANGO, CO. 81303 (970) 385-0851					

**CATAMOUNT ENERGY PARTNERS: EBC #5****SURFACE LOCATION: 946' FNL & 1534' FWL****SECTION 28, T-34-N, R-5-W, S.U.L., N.M.P.M., ARCHULETA COUNTY, COLORADO. GROUND LEVEL ELEVATION: 6930'**

EBC 5	CSZ NAD '83	NAD '83	TIES	SEC/TWP/RNG
SURFACE HOLE LOCATION	N (Y) = 1,187,928.64' E (X) = 2,445,883.62'	LAT: 37.167290°N LONG: 107.401729°W	FNL = 946' FWL = 1534'	SECTION 28 T-34-N, R-5-W
TOP OF PRODUCTION	N (Y) = 1,187,678.64' E (X) = 2,444,538.62'	LAT: 37.166528°N LONG: 107.406327°W	FNL = 1220' FWL = 193'	SECTION 28 T-34-N, R-5-W
PILOT HOLE - BOTTOM HOLE LOCATION	N (Y) = 1,187,654.64' E (X) = 2,444,409.62'	LAT: 37.166455°N LONG: 107.406768°W	FNL = 1246' FWL = 64'	SECTION 28 T-34-N, R-5-W
LATERAL #1 K.O.P.	N (Y) = 1,187,698.64' E (X) = 2,444,644.62'	LAT: 37.166589°N LONG: 107.405964°W	FNL = 1198' FWL = 298'	SECTION 28 T-34-N, R-5-W
PROPOSED BOTTOM HOLE LOCATION LATERAL #1	N (Y) = 1,187,174.64' E (X) = 2,436,523.62'	LAT: 37.164692°N LONG: 107.433790°W	FNL = 1897' FEL = 2563'	SECTION 30 T-34-N, R-5-W
LATERAL #1 ST1 K.O.P.	N (Y) = 1,187,657.64' E (X) = 2,444,308.62'	LAT: 37.166458°N LONG: 107.407114°W	FNL = 1245' FEL = 37'	SECTION 29 T-34-N, R-5-W
PROPOSED BOTTOM HOLE LOCATION LATERAL #1 ST1	N (Y) = 1,188,475.64' E (X) = 2,436,545.62'	LAT: 37.168266°N LONG: 107.433807°W	FNL = 596' FEL = 2567'	SECTION 30 T-34-N, R-5-W

## NOTES:

1. WELL LOCATION FOOTAGE CALLS MEASURED PERPENDICULAR TO SECTION LINES.
2. WELL GPS OBSERVATION PERFORMED BY NELSON ROSS ON 11/22/17 - PDOP VALUE = 1.86
3. BEARINGS & DISTANCE SHOWN ARE FIELD MEASURED UNLESS OTHERWISE NOTED.
4. ALL MEASURED DISTANCES SHOWN ARE GRID DISTANCE WITH NO SCALE FACTOR APPLIED.
5. BEARINGS ARE BASED ON THE NORTH AMERICAN DATUM OF 1983, COLORADO SOUTH STATE PLANE COORDINATE SYSTEM, ZONE 0503.
6. ELEVATION IS BASED ON THE NORTH AMERICAN VERTICAL DATUM OF 1988 (GEOID12A).



I, KENNETH E. REA, A REGISTERED PROFESSIONAL LAND SURVEYOR IN THE STATE OF COLORADO, DO HEREBY CERTIFY THAT THE WELL LOCATION SHOWN ON THIS PLAT IS ACCURATELY PLOTTED FROM FIELD NOTES OF ACTUAL SURVEYS MADE UNDER MY DIRECT SUPERVISION, AND THAT THIS PLAT IS NOT A LAND SURVEY PLAT OR IMPROVEMENT SURVEY PLAT, AND THAT IT IS NOT TO BE RELIED UPON FOR THE ESTABLISHMENT OF FENCE, BUILDING, OR OTHER FUTURE IMPROVEMENT LINES.

**SHEET 4 OF 4**

DRAWN BY: K.R.		SURVEYED: 11/22/17		CHECKED BY: K.R.		DRAWN: 2/26/18		FILE NO.: CEP28WP		JOB NO. CEP28	
PREPARED FOR:											
<b>CATAMOUNT ENERGY PARTNERS</b>											
<b>NORTHSTAR</b> <b>SURVEYING &amp; MAPPING, INC.</b> 768 County Rd. 308 DURANGO, CO. 81303 (970) 385-0851											