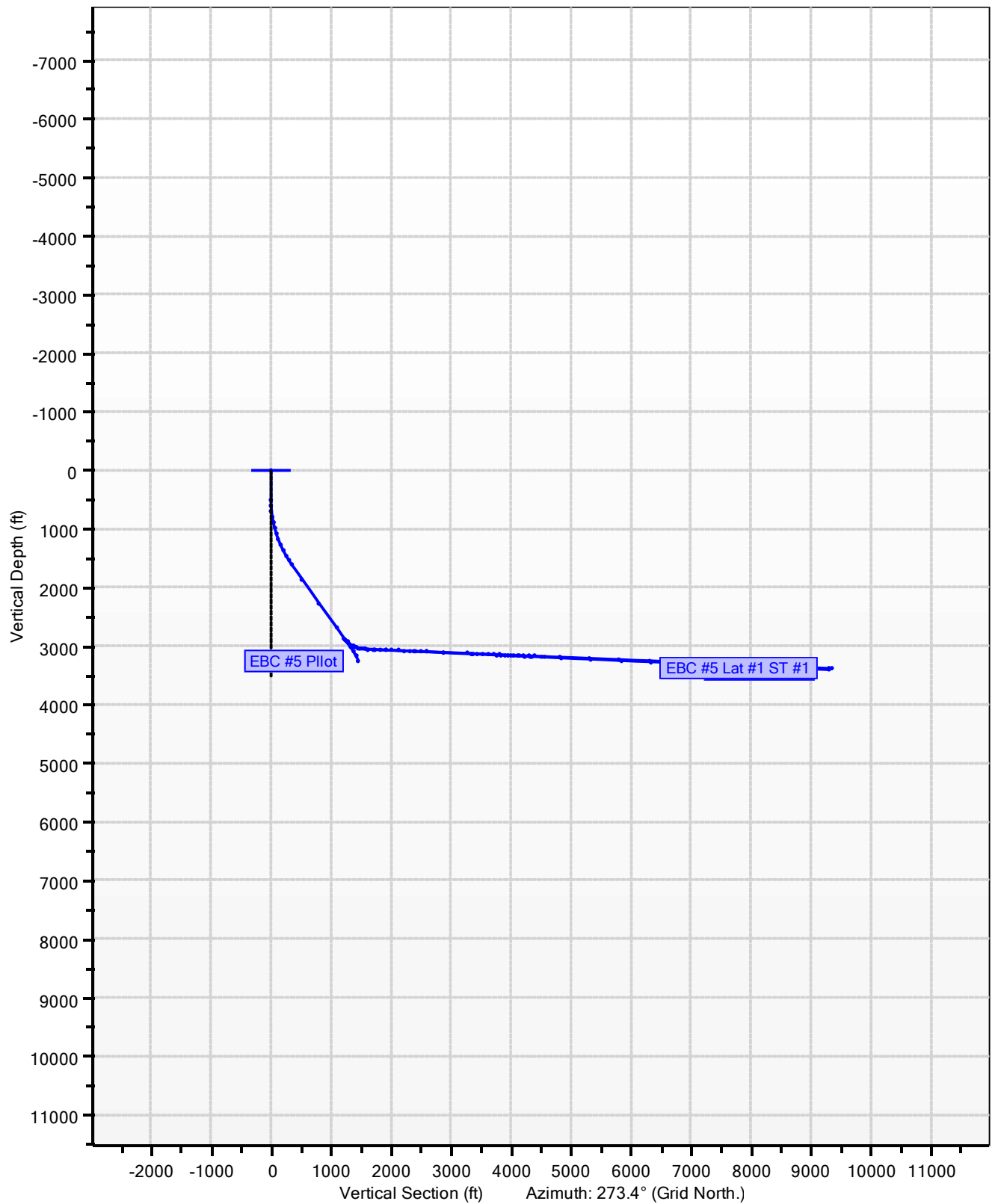


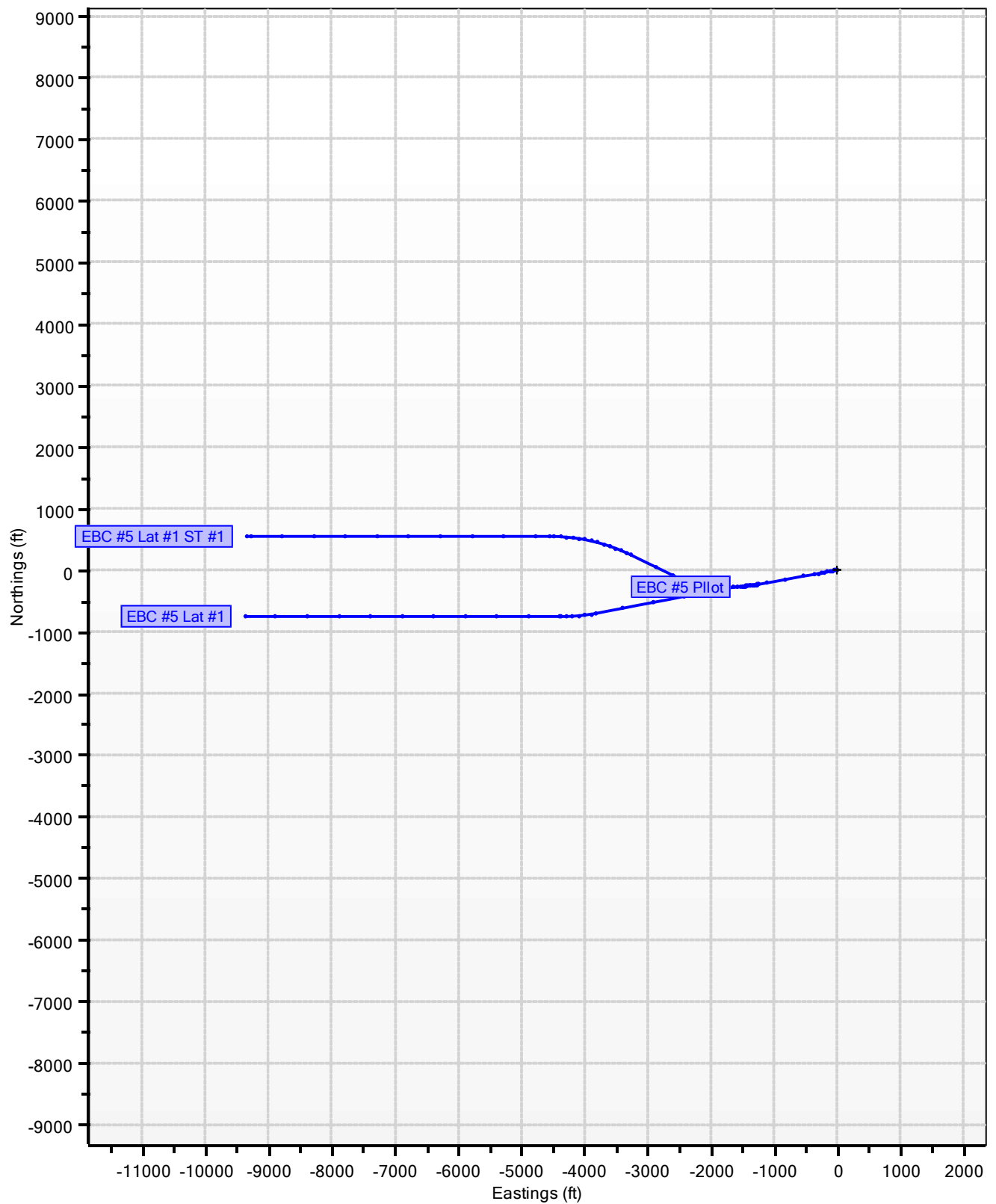
**East Bull Creek Well
EBC Pad 3
EBC #5
EBC #5 Lat #1**

Catamount Energy Partners Proposal Report

EBC Pad 3, EBC #5



EBC Pad 3, EBC #5



Catamount Energy Partners

Proposal Report



Database:	San Juan Basin	Local Coordinate Reference:	EBC #5
Company:		TVD Reference:	EBC #5
Project:	East Bull Creek Well	MD Reference:	EBC #5
Site:	EBC Pad 3	North reference:	Grid North
Well:	EBC #5	Survey Calculation Method:	Minimum Curvature
Wellbore:			
Proposal:	EBC #5 Lat #1		

Project	East Bull Creek Well		
Map System:	HPGN Colorado State Planes	System Datum:	Mean Sea Level
Geo Datum:	High Precision GPS Network (aka HARN, NAD83/9)		
Map Zone:	Southern Zone		

Site	EBC Pad 3			
Site Position:		Northing:	0	Latitude: 33.48902771° N
From:	Map	Easting:	0	Longitude: 115.33027986° W
Position Uncertainty:	6946ft	Slot Radius:	0in	Grid Convergence: -6.0°

Well	EBC #5			
Well Position:	+N/-S	1187929ft	Northing:	+1187929
	+E/-W	2445884ft	Easting:	+2445884
Position Uncertainty:		1ft	Wellhead Elevation:	6946ft
			Ground Level:	6930ft

Magnetics	Model Name	Sample Date	Declination (°)	Dip Angle (°)	Field Strength (nT)
	User Defined	2/9/2018	0.0	0.0	0.0

Proposal	EBC #5 Lat #1			
Audit Notes:				
Version:		Phase:		Tie On Depth: 3240ft

Vertical Section:	Depth from TVD (ft)	+N/-S (ft)	+E/-W (ft)	Direction (°)
	0	0	0	265.4

Plan Sections										
Measured Depth (ft)	Inclination (°)	Azimuth (°)	Vertical Depth (ft)	+N/-S (ft)	+E/-W (ft)	Dogleg Rate (°/100ft)	Build Rate (°/100ft)	Turn Rate (°/100ft)	TFO (°)	Target
3240	35.6	259.5	2875	-230	-1239					
3583	81.7	264.8	3049	-266	-1522	13.5	13.5	1.6	7.3	
3636	87.6	264.4	3054	-271	-1575	11.0	11.0	-0.7	-3.5	
3820	87.4	258.9	3062	-298	-1756	3.0	-0.1	-3.0	-91.7	
5920	87.4	258.9	3156	-701	-3815	0.0	0.0	0.0	0.0	
6473	87.4	270.0	3180	-754	-4365	2.0	0.0	2.0	90.4	
11473	87.4	270.0	3406	-754	-9360	0.0	0.0	0.0	0.0	EBC 5 Lat 1 BHL

Planned Survey											
Measured Depth (ft)	Incl. (°)	Az. (°)	Vertical Depth (ft)	Sub Sea Depth (ft)	+N/-S (ft)	+E/-W (ft)	Vertical Section (ft)	Closure Distance (ft)	Closure Azimuth (°)	Dogleg Rate (°/100ft)	Comments/ Formations
0	0.0	0.0	0	-6946	0	0	0	0	0.0	0.0	
100	0.0	0.0	100	-6846	0	0	0	0	0.0	0.0	
200	0.0	0.0	200	-6746	0	0	0	0	0.0	0.0	
300	0.0	0.0	300	-6646	0	0	0	0	0.0	0.0	
400	0.0	0.0	400	-6546	0	0	0	0	0.0	0.0	
500	0.0	0.0	500	-6446	0	0	0	0	0.0	0.0	
510	0.3	259.5	510	-6436	0	0	0	0	259.5	3.0	
540	1.2	259.5	540	-6406	0	0	0	0	259.5	3.0	
570	2.1	259.5	570	-6376	0	-1	1	1	259.5	3.0	
600	3.0	259.5	600	-6346	0	-3	3	3	259.5	3.0	

Catamount Energy Partners

Proposal Report



Database:	San Juan Basin	Local Coordinate Reference:	EBC #5
Company:		TVD Reference:	EBC #5
Project:	East Bull Creek Well	MD Reference:	EBC #5
Site:	EBC Pad 3	North reference:	Grid North
Well:	EBC #5	Survey Calculation Method:	Minimum Curvature
Wellbore:			
Proposal:	EBC #5 Lat #1		

Planned Survey											
Measured Depth (ft)	Incl. (°)	Az. (°)	Vertical Depth (ft)	Sub Sea Depth (ft)	+N/-S (ft)	+E/-W (ft)	Vertical Section (ft)	Closure Distance (ft)	Closure Azimuth (°)	Dogleg Rate (°/100ft)	Comments/ Formations
630	3.9	259.5	630	-6316	-1	-4	4	4	259.5	3.0	
660	4.8	259.5	660	-6286	-1	-7	7	7	259.5	3.0	
690	5.7	259.5	690	-6256	-2	-9	9	9	259.5	3.0	
720	6.6	259.5	720	-6226	-2	-12	13	13	259.5	3.0	
750	7.5	259.5	749	-6197	-3	-16	16	16	259.5	3.0	
780	8.4	259.5	779	-6167	-4	-20	20	20	259.5	3.0	
810	9.3	259.5	809	-6137	-5	-25	25	25	259.5	3.0	
840	10.2	259.5	838	-6108	-6	-30	30	30	259.5	3.0	
870	11.1	259.5	868	-6078	-7	-35	36	36	259.5	3.0	
900	12.0	259.5	897	-6049	-8	-41	42	42	259.5	3.0	
930	12.9	259.5	926	-6020	-9	-47	48	48	259.5	3.0	
960	13.8	259.5	956	-5990	-10	-54	55	55	259.5	3.0	
990	14.7	259.5	985	-5961	-11	-61	62	63	259.5	3.0	
1020	15.6	259.5	1014	-5932	-13	-69	70	70	259.5	3.0	
1050	16.5	259.5	1042	-5904	-14	-77	78	79	259.5	3.0	
1080	17.4	259.5	1071	-5875	-16	-86	87	87	259.5	3.0	
1110	18.3	259.5	1100	-5846	-18	-95	96	97	259.5	3.0	
1140	19.2	259.5	1128	-5818	-19	-104	106	106	259.5	3.0	
1170	20.1	259.5	1156	-5790	-21	-114	116	116	259.5	3.0	
1200	21.0	259.5	1184	-5762	-23	-125	126	127	259.5	3.0	
1230	21.9	259.5	1212	-5734	-25	-136	137	138	259.5	3.0	
1260	22.8	259.5	1240	-5706	-27	-147	148	149	259.5	3.0	
1290	23.7	259.5	1268	-5678	-29	-158	160	161	259.5	3.0	
1320	24.6	259.5	1295	-5651	-32	-170	172	173	259.5	3.0	
1350	25.5	259.5	1322	-5624	-34	-183	185	186	259.5	3.0	
1380	26.4	259.5	1349	-5597	-36	-196	198	199	259.5	3.0	
1410	27.3	259.5	1376	-5570	-39	-209	212	213	259.5	3.0	
1440	28.2	259.5	1403	-5543	-41	-223	225	227	259.5	3.0	
1470	29.1	259.5	1429	-5517	-44	-237	240	241	259.5	3.0	
1500	30.0	259.5	1455	-5491	-47	-252	255	256	259.5	3.0	
1530	30.9	259.5	1481	-5465	-50	-267	270	271	259.5	3.0	
1560	31.8	259.5	1506	-5440	-52	-282	285	287	259.5	3.0	
1590	32.7	259.5	1532	-5414	-55	-298	301	303	259.5	3.0	
1620	33.6	259.5	1557	-5389	-58	-314	317	319	259.5	3.0	
1650	34.5	259.5	1582	-5364	-61	-330	334	336	259.5	3.0	
1680	35.4	259.5	1606	-5340	-65	-347	351	353	259.5	3.0	
1686	35.6	259.5	1611	-5335	-65	-350	355	356	259.5	3.0	
1700	35.6	259.5	1623	-5323	-67	-359	363	365	259.5	0.0	
1800	35.6	259.5	1704	-5242	-77	-416	421	423	259.5	0.0	
1900	35.6	259.5	1785	-5161	-88	-473	478	481	259.5	0.0	
2000	35.6	259.5	1867	-5079	-99	-530	536	539	259.5	0.0	
2100	35.6	259.5	1948	-4998	-109	-587	594	597	259.5	0.0	
2200	35.6	259.5	2029	-4917	-120	-645	652	656	259.5	0.0	
2300	35.6	259.5	2111	-4835	-130	-702	710	714	259.5	0.0	
2400	35.6	259.5	2192	-4754	-141	-759	768	772	259.5	0.0	
2500	35.6	259.5	2273	-4673	-152	-816	826	830	259.5	0.0	
2600	35.6	259.5	2355	-4591	-162	-873	884	888	259.5	0.0	
2700	35.6	259.5	2436	-4510	-173	-930	941	946	259.5	0.0	
2800	35.6	259.5	2517	-4429	-184	-988	999	1005	259.5	0.0	
2900	35.6	259.5	2599	-4347	-194	-1045	1057	1063	259.5	0.0	

Catamount Energy Partners

Proposal Report



Database:	San Juan Basin	Local Coordinate Reference:	EBC #5
Company:		TVD Reference:	EBC #5
Project:	East Bull Creek Well	MD Reference:	EBC #5
Site:	EBC Pad 3	North reference:	Grid North
Well:	EBC #5	Survey Calculation Method:	Minimum Curvature
Wellbore:			
Proposal:	EBC #5 Lat #1		

Planned Survey											
Measured Depth (ft)	Incl. (°)	Az. (°)	Vertical Depth (ft)	Sub Sea Depth (ft)	+N/-S (ft)	+E/-W (ft)	Vertical Section (ft)	Closure Distance (ft)	Closure Azimuth (°)	Dogleg Rate (°/100ft)	Comments/ Formations
3000	35.6	259.5	2680	-4266	-205	-1102	1115	1121	259.5	0.0	
3100	35.6	259.5	2761	-4185	-216	-1159	1173	1179	259.5	0.0	
3200	35.6	259.5	2843	-4103	-226	-1216	1231	1237	259.5	0.0	
3240	35.6	259.5	2875	-4071	-230	-1239	1254	1261	259.5	0.0	
3270	39.6	260.3	2899	-4047	-234	-1257	1272	1279	259.5	13.5	
3300	43.6	261.0	2921	-4025	-237	-1277	1292	1299	259.5	13.5	
3330	47.7	261.5	2942	-4004	-240	-1298	1313	1320	259.5	13.5	
3360	51.7	262.1	2962	-3984	-243	-1321	1336	1343	259.6	13.5	
3390	55.7	262.5	2980	-3966	-247	-1345	1360	1367	259.6	13.5	
3420	59.8	262.9	2996	-3950	-250	-1370	1386	1393	259.7	13.5	
3450	63.8	263.3	3010	-3936	-253	-1396	1412	1419	259.7	13.5	
3480	67.8	263.7	3022	-3924	-256	-1423	1439	1446	259.8	13.5	
3510	71.9	264.0	3032	-3914	-259	-1451	1467	1474	259.9	13.5	
3540	75.9	264.3	3041	-3905	-262	-1480	1496	1503	260.0	13.5	
3570	80.0	264.7	3047	-3899	-265	-1509	1526	1532	260.0	13.5	
3583	81.7	264.8	3049	-3897	-266	-1522	1538	1545	260.1	13.5	Target Coal
3600	83.6	264.7	3051	-3895	-268	-1539	1555	1562	260.1	11.0	
3630	86.9	264.5	3054	-3892	-270	-1569	1585	1592	260.2	11.0	
3636	87.6	264.4	3054	-3892	-271	-1575	1592	1598	260.2	11.0	
3660	87.6	263.7	3055	-3891	-273	-1598	1615	1622	260.3	3.0	
3690	87.6	262.8	3056	-3890	-277	-1628	1645	1652	260.3	3.0	
3720	87.5	261.9	3058	-3888	-281	-1658	1675	1681	260.4	3.0	
3750	87.5	261.0	3059	-3887	-285	-1687	1705	1711	260.4	3.0	
3780	87.5	260.1	3060	-3886	-290	-1717	1735	1741	260.4	3.0	
3810	87.5	259.2	3061	-3885	-296	-1747	1765	1771	260.4	3.0	
3820	87.4	258.9	3062	-3884	-298	-1756	1775	1781	260.4	3.0	
3900	87.4	258.9	3065	-3881	-313	-1835	1854	1861	260.3	0.0	
4000	87.4	258.9	3070	-3876	-332	-1933	1953	1961	260.3	0.0	
4100	87.4	258.9	3074	-3872	-351	-2031	2053	2061	260.2	0.0	
4200	87.4	258.9	3079	-3867	-370	-2129	2152	2161	260.1	0.0	
4300	87.4	258.9	3083	-3863	-390	-2227	2251	2261	260.1	0.0	
4400	87.4	258.9	3088	-3858	-409	-2325	2350	2361	260.0	0.0	
4500	87.4	258.9	3092	-3854	-428	-2423	2450	2461	260.0	0.0	
4600	87.4	258.9	3097	-3849	-447	-2521	2549	2560	259.9	0.0	
4700	87.4	258.9	3101	-3845	-466	-2619	2648	2660	259.9	0.0	
4800	87.4	258.9	3106	-3840	-486	-2717	2747	2760	259.9	0.0	
4900	87.4	258.9	3110	-3836	-505	-2815	2847	2860	259.8	0.0	
5000	87.4	258.9	3115	-3831	-524	-2913	2946	2960	259.8	0.0	
5100	87.4	258.9	3119	-3827	-543	-3011	3045	3060	259.8	0.0	
5200	87.4	258.9	3123	-3823	-562	-3109	3144	3160	259.7	0.0	
5300	87.4	258.9	3128	-3818	-582	-3207	3244	3260	259.7	0.0	
5400	87.4	258.9	3132	-3814	-601	-3305	3343	3360	259.7	0.0	
5500	87.4	258.9	3137	-3809	-620	-3403	3442	3459	259.7	0.0	
5600	87.4	258.9	3141	-3805	-639	-3501	3541	3559	259.7	0.0	
5700	87.4	258.9	3146	-3800	-658	-3600	3641	3659	259.6	0.0	
5800	87.4	258.9	3150	-3796	-678	-3698	3740	3759	259.6	0.0	
5900	87.4	258.9	3155	-3791	-697	-3796	3839	3859	259.6	0.0	
5920	87.4	258.9	3156	-3790	-701	-3815	3859	3879	259.6	0.0	
5940	87.4	259.3	3156	-3790	-704	-3835	3879	3899	259.6	2.0	
5970	87.4	259.9	3158	-3788	-710	-3864	3909	3929	259.6	2.0	

Catamount Energy Partners

Proposal Report



Database:	San Juan Basin	Local Coordinate Reference:	EBC #5
Company:		TVD Reference:	EBC #5
Project:	East Bull Creek Well	MD Reference:	EBC #5
Site:	EBC Pad 3	North reference:	Grid North
Well:	EBC #5	Survey Calculation Method:	Minimum Curvature
Wellbore:			
Proposal:	EBC #5 Lat #1		

Planned Survey											
Measured Depth (ft)	Incl. (°)	Az. (°)	Vertical Depth (ft)	Sub Sea Depth (ft)	+N/-S (ft)	+E/-W (ft)	Vertical Section (ft)	Closure Distance (ft)	Closure Azimuth (°)	Dogleg Rate (°/100ft)	Comments/ Formations
6000	87.4	260.5	3159	-3787	-715	-3894	3939	3959	259.6	2.0	
6030	87.4	261.1	3161	-3785	-720	-3923	3969	3989	259.6	2.0	
6060	87.4	261.7	3162	-3784	-724	-3953	3998	4019	259.6	2.0	
6090	87.4	262.3	3163	-3783	-728	-3983	4028	4049	259.6	2.0	
6120	87.4	262.9	3165	-3781	-732	-4012	4058	4079	259.7	2.0	
6150	87.4	263.5	3166	-3780	-736	-4042	4088	4109	259.7	2.0	
6180	87.4	264.1	3167	-3779	-739	-4072	4118	4138	259.7	2.0	
6210	87.4	264.7	3169	-3777	-742	-4102	4148	4168	259.8	2.0	
6240	87.4	265.3	3170	-3776	-744	-4132	4178	4198	259.8	2.0	
6270	87.4	265.9	3171	-3775	-747	-4162	4208	4228	259.8	2.0	
6300	87.4	266.5	3173	-3773	-749	-4191	4238	4258	259.9	2.0	
6330	87.4	267.1	3174	-3772	-750	-4221	4268	4288	259.9	2.0	
6360	87.4	267.7	3175	-3771	-752	-4251	4298	4317	260.0	2.0	
6390	87.4	268.3	3177	-3769	-753	-4281	4328	4347	260.0	2.0	
6420	87.4	268.9	3178	-3768	-753	-4311	4358	4377	260.1	2.0	
6450	87.4	269.5	3179	-3767	-754	-4341	4388	4406	260.2	2.0	
6473	87.4	270.0	3180	-3766	-754	-4365	4411	4429	260.2	2.0	
6500	87.4	270.0	3182	-3764	-754	-4391	4438	4455	260.3	0.0	
6600	87.4	270.0	3186	-3760	-754	-4491	4537	4554	260.5	0.0	
6700	87.4	270.0	3191	-3755	-754	-4591	4637	4652	260.7	0.0	
6800	87.4	270.0	3195	-3751	-754	-4691	4736	4751	260.9	0.0	
6900	87.4	270.0	3200	-3746	-754	-4791	4836	4850	261.1	0.0	
7000	87.4	270.0	3204	-3742	-754	-4891	4935	4948	261.2	0.0	
7100	87.4	270.0	3209	-3737	-754	-4991	5035	5047	261.4	0.0	
7200	87.4	270.0	3213	-3733	-754	-5090	5135	5146	261.6	0.0	
7300	87.4	270.0	3218	-3728	-754	-5190	5234	5245	261.7	0.0	
7400	87.4	270.0	3222	-3724	-754	-5290	5334	5344	261.9	0.0	
7500	87.4	270.0	3227	-3719	-754	-5390	5433	5443	262.0	0.0	
7600	87.4	270.0	3231	-3715	-754	-5490	5533	5542	262.2	0.0	
7700	87.4	270.0	3236	-3710	-754	-5590	5632	5641	262.3	0.0	
7800	87.4	270.0	3240	-3706	-754	-5690	5732	5740	262.5	0.0	
7900	87.4	270.0	3245	-3701	-754	-5790	5832	5839	262.6	0.0	
8000	87.4	270.0	3249	-3697	-754	-5890	5931	5938	262.7	0.0	
8100	87.4	270.0	3254	-3692	-754	-5990	6031	6037	262.8	0.0	
8200	87.4	270.0	3258	-3688	-754	-6089	6130	6136	262.9	0.0	
8300	87.4	270.0	3263	-3683	-754	-6189	6230	6235	263.1	0.0	
8400	87.4	270.0	3267	-3679	-754	-6289	6329	6334	263.2	0.0	
8500	87.4	270.0	3272	-3674	-754	-6389	6429	6433	263.3	0.0	
8600	87.4	270.0	3276	-3670	-754	-6489	6529	6533	263.4	0.0	
8700	87.4	270.0	3281	-3665	-754	-6589	6628	6632	263.5	0.0	
8800	87.4	270.0	3285	-3661	-754	-6689	6728	6731	263.6	0.0	
8900	87.4	270.0	3290	-3656	-754	-6789	6827	6830	263.7	0.0	
9000	87.4	270.0	3294	-3652	-754	-6889	6927	6930	263.8	0.0	
9100	87.4	270.0	3299	-3647	-754	-6989	7026	7029	263.8	0.0	
9200	87.4	270.0	3303	-3643	-754	-7088	7126	7128	263.9	0.0	
9300	87.4	270.0	3308	-3638	-754	-7188	7226	7228	264.0	0.0	
9400	87.4	270.0	3312	-3634	-754	-7288	7325	7327	264.1	0.0	
9500	87.4	270.0	3317	-3629	-754	-7388	7425	7426	264.2	0.0	
9600	87.4	270.0	3322	-3624	-754	-7488	7524	7526	264.3	0.0	
9700	87.4	270.0	3326	-3620	-754	-7588	7624	7625	264.3	0.0	

Catamount Energy Partners

Proposal Report



Database:	San Juan Basin	Local Coordinate Reference:	EBC #5
Company:		TVD Reference:	EBC #5
Project:	East Bull Creek Well	MD Reference:	EBC #5
Site:	EBC Pad 3	North reference:	Grid North
Well:	EBC #5	Survey Calculation Method:	Minimum Curvature
Wellbore:			
Proposal:	EBC #5 Lat #1		

Planned Survey											
Measured Depth (ft)	Incl. (°)	Az. (°)	Vertical Depth (ft)	Sub Sea Depth (ft)	+N/-S (ft)	+E/-W (ft)	Vertical Section (ft)	Closure Distance (ft)	Closure Azimuth (°)	Dogleg Rate (°/100ft)	Comments/ Formations
9800	87.4	270.0	3331	-3615	-754	-7688	7724	7725	264.4	0.0	
9900	87.4	270.0	3335	-3611	-754	-7788	7823	7824	264.5	0.0	
10000	87.4	270.0	3340	-3606	-754	-7888	7923	7924	264.5	0.0	
10100	87.4	270.0	3344	-3602	-754	-7988	8022	8023	264.6	0.0	
10200	87.4	270.0	3349	-3597	-754	-8087	8122	8122	264.7	0.0	
10300	87.4	270.0	3353	-3593	-754	-8187	8221	8222	264.7	0.0	
10400	87.4	270.0	3358	-3588	-754	-8287	8321	8321	264.8	0.0	
10500	87.4	270.0	3362	-3584	-754	-8387	8421	8421	264.9	0.0	
10600	87.4	270.0	3367	-3579	-754	-8487	8520	8520	264.9	0.0	
10700	87.4	270.0	3371	-3575	-754	-8587	8620	8620	265.0	0.0	
10800	87.4	270.0	3376	-3570	-754	-8687	8719	8719	265.0	0.0	
10900	87.4	270.0	3380	-3566	-754	-8787	8819	8819	265.1	0.0	
11000	87.4	270.0	3385	-3561	-754	-8887	8918	8919	265.2	0.0	
11100	87.4	270.0	3389	-3557	-754	-8986	9018	9018	265.2	0.0	
11200	87.4	270.0	3394	-3552	-754	-9086	9118	9118	265.3	0.0	
11300	87.4	270.0	3398	-3548	-754	-9186	9217	9217	265.3	0.0	
11400	87.4	270.0	3403	-3543	-754	-9286	9317	9317	265.4	0.0	
11473	87.4	270.0	3406	-3540	-754	-9360	9390	9390	265.4	0.0	EBC 5 Lat 1 BHL

Targets										
Target Name	-hit/miss target	-Shape	Dip Angle (°)	Dip Dir. (°)	TVD (ft)	+N/-S (ft)	+E/-W (ft)	Northing (ft)	Easting (ft)	Latitude Longitude
EBC 5 Lat 1 BHL	- proposal hits the target center	- Point			3406	-754	-9360	+1187175	+2436524	37.16469370° N 107.43378740° W

Formations						Dip Angle (°)	Dip Direction (°)
Measured Depth (ft)	Vertical Depth (ft)	Subsea Depth (ft)	Name				
3583	3049	-3897	Target Coal			0.0	0.0

Checked By:	Approved By:	Date:
-------------	--------------	-------

Disclaimer Notice

Catamount Energy Partners makes no warranty of any kind with respect to the subject matter included herein or the completeness or accuracy of this document.

Catamount Energy Partners are not responsible for any actions (or lack thereof) taken as a result of relying on or in any way using information contained in this document and in no event shall be liable for any damages resulting from reliance on or use of this information.